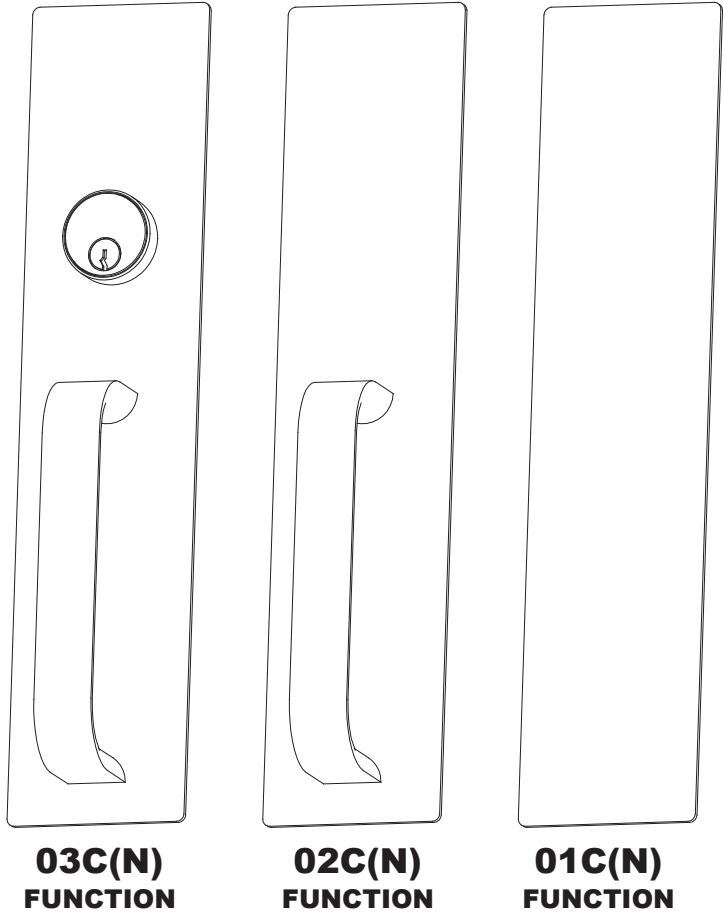
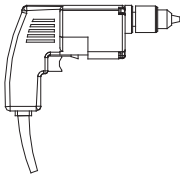

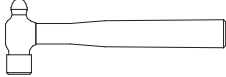
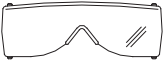

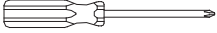



Detex Corporation, 302 Detex Drive, New Braunfels, Texas 78130-3045
(830)629-2900 / 1-800-729-3839 / Fax (830)620-6711
E-MAIL: detex@detex.com INTERNET: www.detex.com

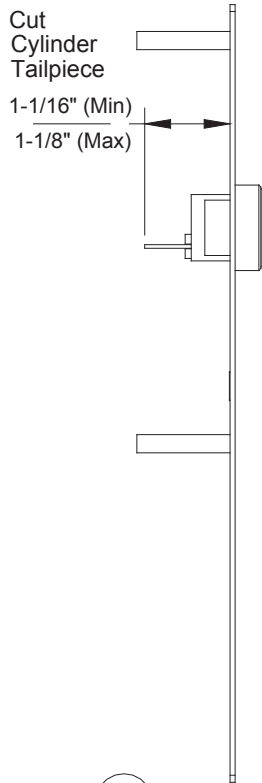
INSTALLATION INSTRUCTIONS FOR 03C(N), 02C(N), 01C(N) PULLPLATE TRIM



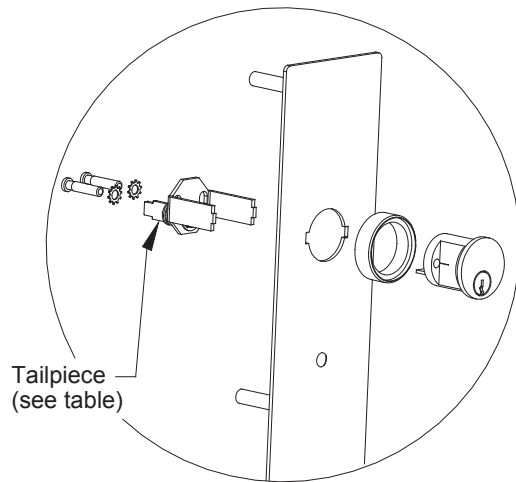
03, 02, 01 PULLPLATE Trim

Tools Required	
Power Drill	
Pencil	
Hammer	
Safety Glasses	
Tape Measure	
Screw Driver	
Center Punch	

03 Trim Preparation (No prep necessary for 02 & 01 Trims)

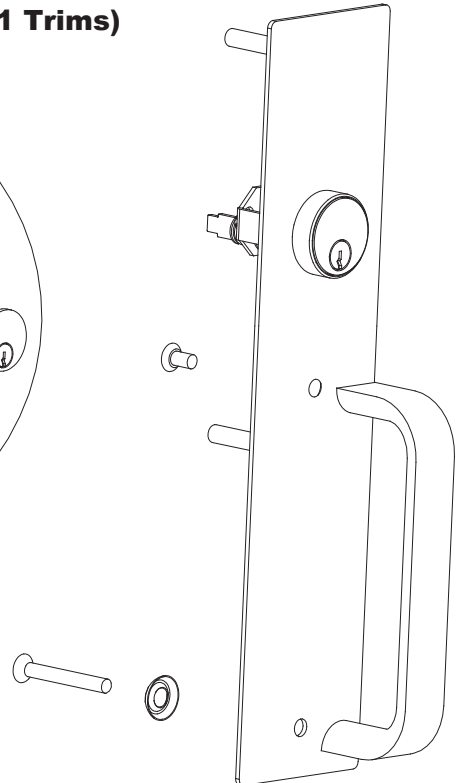


1
Rim Cylinder Preparation



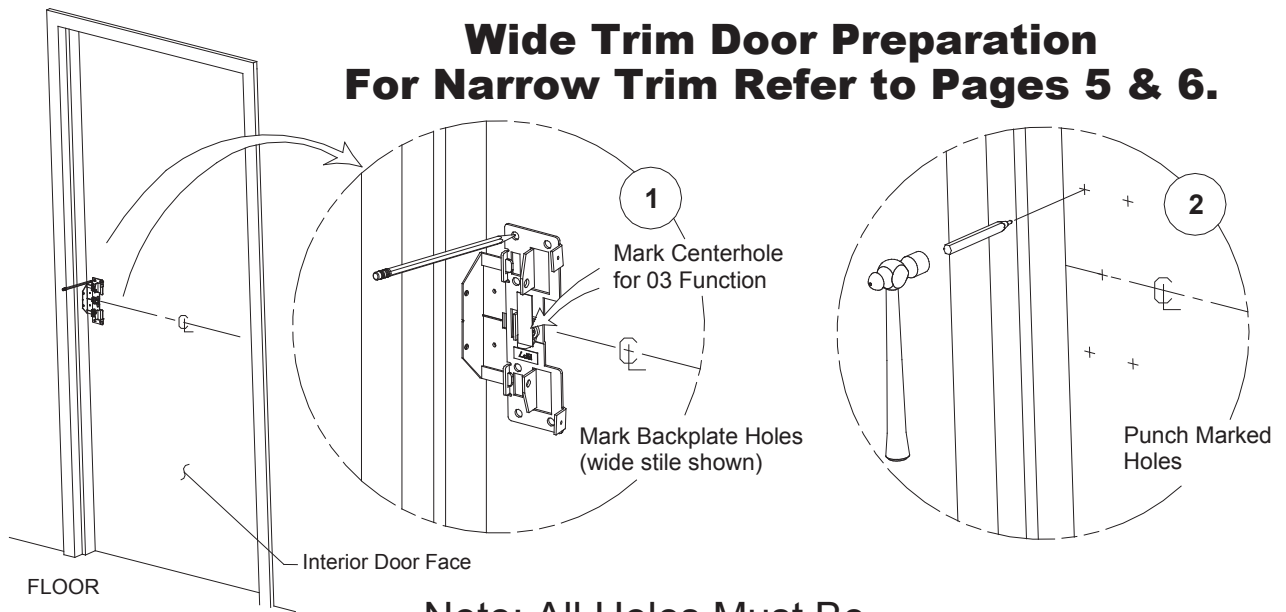
Tailpiece Used	Door Thickness
	1-3/4" and 2" Thick Doors
	2-1/4" Thick Doors

2
Install Tailpiece Assembly

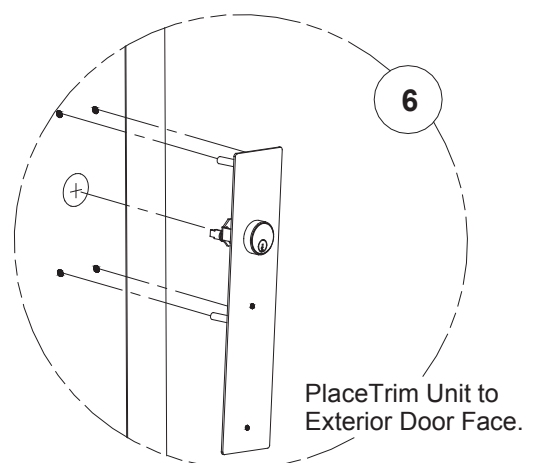
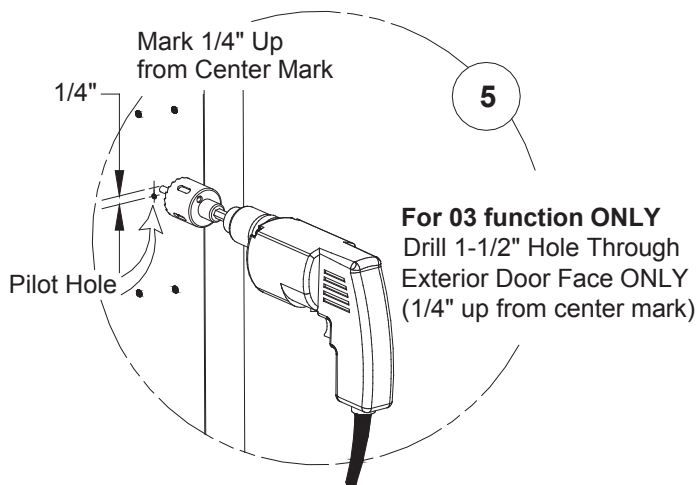
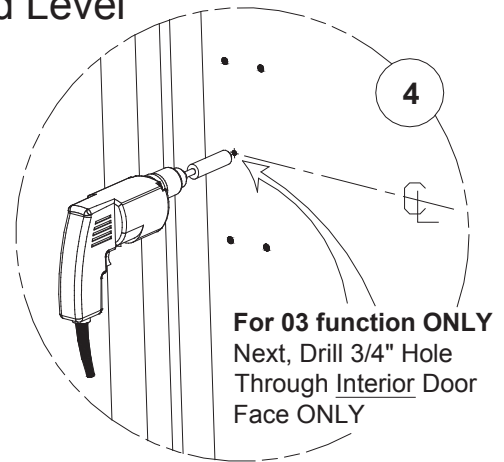
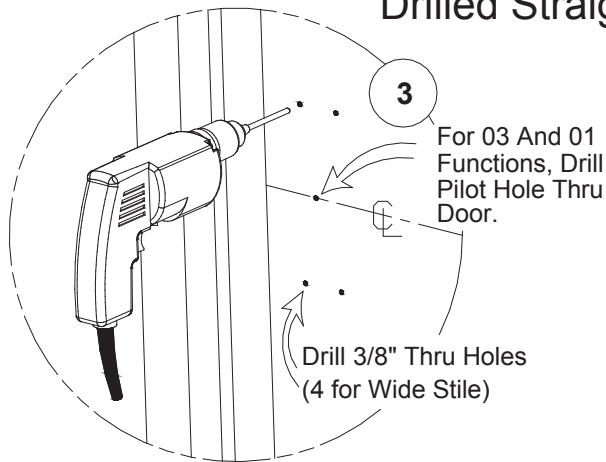


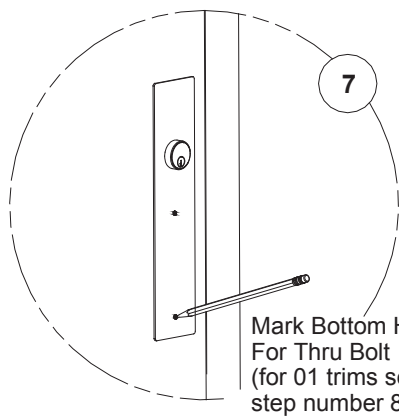
3
Install Trim Unit on Door
(see next page)

Wide Trim Door Preparation For Narrow Trim Refer to Pages 5 & 6.

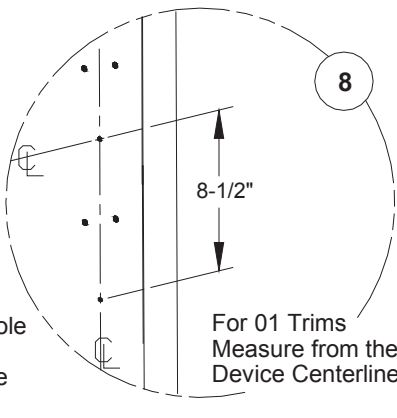


Note: All Holes Must Be Drilled Straight and Level

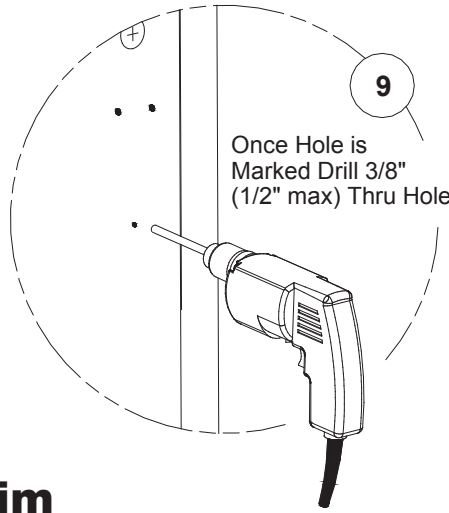




Mark Bottom Hole For Thru Bolt (for O1 trims see step number 8)

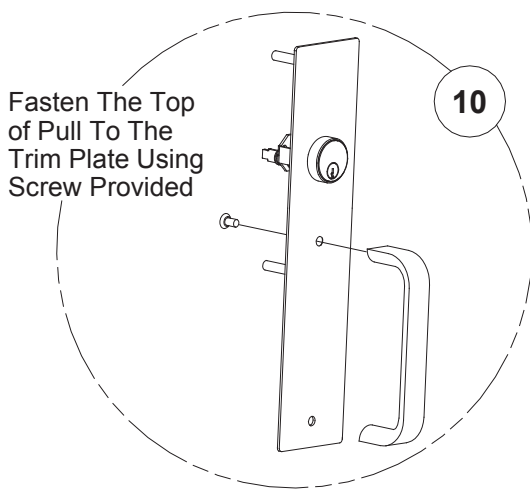


For O1 Trims Measure from the Device Centerlines

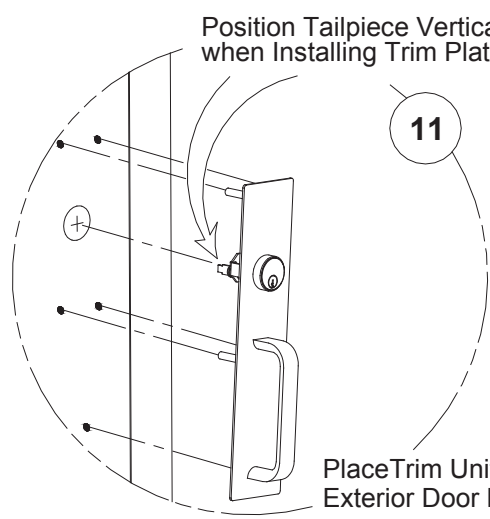


Once Hole is Marked Drill 3/8" (1/2" max) Thru Hole.

Installing the Trim

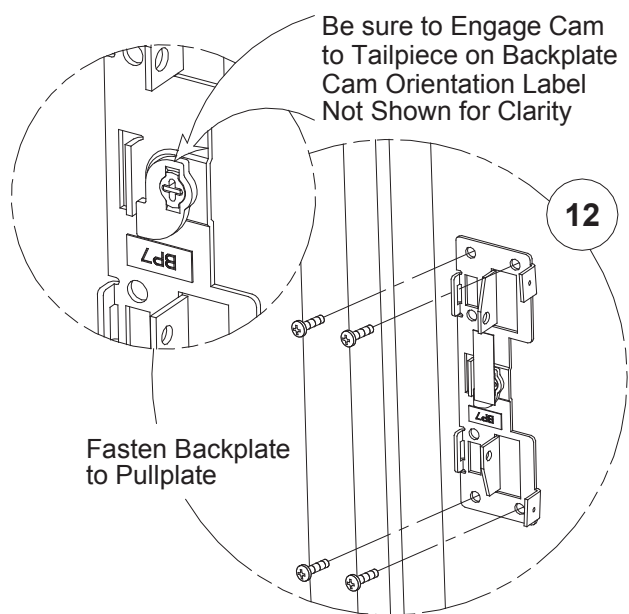


Fasten The Top of Pull To The Trim Plate Using Screw Provided



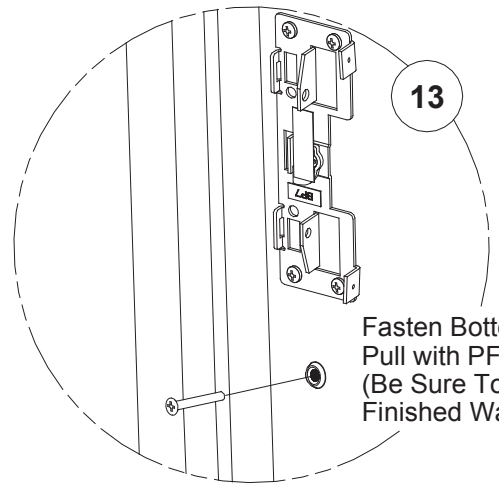
Position Tailpiece Vertically when Installing Trim Plate

Place Trim Unit onto Exterior Door Face.



Be sure to Engage Cam to Tailpiece on Backplate Cam Orientation Label Not Shown for Clarity

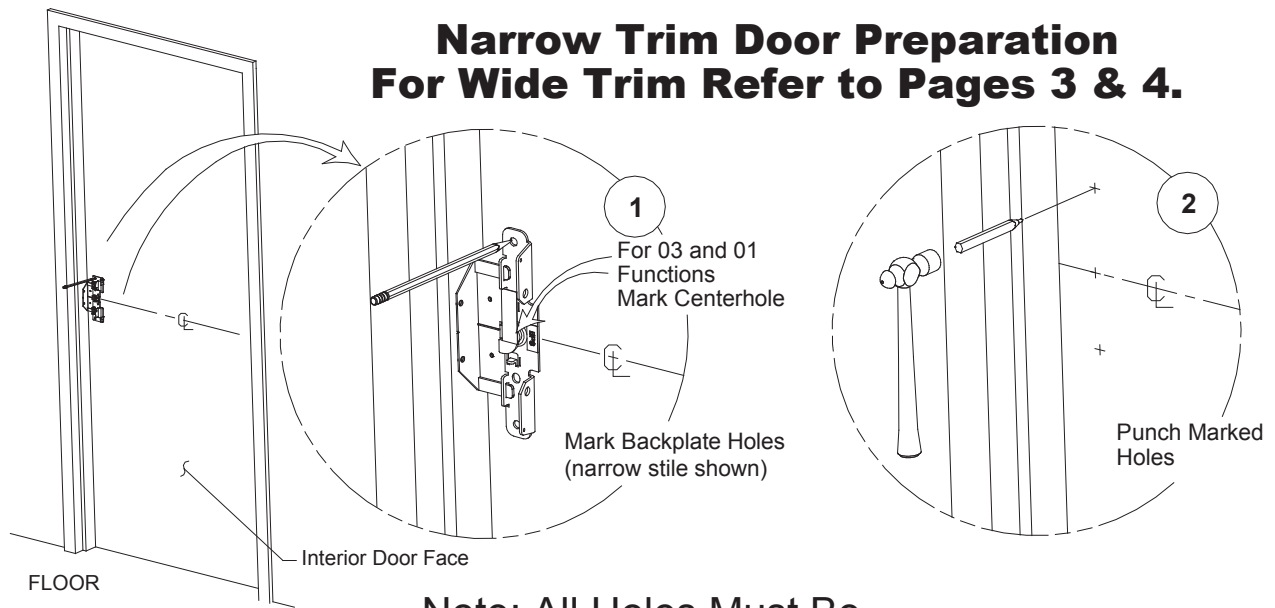
Fasten Backplate to Pullplate



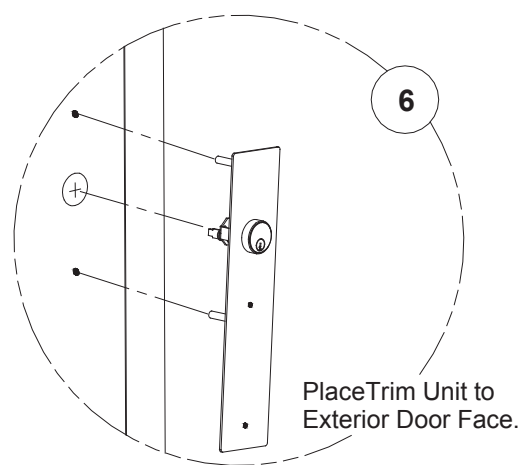
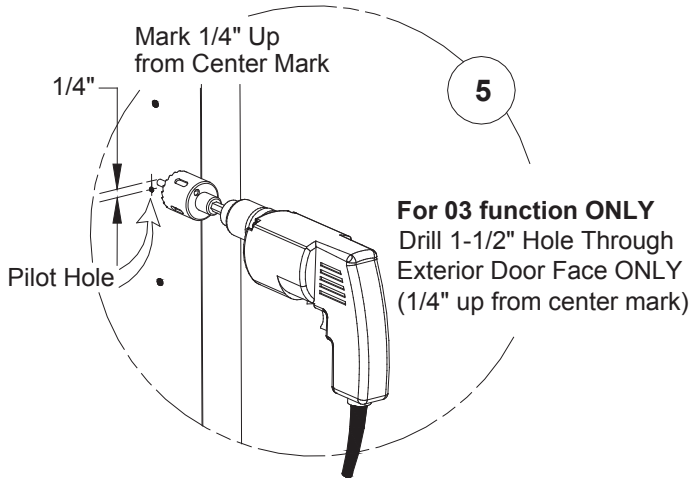
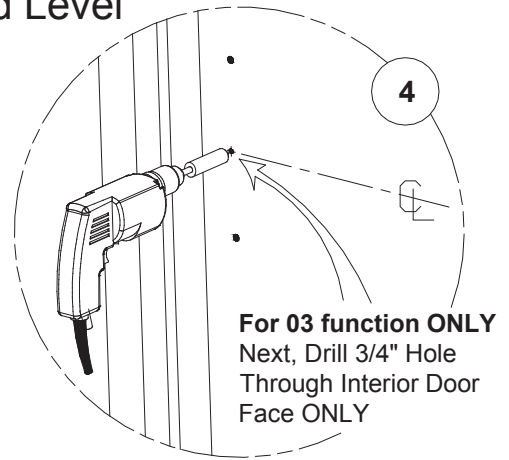
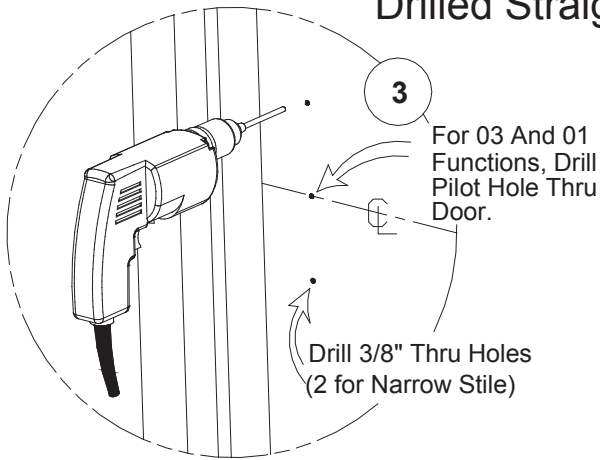
Fasten Bottom of Pull with PFH Screw (Be Sure To Use Finished Washer)

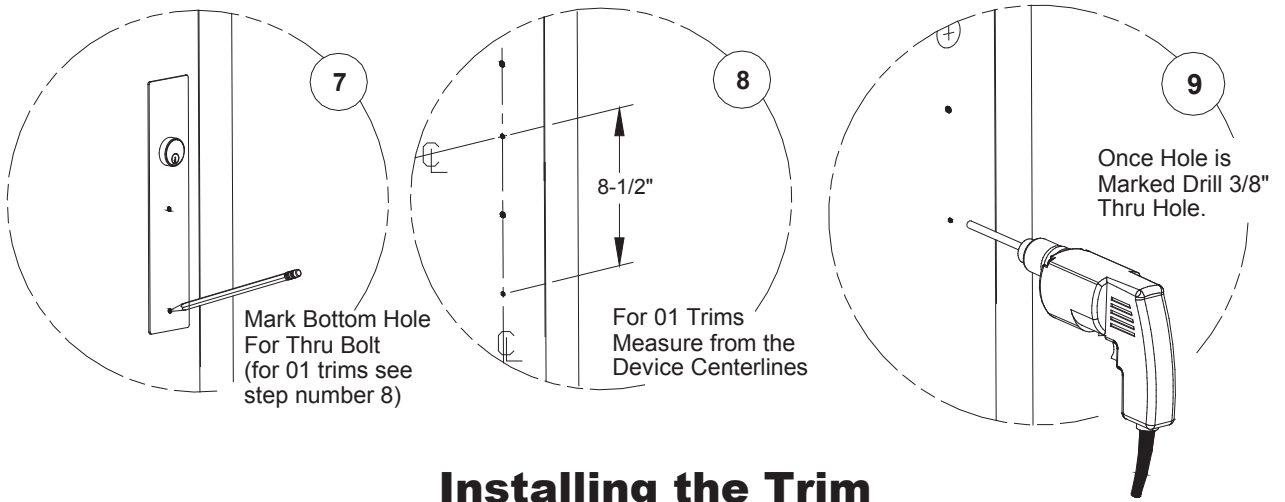
Continue with Exit Hardware Instructions

Narrow Trim Door Preparation For Wide Trim Refer to Pages 3 & 4.



Note: All Holes Must Be Drilled Straight and Level





Installing the Trim

