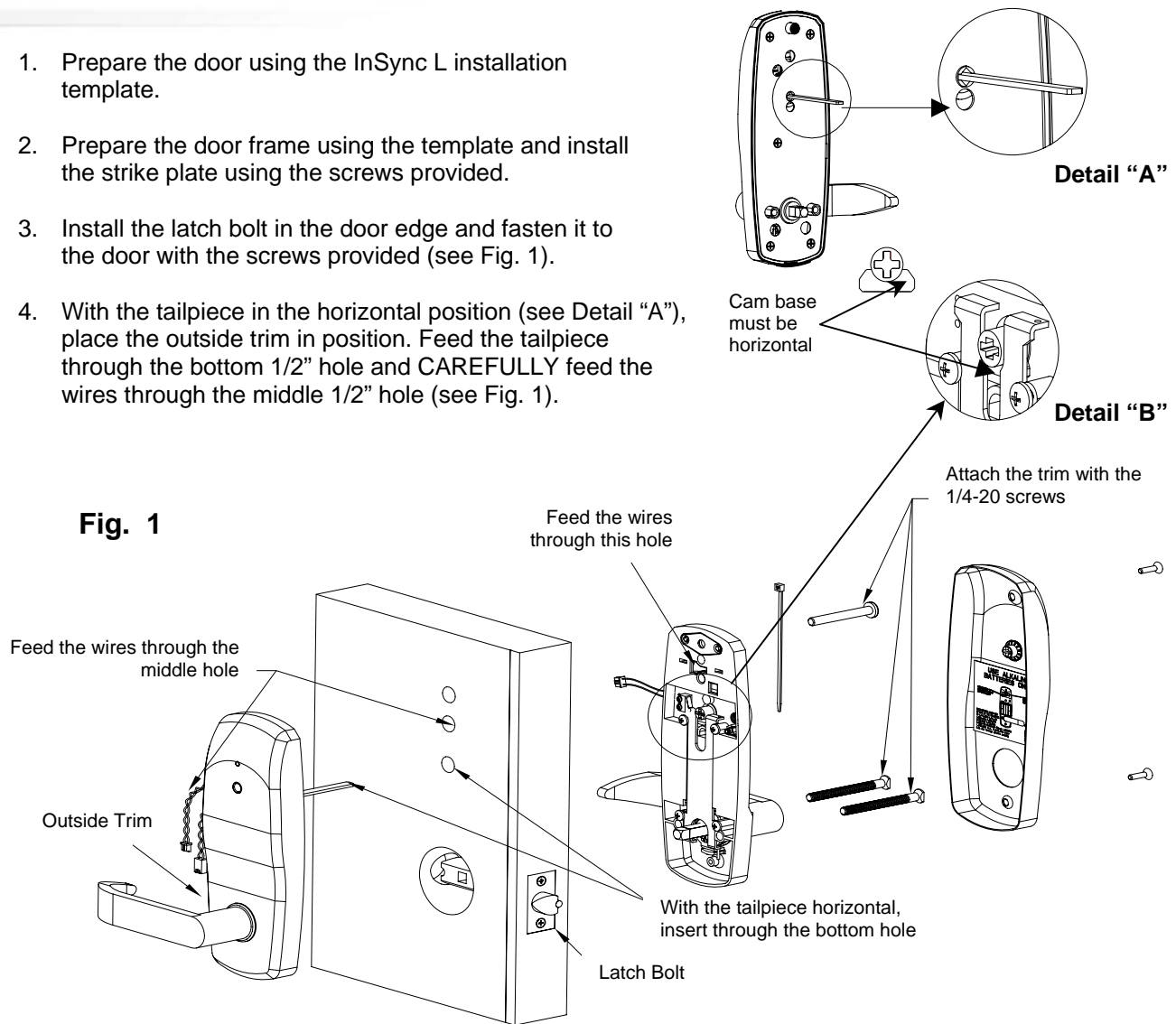


# InSync® L Installation Instructions

All parts needed to install the InSync® L lock are included with each unit. Check to make sure all parts are accounted for before beginning installation. Do not substitute any of the parts. The use of substitute parts will result in poor performance of the lock.

1. Prepare the door using the InSync L installation template.
2. Prepare the door frame using the template and install the strike plate using the screws provided.
3. Install the latch bolt in the door edge and fasten it to the door with the screws provided (see Fig. 1).
4. With the tailpiece in the horizontal position (see Detail "A"), place the outside trim in position. Feed the tailpiece through the bottom 1/2" hole and CAREFULLY feed the wires through the middle 1/2" hole (see Fig. 1).

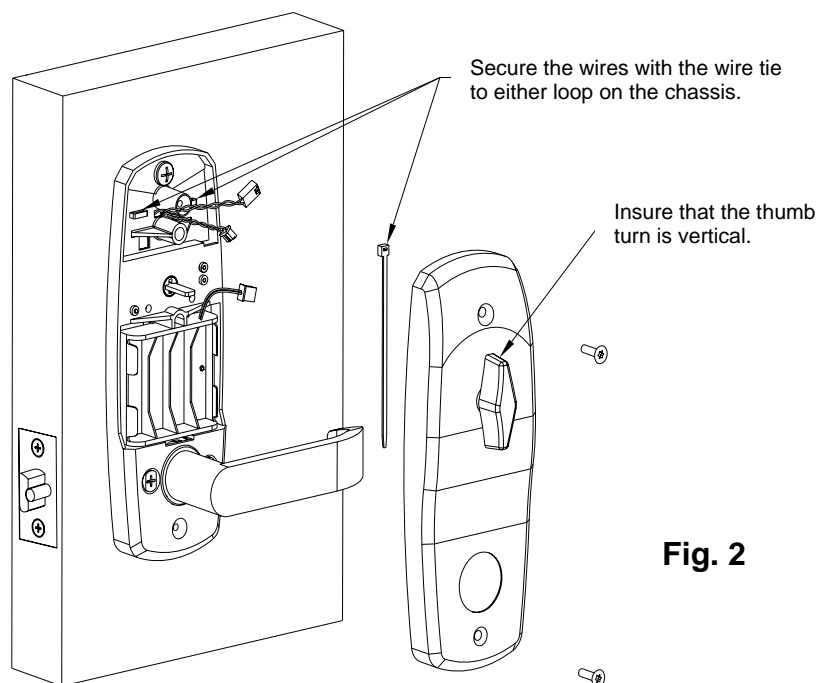


All information contained herein, including but not limited to product pricing and other intellectual property, is confidential and intended for the sole use of the addressee(s) so named. Any misuse of this confidential information contained herein may result in legal action by Computerized Security Systems dba SAFLOK and its parent company.

5. Before installing the inner trim, rotate the lever to insure that the tailpiece cam (see Fig.1, Detail "B") is in the correct orientation. While placing the inner trim in position, feed the cables through the appropriate hole in the inner chassis and attach the trim with two 1/4-20 x 2-5/8 flat head Phillips machine screws and one 1/4-20 x 2 pan head Phillips machine screws.
6. Plug the wire harnesses into the appropriate inner trim wires (battery and optional lever switch). Secure the wires with the wire tie to either loop on the chassis.
7. Install the four AA alkaline batteries.

**Important:** As the last battery is installed, watch for the LED on the outside of the lock to flash (reset).

8. With the thumb turn in the vertical position place the inner cover on the inner assembly. Secure the cover with the matching tamper-proof screws (supplied). A TR20 Torx bit and construction keys are included in the Start Up Kit.
9. **Important:** Before closing the door, check lock function using the construction key, thumb turn, and inner lever and outer levers.



**Fig. 2**

**Questions?** Call Customer Service at 800.999.6213 and select option 3.  
For online assistance, visit [support.saflok.com](http://support.saflok.com).



A Member of the Kaba Group

For worldwide office locations and contact information, visit us at [www.saflok.com](http://www.saflok.com).

**USA·Canada**

Phone: **877.272.3565**

**Europe · Middle East · Africa**

Phone: **33.1.30.13.04.04**

**Asia**

Phone: **86.10.5861.3561**

Manufactured under one or more of the following patents:

U.S.: 4,177,657; 4,411,144; 4,534,194; 4,890,870; 5,198,643;  
5,477,041; 5,820,177; 5,986,564; 7,051,561; D494,841; D501,131  
D512,899; D519,021; D531,629; D533,009; D533,047; D533,762;  
D533,763; D535,629 CANADA: 1,252,854; 1,298,902  
U.K. 2,010,375  
Other U.S. and foreign patents pending

SAFLOK reserves the right to modify the characteristics and features of all products in this publication.  
©2008 SAFLOK, all rights reserved.