



SPECIALTY
LOCKS



3510LM

ELECTROMECHANICAL CABINET LOCK WITH LATCH MONITOR



Energy
Field-Selectable
12VAC/VDC
24VAC/VDC



Strength
250lbf Holding Force



Warranty
3 Year
Limited Warranty



Mode
Dual Mode
Field-Selectable
Fail-Safe & Fail-Secure

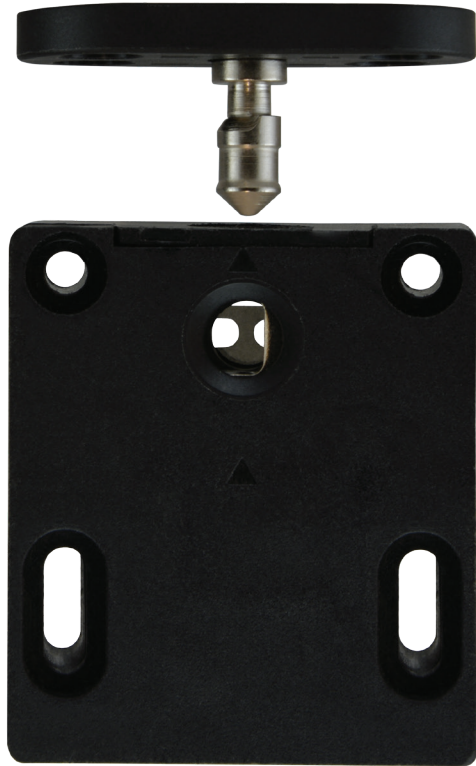


Latch Monitor
Built-in Monitoring Switch

Compact, surface-mounted design ideal for small enclosures.

3510LM

ELECTROMECHANICAL CABINET LOCK WITH LATCH MONITORING



Dimensions

1-5/8"W x 1-7/8"H x 13/16"D
(42mm x 48mm x 20mm)

Features

- Surface-mounted compact electric lock
- Versatile mounting positions
- Elongated holes for adjustable mounting
- Zinc-plated (rust-resistant) steel locking pin assembly
- Low energy consumption
- Positioning of the locking pin determines lock mode
- Built-in monitoring switch indicates whether the mechanism is locked or unlocked

Applications

- Retail
- Government
- Health Care
- Institutional
- Commercial
- Residential
- Filing Cabinets
- Cash Drawers
- Drug Cabinets
- Showcases
- Jewelry Cases
- Desk Drawers
- Key Cabinets
- Vending Machines
- Machine Access Covers

Model	Mode	Volts	Amps
3510LM	Dual Mode	12VAC/VDC	0.25
	Field-Selectable Fail-Safe & Fail-Secure	24VAC/VDC	0.12