



921067-00

Trim

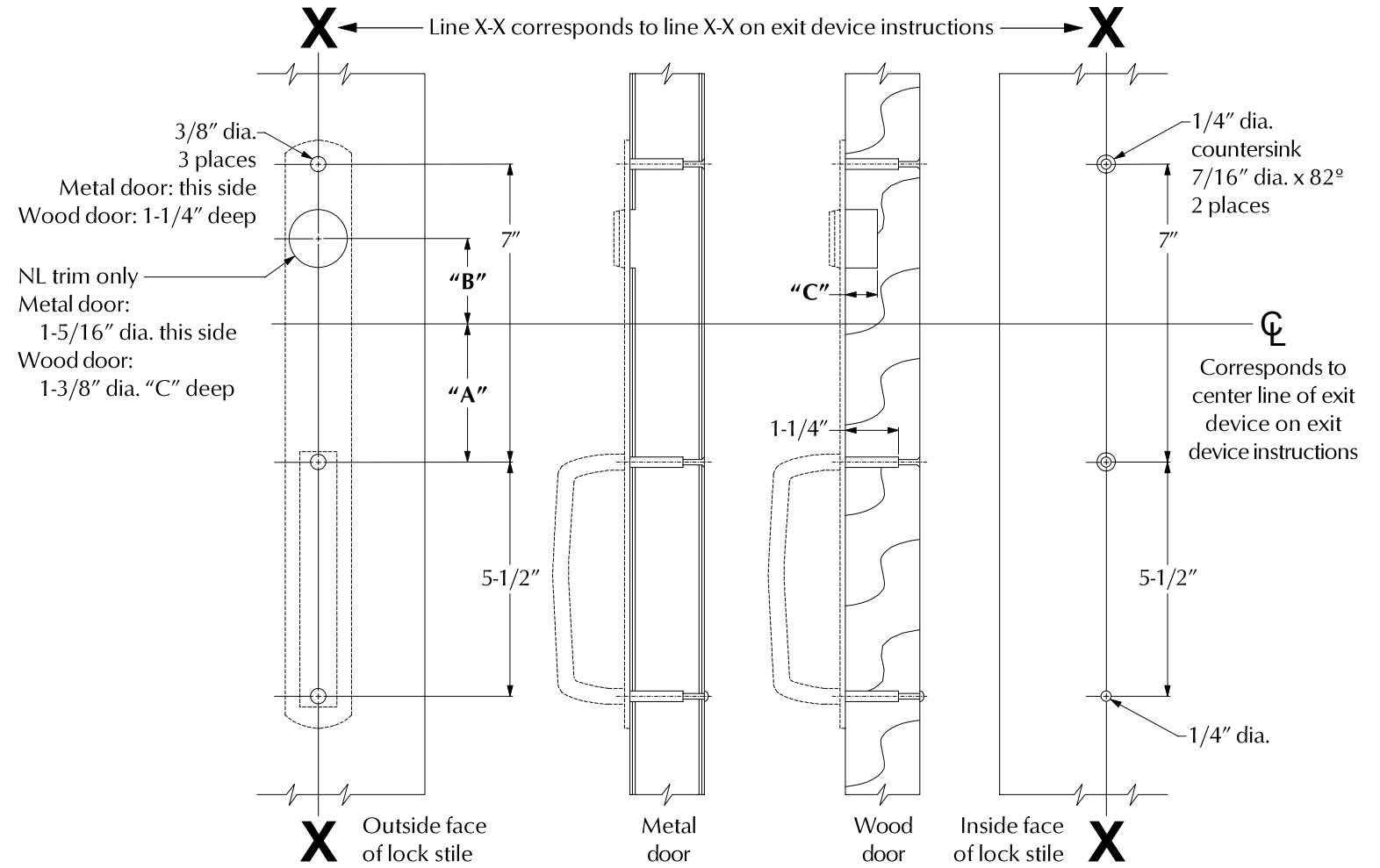
608DT/NL

VON DUPRIN

Installation Instructions

1. Prepare door for exit device. See exit device instructions for holes, line X-X, and center lines.
2. Prepare door for trim:
 - A. Transfer line X-X from inside (exit device side) of door to outside (trim side) of door. Use extra care if edge of door is beveled. Be sure line X-X is parallel to edge of door.
 - B. Locate and prepare holes as shown.
3. For NL trim with 44 Rim or or 88 Rim device, install rim cylinder.
4. Apply trim.
5. For NL trim with 44 Rim or or 88 Rim device, cut rim cylinder tailpiece to extend 5/8" to 3/4" out of exit device side of door.
6. Apply exit device.

Device(s)	Dimension "A"	Dimension "B" (NL trim only)	Dimension "C" (NL trim only)
44 Rim	3-7/8"	1/4"	thru
88 Rim	3-7/8"	1/4"	thru
44 Mortise Lock	3-11/16"	2-1/16"	3/4"
50 Mortise Lock	3-5/16"	2-7/16"	3/4"
8875 Mortise Lock	3-3/4"	2"	3/4"
44 Vertical Rod with 44 Rim	3-7/8"	not applicable	not applicable
44 Vertical Rod with 44 Mortise Lock	3-11/16"	not applicable	not applicable
8827 Vertical Rod with 88 Rim	3-7/8"	not applicable	not applicable
8827 Vertical Rod with 8875 Mortise Lock	3-3/4"	not applicable	not applicable



LHR shown, RHR opposite

For cutouts on inside face of door, see exit device instructions

Customer Service
1-877-671-7011 www.allegion.com/us



© Allegion 2014
Printed in U.S.A.
921067-00 Rev. 01/14-b