



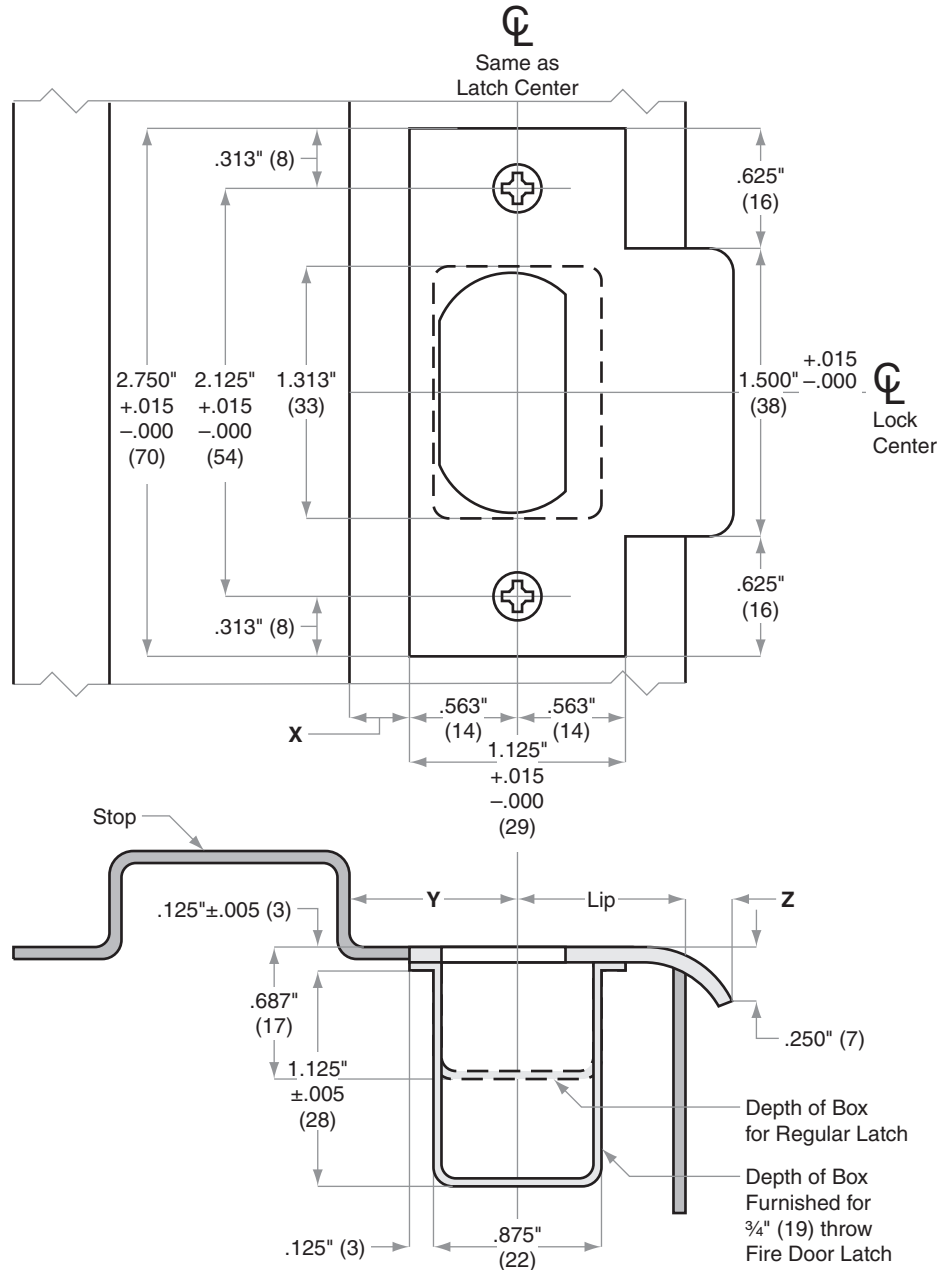
# Strikes

Models 10-001, 10-013, 10-016, 10-019

Jamb Type: Metal  
 Style: T-Strike, Square Corner  
 Standard for: A-Series | B250-Series | S-Series  
 Optional for: AL-Series | F-Series | D-Series Knobs | ND-Series Levers

### NOTE:

1. Dimensions X and Y are variables dependent on door thickness
2. Curved strike extension beyond jamb at Z must not be less than  $\frac{3}{16}$ " (5) to ensure proper functioning of latch bolt
3.  $1\frac{1}{8}$ " (29) Lip length for  $1\frac{3}{8}$ " (35) to  $1\frac{3}{4}$ " (44) doors. Other lengths available
4. Strike location on frames must be adjusted for thickness of door silencers, when used



Dimensions shown in parentheses ( ) are in millimeters.

Door preparation template