

320M

Mortise Mount Sliding Door Electromagnetic Lock



Overview

Schlage provides the industry's most complete selection of electromagnetic locks. The 320M MiniLine™ is a UL listed, for mortise mounted electromagnetic lock designed for use on sliding doors. It interfaces with electronic access control systems, automatic door operators, and fire or hazard sensing systems to provide egress upon detectable emergency. With a fail-safe design, it offers an excellent solution for both security and life safety requirements when connected to the fire alarm circuit.

The 320M has been installed in thousands of locations worldwide including airports, hospitals, nursing homes, schools, universities, libraries, museums, retail and office buildings, laboratories, and government buildings.

Features & Benefits

- 550 lb. hold force rating with 24 VDC
- Compact, mortise mount design for sliding doors
- Includes mounting tabs and armature mounting block
- Low maintenance - no moving parts
- Meets security and life safety requirements
- Field selectable 12 or 24 VDC operation
- Standard features include adjustable time delay (ATD), door status monitor (DSM), and magnetic bond sensor (MBS)
- cUL and CSFM certified
- UL 10C listed for positive pressure fire tests of door assemblies: 3 hours
- Limited lifetime warranty on magnetic coil assembly



320M Mortise Mounted Sliding Door Electromagnetic Lock Specifications

Specification	320M
Holding force	400 lbs. @ 12 VDC, 550 lbs @ 24 VDC
Input voltage	12/24 VDC
Current draw (Dual Voltage Field Selectable)	.23A @ 12 VDC .45A @ 24 VDC
Wiring	Wire leads 12" long
Lock body (L x H x D)	7" x 1-3/8" x 1-7/8"
Armature (L x H x D)	4-1/4" x 1-1/2" x 5/8"
Weight	6 lbs.

Note for wood frames: Due to higher ambient operating temperatures, it is required that the 12 VDC configuration be used.

Allegion, the Allegion logo, Schlage and the Schlage logo are trademarks of Allegion plc, its subsidiaries and/or affiliates in the United States and other countries. All other trademarks are the property of their respective owners.



M390RFK

Retrofit Electromagnetic Lock



Overview

The M390RFK is designed to retrofit the Locknetics 390+ without any additional prep. This ensures ease of installation for retrofit applications. The M390RFK comes standard with a Door Status Monitor (DSM), Magnetic Bond Sensor (MBS), and Relocking Time Delay (RTD). It's design employs a standardized circuit board with easy-to-install connectors, adjustable mounting brackets and integrated mounting screws. The armature housing was designed to eliminate noise and sagging, increasing the overall reliability of the product. The armature housing also holds magnets for the DSM feature without having to mount an additional plate to the armature, ensuring quicker, more reliable installations.

The M390RFK easily interfaces with most electronic access control systems in the market today, as well as automatic door operators and fire, or other hazard sensing systems for egress and emergency egress.

Features & Benefits

- Direct retrofit for Locknetics 390+ electromagnetic lock for outswinging doors
- Single lock model has 1500 lbs. of holding force for maximum security applications
- Automatic voltage selection (AVS)
- Adjustable mounting brackets
- Standard features include door status monitor (DSM), magnetic bond sensor with LED indicator (MBS) and a relocking time delay (RTD) of 0-110 seconds
- UL 10C listed for positive pressure fire tests of door assemblies: 3 hours
- ANSI/BHMA 156.23 Grade 1, cUL certified
- Limited lifetime warranty on magnetic coil assembly



M390RFK Retrofit Electromagnetic Lock Specifications

Specification	M390RFK
Holding force	1500 lbs.
Door type	Single outswinging only
Input voltage (standard unit)	12/24 VDC
Current draw (amps standard unit)	.65A @ 12 VDC .45A @ 24 VDC
Height	2-7/8"
Length	10-1/2"
Depth	1-5/8"
Weight (approximate)	12.4 lbs.
Certifications	ANSI/BHMA 156.23, UL 10C, cUL
Temperature	0° to 49° C (32° to 120° F)

Allegion, the Allegion logo, Schlage and the Schlage logo are trademarks of Allegion plc, its subsidiaries and/or affiliates in the United States and other countries. All other trademarks are the property of their respective owners.



M420/422

Electromagnetic Locks



Overview

M400 Series electromagnetic locks from Schlage are designed with the customer in mind to be robust, easy-to-install, and secure. The unique bayonet mounting feature makes installation easier, allowing the installer to have their hands free during the mounting process.

All M400 Series electromagnetic locks are symmetrical with field-selectable handing, allowing optimum placement of the magnet, no matter the application. They are designed to provide automatic voltage sensing for 12 and 24 volts along with polarity protection to make wiring less complex. M420 models are tested and certified to meet or exceed UL 1034 and BHMA 500 lb hold force requirements.

The M420 electromagnetic locks come in four configurations to meet your specific security needs. Single and double door models are offered in standard configurations. Plus versions of these models with “P” designations add intelligent sensing and reporting features needed to integrate with access control systems along with additional available options. Kits are available for top jamb, double door, and glass door applications.

Features & Benefits

- 500 lb. hold force rating for traffic control applications
- “Plus” models offer magnetic bond sensor (MBS), adjustable relock time delay (RTD) and door position switch (DPS)
- Automatic voltage selection (AVS)
- Symmetrical design with field-selectable handing for optimum placement
- Bayonet mount simplifies installation by eliminating the need to hold lock overhead while securing
- Armature mount pivot feature compensates for slight opening imperfections
- Optional mounting kits available for top jamb mount, double door and HERCULITE® brand glass doors
- Aluminum housing in 628 satin finish
- ANSI/BHMA 156.23 Grade 1, UL 1034, UL 10C, UL 294, cUL, CFSM certifications
- Limited lifetime warranty on magnetic coil assembly

Additional Features

All Models

- Automatic Voltage Selection (AVS) senses the voltage applied to the lock and responds accordingly

M450P/M452P

- Magnetic Bond Sensor (MBS) monitors the strength of the bond between the lock and armature so you know the door is secure
- Door Position Switch (DPS) monitors whether the door is open or closed
- Relock Time Delay (RTD) provides a relock delay that is adjustable from 1 to 30 seconds

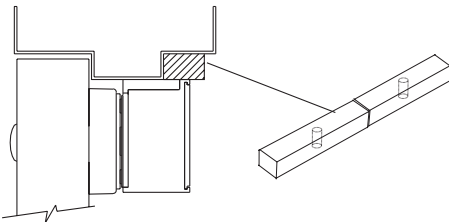
Optional accessories (P models only)

- ATS/LED Combines anti-tamper switch (ATS) with magnetic bond sensor in one kit
 - ATS provides an indication that the cover of the magnet is securely fastened to the lock and that the on board circuitry is secure
 - Magnetic bond sensor indicator (LED) provides visual indication of magnetic bond at the lock

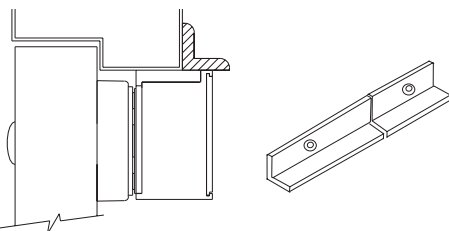
Optional Accessories (For All)

- Glass door bracket kit designed for use with HERCULITE® brand glass doors
- Top jamb (inswinging doors) kit
- Double door connector kit (converts two single magnetic locks to a double)

Filler plate



Angle bracket



M420/M422 Electromagnetic Lock Specifications

Specification	M420/M420P	M422/M422P
Holding force	Meets or exceeds BHMA standard of 500 lbs.	Meets or exceeds BHMA standard of 500 lbs.
Door type	Single	Double
Input voltage (auto selected)	12/24 VDC	12/24 VDC
Current draw	.75A @ 12 VDC .38A @ 24 VDC	1.5A @ 12 VDC .76A @ 24 VDC
Height	2-1/2"	2-1/2"
Length	9"	18-1/16"
Depth	1-3/8"	1-3/8"
Weight (approximate)	6 lbs.	12 lbs.
Certifications	UL 1034, UL 10C, UL 294, ANSI/BHMA 156.23, cUL, CSFM	UL 1034, UL 10C, UL 294, ANSI/BHMA 156.23, cUL, CSFM
Temperature	0° to 49°C (32° to 120° F)	0° to 49°C (32° to 120° F)
Wire gauge	14-22 AWG	14-22 AWG

Filler Plates and Angle Brackets Specifications

Filler Plates

Width x Height	Length	Plate No.
1-1/4" x 1/8"	9"	4201F
1-1/4" x 1/4"	9"	4202F
1-1/4" x 3/8"	9"	4203F
1-1/4" x 1/2"	9"	4204F
1-1/4" x 5/8"	9"	4205F
3/4" x 1/2"	9"	4206F
3/4" x 5/8"	9"	4207F
3/4" x 3/4"	9"	4208F

Angle Brackets

Width x Height	Length	Bracket No.
1" x 1"	9"	4201A
1-1/2" x 1"	9"	4202A
1-1/2" x 1-1/2"	9"	4203A
1-1/2" x 2"	9"	4204A
1-1/2" x 2-1/2"	9"	4205A

Allegion, the Allegion logo, Schlage, and the Schlage logo are trademarks of Allegion plc, its subsidiaries and/or affiliates in the United States and other countries. Herculite® is a registered trademark of Vitro, S.A.B. de C.V., and is not affiliated with Allegion or any of its subsidiaries.

M450/452

Electromagnetic Locks



Overview

M400 Series electromagnetic locks from Schlage are designed with the customer in mind to be robust, easy-to-install, and secure. The unique bayonet mounting feature makes installation easier, allowing the installer to have their hands free during the mounting process.

All M400 Series electromagnetic locks are symmetrical with field-selectable handing, allowing optimum placement of the magnet, no matter the application. They are designed to provide automatic voltage sensing for 12 and 24 volts along with polarity protection to make wiring less complex. M450 models are tested and certified to meet or exceed UL 1034 and BHMA 1000 lb hold force requirements.

The M450 electromagnetic locks come in four configurations to meet your specific security needs. Single and double door models are offered in standard configurations. Plus versions of these models with “P” designations add intelligent sensing and reporting features needed to integrate with access control systems along with additional available options. Kits are also available for top jamb, double door, and glass door applications.

Features & Benefits

- 1000 lb. hold force rating for high security applications
- “Plus” models offer magnetic bond sensor (MBS), adjustable relock time delay (RTD) and door position switch (DPS)
- Automatic voltage selection (AVS)
- Symmetrical design with field-selectable handing for optimum placement
- Bayonet mount simplifies installation by eliminating the need to hold lock overhead while securing
- Armature mount pivot feature compensates for slight opening imperfections
- Optional mounting kits available for top jamb mount, double door and HERCULITE® brand glass doors
- Aluminum housing in 628 satin finish
- ANSI/BHMA 156.23 Grade 1, UL 1034, UL 10C, UL 294, cUL, CFSM certifications
- Limited lifetime warranty on magnetic coil assembly

Additional Features

All Models

- Automatic Voltage Selection (AVS) senses the voltage applied to the lock and responds accordingly

M450P/M452P

- Magnetic Bond Sensor (MBS) monitors the strength of the bond between the lock and armature so you know the door is secure
- Door Position Switch (DPS) monitors whether the door is open or closed
- Relock Time Delay (RTD) provides a relock delay that is adjustable from 1 to 30 seconds

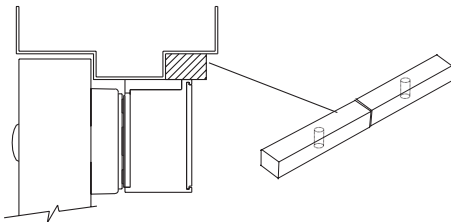
Optional accessories (P models only)

- ATS/LED Combines anti-tamper switch (ATS) with magnetic bond sensor in one kit
 - ATS provides an indication that the cover of the magnet is securely fastened to the lock and that the on board circuitry is secure
 - Magnetic bond sensor indicator (LED) provides visual indication of magnetic bond at the lock

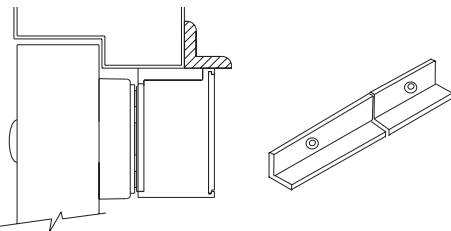
Optional accessories (for all)

- Glass door bracket kit designed for use with HERCULITE® brand glass doors
- Top jamb (inswinging doors) kit
- Double door connector kit (converts two single magnetic locks to a double)

Filler plate



Angle bracket



M450/M452 Electromagnetic Lock Specifications

Specification	M450/M450P	M452/M452P
Holding force	Meets or exceeds BHMA standard of 1000 lbs.	1000 lbs. per door leaf
Door type	Single	Double
Input voltage (auto selected)	12/24 VDC	12/24 VDC
Current draw	.75A @ 12 VDC .38A @ 24 VDC	1.5A @ 12 VDC .75A @ 24 VDC
Height	3"	3"
Length	10-1/4"	20-9/16"
Depth	1-3/4"	1-3/4"
Weight (approximate)	10 lbs.	20 lbs.
Certifications	UL 1034, UL 10C, UL 294, ANSI/BHMA156.23, cUL, CSFM	UL 1034, UL 10C, UL 294, ANSI/BHMA156.23, cUL, CSFM
Temperature	0° to 49°C (32° to 120° F)	0° to 49°C (32° to 120° F)
Wire gauge	14-22 AWG	14-22 AWG

Filler Plates and Angle Brackets Specifications

Filler Plates

Width x Height	Length	Plate No.
1-1/4" x 1/8"	10-1/4"	4501F
1-1/4" x 1/4"	10-1/4"	4502F
1-1/4" x 3/8"	10-1/4"	4503F
1-1/4" x 1/2"	10-1/4"	4504F
1-1/4" x 5/8"	10-1/4"	4505F
3/4" x 1/2"	10-1/4"	4506F
3/4" x 5/8"	10-1/4"	4507F
3/4" x 3/4"	10-1/4"	4508F

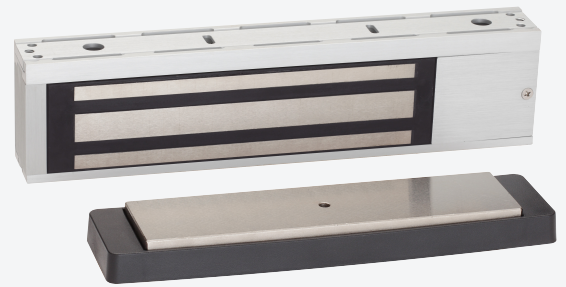
Angle Brackets

Width x Height	Length	Bracket No.
1" x 1"	10-1/4"	4501A
1-1/2" x 1"	10-1/4"	4502A
1-1/2" x 1-1/2"	10-1/4"	4503A
1-1/2" x 2"	10-1/4"	4504A
1-1/2" x 2-1/2"	10-1/4"	4505A



M490/492

Electromagnetic Locks



Overview

M400 Series electromagnetic locks from Schlage are designed with the customer in mind to be robust, easy-to-install, and secure. The unique bayonet mounting feature makes installation easier, allowing the installer to have their hands free during the mounting process.

All M400 Series electromagnetic locks are symmetrical with field-selectable handing, allowing optimum placement of the magnet no matter the application. They are designed to provide automatic voltage sensing for 12 and 24 volts along with polarity protection to make wiring less complex. M490 models are tested and certified to meet or exceed UL 1034 and BHMA 1500 lb. hold force requirements.

The M490 electromagnetic locks come in four configurations to meet your specific security needs. Single and double door models are offered in standard configurations. Plus versions of these models with “P” designations add intelligent sensing and reporting features needed to integrate with access control systems along with additional available options. Kits are also available for top jamb, double door, and glass door applications.

Features & Benefits

- 1500 lb. hold force rating for maximum security applications
- “Plus” models offer Magnetic Bond Sensor (MBS), adjustable Relock Time Delay (RTD) and Door Position Switch (DPS)
- Automatic Voltage Selection (AVS)
- Symmetrical design with field-selectable handing for optimum placement
- Bayonet mount simplifies installation by eliminating the need to hold lock overhead while securing
- Armature mount pivot feature compensates for slight opening imperfections
- Optional mounting kits available for top jamb mount, double door and HERCULITE® brand glass doors
- Aluminum housing in 628 satin finish
- ANSI/BHMA 156.23 Grade 1, UL 1034, UL 10C, UL 294, cUL, CFSM certifications
- Limited lifetime warranty on magnetic coil assembly

Additional Features

All Models

- Automatic Voltage Selection (AVS) senses the voltage applied to the lock and responds accordingly

M490P/M492P

- Magnetic Bond Sensor (MBS) monitors the strength of the bond between the lock and armature so you know the door is secure
- Door Position Switch (DPS) monitors whether the door is open or closed
- Relock Time Delay (RTD) provides a relock delay that is adjustable from 0.5 to 30 seconds

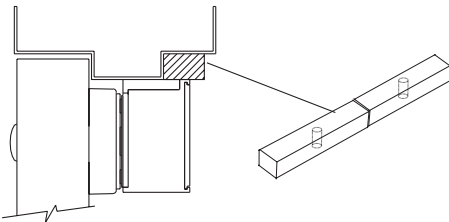
Optional accessories (P models only)

- ATS/LED combines Anti-Tamper Switch (ATS) with Magnetic Bond Sensor in one kit
 - ATS provides an indication that the cover of the magnet is securely fastened to the lock and that the on-board circuitry is secure
 - Magnetic Bond Sensor indicator (LED) provides visual indication of magnetic bond at the lock

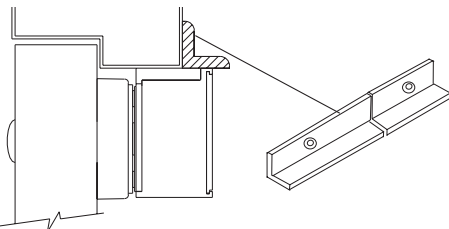
Optional Accessories (For All)

- Glass door bracket kit designed for use with HERCULITE® brand glass door
- Top jamb (inswinging doors) kit
- Double door connector kit (converts two single magnetic locks to a double)

Filler plate



Angle bracket



M490/M492 Electromagnetic Lock Specifications

Specification	M490/M490P	M492/M492P
Holding force	Meets or exceeds BHMA standard of 1500 lbs.	Meets or exceeds BHMA standard of 1500 lbs.
Door type	Single	Double
Input voltage (auto selected)	12/24 VDC	12/24 VDC
Current draw	.65A @ 12 VDC .35A @ 24 VDC	1.3A @ 12 VDC .7A @ 24 VDC
Height	3"	3"
Length	12-1/2"	25-1/16"
Depth	1-3/4"	1-3/4"
Weight (approximate)	14 lbs.	28 lbs.
Certifications	UL 10C, UL 1034, UL 294, ANSI/BHMA A156.23, cUL, CSFM	UL 10C, UL 1034, UL 294, ANSI/BHMA A156.23, cUL, CSFM
Temperature	0° to 49°C (32° to 120° F)	0° to 49°C (32° to 120° F)
Wire gauge	14-22 AWG	14-22 AWG

Filler Plates and Angle Brackets Specifications

Filler Plates

Width x Height	Length	Plate No.
1-1/4" x 1/8"	12-1/2"	4901F
1-1/4" x 1/4"	12-1/2"	4902F
1-1/4" x 3/8"	12-1/2"	4903F
1-1/4" x 1/2"	12-1/2"	4904F
1-1/4" x 5/8"	12-1/2"	4905F
3/4" x 1/2"	12-1/2"	4906F
3/4" x 5/8"	12-1/2"	4907F
3/4" x 3/4"	12-1/2"	4908F

Angle Brackets

Width x Height	Length	Bracket No.
1" x 1"	12-1/2"	4901A
1-1/2" x 1"	12-1/2"	4902A
1-1/2" x 1-1/2"	12-1/2"	4903A
1-1/2" x 2"	12-1/2"	4904A
1-1/2" x 2-1/2"	12-1/2"	4905A

Allegion, the Allegion logo, Schlage, and the Schlage logo are trademarks of Allegion plc, its subsidiaries and/or affiliates in the United States and other countries. Herculite® is a registered trademark of Vitro, S.A.B. de C.V., and is not affiliated with Allegion or any of its subsidiaries.



M490DE

Delayed Egress Electromagnetic Lock



Overview

The Schlage M490DE delayed egress electromagnetic lock is designed to meet NFPA 101 Life Safety Code while providing the same robust, easy-to-install, security of our M400 Series magnetic locks. The M490DE has a 15-second delayed egress timer with audible alarm which can be configured to trigger by an internal “plunger switch,” or by external contacts, such as a request-to-exit push bar.

All M400 Series electromagnetic locks are symmetrical with field-selectable handing, allowing optimum placement of the magnet no matter the application. They are designed to provide automatic voltage sensing for 12 and 24 volts along with polarity protection to make wiring less complex.

M490DE electromagnetic locks come in four configurations to meet your specific security needs. Single and double door models are offered in standard configurations. Plus versions of these models with “P” designations add intelligent sensing and reporting features needed to integrate with access control systems.

This easy-to-install, cost effective solution provides maximum access security and safety.

Features & Benefits

- 1300 lb. hold force rating for maximum security applications
- 15 second delay - activated by internal plunger switch or auxiliary input
- LED Indication with audible alerts
- Release input, reset input, fire alarm input
- Plus models offer magnetic bond sensor (MBS), adjustable relock time delay (RTD) and door position switch (DPS)
- Automatic voltage selection (AVS)
- Bayonet mount simplifies installation by eliminating the need to hold lock overhead while securing
- Armature pivot feature compensates for slight opening imperfections
- Aluminum housing in 628 satin finish
- ANSI/BHMA 156.24, UL special locking arrangements, UL 10C, cUL, CSFM, UL294 certifications
- Meets NFPA 101 life safety code
- BOCA compliant option available
- Limited lifetime warranty on magnetic coil assembly

Additional Features

All Models

- Auto Voltage Selection (AVS) senses the voltage applied to lock and responds accordingly
- Internal plunger switch activates delayed egress timer

Optional accessories

- Designed for use with HERCULITE® brand glass doors

M490DEP/M490DEP-2

- **Magnetic Bond Sensor (MBS)** monitors the strength of the bond between the lock and armature so you know the door is secure
- **Door Position Switch (DPS)** monitors whether the door is open or closed
- **BOCA compliant** (upon request) with options for 15- or 30-second time delay

Ordering Information

Standard Models

- **M490DE** - Single lock, 15-second delay
- **M490DE-2** - Double lock, separate housing, 15-second delay

Optional preset

- **M490DE-30S** - Single lock, factory set 30-second delay (requires fire marshal letter of approval)

Plus Models

- **M490DEP** - Single lock, 15-second delay
- **M490DEP-2** - Double lock, 15-second delay
- **M490DEP-BC** - BOCA compliant single lock, factory set 15-second delay with auto re-armed and locked state after door is opened and re-closes
- **M490DEP-BC30S** - BOCA compliant single lock, factory set 30-second delay with auto re-armed and locked state after door is opened and re-closes (requires fire marshal letter of approval)

M490DE Electromagnetic Delayed Egress Lock Specifications

Specification	M490DE/M490DEP	M490DE-2/M490DEP-2
Holding force	1300 lbs.	1300 lbs. per door leaf
Door type	Single	Double
Input voltage (auto selected)	12/24 VDC	12/24 VDC
Current draw	.75A @ 12 VDC .45A @ 24 VDC	1.25A @ 12 VDC .76A @ 24 VDC
Height	3"	3"
Length	12-1/2"	25-1/16"
Depth	3-1/16"	3-1/16"
Weight (approximate)	16 lbs.	32 lbs.
Certifications	ANSI/BHMA 156.24, UL special locking arrangement, UL10C, cUL, CSFM, UL294	
Temperature	0° to 49°C (32° to 120° F)	0° to 49°C (32° to 120° F)
Wire gauge	14-22 AWG	14-22 AWG

Filler Plates and Angle Brackets Specifications

Filler Plates

Width x Height	Length	Plate No.
1-1/4" x 1/8"	12-1/2"	4901F
1-1/4" x 1/4"	12-1/2"	4902F
1-1/4" x 3/8"	12-1/2"	4903F
1-1/4" x 1/2"	12-1/2"	4904F
1-1/4" x 5/8"	12-1/2"	4905F
3/4" x 1/2"	12-1/2"	4906F
3/4" x 5/8"	12-1/2"	4907F
3/4" x 3/4"	12-1/2"	4908F

Angle Brackets

Width x Height	Length	Bracket No.
1" x 1"	12-1/2"	4901A
1-1/2" x 1"	12-1/2"	4902A
1-1/2" x 1-1/2"	12-1/2"	4903A
1-1/2" x 2"	12-1/2"	4904A
1-1/2" x 2-1/2"	12-1/2"	4905A

M490G

Electromagnetic Gate Lock



Overview

The Schlage M490G is a weather resistant electromagnetic gate lock with 1500 lbs of holding force designed for use on all types of sliding and swinging gates. As a high security magnetic lock, it can accommodate misalignment problems while supplying superior holding force.

A 1/2" compression connector is provided for installation of 1/2" EMT conduit, ensuring protection of hook-up wiring from weather and vandalism. Heavy-duty plating resists corrosion of mating surfaces, providing a low maintenance locking device.

A modified top jamb mounting bracket allows a single M490G to be mounted in a variety of positions. The M490G gate lock may be mounted to any gate frame or post. Special brackets may be required to adapt the lock to a particular frame or post. It is important that the lock is mounted so that the armature pulls straight back from the magnet face.

The M490G can be field configured for either 12 or 24 VDC operation. Magnetic Bond Sensor (MBS) and Gate Status Monitor (DPS) are standard.

Features & Benefits

- 1500 lb. hold force rating
- Magnetic bond sensor (MBS) and gate status monitor (DPS)
- Field selectable 12 or 24VDC operation
- Built-in voltage spike suppressor
- Electroless nickel plated finish
- Corrosion and weather resistant for exterior use
- Universal mounting brackets for swinging or sliding gate applications
- 1/2" EMT compression fitting protects hookup wires from weather and vandalism
- Two foot wire leads
- Accommodates gate misalignment
- No moving parts - low maintenance
- Limited lifetime warranty on magnetic coil assembly
- ANSI/BHMA 156.23 Outdoor rated

Additional Features

M490G

- **Magnetic Bond Sensor (MBS)** monitors the strength of the bond between the lock and armature so you know the door is secure
- **Door Position Switch (DPS)** monitors whether the door is open or closed
- Universal Mounting Brackets for swinging or sliding gate applications
- Built-in voltage spike suppression
- 1/2" EMT compression fitting
- Special corrosion resistant plating

M490G Electromagnetic Gate Lock Specifications

Specification	M490G
Holding force	Meets or exceeds BHMA standard of 1500 lbs.
Input voltage (auto selected)	12/24 VDC
Current draw (amps standard unit)	.65A @ 12 VDC .35A @ 24 VDC
Height	3"
Length	11"
Depth	1-3/4"
Weight (approximate)	14 lbs.
Certifications	ANSI/BHMA 156.23 Outdoor rated
Temperature	-31° to 151° F (-35° to 66° C)
Wire gauge	14-22 AWG

Filler Plates and Angle Brackets Specifications

Filler Plates

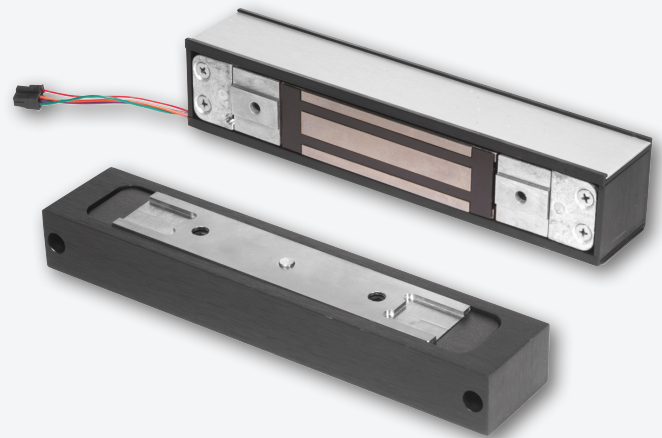
Width x Height	Length	Plate No.
1-1/4" x 1/8"	11"	49G1F
1-1/4" x 1/4"	11"	49G2F
1-1/4" x 3/8"	11"	49G3F
1-1/4" x 1/2"	11"	49G4F
1-1/4" x 5/8"	11"	49G5F
3/4" x 1/2"	11"	49G6F
3/4" x 5/8"	11"	49G7F
3/4" x 3/4"	11"	49G8F

Angle Brackets

Width x Height	Length	Bracket No.
1" x 1"	11"	49G1A
1-1/2" x 1"	11"	49G2A
1-1/2" x 1-1/2"	11"	49G3A
1-1/2" x 2"	11"	49G4A
1-1/2" x 2-1/2"	11"	49G5A

GF3000

Surface Mounted Shear Lock



Overview

GF3000 Series shear locks' patented design provides powerful holding force in low profile models for inswinging and outswinging doors. A microprocessor-based control module provides advanced electronic features. This circuitry automatically senses and adjusts input voltage, allowing for operation from 12 to 24 volt DC power sources.

The lightweight, black anodized housing can be quickly mounted without need of brackets and is finished off with a satin aluminum decorative plate for a clean look.

Features & Benefits

- 3000 lb. hold force rating
- Automatic voltage selection (AVS) 12/24 VDC (filtered and regulated)
- Built-in automatic relock switch
- Adjustable time delay on relock, 2-30 seconds
- Low temperature operation
- Microprocessor controlled
- Optional Magnetic Bond Sensor (MBS) and Door Status Monitor (DSM) to monitor the secure/not secure condition of the lock and to sense the open/closed position of the door
- Housing is black anodized with BHMA 628 satin aluminum decorative plate
- ANSI/BHMA 156.23, UL 10C, cUL, and CSFM certifications
- Limited lifetime warranty on magnetic coil assembly

GF3000 Surface Mounted Shear Lock Specifications		
Specification	GF3000SM	GF3000TJ
Holding force	3000 lbs.	3000 lbs.
Door type	Outswinging	Inswinging
Current draw	.90A @ 12 VDC .45A @ 24 VDC	.90A @ 12 VDC .45A @ 24 VDC
Lock housing (L x H x D)	9-13/16" x 1-1/4" x 1-1/2"	9-13/16" x 1-1/4" x 1-1/2"
Armature housing (L x H x D)	8-3/8" x 1-3/8" x 1/2"	8-3/8" x 1-3/8" x 1/2"
Weight	9 lbs.	9 lbs.
Certifications	UL 10C, cUL, CSFM, ANSI/BHMA 156.23	UL 10C, cUL, CSFM, ANSI/BHMA 156.23

Ordering Information

- **GF3000SM (Surface Mounted):** Surface mounted shear lock intended for use on outswinging doors. Surface mounted magnet mounts under header and surface mounted armature assembly mounts into door just under magnet assembly. Air gap adjustment is from top of door
- **GF3000TJ (Top Jamb):** Surface mounted shear lock intended for use on inswinging doors that are flush with frame's inner face. Surface mounted armature assembly mounts onto top of door or top rail and surface mounted magnet mounts onto frame's face. Air gap adjustment is from top of door.

Options

- **DSM/MBS** - Door Status Monitor/Magnetic Bond Sensor