



**Safety Technology
International**

www.sti-usa.com



Scan to
View Online

ABOUT STI

Safety Technology International manufacturers and globally distributes a wide range of unique specialty products that protect essential fire, safety, and security equipment. STI helps prevent false fire alarms, deter theft, and minimize vandalism of critically important life safety equipment.

For over 40 years, STI has remained committed to the improvement of its existing range while developing new and innovative products. Renowned as the inventor and manufacturer of the original pull station protector, STI is devoted to continuing the work Founder Jack Taylor started in 1980.



It all started with the Original Stopper®

CONTENTS

FIRE & SAFETY	Fire Pull Station Protectors, Horn/Strobe Protectors	3
ENCLOSURES	Polycarbonate, Metal, Vacuum Formed, Fiberglass, Enviromental, Heated	6
WIRE GUARDS	Smoke Detector Protectors Exit, PIR, Clock, Camera, Emergency Lights Custom Cages	14
BUTTONS & SWITCHES	Push, No Touch	18
ALARMS & SIRENS	Exit Alarms, Extinguisher Alarms, Sirens, Chimes	22

Note: See website for additional product options and specific approvals.
Subject to change without notice.

ONLINE
www.sti-usa.com/3cat15

HOW TO ORDER
sales@sti-usa.com

CUSTOMER SERVICE
(1) 248-673-9898

STAY CONNECTED

FIRE & SAFETY

Universal Stopper®

DESIGN

Protective cover with horn. Prevents false fire alarms, without hindering legitimate operation of a manual pull station in the event of an emergency.



INSTALLATION

Quick and easy protection in minutes. Can accommodate flush or surface mount applications. Gaskets included.

ELECTRONICS

95/105 dB self-contained alarm draws immediate attention to the area. Available with or without horn, powered by an included battery.

Low profile models with a horn (STI-14000 series) flash and sound.



CONSTRUCTION

Tough, clear UV-stabilized polycarbonate material. Housing can take the severest knocks preventing vandalism or accidental damage to the manual pull station.

Indoor/outdoor polycarbonate cover helps stop false fire alarms without restricting legitimate operation of pull stations. It is ideal for schools, hospitals, nursing homes, stores, hotels and public buildings of almost every kind.

Scan for
Product Series



FIRE &
SAFETY

ENCLOSURES

WIRE
GUARDS

BUTTONS &
SWITCHES

WIRELESS
PRODUCTS

ALARMS &
SIRENS



Stoper II®

Large domed cover, secured with a lanyard.
STI-1100 with horn, flush
STI-1130 with horn, surface
STI-1200 flush
STI-1230 surface



Weather Stoper®

Cover, secured with a lanyard, with gaskets, helps prevent false alarms.
STI-1150 with horn, flush
STI-1155 with horn, surface
STI-1250 flush
STI-3150 surface



Stoper II® with Back Box

Protective polycarbonate cover includes a 4" deep back box.
STI-1200A 4" deep back box
STI-1200A-HTR with heater



Universal Stoper® - Flush

Hinged protective indoor/outdoor cover, helps prevent false alarms.
STI-13010FR flush
STI-13020FR with horn, flush
See website for more options.



Universal Stoper® - Enclosed Back Box

Hinged protective indoor/outdoor cover, helps prevent false alarms.
STI-13410FR enclosed back box
STI-13420FR enclosed back box with horn
See website for more options.



Universal Stoper® - Low Profile

Hinged protective indoor/outdoor cover, helps prevent false alarms.
STI-13310FR enclosed flush back box
STI-13320FR with horn, enclosed flush back box
See website for more options.



Horn/Strobe Damage Stopper®

Protective polycarbonate cover helps prevent damage and vandalism.

- STI-1210E flush, open back box
- STI-1210D open back box, conduit knockout
- STI-1210A enclosed 4" deep back box
- STI-1210C open back box, external mounting tabs

Strobe Damage Stopper® - Wash Down

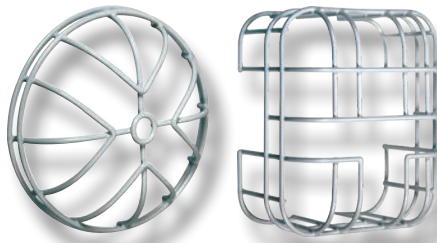
Polycarbonate with enhanced chemical resistance for severe environments.

- STI-1221A4X-WD 4" enclosed back box
- STI-1229-WD dome shape, enclosed back box
- STI-1229HTR-WD heated

Strobe Damage Stopper®

Protective polycarbonate cover helps prevent damage and vandalism.

- STI-1221D open back box, conduit knockout
- STI-1221E flush, open back box
- STI-1221A enclosed 4" deep back box
- STI-1221C open back box, external mounting tabs



Stopper® Dome

Cover protects strobe and horn/strobe units from damage and vandalism.

- STI-1229 strobe, enclosed back box
- STI-1225 strobe, flush
- STI-1215 horn/speaker/strobe, flush
- STI-1217 horn/speaker/strobe, open back box

Horn/Strobe Damage Stopper®

Wire cage protects Edwards GC, Kidde EG or System Sensor L Series horn/strobe from damage.

- STI-9750 white, ceiling mount
 - STI-9762-R red, wall mount
 - STI-9760 white, ceiling mount
- See website for more sizes.

System Record Documents Enclosure

Red metal enclosure with metal flange to help hold documents, keys and pens.

EM1212DOC 12 H x 12 W x 4" D, thumb lock

Indoor/outdoor polycarbonate cover helps prevent malicious or accidental damage to manual pull stations, electrical switches and more. Ideal for public buildings of almost any kind.

Scan for
Product Series



ENCLOSURES

Universal Stoppers®

DESIGN

Protective cover with or without horn. Prevents malicious or accidental damage to manual pull stations, electrical switches and the like.

INSTALLATION

Quick and easy protection in minutes. Accommodates flush or surface mount applications. Gaskets included.



ELECTRONICS

95/105 dB self-contained alarm draws immediate attention to the area. Available with or without horn, powered by an included battery.



ADA
Compliant

CONSTRUCTION

Tough, clear UV-stabilized polycarbonate material. Continuous hinge.



Universal Stopper® - Dome

Classic dome shape.
Helps prevent false alarms.



Universal Stopper® - Low Profile

Low profile cover helps prevent
accidental activation.



Universal Stopper® - Clear

Clear cover helps prevent damage to
switches and more.

Cover Options



Mounting Options

Flush, surface, enclosed flush
back box, enclosed surface back
box with mounting plate

Hood/Horn Options

Clear cover, hood with labeling,
hood with labeling and horn,
hood with labeling, horn & relay,
horn with flashing light

Color Options



Scan to Build
Your Model



With STI's tough protectors, you can reduce costly equipment replacement and repairs, and assure operation of important safety and security devices.

Scan for
Product Series



ENCLOSURES

Polycarbonate & Metal Enclosures

DESIGN

Helps protect a wide range of devices from vandalism and accidental damage while still allowing them to be accessible.



ELECTRONICS

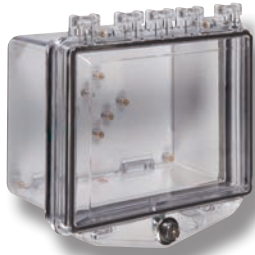
Select models available with a choice of alarm.

INSTALLATION

Several mounting options available. With or without lock. Most models include mounting hardware.

CONSTRUCTION

Tough metal or clear UV-stabilized polycarbonate material.



Polycarbonate Enclosure

Rugged protection for keypads and electronic equipment with lock.

STI-7510A enclosed deep back box, key lock
STI-7510A-OW opaque encl. deep back box, key lock



Metal Protective Cabinet

Heavy-duty 14 gauge metal with baked enamel finish includes mounting plate.

EM362408 36 H x 24 W x 8" D, thumb lock
EM362408-W with window



Metal Protective Cabinet

Heavy-duty powder coated metal enclosures protect equipment from vandalism or accidental damage. Six sizes. Lock sold separately. See website for size options.



Single-Gang Protective Cover

Help protect against damage, vandalism, and accidental activation.

STI-6519 includes mounting plate
STI-6518 with spring loaded hinge
STI-6520-S smoke color



MED Protective Cabinet

Protect and monitor important units against abuse and accidental damage.

STI-7535MED siren/strobe alarm, wire rack
STI-7533MED siren alarm, wire rack
STI-7531MED wire rack



Vacuum Formed Display Cover

Clear cover with large radius corners allows protected device to be highly visible. Protects LED displays and more against vandalism and damage.

STI-VFC01 15 H x 43 W x 6" D

STI's non-metallic EnviroArmour Enclosures are lockable and help protect from weather, vandalism, tampering and theft.

Scan for
Product Series



ENCLOSURES

EnviroArmour® Enclosures

DESIGN

Enclosures protect against vandalism and accidental damage, weather, dirt, dust and grime.

Door: removable, lockable, screw-down, has a draw-down latch.

OPTIONS

Many sizes available.
Lockable. Mounting plates available.



ELECTRONICS

A/C with heat, pressure compensation vents, filter fans, drain vents, and power distribution strips available.



CONSTRUCTION

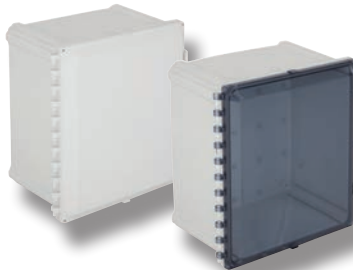
Non-metallic. Tough polycarbonate or fiberglass. UV resistant.




TYPE 4X
IP66

EnviroArmour® Fiberglass

Hot compression molded fiberglass waterproof enclosures with an opaque or window door style.
EF fiberglass enclosures
See website for sizes.




TYPE 4X
IP66

EnviroArmour® Polycarbonate

Polycarbonate waterproof enclosures with an opaque or tinted door style.
EP polycarbonate enclosures
See website for sizes.




TYPE 3R

EnviroArmour® with Filter Fan

Polycarbonate or fiberglass waterproof enclosures with vents, filter fan and thermostat.
EF fiberglass enclosures
EP polycarbonate enclosures
See website for sizes.




TYPE 3R

EnviroArmour® with Power Distribution

Polycarbonate waterproof enclosures includes 120 V power distribution strip.
EP181611-O5
See website for sizes.




TYPE 4X

Customize EnviroArmour® options: size and shape to fit custom installation, printing (company name, logo, etc.), cutouts (for vents, cameras, etc.), pole mount kits, backplates and more.




TYPE 4X
IP66

EnviroArmour® Fiberglass

Fiberglass waterproof enclosures.
EN483612-W 48 H x 36 W x 12" D with window
EN483612-O 48 H x 36 W x 12" D solid door

With STI's environmental enclosures you can reduce costly equipment replacement and repairs, and assure operation of important devices.

Scan for
Product Series

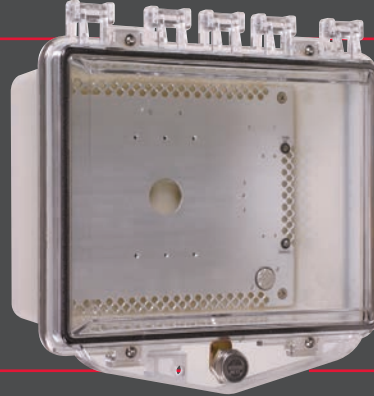


ENCLOSURES

Heated Environmental Enclosures

DESIGN

Protective enclosure with heat. Protects a wide range of devices, components and sensitive units from vandalism and accidental damage as well as weather, dirt, dust and grime.



ELECTRONICS

With or without heat and AC. Heater offers three thermostats. Radiant heat plate prevents LCD from becoming sluggish or freezing. Operates on 12, 16.5, or 24 VAC/VDC.

INSTALLATION

Several mounting options available. With or without lock. Mounting hardware and gaskets included.

CONSTRUCTION

Tough, clear UV-stabilized polycarbonate material. Powder coated metal helps protect against corrosion.




TYPE 4X

Metal Protective Enclosure

NEMA waterproof enclosure with AC/heat option.
EM362408WA 36 H x 24 W x 08" D, AC/heat, window
EM362408A 36 H x 24 W x 08" D, AC/heat
EM243608A1 24 H x 36 W x 08" D, AC/heat



Heated Polycarbonate Enclosure

Radiant heat plate prevents LCD from becoming sluggish or freezing.
STI-7510F-HTR key lock, 1.88" deep
STI-7510A-HTR key lock, 4.04" deep
STI-7511F-HTR thumb lock, 1.88" deep
STI-7511A-HTR thumb lock, 4.04" deep



TYPE 4X

Heated Type 4X Protective Enclosure

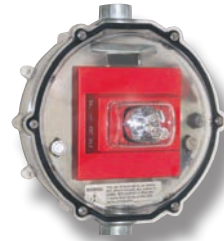
Prolongs equipment life from freezing temperatures.
STI-7520HTR heated, backplate, key lock
STI-7521HTR heated, backplate, thumb lock
STI-7520-OWHTR white, backplate, key lock




TYPE 4X

EnviroArmour® Enclosure with AC/Heat

Polycarbonate or fiberglass, durable, non-metallic, impact resistant enclosures.
EF201610-W2 20 H x 16 W x 10" D, AC/heat, window
EF201610-O2 20 H x 16 W x 10" D, AC/heat, opaque
EN483612-W2 48 H x 36 W x 12" D, AC/heat, window
See website for more sizes.




ADA
Compliant
TYPE 4X

Stopper® Dome Heated Enclosure

Protective heated enclosure for strobe units helps prevent vandalism or accidental damage.
STI-1229HTR enclosed back box
STI-1229HTR-WD enhanced chemical resistance
STI-1229HTR-HAZ hazardous locations

These heavy-duty steel cages are designed to protect smoke detectors, PIRs, exit signs and more from vandalism and misuse, while leaving the devices fully accessible and operational.

Scan for
Product Series

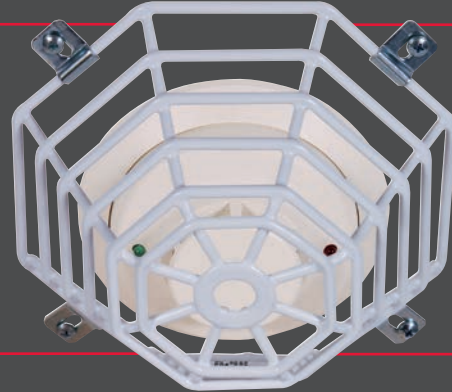


WIRE GUARDS

Steel Web Stoppers®

DESIGN

These steel cages are designed to protect devices from vandalism and misuse. Designed so there is no interference with the operation of the protected unit.



OPTIONS

Designed for flush or surface mount applications. Where additional security is required from theft or misuse, tamper resistant bits are available.



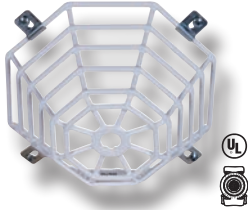
INSTALLATION

Quick and easy installation, can retrofit and protect units within minutes.

CONSTRUCTION

Constructed of 9-gauge steel wire with corrosion resistant polyester coating or 9-gauge stainless steel wire.

Smoke & Beam Detector Cages



Steel Web Stopper®

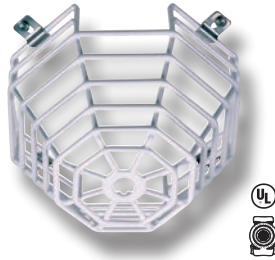
Flush mount wire cage to help prevent vandalism to smoke detector.

STI-9604 for mini smoke detectors

STI-9601 for low profile

STI-9609 for high profile

STI-9713 for photoelectric smoke detector



Steel Web Stopper®

Surface mount wire cage to help prevent vandalism to smoke detector.

STI-9605 for mini smoke detectors

STI-9602 for low profile

STI-9610 for high profile

STI-9712* for photoelectric smoke detector

*No approvals



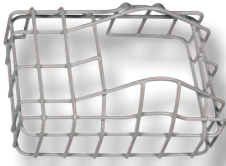
Beam Smoke Damage Stopper®

Cage helps prevent vandalism to beam type smoke detector.

STI-9706 flush mount

STI-9707 surface mount

STI-9624 protects Firearay 50/100R



Beam Smoke Damage Stopper®

Wire cage helps prevent damage to open-area smoke imaging detector.

STI-9845 protects Xtralis OSID

STI-9846 protects Xtralis reflective OSID-R



Smoke Detector Damage Stopper®

Polycarbonate protection for use where vandalism is causing false alarms.

STI-8100 flush

STI-8130 surface

STI-8100-W flush, white

STI-8100-BK flush, black



Smoke Detector Damage Stopper®

Stainless steel with a natural resistance to corrosion making it ideal where food or water is present.

STI-8200 flush, stainless steel

STI-8200-W flush, white

STI-8230 surface, stainless steel

STI-8230-W surface, white

Exit Signs & Emergency Lights



Exit Sign Damage Stopper®

Wire cage protects wall mount exit sign against accidental damage and vandalism.

STI-9740 15.5 H x 20.5 W x 6" D

STI-9640 10.5 H x 13.75 W x 2.75" D

STI-9742 16 H x 15.6 W x 3.3" D



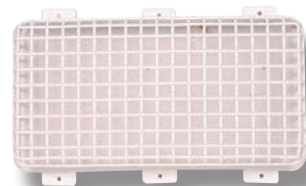
Emergency Light Damage Stopper®

Wire cage protects lights or CCTV from accidental damage and vandalism.

STI-9703 5 H x 13.5 W x 4" D

STI-9730 12 H x 12 W x 12" D

STI-9729 7 H x 7 W x 7" D



Emergency Light Damage Stopper®

Wire cage protects emergency light from accidental damage and vandalism.

STI-9644 8.5 H x 17.5 W x 5.4" D

PIR Cages



Motion Detector Damage Stopper®

Wire cage protects PIR against accidental damage and vandalism.

STI-9620 6.25 H x 4 W x 2.25" D



Motion Detector Damage Stopper®

Wire cage protects PIR against accidental damage and vandalism.

STI-9621 7 H x 5.75 W x 4.5" D

STI-9622 8.75 H x 4 W x 3.75" D



Motion Detector Damage Stopper®

Wire cage protects corner mount PIR against accidental damage and vandalism.

STI-9619 7.75 H x 5.375 W x 5.62" D

STI-9618 4.62 H x 5.37 W x 3" D

Clock & Beacon Cages



Clock/Bell Damage Stopper®

Wire cage protects clocks or bells against accidental damage and vandalism.

STI-9635 14.25" diameter x 4" D

STI-9636 20.75" diameter x 4" D

STI-9637 26.75" diameter x 4" D

Stainless steel models available.

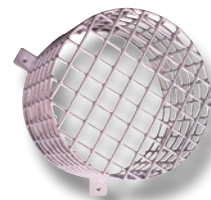


Beacon & Sounder Cage

Wire cage protects beacon/sounder against accidental damage and vandalism.

STI-9664 5.1" diameter x 6.8" D

STI-9665 6.6" diameter x 8.5" D



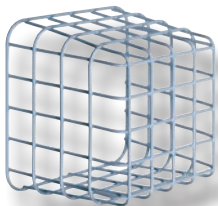
Beacon & Sounder Cage

Protect beacon/sounder against accidental damage and vandalism.

STI-9614 7.8" diameter x 6" D

STI-9617 5.9" diameter x 5" D

CCTV, Speaker & Custom Cages



CCTV Guard

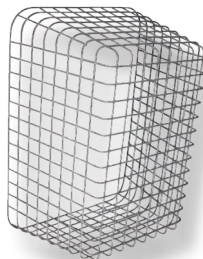
Wire cage designed to protect security equipment from vandalism.

STI-9729 7 H x 7 W x 7" D

STI-9730 12 H x 12 W x 12" D

STI-9731 12 H x 12 W x 8" D

STI-9732 18 H x 15 W x 13" D



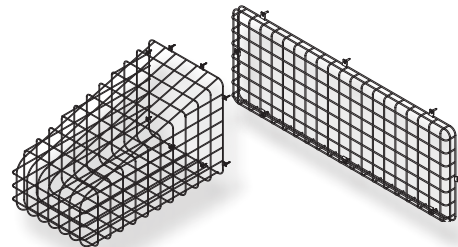
Speaker Guard

Wire cage protects large speakers and more from vandalism and accidental damage.

STI-241416 24 H x 14 W x 16" D

STI-282121 28 H x 21 W x 21" D

STI-101075 75 H x 10 W x 10" D



Custom Wire Guards

Contact STI's friendly sales team to assist in developing a custom wire cage to your specifications. Protect appliances from vandalism and accidental damage. Available in stainless steel or corrosion resistant polyester coated steel wire.

BUTTONS & SWITCHES

Stopper[®] Stations

ADA Compliant multipurpose buttons/ switches cover a wide range of applications indoors and outdoors. A number of standard models are available or STI can create custom units to meet specific needs.

Scan for
Product Series



DESIGN

Incorporates a unique, patented design that helps dramatically stop accidental activation.

INSTALLATION

5VA flammability rating on backplate and spacer.



ELECTRONICS

Multiple button functions available:

Key-to-Reset, Momentary, Turn-to-Reset, Pneumatic, Key-to-Activate, Weather Resistant Momentary

Three 12-24 volt LED color indicators.



CONSTRUCTION

Station housing molded of tough polycarbonate. Stainless steel backplate.

FIRE &
SAFETY

ENCLOSURES

WIRE
GUARDS

BUTTONS &
SWITCHES

WIRELESS
PRODUCTS

ALARMS &
SIRENS

Scan to
Build Your
Model



cUL^{us}
ADA
Compliant



cUL^{us}
ADA
Compliant



cUL^{us}
ADA
Compliant



cUL^{us}
ADA
Compliant

Stopper® Station
3-in-1, Illuminated
Momentary, Key-to-Reset,
Turn-to-Reset

Stopper® Station
Weather Resistant Momentary
Illuminated

Stopper® Station
Turn-to-Reset with Shield

Stopper® Station
Key-to-Reset with Universal Stopper®
enclosure with sounder

Color Options



Activation Options

Key-to-Reset, Momentary,
Turn-to-Reset, Pneumatic,
Weather Resistant Momentary,
Key-to-Activate
(SOME ILLUMINATED)

Text Options

ABORT
EMERGENCY
EMERGENCY
EXIT
EVACUATION
EXIT
EMERGENCY POWER OFF
FUEL PUMP SHUT DOWN
HVAC SHUT DOWN
LOCKDOWN
PUSH TO EXIT
Custom Text

Language Options

English
Spanish
French
Any language

Cover Options

Universal Stopper® Enclosure
Flush or Surface,
with or without Horn; Shield with
or without sounder



Stainless Steel NoTouch® IR Switch

Hands-free infrared wave action. 3 standard activation instructions: EXIT, OPEN, running/exit symbol.

NT-SS00*-EN slim line

NT-SS10*-EN single-gang

NT-SS20*-EN double-gang

NT-SS30*-EN European double-gang

*0 door symbol, 1 EXIT, 2 OPEN



Foreign Language IR Switch

Available with Spanish or French labeling.

Other languages as a custom order.

See website for details.



Cast Aluminum NoTouch® IR Switch

Hands-free infrared wave action.

3 illuminated snap-in message plates.

NT-CA100-EN US single-gang

NT-CA300-EN European single-gang

Scan for
Product
Series





UL^{US}
ADA



ADA



UL^{US}
ADA
Compliant

Universal Button

Momentary push button offers over 300 combinations in one package.

UB-1 button kit

UB-2 2" button

UB-1-LTUL button with latching timer

UB-2-LTUL 2" button with latching timer

Universal Pneumatic Button

Opens or closes a circuit and has timed delay reset. Includes EXIT & blank message plates.

UB-1PN pneumatic button

UB-2PN 2" pneumatic button

Global ReSet

Indoor/outdoor resettable button simulates break activation without broken glass. 5 colors, text options, protective cover options.

— 5 Color Options —



Scan to
Build Your
Model



STI's highly effective alarm can help lessen the fear of security concerns. It helps stop unauthorized exits and entries into a building, as well as theft. When activated, it flashes and emits a piercing horn.

Scan for
Product Series



ALARMS & ALERTS

Exit Stopper®

DESIGN

Highly visible "stop sign" design acts as a deterrent. Visual and audible warning. Included label allows warning in two languages.

INSTALLATION

May be mounted on top, right, left or next to almost any door. Unit is completely self-contained.



ELECTRONICS

Set to sound for 30 seconds, 3 minutes or continuous 95/105 dB warning horn.

CONSTRUCTION

Virtually indestructible polycarbonate housing.

Exit & Extinguisher Alarms



Exit Stopper®

Alarm flashes and alerts to any unauthorized exits or entries. Includes 21 language labels.
STI-6400 multifunction door alarm
STI-6402 double door alarm
STI-6404 double door, remote horn
STI-6405 momentary reset



Fire Extinguisher Theft Stopper®

Self-contained alarm helps deter theft, misuse or vandalism to fire extinguishers and other equipment. Includes 21 language labels.
STI-6200 theft alarm



Mini Theft Stopper®

Alarm for use with cabinet. Helps prevent theft and misuse of fire extinguisher and more.
STI-6255 reed and clip activation
STI-6254 reed activation

Sirens/Strobes & Chimes



Select-Alert Alarm Mini Controller

Alarm and flashing LEDs alert to any unauthorized use of important devices. Offers 32 siren choices, 5 colors.
STI-SA5000-*
* Colors - red, blue, green, amber or white



Select-Alert Siren/Strobe

Combination of alarm and flashing LEDs. 32 siren choices and 8 flash patterns.
SA5500-* round, weather resistant
SA5600-* rectangle, tamper resistant lens
* Colors - red, blue, green, amber, white or clear (STI-SA5500 only)



Wireless Chimes

Alerts when a door is opened or a doorbell button is pressed. 500 foot operating range.
STI-3360 entry alert
STI-3350 doorbell chime
STI-3610 motion-activated
STI-3300 doorbell extender (No UL)



**Safety Technology
International**



**Scan to
View Online**

2306 Airport Road Waterford, MI 48327 U.S.A.

Phone: 248-673-9898

www.sti-usa.com

2023_02