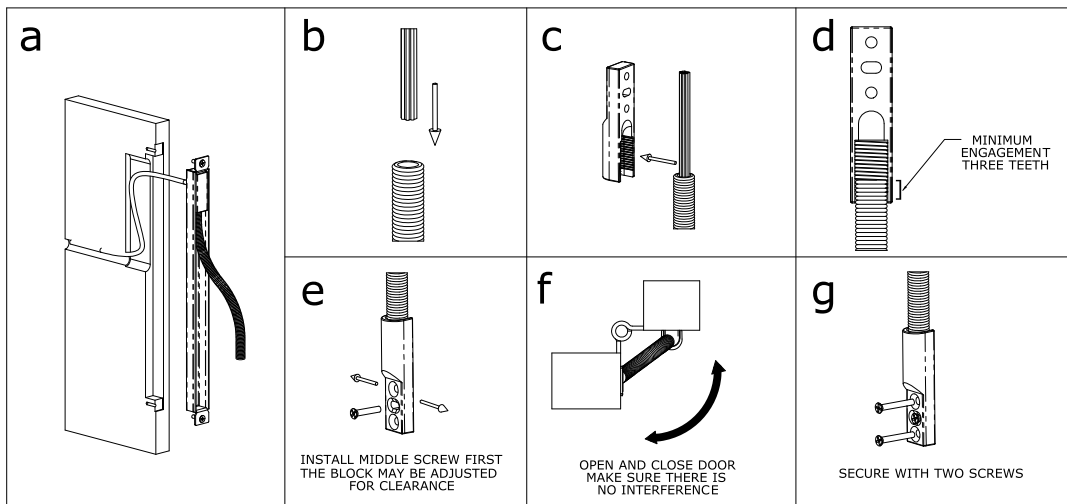
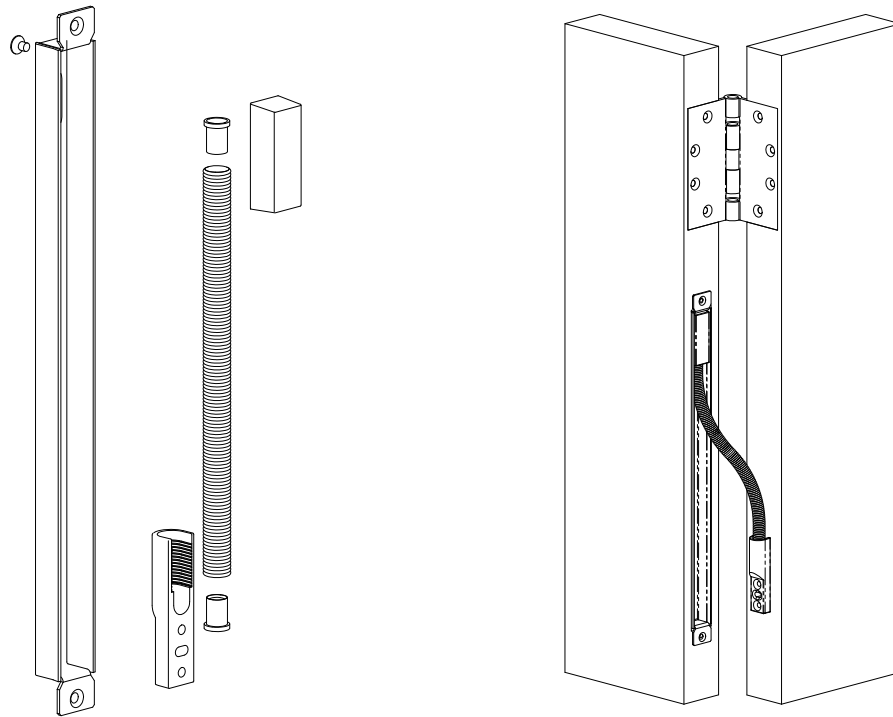


SEPT ELECTRICAL POWER TRANSFER INSTALLATION INSTRUCTIONS



Electrical

The following chart shows the electrical specifications for each SEPT model.

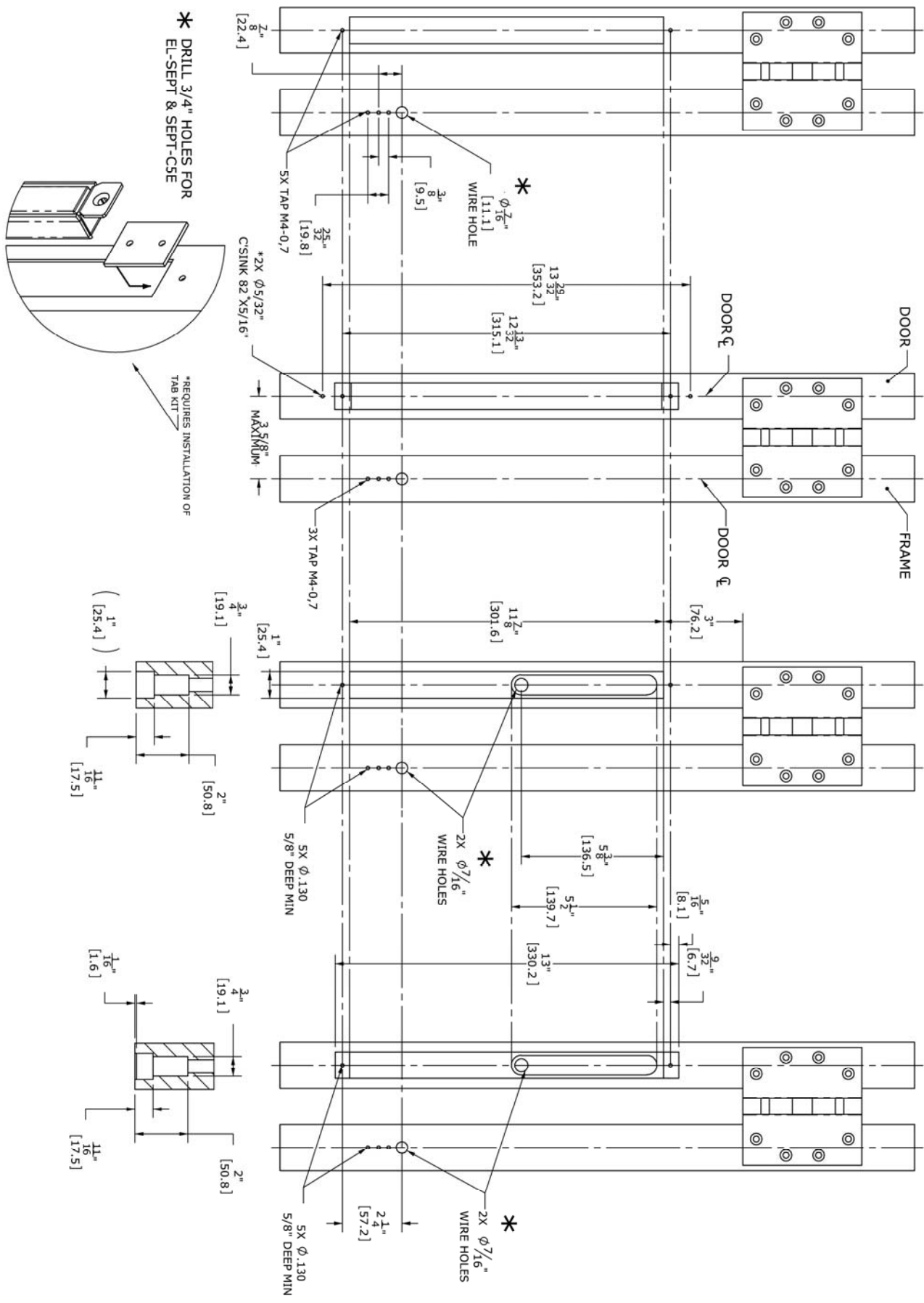
MODEL	TYPE	WIRE SIZE/QTY	CURRENT LIMIT (Per Wire)
SEPT	No wires furnished	22 AWG min./user defined	Max. 1A
SEPT-10	10 Wire (2+8)	18 AWG/2	Max. 5A
		22 AWG/8	Max. 1A
EL-SEPT	ElectroLynx® (8+4)	22 AWG/12	Max. 1A
SEPT-C5E	CAT 5e (8+1)	24 AWG/8	Max. 1A
		22 AWG/1	Ground (Max. 1A)

METAL DOOR

METAL DOOR FLUSH MOUNT*

WOOD DOOR

WOOD DOOR FLUSH MOUNT



* DRILL 3/4" HOLES FOR EL-SEPT & SEPT-CSE

*REQUIRES INSTALLATION OF TAB KIT

* $\phi 7/16$ WIRE HOLE

* 2X $\phi 7/16$ WIRE HOLES

* 2X $\phi 7/16$ WIRE HOLES

5X $\phi .130$ 5/8" DEEP MIN

5X $\phi .130$ 5/8" DEEP MIN

*2X $\phi 5/32$ C-SINK 82 X5/16"

3X TAP M4-0.7

3X TAP M4-0.7

5X $\phi .130$ 5/8" DEEP MIN

5X $\phi .130$ 5/8" DEEP MIN

