

# SEM SERIES

## ACCESSORIES

### EXTENSIONS

#### COUPLER ASSEMBLY KIT, SEM7810-514

Coupler assembly is required for each door needing extension(s). Kit includes coupler link and ball pivot (alone serves as a 1-1/2" extension).

#### Extension, SEM7810-E050

Standard metal 1/2" extension.

#### Extension, SEM7810-E075

Standard metal 3/4" extension.

#### Extension, SEM7810-E100

Standard metal 1" extension.

#### Extension, SEM7810-E200

Standard metal 2" extension.

#### Extension, SEM7810-E400

Standard metal 4" extension.

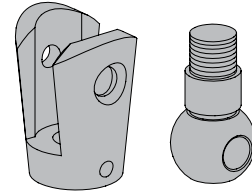
#### EXTENSION KIT, SEM7810-517

Extension kit includes:

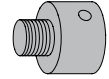
- 10.....7810SEM-E050
- 10.....7810SEM-E075
- 10.....7810SEM-E100
- 5.....7810SEM-E200
- 20.....7810SEM-514

*NOTE: Using just the Coupler Assembly Kit (SEM7810-514) will create a 1-1/2" link. Extension Links are available in different lengths and can be combined together to achieve the desired length. Max. recommended length = 12"*

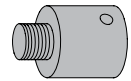
514



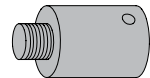
E050



E075



E100



E200



E400



517

