

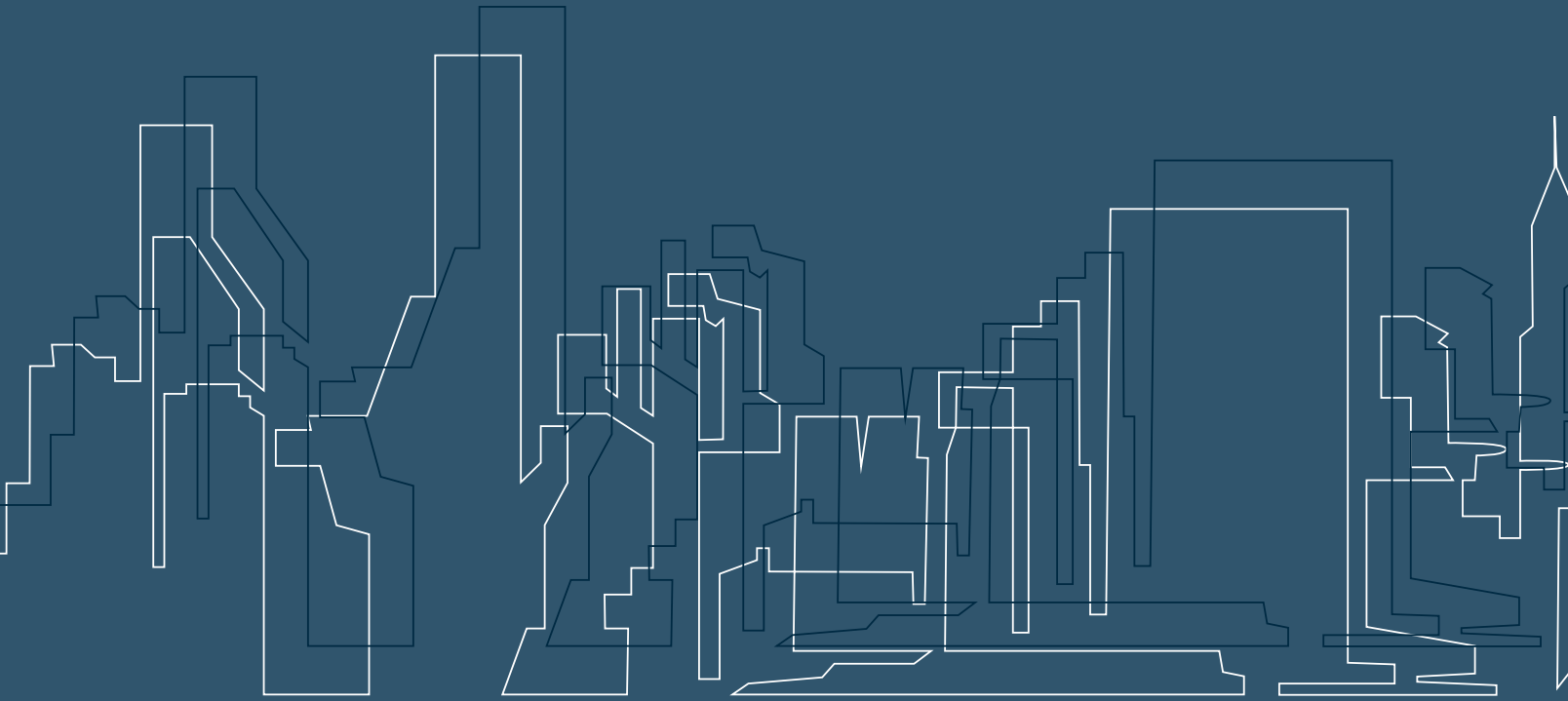
Product Pricelist

U.S. & Canada Effective Date: April 17, 2023



Experience a safer
and more open world

SECURITRON
ASSA ABLOY



Product Pricelist

U.S. & Canada Effective date April 17, 2023

Securitron Products

Electromagnetic Locks		Push Buttons & Egress Devices	
Intelligent Maglocks®		XMS Exit Motion Sensor	15
M380E EcoMag®	3	Emergency Exit Buttons	
M680E EcoMag®	3	EEB	15
Delayed Egress Maglocks®		Push Buttons	
DEM680E EcoMag®	3	PB	15
iMXDa	4	PB2	16
iEXDa	4	PB3	16
Durable Maglocks®		PB4L	17
M32	4	PB5	17
M62	5	MK Mortise Key Switches	18
M82	5	KP-1 Tubular Key Switches	18
M32, M62, M82 Brackets	6	WSS Wave Sense Switch	19
M32, M62, M82 Lock Housing	6	SP-1 Capacitive Switch	19
M32, M62, M82 Dress Covers	7	Egress Bars	
M32, M62, M82 Accessories	7	DSB	20
M38	8	TSB	20
M68	8	EMB	21
Universal Maglock® Accessories	8	Egress Handles	
DM62	10	TSH	21
Recessed Maglocks®		EMH	21
M34R	10	Power	
Shear Aligning Maglocks®		AQD Series Power Supplies	22
SAM, SAM2	10	AQL Series Power Supplies	24
Electromagnetic Cabinet Locks		BPS Linear Power Supplies	25
MCL	11	BPSS Solar Power Supplies	26
M32-SS	11	AQE Single-Port PoE	26
Specialty Locks		PSP Plug-In Power Supplies	26
GL1 Gate Lock	11	Additional Power Products	27
MM15 Electromechanical Maglock®	12	Power Transfers	
Keypads & Card Readers		CEPT Concealed Electrical Power Transfers	28
Stand Alone Keypads		SEPT Square-Cut Electrical Power Transfers	28
DK-12	13	EPT Electrical Power Transfers	29
Keypad Systems		EH Electric Hinges	29
DK-16	13	TSB-C Door Cords	29
DK-26	13	Accessories	
Wiegand Keypads		DT-7, PZ1, TM-2, TM-9 Timers & Alarms	30
DK-37	13	BA-DPA Door Prop Alarm Monitoring	30
DK-38	14	DPS Door Position Switches	30
Aperio® Wireless Card Reader Kits		MSS Magnetic High Security Door Position Switch	31
R100H	14	LM Latch Monitor Status Switch	31
DR100H	14	RB-4, RLP Relay Boards & Logic Packs	31
Warranties Terms & Conditions		Warranties Terms & Conditions	
		Warranties, Terms & Conditions	32



Electromagnetic Locks

M380E EcoMag® 600 lbs. Intelligent Magnalocks®

MODEL	DESCRIPTION	605	606	612	613E	628	629	630	BSP
M380EBD	BondSTAT, DPS	\$956	\$956	\$956	\$851	\$731	\$956	\$956	\$851
M380EBDX	BondSTAT, DPS, REX	\$1139	\$1139	\$1139	\$1034	\$912	\$1139	\$1139	\$1034



How to Order *Specify quantity and the following information. Order related products separately.*

MODEL SERIES	ACCESSORY OPTIONS	FINISH OPTIONS*
M380EBD	X	- 606
M380EBD 600 lbs with BondSTAT Monitor & Door Position Switch	(blank) No Accessory Options X PIR Request to Exit	628/US28 Satin Aluminum Clear 605/US3 Bright Brass 606/US4 Satin Brass 612/US10 Satin Bronze 613E Dark Oxidized Satin Bronze 629 Bright Stainless Steel 630 Satin Stainless Steel BSP Black Suede Powder

M680E EcoMag® 1,200 lbs Intelligent Magnalocks®

MODEL	DESCRIPTION	605	606	612	613E	628	629	630	BSP
M680E	Standard Model					\$783			
M680EBD	BondSTAT, DPS	\$1061	\$1061	\$1061	\$956	\$834	\$1061	\$1061	\$956
M680EBDX	BondSTAT, DPS, REX	\$1244	\$1244	\$1244	\$1139	\$1015	\$1244	\$1244	\$1139



How to Order *Specify quantity and the following information. Order related products separately.*

MODEL SERIES	MONITORING OPTIONS	ACCESSORY OPTIONS	FINISH OPTIONS*
M680E	BD	X	- 606
M680E (1,200 lbs)	(blank) No Monitoring BD BondSTAT Monitor & Door Position Switch	(blank) No Accessory Options X PIR Request to Exit	628/US28 Satin Aluminum Clear 605/US3 Bright Brass 606/US4 Satin Brass 612/US10 Satin Bronze 613E Dark Oxidized Satin Bronze 629 Bright Stainless Steel 630 Satin Stainless Steel BSP Black Suede Powder

DEM680E EcoMag® 1,200 lbs. Delayed Egress Magnalocks®

MODEL	DESCRIPTION	605	606	612	613E	628	629	630	BSP
DEM680E	Standard Model (Supports HUGS)	\$1664	\$1664	\$1664	\$1559	\$1427	\$1664	\$1664	\$1559
DEM680E-CA15S	California 15 Second Compliant	\$1664	\$1664	\$1664	\$1559	\$1427	\$1664	\$1664	\$1559
DEM680E-CA30S	California 30 Second Compliant	\$1664	\$1664	\$1664	\$1559	\$1427	\$1664	\$1664	\$1559
DEM680E-CH	Chicago Compliant	\$1664	\$1664	\$1664	\$1559	\$1427	\$1664	\$1664	\$1559



How to Order

MODEL SERIES	TIMING OPTIONS	FINISH OPTIONS
DEM680E		- 606
Delayed Egress M680 EcoMag	(blank) Standard Model (Supports HUGS) -CA15S California 15 Second Compliant -CA30S California 30 Second Compliant -CH Chicago Compliant	628 Satin Aluminum Clear 605 Bright Brass 606 Satin Brass 612 Satin Bronze 613E Dark Oxidized Satin Bronze 629 Bright Stainless Steel 630 Satin Stainless Steel BSP Black Suede Powder

iMXDa Internal Initiation Delayed Egress Magnalock®

ITEM	DESCRIPTION	PRICE
iMXDa	Adjustable Timing	\$1530
iMXDa-CA15S	California 15 Second Compliant	\$1530
iMXDa-CA30S	California 30 Second Compliant	\$1530
iMXDaCH	Chicago Compliant	\$1530
iMXDaH	Supports HUGS	\$1530



iEXDa External Initiation Delayed Egress Magnalock®

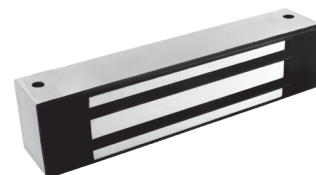
ITEM	DESCRIPTION	PRICE
iEXDa	External Initiation	\$1375

Delayed Egress Magnalock® Accessories

ITEM	DESCRIPTION	PRICE
BA-XDT-12	12 VDC Boxed Alarm & Door Label Exit Delay Timer	\$310
BA-XDT-24	24 VDC Boxed Alarm & Door Label Exit Delay Timer	\$310
EXD-1L	Label & Documentation Exit Delay System	\$27
FA-XDT-12	12 VDC, Flush Mount with Alarm & Door Exit Delay Timer	\$310
FA-XDT-24	24 VDC, Flush Mount with Alarm & Door Exit Delay Timer	\$310
SB-MXD	Sex Bolt Kit — Door Movement	\$225
XDT-12	12 VDC Exit Delay Timer	\$205
XDT-24	24 VDC Exit Delay Timer	\$193

M32 600 lbs Durable Magnalocks®

ITEM	DESCRIPTION	PRICE
M32	No Monitoring	\$435
M32B	BondSTAT Monitor	\$556
M32BD	BondSTAT Monitor & Door Position Switch	\$624
M32D	Door Position Switch	\$514
M32F	Face Drilled, No Monitoring	\$435
M32FB	Face Drilled, BondSTAT Monitor	\$556
M32FBD	Face Drilled, BondSTAT Monitor & Door Position Switch	\$624
M32FD	Face Drilled, Door Position Switch	\$514

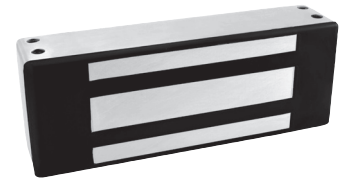


How to Order *Specify quantity and the following information. Order related products separately.*

MODEL SERIES	MOUNTING METHOD	MONITORING OPTIONS	STRIKE PLATE OPTIONS
M32		BD	-SS
M32 (600 lbs)	(blank) Direct Mount F Face Drilled	(blank) No Monitoring B BondSTAT Monitor D Door Position Switch BD BondSTAT Monitor & Door Position Switch	(blank) Standard Strike SS Split Strike (Add \$152)* SASM Shock Absorbing Strike Mount (Add \$95)

*D and BD monitoring options not available with (SS) Split Strike option.

M62 1,200 lbs Durable Magnalocks®



ITEM	DESCRIPTION	PRICE
M62	No Monitoring	\$556
M62B	BondSTAT Monitor	\$677
M62BD	BondSTAT Monitor & Door Position Switch	\$745
M62D	Door Position Switch	\$636
M62F	Face Drilled	\$556
M62FB	Face Drilled, BondSTAT Monitor	\$677
M62FBD	Face Drilled, BondSTAT Monitor & Door Position Switch	\$745
M62FD	Face Drilled, Door Position Switch	\$636
M62G	Gate Conduit	\$593
M62GB	Gate Conduit, BondSTAT Monitor	\$715
M62GBD	Gate Conduit, BondSTAT Monitor & Door Position Switch	\$786
M62GD	Gate Conduit, Door Position Switch	\$675
M62FG	Face Drilled, Gate Conduit	\$592
M62FGB	Face Drilled, Gate Conduit, BondSTAT Monitoring	\$713
M62FGBD	Face Drilled, Gate Conduit, BondSTAT Monitoring & Door Position Switch	\$784
M62FGD	Face Drilled, Gate Conduit, Door Position Switch	\$677
M62FG-EX	Face Drilled, Gate Conduit for Hazardous Locations	\$592
M62FGB-EX	Face Drilled, Gate Conduit with BondSTAT Monitoring for Hazardous Locations	\$713
M62FGBD-EX	Face Drilled, Gate Conduit with BondSTAT Monitoring & Door Position Switch for Hazardous Locations	\$784
M62FGD-EX	Face Drilled, Gate Conduit with Door Position Switch for Hazardous Locations	\$677
M62G-EX	Gate Conduit for Hazardous Locations	\$593
M62GB-EX	Gate Conduit with BondSTAT Monitoring for Hazardous Locations	\$715
M62GBD-EX	Gate Conduit with BondSTAT Monitoring & Door Position Switch for Hazardous Locations	\$786
M62GD-EX	Gate Conduit with Door Position Switch for Hazardous Locations	\$675

NEW

How to Order Specify quantity and the following information. Order related products separately.

MODEL SERIES	MOUNTING METHOD	MONITORING OPTIONS	STRIKE PLATE OPTIONS
M62	FG	BD	-SS
M62 (1200 lbs)	(blank) Direct Mount F Face Drilled G Gate Conduit	(blank) No Monitoring B BondSTAT Monitor D Door Position Switch BD BondSTAT Monitor & Door Position Switch	(blank) Standard Strike OS Offset Strike SS Split Strike (Add \$152)* SASM Shock Absorbing Strike Mount (Add \$95) EX Hazardous Locations

*D and BD monitoring options not available with (SS) Split Strike option.

M82 1,800 lbs Durable Magnalocks®



ITEM	DESCRIPTION	PRICE
M82B	BondSTAT Monitor	\$779
M82BD	BondSTAT Monitor & Door Position Switch	\$850
M82FB	Face Drilled, BondSTAT Monitor	\$779
M82FBD	Face Drilled, BondSTAT Monitor & Door Position Switch	\$850
M82GB	Gate Conduit, BondSTAT Monitor	\$820
M82GBD	Gate Conduit, BondSTAT Monitor & Door Position Switch	\$888
M82FGB	Face Drilled, Gate Conduit, BondSTAT Monitor	\$821
M82FGBD	Face Drilled, Gate Conduit, BondSTAT Monitor & Door Position Switch	\$890

How to Order Specify quantity and the following information. Order related products separately.

MODEL SERIES	MOUNTING METHOD	MONITORING OPTIONS	STRIKE PLATE OPTIONS
M82	FG	BD	-SS
M82 (1800 lbs)	(blank) Direct Mount F Face Drilled G Gate Conduit	B BondSTAT Monitor BD BondSTAT Monitor & Door Position Switch	(blank) Standard Strike OS Offset Strike SS Split Strike (Add \$152)* SASM Shock Absorbing Strike Mount (Add \$95)

*D and BD monitoring options not available with (SS) Split Strike option.

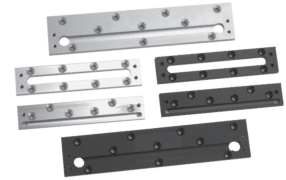
Aluminum Frame Spacer Bracket

MODEL	DESCRIPTION	BK	CL
ASB-32	For M32	\$75	\$56
ASB-62	For M62	\$76	\$56
ASB-82	For M82	\$106	\$91



Concrete/Wood Bracket

MODEL	DESCRIPTION	BK	CL
CWB-32	For M32	\$85	\$71
CWB-62	For M62	\$76	\$80
CWB-82	For M82	\$115	\$100



Adjustable Z-Bracket

MODEL	DESCRIPTION	BK	CL	SS
ZA-32/62	For M32 and M62	\$214	\$198	\$224
ZA-82	For M82	\$259	\$238	\$268



How to Order *Specify quantity and the following information. Order related products separately.*

BRACKET TYPE	MODEL SERIES	STRIKE PLATE OPTIONS
ASB	-32	BK
ASB Aluminum Frame Spacer Bracket	32	BK Black Anodized
CWB Concrete/Wood Bracket	62	CL Clear Anodized
ZA Adjustable Z-Bracket	82	SS Satin Stainless

Lock Housing

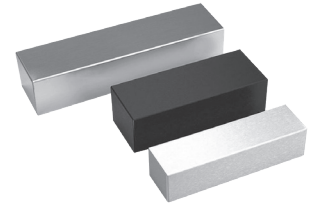
ITEM	DESCRIPTION	PRICE
HHD-32	Lock Housing for M32 - Dbl. Horizontal	\$1300
HHD-62	Lock Housing for M62 - Dbl. Horizontal	\$1400
HHD-82	Lock Housing for M82 - Dbl. Horizontal	\$1500
HHSL-32	Lock Housing for M32 - SLR Horizontal	\$1154
HHSL-62	Lock Housing for M62 - SLR Horizontal	\$1060
HHSR-32	Lock Housing for M32 - SRR Horizontal	\$1154
HHSR-62	Lock Housing for M62 - SRR Horizontal	\$1060
HVD-32	Lock Housing for M32 - Dbl. Vertical	\$1300
HVD-62	Lock Housing for M62 - Dbl. Vertical	\$1400
HVD-82	Lock Housing for M82 - Dbl. Vertical	\$1500

HHD Max Length 96", HHSL Max Length 48", HHSR Max Length 48", HVD Max Length 96"



Dress Covers

MODEL	DESCRIPTION	BK	BP	CL	SP
DC-32	For M32	\$58	\$150	\$57	\$141
DC-62	For M62	\$58	\$150	\$57	\$141
DC-82	For M82	\$72	\$157	\$65	\$149
DDC-32	Double — For M32	\$155		\$155	
DDC-62	Double — For M62	\$155		\$155	



How to Order

Specify quantity and the following information. Order related products separately.

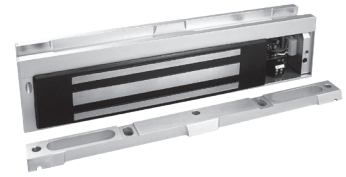
DRESS COVER	MODEL	FINISH
DC	- 32	BK
DC Dress Cover	32	BK Black Anodized
DDC Double Dress Cover (available in models 32 & 62 in BK and CL finishes only)	62	BP Brass Polished
	82	CL Clear Anodized
		SP Stainless Polished

M32, M62, M82 Accessories

ITEM	DESCRIPTION	PRICE
AOS-62	Offset Strike Plate for M62	\$149
AOS-62D	Offset Strike Plate for M62D	\$185
AOS-82	Offset Strike Plate for M82	\$197
APS-32	Strike Plate for M32	\$140
APS-62	Strike Plate for M62	\$157
APS-82	Strike Plate for M82	\$183
ASS-32	Strike Plate for M32— Split Set with Fasteners & Sex Bolt	\$197
ASS-62	Strike Plate for M62— Split Set with Fasteners & Sex Bolt	\$222
ASS-82	Strike Plate for M82— Split Set with Fasteners & Sex Bolt	\$247
EASB-250	Energy Absorbing Bolt — 1/4" Spacer Kit	\$59
EASB-32	Energy Absorbing Sex Bolt for M32	\$312
EASB-62	Energy Absorbing Sex Bolt for M62	\$460
EASB-82	Energy Absorbing Sex Bolt for M82	\$502
MTK-32/62	Metal marking template for M32, M62	\$92
SASM	Shock Absorbing Strike Mount for M32, M62, M82	\$95
SB-1	Sex Bolt Replacement, Clear	\$17
SB-1-03	Sex Bolt Replacement, Polished Brass	\$40
SB-1-10B	Sex Bolt Replacement, Oil-Rubbed Bronze	\$40
TDK-1	Thick Door Kit	\$35

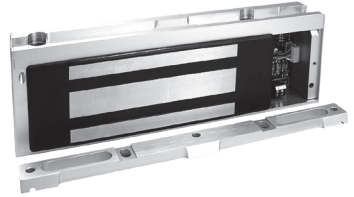
M38 600 lbs. Durable Magnalocks®

ITEM	DESCRIPTION	PRICE
M38	12/24 VDC	\$575
M38D	12/24 VDC, DPS	\$669
M38DL	12/24 VDC, DPS, LED	\$710
M38DLS	12/24 VDC, DPS, LED, Senstat	\$805
M38DLST	12/24 VDC, DPS, LED, Senstat, Tamper	\$872
M38DS	12/24 VDC, DPS, Senstat	\$763
M38LS	12/24 VDC, LED, Senstat	\$710



M68 1,200 lbs. Durable Magnalocks®

ITEM	DESCRIPTION	PRICE
M68	12/24 VDC	\$716
M68D	12/24 VDC, DPS	\$810
M68DL	12/24 VDC, DPS, LED	\$851
M68DLS	12/24 VDC, DPS, LED, Senstat	\$946
M68DLST	12/24 VDC, DPS, LED, Senstat, Tamper	\$1013
M68DS	12/24 VDC, DPS, Senstat	\$903
M68LS	12/24 VDC, LED, Senstat	\$851
M68S	12/24 VDC, Senstat	\$810



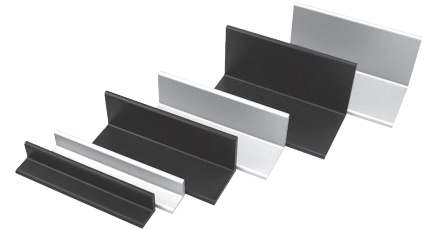
M38, M68 Accessories

ITEM	DESCRIPTION	PRICE
DC-38SP	Stainless Polished Dress Cover for M38	\$141
DC-68SP	Stainless Polished Dress Cover for M68	\$141
TJ-38CL	Clear Anodized In-Swing Door Kit for M38	\$249
TJ-68CL	Clear Anodized In-Swing Door Kit for M68	\$249

Universal Magnalock Accessories

Header Extension Brackets

MODEL	DESCRIPTION	BK	CL
HEB-1xx-8	1" x 1" x 8"	\$64	\$53
HEB-1xx-12	1" x 1" x 12"	\$75	\$58
HEB-2xx-8	2" x 2" x 8"	\$83	\$69
HEB-2xx-12	2" x 2" x 12"	\$86	\$75
HEB-3xx-8	3" x 3" x 8"	\$96	\$85
HEB-3xx-12	3" x 3" x 12"	\$107	\$90
HEB-3G	3" x 3" x 8" for Glass Door	\$102	



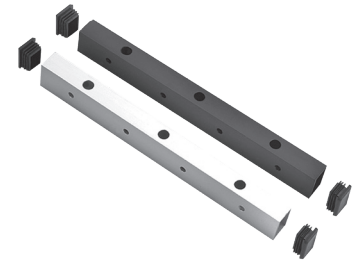
How to Order

Specify quantity and the following information. Order related products separately.

MODEL	SIZE	FINISH	SIZE
HEB	-1	BK	-8
HEB Header	1 1" x 1"	BK Black Anodized	8
Extension	2 2" x 2"	CL Clear Anodized	12
	3 3" x 3"		

Universal Header Brackets

MODEL	DESCRIPTION	BK	CL
UHB-xx-8	8" Header Bracket	\$111	\$94
UHB-xx-12	12" Header Bracket	\$154	\$135



How to Order

Specify quantity and the following information. Order related products separately.

MODEL	FINISH	SIZE
UHB	BK	-8
UHB Universal Header Extension	BK Black Anodized CL Clear Anodized	8" 12"

Stop Filler Plates

MODEL	DESCRIPTION	BK	CL
SFP-1/2-xx-8	1/2" x 1-1/4" x 8"	\$50	\$42
SFP-1/2-xx-12	1/2" x 1-1/4" x 12"	\$56	\$45
SFP-1/4-xx-8	1/4" x 1-1/4" x 8"	\$50	\$42
SFP-1/4-xx-12	1/4" x 1-1/4" x 12"	\$56	\$45
SFP-3/8-xx-8	3/8" x 1-1/4" x 8"	\$50	\$42
SFP-3/8-xx-12	3/8" x 1-1/4" x 12"	\$56	\$45
SFP-5/8-xx-8	5/8" x 1-1/4" x 8"	\$50	\$42
SFP-5/8-xx-12	5/8" x 1-1/4" x 12"	\$56	\$45



How to Order

Specify quantity and the following information. Order related products separately.

MODEL	SIZE	FINISH	SIZE
SFP	-1/2	BK	-8
SFP Stop Filler Plate	1/2" 1/4" 3/8" 5/8"	BK Black Anodized CL Clear Anodized	8" 12"

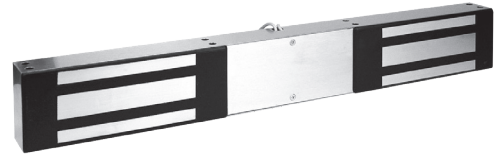
Additional Accessories

ITEM	DESCRIPTION	PRICE
AKG	Adhesive Kit for GDB permanently bonds to the glass using a special industrial adhesive	\$223
DCP-12X3	Dress Cover Plate, 12" x 3" for larger strikes	\$41
GDB	Glass Door Bracket permits strike plate installation on a solid glass door	\$87
IK	This convenient, cost effective kit contains everything an installer needs to achieve professional, high quality Magnetic Lock installations.	\$718



DM62 Double 1,200 lbs. Durable Magnalocks®

ITEM	DESCRIPTION	PRICE
DM62	12/24 VDC	\$1192
DM62-OS	12/24 VDC, Offset Strike	\$1192
DM62B	12/24 VDC, MBS	\$1453
DM62B-OS	12/24 VDC, MBS, Offset Strike	\$1453
DM62BD	12/24 VDC, MBS, DPS	\$1603
DM62D	12/24 VDC, DPS	\$1371



Accessories

ITEM	DESCRIPTION	PRICE
ASCWB-DM62CL	Alum 1-1/2" Spacer — Concrete/Wood Bracket, DM62, Clear	\$209

How to Order

Specify quantity and the following information. Order related products separately.

MODEL SERIES	MONITORING OPTIONS	STRIKE PLATE OPTIONS
DM62	BD	– OS
DM62	(blank) No Monitoring B BondSTAT Monitor D Door Position Switch	(blank) Standard Strike OS Offset Strike

M34R 500 lbs. Recessed Magnalocks®

ITEM	DESCRIPTION	PRICE
M34R	12/24 VDC, Recessed	\$500
M34RB	12/24 VDC, Recessed, MBS	\$631
M34RBD	12/24 VDC, Recessed, MBS, DPS	\$706
M34RD	12/24 VDC, Recessed, DPS	\$589



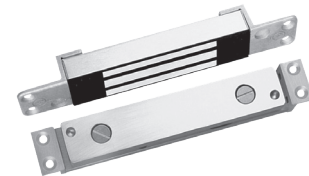
SAM 1,200 lbs. Shear Aligning Magnalocks®

ITEM	DESCRIPTION	PRICE
SAM	12/24 VDC, Shear Aligning	\$1123
SAMB	12/24 VDC, Shear Aligning, MBS	\$1225
SAMBD	12/24 VDC, Shear Aligning, MBS, DPS	\$1294
SAMD	12/24 VDC, Shear Aligning, DPS	\$1197
SAMN	12/24 VDC, Shear Aligning with Narrow Strike Plate	\$1135



SAM2-24 600 lbs. Mini Shear Magnalocks®

ITEM	DESCRIPTION	PRICE
SAM2-24	24 VDC, Shear Aligning	\$850
SAM2C-24	24 VDC, Shear Aligning, MBS	\$895



SAM Accessories

ITEM	DESCRIPTION	PRICE
SMLS	Surface Mount Housing Lock — Shear	\$213
SMSS	Surface Mount Housing Strike — Shear	\$206
SWB-03	SAM Wood Bracket — Brass Polished	\$295
SWB-10B	SAM Wood Bracket — Oil Rubbed Bronze	\$296
SWB-26D	SAM Wood Bracket — Satin Stainless	\$116

NOTE: Not for use with SAM2-24 or SAMC2-24

Cabinet Locks

MCL 180 lbs. Cabinet Magnalocks®

ITEM	DESCRIPTION	PRICE
MCL-24	24 VDC	\$289



M32-SS 600 lbs Cabinet Magnalocks®

ITEM	DESCRIPTION	PRICE
M32-SS	Standard — No Monitoring, Split Strike	\$581
M32B-SS	BondSTAT monitoring, Split Strike	\$703



Specialty Locks

GL1 Specialty Gate Locks

ITEM	DESCRIPTION	PRICE
GL1-FL	Gate Lock, 12/24 VDC, Standard Fail Locked	\$462
GL1-FLM	Gate Lock, 12/24 VDC, Fail Locked Monitored	\$478
GL1-FS*	Gate Lock, 12/24 VDC, Standard Fail Safe	\$462
GL1-FSM*	Gate Lock, 12/24 VDC, Fail Safe Monitored	\$478

*Cylinder not available for Fail-Safe Version "FS" or "FSM"

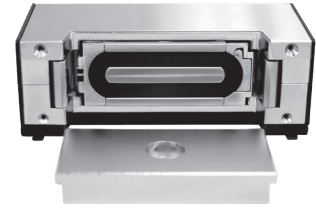
GL1 Accessories

ITEM	DESCRIPTION	PRICE
FMB9-4	Post Shim Kit for Flex Mount Brackets — (Set of 4)	\$30
FMK-SL	Flex Mount Kit for Sliding Gate	\$140
FMK-SW	Flex Mount Kit for Swinging Gate	\$174
GMC	Gate Lock Mortise Cylinder (for use with FL Models only)	\$46



MM15 Specialty Electromechanical Magnalock

ITEM	DESCRIPTION	PRICE
MM15	12/24 V, AC/DC	\$613
MM15DT	12/24 V, AC/DC, DPS, Tamper Switch	\$750
MM15G	12/24 V, AC/DC, Gate Conduit	\$682
MM15GDT	12/24 V, AC/DC, Gate Conduit, DPS, Tamper Switch	\$789



MM15 Dress Cover

MODEL	BK	BP	BS
DC-MM15	\$51	\$130	\$141

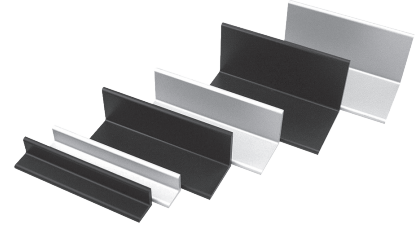


MM15 Tamper Shield

ITEM	PRICE
MM15-TS	\$51

MM15 Brackets

MODEL	DESCRIPTION	BK	CL
HEB-1xx-MM15	1" Header Extension Bracket	\$63	\$48
HEB-2xx-MM15	2" Header Extension Bracket	\$63	\$48
HEB-3xx-MM15	3" Header Extension Bracket	\$63	\$48
SFP-1/2xxMM15	1/2" Stop Filler Plate	\$54	\$42
SFP-3/8xxMM15	3/8" Stop Filler Plate	\$54	\$42
SFP-5/8xxMM15	5/8" Stop Filler Plate	\$54	\$42
Z-MM15	Z-Bracket	\$150	\$133



How to Orders Specify quantity and the following information. Order related products separately.

MODEL	SIZE	FINISH	MODEL	SIZE	FINISH
HEB	-1	BK-MM15	SFP	-1/2	BK-MM15
HEB Header Extension	1 1" x 1"	BK Black Anodized	SFP Stop Filler Plate	1/2"	BK Black Anodized
	2 2" x 2"	CL Clear Anodized		3/8"	CL Clear Anodized
	3 3" x 3"			5/8"	

Keypads & Card Readers

DK-12 Stand Alone Keypad

ITEM	DESCRIPTION	PRICE
DK-12	Digital Keypad System with Illuminated keys — Single Gang	\$226



DK-16 Keypad System

ITEM	DESCRIPTION	PRICE
DK-16	Keypad and Controller — Indoor, Single Gang	\$494
DK-16P	Keypad only — Indoor, Single Gang	\$268



DK-26 Keypad System

MODEL	DESCRIPTION	BK	SS
DK-26	Keypad and Controller — Narrow Stile	\$505	\$491
DK-26P	Keypad only — Narrow Stile	\$267	\$250



DK-37 Wiegand Keypads

MODEL	DESCRIPTION	BK	SS
DK-37W	Narrow Stile with Wiegand Output	\$277	\$258



How to Order

Specify quantity and the following information. Order related products separately.

MODEL SERIES	OUTPUT	FINISH
DK-37	W	BK
DK-37 Keypad	W Wiegand Output	BK Black Anodized SS Stainless Steel

DK-38 Wiegand Keypads

MODEL	DESCRIPTION	PRICE
DK-38W	Single Gang with Wiegand Output	\$258



DK-12, DK-16, DK-38 Keypad Accessories

ITEM	DESCRIPTION	PRICE
WBB	Wall Mounted, Weatherized, Single Gang Box	\$53
WCC	Wall Mounted, Weather Cover, Single Gang Box	\$74

R100 Aperio® Card Reader Factory Paired with Wiegand Hub

ITEM	DESCRIPTION	PRICE
R100H-IPS-B	Aperio® Wireless Card Reader Factory Paired with AH20 (1:1) Wiegand Hub, Black	\$967



Accessories

ITEM	DESCRIPTION	PRICE
R100-DPK	R100 Aperio® Wireless Card Reader Dress Cover, Aluminum	\$30

R100 Demo Mount

ITEM	DESCRIPTION	PRICE
DEMO-R100-IPS-B	R100 Aperio® Wireless Card Reader Demo Mount With HID multiCLASS SE Card Technology, HID NFC Mobile Access Enabled	\$1025

DR100 Aperio® Wireless Door Relay

ITEM	DESCRIPTION	PRICE
DR100CH-IPS	DR100 Aperio® wireless card reader with relay control and secure installation kit, HID multiCLASS SE Card Technology, HID NFC Mobile Access Enabled with Elite Key.	\$1391
DR100CEH-IPS	DR100 Aperio® wireless card reader with relay control plus built-in Heater Element and secure installation kit. HID multiCLASS SE Card Technology, HID NFC Mobile Access Enabled with Elite Key.	\$1640
DR100EH-IPS	DR100 Aperio® wireless card reader with relay control and built-in Heater Element, Factory Paired with AH20 (1:1) Wiegand Hub, Black	\$1520
DR100H-IPS	DR100 Aperio® wireless card reader with relay control Factory Paired with AH20 (1:1) Wiegand Hub, Black	\$1271



How to Order

Specify quantity and the following information. Order related products separately.

SERIES	MODEL	OPTION	CARD TECHNOLOGY
DR-100	CH	H	- IPS
DR	(Blank) Standard Model	(Blank) Field configured to work with AH20, AH30, or AH40 wireless hubs	IPS multiCLASS SE® + HID NFC mobile access enabled
	C DR100 + SIK	H Factory pre paired to work with AH20 Wiegand hub	IPEXXXXX iCLASS Elite factory configured
	EDR100 + HE		BIPSXXXXX multiCLASS SE® + HID BLE & NFC mobile access enabled

*XXXXX is a unique or customer specific key that is only reorderable for that specific company.

Push Buttons & Egress Devices

XMS Request to Exit Motion Sensor

ITEM	DESCRIPTION	PRICE
XMS	Passive Infrared Request to Exit Device	\$267

Part of a continuum of Safer2Open™ low-touch and touchless door hardware solutions from ASSA ABLOY



EEB Emergency Exit Push Buttons

ITEM	DESCRIPTION	PRICE
EEB2	Momentary, SPDT, Single Gang, Green/Red/Blue/Handicap, 30 Sec. Timer	\$162
EEB3N	Momentary, SPDT, Narrow, Green/Red, 30 Sec. Timer	\$162



Accessories

ITEM	DESCRIPTION	PRICE
PB2-LK	2" Button, Illumination Kit for PB2E, PB5E, EEB2 Series Push Button	\$34
PB3-LK	Illumination Kit, Green/Red for PB3E/EEB3N Series	\$40
WBB	Wall Mounted, Weatherized, Single Gang Box	\$53
WCC	Wall Mounted, Weather Cover, Single Gang Box	\$74

PB Exit Push Buttons

ITEM	DESCRIPTION	PRICE
PB	1 1/2" button, Illuminated, Momentary, DPST, Single Gang, Green/Red Lens	\$180
PBA	1 1/2" button, Illuminated, Alternate, DPST, Single Gang, Green/Red Lens	\$180



Accessories

ITEM	DESCRIPTION	PRICE
WBB	Wall Mounted, Weatherized, Single Gang Box	\$53
WCC	Wall Mounted, Weather Cover, Single Gang Box	\$74

PB2 Exit Push Buttons

ITEM	DESCRIPTION	PRICE
PB2	2" Button, Illuminated, Momentary, Single Gang, Green/Red/Handicap	\$115
PB22	2" Button, Illuminated, Momentary, DPDT, Single Gang, Green/Red/Handicap	\$180
PB2E	2" Button, Non-Illuminated, Momentary, Single Gang, SPDT, Green/Red/Handicap	\$84

Accessories

ITEM	DESCRIPTION	PRICE
PB2-LK	2" Button, Illumination Kit for PB2E, PB5E, EEB2 Series Push Button	\$34
WBB	Wall Mounted, Weatherized, Single Gang Box	\$53
WCC	Wall Mounted, Weather Cover, Single Gang Box	\$74



PB3 Push Buttons

ITEM	DESCRIPTION	PRICE
PB3	3/4" Rectangle Button, Illuminated, Momentary, DPST/DPDT, Single Gang, Green/Red Lens	\$123
PB3A	3/4" Rectangle Button, Illuminated, Alternate, DPST/DPDT, Single Gang, Green/Red Lens	\$123
PB3AN	3/4" Rectangle Button, Illuminated, Alternate, DPST/DPDT, Narrow, Green/Red Lens	\$123
PB3E	3/4" Rectangle Button, Non-Illuminated, Momentary, DPST/DPDT, Single Gang, Green/Red Lens	\$93
PB3EA	3/4" Rectangle Button, Non-Illuminated, Alternate, DPST/DPDT, Single Gang, Green/Red Lens	\$93
PB3EAN	3/4" Rectangle Button, Non-Illuminated, Alternate, DPST/DPDT, Narrow, Green/Red Lens	\$93
PB3EAR	3/4" Rectangle Button, Non-Illuminated, Remote, Alternate, DPST/DPDT, Surface Mount Green/Red Lens	\$93
PB3EN	3/4" Rectangle Button, Non-Illuminated, Momentary, DPST/DPDT, Narrow, Green/Red Lens	\$93
PB3ER	3/4" Rectangle Button, Non-Illuminated, Remote, Momentary, DPST/DPDT, Surface Mount Green/Red Lens	\$93
PB3N	3/4" Rectangle Button, Illuminated, Momentary, DPST/DPDT, Narrow, Green/Red Lens	\$123



Accessories

ITEM	DESCRIPTION	PRICE
PB3-LK	Illumination Kit, Green/Red for PB3E/EEB3N Series	\$40
WBB	Wall Mounted, Weatherized, Single Gang Box	\$53
WCC	Wall Mounted, Weather Cover, Single Gang Box	\$74

PB4L Push Buttons

ITEM	DESCRIPTION	PRICE
PB4L-2	1/2" Round Button, Green Illuminated Halo, Momentary, DPDT, Single Gang, Green/Red LED	\$155
PB4LA-2	1/2" Round Button, Green Illuminated Halo, Alternate, DPDT, Single Gang, Green/Red LED	\$155
PB4LAN-2	1/2" Round Button, Green Illuminated Halo, Alternate, DPDT, Narrow Stile, Green/Red LED	\$155
PB4LN-2	1/2" Round Button, Green Illuminated Halo, Momentary, DPDT, Narrow Stile, Green/Red LED	\$155



PB5 Push Buttons

ITEM	DESCRIPTION	PRICE
PB5	2" Round Button, Illuminated, Momentary, SPDT, Single Gang, Green/Red/Handicap	\$142
PB5E	2" Round Button, Non-Illuminated, Momentary, SPDT, Single Gang, Green/Red/Handicap	\$108



Accessories

ITEM	DESCRIPTION	PRICE
PB2-LK	2" Button, Illumination Kit for PB2E, PB5E, EEB2 Series Push Button	\$34
WBB	Wall Mounted, Weatherized, Single Gang Box	\$53
WCC	Wall Mounted, Weather Cover, Single Gang Box	\$74

MK Mortise Key Switches

ITEM	DESCRIPTION	PRICE
MK	Momentary, SPDT, Single Gang, Green/Red LED	\$156
MK2	Momentary, DPDT, Single Gang, Green/Red LED	\$183
MKA	Alternate, SPDT, Single Gang, Green/Red LED	\$156
MKA2	Alternate, DPDT, Single Gang, Green/Red LED	\$183
MKAN	Alternate, SPDT, Narrow, Green/Red LED	\$156
MKAN2	Alternate, DPDT, Narrow, Green/Red LED	\$183
MKN	Momentary, SPDT, Narrow, Green/Red LED	\$156
MKN2	Momentary, DPDT, Narrow, Green/Red LED	\$183
MKPZ	Momentary, SPDT, Double Gang, Green/Red LED, Audible	\$235
MKAPZ	Alternate, SPDT, Double Gang, Green/Red LED, Audible	\$235



MK Accessories

ITEM	DESCRIPTION	PRICE
MKC-KA	Mortise Cylinder for MK Series – Keyed Alike	\$95
MKC-KD	Mortise Cylinder for MK Series – Keyed Differently	\$95
MKS	Momentary, Switch Only	\$40
MKS2	DPDT Momentary, Switch Only	\$66
MKSA	Alternate, Switch Only	\$40
MKSA2	DPDT Alternate, Switch Only	\$66

KP-1 Tubular Key Switches

ITEM	DESCRIPTION	PRICE
KP1	Momentary Switch	\$197
KP1A	Alternate Switch	\$197



WSS Wave Sense® Hands-Free Activation Switch

ITEM	DESCRIPTION	PRICE
WSS-WSD	Wave Sense Switch, White Single/ Double Gang Faceplate	\$436

Part of a continuum of Safer2Open™ low-touch and touchless door hardware solutions from ASSA ABLOY

Accessories

ITEM	DESCRIPTION	PRICE
WBB	Wall Mounted, Weatherized, Single Gang Box	\$53
WCC	Wall Mounted, Weather Cover, Single Gang Box	\$74

NOTE: WBB & WCC accessories are only compatible with the WSS-WSD Single Gang Faceplate option



SP-1 Capacitive Touch Sense® Switch

ITEM	DESCRIPTION	PRICE
SP-1	Touch Sense® Switch	\$231
SP-1L	Label Touch Switch [SP-1]	\$11
SP-1LH	Label Touch Switch [SP-1] — Handicap Decal	\$11



DSB Dual Sense® Egress Bar

MODEL	DESCRIPTION	BK	CL
DSB	Non-Illuminated, 36" (Standard), 42", or 48"	\$617	\$595
DSB-xxl	Illuminated, 36" (Standard), 42", or 48"	\$818	\$792
EL-DSB	ElectroLynx, Illuminated, 36" Only	\$657	\$639



Accessories

ITEM	DESCRIPTION	PRICE
DSB-TDM	Through Door Mounting Kit for DSB	\$21
TCP-BK	Touch Bar Cover Plates — Set of 2, Black Anodized	\$107
TCP-CL	Touch Bar Cover Plates — Set of 2, Clear Anodized	\$105

How to Order Specify quantity and the following information. Order related products separately.

CONNECTOR STYLE	MODEL SERIES	FINISH	ILLUMINATION	BAR LENGTH
EL	– DSB	– CL	I	42
(blank) No Connectors	DSB Dual Sense Bar	BK Black Anodized	(blank) Non Illuminated	(blank) 36" Standard Unit
EL ElectroLynx Connectors		CL Clear Anodized	I Illuminated	42 42" Length 48 48" Length

NOTE: Not every combination above is possible. Please contact the factory if you need a combination of features not listed on this page.

TSB Touch Sense® Egress Bar

MODEL	DESCRIPTION	BK	CL
TSB	36" (Standard), 42", or 48"	\$561	\$524
TSB-xxT	Trailing Edge Timer [3 Sec.] — BK 36" only, CL 36" or 42"	\$561	\$524
EL-TSB	ElectroLynx — 36" (Standard), 42", or 48"	\$585	\$547
DTSB	Dummy with End Caps & Fasteners — 36" (Standard), 42", or 48"	\$285	\$257



Accessories

ITEM	DESCRIPTION	PRICE
TCP-BK	Touch Bar Cover Plates — Set of 2, Black Anodized	\$107
TCP-CL	Touch Bar Cover Plates — Set of 2, Clear Anodized	\$105
TSB-TDM	Through Door Mounting Kit for TSB	\$20

How to Order Specify quantity and the following information. Order related products separately.

CONNECTOR STYLE	MODEL SERIES	FINISH	SPECIAL FEATURES	BAR LENGTH
EL	– TSB	– CL	T	– 42
(blank) No Connectors	TSB Touch Sense Bar	BK Black Anodized	T Trailing Edge Timer	(blank) 36" Standard Unit
EL ElectroLynx Connectors		CL Clear Anodized		42" 48"

NOTE: Not every combination above is possible. Please contact the factory if you need a combination of features not listed on this page.

EMB Electromechanical Egress Bar

MODEL	DESCRIPTION	BK	CL
EMB	36" (Standard), 42", or 48"	\$339	\$319
WEMB	Weather Resistant, 36" (Standard), 42", or 48"	\$374	\$352



Accessories

ITEM	DESCRIPTION	PRICE
TCP-BK	Touch Bar Cover Plates — Set of 2, Black Anodized	\$107
TCP-CL	Touch Bar Cover Plates — Set of 2, Clear Anodized	\$105

How to Order Specify quantity and the following information. Order related products separately.

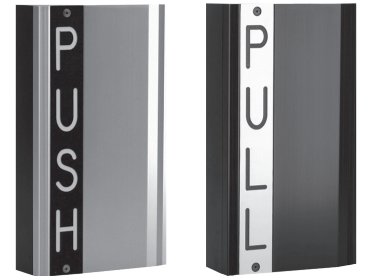
MODEL SERIES	FINISH	BAR LENGTH
EMB	– CL	– 48
EMB Electromechanical Bar	BK Black Anodized	(blank) 36" Standard Unit
WEMB Weather Resistant Electromechanical Bar	CL Clear Anodized	42" 48"

TSH Touch Sense® Handle

MODEL	DESCRIPTION	BK	CL
TSH	Push/Pull	\$550	\$540
EL-TSH	ElectroLynx — Push/Pull	\$585	\$574

How to Order Specify quantity and the following information. Order related products separately.

CONNECTOR STYLE	MODEL SERIES	FINISH
EL	– TSH	– CL
(blank) No Connectors	TSH Touch Sense Handle	BK Black Anodized
EL ElectroLynx Connectors		CL Clear Anodized

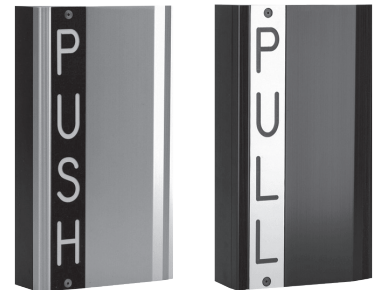


EMH Electromechanical Handle

MODEL	DESCRIPTION	BK	CL
EMH	Push/Pull	\$596	\$570
EL-EMH	ElectroLynx — Push/Pull		\$558

How to Order Specify quantity and the following information. Order related products separately.

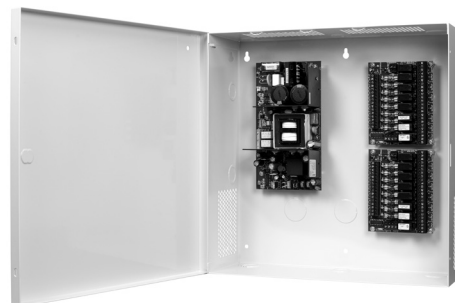
CONNECTOR STYLE	MODEL SERIES	FINISH
EL	– EMH	– CL
(blank) No Connectors	EMH Electromechanical Handle	BK Black Anodized
EL ElectroLynx Connectors		CL Clear Anodized



Power

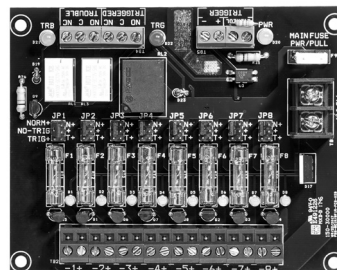
AQD Series Power Supplies with Enclosures

ITEM	DESCRIPTION	PRICE
AQD1	1 Amp, Dual Voltage Power Supply with enclosure	\$275
AQD2	2 Amp, Dual Voltage Power Supply with enclosure	\$325
AQD4	4 Amp, Dual Voltage Power Supply with enclosure	\$365
AQD6	6 Amp, Dual Voltage Power Supply with enclosure	\$405



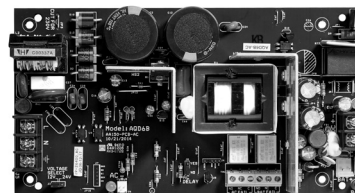
AQD Series Distribution Boards

ITEM	DESCRIPTION	PRICE
PDB-1R	Fire Trigger / Relay Interface Board	\$50
PDB-4F2	4 Glass Fused Outputs, 2 Amp each	\$50
PDB-4C2	4 PTC Outputs, 2 Amp each	\$50
PDB-8F2	8 Glass Fused Outputs, 2 Amp each	\$60
PDB-8C2	8 PTC Outputs, 2 Amp each	\$60
PDB-8F8R2	8 Glass Fused Outputs with Relays, Fire Trigger, 2 Amp each	\$145
PDB-8C8R2	8 PTC Outputs with Relays, Fire Trigger, 2 Amp each	\$145
PDB-8C1R2	8 PTC Outputs, Fire Trigger/Relay, 2 Amp each	\$120
PDB-8F1R2	8 Glass Fuse Outputs, Fire Trigger/Relay, 2 Amp each	\$120



AQD Series Power Supply Boards Only

ITEM	DESCRIPTION	PRICE
AQD1B	1 Amp, Dual Voltage Power Supply Board Only	\$155
AQD2B	2 Amp, Dual Voltage Power Supply Board Only	\$205
AQD4B	4 Amp, Dual Voltage Power Supply Board Only	\$245
AQD6B	6 Amp, Dual Voltage Power Supply Board Only	\$285



Common power supply configurations for reference:

ITEM	DESCRIPTION	PRICE
AQD1-1R	1 Amp, Dual Voltage Power Supply with enclosure, Fire Trigger	\$325
AQD1-4F2	2 Amp, Dual Voltage Power Supply with enclosure, 4 outputs, 2 Amp glass fuse	\$325
AQD2-1R	2 Amp, Dual Voltage Power Supply with enclosure, Fire Trigger	\$425
AQD2-4C2	2 Amp, Dual Voltage Power Supply with enclosure, 4 outputs, 2 Amp PTC polyswitch	\$375
AQD2-8F8R2	2 Amp, Dual Voltage Power Supply with enclosure, 8 outputs, 2 Amp glass fuse, 8 relays, Fire Trigger	\$470
AQD4	4 Amp, Dual Voltage Power Supply	\$365
AQD4-8C8R2	4 Amp, Dual Voltage Power Supply with enclosure, 8 outputs, 2 Amp PTC polyswitch, 8 relays, Fire Trigger	\$510
AQD4-8F8R2	4 Amp, Dual Voltage Power Supply with enclosure, 8 outputs, 2 Amp glass fuse, 8 relays, Fire Trigger	\$510
AQD6-8C1R2	6 Amp, Dual Voltage Power Supply with enclosure, 8 outputs, 2 Amp PTC polyswitch, 1 relay, Fire Trigger	\$525
AQD6-8C8R2	6 Amp, Dual Voltage Power Supply with enclosure, 8 outputs, 2 Amp PTC polyswitch, 8 relays, Fire Trigger	\$550
AQD6-8F8R2	6 Amp, Dual Voltage Power Supply with enclosure, 8 outputs, 2 Amp glass fuse, 8 relays, Fire Trigger	\$550

How to Order Specify quantity and the following information. Order related products separately.

MODEL SERIES	OUTPUT TYPE	OUTPUT POWER	ENCLOSURE STYLE	NUMBER OF OUTPUTS	FUSE TYPE*	NUMBER OF RELAYS	FUSE SIZE
AQ	D	6	-	8	F	8	2
AQ	D Dual Voltage	1	- In Enclosure	(blank) One Output, No Distribution Board			
		2	B Circuit Board Only	4	F Glass Fuses	8R	2 2 Amp
		4		8	C PTC Polyswitch	16R	
		6		12			
				16			

* Fuse type and size must be the same for both distribution boards for standard ordering.
For custom configurations, please contact the factory at 800.626.7590.

AQL Series Power Supplies with E1 Enclosures

ITEM	DESCRIPTION	PRICE
AQL4-E1	4 Amp at 12 VDC or 3 Amp at 24 VDC Power Supply with E1 Enclosure	\$425
AQL6-E1	6 Amp, Dual Voltage Power Supply with E1 Enclosure	\$465
AQL102-E1	10 Amp at 12 VDC, Single Voltage Power Supply with E1 Enclosure	\$495
AQL104-E1	10 Amp at 24 VDC, Single Voltage Power Supply with E1 Enclosure	\$535

AQL Series Power Supplies Boards Only

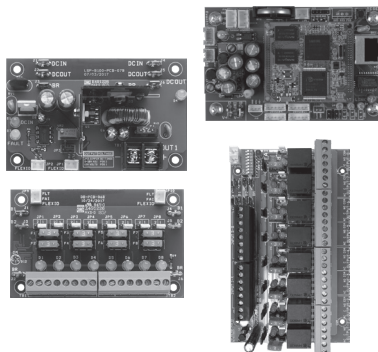
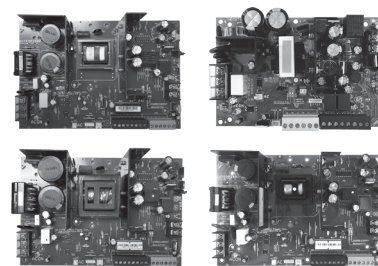
ITEM	DESCRIPTION	PRICE
AQL4	4 Amp at 12 VDC or 3 Amp at 24 VDC, Dual Voltage Power Supply Board Only	\$305
AQL6	6 Amp, Dual Voltage Power Supply Only	\$345
AQL102	10 Amp at 12 VDC, Single Voltage Power Supply Only	\$375
AQL104	10 Amp at 24 VDC, Single Voltage Power Supply Only	\$415

AQL Series Modules

ITEM	DESCRIPTION	PRICE
B100	Secondary Voltage Module	\$100
D8	3 A ATO Fused Power Distribution Module	\$70
D8P	2.5 A Polyswitch Fused Power Distribution Module	\$70
R8	Power Relay Module	\$140
NL4	The Netlink is a four data port network communication interface for remote power monitoring, reporting and control	\$525

AQL Series Common Configurations

ITEM	DESCRIPTION	PRICE
AQL4-R8E1	4 Amp at 12 VDC or 3 Amp at 24 VDC Power Supply, Power Relay Module with E1 Enclosure	\$565
AQL4-B100R8E1	4 Amp, Dual Voltage Power Supply, Secondary Voltage Module, Power Relay Module with E1 Enclosure	\$665
AQL4-B100D8NL4E1	4 Amp, Dual Voltage Power Supply, Secondary Voltage Module, Power Distribution Module with Netlink™ Network Monitoring and E1 Enclosure	\$1265
AQL6-R8E1	6 Amp, Dual Voltage Power Supply, Power Relay Module with E1 Enclosure	\$605
AQL6-B100R8E1	6 Amp, Dual Voltage Power Supply, Secondary Voltage Module, Power Relay Module with E1 Enclosure	\$705
AQL6-B100D8NL4E1	6 Amp, Dual Voltage Power Supply, Secondary Voltage Module, Power Distribution Module with Netlink™ Network Monitoring and E1 Enclosure	\$1160



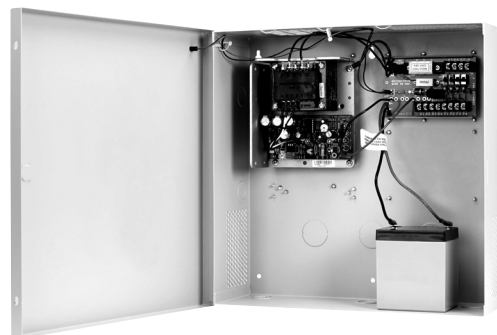
How to Order Specify quantity and the following information. Order related products separately.

POWER SUPPLY MODULE	SECONDARY VOLTAGE MODULE	DISTRIBUTION MODULE	D8 FUSE STYLE	RELAY MODULE	NETLINK MODULE	ENCLOSURE
AQL4	-B100	2D8	P	R8	NL4	E1
AQL4	(blank)	(blank)	(blank) 3 A ATM Fuse	(blank)	(blank)	(blank) Module Only
AQL6	B100	D8	P 2.5 A PTC Polyswitch	R8	NL4	E1
AQL102		2D8		2R8		
AQL104		3D8		3R8		
		4D8				
		5D8				
		6D8				

AQL4 in an E1 enclosure has six module spaces where B100, NL4 and D8/D8P each take up one module space. R8 takes up two module spaces.
 AQL6, AQL102 and AQL104 in an E1 enclosure has four module spaces where B100, NL4 and D8/D8P each take up one module space.
 R8 takes up two module spaces.

BPS Linear Power Supplies

ITEM	DESCRIPTION	PRICE
BPS-12/24-1	Dual Voltage 12/24 VDC, 1 Amp	\$489
BPS-12-1	12 VDC, 1 Amp	\$388
BPS-12-3	12 VDC, 3 Amp	\$749
BPS-12-45	12 VDC, 4.5 Amp	\$1217
BPS-12-6	12 VDC, 6 Amp	\$1348
BPS-12-15	12 VDC, 15 Amp	\$2007
BPS-24-1	24 VDC, 1 Amp	\$393
BPS-24-2	24 VDC, 2 Amp	\$749
BPS-24-3	24 VDC, 3 Amp	\$1137
BPS-24-4	24 VDC, 4 Amp	\$1348
BPS-24-6	24 VDC, 6 Amp	\$1628
BPS-24-10	24 VDC, 10 Amp	\$2007
BPSM-12-6	12 VDC, Status Monitor, 6 Amp	\$1426
BPSM-12-9	12 VDC, Status Monitor, 9 Amp	\$1708
BPSM-12-15	12 VDC, Status Monitor, 15 Amp	\$2080
BPSM-24-4	24 VDC, Status Monitor, 4 Amp	\$1426
BPSM-24-6	24 VDC, Status Monitor, 6 Amp	\$1708
BPSM-24-10	24 VDC, Status Monitor, 10 Amp	\$2080

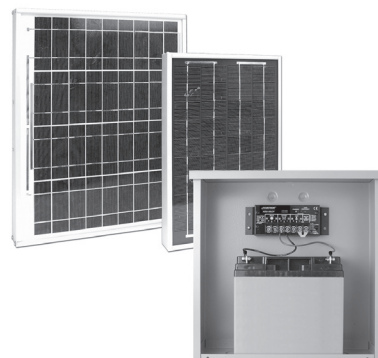


BPSS Solar Power Supplies

ITEM	DESCRIPTION	PRICE
BPSS-10	12 VDC with 10 W Solar Panel and 9 Ah Battery	\$1229
BPSS-20	12 VDC with 20 W Solar Panel and 18 Ah Battery	\$1392

BPSS Accessories

ITEM	DESCRIPTION	PRICE
B-12-9	Battery — 12 VDC, 9 Ah	\$224
B-12-18	Battery — 12 VDC, 18 Ah	\$289
PMK-3	Mounting Kit 3 in Pole for CCM Nema Enclosure	\$139
SPK	Solar Panel Kit — 20 W	\$896
SWK	High Wind Kit for 20 W Solar Panel	\$183



AQE Single-Port PoE Injector

ITEM	DESCRIPTION	PRICE
AQE30	MidSpan Injector, 2.6 Amp, Dual Voltage	\$245
AQE30E	MidSpan Extractor, 0.6 Amp	\$245



PSP Plug-In Power Supplies

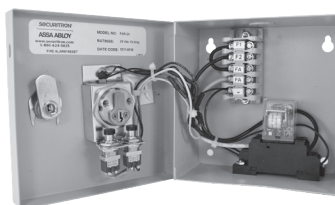
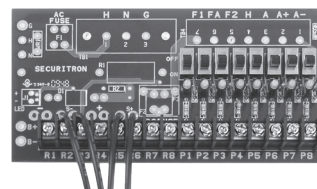
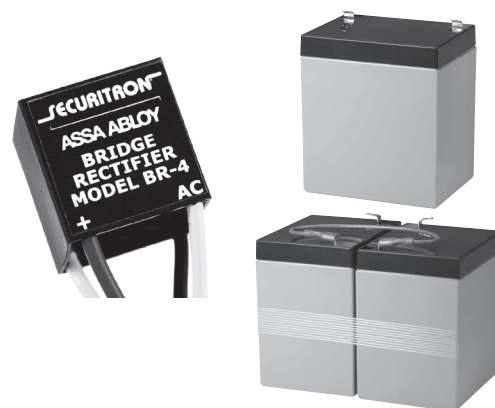
ITEM	DESCRIPTION	PRICE
PSP-12	12 VDC, 700 mA	\$77
PSP-24	24 VDC, 350 mA	\$71
PSP-12-3	12 VDC, 3 Amp	\$152
PSP-24-1.5	24 VDC, 1.5 Amp	\$152



Additional Power Products

Additional Power Products

ITEM	DESCRIPTION	PRICE
B-12-08	Battery — 12 VDC, 0.8 Amp	\$101
B-12-5	Battery — 12 VDC, 5 Amp	\$79
B-24-5	Battery — 24 VDC, 5 Amp	\$173
BR-4	Bridge Rectifier — 4 Amp	\$53
CCB-8-12	Central Control Board — 12 VDC, 8 Fused Outputs	\$182
CCB-8-24	Central Control Board — 24 VDC, 8 Fused Outputs	\$182
CFAR-12	Fire Alert Reset Control – Canada — 12 VDC, Board Only	\$99
CFAR-24	Fire Alert Reset Control – Canada — 24 VDC, Board Only	\$99
CKL	Cabinet Key Lock	\$31
FAR-12	Fire Alert Reset Control — 12 VDC	\$494
FAR-24	Fire Alert Reset Control — 24 VDC	\$494
PSM-12	Power Supply Monitor — 12 VDC	\$1121
PSM-24	Power Supply Monitor — 24 VDC	\$1121



Power Transfers

CEPT Concealed Electrical Power Transfers

MODEL	606	612	613E	630	BSP
CEPT-10	\$581	\$608	\$554	\$428	\$554
CEPT-C5E	\$633	\$663	\$607	\$479	\$607
CEPT-NW	\$581	\$608	\$554	\$428	\$554
EL-CEPT	\$670	\$702	\$644	\$513	\$644

How to Order *Specify quantity and the following information. Order related products separately.*

WIRE CONNECTORS	MODEL	NUMBER OF WIRES	FINISH
EL	- CEPT	- C5E	- 613E
(blank) No Connectors	CEPT Concealed Power Transfers	(blank) 12 Wires (EL CEPT only)	(blank) 630 Satin Stainless Steel
EL ElectroLynx® Connectors		10 10 Wires	04 US04/606 Satin Brass
		C5E 9 Wires	10 US10/612 Satin Bronze
		NW No Wires	613E Dark Oxidized Satin Bronze Powder
			BSP Black Suede Powder

NOTE: Not every combination is possible. Please contact factory if you need a combination of features not listed above.



SEPT Square-Cut Electrical Power Transfers

ITEM	DESCRIPTION	PRICE
EL-SEPT	ElectroLynx® Connectors (Compatible with 12-22AWG wires)	\$118
SEPT	Cut Standard Version	\$90
SEPT-10	10 Wire	\$128
SEPT-C5E	CAT-5E Compatible	\$122



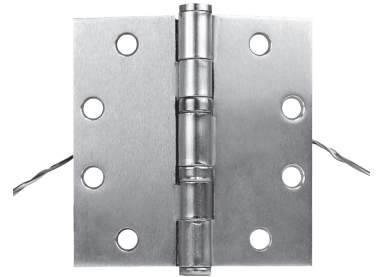
EPT Electrical Power Transfers

ITEM	DESCRIPTION	PRICE
EL-EPT	ElectroLynx® 10" Cord, Standard Swing	\$123
EL-EPT-SC	ElectroLynx® 10" Cord, Swing Clear	\$162
EL-EPTL	ElectroLynx® 18" Cord, Standard Swing	\$149
EPT	10" Cord, Standard Swing	\$80
EPT-SC	10" Cord, Swing Clear	\$120
EPTL	18" Cord, Standard Swing	\$107



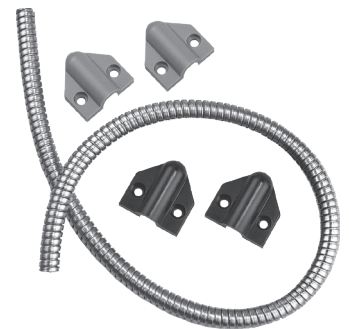
EH Electric Hinges

ITEM	DESCRIPTION	PRICE
EH-40	6 Wire [4.5" x 4.0"]	\$318
EH-45	6 Wire [4.5" x 4.5"]	\$318



TSB-C Door Cords

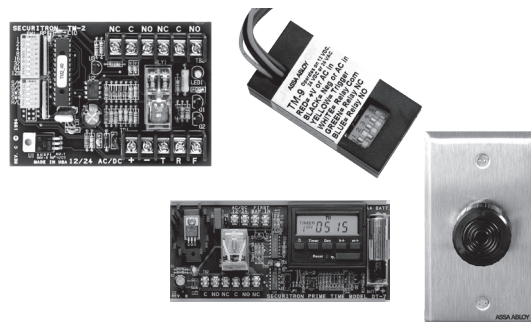
ITEM	DESCRIPTION	PRICE
TSB-C	With Caps, Gray/Black, 18"	\$42
TSB-CXL	With Caps, Gray/Black, 36"	\$51



Accessories

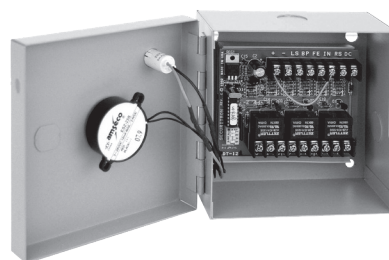
DT-7, PZ1, TM-2 and TM-9 Timers & Alarms

ITEM	DESCRIPTION	PRICE
DT-7	Digital Timer, 7 day	\$284
PZ1	Piezo on Keyplate — Single Gang	\$86
TM-2	Multi-Function Timer, 1-255 seconds	\$177
TM-9	Time Mate Timer, 2-36 Seconds	\$90



BA-DPA Drop Prop Alarm Monitoring

ITEM	DESCRIPTION	PRICE
BA-DPA-12	12 VDC with Boxed Alarm	\$310
BA-DPA-24	24 VDC With Boxed Alarm	\$310



DPS Door Position Switches

ITEM	DESCRIPTION	PRICE
DPS-M-BK	For Metal Doors, Black	\$36
DPS-M-GY	For Metal Doors, Grey	\$36
DPS-M-WH	For Metal Doors, White	\$36
DPS-W-BK	For Wood Doors, Black	\$27
DPS-W-GY	For Wood Doors, Grey	\$27
DPS-W-WH	For Wood Doors, White	\$27



Warranties

In 1999 Securitron® introduced the first no-fault, no-questions asked warranty to the industry, MagnaCare®. We believe that the best products in the industry should be supported by our commitment to deliver the highest quality products and services. This is our expectation and commitment to you – our valued customer.



**MagnaCare
Warranty**

MagnaCare Warranty

Duration: Lifetime

Condition: Any reason, including, but not limited to, installation error, vandalism or force majeure.

Replacement: Replacement product or equivalent shipped at Securitron expense via next day air freight in most cases.

Products Covered:

- Electromagnetic and Specialty Locks
- Power Supplies (excluding BPSS) and Power Transfers
- Push Buttons, Keypads, Keyswitches and Egress Devices

.....



**SecuriCare
Warranty**

SecuriCare 3-year Warranty

Duration: Three years from date of shipment

Condition: Any reason, including but not limited to, installation error, vandalism or force majeure

Replacement: Replacement product or equivalent shipped at Securitron's expense via next day air freight in most cases.

Products Covered:

- DR100 and R100 Aperio® Wireless Card Readers
- BPSS Solar Power Supplies
- GL1 Gate Lock & Accessories
- Accessories

Check your individual product to determine warranty coverage. Batteries and consumables are not covered by Securitron Warranty programs. Replacement products, at Securitron's sole option, may be the identical item or a unit which serves as a functional replacement. If the customer has an account with Securitron or a valid credit card, the customer may order an advance replacement product, whereby Securitron will charge the customer's account for the price of the product plus next day air freight, and will credit back to the customer the full amount of the charge, including outbound freight, upon Securitron's receipt of the original product from the customer. Securitron's sole and exclusive liability, and customer's sole remedy, is limited to the replacement of the Securitron product when delivered to Securitron's facility (freight and insurance charges prepaid by customer).

Securitron® Terms & Conditions

PRICES: All prices are subject to change without notice. Prices listed on the Securitron website will serve as the most current list price. All shipments will be made at prices in effect at the time of order. The customer shall be responsible for payment of all applicable sales and/or use taxes and freight costs.

MINIMUM ORDER: Minimum product charge per invoice is \$150.00 USD.

PAYMENT TERMS: Net thirty (30) days from date of invoice. Interest at the rate of up to 1-1/2% per month may be charged on all past due accounts. An order received on an account which has not been paid within 45 days of the date of invoice may not be processed until the account is current. Custom orders may require a deposit.

DELIVERY TERMS: All prices are Ex-works factory. Purchaser assumes the risk of loss or damage to the goods while in transit from the point of shipment. Securitron reserves the right to make delivery in installments. Installments shall be separately invoiced and paid for when due. Delay in delivery of an installment shall not relieve the purchaser of its obligation to accept remaining deliveries.

FREIGHT POLICY: All Purchase Orders received with a minimum net value of \$3,500 will qualify automatically for free standard freight within the continental United States. This minimum amount applies per Purchase Order to qualify and does not include free expedited freight. Qualified orders may ship partial or ship complete at your preference. Qualified orders that ship partial will not incur freight charges. All shipments that do not qualify for free freight will be charged for freight based upon our terms in effect at the time of shipment. Customers may provide their own carrier account number for expedited freight methods or for any Purchase Order to be used to cover freight costs. Minimum amounts are subject to change without notice.

SHORTAGE: Any claim for shortages must be made to Securitron in writing within one (1) week of receipt of merchandise.

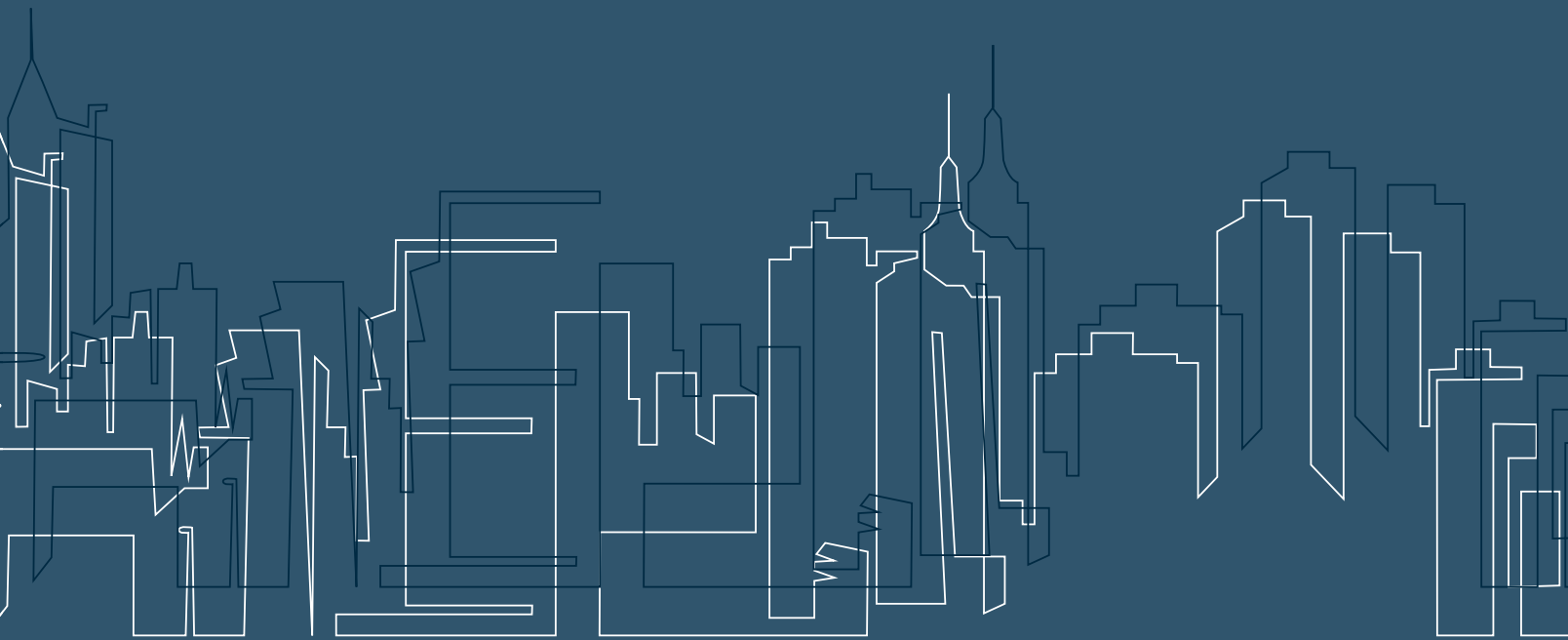
WARRANTY RETURNS: A Customer Care Form (CCF) for defective product must be obtained from Securitron before any merchandise can be returned. CCF's are valid for sixty (60) days from date of issuance. Goods returned under the terms of MagnaCare® and SecuriCare® Warranties may require a copy of the original invoice.

RETURNS: A Customer Care Form (CCF) must be obtained from Securitron before any merchandise can be returned. CCF's are valid for sixty (60) days from date of issuance. Items that are not factory sealed, or that are returned later than 90 days from the date of receipt are subject to a restocking charge plus an additional charge for any damage.

CANCELLATIONS: Any order may be subject to a 5% cancellation charge for catalog items. Cancellation of non-catalog or custom items will be subject to a 20% cancellation charge plus all costs (both direct and indirect) incurred by manufacturing at the point of cancellation that are properly allocated to the cancelled item(s).

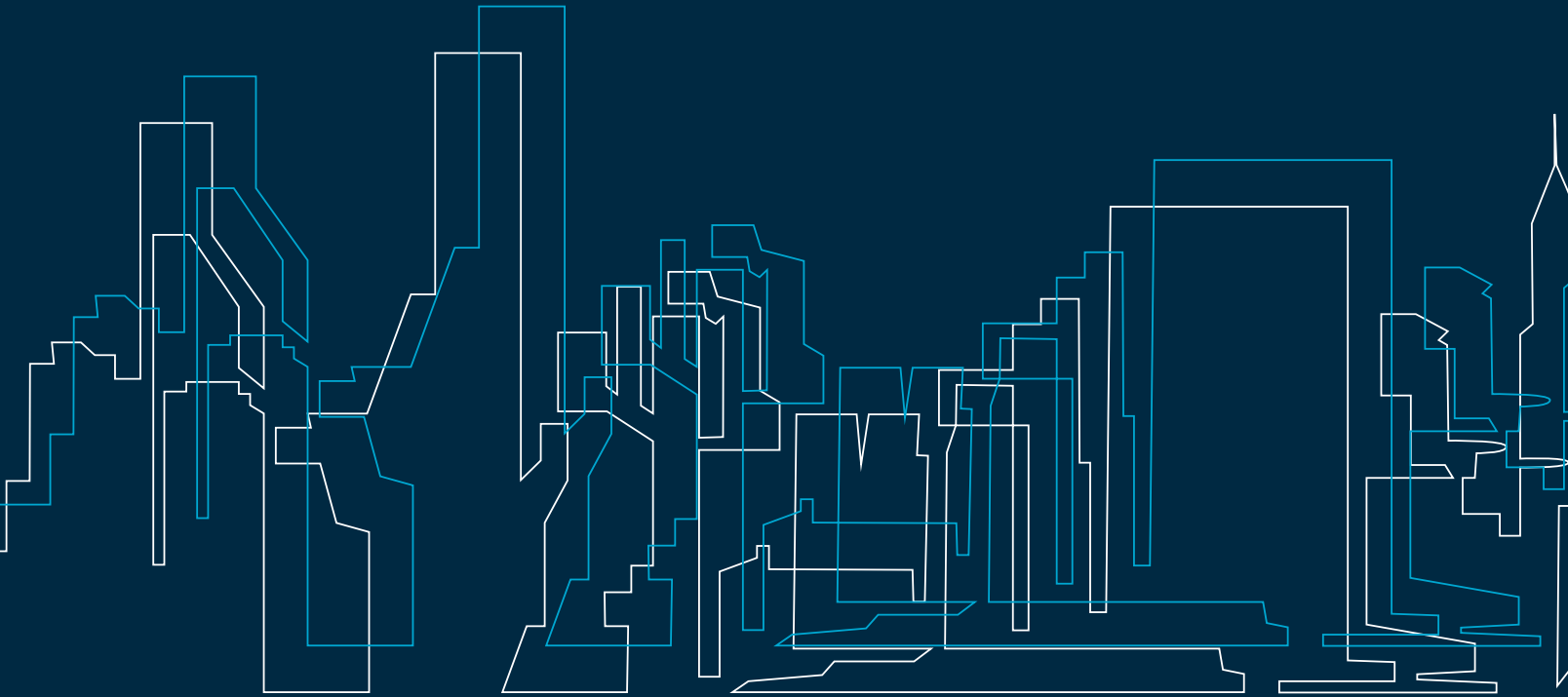
LIMITATION OF LIABILITY: Neither party will be liable to the other for any delay or failure in performance arising directly out of war, sabotage, insurrection, riot, and any other act of civil disobedience, act of public enemy, fire, explosion, flood, storm, or other act of God or nature, or similar cause beyond its reasonable control, including shortage or unavailability of labor or materials. If, notwithstanding the foregoing limitations, Securitron has any liability to the purchaser, the purchaser agrees that the total liability to the purchaser for all losses, damages, and causes of action, whether in contract, equity, tort (including without limitation, negligence and gross negligence), or otherwise, will not exceed the amount the purchaser paid to Securitron for the products (including, without limitation, incidental or consequential damages, damages for lost profits or business interruption, and punitive damages).

NO THIRD PARTY LIABILITY If the purchaser uses the Securitron Products on behalf of others or provides to others any products referenced herein, the Securitron Parties shall have no liability to such persons whatsoever, and the purchaser agree to defend and indemnify the Securitron Parties from any and all claims and demands asserted against them, and from any legal fees, costs and other expenses that the Securitron Parties incur therewith.



The ASSA ABLOY Group is the global leader in access solutions. Every day we help people feel safe, secure and experience a more open world.

SECURITRON
ASSA ABLOY



USA

800 626 7590 | f. 866 582 4641 | securitron.com
customerservice.securitron@assaabloy.com
techsupport.securitron@assaabloy.com
orders.securitron@assaabloy.com

CANADA

800 461 3007 | f. 800 461 8989 | assaabloydss.ca
sales.dss.ca@assaabloy.com
orders.dss.ca@assaabloy.com

Printed in the U.S.

Patent pending and/or patent www.assaabloydss.com/patents

Copyright © 2023, Hanchett Entry Systems, Inc., an ASSA ABLOY Group company.
All rights reserved. Reproduction in whole or in part without the express written permission of Hanchett Entry Systems, Inc. is prohibited. SEC-110-0323