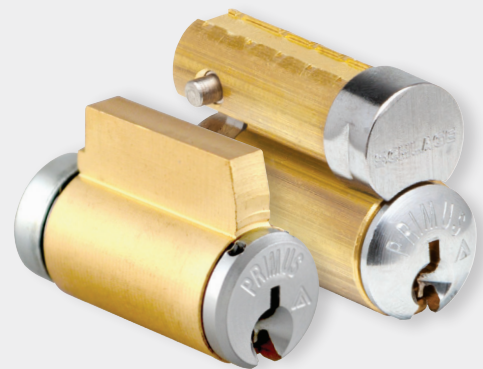




Everest 29™ SL Primus® XP

7-pin full size cylinders



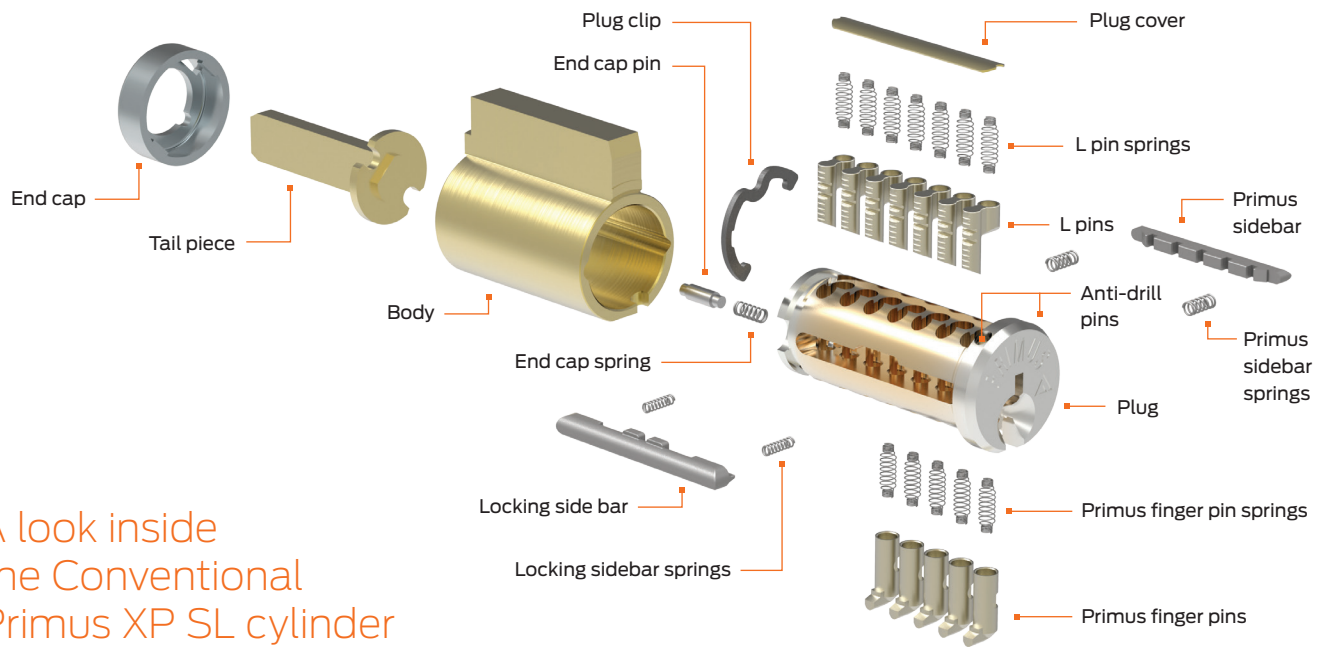
Building a Schlage layered security key system with SL

The Everest 29™ SL cylinder begins as a more physically secure cylinder design owing to the addition of a side bar mechanism that works independently from the normal Everest 29 check pin design making bypass more difficult. In any Schlage compatible Conventional or Full Size Interchangeable Core (FSIC) cylinder application, you can improve security by simply replacing cylinders with SL utilizing the restricted R keyway. For those entrances where yet higher security is required, apply Primus XP SL cylinders to add an increased layer of physical security and gain Schlage's highest levels of administrative control through geographically exclusive cylinders and side bit milled keys. Even if your building or campus has multiple cylinder formats that include SFIC cylinders, you can control it all with one key system and build security that fits your needs.

Building owners can now enhance the security of their system by using Everest 29 SL with Primus XP



A look inside the Conventional Primus XP SL cylinder



Benefits

- Allows one Everest 29 R key system to span three unique cylinder formats: Conventional, FSIC, and SFIC.
- 7-pin design offers four times more keying combinations in a master key system than 6-pin cylinders
- Enables Primus XP exclusivity and physical security features to be introduced into an SFIC based facility
- Locking side bar mechanism improves pick and bump resistance
- Key duplication on standard (basic) key cutting equipment
- SL cylinders fit all Schlage and Falcon® cylindrical locks
- Backward compatible to Everest B keyway families
- Fits an extensive list of competitor's locks

Additional security gained with Primus® XP

	Everest 29 SL	Everest 29 SL Primus XP
Patented until 2029	■	■
Check pin and single side bar	■	—
Utilizes 2 independent sidebars	—	■
Maximum key duplication restrictions	—	■
Uses pin kit # 40-247	■	■
Levels 7-9 geographic exclusivity	—	■
Electronic validation available	■	■

Finish options

	Bright brass (605)	Satin brass (606)	Antique brass (609)	Satin bronze (612)	Oil rubbed bronze (613)	Satin nickel (619)	Matte black (622)	Bright chrome (625)	Satin chrome (626)	Bright stainless steel (629)	Satin stainless steel (630)	Aged bronze (643e)
Color												
Plug face	—	■	—	—	—	—	■	—	■	—	—	■
Mortise and RIM housings		■	■	■	■	■	■	■	■	■	■	■

Allegion, the Allegion logo, Everest 29, Primus, Schlage, and the Schlage logo are trademarks of Allegion plc, its subsidiaries and/or affiliates in the United States and other countries. All other trademarks are the property of their respective owners.

About Allegion

Allegion (NYSE: ALLE) is a global pioneer in safety and security, with leading brands like CISA®, Interflex®, LCN®, Schlage®, SimonsVoss® and Von Duprin®. Focusing on security around the door and adjacent areas, Allegion produces a range of solutions for homes, businesses, schools and other institutions. Allegion is a \$2 billion company, with products sold in almost 130 countries. For more, visit www.allegion.com.

KRYPTONITE ■ LCN ■  ■ STEELCRAFT ■ VON DUPRIN



© 2018 Allegion
011159, Rev. 06/18
www.allegion.com/us