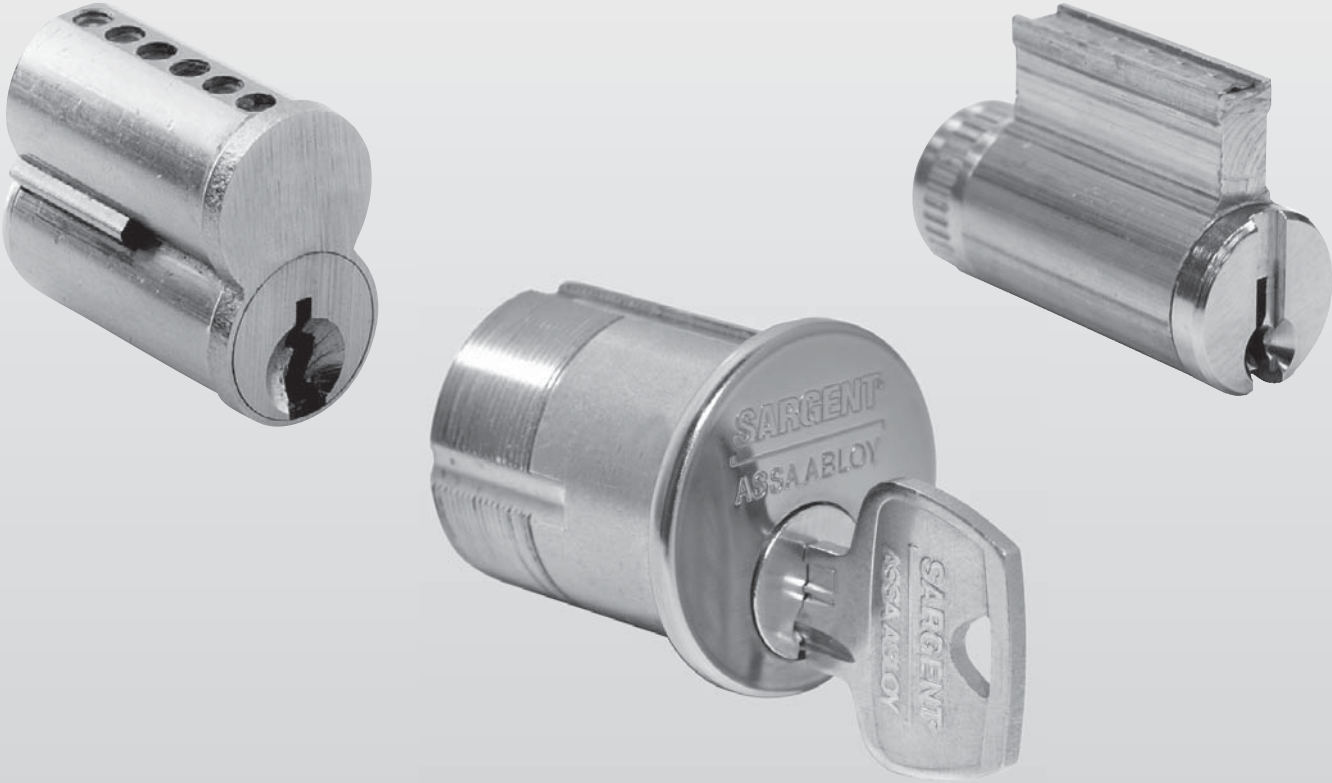


Cylinders & Components



7300B Small Format Interchangeable Cores

Cylinders and Components

73- & 73-7P Series Small Format Interchangeable Core Cylinders 6 & 7 Pin

- SARGENT Interchangeable Core Cylinders and Master Key Systems are available for a quick change of cylinders for increased security. It is not necessary to remove the lock from the door to rekey the opening
 - SARGENT 7300B Interchangeable Cores are available in SARGENT 4A and 4B keyways as well as the following standard competitor keyways: A, B, C, D, E, F, G, H, J, K, L, M. SARGENT will extend any key system after receipt of an existing bitting list from the end user
 - New key systems are available in either 4A or 4B keyways. 4A in a 2 step system will be supplied standard on new systems
 - A2 or A4 systems available
- For hardware to be supplied with keyed cores use 73- prefix for 6 pin cores and 73-7P for 7 pin permanent cores provided

7300B Keyed Interchangeable Core

- Supplied keyed with two nickel silver change keys as standard
- Face includes SARGENT logo
- If Control keys are required order as 6282BCTL for 6 pin systems or 7282BCTL for 7 pin systems
 - 6 pin system master keys are ordered as 6282BMK
 - 7 pin system master keys are ordered as 7282BMK
- Finishes: 4, 15
- Order separately as:
 - 7300B x Finish (for 6 pin)
 - 7P-7300B x Finish (for 7 pin)

65-7300B Uncombined Interchangeable Cores

- Cores for field keying
- No pins, springs or key blanks provided
- No logo on face
- 65- Prefix — uncombined Cores
- Finishes: 4, 15
- Order as:
 - 65-7300B x Finish (for 6 pin)
 - 65-7P-7300B x Finish (for 7 pin)



65-7300B Shown

70- Prefix Disposable Plastic Construction Core For SFIC

- Used for doors that do not require key locking during the construction period
- Operate with coin or flat screw driver
- Mortise and rim cylinders accepts either 6 or 7 pin permanent cores. Cylindrical lock sets ships with plastic core and 6 pin tail piece installed while the 7 pin tail piece is packed loose with the lock set
- One piece design allows for easy installation
- Only available with standard cams
- To order separately use p/n 13-5176



72- Prefix Brass Interchangeable Construction Core

- SARGENT 7200 Interchangeable 6 pin brass construction core (order 72-prefix with your SARGENT products) enables doors to be locked during the project construction period. Hardware prepared to accept 6 or 7 pin cores installed at job completion
- Using 7200 cores prevents keys for the permanent key system from becoming available during the construction process
- After construction is completed, the 7200 brass cores are removed and replaced with 7300 keyed-permanent interchangeable cores. Mortise and rim cylinders accept either 6 or 7 pin permanent cores. Key in lever locks ship with 6 pin tail installed and 7 pin tail piece shipped loose for use with 7 pin cores
- Plug face is blue for easy identification
- A special Construction Control key 6254 B CTL releases the locking sleeve of the construction core and allows for immediate removal of the core
- Construction cores are 6 pin and keyed alike construction master 6282 B CMK
- Six (6) change keys and one (1) Control key is included
- Cores shipped with hardware
- Only available with standard cams
- For keyed temp core sold separately use catalog # 7200

Key Blanks/Cut Master Type Keys (Nickel Silver)

- 6 pin key blank — order as 6285B x keyway
- 7 pin key blank — order as 7285 B x keyway
- Packed 50 per box
- SARGENT Keyways: 4A, Restricted 4B Competitors: A, B, C, D, E, F, G, H, J, K, L, M
- Cut 6 pin master key, order as cat #6282BMK
- Cut 7 pin master key, order as cat. # 7282BMK
- Cut 6 pin control key order as cat. # 6282BCTL
- Cut 7 pin control key order as cat. # 7282BCTL

73-34 Rim Cylinder

- Brass cylinder and housing
- Furnished with No. 97 rosette, break off screws and back plate
- Optional Collars/Spacers available and ordered separately, refer to product catalogs for additional information
- Housing accepts 6 or 7 pin core
- Mounting holes located to match SARGENT hardware
- Finishes: 3, 4, 26, 26D



73-43 or 73-46 Series Mortise Cylinders

- Two cylinder sizes
- #43, 1-3/8" (35mm) length under cylinder head including cam
 - 73-43 (6 pin)
 - 73-7P-43 (7 pin), 70-43 housing less core
- #46, 1-3/4" (44mm) length under cylinder head including cam
 - 73-46 (6 pin), 73-7P-46 (7 pin)
 - 70-46 housing less core
- 1-5/32" (29mm) diameter housing
- Furnished with No. 97 cylinder rosette as standard
- Optional Collars/Spacers available and ordered separately, refer to product catalogs for additional information
- Cam is permanently staked to housing
- Housing accepts 6 or 7 pin cores
- Only available with SARGENT off set cam
- Hotel Function not available
- Finishes: 3, 4, 9, 10, 10BE, 10BL, 20D, 26, 26D, BSP

