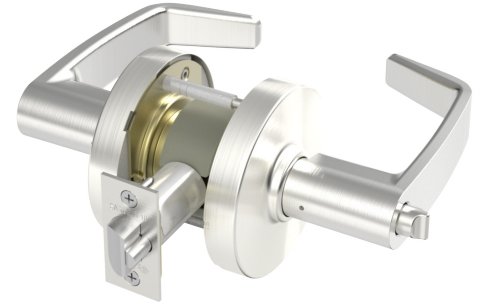


# 10X Line Bored Lock Product Bulletin

12209

## SARGENT Introduces New Premium Bored Lock: 10X Line

SARGENT is pleased to introduce the 10X Line bored lock. Manufactured of the highest-quality materials to provide durability, strength, and reliability in the most demanding, high-traffic spaces, the highly anticipated premium bored lock is certified to surpass ANSI/BHMA requirements in some of the most challenging environments and offers superior vandalism resistance.



### The 10X Line outperforms ANSI/BHMA A156.2 testing:

- Withstands 3100 in-lbs of torque (2.6x requirement) while maintaining egress
- Prevents entry against 1,600 lbs. offset lever pull (8x requirement)
- Prevents entry against 100 vertical impacts (20x requirement)
- Maintains latch retraction under 100 lb. preload (2x requirement), ensuring consistent operation in warped doors or doors with latch bind

### Key Features of the 10X Line include:

- Available in 26 mechanical functions
- 14 finishes and Microshield® options
- Lockbody design supports all cylinder formats – from fixed to interchangeable core
- Patent pending push turn button that adjusts to accommodate multiple door thicknesses

### How to Order

Quantity	Series/ Function	Trim	Finish	Hand
10	10XG04	LL	26D	RHR

Orders will be accepted immediately with standard lead times. Refer to the 10X Line catalog, parts manual and pricing pages for details.

For additional information, contact your ASSA ABLOY Door Security Solutions sales consultant, call SARGENT at 800-727-5477 or visit [www.sargentlock.com](http://www.sargentlock.com).