

SABL QUICK START GUIDE

1. PRODUCT OVERVIEW

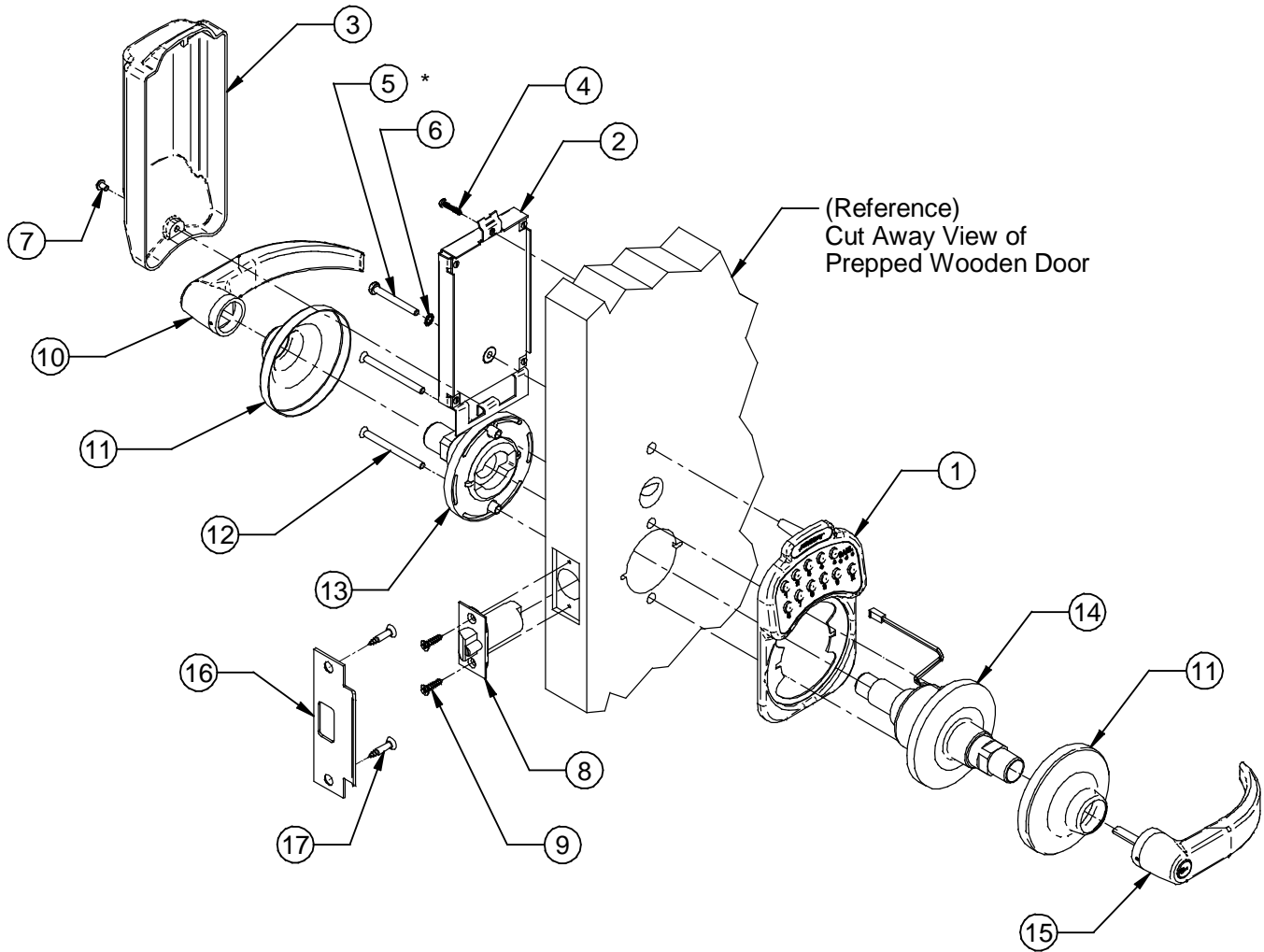


Figure 1
(Exploded View of Lock Installation)

Securitron SABL Parts List		
ITEM	QTY	NOMENCLATURE/DESCRIPTION
1	1	SABL Faceplate with Keypad
2	1	SABL Battery and Electronics Chassis
3	1	SABL Battery Access Cover
4	1	#6 X 3/4" Long (Phillips) Pan Head Screw
*5	1 (Each)	10-32 UNF X 1-3/4", 2", 2-1/4" & 2-1/2" Long (Phillips) Pan Head Screw
6	1	Lock Washer for 10-32 Screw
7	1	8-32 UNC X 1/4" Long Hex Socket Pan Head Screw

* Four (4) screw lengths are provided for use on different door thickness applications (See Section 5.2.2. in the Installation and Operating Instructions).

Yale Cylindrical Lever Handle Lockset Parts List		
ITEM	QTY	NOMENCLATURE/DESCRIPTION
8	1	Beveled Latch Assembly
9	2	#8-8-32 (Combo) X 3/4" Long (Phillips) Flat Head Screw
10	1	Inside Lever Handle
11	2	Rose Scalp
12	2	10-32 UNF X 2-1/2" Long (Phillips) Flat Head Screw
13	1	Inside Rose Assembly
14	1	Outside Rose Assembly and Lock Body
15	1	Outside Lever Handle
16	1	Strike Plate
17	2	#12-12-24 (Combo) X 1" Long (Phillips) Flat Head Screw

2. RECOMMENDED TOOLS

1/4" Slotted and #2 Phillips Screwdrivers
 Drill Motor
 Drill bits: 7/64", 1/8", 5/16", 11/32" and 3/8"

Router (Optional) with 5/32" Diameter Bit
 Hole Saw Bits: 1", 2-1/8"
 Hex (Allen) Wrenches: 3/32" (Provided) & 1/8"
 Needle-nose Pliers

3. INSTALLATION

3.1. Door Preparation

Prepare the door as shown in **Figure 2** using the Template provided.

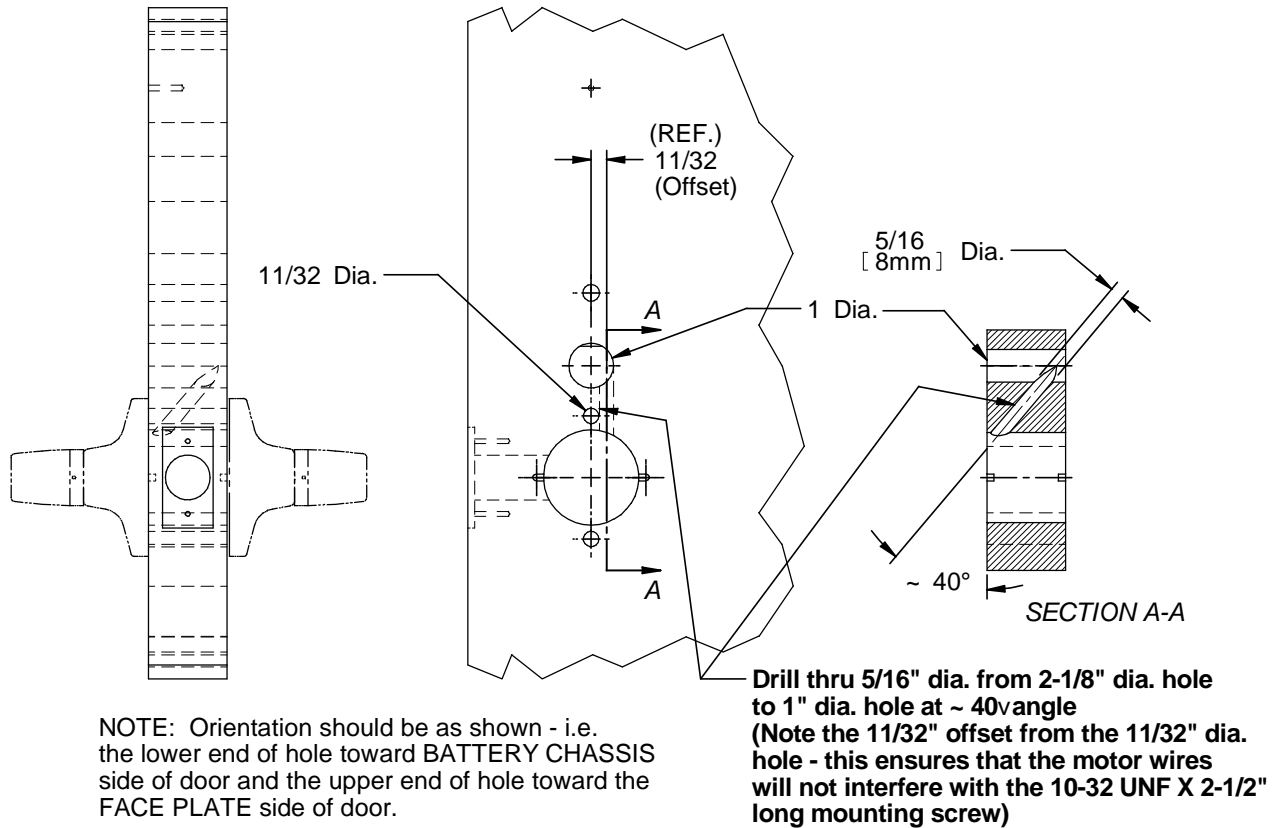


Figure 2

3.1.1. Installation of SABL into Door

1. Ensure door has been prepared as described in the Installation Instructions.
2. Unpack the SABL from its packaging box.
3. Unpack and disassemble the lockset.

Note: The lockset as provided is pre-adjusted for a 1-3/4" [44mm] thick door. For detailed instructions on door thickness adjustment please refer to the Installation and Operating Instructions:

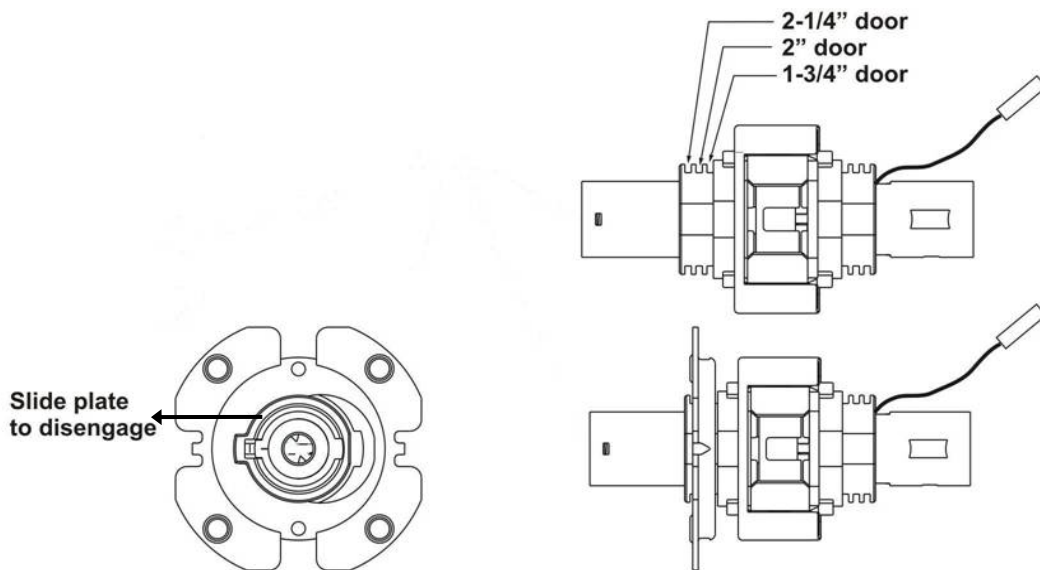


Figure 3

4. Loosely mount the latch assembly (latchbolt) using the supplied screws.
5. While holding the SABL keypad, insert the end of the outside lockset assembly through the lockset opening.
6. Feed the lockset power wires through the diagonal hole and the ribbon cable through the 1" hole to the battery side of the door.
7. Position the battery and electronics chassis opposite of the keypad and mount via supplied screws through the door and into the outside keypad.
8. Connect the lockset power wires and keypad ribbon cable to the PCB in the electronics chassis.
9. Insert the inside lockset assembly onto the lock body and fasten with supplied screws (do not overtighten). Mount the inside rose scalp and handle then tighten all screws to complete installation.

Note: You must remove the battery tab located at the top between the battery and terminal (The unit will beep once to indicate power up). You are ready for programming the unit.

4. PROGRAMMING

Decide how you want the unit to be used. The programming questions to ask are: do you want a **"fixed"** code that will either never be changed or changed only rarely? Or do you want to make **regular code changes from the keypad**? This issue depends on the amount of security called for in the application. Finally, do you want **multiple codes**? The SABL supports 55 user codes.

4.1. Fixed Programming

With power applied to the unit, press the Hard Code button for about one second and then release. The yellow LED will start flashing slowly. At this point enter in the desired code and wait for the red LED to flash twice confirming your code. After all LEDs are off you may try your code and the door should open. Should you ever want **to change the code**, just press the Hard Code button on the CPU board again and repeat the procedure described above.

Below is a step by step summary.

- *Press the "HARD" button on the CPU board for one second.*
- *Confirm slow flashing yellow LED.*
- *Within 30 seconds of pressing Hard Code button, enter a 2-7 digit code.*
- *End your entry with "E" key or wait 5 seconds.*
- *Note two (2) red LED flashes for confirmation.*
- *Re-enter code (door should open).*

4.2. Keypad Changeable Programming

With power applied to the unit, press the button marked "PRGM" on the CPU board for about one second. Note the yellow LED flashing rapidly (about three times a second). Within 30 seconds, enter the **prefix 0-0** and then **your Program Code** from **five to seven digits**. Do not pause while you're entering all these digits **as any time there is more than a five second gap between keys being pressed, the unit will stop reading the sequence**. When you have completed entering your Program Code, wait for the unit to display **two (2) pulses within a second**. If you have selected a seven digit code, the two red flashes will occur immediately as the digit limit has been reached. If you get a **single one second long red pulse**, your code has not been accepted. Refer to Troubleshooting in the Installation and Operating Instructions.

After the two confirming red flashes are seen, the unit returns to program mode (rapid yellow flash). Immediately enter the **prefix 0-1** and then **your user code** from **two to seven digits**. When you see the two confirming red flashes, exit program mode by hitting the "E" key or waiting 30 seconds. If you get the single "error" pulse, note that the unit will automatically return to program mode and you can attempt to re-enter your user code. If you continuously get the error signal, refer to the troubleshooting section in the Installation and Operating Instructions.

Below is a step by step summary of programming the two codes.

- Press the "PRGM" button on the CPU board for one second.
- Confirm rapid flashing yellow LED.
- Within 30 seconds of pressing PRGM button, enter prefix 0-0 followed immediately by a 5-7 digit Program Code.
- Note two (2) red LED flashes for confirmation (may take up to 5 seconds), note rapid yellow flashing LED returns.
- Enter prefix 0-1 followed immediately by a 2-7 digit User code. Prefixes are 01-55
- Note two (2) red LED flashes for confirmation (may take up to 5 seconds), note rapid yellow flashing LED returns.
- Press "E" key to terminate program mode or wait 30 seconds.
- Re-enter User code (door should open).
- Re-enter Program Code followed by the "E" key (yellow LED should rapidly flash); terminate with "E" key.

4.2.1. Changing The User and Program Code from the Keypad

This is the day to day procedure that should be **taught to the end user**. To change the User code:

- Enter Program Code, followed by the "E" key, note rapid yellow flashing LED (program mode).
- Enter prefix (01 thru 55) followed immediately by a new 2-7 digit User code.
- Note two red LED flashes for confirmation, note rapid yellow flashing LED returns.
- Press "E" key to terminate program mode or wait 30 seconds.
- Re-enter new User code (door should open).

The Program Code should need changing much less often. To do it:

- Enter old Program Code followed by the "E" key, note rapid yellow flashing LED (program mode).
- Enter prefix 0-0 followed immediately by a 5-7 digit new Program Code.
- End your entry with "E" key or wait 5 seconds.
- Note two red LED flashes for confirmation, note rapid yellow flashing LED returns.
- Press "E" key to terminate program mode or wait 30 seconds.
- Re-enter new Program Code followed by the "E" key (to test it), note rapid yellow flashing LED returns.
- Press "E" key to terminate program mode or wait 30 seconds.

5. COMMAND SUMMARY

WITH THE UNIT IN PROGRAM MODE (FAST YELLOW FLASH):

00 followed by 5-7 digits sets Program code.

01 followed by 2-7 digits set first User code.

02 followed by 2-7 digits sets second User code.

Additional User codes can be set up to the prefix 55 (total 59 User codes).

56-57 followed by 2-7 digits sets Passage Mode.

58-59 followed by 2-7 digits sets Lockout Mode.

71 will silence beeper at all times.

72 will return beeper to factory set.

73 will reverse light logic (red to echo, green to show door is open).

74 will return light logic to normal.

79 is alternate code delete. Any valid code entered directly after the 79 command will be deleted.

88 will erase all user codes (not Program or Hard Code).

89 will return all functions (including timer) to factory set. Codes are unchanged.

Pressing 9 when in program mode sets the timer. Two digit codes must be entered from 01 to 09 seconds. Default is 3 seconds.