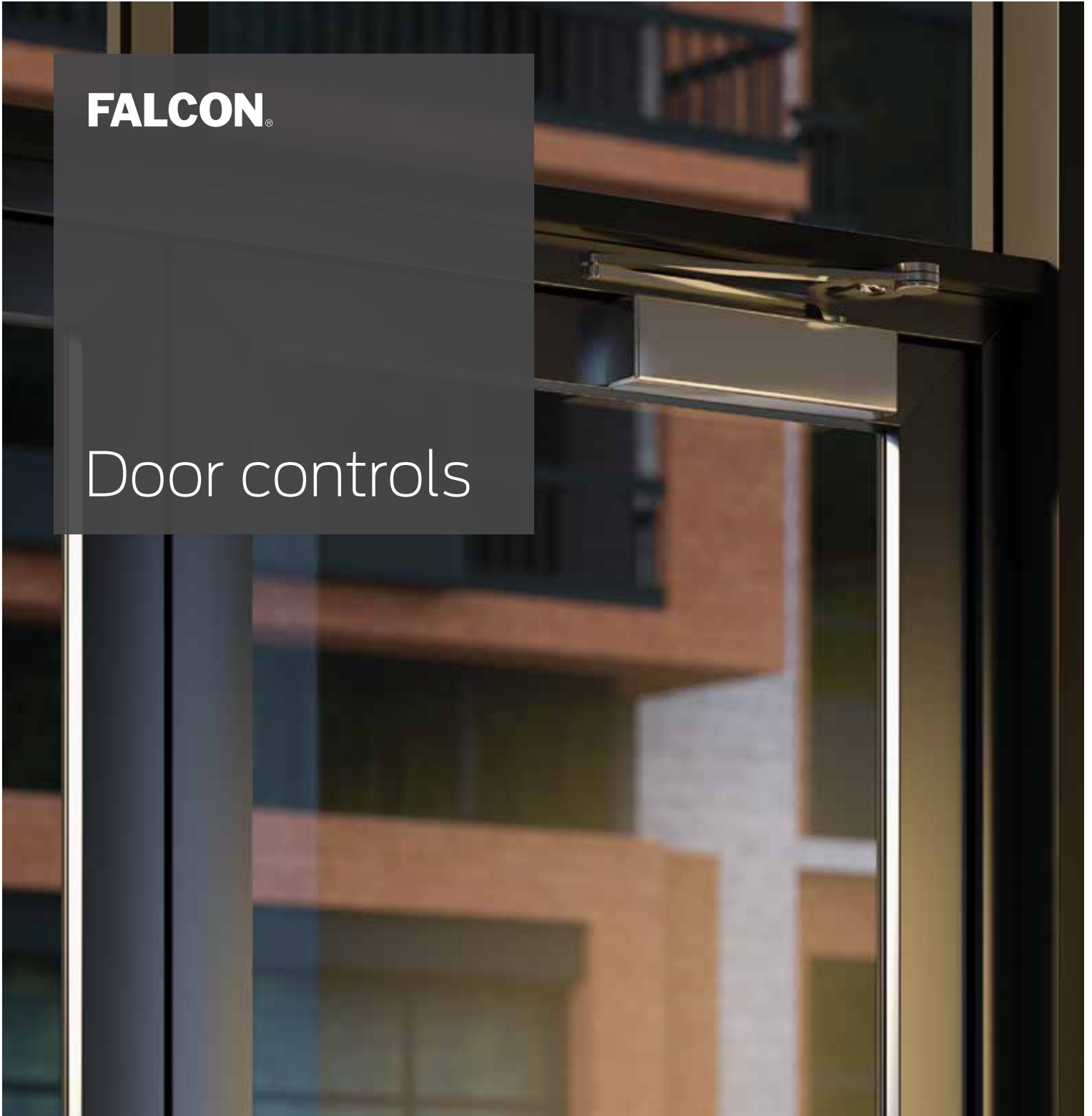


FALCON®

Door controls



OHC100 Series



Overhead concealed closers control door opening and closing, while providing an aesthetically pleasing design option for both interior and exterior use. The Falcon OHC100 Series is used with aluminum doors and frames, providing years of maintenance-free performance.

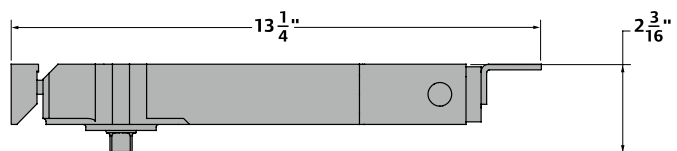
Standard features

- Economical option for overhead concealed closer
- Retrofittable, matches Jackson hole pattern
- Cast iron construction ensures lasting durability
- Fits inside standard aluminum frame header for improved aesthetics and increased security.
- 90° and 105° standard opening with optional hold-open
- Multiple size options available:
 - OHC 101 adjustable sizes 1-3
 - OHC 100 adjustable sizes 3-5
- Meets UL228
- 5 - year warranty

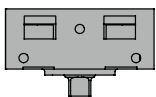
Top view



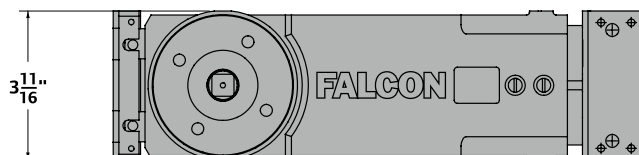
Side view



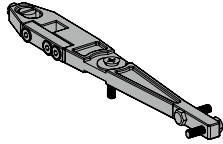
End view



Bottom view

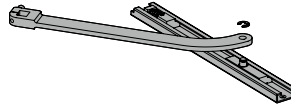


Installation accessories



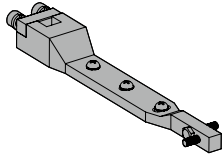
**"S" arm, OHC100-SL,
OHC100A-SL**

Non-handed arm, side load,
center hung, steel forge.



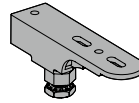
**"VO" arm, OHC100-VO,
OHC100A-VO**

Non-handed arm, offset arm w/
slide channel, steel forge.



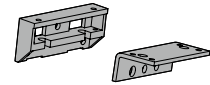
"A" arm, OHC100-EL, OHC100A-EL

Non-handed arm, end load, center
hung, steel forge.



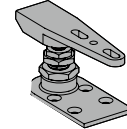
**"GE" pivots, OHC100-GE,
OHC100A-GE**

Non-handed, adjustable height,
center hung, used with side load
arm.



"AFK" mounting brackets, OHC100-AFK

Provides anchorage for adjustable size
cylinder to the door frame.



**"DP" pivots, OHC100-DP,
OHC100A-DP**

Non-handed, adjustable height,
center hung, used with end load
arm.

Cylinder options

Standard cylinder (STD) – Standard cylinder provides a main speed function to control the motion of the door from maximum opening angle until the door is a few inches from the latch where latch function controls the final closing motion. The opening swing is controlled by the hydraulic backcheck function from about 70° to maximum opening angle.

Delayed action cylinder (DEL) – Special cylinder provides a separate adjustable delayed closing motion from maximum opening angle to approximately 70°. Then the main speed function controls the door motion until the door is a few inches from the latch where latch function controls the final closing motion. During the opening swing the door is controlled by the hydraulic backcheck function from about 70° to maximum opening angle.

Competitive cross reference

Surface closer cross reference

Falcon	SC60A	SC70A	SC80A	SC90A
Norton	*1600BC	*7500/ 7700	*8500	1700BC
Hager	*5300	5100	*5200	5400
Stanley	*D-1650	D-4550	D-3550	
Yale	*50/ 51BC/ 1100	*4400	3300/ *3500	5100BC
Sargent	*1130	280/350	*1330	
Corbin		DC8000	DC3000	
Dorma	7400	8900	*8600	7300/ 7200

* identical footprint to listed Falcon closer.

Concealed closer cross reference

Falcon	OHC100 Series
Dorma	RTS88
Global	TC7000
International	Series 200, Series 300, Series 500
Jackson	20-330
Kawneer	Husky II
Sentinel	30 Series