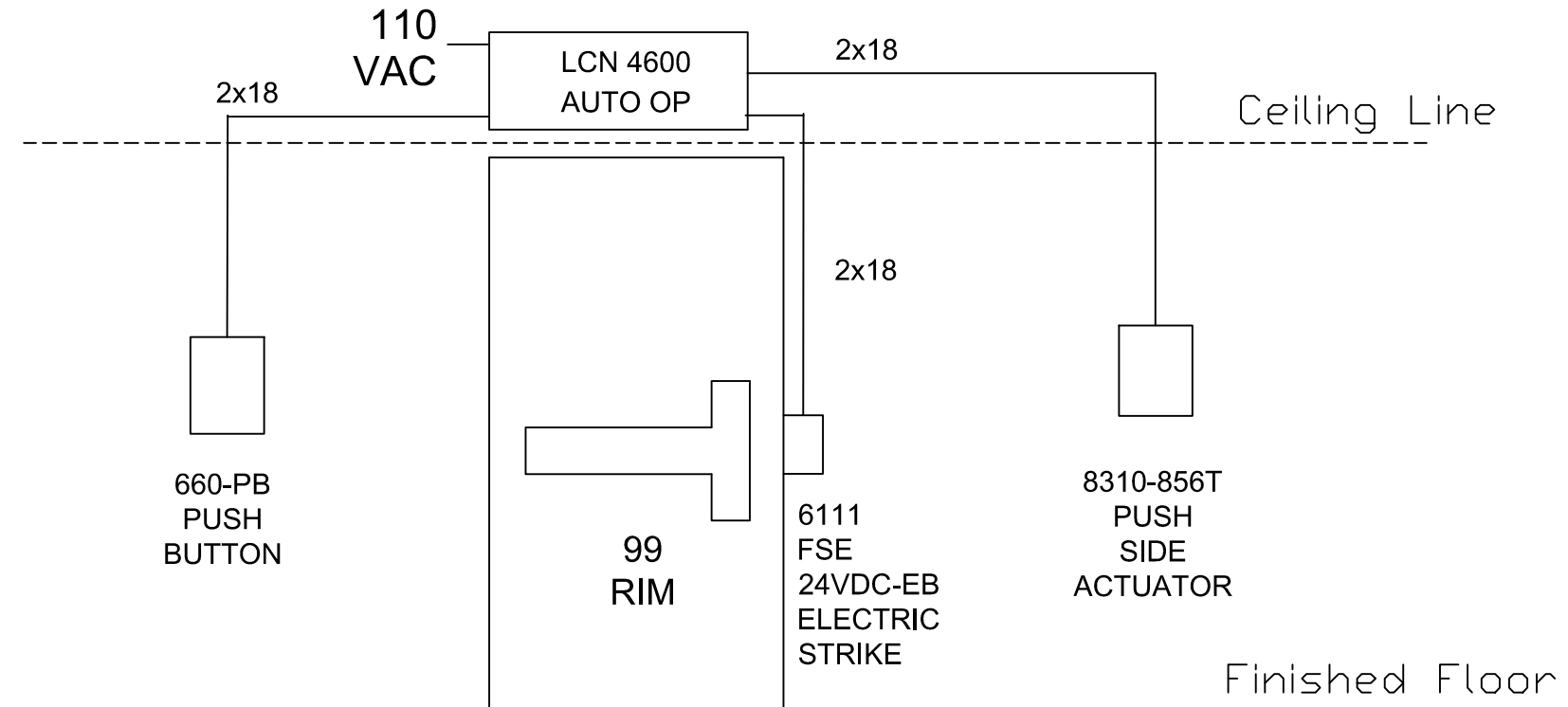


THIS DIAGRAM REPRESENTS A GENERIC CONFIGURATION. CUSTOM WIRING DIAGRAMS CAN BE ACQUIRED BY CONTACTING TECHNICAL SUPPORT.



NOTES:
 1) ALL LOW VOLTAGE WIRING TO BE STANDARD, MULTI-CONDUCTOR COLOR CODED WITHOUT SPLICES.
 2) WIRING TO CONFORM TO APPLICABLE NATIONAL, STATE AND LOCAL ELECTRICAL CODES.
 3) REFER TO SPECIFIC PRODUCT INSTALLATION INSTRUCTIONS FOR SPECIFIC WIRING REQUIREMENTS.
 4) THIS DRAWING IS FOR GRAPHICAL REPRESENTATION OF PRODUCTS DETAILED IN THE HARDWARE SET ONLY.
 5) ADDITIONAL WIRING WILL BE REQUIRED FROM ACP THAT IS NOT SHOWN HERE. CONSULT PROVIDER FOR DETAILS.

HARDWARE USED:
 1 4600 LCN AUTO OPERATOR
 1 99 EXIT DEVICE
 1 6111 FSE X EB ESTRIKE
 1 660PB BUTTON
 1 8310-856T ACTUATOR

OPERATION:
 8310-856 ACTUATOR FROM PUSH SIDE TO UNLOCK THE ELECTRIC STRIKE AND OPEN THE DOOR.
 660PB REMOTE PUSH BUTTON TO UNLOCK THE 6111 FSE ELECTRIC STRIKE AND OPEN THE DOOR.

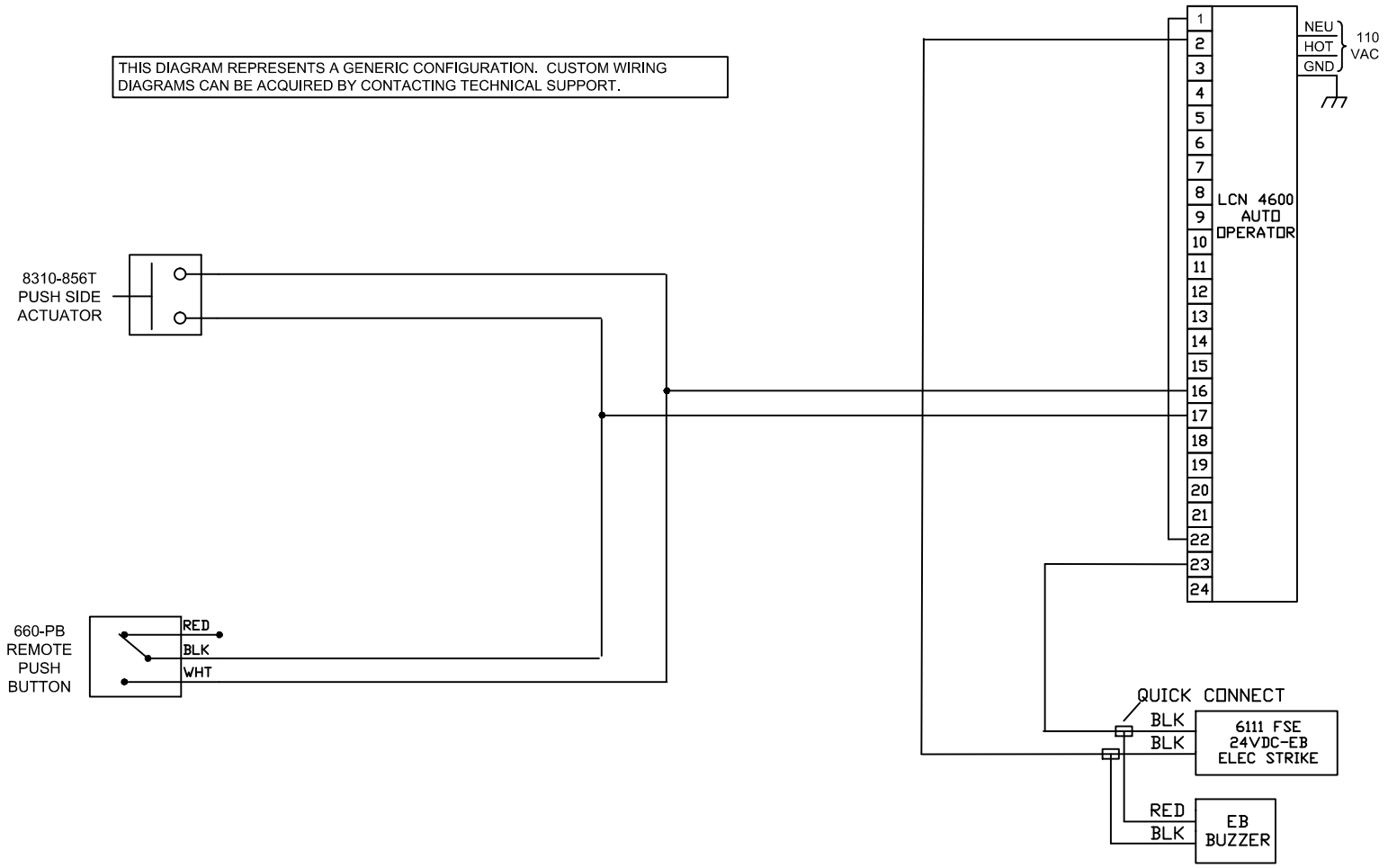
ALLEGION™ 

TITLE: LCN 4600 WITH 8310-856 ACT AND 660PB
 DRAWING TYPE: RISER DIAGRAM
 DWG NO: 109464
 DRAWN/CHECKED BY: B DOVE/D BOLLENGIER
 REV: A

TYPE: AUTO OPERATOR AND ACTUATORS

DATE DRAWN: 3-27-13 REVISION DATE: 3-27-13
 copyright 2013

THIS DIAGRAM REPRESENTS A GENERIC CONFIGURATION. CUSTOM WIRING DIAGRAMS CAN BE ACQUIRED BY CONTACTING TECHNICAL SUPPORT.




NOTES:
 1) ALL LOW VOLTAGE WIRING TO BE STANDARD, MULTI-CONDUCTOR COLOR CODED WITHOUT SPLICES.
 2) WIRING TO CONFORM TO APPLICABLE NATIONAL, STATE AND LOCAL ELECTRICAL CODES.
 3) REFER TO SPECIFIC PRODUCT INSTALLATION INSTRUCTIONS FOR SPECIFIC WIRING REQUIREMENTS.
 4) THIS DRAWING IS FOR GRAPHICAL REPRESENTATION OF PRODUCTS DETAILED IN THE HARDWARE SET ONLY.
 5) ADDITIONAL WIRING WILL BE REQUIRED FROM ACP THAT IS NOT SHOWN HERE. CONSULT PROVIDER FOR DETAILS.

HARDWARE USED:	1 4600 LCN AUTO OPERATOR 1 99 EXIT DEVICE 1 6111 FSE X EB ESTRIKE 1 660PB BUTTON 1 8310-856T ACTUATOR
TYPE:	AUTO OPERATOR AND ACTUATORS

OPERATION:
 8310-856 ACTUATOR FROM PUSH SIDE TOUNLOCK THE ELECTRIC STRIKE AND SOUND THE EB BUZZER THEN OPEN THE DOOR.
 660PB REMOTE PUSH BUTTON TO UNLOCK THE 6111-FSE ELECTRIC STRIKE AND SOUND THE EB BUZZER THEN OPEN THE DOOR.

DATE DRAWN: 3-27-13	REVISION DATE: 3-27-13
copyright 2013	



TITLE: LCN 4600 WITH 8310-856 ACT AND 660PB

DRAWING TYPE: WIRING DIAGRAM	DWG NO: 109464	REV: A
DRAWN/CHECKED BY: B DOVE/D BOLLENGIER		