



KILLEN SECURITY PRODUCTS

Killeen Machine Tool Co., Inc.

43 Sword Street • Auburn, MA 01501

1-800-KSP-KEYS

phone: 774-418-3336 • fax: 508-753-2183

e-mail: sales@iccore.com

www.iccore.com



At KSP, Customer Service is Second to None



AT KSP, CUSTOMER SERVICE IS SECOND TO NONE!

Located in Auburn, Massachusetts, Killeen Security Products (KSP), proudly manufactures security hardware products. All of our products have been made in the USA since 1983.

We manufacture many different keyways for the Small Interchangeable Core products that are interchangeable with Best, Arrow, & Falcon. We supply key blanks for every keyway we manufacture. KSP manufactures Mortise housings that have both the staked on and screw on cams available. Recently, we have added a convertible Mortise/Rim housing in the following styles: Medeco, Sargent, Schlage, Yale, Corbin Russwin, and our own KSP(SFIC). We supply locksmith tools such as capping blocks, housing wrenches, staking tools, pinning kits and capping presses.

KSP can assist your company in setting up keying systems providing the utmost security for your business. We can set up systems for all levels, from something as complex as a Great Great Grand Master Key system to something as simple as keying alike to a Control Key. We can combine cores to fit all of your needs and maintain these records for you. KSP is known for cores & housings but we also have the ability to assist our customers with custom applications. If you have a special project, please give us a call. We would welcome any opportunity to be of assistance.



Interchangeable Core Products

Table of Contents

SFIC Cores – Uncombined.	3
SFIC Showcase / Cabinet Locks.	3
SFIC- Construction Cores	4
SFIC Cores – Combined.	4
SFIC Mortise Housings.	5
SFIC Rim Housings	7
408 Convertible Housings	8
- LFIC Formats.	8
- SFIC Format	8
408 Convertible Housing Kits	8
Schlage LFIC Mortise Housings	10
Schlage LFIC Rim Housings	11
Spacers and Collars	12
Cam Kit K-Series.	13
SFIC Brass Padlocks.	13
Parts & Accessories	14
Tools	15
References.	17

SFIC Cores

Special finishes available. Contact us for pricing and lead-times.

SFIC Cores - Uncombined

Part Number	Description	Keyway	Finish
206	6 pin	X	4 / 26D
207	7 pin	X	4 / 26D



Order Example: 206 - A - 26D

A	B	C	1C	D	1D	DD	E	F
G	H	J	K	KMT300	L	M	Q	R

Above cores are also available in Slide Cap (FALCON style cores)

SFIC Slide Cap

(Falcon Style Core–Uncombined)

Order Example: 207SC - L - 04

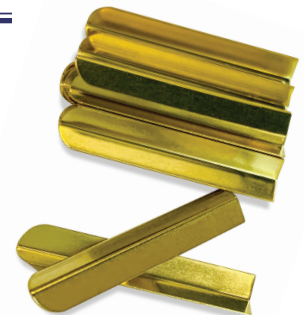
*Slide Cap (SC)
Example*



Falcon Style Capping Strips

Available for 6 pin and 7 pin cores.

Sold in bags of 50.



SFIC Showcase Lock / Sliding Glass Doors

Description	Keyway	Finish
7 pin	X	04 / 26D



SFIC Cores

Special finishes available. Contact us for pricing and lead-times.

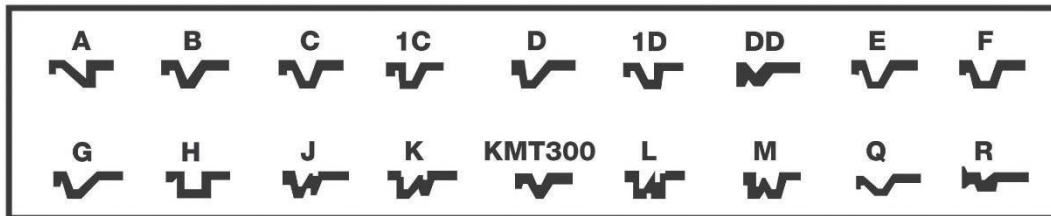
SFIC Cores - Combined

Part Number	Description	Keyway	Finish
206	6 pin	X	4 / 26D
207	7 pin	X	4 / 26D

Order Example: 206 - A - 26D Combined



Core Assembly



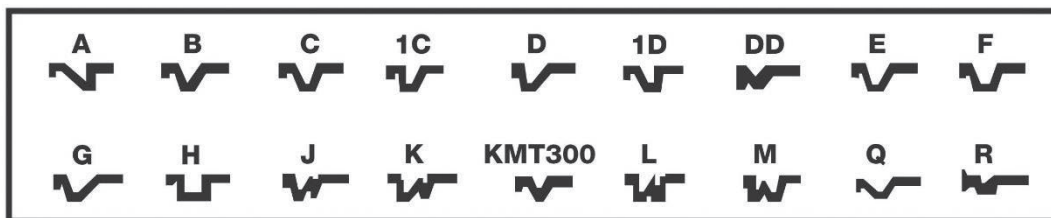
SFIC Key Blanks

Part Number	Description
400K (Keyway)	Sold in boxes of 50

Order Example: 400K-A, 400K-B, etc.



Key Blank Samples



SFIC Construction Cores

Available for 6 pin and 7 pin.

- Cores can be finished in green, red, black or blue.
- Cores can be combined to existing construction core systems.



SFIC Housings

Special finishes available. Contact us for pricing and lead-times.

Mortise Housings with Staked-on Cams

Part Number	Length	Description
306	1.25"	6 Pin Mortise Housing
307	1.37"	6/7 Pin Mortise Housing
307 Long	1.75"	6/7 Pin Mortise Housing
316	0.84"	6 Pin Tapered Head Housing
317	0.97"	6/7 Pin Tapered Head Housing



(316-600-26D)

Available Finishes

Number	Description
03	Bright Brass
04	Satin Brass
10	Satin Bronze
10B	Duro
26	Bright Chrome
26D	Satin Chrome



(306-600-26D)



(307-602-04)



(316 / 317 Example)



(306-601-26D)

Staked-on Housing Cams

Number	Description
600	Standard Cam
601	Adams Rite Cam
602	Clover Cam
602-S	Sargent Cam
602-L	Schlage Cam



600



601



602



602-L



602_S

SFIC Housings

Special finishes available. Contact us for pricing and lead-times.

SFIC Mortise Housings for Screw-on Cams

Part Number	Length	Description
406	1.25"	6 Pin Mortise Housing
407	1.37"	6/7 Pin Mortise Housing
407 Long	1.75"	6/7 Pin Mortise Housing
416	0.84"	6 Pin Tapered Head Housing
417	0.97"	6/7 Pin Tapered Head Housing

Available Finishes

Number	Description
03	Bright Brass
04	Satin Brass
10	Satin Bronze
10B	Duro
26	Bright Chrome
26D	Satin Chrome



(406-26D)



(407-04)



(416-26D)

Staked-on Housing Cams

Number	Description
K700	Standard Cam
K701	Adams Rite Cam
K702	Clover Cam
K702-S	Sargent Cam
K702-L	Schlage Cam

(Sold in bags of 20)



K700



K701



K702



K702-S



K702-L

SFIC Housings

Special finishes available. Contact us for pricing and lead-times.

SFIC Rim Housings

Part Number	Description
308	6/7 Pin Rim Housing
308-6	6 Pin Housing



308 Rim Housing, 26D Finish

Available Finishes

Number	Description
03	Bright Brass
04	Satin Brass
10	Satin Bronze
10B	Duro
26	Bright Chrome
26D	Satin Chrome

408 Convertible Housings

Special finishes available. Contact us for pricing and lead-times.

408 Convertible Housing Rim and Mortise Function in one!

All Housings Less Cam

- Eliminate excess inventory and SKU's
- Provides for flexibility
- No need to disassemble drive assembly
- Compatible with these LFIC & SFIC cores (individually boxed)

Manufacturer	Part Number	Length
Sargent	P/N 408 Sargent (finish)	1.24"
Schlage	P/N 408 Schlage (finish)	1.37"
Medeco	P/N 408 Medeco (finish)	1.22"
Corbin Russwin	P/N 408 Corbin Russwin (finish)	1.12"
Yale	P/N 408 Yale (finish)	1.40"
KSP (SFIC)	P/N 408 KSP (finish)	1.24"



Extra 408 Hardware Kit

408-CB-Extra: Tailpiece, Adapter and Screws (Rim Function), Collars, Back Plate, Breakaway Screws (individually wrapped)

K-Series Cam Pack

Part Number CKS-5

1 each: K700, K701, K702, K702S, K702L



408 Convertible Housings

Special finishes available. Contact us for pricing and lead-times.

408 Convertible Housing Kit

All Housings Less Cam

Convertible Housings

- Eliminate excess inventory and SKU's
- Provides for flexibility
- No need to disassemble drive assembly
- Designed with the locksmith in mind



408 Housing Kit

Contents

- Qty. 6, 408 Housing, choose from SFIC, Schlage, Sargent, Corbin Russwin, Yale and Medeco styles
- Qty. 6 each Cam: k700, K701, K702, K702S, K702L
- Screws for assembling tailpiece or cam, with Loctite pre-applied
- Qty. 3 Tailpieces, Adapter (patent pending) for rim installation
- Qty. 3 sets of breakaway screws and back plates of trim installation
- Miscellaneous Collars



408 with tailpiece



408 with Cam



SFIC



Schlage



Sargent



Corbin Russwin



Yale



Medeco

Housings Schlage

Special finishes available. Contact us for pricing and lead-times.

Schlage LFIC Mortise Housings

All Housings Less Cam

Part Number	Description
407-LFIC	Large format mortise cylinder housings



407-LFIC-04 (front view)

Available Finishes

Number	Description
03	Bright Brass
04	Satin Brass
10	Satin Bronze
10B	Duro
26	Bright Chrome
26D	Satin Chrome



407-LFIC-04 (back view)

Screw-on Housing Cams

Number	Description
K700	Standard Cam
K701	Adams Rite Cam
K702	Clover Cam
K702-S	Sargent Cam
K702-L	Schlage Cam

(Each Cam sold in bags of 10)



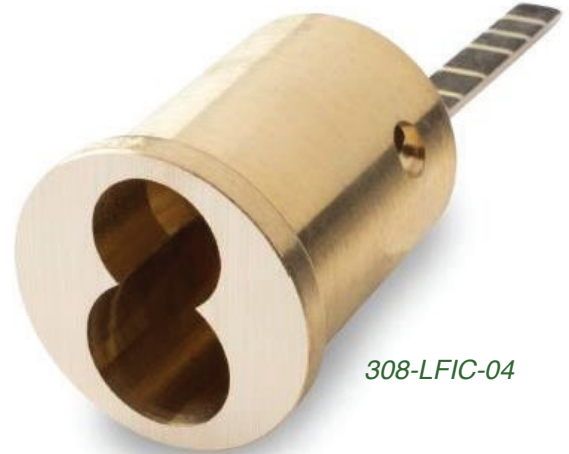
Housings Schlage

Special finishes available. Contact us for pricing and lead-times.

Schlage LFIC Rim Housings

All Housings Less Cam

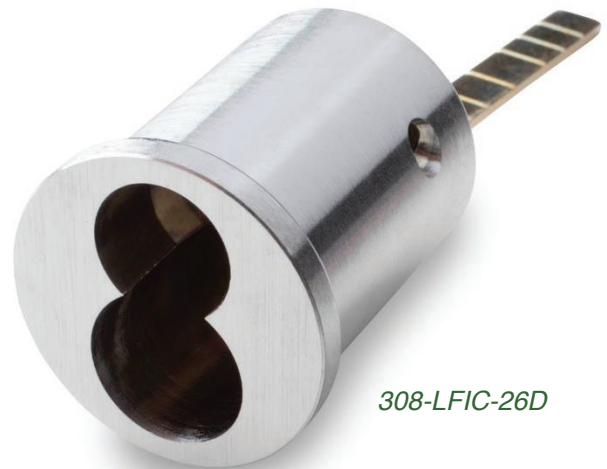
Part Number	Description
308-LFIC	Large format mortise cylinder housings
308-LFIC-SAR	Thread Spacing for Sargent Hardware



308-LFIC-04

Available Finishes

Number	Description
03	Bright Brass
04	Satin Brass
10	Satin Bronze
10B	Duro
26	Bright Chrome
26D	Satin Chrome



308-LFIC-26D

SFIC Housings

Special finishes available. Contact us for pricing and lead-times.

Spacers and Collars

Part Number	Description	Size
500	Rim	
501	Step Mortise	1/8" - 1/4"
502	Solid Collar	1/8" - 1/4" - 3/8"
503-26D	Solid Tapered Collar	3/16" Spacer
400-CA-26D	Hardened Spring Collar	



503-26D

(400-CA-26D)



Available Finishes

Number	Description
03	Bright Brass
10	Satin Bronze
10B	Duro
26D	Satin Chrome

3/8"



1/8"



1/4"

SFIC Housings

Special finishes available. Contact us for pricing and lead-times.

K-Series Cam Kit

Part Number	Description
K7CAMKIT	Cam Kit with various cams and accessories

Includes the following:

- Qty. 10–K700 screw-on cams
- Qty. 10–K701 screw-on cams
- Qty. 10–K702 screw-on cams
- Qty. 10–K702S screw-on cams
- Qty. 10–K702L screw-on cams

- 100 pcs–Cam Screws
(thread lock pre-applied)
 - Variety of solid spacers
 - Variety of step spacers
 - SFIC Turn Knob



K-Series Cam Kit

I/C Brass Padlocks

Part Number	Shackle Diameter	Shackle Length
801	5/16"	1-1/8"
802	5/16"	2"
803	5/16"	3"
804	5/16"	4"



Parts & Accessories

I/C Core Pin Kits

Part Number	Description
A2-Kit	Pin Kit



Pin Kit

I/C Capping Strips

Part Number	Description
614	Capping Strips



614

I/C Core Pin, Caps, Springs

Number	Description	Quantity
A2	0.108" dia. Pins	1000 / pack only
SFIC	Chamber Springs	100 / pack



I/C Core Pin, Caps, Springs

Part Number	Description	Quantity
603	Studs	100 / pack
604	Small Spacer	100 / pack
605	Large Spacer	100 / pack



Parts & Accessories

I/C Tools

Part Number	Description
309	SFIC Core Turn Knob
606	Capping Block & Punch
608	Staking Tool
609	SFIC Housing Wrench
610	Ejector Punch
611	KEY Cut – Decoding Gauge: A2, A3, A4

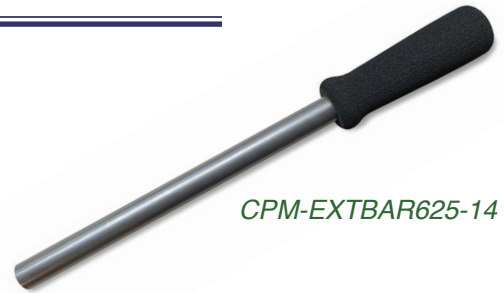


Parts & Accessories

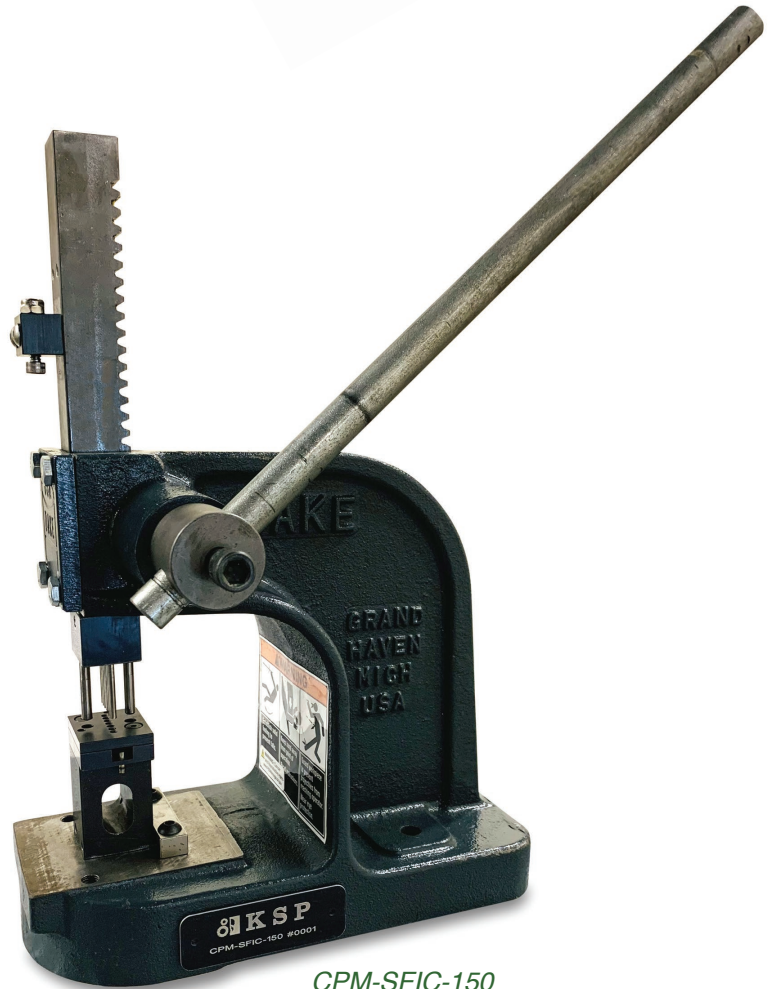
SFIC Capping Press

Part Number	Description
CPM-SFIC-150	SFIC Capping Press
CPM-EXTBAR625-14	Extension Bar (extends up to 20")

- Engineered and built in the USA to ensure a long service life
- Each unit is delivered set to OEM capping depth standards
- Designed to cap small format interchangeable cores with a 0.150" spacing
- For use with 6 and 7 pin cores
- Capping Press uses KSP P/N 614 capping Strips (also used in A1 style capping presses)
- Capping strip punching die designed for minimum effort
- Press comes with 12" long handle.
 - Optional extension handle available, which increases length to 20" and includes a comfortable grip
- Designed with help from top locksmiths and security professionals.



CPM-EXTBAR625-14

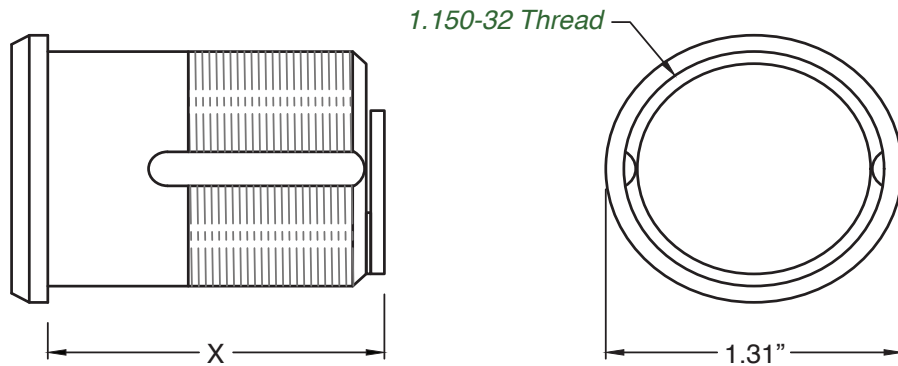


CPM-SFIC-150

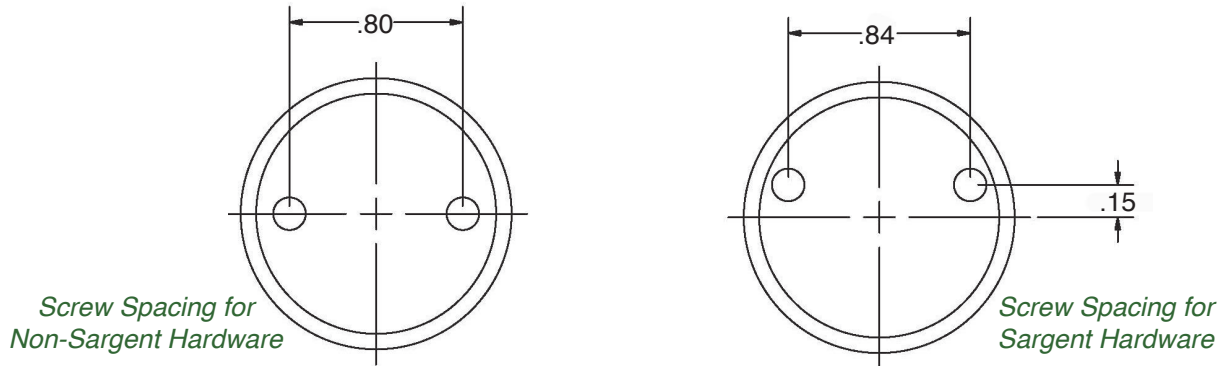
A MUST for high volume shops.

References

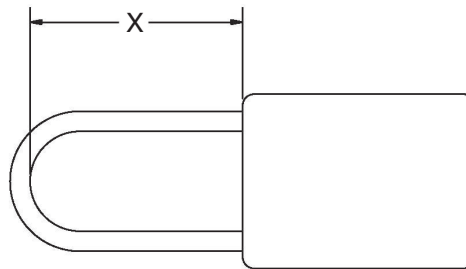
Housing Mounting Depth & Thread Data



Rim Cylinder Screw Spacing



Padlock Shackle Dimension



Plating Finishes

Part Number	US Number	Description
605	US3	Bright Brass
606	US4	Satin Brass (Brushed Brass)
625	US26	Bright Chrome
626	US26D	Satin Chrome (Brushed Chrome)
612	US10	Satin Bronze
613	US10B	Oil Rubbed Bronze
400-CA-26D	US19	Matte Black





KILLEEN SECURITY PRODUCTS

In 1983, Norman Doucet brought Doug Maston on board and together they created KSP. Within a year of its concept, KSP shipped its first order. Now, over 35 years later, KSP has built a strong reputation in the security industry and its products can be found all over the world. Both Norman and Doug have since passed away, but we believe they would be proud of the legacy they built.



Karen Zawalich
Sales & Marketing
Killeen Security Products



Brian Strom
Director of Sales & Marketing



Killeen Machine Tool Co., Inc.

43 Sword Street • Auburn, MA 01501

1-800-KSP-KEYS

phone: 774-418-3336 • fax: 508-753-2183

e-mail: sales@iccore.com

www.iccore.com