



ASSA ABLOY

Product Pricelist

USA & CANADA Effective Date: March 3, 2025

TARIFF PRICE ADJUSTMENTS EFFECTIVE
(In Addition to Prices Herein)

USA

[Read Letter](#)

CANADA

[Read Letter](#)



Experience a safer
and more open world



ASSA ABLOY

Product Pricelist

USA & CANADA Effective Date: March 3, 2025





HES Product List

Electric Strikes

1006	2
1500 Series™	4
1600 Series™	5
ES100 Aperio® Wireless Electric Strike with Card Reader Kits	6
4500C	7
5000, 5200, 5300	8
7000	9
7501	10
8000, 8300	10
8500	11
9100	11
9200	12
9400, 9500, 9600, 9700, 9800	13
Folger Adam SB:310-1(X)	14
Folger Adam 310-2, 310-2 3/4, 310-2 3/4OB	15
Folger Adam 310-3-1	15
Folger Adam 310-4, 310-4 (S)	16
Folger Adam 310-4-X	17
Folger Adam 310-6-X	18
Folger Adam 310-1-X	20
Folger Adam 712, 712-75	21
Folger Adam 732, 732-75	21
Folger Adam SB710, SB710-75	22
Folger Adam SB730, SB730-75	22
Folger Adam 742-75	23
Folger Adam SB740-75	23
Electric Strike Accessories	24

Cabinet Locks

610	25
660	25
KP20 Stand-Alone Keypad Cabinet Lock	25
KS-M Mechanical Server Cabinet Lock	26
KS200 Wiegand Integrated Wired Access Control Server Cabinet Lock	26
KS210 Integrated Wired, RS-485 OSDP Access Control Server Cabinet Lock	27
KS-M, KS200, KS210 Accessories	27

Warranties | Terms & Conditions

Warranties, Terms & Conditions	28
--------------------------------------	----

Electric Strikes

1006CLB Complete Pacs for Latchbolt Locks

MODEL	DESCRIPTION	630
1006CLB		\$790
1006CLB-F	Fail Safe	\$790
1006CLB-LBM		\$925
1006CLB-F-LBM	Fail Safe	\$925
1006CLB-LBSM		\$945
1006CLB-F-LBSM	Fail Safe	\$945



1006CDB Complete Pacs for Locks with Deadbolts

MODEL	DESCRIPTION	630
1006CDB		\$822
1006CDB-F	Fail Safe	\$822

1006CAS Complete Pacs for Locks with Continuous Deadbolt Recapture

MODEL	DESCRIPTION	630
1006CAS		\$832
1006CAS-F	Fail Safe	\$832
1006CAS-2		\$866
1006CAS-2-F	Fail Safe	\$866

1006CS Complete Pacs for Latchbolts & Deadbolts

MODEL	DESCRIPTION	630
1006CS		\$880
1006CS-F	Fail Safe	\$880

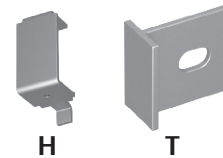
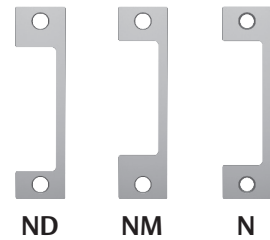
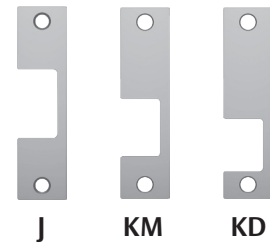
1006 Electric Strike Bodies

MODEL	DESCRIPTION	605	606	612	613E	629	630	BLK
1006		\$892	\$877	\$877	\$832	\$892	\$732	\$832
1006-F	Fail Safe	\$892	\$877	\$877	\$832	\$892	\$732	\$832
1006-LBM		\$1027	\$1012	\$1012	\$967	\$1027	\$867	\$967
1006-F-LBM	Fail Safe	\$1027	\$1012	\$1012	\$967	\$1027	\$867	\$967
1006-LBSM		\$1047	\$1032	\$1032	\$987	\$1047	\$887	\$984
1006-F-LBSM	Fail Safe	\$1047	\$1032	\$1032	\$987	\$1047	\$887	\$987

How to Orders on next page

Faceplates

MODEL	605	606	612	613E	629	630	BLK
LB						\$58	
DB						\$90	
DB2						\$116	
J	\$143	\$128	\$128	\$78	\$143	\$46	\$78
KD	\$143	\$128	\$128	\$78	\$143	\$46	\$78
KM	\$143	\$128	\$128	\$78	\$143	\$46	\$78
ND	\$169	\$153	\$153	\$104	\$169	\$72	\$104
NM	\$169	\$153	\$153	\$104	\$169	\$72	\$104
HM	\$169	\$153	\$153	\$104	\$169	\$72	\$104
HTD	\$169	\$153	\$153	\$104	\$169	\$72	\$104



Specialty Faceplates

MODEL	605	606	612	613E	629	630	BLK
E	\$169	\$153	\$153	\$153	\$169	\$72	\$104
R	\$169	\$153	\$153	\$104	\$169	\$72	\$104
Z	\$169	\$153	\$153	\$104	\$169	\$72	\$104
J-2	\$190	\$174	\$174	\$125	\$190	\$93	\$125
KM-2	\$190	\$174	\$174	\$125	\$190	\$93	\$125

Accessories

ITEM	DESCRIPTION	PRICE
1000-102	Rain guard	\$45
1000-104	Lip extension trim adapter (BLK)	\$83
1000-110	Replacement strike plate	\$137
1000-130	KD filler plate	\$61
1006-103	Full keeper shims	\$16
1006-105	Trim enhancer (BLK)	\$43

How to Order Specify quantity and the following information. Order related products separately.

SERIES	MODEL	FAIL SAFE/SECURE	FINISH*	OPTION(S)
1006	—	– F	– 630	– LBM
1006 Universal Electric Strike Faceplates ordered separately	<p>CS** Complete Electric Strike; includes the SMART Pac® III and J, KD, KM, HM, and AD faceplates</p> <p>CLB Complete Electric Strike for latchbolt locks; includes the J, K, KD, and KM faceplates</p> <p>CDB** Complete Electric Strike for Deadbolt Locks; includes the HM and AD faceplates</p> <p>CAS Complete Electric Strike for Locks with Continuous Deadbolt Recature; includes the ND and NM faceplates</p>	<p>F Fail Safe</p> <p>(blank) Fail Secure (standard)</p>	<p>605 Bright Brass</p> <p>606 Satin Brass</p> <p>612 Satin Bronze</p> <p>613E Dark Oxidized Satin Bronzed Powder</p> <p>629 Bright Stainless Steel</p> <p>630 Satin Stainless Steel</p> <p>BLK Black</p>	<p>LBM Latchbolt Monitor</p> <p>LBSM Latchbolt Strike Monitor</p>

*Complete Pacs are only available in the 630 finish. **Complete Pacs with deadbolts are not available with monitoring options.

1500C Series® Complete Pacs for Latchbolt Locks

MODEL	DESCRIPTION	605	606	612	613E	629	630	BSP
1500C		\$922	\$922	\$922	\$774	\$922	\$668	\$774
1500C-LM	Lock monitor	\$1030	\$1030	\$1030	\$882	\$1030	\$776	\$882
1500C-DLM	Dual lock monitors	\$1138	\$1138	\$1138	\$990	\$1138	\$884	\$990
1500C-LMS	Lock monitor & strike monitor	\$1046	\$1046	\$1046	\$898	\$1046	\$792	\$898
1500C-DLMS	Dual lock monitors & strike monitor	\$1154	\$1154	\$1154	\$1006	\$1154	\$900	\$1006



1500 Series® Electric Strike Bodies

MODEL	DESCRIPTION	605	606	612	613E	629	630	BSP
1500		\$742	\$732	\$732	\$682	\$742	\$612	\$682
1500-LM	Lock monitor	\$850	\$840	\$840	\$790	\$850	\$720	\$790
1500-DLM	Dual lock monitors	\$958	\$948	\$948	\$898	\$958	\$828	\$898
1500-LMS	Lock monitor & strike monitor	\$866	\$856	\$856	\$806	\$866	\$736	\$806
1500-DLMS	Dual lock monitors & strike monitor	\$974	\$964	\$964	\$914	\$974	\$844	\$914

1500 Series™ Faceplates

MODEL	DESCRIPTION	605	606	612	613E	629	630	BSP
1LB		\$180	\$190	\$190	\$92	\$180	\$56	\$92
1LB-2		\$241	\$154	\$154	\$128	\$241	\$92	\$128

1500 Series™ Accessories

MODEL	DESCRIPTION	605	606	612	613E	629	630	BSP
1500-104	Lip extension trim adapter	\$125	\$120	\$120	\$101	\$125	\$53	\$101
1500-106	4500 Filler plates and trim enhancer kit	\$118	\$113	\$113	\$92	\$118	\$46	\$92

Accessories

ITEM	DESCRIPTION	PRICE
OPT-1SRK	Optional spring replacement kit	\$55
OPT-1LM	Optional upgrade kit includes single lock monitor	\$108
OPT-1DLM	Optional kit includes dual lock monitors	\$216
MOD-1SOL	Solenoid replacement module	\$346

How to Order *Specify quantity and the following information. Order related products separately.*

SERIES	MODEL	FINISH	OPTION(S)*
1500	—	– 630	– LM
1500 Universal Electric Strike faceplate option kits ordered separately	C Complete Electric Strike; includes 1LB faceplate kit for latchbolts	605 Bright Brass 606 Satin Brass 612 Satin Bronze 613E Dark Oxidized Satin Bronze Powder 629 Bright Stainless Steel 630 Satin Stainless Steel BSP Black Suede Powder	LM Lock Monitor DLM Dual Lock Monitor LMS Lock Monitor and Strike Monitors DLMS Dual Lock Monitors and Strike Monitor

*LMS/DLMS factory installed only option.

1600CLB Series™ Complete Pacs for Latchbolt Locks

MODEL	DESCRIPTION	605	606	612	613E	629	630	BSP
1600-CLB		\$922	\$922	\$922	\$774	\$922	\$668	\$774
1600-CLB-LM	Lock monitor	\$1030	\$1030	\$1030	\$882	\$1030	\$776	\$882
1600-CLB-DLM	Dual lock monitors	\$1138	\$1138	\$1138	\$990	\$1138	\$884	\$990
1600-CLB-LMS	Lock monitor & strike monitor	\$1045	\$1046	\$1046	\$898	\$1045	\$792	\$898
1600-CLB-DLMS	Dual lock monitors & strike monitor	\$1153	\$1154	\$1154	\$1006	\$1153	\$900	\$1006

1600CDB Series™ Complete Pacs for Locks with Deadbolts

MODEL	DESCRIPTION	605	606	612	613E	629	630	BSP
1600-CDB		\$922	\$922	\$922	\$774	\$922	\$668	\$774
1600-CDB-LM	Lock monitor	\$1030	\$1030	\$1030	\$882	\$1030	\$776	\$882
1600-CDB-DLM	Dual lock monitors	\$1138	\$1138	\$1138	\$990	\$1138	\$884	\$990
1600-CDB-LMS	Lock monitor & strike monitor	\$1045	\$1046	\$1046	\$898	\$1045	\$792	\$898
1600-CDB-DLMS	Dual lock monitors & strike monitor	\$1153	\$1154	\$1154	\$1006	\$1153	\$900	\$1006

1600CS Series™ Complete Pacs for Latchbolts & Deadbolts

MODEL	DESCRIPTION	605	606	612	613E	629	630	BSP
1600-CS		\$1101	\$1112	\$1112	\$866	\$1101	\$724	\$866
1600-CS-LM	Lock monitor	\$1210	\$1220	\$1220	\$974	\$1210	\$832	\$974
1600-CS-DLM	Dual lock monitors	\$1318	\$1328	\$1328	\$1083	\$1318	\$941	\$1083
1600-CS-LMS	Lock monitor & strike monitor	\$1225	\$1236	\$1236	\$990	\$1225	\$848	\$990
1600-CS-DLMS	Dual lock monitors & strike monitor	\$1333	\$1344	\$1344	\$1098	\$1333	\$956	\$1098

1600 Series™ Electric Strike Bodies

MODEL	DESCRIPTION	605	606	612	613E	629	630	BSP
1600		\$742	\$732	\$732	\$682	\$742	\$612	\$682
1600-LM	Lock monitor	\$850	\$840	\$840	\$790	\$850	\$720	\$790
1600-DLM	Dual lock monitors	\$958	\$948	\$948	\$898	\$958	\$828	\$898
1600-LMS	Lock monitor & strike monitor	\$866	\$856	\$856	\$806	\$866	\$736	\$806
1600-DLMS	Dual lock monitors & strike monitor	\$974	\$964	\$964	\$914	\$974	\$844	\$914

1600 Series™ Faceplates

MODEL	605	606	612	613E	629	630	BSP
1LB	\$180	\$190	\$190	\$92	\$180	\$56	\$92
1LB-2	\$241	\$154	\$154	\$128	\$241	\$92	\$128
1DB	\$180	\$190	\$190	\$92	\$180	\$56	\$92
1DB-2	\$241	\$154	\$154	\$128	\$241	\$92	\$128

1600 Series™ Accessories

MODEL	DESCRIPTION	605	606	612	613E	629	630	BSP
1600-104	1600 Lip extension trim adapter	\$125	\$120	\$120	\$101	\$125	\$53	\$101
1600-106	1600 Adapter and trim enhancer kit	\$125	\$120	\$120	\$101	\$125	\$46	\$101

Accessories

ITEM	DESCRIPTION	PRICE
OPT-1SRK	Optional spring replacement kit	\$55
OPT-1LM	Optional upgrade kit includes single lock monitor	\$108
OPT-1DLM	Optional kit includes dual lock monitors	\$216
MOD-1SOL	Solenoid replacement module	\$346

How to Order Specify quantity and the following information. Order related products separately.

SERIES	MODEL	FINISH	OPTION(S)*
1600	– CS	– 630	– LM
1600 Universal Electric Strike; Faceplate option kits ordered separately	CS Complete Electric Strike; includes 1LB faceplate kit for latchbolts and 1DB faceplate kit for deadbolts	605 Bright Brass 606 Satin Brass	LM Lock Monitor DLM Dual Lock Monitors
	CLB Complete Electric Strike for Latchbolt Locks; includes 1LB faceplate kit for latchbolts	612 Satin Bronze 613E Dark Oxidized Satin Bronze Powder	LMS Lock Monitor and Strike Monitor DLMS Dual Lock Monitors and Strike Monitor
	CDB Complete Electric Strike for Deadbolt Locks; includes 1DB faceplate kit for deadbolts	629 Bright Stainless Steel 630 Satin Stainless Steel BSP Black Suede Powder	

*LMS/DLMS factory installed only option.



ES100-15 Aperio® Wireless Electric Strike with Card Reader Kits

MODEL	DESCRIPTION	630
ES100-15LH	Aperio® 1500 Wireless Electric Strike 1:1 Kit Latchbolts	\$1777
ES100-15LMH	Aperio® 1500 Monitored Wireless Electric Strike 1:1 Kit Latchbolts	\$1885

1500 Series™ Faceplates

MODEL	605	606	612	613E	629	630	BSP
1LB	\$180	\$190	\$190	\$92	\$180	\$56	\$92
1LB-2	\$241	\$154	\$154	\$128	\$241	\$92	\$128

1500 Series™ Accessories

MODEL	DESCRIPTION	605	606	612	613E	629	630	BSP
1500-104	Lip extension trim adapter	\$125	\$120	\$120	\$101	\$125	\$53	\$101
1500-106	4500 Filler plates and trim enhancer kit	\$118	\$113	\$113	\$92	\$118	\$46	\$92

ES100-15 Demo Mounts

ITEM	DESCRIPTION	PRICE
DEMO-ES100-15L-IPS-BSP	ES100-15 Aperio® Wireless Electric Strike Demo Mount For Latchbolts With Black Suede Powdercoat Finish and HID multiCLASS SE Card Reader, HID NFC Mobile Access Enabled	\$1298

ES100-16 Aperio® Wireless Electric Strike with Card Reader Kits

MODEL	DESCRIPTION	630
ES100-16LH	Aperio® 1600 Wireless Electric Strike 1:1 Kit Latchbolts	\$1777
ES100-16LMH	Aperio® 1600 Monitored Wireless Electric Strike 1:1 Kit Latchbolts	\$1885
ES100-16SH	Aperio® 1600 Wireless Electric Strike 1:1 Kit Latchbolts and Deadbolts	\$1833
ES100-16SMH	Aperio® 1600 Monitored Wireless Electric Strike 1:1 Kit Latchbolts and Deadbolts	\$1941

1600 Series™ Faceplates

MODEL	605	606	612	613E	629	630	BSP
1LB	\$180	\$190	\$190	\$92	\$180	\$56	\$92
1LB-2	\$241	\$154	\$154	\$128	\$241	\$92	\$128
1DB	\$180	\$190	\$190	\$92	\$180	\$56	\$92
1DB-2	\$241	\$154	\$154	\$128	\$241	\$92	\$128

1600 Series™ Accessories

MODEL	DESCRIPTION	605	606	612	613E	629	630	BSP
1600-104	1600 Lip extension trim adapter	\$125	\$120	\$120	\$101	\$125	\$53	\$101
1600-106	1600 Adapter and trim enhancer kit	\$125	\$120	\$120	\$101	\$125	\$46	\$101

ES100 Accessories

ITEM	DESCRIPTION	PRICE
OPT-1SRK	Optional spring replacement kit	\$55
OPT-1LM	Optional upgrade kit includes single lock monitor	\$108
EXT-10-ANT	ASSA ABLOY Aperio® Wireless Hub External Antenna (3, 9 DBi Omni-Directional)	\$73
ACC10	RFID test credentials	\$40
APD10USB	Used to configure both the Aperio product and/or Aperio hubs via the Program Application software.	\$700

How to Order *Specify quantity and the following information. Order related products separately.*

PRODUCT FAMILY	COMMUNICATION	MODEL SERIES	FACEPLATES	OPTIONS	CARD TECHNOLOGY	STRIKE FINISH
ES	100	- 15	L	H	-IPS	- 630
Electric Strike	100 Aperio Wireless	15 Reader and 1500 Strike 16 Reader and 1600 Strike	L Complete Pac for Latchbolts S* Complete Pac for Latchbolts and Deadbolts	H** Wholesale Kit MH** Wholesale Kit with Monitoring for High Security	IPS RFID (HID multiCLASS SE)	630 Satin Stainless Steel

*Available with 1600 Only. **Only available with L or S Complete Pac Options in 630 Finish.

HES ES100: The HES ES100 Electric Strike is available as either a pre-paired lock and hub kit (no certification required) or as a field configurable component (requires Aperio® Certified Integrator certification). Pre-paired kits support limited features. Field configured devices are required in order to support all options. Visit IntelligentOpenings.com to learn more.



4500C Complete Pacs for Latchbolt Locks

MODEL	DESCRIPTION	605	606	612	613E	629	630
4500C		\$951	\$934	\$934	\$890	\$951	\$792
4500C-LBM	Latchbolt monitor	\$1089	\$1072	\$1072	\$1028	\$1089	\$930
4500C-LBSM	Latchbolt strike monitor	\$1111	\$1094	\$1094	\$1050	\$1111	\$952

Accessories

ITEM	DESCRIPTION	PRICE
4500-105	Trim enhancer (BLK)	\$44
4500-110	Replacement strike plate	\$134
4500-131	Filler block	\$57
4501-1/2	1/2" stackable lip extension	\$75
4501-1	1" stackable lip extension	\$82



How to Order *Specify quantity and the following information. Order related products separately.*

SERIES	FINISH*	OPTION(S)
4500C	– 630	– LBM
4500C Complete Electric Strike; includes faceplates for cylindrical and mortise locks	605 Bright Brass	LBM Latchbolt Monitor
	606 Satin Brass	LBSM Latchbolt Strike Monitor
	612 Satin Bronze	
	613E Dark Oxidized Satin Bronzed Powder	
	629 Bright Stainless Steel	
	630 Satin Stainless Steel	

5000C, 5200C, 5300C Complete Pacs for Latchbolt Locks

MODEL	DESCRIPTION	630
5000C		\$230
5000C-LBM	Latchbolt monitor	\$325
5200C		\$240
5200C-LBM	Latchbolt monitor	\$335
5200C-LBSM	Latchbolt strike monitor	\$355
5300C		\$460
5300C-LBM	Latchbolt Monitor	\$555

5000, 5200, 5300 Electric Strike Bodies

MODEL	DESCRIPTION	630
5000		\$205
5000-LBM	Latchbolt monitor	\$300
5200		\$215
5200-LBM	Latchbolt monitor	\$310
5200-LBSM	Latchbolt strike monitor	\$330
5300		\$435
5300-LBM	Latchbolt Monitor	\$530



Faceplates

MODEL	605	606	612	613E	629	630	BSP
501	\$80	\$60	\$60	\$50	\$80	\$25	\$50
501A	\$85	\$65	\$65	\$55	\$85	\$30	\$55
502	\$106	\$87	\$87	\$77	\$106	\$52	\$77
503	\$106	\$87	\$87	\$77	\$106	\$52	\$77
504	\$106	\$87	\$87	\$77	\$106	\$52	\$77

Accessories

ITEM	DESCRIPTION	PRICE
5000-105	Trim enhancer (goof plate)	\$37
5104-1/2	1/2" stackable lip extension	\$62
5104-1	1" stackable lip extension	\$70
5104-1-1/4	1-1/4" stackable lip extension	\$72
5200-105	Trim enhancer (goof plate)	\$37
5200-500	Filler block	\$80
5204-1/2	1/2" stackable lip extension	\$62
5204-1	1" stackable lip extension	\$70
5204-1-1/4	1-1/4" stackable lip extension	\$72

How to Order Specify quantity and the following information. Order related products separately.

SERIES	MODEL	FINISH*	OPTION(S)*
5000	–	– 630	– LBM
5000, 5200, 5300	Universal Electric Strike; faceplate option kits ordered separately	C* Complete Electric Strike; includes the 501 and 501A faceplates	630 Satin Stainless Steel LBM Latchbolt Monitor LBSM** Latchbolt Strike Monitor

*Complete Pacs are only available in the 630 finish. **LBSM only available with 5200.

FACEPLATE OPTIONS	FINISH
502	– 613E
For Cylindrical Locksets (ANSI Metal)	605 Bright Brass
501 Option 4-7/8" x 1-1/4"	606 Satin Brass
For Cylindrical Locksets (Aluminum)	612 Satin Bronze
501A Option 4-7/8" x 1-1/4"	613E Dark Oxidized Satin Bronze Powder
502 Option 7-15/16" x 1-7/16"	629 Bright Stainless Steel
503 Option 6-7/8" x 1-1/4"	630 Satin Stainless Steel
For Cylindrical Locksets (Wood)	BSP Black Suede Powder
504 Option 10" x 1-3/8"	

7000C Complete Pacs for Latchbolt Locks

MODEL	DESCRIPTION	630
7000C		\$397
7000C-LBM	Latchbolt monitor	\$522

7000 Electric Strike Bodies

MODEL	DESCRIPTION	630
7000		\$325
7000-LBM	Latchbolt monitor	\$450

Faceplates

MODEL	605	606	612	613E	629	630	BLK
791	\$129	\$111	\$111	\$94	\$129	\$72	\$94
792	\$129	\$111	\$111	\$94	\$129	\$72	\$94
783S				\$276		\$194	
786S				\$302		\$215	
789S				\$302		\$215	

Accessories

ITEM	DESCRIPTION	PRICE
7000-104	Lip extension trim adapter (791 & 792 options only)	\$39
7000-105	Trim enhancer (goof plate) (791 & 792 options only)	\$39
7000-106	Keeper pocket adapter (783S & 789S options only)	\$38
7000-107	Full keeper shim pack	\$23
7000-108	Spacer plate (783S & 789S options, black finish only)	\$42
7000-110	Replacement strike plate (791 and 792 option)	\$131
SMB	Surface mounting box	\$250

How to Order Specify quantity and the following information. Order related products separately.

SERIES	MODEL	FINISH*	OPTION(S)
7000	—	— 630	— LBM
7000 Universal Electric Strike; faceplates ordered separately	C* Complete Electric Strike; includes the 791 and 792 faceplates (blank) Strike Body Only	630 Satin Stainless Steel	blank No Monitor LBM Latchbolt Monitor

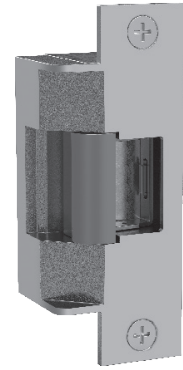
*Complete Pacs are only available in 630 finish.

FACEPLATE OPTIONS	FINISH
792	— 606
For Cylindrical Locksets	605 Bright Brass
791 Option 4-7/8" x 1-1/4"	606 Satin Brass
792 Option 7-15/16" x 1-7/16"	612 Satin Bronze
For Rim Exit Devices	613E Dark Oxidized Satin Bronze Powder
783S Option 9" x 1-3/4" x 11/16"	629 Bright Stainless Steel
786S Option 6-1/2" x 1-3/4" x 1/2"	630 Satin Stainless Steel
789S Option 9" x 1-3/4" x 1/2"	BLK Black



7501 Electric Strike

MODEL	DESCRIPTION	605	606	612	613E	629	630
7501		\$872	\$854	\$854	\$836	\$872	\$764
7501-LBM	Latchbolt monitor	\$999	\$981	\$981	\$963	\$999	\$891



How to Order Specify quantity and the following information. Order related products separately.

SERIES	FINISH*	OPTION(S)
7501	- 630	- LBM
7501 Universal Electric Strike; includes faceplate for cylindrical locksets	605 Bright Brass 606 Satin Brass 612 Satin Bronze 613E Dark Oxidized Satin Bronzed Powder 629 Bright Stainless Steel 630 Satin Stainless Steel	LBM Latchbolt Monitor

8000C, 8300C Complete Pac for Latchbolt Locks

MODEL	DESCRIPTION	630
8000C		\$284
8000C-LBM	Latchbolt monitor	\$398
8300C		\$629
8300C-LBM	Latchbolt monitor	\$744



8000, 8300 Electric Strike Bodies

MODEL	DESCRIPTION	630
8000		\$248
8000-LBM	Latchbolt monitor	\$362
8300		\$593
8300-LBM	Latchbolt monitor	\$708

Faceplates

MODEL	605	606	612	613E	629	630	BLK
801	\$99	\$79	\$79	\$61	\$99	\$36	\$61
801A	\$107	\$87	\$87	\$69	\$107	\$44	\$69
801E	\$99	\$79	\$79	\$61	\$99	\$36	\$61
802	\$121	\$101	\$101	\$83	\$121	\$58	\$83
803	\$121	\$101	\$101	\$83	\$121	\$58	\$83
805	\$121	\$101	\$101	\$83	\$121	\$58	\$83

How to Order Specify quantity and the following information. Order related products separately.

SERIES	MODEL	FINISH*	OPTION(S)
8000	-	- 630	- LBM
8000, 8300 Universal Electric Strike; faceplates ordered separately	C Complete Electric Strike; includes the 801 and 801A faceplates (blank) Strike Body Only	630 Satin Stainless Steel	LBM Latchbolt Monitor

*Complete Pacs are only available in 630 finish.

FACEPLATE OPTIONS	FINISH
801	- 613E
For Cylindrical Locksets (ANSI Metal)	605 Bright Brass
801 Option 4-7/8" x 1-1/4"	606 Satin Brass
For Cylindrical Locksets (Aluminum)	612 Satin Bronze
801A Option 4-7/8" x 1-1/4"	613E Dark Oxidized Satin Bronzed Powder
802 Option 7-15/16" x 1-7/16"	629 Bright Stainless Steel
803 Option 6-7/8" x 1-1/4"	630 Satin Stainless Steel
For Cylindrical Locksets (Wood)	
804 Option 10" x 1-3/8"	BLK Black

8500 Electric Strike Bodies

MODEL	DESCRIPTION	605	606	612	613E	629	630
8500		\$733	\$717	\$717	\$717	\$733	\$618
8500-LBM	Latchbolt monitor	\$859	\$843	\$843	\$843	\$859	\$744
8500-LBSM	Latchbolt strike monitor	\$880	\$863	\$863	\$863	\$880	\$764



Faceplates

MODEL		605	606	612	613E	629	630
851M	\$113	\$92	\$92	\$80	\$113	\$49	
852K	\$113	\$92	\$92	\$80	\$113	\$49	
852L	\$113	\$92	\$92	\$80	\$113	\$49	
852M	\$113	\$92	\$92	\$80	\$113	\$49	

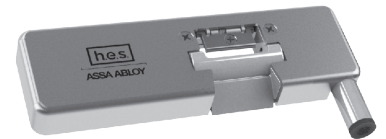
How to Order

Specify quantity and the following information. Order related products separately.

SERIES	FINISH*	OPTION(S)
8500	- 630	- LBM
8500 Universal Electric Strike; faceplates ordered separately	605 Bright Brass 606 Satin Brass 612 Satin Bronze 613E Dark Oxidized Satin Bronzed Powder 629 Bright Stainless Steel 630 Satin Stainless Steel	LBM Latchbolt Monitor LBSM Latchbolt Strike Monitor

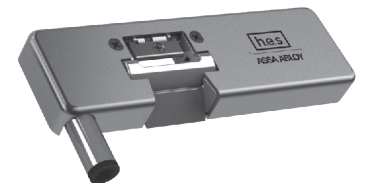
9100 Series Left Handed Surface Mounted Electric Strike

MODEL	DESCRIPTION	605	606	612	613E	629	630	BSP
9100L	Left handed	\$970	\$930	\$930	\$890	\$970	\$815	\$890
9100L-LM	Left handed with Latchbolt monitor	\$1050	\$1010	\$1010	\$970	\$1050	\$895	\$970
9100L-LMS	Left handed with Latchbolt strike monitor	\$1090	\$1050	\$1050	\$1010	\$1090	\$935	\$1010



9100 Series Right Handed Surface Mounted Electric Strike

MODEL	DESCRIPTION	605	606	612	613E	629	630	BSP
9100R	Right handed	\$970	\$930	\$930	\$890	\$970	\$815	\$890
9100R-LM	Right handed with Latchbolt monitor	\$1050	\$1010	\$1010	\$970	\$1050	\$895	\$970
9100R-LMS	Right handed with Latchbolt strike monitor	\$1090	\$1050	\$1050	\$1010	\$1090	\$935	\$1010



How to Order

SERIES	HANDING	FINISH	OPTION(S)
9100	L	- 630	
9100 Electric Strike for tubular, vertical rod exit devices for single doors	L Left Hand/Right Hand Reverse	605 Bright Brass	(blank) No Monitoring
	R Right Hand/Left Hand Reverse	606 Satin Brass	LM Latchbolt Monitoring
		612 Satin Bronze	LMS Latchbolt and Strike Monitoring
		613E Dark Oxidized Satin Bronze Powder	
		629 Bright Stainless Steel	
		630 Satin Stainless Steel	
	BSP Black Suede Powder		

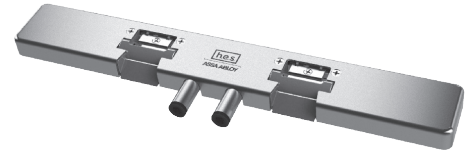
NOTE: Electric strike compatibility is determined at time of electric strike product release. ASSA ABLOY is not responsible for incompatibility of products that have changed in design or craftsmanship by their respective manufacturers. When compatibility is a concern, contact Customer Support for application assistance.

9100, 9200 Accessories

ITEM	DESCRIPTION	PRICE
RK-ESK1	9100 Retrofit Kit for ESK1/ESK-SGL	\$300
RK-ESK2	9200 Retrofit Kit for ESK2/ESK-DBL	\$400

9200 Series Narrow Surface Mounted Electric Strike

MODEL	DESCRIPTION	605	606	612	613E	629	630	BSP
9200N		\$1785	\$1735	\$1735	\$1645	\$1785	\$1530	\$1645
9200N-LM	Latchbolt Monitoring	\$1915	\$1865	\$1865	\$1775	\$1915	\$1660	\$1775
9200N-LMS	Latchbolt and Strike Monitoring	\$1965	\$1915	\$1915	\$1825	\$1965	\$1710	\$1825



9200 Series Wide Surface Mounted Electric Strike

MODEL	DESCRIPTION	605	606	612	613E	629	630	BSP
9200W		\$1785	\$1735	\$1735	\$1645	\$1785	\$1530	\$1645
9200W-LM	Latchbolt Monitoring	\$1915	\$1865	\$1865	\$1775	\$1915	\$1660	\$1775
9200W-LMS	Latchbolt and Strike Monitoring	\$1965	\$1915	\$1915	\$1825	\$1965	\$1710	\$1825



How to Order

SERIES	KEEPER SPACING	FINISH	OPTION (S)
9200	W	- 630	
9200 Electric Strike for tubular, vertical rod exit devices for double doors	N 4-5/8"	605 Bright Brass	(blank) No Monitoring
		606 Satin Brass	LM Latchbolt Monitoring
	W 8-3/8"	612 Satin Bronze	LMS Latchbolt and Strike Monitoring
		613E Dark Oxidized Satin Bronze Powder	
		629 Bright Stainless Steel	
		630 Satin Stainless Steel	
		BSP Black Suede Powder	

NOTE: Electric strike compatibility is determined at time of electric strike product release. ASSA ABLOY is not responsible for incompatibility of products that have changed in design or craftsmanship by their respective manufacturers. When compatibility is a concern, contact Customer Support for application assistance.

9400, 9500, 9600, 9700, 9800 Surface Mounted Electric Strikes for Rim Exit Devices

MODEL	DESCRIPTION	605	606	612	613	613E	628E	629	630	BSP
9400		\$746	\$731	\$731	\$746	\$676		\$746	\$591	\$676
9400-LBM	Latchbolt monitor	\$886	\$856	\$856	\$871	\$801		\$871	\$716	\$801
9400-LBSM	Latchbolt strike monitor	\$886	\$871	\$871	\$886	\$816		\$886	\$731	\$816
9500		\$848	\$833	\$833	\$848	\$778		\$848	\$693	\$778
9500-LBM	Latchbolt monitor	\$973	\$958	\$958	\$973	\$903		\$973	\$818	\$903
9500-LBSM	Latchbolt strike monitor	\$988	\$973	\$973	\$988	\$918		\$988	\$833	\$918
9600		\$746	\$731	\$731	\$746	\$676		\$746	\$591	\$676
9600-LBM	Latchbolt monitor	\$871	\$856	\$856	\$871	\$801		\$871	\$716	\$801
9600-LBSM	Latchbolt strike monitor	\$886	\$871	\$871	\$886	\$816		\$886	\$731	\$816
9700		\$863	\$848	\$848	\$863	\$793		\$863	\$708	\$793
9700-LBM	Latchbolt monitor	\$988	\$973	\$973	\$988	\$918		\$988	\$833	\$918
9700-LBSM	Latchbolt strike monitor	\$1003	\$988	\$988	\$1003	\$933		\$1003	\$848	\$933
9800		\$863	\$848			\$793	\$793	\$863	\$708	\$793
9800-LBM	Latchbolt monitor	\$988	\$973			\$920	\$920	\$988	\$833	\$920
9800-LBSM	Latchbolt strike monitor	\$1003	\$988			\$935	\$935	\$1003	\$848	\$935



Accessories

ITEM	DESCRIPTION	PRICE
9000-MTK	Metal template installation kit	\$95
SMB	Surface mounting box	\$250

Spacer Plates/ Brackets

MODEL	DESCRIPTION	613E	628	628E	630	BSP
9000-108	1/8" Spacer plate	\$55		\$55	\$40	\$55
9000-116	1/16" Spacer plate	\$55		\$55	\$40	\$55
9000-ASB	Aluminum spacer bracket	\$130	\$119			\$130

How to Order Specify quantity and the following information. Order related products separately.

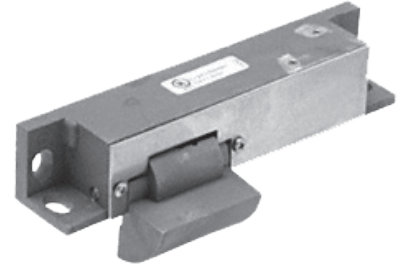
SERIES	FINISH	OPTION(S)
9600	- 630	- LBM
9400 Surface Mounted Electric Strike for 1/2" Pullman Exit Device; no faceplates required	605 Bright Brass 606 Satin Brass	LBM Latchbolt Monitor LBSM Latchbolt Strike Monitor
9500 Surface Mounted Electric Strike for 3/4" Pullman, fire rated; no faceplates required	612 Satin Bronze 613 Bronze Toned	
9600 Surface Mounted Electric Strike for 3/4" Pullman Rim Exit Devices, non-fire rated; no faceplates required	613E Dark Oxidized Satin Bronze Powder 629 Bright Stainless Steel	
9700 Surface Mounted Electric Strike for Corbin Russwin SecureBolt® and ASSA ABLOY Accentra™**Rim Exit Devices; no faceplates required	628E* Satin Aluminum Powder 630 Satin Stainless Steel	
9800 Surface Mounted Electric Strike for Adams Rite® Starwheel and Interlocking Rim Exit Devices; no faceplates required	BSP Black Suede Powder	

*Only Available on 9800 ** Formerly Yale Commercial

Folger Adam SB:310-1(1/2)

Electric Strike Bodies

ITEM	DESCRIPTION	PRICE
SB:310-1(1/2)-12D		\$776
SB:310-1(1/2)-24D		\$776
SB:310-1(1/2)-F-12D	Fail safe	\$776
SB:310-1(1/2)-F-24D	Fail safe	\$776
SB:310-1(1/2)-12D-LCBMA		\$980
SB:310-1(1/2)-24D-LCBMA		\$980
SB:310-1(1/2)-F-12D-LCBMA	Fail safe	\$980
SB:310-1(1/2)-F-24D-LCBMA	Fail safe	\$980



Folger Adam SB:310-1(3/4)

Electric Strike Bodies

ITEM	DESCRIPTION	PRICE
SB:310-1(3/4)-12D		\$776
SB:310-1(3/4)-24D		\$776
SB:310-1(3/4)-F-12D	Fail safe	\$776
SB:310-1(3/4)-F-24D	Fail safe	\$776
SB:310-1(3/4)-12D-LCBMA		\$980
SB:310-1(3/4)-24D-LCBMA		\$980
SB:310-1(3/4)-F-12D-LCBMA	Fail safe	\$980
SB:310-1(3/4)-F-24D-LCBMA	Fail safe	\$980

Folger Adam SB:310-1(1)

Electric Strike Bodies

ITEM	DESCRIPTION	PRICE
SB:310-1(1)-12D		\$776
SB:310-1(1)-24D		\$776
SB:310-1(1)-F-12D	Fail safe	\$776
SB:310-1(1)-F-24D	Fail safe	\$776
SB:310-1(1)-12D-LCBMA		\$980
SB:310-1(1)-24D-LCBMA		\$980
SB:310-1(1)-F-12D-LCBMA	Fail safe	\$980
SB:310-1(1)-F-24D-LCBMA	Fail safe	\$980

Folger Adam SB:310-1(PK)

Electric Strike Bodies

ITEM	DESCRIPTION	PRICE
SB:310-1(PK)-12D		\$776
SB:310-1(PK)-24D		\$776
SB:310-1(PK)-F-12D	Fail safe	\$776
SB:310-1(PK)-F-24D	Fail safe	\$776
SB:310-1(PK)-12D-LCBMA		\$980
SB:310-1(PK)-24D-LCBMA		\$980
SB:310-1(PK)-F-12D-LCBMA	Fail safe	\$980
SB:310-1(PK)-F-24D-LCBMA	Fail safe	\$980

Folger Adam SB:310-1(SK)

Electric Strike Bodies

ITEM	DESCRIPTION	PRICE
SB:310-1(SK)-12D		\$806
SB:310-1(SK)-24D		\$806
SB:310-1(SK)-F-12D	Fail safe	\$806
SB:310-1(SK)-F-24D	Fail safe	\$806
SB:310-1(SK)-12D-LCBMA		\$1010
SB:310-1(SK)-24D-LCBMA		\$1010
SB:310-1(SK)-F-12D-LCBMA	Fail safe	\$1010
SB:310-1(SK)-F-24D-LCBMA	Fail safe	\$1010

How to Order Specify quantity and the following information. Order related products separately.

PREFIX	SERIES	KEEPER STYLE	FAIL SAFE/SECURE	VOLTAGE	OPTION(S)
SB	310-1	(3/4)	- F	- 24D	- LCBMA
Strike BODY ONLY					
SB Strike Body	310-1 Strike Body Only	(1/2) 1/2" keeper (3/4) 3/4" keeper (1) 1" keeper (PK) For use with 3/4" Pullman style latchbolts (SK) For use with Corbin Russwin® Securebolt® and ASSA ABLOY ACCENTRA™* Squarebolt® style rim exit devices	(blank) Fail Secure (Standard) F Fail Safe	12D 12 Volt 24D 24 Volt	LCBMA Latchbolt & locking cam monitor with auxiliary switch

* Formerly Yale Commercial

Folger Adam 310-2 Electric Strike for Latchbolt Locks

MODEL	DESCRIPTION	605	606	612	613E	629	630
310-2-12D		\$1154	\$1104	\$1104	\$1044	\$1154	\$989
310-2-24D		\$1154	\$1104	\$1104	\$1044	\$1154	\$989
310-2-F-12D	Fail safe	\$1154	\$1104	\$1104	\$1044	\$1154	\$989
310-2-F-24D	Fail safe	\$1154	\$1104	\$1104	\$1044	\$1154	\$989
310-2-12D-LCBMA		\$1357	\$1307	\$1307	\$1247	\$1357	\$1192
310-2-24D-LCBMA		\$1357	\$1307	\$1307	\$1247	\$1357	\$1192
310-2-F-12D-LCBMA	Fail safe	\$1357	\$1307	\$1307	\$1247	\$1357	\$1192
310-2-F-24D-LCBMA	Fail safe	\$1357	\$1307	\$1307	\$1247	\$1357	\$1192

Folger Adam 310-2 3/4 Electric Strike for Latchbolt Locks

MODEL	DESCRIPTION	605	606	612	613E	629	630
310-2 3/4-12D		\$1292	\$1242	\$1242	\$1185	\$1292	\$1127
310-2 3/4-24D		\$1292	\$1242	\$1242	\$1185	\$1292	\$1127
310-2 3/4-F-12D	Fail safe	\$1292	\$1242	\$1242	\$1185	\$1292	\$1127
310-2 3/4-F-24D	Fail safe	\$1292	\$1242	\$1242	\$1185	\$1292	\$1127
310-2 3/4-12D-LCBMA		\$1495	\$1445	\$1445	\$1388	\$1495	\$1330
310-2 3/4-24D-LCBMA		\$1495	\$1445	\$1445	\$1388	\$1495	\$1330
310-2 3/4-F-12D-LCBMA	Fail safe	\$1495	\$1445	\$1445	\$1388	\$1495	\$1330
310-2 3/4-F-24D-LCBMA	Fail safe	\$1495	\$1445	\$1445	\$1388	\$1495	\$1330

Folger Adam 310-2 3/4OB Electric Strike for Latchbolt Locks

MODEL	DESCRIPTION	605	606	612	613E	629	630
310-2 3/4OB-12D		\$1561	\$1511	\$1511	\$1471	\$1561	\$1396
310-2 3/4OB-24D		\$1561	\$1511	\$1511	\$1471	\$1561	\$1396
310-2 3/4OB-F-12D	Fail safe	\$1561	\$1511	\$1511	\$1471	\$1561	\$1396
310-2 3/4OB-F-24D	Fail safe	\$1561	\$1511	\$1511	\$1471	\$1561	\$1396

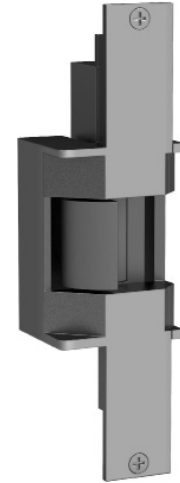
Folger Adam 310-3-1 Electric Strike for Latchbolt Locks & Deadbolts

MODEL	DESCRIPTION	605	606	612	613E	629	630
310-3-1-12D		\$1578	\$1528	\$1528	\$1489	\$1578	\$1413
310-3-1-24D		\$1578	\$1528	\$1528	\$1489	\$1578	\$1413
310-3-1-F-12D	Fail safe	\$1578	\$1528	\$1528	\$1489	\$1578	\$1413
310-3-1-F-24D	Fail safe	\$1578	\$1528	\$1528	\$1489	\$1578	\$1413
310-3-1-12D-LCBMA		\$1781	\$1731	\$1731	\$1692	\$1781	\$1616
310-3-1-24D-LCBMA		\$1781	\$1731	\$1731	\$1692	\$1781	\$1616
310-3-1-F-12D-LCBMA	Fail safe	\$1781	\$1731	\$1731	\$1692	\$1781	\$1616
310-3-1-F-24D-LCBMA	Fail safe	\$1781	\$1731	\$1731	\$1692	\$1781	\$1616

How to Order Specify quantity and the following information. Order related products separately.

SERIES	FAIL SAFE/SECURE	VOLTAGE	FINISH	OPTION(S)
310-2	- F	- 24D	- 613E	- LCBMA
KEEPER STYLE				
310-2 1/2" keeper standard; for up to a 5/8" throw latchbolt	(blank) Fail Secure (Standard)	12D 12 Volt 24D 24 Volt	605 Bright Brass 606 Satin Brass 612 Satin Bronze 613E Dark Oxidized Satin Bronze Powder 629 Bright Stainless Steel 630 Satin Stainless Steel	LCBMA* Latchbolt & locking cam monitor with auxiliary switch
310-2 3/4 3/4" keeper standard; for up to a 3/4" throw latchbolt without deadbolt	F Fail Safe			
310-2 3/4OB* 3/4" keeper standard; for a pair of doors without a door coordinator				
310-3-1 1" keeper standard; for up to a 3/4" throw latchbolt and a 1" deadbolt				

*LCBMA not available with 310-2 3/4OB.



Faceplates

MODEL	605	606	612	613E	629	630
FP-310-2	\$373	\$328	\$328	\$278	\$373	\$218

Faceplates

MODEL	605	606	612	613E	629	630
FP-310-2-34	\$514	\$469	\$469	\$419	\$514	\$359

Faceplates

MODEL	605	606	612	613E	629	630
FP-310-2-34OB	\$784	\$739	\$739	\$689	\$784	\$629

Faceplates

MODEL	605	606	612	613E	629	630
FP-310-3-1	\$805	\$760	\$760	\$710	\$805	\$650

How to Order

PREFIX	SERIES	FINISH
FP	- 310-2 3/4OB	- 630

FACEPLATE ONLY

FP Faceplate	310-2 1/2" keeper standard; for up to a 5/8" throw latchbolt	605 Bright Brass 606 Satin Brass
	310-2 3/4 3/4" keeper standard; for up to a 3/4" throw latchbolt without deadbolt	612 Satin Bronze 613E Dark Oxidized Satin Bronze Powder
	310-2 3/4OB 3/4" keeper standard; for a pair of doors without a door coordinator	629 Bright Stainless Steel 630 Satin Stainless Steel
	310-3-1 1" keeper standard; for up to a 3/4" throw latchbolt and a 1" deadbolt	

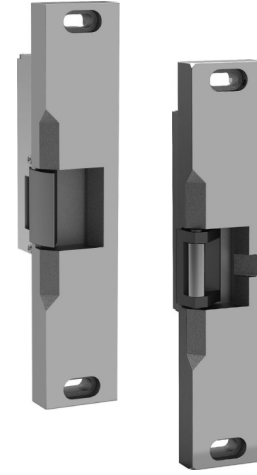


Folger Adam 310-4 Electric Strike for Pullman Rim Exit Devices

MODEL	DESCRIPTION	605	606	612	613E	629	630
310-4-12D		\$1190	\$1145	\$1145	\$1095	\$1190	\$1035
310-4-24D		\$1190	\$1145	\$1145	\$1095	\$1190	\$1035
310-4-F-12D	Fail safe	\$1190	\$1145	\$1145	\$1095	\$1190	\$1035
310-4-F-24D	Fail safe	\$1190	\$1145	\$1145	\$1095	\$1190	\$1035
310-4-12D-LCBMA		\$1391	\$1346	\$1346	\$1296	\$1391	\$1236
310-4-24D-LCBMA		\$1391	\$1346	\$1346	\$1296	\$1391	\$1236
310-4-F-12D-LCBMA	Fail safe	\$1391	\$1346	\$1346	\$1296	\$1391	\$1236
310-4-F-24D-LCBMA	Fail safe	\$1391	\$1346	\$1346	\$1296	\$1391	\$1236

Folger Adam 310-4(S) Electric Strike for Squarebolt® Rim Exit Device

MODEL	DESCRIPTION	605	606	612	613E	629	630
310-4(S)-12D		\$1253	\$1208	\$1208	\$1158	\$1253	\$1098
310-4(S)-24D		\$1253	\$1208	\$1208	\$1158	\$1253	\$1098
310-4(S)-F-12D	Fail safe	\$1253	\$1208	\$1208	\$1158	\$1253	\$1098
310-4(S)-F-24D	Fail safe	\$1253	\$1208	\$1208	\$1158	\$1253	\$1098
310-4(S)-12D-LCBMA		\$1454	\$1409	\$1409	\$1359	\$1454	\$1299
310-4(S)-24D-LCBMA		\$1454	\$1409	\$1409	\$1359	\$1454	\$1299
310-4(S)-F-12D-LCBMA	Fail safe	\$1454	\$1409	\$1409	\$1359	\$1454	\$1299
310-4(S)-F-24D-LCBMA	Fail safe	\$1454	\$1409	\$1409	\$1359	\$1454	\$1299



How to Order *Specify quantity and the following information. Order related products separately.*

SERIES	FAIL SAFE/SECURE	VOLTAGE	FINISH	OPTION(S)
310-4 (S)	- F	- 24D	- 613E	- LCBMA
KEEPER STYLE				
310-4 PK keeper standard; for use with 3/4" Pullman style latchbolts	(blank) Fail Secure (Standard) F Fail Safe	12D 12 Volt 24D 24 Volt	605 Bright Brass 606 Satin Brass 612 Satin Bronze 613E Dark Oxidized Satin Bronze Powde 629 Bright Stainless Steel 630 Satin Stainless Steel	LCBMA* Latchbolt & locking cam monitor with auxiliary switch
310-4(S) SK keeper standard; for use with Corbin Russwin® Securebolt® and ASSA ABLOY ACCENTRA™** Squarebolt® style rim exit devices style rim exit devices				

*LCBMA not available with 310-2 3/4OB. ** Formerly Yale Commercial

Faceplates

MODEL	605	606	612	613E	629	630
FP-310-4	\$417	\$372	\$372	\$322	\$417	\$262

Faceplates

MODEL	605	606	612	613E	629	630
FP-310-4-SK	\$463	\$418	\$418	\$368	\$463	\$308

How to Order

PREFIX	SERIES	KEEPER STYLE	FINISH
FP	- 310-4	(SK)	- 630
FACEPLATE ONLY			
FP Faceplate	310-4	(Blank) Keeper standard; for use with 3/4" Pullman style latchbolts (SK) For use with Corbin Russwin® Securebolt® and ASSA ABLOY ACCENTRA™** Squarebolt® style rim exit devices style rim exit devices	605 Bright Brass 606 Satin Brass 612 Satin Bronze 613E Dark Oxidized Satin Bronze Powde 629 Bright Stainless Steel 630 Satin Stainless Steel

* Formerly Yale Commercial

Folger Adam 310-4-1 Electric Strike for Surface Vertical Rods

MODEL	DESCRIPTION	605	606	612	613E	629	630
310-4-1-12D		\$2033	\$1983	\$1983	\$1963	\$2033	\$1933
310-4-1-24D		\$2033	\$1983	\$1983	\$1963	\$2033	\$1933
310-4-1-F-12D	Fail safe	\$2033	\$1983	\$1983	\$1963	\$2033	\$1933
310-4-1-F-24D	Fail safe	\$2033	\$1983	\$1983	\$1963	\$2033	\$1933
310-4-1-12D-LCBMA		\$2395	\$2345	\$2345	\$2325	\$2395	\$2295
310-4-1-24D-LCBMA		\$2395	\$2345	\$2345	\$2325	\$2395	\$2295
310-4-1-F-12D-LCBMA	Fail safe	\$2395	\$2345	\$2345	\$2325	\$2395	\$2295
310-4-1-F-24D-LCBMA	Fail safe	\$2395	\$2345	\$2345	\$2325	\$2395	\$2295

Folger Adam 310-4-2 Electric Strike for Surface Vertical Rods

MODEL	DESCRIPTION	605	606	612	613E	629	630
310-4-2-12D		\$2033	\$1983	\$1983	\$1963	\$2033	\$1933
310-4-2-24D		\$2033	\$1983	\$1983	\$1963	\$2033	\$1933
310-4-2-F-12D	Fail safe	\$2033	\$1983	\$1983	\$1963	\$2033	\$1933
310-4-2-F-24D	Fail safe	\$2033	\$1983	\$1983	\$1963	\$2033	\$1933
310-4-2-12D-LCBMA		\$2395	\$2345	\$2345	\$2325	\$2395	\$2295
310-4-2-24D-LCBMA		\$2395	\$2345	\$2345	\$2325	\$2395	\$2295
310-4-2-F-12D-LCBMA	Fail safe	\$2395	\$2345	\$2345	\$2325	\$2395	\$2295
310-4-2-F-24D-LCBMA	Fail safe	\$2395	\$2345	\$2345	\$2325	\$2395	\$2295

Folger Adam 310-4-3 Electric Strike for Surface Vertical Rods

MODEL	DESCRIPTION	605	606	612	613E	629	630
310-4-3-12D		\$2125	\$2075	\$2075	\$2055	\$2125	\$2025
310-4-3-24D		\$2125	\$2075	\$2075	\$2055	\$2125	\$2025
310-4-3-F-12D	Fail safe	\$2125	\$2075	\$2075	\$2055	\$2125	\$2025
310-4-3-F-24D	Fail safe	\$2125	\$2075	\$2075	\$2055	\$2125	\$2025
310-4-3-12D-LCBMA		\$2487	\$2437	\$2437	\$2417	\$2487	\$2387
310-4-3-24D-LCBMA		\$2487	\$2437	\$2437	\$2417	\$2487	\$2387
310-4-3-F-12D-LCBMA	Fail safe	\$2487	\$2437	\$2437	\$2417	\$2487	\$2387
310-4-3-F-24D-LCBMA	Fail safe	\$2487	\$2437	\$2437	\$2417	\$2487	\$2387

Folger Adam 310-4-30 Electric Strike for Surface Vertical Rods

MODEL	DESCRIPTION	605	606	612	613E	629	630
310-4-30-12D		\$2125	\$2075	\$2075	\$2055	\$2125	\$2025
310-4-30-24D		\$2125	\$2075	\$2075	\$2055	\$2125	\$2025
310-4-30-F-12D	Fail safe	\$2125	\$2075	\$2075	\$2055	\$2125	\$2025
310-4-30-F-24D	Fail safe	\$2125	\$2075	\$2075	\$2055	\$2125	\$2025
310-4-30-12D-LCBMA		\$2487	\$2437	\$2437	\$2417	\$2487	\$2387
310-4-30-24D-LCBMA		\$2487	\$2437	\$2437	\$2417	\$2487	\$2387
310-4-30-F-12D-LCBMA	Fail safe	\$2487	\$2437	\$2437	\$2417	\$2487	\$2387
310-4-30-F-24D-LCBMA	Fail safe	\$2487	\$2437	\$2437	\$2417	\$2487	\$2387



INSTALLATION NOTE: Double-door models are available with four different center-to-center dimensions between latchbolt keepers. Keepers are wide enough to compensate for vertical rod exit bolts, which may be as much as 3/8" (10 mm) off center-to-center dimension, either way. When using an electric strike in conjunction with a vertical rod exit device, it is necessary that:

1. The bottom rod of the exit device be removed or made inoperative
2. The latchbolt of the exit device be the "Pullman" or beveled type
3. The latchbolt be free-latching and remain projected while the door is open. Mechanisms that hold the latchbolt retracted while the door is open, and automatically release it when the door is closed, must be removed or made inoperative.

Faceplates

MODEL	605	606	612	613E	629	630
FP-310-4-1	\$644	\$594	\$594	\$574	\$644	\$544

Faceplates

MODEL	605	606	612	613E	629	630
FP-310-4-2	\$644	\$594	\$594	\$574	\$644	\$544

Faceplates

MODEL	605	606	612	613E	630
FP-310-4-3	\$738	\$688	\$688	\$668	\$638

Faceplates

MODEL	605	606	612	613E	630
FP-310-4-30	\$738	\$688	\$688	\$668	\$638

How to Order

PREFIX	SERIES	FINISH
FP	- 310-4-X	- 630
FACEPLATE ONLY		
FP Faceplate	1 For use with vertical rod spacing between 4" and 4-3/4" 2 For use with vertical rod spacing between 4-5/8" and 5-3/8" 30 For use with vertical rod spacing between 2-5/8" and 3-3/8"	605 Bright Brass 606 Satin Brass 612 Satin Bronze 613E Dark Oxidized Satin Bronze Powder 629 Bright Stainless Steel 630 Satin Stainless Steel

How to Order Specify quantity and the following information. Order related products separately.

SERIES	FAIL SAFE/SECURE	VOLTAGE	FINISH	OPTION(S)
310-4-X	F	- 24D	- 612	-LCBMA
ROD SPACING				
1 For use with vertical rod spacing between 4" and 4-3/4"	(blank) Fail Secure (Standard)	12D 12 Volt	605 Bright Brass	LCBMA Latchbolt & locking cam monitor with auxiliary switch
2 For use with vertical rod spacing between 4-5/8" and 5-3/8"		24D 24 Volt	606 Satin Brass	
3 For use with vertical rod spacing between 5-1/4" and 6"	F Fail Safe		612 Satin Bronze	
30 For use with vertical rod spacing between 2-5/8" and 3-3/8"			613E Dark Oxidized Satin Bronze Powder	
			629 Bright Stainless Steel	
			630 Satin Stainless Steel	



Folger Adam 310-6-1 Electric Strike for Concealed Vertical Rods

MODEL	DESCRIPTION	612	627
310-6-1-12D		\$2271	\$1950
310-6-1-24D		\$2271	\$1950
310-6-1-F-12D	Fail safe	\$2271	\$1950
310-6-1-F-24	Fail safe	\$2271	\$1950
310-6-1-12D-LCBMA		\$2654	\$2332
310-6-1-24D-LCBMA		\$2654	\$2332
310-6-1-F-12D-LCBMA	Fail safe	\$2654	\$2332
310-6-1-F-24D-LCBMA	Fail safe	\$2654	\$2332

Folger Adam 310-6-2 Electric Strike for Concealed Vertical Rods

MODEL	DESCRIPTION	612	627
310-6-2-12D		\$2271	\$1950
310-6-2-24D		\$2271	\$1950
310-6-2-F-12D	Fail safe	\$2271	\$1950
310-6-2-F-24D	Fail safe	\$2271	\$1950
310-6-2-12D-LCBMA		\$2654	\$2332
310-6-2-24D-LCBMA		\$2654	\$2332
310-6-2-F-12D-LCBMA	Fail safe	\$2654	\$2332
310-6-2-F-24D-LCBMA	Fail safe	\$2654	\$2332

Folger Adam 310-6-3 Electric Strike for Concealed Vertical Rods

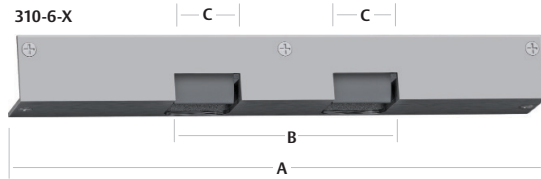
MODEL	DESCRIPTION	612	627
310-6-3-12D		\$2271	\$1950
310-6-3-24D		\$2271	\$1950
310-6-3-F-12D	Fail safe	\$2271	\$1950
310-6-3-F-24D	Fail safe	\$2271	\$1950
310-6-3-12D-LCBMA		\$2654	\$2332
310-6-3-24D-LCBMA		\$2654	\$2332
310-6-3-F-12D-LCBMA	Fail safe	\$2654	\$2332
310-6-3-F-24D-LCBMA	Fail safe	\$2654	\$2332

Folger Adam 310-6-8 Electric Strike for Concealed Vertical Rods

MODEL	DESCRIPTION	612	627
310-6-8-12D		\$1591	\$1170
310-6-8-24D		\$1591	\$1170
310-6-8-F-12D	Fail safe	\$1591	\$1170
310-6-8-F-24D	Fail safe	\$1591	\$1170
310-6-8-12D-LCBMA		\$1974	\$1552
310-6-8-24D-LCBMA		\$1974	\$1552
310-6-8-F-12D-LCBMA	Fail safe	\$1974	\$1552
310-6-8-F-24D-LCBMA	Fail safe	\$1974	\$1552

Folger Adam 310-6-30 Electric Strike for Concealed Vertical Rods

MODEL	DESCRIPTION	612	627
310-6-30-12D		\$2271	\$1950
310-6-30-24D		\$2271	\$1950
310-6-30-F-12D	Fail safe	\$2271	\$1950
310-6-30-F-24D	Fail safe	\$2271	\$1950
310-6-30-12D-LCBMA		\$2654	\$2332
310-6-30-24D-LCBMA		\$2654	\$2332
310-6-30-F-12D-LCBMA	Fail safe	\$2654	\$2332
310-6-30-F-24D-LCBMA	Fail safe	\$2654	\$2332



	A	B	C	D	E
310-6-1	14-1/2" [368.3mm]	4-3/8" [111.125mm]	1-13/16" [46mm]	1-3/4" [44.45mm]	1-3/4" [44.45mm]
310-6-2	15-1/8" [384.2mm]	5" [127mm]	1-13/16" [46mm]	1-3/4" [44.45mm]	1-3/4" [44.45mm]
310-6-3	15-3/4" [400.05mm]	5-5/8" [142.8mm]	1-13/16" [46mm]	1-3/4" [44.45mm]	1-3/4" [44.45mm]
310-6-30	13-1/8" [333.4mm]	3" [76.2mm]	1-13/16" [46mm]	1-3/4" [44.45mm]	1-3/4" [44.45mm]
310-6-8	10-7/8" [276.3mm]		1-13/16" [46mm]	1-3/4" [44.45mm]	1-3/4" [44.45mm]

INSTALLATION NOTE: Double-door models are available with four different center-to-center dimensions between latchbolt keepers. Keepers are wide enough to compensate for vertical rod exit bolts, which may be as much as 3/8" (10 mm) off center-to-center dimension, either way. When using an electric strike in conjunction with a vertical rod exit device, it is necessary that:

1. The bottom rod of the exit device be removed or made inoperative
2. The latchbolt of the exit device be the "Pullman" or beveled type
3. The latchbolt be free-latching and remain projected while the door is open. Mechanisms that hold the latchbolt retracted while the door is open, and automatically release it when the door is closed, must be removed or made inoperative.

How to Orders & Faceplates on next page

Folger Adam 310-6-1— 310-6-30 Electric Strikes for Concealed Vertical Rods **Continued**



How to Order *Specify quantity and the following information. Order related products separately.*

SERIES	KEEPER STYLE	FAIL SAFE/SECURE	VOLTAGE	FINISH	OPTION(S)
310-6-X	(PK)	- F	- 24D	- 627	- LCBMA
ROD SPACING					
1 For use with vertical rod spacing between 4" and 4-3/4"	(PK) For use with 3/4" Pullman style latchbolts	(blank) Fail Secure (Standard)	12D 12 Volt	612 Satin Bronze	LCBMA Latchbolt & locking cam monitor with auxiliary switch
2 For use with vertical rod spacing between 4-5/8" and 5-3/8"			24D 24 Volt		
3 For use with vertical rod spacing between 5-1/4" and 6"		F Fail Safe	627 Satin Aluminum		
8 For only the active leaf of a pair of doors					
30 For use with vertical rod spacing between 2-5/8" and 3-3/8"					

Faceplates

MODEL	612	627
FP-310-6-1	\$888	\$560

Faceplates

MODEL	612	627
FP-310-6-2	\$888	\$560

Faceplates

MODEL	612	627
FP-310-6-3	\$888	\$560

Faceplates

MODEL	612	627
FP-310-6-8	\$888	\$560

Faceplates

MODEL	612	627
FP-310-6-30	\$888	\$560

How to Order

PREFIX	SERIES	KEEPER STYLE	FINISH
FP	- 310-6-X	(PK)	- 612
FACEPLATE ONLY			
FP Faceplate	1 For use with vertical rod spacing between 4" and 4-3/4" 2 For use with vertical rod spacing between 4-5/8" and 5-3/8" 3 For use with vertical rod spacing between 5-1/4" and 6" 8 For only the active leaf of a pair of doors 30 For use with vertical rod spacing between 2-5/8" and 3-3/8"	(PK) For use with 3/4" Pullman style latchbolts	612 Satin Bronze 627 Satin Aluminum

Folger Adam SB:310-1-1 Electric Strike Bodies

MODEL	DESCRIPTION	630
SB:310-1-1-12D		\$1302
SB:310-1-1-24D		\$1302
SB:310-1-1-F-12D	Fail safe	\$1302
SB:310-1-1-F-24D	Fail safe	\$1302
SB:310-1-1-12D-LCBMA		\$1693
SB:310-1-1-24D-LCBMA		\$1693
SB:310-1-1-F-12D-LCBMA	Fail safe	\$1693
SB:310-1-1-F-24D-LCBMA	Fail safe	\$1693

Folger Adam SB:310-1-2 Electric Strike Bodies

MODEL	DESCRIPTION	630
SB:310-1-2-12D		\$1302
SB:310-1-2-24D		\$1302
SB:310-1-2-F-12D	Fail safe	\$1302
SB:310-1-2-F-24D	Fail safe	\$1302
SB:310-1-2-12D-LCBMA		\$1693
SB:310-1-2-24D-LCBMA		\$1693
SB:310-1-2-F-12D-LCBMA	Fail safe	\$1693
SB:310-1-2-F-24D-LCBMA	Fail safe	\$1693

Folger Adam SB:310-1-3 Electric Strike Bodies

MODEL	DESCRIPTION	630
SB:310-1-3-12D		\$1302
SB:310-1-3-24D		\$1302
SB:310-1-3-F-12D	Fail safe	\$1302
SB:310-1-3-F-24D	Fail safe	\$1302
SB:310-1-3-12D-LCBMA		\$1693
SB:310-1-3-24D-LCBMA		\$1693
SB:310-1-3-F-12D-LCBMA	Fail safe	\$1693
SB:310-1-3-F-24D-LCBMA	Fail safe	\$1693

Folger Adam SB:310-1-30 Electric Strike Bodies

MODEL	DESCRIPTION	630
SB:310-1-30-12D		\$1302
SB:310-1-30-24D		\$1302
SB:310-1-30-F-12D	Fail safe	\$1302
SB:310-1-30-F-24D	Fail safe	\$1302
SB:310-1-30-12D-LCBMA		\$1693
SB:310-1-30-24D-LCBMA		\$1693
SB:310-1-30-F-24D-LCBMA	Fail safe	\$1693
SB:310-1-30-F-12D-LCBMA	Fail safe	\$1693

How to Order Specify quantity and the following information. Order related products separately.

PREFIX	SERIES	ROD SPACING	KEEPER STYLE	FAIL SAFE/SECURE	VOLTAGE	OPTION(S)
SB	- 310-1	- 1	(PK)	- F	- 24D	- LCBMA
STRIKE BODY ONLY						
SB Strike Body	310-1 Strike Body Only	1 For use with vertical rod spacing between 4" and 4-3/4" 2 For use with vertical rod spacing between 4-5/8" and 5-3/8" 3 For use with vertical rod spacing between 5-1/4" and 6" 30 For use with vertical rod spacing between 2-5/8" and 3-3/8"	(PK) For use with Pullman style latchbolts	(blank) Fail Secure (Standard) F Fail Safe	12D 12 Volt 24D 24 Volt	LCBMA Latchbolt & locking cam monitor with auxiliary switch

Folger Adam 712 Electric Strike for Latchbolt Locks

MODEL	DESCRIPTION	605	606	612	613E	629	630
712-12D		\$1093	\$1048	\$1048	\$998	\$1093	\$933
712-24D		\$1093	\$1048	\$1048	\$998	\$1093	\$933
712-F-12D	Fail safe	\$1093	\$1048	\$1048	\$998	\$1093	\$933
712-F-24D	Fail safe	\$1093	\$1048	\$1048	\$998	\$1093	\$933
712-12D-LBMLCM		\$1300	\$1255	\$1255	\$1205	\$1300	\$1140
712-24D-LBMLCM		\$1300	\$1255	\$1255	\$1205	\$1300	\$1140
712-F-12D-LBMLCM	Fail safe	\$1300	\$1255	\$1255	\$1205	\$1300	\$1140
712-F-24D-LBMLCM	Fail safe	\$1300	\$1255	\$1255	\$1205	\$1300	\$1140

Folger Adam 712-75 Electric Strike for Latchbolt Locks

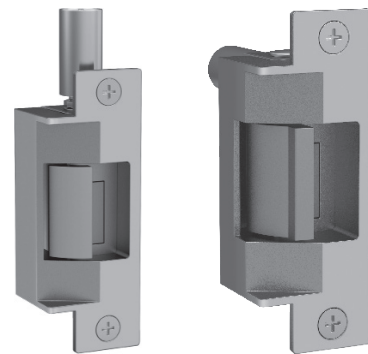
MODEL	DESCRIPTION	605	606	612	613E	629	630
712-75-12D		\$1131	\$1086	\$1086	\$1036	\$1131	\$971
712-75-24D		\$1131	\$1086	\$1086	\$1036	\$1131	\$971
712-75-F-12D	Fail safe	\$1131	\$1086	\$1086	\$1036	\$1131	\$971
712-75-F-24D	Fail safe	\$1131	\$1086	\$1086	\$1036	\$1131	\$971
712-75-12D-LBMLCM		\$1339	\$1294	\$1294	\$1244	\$1339	\$1179
712-75-24D-LBMLCM		\$1339	\$1294	\$1294	\$1244	\$1339	\$1179
712-75-F-12D-LBMLCM	Fail safe	\$1339	\$1294	\$1294	\$1244	\$1339	\$1179
712-75-F-24D-LBMLCM	Fail safe	\$1339	\$1294	\$1294	\$1244	\$1339	\$1179

Folger Adam 732 Electric Strike for Latchbolt Locks

MODEL	DESCRIPTION	605	606	612	613E	629	630
732-12D		\$1093	\$1048	\$1048	\$998	\$1093	\$933
732-24D		\$1093	\$1048	\$1048	\$998	\$1093	\$933
732-F-12D	Fail safe	\$1093	\$1048	\$1048	\$998	\$1093	\$933
732-F-24D	Fail safe	\$1093	\$1048	\$1048	\$998	\$1093	\$933
732-12D-LBMLCM		\$1300	\$1255	\$1255	\$1205	\$1300	\$1140
732-24D-LBMLCM		\$1300	\$1255	\$1255	\$1205	\$1300	\$1140
732-F-12D-LBMLCM	Fail safe	\$1300	\$1255	\$1255	\$1205	\$1300	\$1140
732-F-24D-LBMLCM	Fail safe	\$1300	\$1255	\$1255	\$1205	\$1300	\$1140

Folger Adam 732-75 Electric Strike for Latchbolt Locks

MODEL	DESCRIPTION	605	606	612	613E	629	630
732-75-12D		\$1131	\$1086	\$1086	\$1036	\$1131	\$971
732-75-24D		\$1131	\$1086	\$1086	\$1036	\$1131	\$971
732-75-F-12D	Fail safe	\$1131	\$1086	\$1086	\$1036	\$1131	\$971
732-75-F-24D	Fail safe	\$1131	\$1086	\$1086	\$1036	\$1131	\$971
732-75-12D-LBMLCM		\$1339	\$1294	\$1294	\$1244	\$1339	\$1179
732-75-24D-LBMLCM		\$1339	\$1294	\$1294	\$1244	\$1339	\$1179
732-75-F-12D-LBMLCM	Fail safe	\$1339	\$1294	\$1294	\$1244	\$1339	\$1179
732-75-F-24D-LBMLCM	Fail safe	\$1339	\$1294	\$1294	\$1244	\$1339	\$1179



700 & 742 Series | LBMLCM: When using LBMLCM with a SARGENT 78/8200 Series or BEST 40 Series Mortise Lock, a 1/2" or 5/8" keeper latchbolt detection will be dependent on the door gap in order to ensure functionality. Consult customer support regarding use with other manufacturers.

712-75, 732-75 and 742-75: The LBMLCM option is compatible with SARGENT 78/8200 Series or BEST 40 Series 3/4" throw mortise lock latchbolts in hollow metal and wood frame applications. Monitoring capabilities are dependent on a maximum 1/8" door gap in order to ensure functionality. Consult customer support regarding use with other manufacturers.

Faceplates

MODEL	605	606	612	613E	629	630
FP-712	\$370	\$324	\$324	\$271	\$370	\$206
FP-712-75	\$406	\$360	\$360	\$307	\$406	\$242

How to Order

PREFIX	SERIES	FINISH
FP	- 732-75	- 613E
FACEPLATE ONLY		
FP Faceplate	712 1/2" PK keeper standard; Hollow metal frames, for up to a 5/8" throw latchbolt 712-75 3/4" PK keeper standard; Hollow metal frames, for up to a 3/4" throw latchbolt without deadbolt 732 PK keeper standard; Wood frames, for up to a 5/8" throw latchbolt 732-75 3/4" PK keeper standard; Wood frames, for up to a 3/4" throw latchbolt without deadbolt	605 Bright Brass 606 Satin Brass 612 Satin Bronze 613E Dark Oxidized Satin Bronze Powder 629 Bright Stainless Steel 630 Satin Stainless Steel

How to Order *Specify quantity and the following information. Order related products separately.*

SOLENOID ORIENTATION	KEEPER STYLE	FAIL SAFE/SECURE	VOLTAGE	FINISH	OPTION(S)
712		- F	- 24D	- 630	- LBMLCM
712 Vertical for hollow metal frames	(blank) 1/2" PK Keeper for up to 5/8" latchbolt	(blank) Fail Secure (Standard)	12D 12 Volt 24D 24 Volt	605 Bright Brass 606 Satin Brass 612 Satin Bronze 613E Dark Oxidized Satin Bronze Powder 629 Bright Stainless Steel 630 Satin Stainless Steel	LBMLCM Latchbolt & locking cam monitor
732 Horizontal for wood and concrete frames	-75 3/4 PK keeper for up to a 3/4" throw latchbolt without deadbolt	F Fail Safe			

Folger Adam SB:710 Electric Strike Bodies

MODEL	DESCRIPTION	630
SB:710-12D		\$734
SB:710-24D		\$734
SB:710-F-12D	Fail safe	\$734
SB:710-F-24D	Fail safe	\$734
SB:710-12D-LBMLCM		\$938
SB:710-24D-LBMLCM		\$938
SB:710-F-12D-LBMLCM	Fail safe	\$938
SB:710-F-24D-LBMLCM	Fail safe	\$938

Folger Adam SB:710-75 Electric Strike Bodies

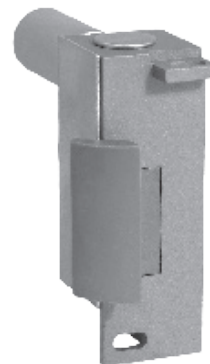
MODEL	DESCRIPTION	630
SB:710-75-12D		\$734
SB:710-75-24D		\$734
SB:710-75-F-12D	Fail safe	\$734
SB:710-75-F-24D	Fail safe	\$734
SB:710-75-12D-LBMLCM		\$938
SB:710-75-24D-LBMLCM		\$938
SB:710-75-F-12D-LBMLCM	Fail safe	\$938
SB:710-75-F-24D-LBMLCM	Fail safe	\$938

Folger Adam SB:730 Electric Strike Bodies

MODEL	DESCRIPTION	630
SB:730-12D		\$734
SB:730-24D		\$734
SB:730-F-12D	Fail safe	\$734
SB:730-F-24D	Fail safe	\$734
SB:730-12D-LBMLCM		\$938
SB:730-24D-LBMLCM		\$938
SB:730-F-12D-LBMLCM	Fail safe	\$938
SB:730-F-24D-LBMLCM	Fail safe	\$938

Folger Adam SB:730-75 Electric Strike Bodies

MODEL	DESCRIPTION	630
SB:730-75-12D		\$734
SB:730-75-24D		\$734
SB:730-75-F-12D	Fail safe	\$734
SB:730-75-F-24D	Fail safe	\$734
SB:730-75-12D-LBMLCM		\$938
SB:730-75-24D-LBMLCM		\$938
SB:730-75-F-12D-LBMLCM	Fail safe	\$938
SB:730-75-F-24D-LBMLCM	Fail safe	\$938



INSTALLATION NOTE: Double-door models are available with four different center-to-center dimensions between latchbolt keepers. Keepers are wide enough to compensate for vertical rod exit bolts, which may be as much as 3/8" (10 mm) off center-to-center dimension, either way. When using an electric strike in conjunction with a vertical rod exit device, it is necessary that:

1. The bottom rod of the exit device be removed or made inoperative.
2. The latchbolt of the exit device be the "Pullman" or beveled type.
3. The latchbolt be free-latching and remain projected while the door is open. Mechanisms that hold the latchbolt retracted while the door is open, and automatically release it when the door is closed, must be removed or made inoperative.

How to Order *Specify quantity and the following information. Order related products separately.*

PREFIX	SOLENOID ORIENTATION	KEEPER STYLE	FAIL SAFE/SECURE	VOLTAGE	OPTION(S)
SB	710		- F	- 24D	- LBMLCM
SB Strike Body Only	<p>710 Vertical for hollow metal frames</p> <p>730 Horizontal for wood and concrete frames</p>	<p>(blank) 1/2" PK Keeper for up to 5/8" latchbolt</p> <p>-75 3/4" PK keeper for up to a 3/4" throw latchbolt without deadbolt</p>	<p>(blank) Fail Secure (Standard)</p> <p>F Fail Safe</p>	<p>12D 12 Volt</p> <p>24D 24 Volt</p>	<p>LBMLCM Latchbolt & locking cam monitor</p>

Folger Adam 742-75 Complete Pacs for Latchbolt Locks

MODEL	DESCRIPTION	605	606	612	613E	629	630
742-75-12D		\$1336	\$1244	\$1244	\$1126	\$1336	\$1016
742-75-24D		\$1336	\$1244	\$1244	\$1126	\$1336	\$1016
742-75-F-12D	Fail safe	\$1336	\$1244	\$1244	\$1126	\$1336	\$1016
742-75-F-24D	Fail safe	\$1336	\$1244	\$1244	\$1126	\$1336	\$1016
742-75-12D-LBMLCM		\$1540	\$1448	\$1448	\$1330	\$1540	\$1220
742-75-24D-LBMLCM		\$1540	\$1448	\$1448	\$1330	\$1540	\$1220
742-75-F-12D-LBMLCM	Fail safe	\$1540	\$1448	\$1448	\$1330	\$1540	\$1220
742-75-F-24D-LBMLCM	Fail safe	\$1540	\$1448	\$1448	\$1330	\$1540	\$1220



How to Order Complete Pacs

Specify quantity and the following information. Order related products separately.

SERIES	FAIL SAFE/SECURE	VOLTAGE	FINISH	OPTION(S)
742-75	- F	- 12D	- 613E	- LBMLCM
SOLENOID ORIENTATION				
742-75 Vertical for hollow metal frames, up to 3/4" latchbolt without deadbolt	(blank) Fail Secure (Standard) F Fail Safe	12D 12 Volt 24D 24 Volt	605 Bright Brass 606 Satin Brass 612 Satin Bronze 613E Dark Oxidized Satin Bronze Powder 629 Bright Stainless Steel 630 Satin Stainless Steel	LBMLCM Latchbolt & locking cam monitor

Faceplates

MODEL	605	606	612	613E	629	630
FP-742	\$388	\$342	\$342	\$283	\$388	\$228

How to Order Faceplate Only

PREFIX	SERIES	FINISH
FP	- 742-75	- 630
FP Faceplate	742-75 Hollow metal frames, for up to a 3/4" throw latchbolt without deadbolt	605 Bright Brass 606 Satin Brass 612 Satin Bronze 613E Dark Oxidized Satin Bronze Powder 629 Bright Stainless Steel 630 Satin Stainless Steel

Folger Adam SB740-75 Electric Strike Bodies

MODEL	DESCRIPTION	630
SB:740-75-12D		\$788
SB:740-75-24D		\$788
SB:740-75-F-12D	Fail safe	\$788
SB:740-75-F-24D	Fail safe	\$788
SB:740-75-12D-LBMLCM		\$986
SB:740-75-24D-LBMLCM		\$986
SB:740-75-F-12D-LBMLCM	Fail safe	\$986
SB:740-75-F-24D-LBMLCM	Fail safe	\$986



How to Order

Specify quantity and the following information. Order related products separately.

PREFIX	SERIES	FAIL SAFE/SECURE	VOLTAGE	OPTION(S)
SB	740-75	—	- 24D	—
STRIKE BODY ONLY				
SB Strike Body	740-75	(blank) Fail Secure (Standard) F Fail Safe	12D 12 Volt 24D 24 Volt	LBMLCM Latchbolt & locking cam monitor

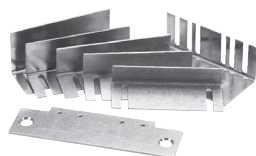
700 & 742 Series | LBMLCM: When using LBMLCM with a SARGENT 78/8200 Series or BEST 40 Series Mortise Lock, a 1/2" or 5/8" keeper latchbolt detection will be dependent on the door gap in order to ensure functionality. Consult customer support regarding use with other manufacturers.

712-75, 732-75 and 742-75: The LBMLCM option is compatible with SARGENT 78/8200 Series or BEST 40 Series 3/4" throw mortise lock latchbolts in hollow metal and wood frame applications. Monitoring capabilities are dependent on a maximum 1/8" door gap in order to ensure functionality. Consult customer support regarding use with other manufacturers.

Electric Strike Accessories

Electric Strike Accessories

ITEM	DESCRIPTION	PRICE
HESCUT-MTK	For installing the 1006, 1500, 1600, 4500, 5000, 5200, 5300, 7000, and 7501 electric strikes (4-7/8" ANSI jamb preparations only)	\$100
9000-MTK	Metal template installation kit	\$95
SMB	Surface mounting box	\$250
150	Stainless steel. Installed at the edge of the door to cover the lock and electric strike. Available in 626 finish only	\$104
152	Mount inside hollow metal, wood and aluminum jambs	\$30
157	Torx screws	\$16
157D	Tamper-Resistant Torx R20 insert bit	\$47
310-2-3	Available for the Folger Adam 300 Series electric strike in standard 630 finish. Torx screws included	\$349
2001-1	Converts AC to unfiltered DC. Rated 35 V, 2 Amp. Not recommended for 1006 Electric Strike	\$43
2001M	Converts AC to unfiltered DC. Rated 35 V, 1 Amp. Includes MOV and self-resettable fuse. Not recommended for 1006 Electric Strike.	\$80
2004M	Adapter between existing HES electric strikes and ElectroLynx® connectors	\$46
2005M3	Used with HES electric strikes, the 2005M3 SMART Pac III is an in-line power controller able to receive input voltages from 12 to 32V AC or DC.	\$123
2006M	Audible operation indicator at 24VDC, 75db at 11-3/4"	\$62
2007M	With 4" wire leads	\$28



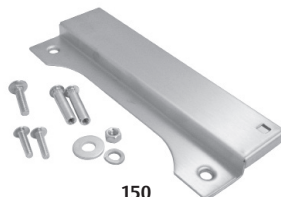
HESCUT-MTK



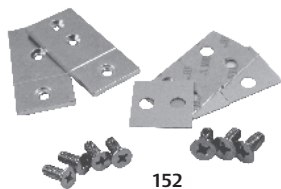
9000-MTK



SMB



150



152



157



157D



310-2-3



2001-1



2001M



2004M



2005M3



2006M



2007M

Cabinet Locks

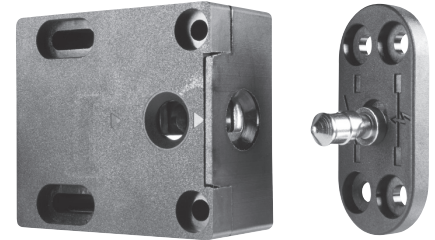
610 Multi-Purpose Electromechanical Lock

ITEM	DESCRIPTION	PRICE
610	Standard — No Monitoring	\$152
610LM	Locked State Monitoring	\$221

How to Order

Specify quantity and the following information. Order related products separately.

SERIES	OPTION(S)
610	– LM
610 Cabinet Lock	(blank) No Monitoring LM Locked State Monitoring



660 Multi-Purpose Electromechanical Lock

MODEL	BLK
660	\$179
660-LBSM	\$222
660-LBSM-20PK	\$4447
660-Preload	\$265
660-LBSM-Preload	\$309

Accessories

ITEM	DESCRIPTION	PRICE
660-KO	Key override for 660 Series Cabinet Lock	\$96

How to Order

Specify quantity and the following information. Order related products separately.

SERIES	VOLTAGE	OPTION(S)
660	– 12V	– LBSM – Preload
660 Cabinet Lock	12V 12 Volt 24V 24 Volt	(blank) No preload, no monitoring Preload Up to 15 lbs LBSM Locked state monitoring LBSM-20PK Locked state monitoring 20 pack LBSM-Preload Locked state monitoring with Preload



KP20 Series Cabinet Lock

MODEL	DESCRIPTION	BLK
KP20	Stand-alone Keypad Cabinet Lock	\$140



KS-M Mechanical Server Cabinet Lock

ITEM	DESCRIPTION	PRICE
KS-M-B	KS-M Mechanical Server Cabinet Lock with No Cylinder	\$130
KS-M-B-K1	KS-M Mechanical Server Cabinet Lock with MEDECO X4 SFIC (DGV Commercial Keyway) with 2 Keys (1 Control, 1 User)	\$230



KS200 Integrated Wired, Wiegand Access Control Server Cabinet Lock

ITEM	DESCRIPTION	PRICE
KS200-S-IPS-B	KS200-S Integrated Wired, Wiegand Server Cabinet Lock With No Cylinder and HID multiCLASS SE Card Reader, HID NFC Mobile Access Enabled	\$685
KS200-S-IPS-B-BC	KS200-S Integrated Wired, Wiegand Server Cabinet Lock With Blank Plastic SFIC Core and HID multiCLASS SE Card Reader, HID NFC Mobile Access Enabled	\$700
KS200-S-IPS-B-K1	KS200-S Integrated Wired, Wiegand Server Cabinet Lock With MEDECO X4 SFIC (DGV Commercial Keyway) with 2 Keys (1 Control, 1 User) and HID multiCLASS SE Card Reader, HID NFC Mobile Access Enabled	\$785
KS200-S-IPV040-B	KS200-S Integrated Wired, Wiegand Server Cabinet Lock With No Cylinder and HID SE PIV-I 40 Bit Card Reader, HID NFC Mobile Access Enabled	\$685
KS200-S-IPV040-B-BC	KS200-S Integrated Wired, Wiegand Server Cabinet Lock With Blank Plastic SFIC Core and HID SE PIV-I 40 Bit Card Reader, HID NFC Mobile Access Enabled	\$700
KS200-S-IPV040-B-K1	KS200-S Integrated Wired, Wiegand Server Cabinet Lock With MEDECO X4 SFIC (DGV Commercial Keyway) with 2 Keys (1 Control, 1 User) and HID SE PIV-I 40 Bit Card Reader, HID NFC Mobile Access Enabled	\$785
KS200-S-IPV064-B	KS200-S Integrated Wired, Wiegand Server Cabinet Lock With No Cylinder and HID SE PIV-I 64 Bit Card Reader, HID NFC Mobile Access Enabled	\$685
KS200-S-IPV064-B-BC	KS200-S Integrated Wired, Wiegand Server Cabinet Lock With Blank Plastic SFIC Core and HID SE PIV-I 64 Bit Card Reader, HID NFC Mobile Access Enabled	\$700
KS200-S-IPV064-B-K1	KS200-S Integrated Wired, Wiegand Server Cabinet Lock With MEDECO X4 SFIC (DGV Commercial Keyway) with 2 Keys (1 Control, 1 User) and HID SE PIV-I 64 Bit Card Reader, HID NFC Mobile Access Enabled	\$785
KS200-S-IPV075-B	KS200-S Integrated Wired, Wiegand Server Cabinet Lock With No Cylinder and HID SE PIV-I 75 Bit Card Reader, HID NFC Mobile Access Enabled	\$685
KS200-S-IPV075-B-BC	KS200-S Integrated Wired, Wiegand Server Cabinet Lock With Blank Plastic SFIC Core and HID SE PIV-I 75 Bit Card Reader, HID NFC Mobile Access Enabled	\$700
KS200-S-IPV075-B-K1	KS200-S Integrated Wired, Wiegand Server Cabinet Lock With MEDECO X4 SFIC (DGV Commercial Keyway) with 2 Keys (1 Control, 1 User) and HID SE PIV-I 75 Bit Card Reader, HID NFC Mobile Access Enabled	\$785
KS200-S-IPV128-B	KS200-S Integrated Wired, Wiegand Server Cabinet Lock With No Cylinder and HID SE PIV-I 128 Bit Card Reader, HID NFC Mobile Access Enabled	\$685
KS200-S-IPV128-B-BC	KS200-S Integrated Wired, Wiegand Server Cabinet Lock With Blank Plastic SFIC Core and HID SE PIV-I 128 Bit Card Reader, HID NFC Mobile Access Enabled	\$700
KS200-S-IPV128-B-K1	KS200-S Integrated Wired, Wiegand Server Cabinet Lock With MEDECO X4 SFIC (DGV Commercial Keyway) with 2 Keys (1 Control, 1 User) and HID SE PIV-I 128 Bit Card Reader, HID NFC Mobile Access Enabled	\$785
KS200-S-IPV200-B	KS200-S Integrated Wired, Wiegand Server Cabinet Lock With No Cylinder and HID SE PIV-I 200 Bit Card Reader, HID NFC Mobile Access Enabled	\$685
KS200-S-IPV200-B-BC	KS200-S Integrated Wired, Wiegand Server Cabinet Lock With Blank Plastic SFIC Core and HID SE PIV-I 200 Bit Card Reader, HID NFC Mobile Access Enabled	\$700
KS200-S-IPV200-B-K1	KS200-S Integrated Wired, Wiegand Server Cabinet Lock With MEDECO X4 SFIC (DGV Commercial Keyway) with 2 Keys (1 Control, 1 User) and HID SE PIV-I 200 Bit Card Reader, HID NFC Mobile Access Enabled	\$785
KS200-S-IPEXXXXX-B	KS200-S Integrated Wired, Wiegand Server Cabinet Lock with No Cylinder and HID iCLASS Elite SE Card Reader, HID BLE & NFC Mobile Access Enabled	\$715
KS200-S-IPEXXXXX-B-BC	KS200-S Integrated Wired, Wiegand Server Cabinet Lock with Black Plastic SFIC Core and HID iCLASS Elite SE Card Reader, HID BLE & NFC Mobile Access Enabled	\$730
KS200-S-IPEXXXXX-B-K1	KS200-S Integrated Wired, Wiegand Server Cabinet Lock with MEDECO X4 SFIC (DGV Commercial Keyway) with 2 Keys and HID iCLASS Elite SE Card Reader, HID BLE & NFC Mobile Access Enabled	\$815



KS210 Integrated Wired, RS-485 OSDP Access Control Server Cabinet Lock

ITEM	DESCRIPTION	PRICE
KS210-D-IPEXXXXX-B	KS210-D Integrated Wired, OSDP Server Cabinet Lock with No Cylinder and HID iCLASS Elite SE Card Reader, HID BLE & NFC Mobile Access Enabled	\$795
KS210-D-IPEXXXXX-B-BC	KS210-D Integrated Wired, OSDP Server Cabinet Lock with Black Plastic SFIC Core and HID iCLASS Elite SE Card Reader, HID BLE & NFC Mobile Access Enabled	\$810
KS210-D-IPEXXXXX-B-K1	KS210-D Integrated Wired, OSDP Server Cabinet Lock with MEDECO X4 SFIC (DGV Commercial Keyway) with 2 Keys and HID iCLASS Elite SE Card Reader, HID BLE & NFC Mobile Access Enabled	\$895
KS210-D-IPS-B	KS210-D Integrated Wired, OSDP Server Cabinet Lock With No Cylinder and HID multiCLASS SE Card Reader, HID BLE & NFC Mobile Access Enabled	\$765
KS210-D-IPS-B-BC	KS210-D Integrated Wired, OSDP Server Cabinet Lock With Blank Plastic SFIC Core and HID multiCLASS SE Card Reader, HID BLE & NFC Mobile Access Enabled	\$780
KS210-D-IPS-B-K1	KS210-D Integrated Wired, OSDP Server Cabinet Lock With MEDECO X4 SFIC (DGV Commercial Keyway) with 2 Keys (1 Control, 1 User) and HID multiCLASS SE Card Reader, HID BLE & NFC Mobile Access Enabled	\$865
KS210-D-IPV040-B	KS210-D Integrated Wired, OSDP Server Cabinet Lock With No Cylinder and HID SE PIV-I 40 Bit Card Reader, HID BLE & NFC Mobile Access Enabled	\$765
KS210-D-IPV040-B-BC	KS210-D Integrated Wired, OSDP Server Cabinet Lock With Blank Plastic SFIC Core and HID SE PIV-I 40 Bit Card Reader, HID BLE & NFC Mobile Access Enabled	\$780
KS210-D-IPV040-B-K1	KS210-D Integrated Wired, OSDP Server Cabinet Lock With MEDECO X4 SFIC (DGV Commercial Keyway) with 2 Keys (1 Control, 1 User) and HID SE PIV-I 40 Bit Card Reader, HID BLE & NFC Mobile Access Enabled	\$865
KS210-D-IPV064-B	KS210-D Integrated Wired, OSDP Server Cabinet Lock With No Cylinder and HID SE PIV-I 64 Bit Card Reader, HID BLE & NFC Mobile Access Enabled	\$765
KS210-D-IPV064-B-BC	KS210-D Integrated Wired, OSDP Server Cabinet Lock With Blank Plastic SFIC Core and HID SE PIV-I 64 Bit Card Reader, HID BLE & NFC Mobile Access Enabled	\$780
KS210-D-IPV064-B-K1	KS210-D Integrated Wired, OSDP Server Cabinet Lock With MEDECO X4 SFIC (DGV Commercial Keyway) with 2 Keys (1 Control, 1 User) and HID SE PIV-I 64 Bit Card Reader, HID BLE & NFC Mobile Access Enabled	\$865
KS210-D-IPV075-B	KS210-D Integrated Wired, OSDP Server Cabinet Lock With No Cylinder and HID SE PIV-I 75 Bit Card Reader, HID BLE & NFC Mobile Access Enabled	\$765
KS210-D-IPV075-B-BC	KS210-D Integrated Wired, OSDP Server Cabinet Lock With Blank Plastic SFIC Core and HID SE PIV-I 75 Bit Card Reader, HID BLE & NFC Mobile Access Enabled	\$780
KS210-D-IPV075-B-K1	KS210-D Integrated Wired, OSDP Server Cabinet Lock With MEDECO X4 SFIC (DGV Commercial Keyway) with 2 Keys (1 Control, 1 User) and HID SE PIV-I 75 Bit Card Reader, HID BLE & NFC Mobile Access Enabled	\$865
KS210-D-IPV128-B	KS210-D Integrated Wired, OSDP Server Cabinet Lock With No Cylinder and HID SE PIV-I 128 Bit Card Reader, HID BLE & NFC Mobile Access Enabled	\$765
KS210-D-IPV128-B-BC	KS210-D Integrated Wired, OSDP Server Cabinet Lock With Blank Plastic SFIC Core and HID SE PIV-I 128 Bit Card Reader, HID BLE & NFC Mobile Access Enabled	\$780
KS210-D-IPV128-B-K1	KS210-D Integrated Wired, OSDP Server Cabinet Lock With MEDECO X4 SFIC (DGV Commercial Keyway) with 2 Keys (1 Control, 1 User) and HID SE PIV-I 128 Bit Card Reader, HID BLE & NFC Mobile Access Enabled	\$865
KS210-D-IPV200-B	KS210-D Integrated Wired, OSDP Server Cabinet Lock With No Cylinder and HID SE PIV-I 200 Bit Card Reader, HID BLE & NFC Mobile Access Enabled	\$765
KS210-D-IPV200-B-BC	KS210-D Integrated Wired, OSDP Server Cabinet Lock With Blank Plastic SFIC Core and HID SE PIV-I 200 Bit Card Reader, HID BLE & NFC Mobile Access Enabled	\$780
KS210-D-IPV200-B-K1	KS210-D Integrated Wired, OSDP Server Cabinet Lock With MEDECO X4 SFIC (DGV Commercial Keyway) with 2 Keys (1 Control, 1 User) and HID SE PIV-I 200 Bit Card Reader, HID BLE & NFC Mobile Access Enabled	\$865



Accessories

KS-M, KS200 & KS210 Accessories

ITEM	DESCRIPTION	PRICE
CBL6-QC4	Lock Side Interface Cable: 6 Foot, 4 Conductor OSDP and Molex both ends	\$90
CBL6-QC12	Lock Side Interface Cable: 6 Foot, 12 Conductor and Molex both ends	\$75
CBL12-QC4	System Side Interface Cable: 12 Foot, 4 Conductor OSDP and Molex both ends	\$110
CBL12-QC12	System Side Interface Cable: 12 Foot, 12 Conductor and Molex one end, pinned one end	\$95
HSA-OSDP-DB	The OSDP distribution box is intended to be used with the KS210 4-Wire system to make installation quick and easy.	\$125
SFIC	KS Series MEDECO X4 SFIC Small Format Interchangeable Core (DGV Commercial Keyway) with 2 Keys (1 Control, 1 User)	\$100
SFIC-BC	KS Series SFIC Small Format Interchangeable Core Blank, Black Plastic Core	\$15
KS-DPS	KS Series Surface Mount DPS (external)	\$32
KS-CAM45	KS Series Locking Cam: 45MM—5	\$10
KS-CAM38	KS Series Locking Cam: 38MM—1	\$10

Warranties & Terms & Conditions

HES Warranties

We believe that the best products in the industry should be supported by our commitment to deliver the highest quality products and services. HES is proud to extend the most comprehensive no-fault, no-questions asked warranty coverage to all of our products and solutions. This is our expectation and commitment to you – our valued customer.



**SecuriCare
Warranty**

SecuriCare 10-year Warranty

Duration: Ten years from date of shipment.

Condition: Any reason including, but not limited to, installation error, vandalism or force majeure.

Replacement: Replacement product or equivalent shipped at HES expense via next day air freight in most cases.

Products Covered:

- When installed with a Smart PAC III, the following electric strikes are upgraded to the 10-year warranty:
 - » 1006, 1500, 1600, 4500, 5000, 5200, 5300, 7000, 7501, 8000, 8300, 8500, 9100, 9200, 9400, 9500, 9600, 9700, 9800
 - » Folger Adam 310, 712, 732, 742



**SecuriCare
Warranty**

SecuriCare 5-year Warranty

Duration: Five years from date of shipment.

Condition: Any reason including, but not limited to, installation error, vandalism or force majeure.

Replacement: Replacement product or equivalent shipped at HES expense via next day air freight in most cases.

Products Covered:

- Electric Strikes:
 - » 1006, 1500, 1600, 4500, 5000, 5200, 5300, 7000, 7501, 8000, 8300, 8500, 9100, 9200, 9400, 9500, 9600, 9700, 9800
 - » Folger Adam 310, 712, 732, 742



**SecuriCare
Warranty**

SecuriCare 3-year Warranty

Duration: Three years from date of shipment.

Condition: Any reason, including but not limited to, installation error, vandalism or force majeure.

Replacement: Replacement product or equivalent shipped at HES expense via next day air freight in most cases.

Products Covered:

- Aperio® Wireless ES100 Electric Strike
- 610, 630REL, 660, KS200, KS210 & Accessories

Check your individual product to determine warranty coverage. Batteries and consumables are not covered by HES Warranty programs. Replacement products, at HES's sole option, may be the identical item or a unit which serves as a functional replacement. If the customer has an account with HES or a valid credit card, the customer may order an advance replacement product, whereby HES will charge the customer's account for the price of the product plus next day air freight, and will credit back to the customer the full amount of the charge, including outbound freight, upon HES receipt of the original product from the customer. HES's sole and exclusive liability, and customer's sole remedy, is limited to the replacement of the HES product when delivered to HES's facility (freight and insurance charges prepaid by customer).

HES Terms & Conditions

PRICES: All prices are subject to change without notice. Prices listed on the HES website will serve as the most current list price. All shipments will be made at prices in effect at the time of order. The customer shall be responsible for payment of all applicable sales and/or use taxes and freight costs.

MINIMUM ORDER: Minimum product charge per invoice is \$150.00 USD.

PAYMENT TERMS: Net thirty (30) days from date of invoice. Interest at the rate of up to 1-1/2% per month may be charged on all past due accounts. An order received on an account which has not been paid within 45 days of the date of invoice may not be processed until the account is current. Custom orders may require a deposit.

DELIVERY TERMS: All prices are Ex-works factory. Purchaser assumes the risk of loss or damage to the goods while in transit from the point of shipment. HES reserves the right to make delivery in installments. Installments shall be separately invoiced and paid for when due. Delay in delivery of an installment shall not relieve the purchaser of its obligation to accept remaining deliveries.

FREIGHT POLICY: All Purchase Orders received with a minimum net value of \$3,500 will qualify automatically for free standard freight within the continental United States. This minimum amount applies per Purchase Order to qualify and does not include free expedited freight. Qualified orders may ship partial or ship complete at your preference. Qualified orders that ship partial will not incur freight charges. All shipments that do not qualify for free freight will be charged for freight based upon our terms in effect at the time of shipment. Customers may provide their own carrier account number for expedited freight methods or for any Purchase Order to be used to cover freight costs. Minimum amounts are subject to change without notice.

SHORTAGE: Any claim for shortages must be made to HES in writing within one (1) week of receipt of merchandise.

WARRANTY RETURNS: A Customer Care Form (CCF) for defective product must be obtained from HES before any merchandise can be returned. CCF's are valid for sixty (60) days from date of issuance. Goods returned under the terms of MagnaCare® and SecuriCare® Warranties may require a copy of the original invoice.

RETURNS: A Customer Care Form (CCF) must be obtained from HES before any merchandise can be returned. CCF's are valid for sixty (60) days from date of issuance. Items that are not factory sealed, or that are returned later than 90 days from the date of receipt are subject to a restocking charge plus an additional charge for any damage.

CANCELLATIONS: Any order may be subject to a 5% cancellation charge for catalog items. Cancellation of non-catalog or custom items will be subject to a 20% cancellation charge plus all costs (both direct and indirect) incurred by manufacturing at the point of cancellation that are properly allocated to the cancelled item(s).

LIMITATION OF LIABILITY: Neither party will be liable to the other for any delay or failure in performance arising directly out of war, sabotage, insurrection, riot, and any other act of civil disobedience, act of public enemy, fire, explosion, flood, storm, or other act of God or nature, or similar cause beyond its reasonable control, including shortage or unavailability of labor or materials. If, notwithstanding the foregoing limitations, HES has any liability to the purchaser, the purchaser agrees that the total liability to the purchaser for all losses, damages, and causes of action, whether in contract, equity, tort (including without limitation, negligence and gross negligence), or otherwise, will not exceed the amount the purchaser paid to HES for the products (including, without limitation, incidental or consequential damages, damages for lost profits or business interruption, and punitive damages).

NO THIRD PARTY LIABILITY: agrees If the purchaser uses the HES Products on behalf of others or provides to others any products referenced herein, the HES Parties shall have no liability to such persons whatsoever, and the purchaser agrees to defend and indemnify the HES Parties from any and all claims and demands asserted against them, and from any legal fees, costs and other expenses that the HES Parties incur therewith.

Warranties & Terms & Conditions *continued*

EXPORT CONTROL AND SANCTIONS:

1.1 The Customer represents and warrants to ASSA ABLOY HES that it will always act in compliance with Economic Sanctions and Export Control Laws, and that:

- a) neither the Customer, its affiliates, or any of their respective directors, officers, employees nor, so far as the Customer is aware, any agents or other persons acting on behalf of any of the foregoing:
 - I. is, or has been, a Listed Person;
 - II. has engaged in any business dealings or activities that would reasonably be expected to result in it becoming a Listed Person;
 - III. directly or indirectly, has conducted or is conducting any business dealings or activities with or for the benefit of, or is otherwise involved in any business with a Listed Person, or otherwise acting in violation of Economic Sanctions and Export Control Laws;
 - IV. has engaged or is engaging in any transaction that circumvents, evades or avoids, or has the purpose or effect of circumventing, evading or avoiding, or attempts to violate, any Economic Sanctions and Export Control Laws; or
 - V. is, or has been, in violation of, or subject to, any investigation or enquiry by, or on behalf of, any governmental or other regulatory body relating to Economic Sanctions and Export Control Laws.
- b) the Customer shall act in compliance with Economic Sanctions and Export Control Laws, and shall not sell nor re-export the Product without all requisite licenses and approvals under Economic Sanctions and Export Control Laws;
- c) the Customer shall not sell, export or re-export, the Product, directly or indirectly, to the Russian Federation or Belarus or for use in the Russian Federation or Belarus (whether or not permitted under Economic Sanctions and Export Control Laws applicable to the Customer);
- d) the Customer shall undertake its best efforts to ensure that the purpose of this Clause is not frustrated by any third parties further down the commercial chain, including by possible resellers;
- e) the Customer agrees to (i) cascade the contractual obligations set forth in this Section 1.1. in contracts with third parties, including possible resellers, further down the commercial chain.; and (ii) set up and maintain an adequate monitoring mechanism to detect conduct by any third parties further down the commercial chain, including by possible resellers, that would frustrate the purpose of this Section 1.1.;
- f) the representations and warranties set forth in this Section 1.1 above shall always remain true and correct;
- g) the Customer will provide written notice to ASSA ABLOY HES as promptly as possible and in any event within five business days, if (i) any representation or warranty should cease to be true at any time., or (ii) the Customer should encounter any problems in applying paragraphs b)- e) in this Section 1.1 above, including any relevant activities by third parties that could frustrate the purpose of said paragraphs b)- e); and
- h) the Customer will not engage in any transaction for Military End-Use unless explicitly approved in writing by ASSA ABLOY HES.
- i) The Customer will provide all information relating to requests for Products that the Customer suspects could violate or circumvent Economic Sanctions and Export Control Laws, including requests from or on behalf of a Listed Person, and other attempts to acquire ASSA ABLOY HES products in violation of Economic Sanctions and Export Control Laws. The Customer will, to the best of its abilities, cooperate with ASSA ABLOY HES to facilitate compliance with Economic Sanctions and Export Control Laws and will upon ASSA ABLOY HES's request provide ASSA ABLOY HES with true, complete and correct copies of all documentation relating to any business dealings involving the Product, including but not limited to, end-user certifications, information concerning compliance with the obligations under above paragraphs b)- e) in this Section 1.1, and other information as may be required by ASSA ABLOY HES within two weeks of the simple request of such information.

1.2 ASSA ABLOY HES shall not be obliged to make any payment or take any other action if ASSA ABLOY HES believes in good faith that such action may constitute a violation, contribute to a violation, or constitute a circumvention of any Economic Sanctions and Export Control Laws.

1.3 This agreement may be terminated immediately by ASSA ABLOY HES by written notice to the Customer if:

- (a) the Customer fails to provide any notice required under this Section 1.1 above, or should ASSA ABLOY HES determine, in its sole discretion, that any representation or warranty set forth in Section 1.1 above has failed to be true and correct at any time;
- (b) the Customer has misrepresented or failed to properly disclose any material fact, or to provide any documentation, certifications or information requested by ASSA ABLOY HES; or,
- (c) either party's ability to fulfil an obligation under this agreement is materially affected by the imposition of restrictions in Economic Sanctions and Export Control Laws.

1.4 Upon any such termination, this agreement and all rights and obligations hereunder shall immediately terminate, provided that the Customer shall remain liable to ASSA ABLOY HES for any breach of its obligations hereunder.

1.5 The Customer shall indemnify ASSA ABLOY HES and its affiliates, directors, officers, employees, advisors, agents and holders of its equity interests (collectively, "Indemnitees") against, and shall hold each Indemnitee harmless from, any and all third party claims, damages and liabilities, including the reasonable fees, charges and disbursements of counsel, incurred by or asserted against any Indemnitee arising out of, in connection with, or as a result of (a) any representation or warranty set forth in Section 1.1 above not being true and correct when made, (b) any breach by the Supplier of any obligation under Section 1.1 or 1.2 above, or (c) any claim, litigation, investigation or proceeding relating to any of the foregoing, whether based on contract, tort or any other theory. This indemnity shall survive the termination of this agreement indefinitely.

For the purposes of this part of the agreement under the heading "Export Control and Sanctions",

"**Economic Sanctions and Export Control Laws**" means all economic sanctions and export control laws, regulations, rules or restrictive measures, including but not limited to import and export restrictions on materials, intellectual property, other intangible personal property, services, items and transactions, adopted and enforced by governmental authorities of Canada, the EU, UK, UN, USA or any other relevant governmental or regulatory authority, applicable to the ASSA ABLOY HES or the Customer.

"**Listed Person**" means individuals and entities listed, or parties that are determined to be owned or controlled by one or more individuals or entities listed, in Economic Sanctions and Export Control Laws.

Compliance with Anti-Trust, Anti-Corruption and Data Privacy Laws:

The Customer, its directors, officers, and employees shall perform their obligations under these Terms and Conditions in full compliance with the ASSA ABLOY Code of Conduct which is accessible online at:

[Our Code of Conduct for business partners | ASSA ABLOY](#)

[Click this Link to Export Control and Sanctions for Canada](#)

Glass Has Never Been This Easy



NEW



HES 9100 for Single Doors
(Right Handed option shown)



HES 9200 for Double Doors
(Wide option shown)

Simplify Your Access Control.

The innovative 9100 and 9200 Electric Strikes set a new industry standard for all-glass openings with a tubular exit device.

- Retro-mount using existing prep; No cutting required
- Integrated adjustability
- Field installable monitoring
- 9100: Left Handed or Right Handed options;
9200: Wide or Narrow backset options

hesinnovations.com



Monitor Every Opening with Confidence



Monitoring solutions for unmatched security and peace of mind.



9400



5000



1600

Elevate your security with HES electric strike monitoring solutions, designed to enhance security and provide peace of mind. Easily integrate with your existing access control system to receive instant alerts of unauthorized access attempts, allowing for quick response. Unmatched reliability ensures your doors are secure and functioning properly and critical access points are not compromised.





hesinnovations.com



ASSA ABLOY

The ASSA ABLOY Group is the global leader in access solutions. Every day we help people feel safe, secure and experience a more open world.

hesinnovations.com

USA

800 626 7590 | f. 866 582 4641 | hesinnovations.com

customerservice.hes@assaabloy.com

techsupport.hes@assaabloy.com

orders.hes@assaabloy.com

CANADA

800 461 3007 | f. 800 461 8989 | assaabloydss.ca

sales.dss.ca@assaabloy.com

orders.dss.ca@assaabloy.com

Printed in the U.S.A.

Patent pending and/or patent www.assaabloydss.com/patents

Copyright © 2025, Hanchett Entry Systems, Inc., an ASSA ABLOY Group company. All rights reserved. Reproduction in whole or in part without the express written permission of Hanchett Entry Systems, Inc. is prohibited. HES-121-0725