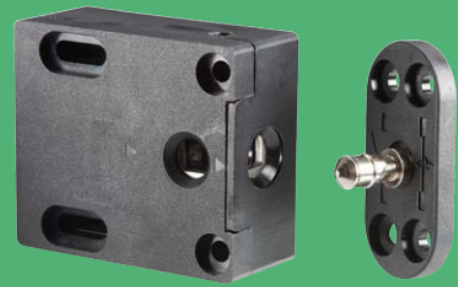


# 610 Cabinet Lock

## Electromechanical Cabinet Lock



The versatile, compact, cost effective cabinet lock to secure drawers or doors.

The 610 Cabinet Lock can be triggered by a simple relay as part of an access control system or with a stand-alone keypad. The 610 is available with or without locked state monitoring and has over 200 lbs of holding force.

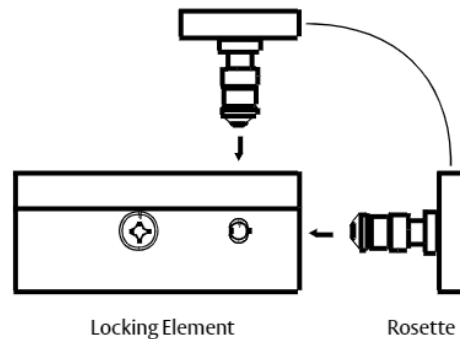
### Features

#### Standard Features

- Field selectable fail secure/fail safe
- Compact design fits most drawers and cabinets
- Installation either at the side or front of cabinets
- SecuriCare three-year, no-fault, no questions asked warranty

#### Optional Features

- LM Locked state monitoring



SecuriCare  
Warranty



Swinging  
Door



Drawers



Field Selectable  
(Fail secure /  
Fail safe)



Dual Voltage  
12/24



PoE  
Friendly

hes

ASSA ABLOY

# 610 Series Cabinet Lock

## Specifications

### Electrical

- Dual Voltage 12/24 VDC/VAC
- Monitored contact rating 25 V / 1 A
- 260 mA at 12 VDC / 130 mA at 24 VDC  
140 mA at 12 VAC / 70 mA at 24 VAC

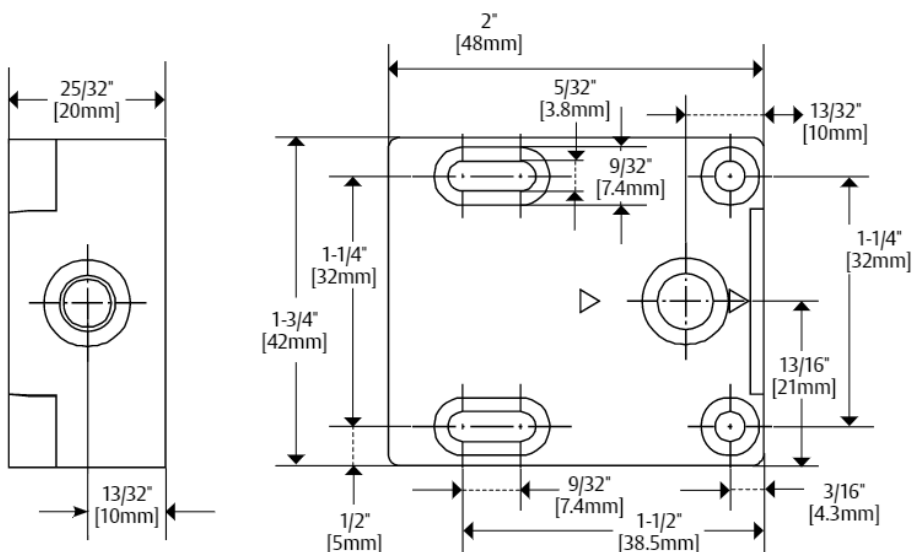
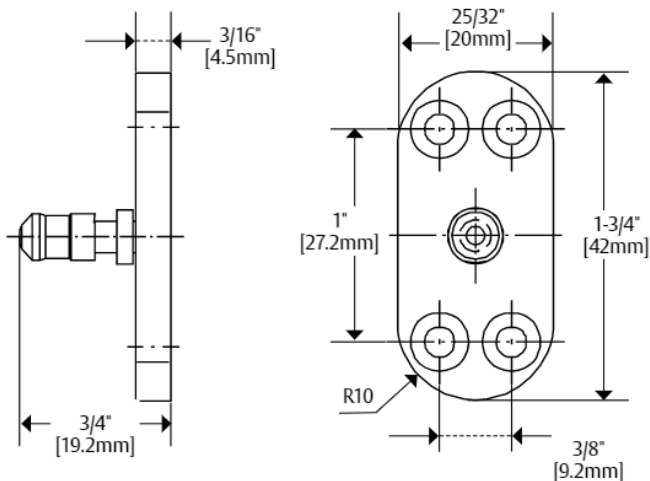
### Holding Force

- Static Strength 200 lbs

### Environmental

- Operational Temperature 14° to 104° F [-10° to 40° C]
- IP20 Rated
- Indoor Use

## Dimensions



## How to Order

SERIES	OPTION (S)
<b>610</b>	<b>- LM</b>
610 Cabinet Lock	(blank) No Monitoring LM Locked state monitoring