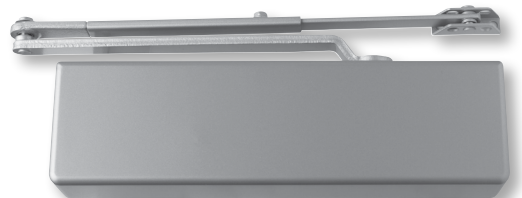
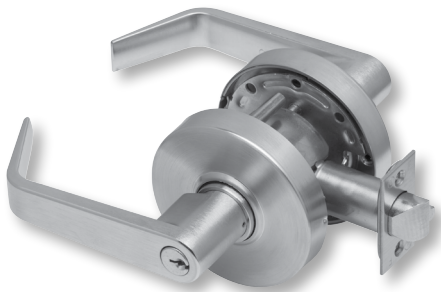
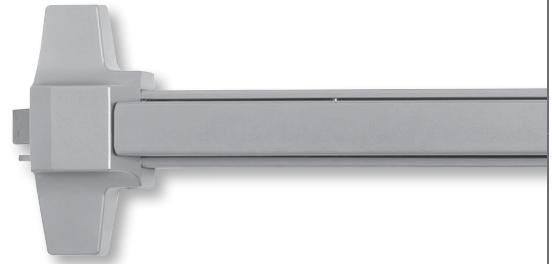




DEXTER[®]
COMMERCIAL HARDWARE

Price book 8

Effective February 28, 2025



Customer Care

Our Customer Care Representatives are available for questions or assistance.

877-671-7011

Customer service

- ☎ Press 1
- ✉ support@allegion.com

Technical product support

- ☎ Press 2
- Mechanical Locks/Keying Systems**
- ✉ Mechanical_Locks_TechProdSupport@allegion.com
- Exit Devices**
- ✉ Exits_TechProdSupport@allegion.com
- Closers**
- ✉ Closers_TechProdSupport@allegion.com

For new projects or to locate an authorized distributor

- ☎ Press 3

Templates and install instructions

www.dextercommercialhardware.com

Sales support

support@allegion.com

Administrative offices

Allegion administrative office

11819 N. Pennsylvania St.
Carmel, IN 46032
allegion.com/us

Request for quote

Carolinas

(North Carolina, South Carolina, Virginia)
Carolinas.Quotes@allegion.com

Central

(Illinois, Iowa, Kansas, Missouri, Nebraska)
Central.Quotes@allegion.com

Chicago

(Northern Illinois, Wisconsin)
Chicago.Quotes@allegion.com

Florida

Florida.Quotes@allegion.com

Metro New York

(Metro New York, Northern New Jersey)
Metro.Quotes@allegion.com

Michigan

Michigan.Quotes@allegion.com

Mid Atlantic North

(New York, Western Pennsylvania)
Mid.Atlantic.North.Quotes@allegion.com

Mid Atlantic South

(Delaware, Eastern Pennsylvania, Maryland, Northern Virginia, Southern New Jersey, Washington DC)
Mid.Atlantic.South.Quotes@allegion.com

Midwest

(Indiana, Kentucky, Ohio, West Virginia)
Midwest.Quotes@allegion.com

Mountain States

(Colorado, Idaho, Montana, Nevada, Utah, Wyoming)
Mtn.States.Quotes@allegion.com

New England

(Connecticut, Maine, Massachusetts, New Hampshire, Rhode Island, Vermont)
NewEngland.Quotes@allegion.com

North Central

(Minnesota, North Dakota, South Dakota)
NorthCentral.Quotes@allegion.com

Northern California

NoCal.Quotes@allegion.com

Northwest

(Alaska, Oregon, Washington)
Northwest.Quotes@allegion.com

South

(Alabama, Georgia, Louisiana, Mississippi, Tennessee)
South.Quotes@allegion.com

Southern California

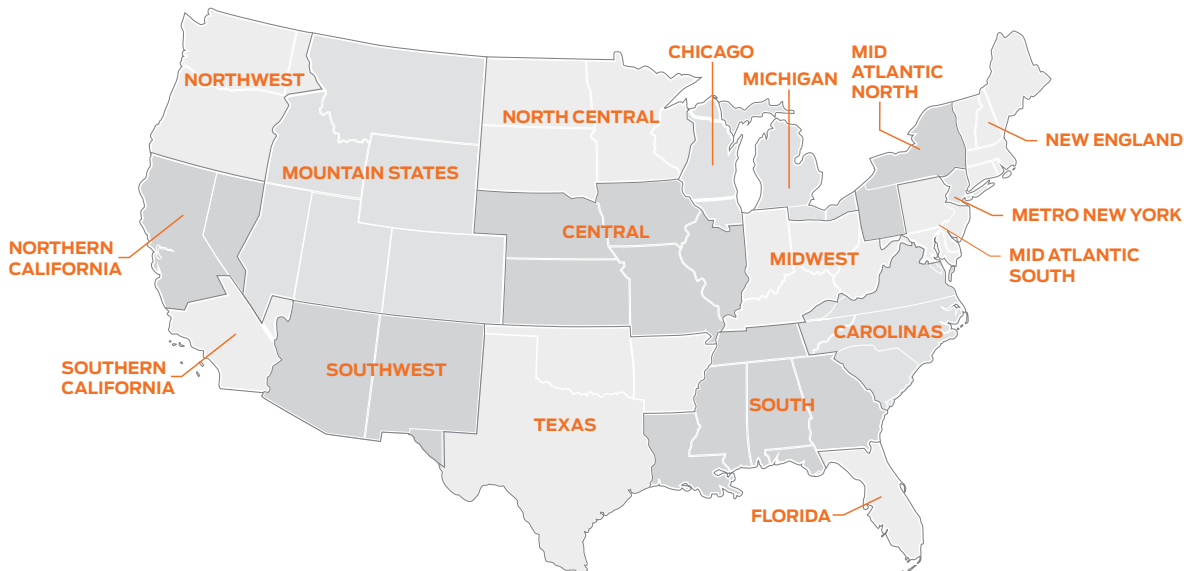
(Southern California, Hawaii)
SoCal.Quotes@allegion.com

Southwest

(Arizona, New Mexico)
Southwest.Quotes@allegion.com

Texas

(Arkansas, Texas, Oklahoma)
Texas.Quotes@allegion.com



Contents

| | | | |
|-------------------------------------|-----------|--|-----------|
| Cylindrical locks..... | 6 | Exit devices..... | 18 |
| C1000 Series Cylindrical Lock | 6 | ED1000 Series..... | 18 |
| C2000 Series Cylindrical Lock | 8 | ED1000 Series Trim and accessories | 19 |
| Lock accessories..... | 11 | ED1500 Series | 20 |
| | | ED1500 Series Trim and accessories..... | 21 |
| Deadbolts | 12 | Merchandising aids | 22 |
| DB1000 Series Deadbolt..... | 12 | | |
| DB2000 Series Deadbolt..... | 13 | | |
| Latches | 13 | | |
| Surface door closers..... | 14 | | |
| DCH1000 Series..... | 14 | | |
| DCH4000 Series | 14 | | |
| DCM1000 Series..... | 15 | | |
| DCL2000 Series..... | 15 | | |
| DCR8000 Series..... | 16 | | |
| Drop plates | 17 | | |

Policies and documents

The purchase of Allegion products is governed by the Allegion Authorized Seller Program. For program terms and conditions, and other program details, please visit: www.allegion.com/AuthorizedSeller.

For Warranty information, visit us.allegion.com/warranty or contact Customer Service at 877-671-7011.

Sustainability

Allegion can provide sustainability documentation for select products, ensuring transparency and adherence to environmental standards and building certification programs such as LEED and Living Building Challenge. This documentation includes detailed information on the sustainable practices and materials used, helping you make informed decisions that align with your sustainability goals.

To view the full list of products with declarations, please visit: <https://us.allegion.com/en/resources/sustainability.html>

FINISH CROSS-REFERENCE GUIDE

Allegion now uses BHMA codes to identify finishes across all product lines.

| Previous Code | BHMA Code | Name | Substrate |
|---------------|-----------|------------------------------|-----------------|
| 32-316 | 629-316 | Bright Stainless | Steel |
| 32D-316 | 630-316 | Satin Stainless | Steel |
| 606 | 606 | Satin Brass | Brass |
| 613 | 613 | Oil-Rubbed Bronze | Bronze |
| 618 | 618 | Polished Nickel | Brass, Bronze |
| 619 | 619 | Satin Nickel | Brass, Bronze |
| 622 | 622 | Matte Black | Brass, Bronze |
| 626 | 626 | Satin Chrome | Brass, Bronze |
| 630 | 630 | Satin Stainless | Stainless steel |
| 689 | 689 | Aluminum Paint | Any |
| A15 | 619 | Satin Nickel | Brass, Bronze |
| A92 | 673 | Aluminum, Clear Coated | Aluminum |
| ALUM | 689 | Aluminum Paint | Any |
| B3 | 605 | Bright Brass | Brass |
| B10B | 613 | Oil-Rubbed Bronze | Bronze |
| B15 | 619 | Satin Nickel | Brass, Bronze |
| B26D | 626 | Satin Chrome | Brass, Bronze |
| B-613 | 613 | Oil-Rubbed Bronze | Bronze |
| B-619 | 619 | Satin Nickel | Brass, Bronze |
| Black Prime | 693 | Black Paint | Any |
| DKBRZ | 695 | Dark Bronze Paint | Any |
| DC13 | 710 | Dark Brown | Anodized |
| F14 | 618 | Polished Nickel | Brass, Bronze |
| F15 | 619 | Satin Nickel | Brass, Bronze |
| F26D | 626 | Satin Chrome | Brass, Bronze |
| F619E | 619 | Satin Nickel | Brass, Bronze |
| MTBLK | 622 | Matte Black | Brass, Bronze |
| P13 | 695 | Dark Bronze Paint | Any |
| P28 | 689 | Aluminum Paint | Any |
| P35 | 693 | Black Paint | Any |
| SP28 | 628 | Aluminum, Clear Anodized | Aluminum |
| SP28 | 689 | Aluminum Paint | Any |
| SP313 | 695 | Dark Bronze Paint | Any |
| US2C | 602 | Zinc Plated "C" | Steel |
| US2G | 603 | Zinc Plated "G" | Steel |
| US3 | 632 | Bright Brass | Steel |
| US4 | 633 | Satin Brass | Steel |
| US10 | 639 | Satin Bronze | Steel |
| US10B | 613 | Oil-Rubbed Bronze | Bronze |
| US15 | 619 | Satin Nickel | Brass, Bronze |
| US15 | 646 | Satin Nickel | Steel |
| US26D | 626 | Satin Chrome | Brass, Bronze |
| US26D | 652 | Satin Chrome | Steel |
| US27 | 627 | Satin Aluminum, Clear Coated | Aluminum |
| US28 | 628 | Aluminum, Clear Anodized | Aluminum |
| US32D | 630 | Satin Stainless | Stainless steel |
| USP | 600 | Primed for Painting | Steel |

this page intentionally blank

C1000 SERIES CYLINDRICAL LOCK

- Grade 1, UL listed 3 hour
- Finishes: 626 (US26D) Satin Chrome; 613 (US10B) Oil-Rubbed Bronze
- 1-3/8" to 2" door range standard
- All functions include 1-1/8" x 2-1/4" square-corner beveled latch with 2-3/4" backset and ANSI 1-1/4" x 4-7/8" curved lip strike

- Accommodates Schlage conventional 6-pin (keyed 6) cylinders in Schlage C keyway, keyed different
- Accommodates SFIC to accept 6-pin/7-pin
- Master Carton Quantities: 4 for all UPCs



| Product description | Lever feature | Function | Trim | Finish | Cylinder | UPC # | Price |
|--------------------------|---------------|--------------------------|---------|--------|----------------------|--------------|----------|
| C1000-PASS-R-626 | Non-clutching | Passage (F75) | Regular | 626 | N/A | 043156534692 | \$241.00 |
| C1000-PASS-R-613 | Non-clutching | Passage (F75) | Regular | 613 | N/A | 043156534708 | \$268.00 |
| C1000-PASS-C-626 | Non-clutching | Passage (F75) | Curved | 626 | N/A | 043156534715 | \$241.00 |
| C1000-PASS-C-613 | Non-clutching | Passage (F75) | Curved | 613 | N/A | 043156534722 | \$268.00 |
| C1000-PRIV-R-626 | Non-clutching | Privacy (F76) | Regular | 626 | N/A | 043156534739 | \$260.00 |
| C1000-PRIV-R-613 | Non-clutching | Privacy (F76) | Regular | 613 | N/A | 043156534746 | \$289.00 |
| C1000-PRIV-C-626 | Non-clutching | Privacy (F76) | Curved | 626 | N/A | 043156534753 | \$260.00 |
| C1000-PRIV-C-613 | Non-clutching | Privacy (F76) | Curved | 613 | N/A | 043156534760 | \$289.00 |
| C1000-ASYL-R-626-KDC | Clutching | Asylum (F87) | Regular | 626 | 6-pin, Schlage C, KD | 043156534777 | \$325.00 |
| C1000-ASYL-C-626-KDC | Clutching | Asylum (F87) | Curved | 626 | 6-pin, Schlage C, KD | 043156534784 | \$325.00 |
| C1000-ENTR-R-626-KDC | Clutching | Entry/Office (F109) | Regular | 626 | 6-pin, Schlage C, KD | 043156534791 | \$271.00 |
| C1000-NC-ENTR-R-626-KDC | Non-clutching | Entry/Office (F109) | Regular | 626 | 6-pin, Schlage C, KD | 043156557905 | \$271.00 |
| C1000-ENTR-R-613-KDC | Clutching | Entry/Office (F109) | Regular | 613 | 6-pin, Schlage C, KD | 043156534807 | \$304.00 |
| C1000-ENTR-R-626-SFIC | Clutching | Entry/Office (F109) | Regular | 626 | Less SFIC | 043156534814 | \$271.00 |
| C1000-NC-ENTR-R-626-SFIC | Non-clutching | Entry/Office (F109) | Regular | 626 | Less SFIC | 043156557912 | \$271.00 |
| C1000-ENTR-R-613-SFIC | Clutching | Entry/Office (F109) | Regular | 613 | Less SFIC | 043156534869 | \$304.00 |
| C1000-ENTR-C-626-KDC | Clutching | Entry/Office (F109) | Curved | 626 | 6-pin, Schlage C, KD | 043156534838 | \$271.00 |
| C1000-ENTR-C-613-KDC | Clutching | Entry/Office (F109) | Curved | 613 | 6-pin, Schlage C, KD | 043156534845 | \$304.00 |
| C1000-ENTR-C-626-SFIC | Clutching | Entry/Office (F109) | Curved | 626 | Less SFIC | 043156534852 | \$271.00 |
| C1000-ENTR-C-613-SFIC | Clutching | Entry/Office (F109) | Curved | 613 | Less SFIC | 043156534821 | \$304.00 |
| C1000-CLRM-R-626-KDC | Clutching | Classroom (F84) | Regular | 626 | 6-pin, Schlage C, KD | 043156534876 | \$271.00 |
| C1000-CLRM-R-613-KDC | Clutching | Classroom (F84) | Regular | 613 | 6-pin, Schlage C, KD | 043156534883 | \$304.00 |
| C1000-CLRM-R-626-SFIC | Clutching | Classroom (F84) | Regular | 626 | Less SFIC | 043156534890 | \$271.00 |
| C1000-CLRM-R-613-SFIC | Clutching | Classroom (F84) | Regular | 613 | Less SFIC | 043156534906 | \$304.00 |
| C1000-CLRM-C-626-KDC | Clutching | Classroom (F84) | Curved | 626 | 6-pin, Schlage C, KD | 043156534913 | \$271.00 |
| C1000-CLRM-C-613-KDC | Clutching | Classroom (F84) | Curved | 613 | 6-pin, Schlage C, KD | 043156534920 | \$304.00 |
| C1000-CLRM-C-626-SFIC | Clutching | Classroom (F84) | Curved | 626 | Less SFIC | 043156534937 | \$271.00 |
| C1000-CLRM-C-613-SFIC | Clutching | Classroom (F84) | Curved | 613 | Less SFIC | 043156534944 | \$304.00 |
| C1000-CSEC-R-626-KDC | Clutching | Classroom Security (F88) | Regular | 626 | 6-pin, Schlage C, KD | 043156534951 | \$325.00 |
| C1000-CSEC-R-613-KDC | Clutching | Classroom Security (F88) | Regular | 613 | 6-pin, Schlage C, KD | 043156534968 | \$366.00 |
| C1000-CSEC-R-626-SFIC | Clutching | Classroom Security (F88) | Regular | 626 | Less SFIC | 043156534975 | \$369.00 |
| C1000-CSEC-R-613-SFIC | Clutching | Classroom Security (F88) | Regular | 613 | Less SFIC | 043156534982 | \$366.00 |
| C1000-CSEC-C-626-KDC | Clutching | Classroom Security (F88) | Curved | 626 | 6-pin, Schlage C, KD | 043156534999 | \$325.00 |
| C1000-CSEC-C-613-KDC | Clutching | Classroom Security (F88) | Curved | 613 | 6-pin, Schlage C, KD | 043156535002 | \$366.00 |
| C1000-CSEC-C-626-SFIC | Clutching | Classroom Security (F88) | Curved | 626 | Less SFIC | 043156535019 | \$245.00 |
| C1000-CSEC-C-613-SFIC | Clutching | Classroom Security (F88) | Curved | 613 | Less SFIC | 043156535026 | \$366.00 |
| C1000-STRM-R-626-KDC | Clutching | Storeroom (F86) | Regular | 626 | 6-pin, Schlage C, KD | 043156535033 | \$271.00 |

C1000 SERIES CYLINDRICAL LOCK

| Product description | Lever feature | Function | Trim | Finish | Cylinder | UPC # | Price |
|--------------------------|---------------|-----------------|---------|--------|----------------------|--------------|----------|
| C1000-NC-STRM-R-626-KDC | Non-clutching | Storeroom (F86) | Regular | 626 | 6-pin, Schlage C, KD | 043156557882 | \$271.00 |
| C1000-STRM-R-613-KDC | Clutching | Storeroom (F86) | Regular | 613 | 6-pin, Schlage C, KD | 043156535040 | \$304.00 |
| C1000-STRM-R-626-SFIC | Clutching | Storeroom (F86) | Regular | 626 | Less SFIC | 043156535057 | \$271.00 |
| C1000-NC-STRM-R-626-SFIC | Non-clutching | Storeroom (F86) | Regular | 626 | Less SFIC | 043156557899 | \$271.00 |
| C1000-STRM-R-613-SFIC | Clutching | Storeroom (F86) | Regular | 613 | Less SFIC | 043156535064 | \$304.00 |
| C1000-STRM-C-626-KDC | Clutching | Storeroom (F86) | Curved | 626 | 6-pin, Schlage C, KD | 043156535071 | \$271.00 |
| C1000-STRM-C-613-KDC | Clutching | Storeroom (F86) | Curved | 613 | 6-pin, Schlage C, KD | 043156535088 | \$304.00 |
| C1000-STRM-C-626-SFIC | Clutching | Storeroom (F86) | Curved | 626 | Less SFIC | 043156535095 | \$271.00 |
| C1000-STRM-C-613-SFIC | Clutching | Storeroom (F86) | Curved | 613 | Less SFIC | 043156535101 | \$304.00 |

C2000 SERIES CYLINDRICAL LOCK

- Grade 2, UL listed 3 hour
- Finishes: 626 (US26D) Satin Chrome; 613 (US10B) Oil-Rubbed Bronze; 630 (US32D) = Satin Stainless
- 1-3/8" to 1-3/4" door range standard
- All functions include 1-1/8" x 2-1/4" square-corner beveled latch with 2-3/4" backset and 1-1/4" x 4-7/8" curved lip strike
- Brass (605) ball knobs come packaged with square-corner beveled latch with 2-3/8" backset and ANSI 1-1/4" x 2-1/4" T-Strike standard
- Master Carton Quantities: 8 for Single Dummy UPCs and 4 for all other UPCs



| Product description | Lever feature | Function | Trim | Finish | Cylinder | UPC # | Price |
|--------------------------|---------------|---------------------|---------|--------|----------------------|--------------|----------|
| C2000-SDUM-R-626 | Non-clutching | Single dummy trim | Regular | 626 | N/A | 043156535118 | \$56.00 |
| C2000-SDUM-R-613 | Non-clutching | Single dummy trim | Regular | 613 | N/A | 043156535125 | \$61.00 |
| C2000-SDUM-R-605 | Non-clutching | Single dummy trim | Regular | 605 | N/A | 043156556489 | \$61.00 |
| C2000-SDUM-C-626 | Non-clutching | Single dummy trim | Curved | 626 | N/A | 043156535132 | \$56.00 |
| C2000-SDUM-C-613 | Non-clutching | Single dummy trim | Curved | 613 | N/A | 043156535149 | \$61.00 |
| C2000-SDUM-B-630 | Non-clutching | Single dummy trim | Ball | 630 | N/A | 043156535156 | \$26.00 |
| C2000-SDUM-B-613 | Non-clutching | Single dummy trim | Ball | 613 | N/A | 043156535163 | \$30.00 |
| C2000-PASS-R-626 | Non-clutching | Passage (F75) | Regular | 626 | N/A | 043156535170 | \$119.00 |
| C2000-PASS-R-613 | Non-clutching | Passage (F75) | Regular | 613 | N/A | 043156535187 | \$135.00 |
| C2000-PASS-R-605 | Non-clutching | Passage (F75) | Regular | 605 | N/A | 043156556496 | \$135.00 |
| C2000-PASS-C-626 | Non-clutching | Passage (F75) | Curved | 626 | N/A | 043156535194 | \$119.00 |
| C2000-PASS-C-613 | Non-clutching | Passage (F75) | Curved | 613 | N/A | 043156535200 | \$135.00 |
| C2000-PASS-B-630 | Non-clutching | Passage (F75) | Ball | 630 | N/A | 043156535217 | \$63.00 |
| C2000-PASS-B-613 | Non-clutching | Passage (F75) | Ball | 613 | N/A | 043156535224 | \$72.00 |
| C2000-PASS-B-605 | Non-clutching | Passage (F75) | Ball | 605 | N/A | 043156556519 | \$72.00 |
| C2000-PRIV-R-626 | Non-clutching | Privacy (F76) | Regular | 626 | N/A | 043156535231 | \$126.00 |
| C2000-PRIV-R-613 | Non-clutching | Privacy (F76) | Regular | 613 | N/A | 043156535248 | \$141.00 |
| C2000-PRIV-R-605 | Non-clutching | Privacy (F76) | Regular | 605 | N/A | 043156556502 | \$141.00 |
| C2000-PRIV-C-626 | Non-clutching | Privacy (F76) | Curved | 626 | N/A | 043156535255 | \$126.00 |
| C2000-PRIV-C-613 | Non-clutching | Privacy (F76) | Curved | 613 | N/A | 043156535262 | \$141.00 |
| C2000-PRIV-B-630 | Non-clutching | Privacy (F76) | Ball | 630 | N/A | 043156535279 | \$65.00 |
| C2000-PRIV-B-613 | Non-clutching | Privacy (F76) | Ball | 613 | N/A | 043156535286 | \$73.00 |
| C2000-PRIV-B-605 | Non-clutching | Privacy (F76) | Ball | 605 | N/A | 043156556526 | \$73.00 |
| C2000-ENTR-R-626-KDC | Non-clutching | Entry/Office (F109) | Regular | 626 | 6-pin, Schlage C, KD | 043156535293 | \$133.00 |
| C2000-ENTR-R-613-KDC | Non-clutching | Entry/Office (F109) | Regular | 613 | 6-pin, Schlage C, KD | 043156535309 | \$148.00 |
| C2000-ENTR-R-605-KDC | Non-clutching | Entry/Office (F109) | Regular | 605 | 6-pin, Schlage C, KD | 043156556588 | \$148.00 |
| C2000-CL-ENTR-R-626-KDC | Clutching | Entry/Office (F109) | Regular | 626 | 6-pin, Schlage C, KD | 043156642908 | \$148.00 |
| C2000-CL-ENTR-R-613-KDC | Clutching | Entry/Office (F109) | Regular | 613 | 6-pin, Schlage C, KD | 043156642915 | \$156.00 |
| C2000-ENTR-R-626-SFIC | Non-clutching | Entry/Office (F109) | Regular | 626 | Less SFIC | 043156535316 | \$133.00 |
| C2000-ENTR-R-613-SFIC | Non-clutching | Entry/Office (F109) | Regular | 613 | Less SFIC | 043156535323 | \$148.00 |
| C2000-ENTR-R-605-SFIC | Non-clutching | Entry/Office (F109) | Regular | 605 | Less SFIC | 043156556595 | \$148.00 |
| C2000-CL-ENTR-R-626-SFIC | Clutching | Entry/Office (F109) | Regular | 626 | Less SFIC | 043156642922 | \$148.00 |
| C2000-CL-ENTR-R-613-SFIC | Clutching | Entry/Office (F109) | Regular | 613 | Less SFIC | 043156642939 | \$156.00 |
| C2000-ENTR-C-626-KDC | Non-clutching | Entry/Office (F109) | Curved | 626 | 6-pin, Schlage C, KD | 043156535330 | \$133.00 |
| C2000-ENTR-C-613-KDC | Non-clutching | Entry/Office (F109) | Curved | 613 | 6-pin, Schlage C, KD | 043156535347 | \$148.00 |
| C2000-CL-ENTR-C-626-KDC | Clutching | Entry/Office (F109) | Curved | 626 | 6-pin, Schlage C, KD | 043156642946 | \$148.00 |
| C2000-CL-ENTR-C-613-KDC | Clutching | Entry/Office (F109) | Curved | 613 | 6-pin, Schlage C, KD | 043156642953 | \$156.00 |
| C2000-ENTR-C-626-SFIC | Non-clutching | Entry/Office (F109) | Curved | 626 | Less SFIC | 043156535354 | \$133.00 |

CYLINDRICAL LOCKS

DEADBOLTS

SURFACE DOOR CLOSERS

EXIT DEVICES

MERCHANDISING AIDS

C2000 SERIES CYLINDRICAL LOCK

| Product description | Lever feature | Function | Trim | Finish | Cylinder | UPC # | Price |
|--------------------------|---------------|-----------------------|---------|--------|----------------------|--------------|----------|
| C2000-ENTR-C-613-SFIC | Non-clutching | Entry / Office (F109) | Curved | 613 | Less SFIC | 043156535361 | \$148.00 |
| C2000-CL-ENTR-C-626-SFIC | Clutching | Entry / Office (F109) | Curved | 626 | Less SFIC | 043156642960 | \$148.00 |
| C2000-CL-ENTR-C-613-SFIC | Clutching | Entry / Office (F109) | Curved | 613 | Less SFIC | 043156642977 | \$156.00 |
| C2000-ENTR-B-630-KDC | Non-clutching | Entry / Office (F109) | Ball | 630 | 6-pin, Schlage C, KD | 043156535378 | \$78.00 |
| C2000-ENTR-B-613-KDC | Non-clutching | Entry / Office (F109) | Ball | 613 | 6-pin, Schlage C, KD | 043156535385 | \$88.00 |
| C2000-ENTR-B-605-KDC | Non-clutching | Entry / Office (F109) | Ball | 605 | 6-pin, Schlage C, KD | 043156556533 | \$88.00 |
| C2000-ENTR-B-630-SFIC | Non-clutching | Entry / Office (F109) | Ball | 630 | Less SFIC | 043156535392 | \$78.00 |
| C2000-ENTR-B-613-SFIC | Non-clutching | Entry / Office (F109) | Ball | 613 | Less SFIC | 043156535408 | \$88.00 |
| C2000-ENTR-B-605-SFIC | Non-clutching | Entry / Office (F109) | Ball | 605 | Less SFIC | 043156556540 | \$90.00 |
| C2000-CLRM-R-626-KDC | Non-clutching | Classroom (F84) | Regular | 626 | 6-pin, Schlage C, KD | 043156535415 | \$133.00 |
| C2000-CLRM-R-613-KDC | Non-clutching | Classroom (F84) | Regular | 613 | 6-pin, Schlage C, KD | 043156535422 | \$135.00 |
| C2000-CLRM-R-605-KDC | Non-clutching | Classroom (F84) | Regular | 605 | 6-pin, Schlage C, KD | 043156556625 | \$135.00 |
| C2000-CL-CLRM-R-626-KDC | Clutching | Classroom (F84) | Regular | 626 | 6-pin, Schlage C, KD | 043156642984 | \$148.00 |
| C2000-CL-CLRM-R-613-KDC | Clutching | Classroom (F84) | Regular | 613 | 6-pin, Schlage C, KD | 043156642991 | \$156.00 |
| C2000-CLRM-R-626-SFIC | Non-clutching | Classroom (F84) | Regular | 626 | Less SFIC | 043156535439 | \$133.00 |
| C2000-CLRM-R-613-SFIC | Non-clutching | Classroom (F84) | Regular | 613 | Less SFIC | 043156535446 | \$135.00 |
| C2000-CLRM-R-605-SFIC | Non-clutching | Classroom (F84) | Regular | 605 | Less SFIC | 043156556632 | \$135.00 |
| C2000-CL-CLRM-R-626-SFIC | Clutching | Classroom (F84) | Regular | 626 | Less SFIC | 043156643004 | \$148.00 |
| C2000-CL-CLRM-R-613-SFIC | Clutching | Classroom (F84) | Regular | 613 | Less SFIC | 043156643011 | \$156.00 |
| C2000-CLRM-C-626-KDC | Non-clutching | Classroom (F84) | Curved | 626 | 6-pin, Schlage C, KD | 043156535453 | \$133.00 |
| C2000-CLRM-C-613-KDC | Non-clutching | Classroom (F84) | Curved | 613 | 6-pin, Schlage C, KD | 043156535460 | \$135.00 |
| C2000-CL-CLRM-C-626-KDC | Clutching | Classroom (F84) | Curved | 626 | 6-pin, Schlage C, KD | 043156643028 | \$148.00 |
| C2000-CL-CLRM-C-613-KDC | Clutching | Classroom (F84) | Curved | 613 | 6-pin, Schlage C, KD | 043156643035 | \$156.00 |
| C2000-CLRM-C-626-SFIC | Non-clutching | Classroom (F84) | Curved | 626 | Less SFIC | 043156535477 | \$133.00 |
| C2000-CLRM-C-613-SFIC | Non-clutching | Classroom (F84) | Curved | 613 | Less SFIC | 043156535484 | \$135.00 |
| C2000-CL-CLRM-C-626-SFIC | Clutching | Classroom (F84) | Curved | 626 | Less SFIC | 043156643042 | \$148.00 |
| C2000-CL-CLRM-C-613-SFIC | Clutching | Classroom (F84) | Curved | 613 | Less SFIC | 043156643059 | \$156.00 |
| C2000-CLRM-B-630-KDC | Non-clutching | Classroom (F84) | Ball | 630 | 6-pin, Schlage C, KD | 043156535491 | \$78.00 |
| C2000-CLRM-B-613-KDC | Non-clutching | Classroom (F84) | Ball | 613 | 6-pin, Schlage C, KD | 043156535507 | \$88.00 |
| C2000-CLRM-B-605-KDC | Non-clutching | Classroom (F84) | Ball | 605 | 6-pin, Schlage C, KD | 043156556557 | \$88.00 |
| C2000-CLRM-B-630-SFIC | Non-clutching | Classroom (F84) | Ball | 630 | Less SFIC | 043156535514 | \$78.00 |
| C2000-CLRM-B-613-SFIC | Non-clutching | Classroom (F84) | Ball | 613 | Less SFIC | 043156535521 | \$88.00 |
| C2000-STRM-R-626-KDC | Non-clutching | Storeroom (F86) | Regular | 626 | 6-pin, Schlage C, KD | 043156535538 | \$133.00 |
| C2000-STRM-R-613-KDC | Non-clutching | Storeroom (F86) | Regular | 613 | 6-pin, Schlage C, KD | 043156535545 | \$148.00 |
| C2000-STRM-R-605-KDC | Non-clutching | Storeroom (F86) | Regular | 605 | 6-pin, Schlage C, KD | 043156556601 | \$148.00 |
| C2000-CL-STRM-R-626-KDC | Clutching | Storeroom (F86) | Regular | 626 | 6-pin, Schlage C, KD | 043156643066 | \$148.00 |
| C2000-CL-STRM-R-613-KDC | Clutching | Storeroom (F86) | Regular | 613 | 6-pin, Schlage C, KD | 043156643073 | \$156.00 |
| C2000-STRM-R-626-SFIC | Non-clutching | Storeroom (F86) | Regular | 626 | Less SFIC | 043156535552 | \$133.00 |
| C2000-STRM-R-613-SFIC | Non-clutching | Storeroom (F86) | Regular | 613 | Less SFIC | 043156535569 | \$148.00 |
| C2000-STRM-R-605-SFIC | Non-clutching | Storeroom (F86) | Regular | 605 | Less SFIC | 043156556618 | \$148.00 |
| C2000-CL-STRM-R-626-SFIC | Clutching | Storeroom (F86) | Regular | 626 | Less SFIC | 043156643080 | \$148.00 |
| C2000-CL-STRM-R-613-SFIC | Clutching | Storeroom (F86) | Regular | 613 | Less SFIC | 043156643097 | \$156.00 |
| C2000-STRM-C-626-KDC | Non-clutching | Storeroom (F86) | Curved | 626 | 6-pin, Schlage C, KD | 043156535576 | \$133.00 |

C2000 SERIES CYLINDRICAL LOCK

| Product description | Lever feature | Function | Trim | Finish | Cylinder | UPC # | Price |
|--------------------------|---------------|-----------------|--------|--------|----------------------|--------------|----------|
| C2000-STRM-C-613-KDC | Non-clutching | Storeroom (F86) | Curved | 613 | 6-pin, Schlage C, KD | 043156535583 | \$148.00 |
| C2000-CL-STRM-C-626-KDC | Clutching | Storeroom (F86) | Curved | 626 | 6-pin, Schlage C, KD | 043156643103 | \$148.00 |
| C2000-CL-STRM-C-613-KDC | Clutching | Storeroom (F86) | Curved | 613 | 6-pin, Schlage C, KD | 043156643110 | \$156.00 |
| C2000-STRM-C-626-SFIC | Non-clutching | Storeroom (F86) | Curved | 626 | Less SFIC | 043156535590 | \$133.00 |
| C2000-STRM-C-613-SFIC | Non-clutching | Storeroom (F86) | Curved | 613 | Less SFIC | 043156535606 | \$148.00 |
| C2000-CL-STRM-C-626-SFIC | Clutching | Storeroom (F86) | Curved | 626 | Less SFIC | 043156643127 | \$148.00 |
| C2000-CL-STRM-C-613-SFIC | Clutching | Storeroom (F86) | Curved | 613 | Less SFIC | 043156643134 | \$156.00 |
| C2000-STRM-B-630-KDC | Non-clutching | Storeroom (F86) | Ball | 630 | 6-pin, Schlage C, KD | 043156535613 | \$78.00 |
| C2000-STRM-B-613-KDC | Non-clutching | Storeroom (F86) | Ball | 613 | 6-pin, Schlage C, KD | 043156535620 | \$90.00 |
| C2000-STRM-B-605-KDC | Non-clutching | Storeroom (F86) | Ball | 605 | 6-pin, Schlage C, KD | 043156556564 | \$90.00 |
| C2000-STRM-B-630-SFIC | Non-clutching | Storeroom (F86) | Ball | 630 | Less SFIC | 043156535637 | \$78.00 |
| C2000-STRM-B-613-SFIC | Non-clutching | Storeroom (F86) | Ball | 613 | Less SFIC | 043156535644 | \$90.00 |
| C2000-STRM-B-605-SFIC | Non-clutching | Storeroom (F86) | Ball | 605 | Less SFIC | 043156556571 | \$90.00 |

CYLINDRICAL LOCKS

DEADBOLTS

SURFACE DOOR CLOSERS

EXIT DEVICES

MERCHANDISING AIDS

LATCHES

- Finishes: 626 (US26D) Satin Chrome; 613 (US10B) Oil-Rubbed Bronze; 630 (US32D) = Satin Stainless
- Latches are square corner
- 1" x 2-1/4" Backsets available in 2-3/8" and 2-3/4"
- Products with "234" in the description represent a 2-3/4" backset
- Master Carton Quantities: 20 for all UPCs

Grade 1 Latches

| Product description | Function | Latch type | Finish | UPC # | Price |
|---------------------|--|--------------|--------|--------------|---------|
| C1000-SL-630 | Passage, Privacy | Spring latch | 630 | 043156538034 | \$27.00 |
| C1000-DL-630 | Entry / Office, Classroom, Classroom Security, Storeroom | Deadlatch | 630 | 043156538041 | \$27.00 |
| C1000-SL-234-630 | Passage, Privacy | Spring latch | 630 | 043156656059 | \$27.00 |
| C1000-DL-234-630 | Entry / Office, Classroom, Classroom Security, Storeroom | Deadlatch | 630 | 043156643158 | \$27.00 |

Grade 2 Latches

| Product description | Function | Latch type | Finish | UPC # | Price |
|---------------------|--------------------------------------|--------------|--------|--------------|---------|
| C2000-SL-613 | Passage, Privacy | Spring latch | 613 | 043156538065 | \$17.00 |
| C2000-SL-605 | Passage, Privacy | Spring latch | 605 | 043156556687 | \$17.00 |
| C2000-SL-234-630 | Passage, Privacy | Spring latch | 630 | 043156656066 | \$17.00 |
| C2000-DL-613 | Entry / Office, Classroom, Storeroom | Deadlatch | 613 | 043156538072 | \$17.00 |
| C2000-DL-605 | Entry / Office, Classroom, Storeroom | Deadlatch | 605 | 043156556694 | \$17.00 |
| C2000-DL-234-605 | Entry / Office, Classroom, Storeroom | Deadlatch | 605 | 043156558414 | \$17.00 |
| C2000-DL-234-630 | Entry / Office, Classroom, Storeroom | Deadlatch | 630 | 043156643165 | \$17.00 |
| C2000-SL-630 | Passage, Privacy | Spring latch | 630 | 043156538089 | \$17.00 |
| C2000-SL-234-605 | Passage, Privacy | Spring latch | 605 | 043156558407 | \$17.00 |
| C2000-DL-630 | Entry / Office, Classroom, Storeroom | Deadlatch | 630 | 043156538096 | \$17.00 |

STRIKES

- Finishes: 605 (US3) Bright Brass; 613 (US10B) Oil-Rubbed Bronze; 630 (US32D) = Satin Stainless
- Master Carton Quantities: 20 for all UPCs

Grade 1 Strikes

- Radius corner, full lip strike, 1-3/4" x 2-1/4", 630 standard finish

| Product description | Function | Finish | UPC # | Price |
|---------------------|---|--------|--------------|--------|
| C1000-RCFLS-626 | Radius corner, full lip strike, 1-3/4" x 2-1/4" | 626 | 043156538058 | \$4.00 |

Grade 2 Strikes

- Radius corner, full lip strike, 630 standard finish

| Product description | Function | Finish | UPC # | Price |
|---------------------|---|--------|--------------|--------|
| C2000-RCFLS-613 | Radius corner, full lip strike, 1-5/8" x 2-1/4" | 613 | 043156538102 | \$4.00 |
| C2000-RCFLS-630 | Radius corner, full lip strike, 1-5/8" x 2-1/4" | 630 | 043156538119 | \$4.00 |
| C2000-ACLS-605 | ANSI, curved lip strike, 1-1/4" x 4-7/8" (30-148) | 605 | 043156556700 | \$6.00 |

TAILPIECES

- Master Carton Quantities: 100 for all UPCs

| Product description | Function | Finish | Cylinder | UPC # | Price |
|---------------------|----------------------------|--------|----------|--------------|---------|
| C2000-TP-SFIC | Extra tailpiece, Less SFIC | N/A | N/A | 043156643141 | \$3.00 |
| DB2000-TP-SFIC | Extra tailpiece, Less SFIC | N/A | N/A | 043156642809 | \$13.00 |
| DB2000-TP | Extra tailpiece | N/A | N/A | 043156642816 | \$2.00 |

DB1000 SERIES DEADBOLT

- Grade 1, non UL listed 3 hour
- Finishes: 626 (US26D) Satin Chrome; 613 (US10B) Oil-Rubbed Bronze
- 1-3/8" - 1-7/8" standard cylinder door range; 1-5/8" - 2" SFIC door range
- All functions include 2-3/8" x 2-3/4" universal square corner latch (p/n 30-253), 1-1/8" x 2-3/4" square corner lipless strike

- 4WB-KIT contains an adjustable latch with both square corner faceplate and drive-in style collar in the box
- Accommodates Schlage conventional 6-pin (keyed 6) in Schlage C keyway, keyed different and SFIC cylinders
- Master Carton Quantities: 8 for all UPCs



| Product description | Function | Finish | Cylinder | UPC # | Price |
|---------------------|------------------------|--------|----------------------|--------------|----------|
| DB1000-SCT-626-KDC | Single cylinder x turn | 626 | 6-pin, Schlage C, KD | 043156535651 | \$114.00 |
| DB1000-SCT-613-KDC | Single cylinder x turn | 613 | 6-pin, Schlage C, KD | 043156535668 | \$129.00 |
| DB1000-SCT-626-SFIC | Single cylinder x turn | 626 | Less SFIC | 043156535675 | \$114.00 |
| DB1000-SCT-613-SFIC | Single cylinder x turn | 613 | Less SFIC | 043156535682 | \$129.00 |
| DB1000-DCT-626-KDC | Double cylinder | 626 | 6-pin, Schlage C, KD | 043156535699 | \$149.00 |
| DB1000-DCT-613-KDC | Double cylinder | 613 | 6-pin, Schlage C, KD | 043156535705 | \$166.00 |
| DB1000-DCT-626-SFIC | Double cylinder | 626 | Less SFIC | 043156535712 | \$149.00 |
| DB1000-DCT-613-SFIC | Double cylinder | 613 | Less SFIC | 043156535729 | \$166.00 |

DB2000 SERIES DEADBOLT

- Grade 2, non UL listed 3 hour
- Finishes: 605 (US3) Bright Brass; 626 (US26D) Satin Chrome; 613 (US10B) Oil-Rubbed Bronze; 630 (US32D) = Satin Stainless
- 1-3/8" – 1-3/4" standard cylinderdoor range; 1-5/8" – 2" SFIC door range
- All functions include 2-3/8" x 2-3/4" universal square corner latch (p/n 30-253), 1-1/8" x 2-3/4" square corner lipless strike
- 4WB (4-way bolt) function includes square corner faceplate and drive-in style collar is installed out of box
- Master Carton Quantities: 8 for all UPCs



| Product description | Function | Finish | Cylinder | UPC # | Price |
|---------------------|------------------------|--------|----------------------|--------------|----------|
| DB2000-SCT-626-KDC | Single cylinder x turn | 626 | 6-pin, Schlage C, KD | 043156535736 | \$72.00 |
| DB2000-SCT-630-KDC | Single cylinder x turn | 630 | 6-pin Schlage C, KD | 043156591190 | \$72.00 |
| DB2000-SCT-613-KDC | Single cylinder x turn | 613 | 6-pin, Schlage C, KD | 043156535743 | \$80.00 |
| DB2000-SCT-605-KDC | Single cylinder x turn | 605 | 6-pin, Schlage C, KD | 043156556649 | \$80.00 |
| DB2000-SCT-626-SFIC | Single cylinder x turn | 626 | Less SFIC | 043156535750 | \$72.00 |
| DB2000-SCT-630-SFIC | Single cylinder x turn | 630 | Less SFIC | 043156591206 | \$72.00 |
| DB2000-SCT-613-SFIC | Single cylinder x turn | 613 | Less SFIC | 043156535767 | \$80.00 |
| DB2000-SCT-605-SFIC | Single cylinder x turn | 605 | Less SFIC | 043156556656 | \$80.00 |
| DB2000-DCT-626-KDC | Double cylinder | 626 | 6-pin, Schlage C, KD | 043156535774 | \$93.00 |
| DB2000-DCT-613-KDC | Double cylinder | 613 | 6-pin, Schlage C, KD | 043156535781 | \$105.00 |
| DB2000-DCT-605-KDC | Double cylinder | 605 | 6-pin, Schlage C, KD | 043156556663 | \$105.00 |
| DB2000-DCT-626-SFIC | Double cylinder | 626 | Less SFIC | 043156535798 | \$93.00 |
| DB2000-DCT-613-SFIC | Double cylinder | 613 | Less SFIC | 043156535804 | \$105.00 |
| DB2000-DCT-605-SFIC | Double cylinder | 605 | Less SFIC | 043156556670 | \$105.00 |

LATCHES

- Latch drive-in conversion kits are for use with DB1000 deadbolts only
- Master Carton Quantities: 100 for all UPCs

| Product description | Function | Finish | Cylinder | UPC # | Price |
|---------------------|-------------------|--------|----------|--------------|---------|
| DB2000-4WB-KIT-626 | Replacement latch | 626 | N/A | 043156036530 | \$19.00 |
| DB2000-4WB-KIT-613 | Replacement latch | 613 | N/A | 043156036547 | \$19.00 |

DCH1000 SERIES

- Heavy duty surface door closers
- Grade 1, UL / UL 10C Listed (non-hold open arms)
- Finishes: 689 (ALUM) = Aluminum Paint; 695 (DKBRZ) = Dark Bronze Paint; ADA compliant at size 1
- Adjustable spring size 1-6
- 6-3/4" x 2-3/8" mounting hole pattern
- Staked, independent adjustment values: sweep speed, latch speed, and back-check
- Single piece, cast aluminum body
- Universal hardware pack
- Master Carton Quantities: 4 for all UPCs



| Product description | Arm | Finish | Handing | Cylinder | Cover | UPC # | Price |
|-----------------------------|-------|--------|---------|----------|-------|--------------|----------|
| DCH1000A.STD.FULL.RW/PA.689 | Rw/PA | 689 | - | Std | Full | 043156729043 | \$294.00 |
| DCH1000A.STD.FULL.RW/PA.695 | Rw/PA | 695 | - | Std | Full | 043156729050 | \$294.00 |
| DCH1000A.STD.FULL.HW/PA.689 | Hw/PA | 689 | - | Std | Full | 043156729036 | \$307.00 |
| DCH1000.STD.FULL.DS.689 | DS | 689 | - | Std | Full | 043156535965 | \$327.00 |
| DCH1000A.STD.FULL.DS/HO.689 | DS/HO | 689 | - | Std | Full | 043156729029 | \$345.00 |

DCH4000 SERIES

- Heavy duty surface door closers
- Grade 1, UL/UL10C Compliant (non-hold open arms)
- Finishes: 689 (ALUM) = Aluminum Paint; 695 (DKBRZ) = Dark Bronze Paint; ADA Compliant at Size 1
- Adjustable spring size 1-6
- 5" x 2-1/4" mounting hole pattern
- Staked, independent adjustment values: sweep speed, latch speed and back-check
- Single piece, cast iron body
- Universal hardware pack
- Master Carton Quantities: 2 for all UPCs

| Product description | Arm | Finish | Handing | Cylinder | Cover | UPC # | Price |
|----------------------------|-------|--------|---------|----------|-------|--------------|----------|
| DCH4000.STD.FULL.RW/PA.689 | Rw/PA | 689 | - | Std | Full | 043156976676 | \$329.00 |
| DCH4000.STD.FULL.HW/PA.689 | Hw/PA | 689 | - | Std | Full | 043156976706 | \$357.00 |
| DCH4000.STD.FULL.DS.689 | DS | 689 | - | Std | Full | 043156976683 | \$388.00 |
| DCH4000.STD.FULL.DS/HO.689 | DS/HO | 689 | - | Std | Full | 043156976690 | \$417.00 |
| DCH4000.STD.FULL.RW/PA.695 | Rw/PA | 695 | - | Std | Full | 043156976713 | \$329.00 |
| DCH4000.STD.FULL.HW/PA.695 | Hw/PA | 695 | - | Std | Full | 043156976744 | \$357.00 |
| DCH4000.STD.FULL.DS.695 | DS | 695 | - | Std | Full | 043156976720 | \$388.00 |
| DCH4000.STD.FULL.DS/HO.695 | DS/HO | 695 | - | Std | Full | 043156976737 | \$417.00 |

DCM1000 SERIES

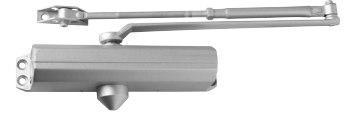
- Medium duty surface door closers
- Grade 1, UL/UL 10C Listed (non-hold open arms)
- Finishes: 689 (ALUM) = Aluminum Paint; 695 (DKBRZ) = Dark Bronze Paint; ADA compliant at size 1
- Adjustable spring size 1-6
- 12" x 3/4" mounting hole pattern
- Staked, independent adjustment values: sweep speed, latch speed, and back-check
- Single piece, cast aluminum body
- Universal hardware pack
- Note: 6 for all Rw/PA UPCs and 4 for all Hw/PA UPCs



| Product description | Arm | Finish | Handing | Cylinder | Cover | UPC # | Price |
|----------------------------|-------|--------|---------|----------|-------|--------------|----------|
| DCM1000.STD.SLIM.RW/PA.689 | Rw/PA | 689 | - | Std | Slim | 043156535859 | \$205.00 |
| DCM1000.STD.SLIM.RW/PA.695 | Rw/PA | 695 | - | Std | Slim | 043156535866 | \$205.00 |
| DCM1000.STD.FULL.RW/PA.689 | Rw/PA | 689 | - | Std | Full | 043156535873 | \$205.00 |
| DCM1000.STD.FULL.RW/PA.695 | Rw/PA | 695 | - | Std | Full | 043156535880 | \$205.00 |
| DCM1000.STD.SLIM.HW/PA.689 | Hw/PA | 689 | - | Std | Slim | 043156535897 | \$250.00 |
| DCM1000.STD.SLIM.HW/PA.695 | Hw/PA | 695 | - | Std | Slim | 043156535903 | \$250.00 |
| DCM1000.STD.FULL.HW/PA.689 | Hw/PA | 689 | - | Std | Full | 043156535910 | \$250.00 |
| DCM1000.STD.FULL.HW/PA.695 | Hw/PA | 695 | - | Std | Full | 043156535927 | \$250.00 |

DCL2000 SERIES

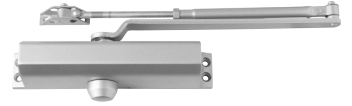
- Light duty surface door closers
- Grade 1, UL/UL 10C Listed (non-hold open arms)
- Finishes: 689 (ALUM) = Aluminum Paint; 695 (DKBRZ) = Dark Bronze Paint; ADA compliant at size 1
- Adjustable spring size 1-6
- 9-1/16" x 3/4" mounting hole pattern
- Independent adjustment values: sweep speed, latch speed, and back-check
- Single piece, cast aluminum body
- Universal hardware pack
- Master Carton Quantities: 4 for all UPCs



| Product description | Arm | Finish | Handing | Cylinder | Cover | UPC # | Price |
|----------------------------|-------|--------|---------|----------|-------|--------------|----------|
| DCL2000.STD.LESS.RW/PA.689 | Rw/PA | 689 | - | Std | Less | 043156535811 | \$164.00 |
| DCL2000.STD.LESS.RW/PA.695 | Rw/PA | 695 | - | Std | Less | 043156535828 | \$164.00 |
| DCL2000.STD.LESS.HW/PA.689 | Hw/PA | 689 | - | Std | Less | 043156535835 | \$209.00 |
| DCL2000.STD.FULL.RW/PA.689 | Rw/PA | 689 | - | Std | Full | 043156535842 | \$175.00 |
| DCL2000.STD.FULL.RW/PA.695 | Rw/PA | 695 | - | Std | Full | 194555222793 | \$175.00 |

DCR8000 SERIES

- Grade 1, UL/UL 10C Listed (non-hold open arms)
- Finishes: 689 (ALUM) = Aluminum Paint;
695 (DKBRZ) = Dark Bronze Paint
- ADA compliant at size 1, (180° - TJ & Pull Side)
- Adjustable spring size 1-4
- 9-1/16" x 3/4" mounting hole pattern
- Master Carton Quantities: 4 for all UPCs



| Product description | Arm | Finish | Handing | Cylinder | Cover | UPC # | Price |
|----------------------------|-------|--------|---------|----------|-------|--------------|----------|
| DCR8000.STD.LESS.RW/PA.689 | Rw/PA | 689 | - | Std | Less | 043156536009 | \$114.00 |
| DCR8000.STD.LESS.RW/PA.695 | Rw/PA | 695 | - | Std | Less | 043156536016 | \$114.00 |

CYLINDRICAL LOCKS

DEADBOLTS

SURFACE DOOR CLOSERS

EXIT DEVICES

MERCHANDISING AIDS

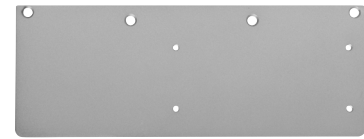
DROP PLATES

- Finishes: 689 (ALUM) = Aluminum Paint; 695 (DKBRZ) = Dark Bronze Paint
- Master Carton Quantities: 10 for all DCL2000 UPCs, 15 for all DCM1000 UPCs, and 12 for all DCH1000 UPCs

DCH1000 Series

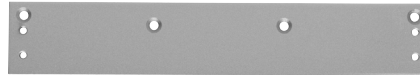


DCH1000
Pull side/top jamb



DCH1000
Parallel arm

DCM1000 Series



DCM1000
Pull side/top jamb



DCM1000
Parallel arm

DCL2000 Series



DCL2000
Top jamb



DCL2000
Parallel arm

| Product description | Plate type | Finish | UPC # | Price |
|----------------------|---------------------|--------|--------------|---------|
| DCL2000P.DP18TJ.689 | Top jamb | 689 | 043156536023 | \$25.00 |
| DCL2000P.DP18PA.689 | Parallel arm | 689 | 043156536030 | \$25.00 |
| DCL2000P.DP18TJ.695 | Top jamb | 695 | 043156536047 | \$25.00 |
| DCL2000P.DP18PA.695 | Parallel arm | 695 | 043156536054 | \$25.00 |
| DCM1000P.DP18TJ.689 | Pull side/ top jamb | 689 | 043156536061 | \$23.00 |
| DCM1000P.DP18PA.689 | Parallel arm | 689 | 043156536078 | \$23.00 |
| DCM1000P.DP18TJ.695 | Pull side/ top jamb | 695 | 043156536085 | \$23.00 |
| DCM1000P.DP18PA.695 | Parallel arm | 695 | 043156536092 | \$23.00 |
| DCH1000P.DP18.689 | Pull side/ top jamb | 689 | 043156536108 | \$27.00 |
| DCH1000AP.DP18PA.689 | Parallel arm | 689 | 043156729098 | \$27.00 |
| DCH1000P.DP18.695 | Pull side/ top jamb | 695 | 043156536122 | \$45.00 |
| DCH1000P.DP18PA.695 | Parallel arm | 695 | 043156536139 | \$45.00 |

Note: DCL2000P drop plates are also compatible with DCR8000 Series closers.

COVERS

| Product description | Finish | UPC # | Price |
|---------------------|--------|--------------|---------|
| DCH4000P-FC-ALUM | 689 | 194555188105 | \$26.00 |
| DCH4000P-FC-DKBRZ | 695 | 194555188112 | \$26.00 |
| DCL2000P-FC-ALUM | 689 | 194555230835 | \$12.00 |
| DCL2000P-FC-DKBRZ | 689 | 194555230842 | \$12.00 |

ED1000 SERIES

- Grade 1, UL listed panic device
- UL Listed 3-hour fire device
- Finishes: 626 (US26D) Satin Chrome; 613 (US10B) Oil-Rubbed Bronze; 630 (US32D) = Satin Stainless
- Master Carton Quantities: 3 for all UPCs



ED1000-R Series Rim Panic Device

| Product description | Trim function | Handing | Finish | Device length | Door height | UPC # | Price |
|------------------------|---------------|---------|--------|---------------|-------------|--------------|----------|
| ED1000-R-EO-3 FT-US26D | Exit only | - | 626 | 3' | - | 043156536351 | \$864.00 |
| ED1000-R-EO-4 FT-US26D | Exit only | - | 626 | 4' | - | 043156536368 | \$886.00 |
| ED1000-R-EO-3 FT-US32D | Exit only | - | 630 | 3' | - | 043156536375 | \$888.00 |
| ED1000-R-EO-4 FT-US32D | Exit only | - | 630 | 4' | - | 043156536382 | \$911.00 |
| ED1000-R-EO-3 FT-US10B | Exit only | - | 613 | 3' | - | 043156536399 | \$949.00 |
| ED1000-R-EO-4 FT-US10B | Exit only | - | 613 | 4' | - | 043156536405 | \$969.00 |

ED1000-R-F Series Rim Fire Exit Hardware

| Product description | Trim function | Handing | Finish | Device length | Door height | UPC # | Price |
|--------------------------|---------------|---------|--------|---------------|-------------|--------------|------------|
| ED1000-R-F-EO-3 FT-US26D | Exit only | - | 626 | 3' | - | 043156536412 | \$1,061.00 |
| ED1000-R-F-EO-3 FT-US10B | Exit only | - | 613 | 3' | - | 043156536429 | \$1,163.00 |

ED1000-V Series Surface Vertical Rod Panic Device

| Product description | Trim function | Handing | Finish | Device length | Door height | UPC # | Price |
|-----------------------------|---------------|---------|--------|---------------|-------------|--------------|------------|
| ED1000-V-EO-3 FT-7'DH-US26D | Exit only | - | 626 | 3' | 7' | 043156536436 | \$1,270.00 |
| ED1000-V-EO-3 FT-7'DH-US10B | Exit only | - | 613 | 3' | 7' | 043156536443 | \$1,347.00 |

ED1000 SERIES TRIM AND ACCESSORIES

- Master Carton Quantities: 12 for all Handle Pull Plate UPCs and 6 for all other UPCs



Escutcheon lever -
Classroom



Escutcheon lever -
Night latch



Escutcheon lever -
Passage blank
escutcheon



Thumbpiece
pull plate -
Classroom



Handle
pull plate -
Night latch

| Product description | Function | Cylinder | Finish | UPC # | Price |
|-----------------------------|---|-----------------------|--------|--------------|----------|
| ED1000T-CLRM-R-ESC-NC-US26D | Escutcheon lever - Classroom | NC (requires mortise) | 626 | 043156536450 | \$562.00 |
| ED1000T-CLRM-R-ESC-NC-US10B | Escutcheon lever - Classroom | NC (requires mortise) | 613 | 043156536467 | \$602.00 |
| ED1000T-NL-R-ESC-NC-US26D | Escutcheon lever - Night latch | NC (requires rim) | 626 | 043156536474 | \$539.00 |
| ED1000T-NL-R-ESC-NC-US10B | Escutcheon lever - Night latch | NC (requires rim) | 613 | 043156536481 | \$578.00 |
| ED1000T-PASS-R-ESC-US26D | Escutcheon lever - Passage blank escutcheon | N/A | 626 | 043156536498 | \$425.00 |
| ED1000T-PASS-R-ESC-US10B | Escutcheon lever - Passage blank escutcheon | N/A | 613 | 043156536504 | \$465.00 |
| ED1000T-CLRM-TP-NC-US26D | Thumbpiece pull plate - Classroom | NC (requires mortise) | 626 | 043156536511 | \$295.00 |
| ED1000T-CLRM-TP-NC-US10B | Thumbpiece pull plate - Classroom | NC (requires mortise) | 613 | 043156536528 | \$334.00 |
| ED1000T-NL-HPUL-NC-US26D | Handle pull plate - Night latch | NC (requires rim) | 626 | 043156536535 | \$193.00 |
| ED1000T-NL-HPUL-NC-US10B | Handle pull plate - Night latch | NC (requires rim) | 613 | 043156536542 | \$233.00 |

NC = No cylinder included

EXTENSION RODS

- Master Carton Quantities: 20 for all UPCs

| Product description | Length | Finish | UPC # | Price |
|---------------------|--------|--------|--------------|---------|
| ED1000-EXTRD-US26D | 12" | 626 | 043156538256 | \$21.00 |
| ED1000-EXTRD-US10B | 12" | 613 | 043156538249 | \$22.00 |

ED1500 SERIES

- Grade 1, UL listed panic device
- UL Listed 3-hour fire rim device
- Finishes: 689 (SP28) = Aluminum Paint; 695 (SP313) = Dark Bronze Paint
- Master Carton Quantities: 3 for all UPCs



ED1500-R Series Rim Panic Device

| Product description | Trim function | Device length | Door height | Finish | UPC # | Price |
|-----------------------|---------------|---------------|-------------|--------|--------------|----------|
| ED1500-R-EO-3FT-SP28 | Exit only | 3' | - | 689 | 043156519415 | \$279.00 |
| ED1500-R-EO-4FT-SP28 | Exit only | 4' | - | 689 | 043156519637 | \$315.00 |
| ED1500-R-EO-3FT-SP313 | Exit only | 3' | - | 695 | 043156963881 | \$279.00 |
| ED1500-R-EO-4FT-SP313 | Exit only | 4' | - | 695 | 043156963898 | \$315.00 |

ED1500-R-F Series Rim Fire Exit Device

| Product description | Trim function | Device length | Door height | Finish | UPC # | Price |
|-------------------------|---------------|---------------|-------------|--------|--------------|----------|
| ED1500-R-F-EO-3FT-SP28 | Exit only | 3' | - | 689 | 043156522996 | \$375.00 |
| ED1500-R-F-EO-3FT-SP313 | Exit only | 3' | - | 695 | 043156963638 | \$375.00 |

ED1500-V Series Surface Vertical Rod Panic Device

| Product description | Trim function | Device length | Door height | Finish | UPC # | Price |
|----------------------------|---------------|---------------|-------------|--------|--------------|----------|
| ED1500-V-EO-3FT-7'DH-SP28 | Exit only | 3' | 7' | 689 | 043156963645 | \$475.00 |
| ED1500-V-EO-3FT-7'DH-SP313 | Exit only | 3' | 7' | 695 | 043156963904 | \$475.00 |

ED1500 SERIES TRIM AND ACCESSORIES

- Master Carton Quantities: 12 for all Handle Pull Plate UPCs and 6 for all other UPCs



Escutcheon lever -
Classroom/
Night latch



Raised lip
pull plate -
Night latch



Raised lip
pull plate -
Dummy



Key-in-lever round rose -
Classroom/Night latch
Less SFIC not shown



Handle
pull plate -
Night latch



Handle
pull plate -
Dummy

| Product description | Function | Cylinder | Finish | UPC # | Price |
|------------------------------|---------------------------------------|-----------------------|--------|--------------|----------|
| ED1500T-CLRM-R-ESC-NC-SP28 | Escutcheon lever - Classroom | NC (requires mortise) | 689 | 043156597550 | \$196.00 |
| ED1500T-CLRM-R-ESC-NC-SP313 | Escutcheon lever - Classroom | NC (requires mortise) | 695 | 043156963652 | \$196.00 |
| ED1500T-NL-R-ESC-NC-SP28 | Escutcheon lever - Night latch | NC (requires mortise) | 689 | 043156597567 | \$196.00 |
| ED1500T-NL-R-ESC-NC-SP313 | Escutcheon lever - Night latch | NC (requires mortise) | 695 | 043156963669 | \$196.00 |
| ED1500T-NL-PULL-NC-SP28 | Raised lip pull plate - Night latch | NC (requires rim) | 689 | 043156963676 | \$45.00 |
| ED1500T-NL-PULL-NC-SP313 | Raised lip pull plate - Night latch | NC (requires rim) | 695 | 043156963683 | \$45.00 |
| ED1500T-DUM-PULL-SP28 | Raised lip pull plate - Dummy | N/A | 689 | 043156963690 | \$29.00 |
| ED1500T-DUM-PULL-SP313 | Raised lip pull plate - Dummy | N/A | 695 | 043156963706 | \$29.00 |
| ED1500T-CLRM-R-KDC-SP28 | Key-in-lever round rose - Classroom | KDC | 689 | 043156963713 | \$161.00 |
| ED1500T-CLRM-R-KDC-SP313 | Key-in-lever round rose - Classroom | KDC | 695 | 043156963720 | \$161.00 |
| ED1500T-NL-R-KDC-SP28 | Key-in-lever round rose - Night latch | KDC | 689 | 043156963737 | \$161.00 |
| ED1500T-NL-R-KDC-SP313 | Key-in-lever round rose - Night latch | KDC | 695 | 043156963744 | \$161.00 |
| ED1500T-CLRM-R-SFIC-SP28 | Key-in-lever round rose - Classroom | Less SFIC | 689 | 043156963751 | \$153.00 |
| ED1500T-NL-R-SFIC-SP28 | Key-in-lever round rose - Night latch | Less SFIC | 689 | 043156963768 | \$153.00 |
| ED1500T-NL-PULL-ESC-NC-SP28 | Handle pull plate - Night latch | NC (requires rim) | 689 | 043156963775 | \$117.00 |
| ED1500T-NL-PULL-ESC-NC-SP313 | Handle pull plate - Night latch | NC (requires rim) | 695 | 043156963782 | \$117.00 |
| ED1500T-DUM-PULL-ESC-SP28 | Handle pull plate - Dummy | N/A | 689 | 043156963799 | \$117.00 |
| ED1500T-DUM-PULL-ESC-SP313 | Handle pull plate - Dummy | N/A | 695 | 043156963805 | \$117.00 |

NC = No cylinder included

KDC = KIL Cylinder, Schlage C Keyway, Keyed Differently

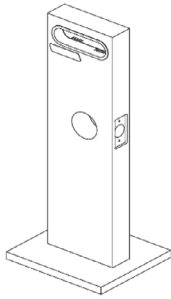
EXTENSION RODS

- Master Carton Quantities: 20 for all UPCs

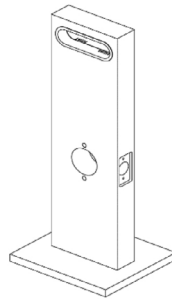
| Product description | Length | Finish | UPC # | Price |
|---------------------|--------|--------|--------------|---------|
| ED1500-EXTRD-SP28 | 12" | 689 | 043156963812 | \$16.00 |
| ED1500-EXTRD-SP313 | 12" | 695 | 043156963829 | \$16.00 |

MERCHANDISING AIDS

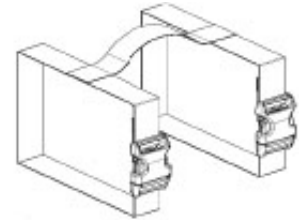
DEXTER COMMERCIAL WHITE WOOD MOUNTS



47284871



47284872



47286238

DISPLAY MOUNTS

| Part No. | Description | Dimension (inches) | | | | | Price |
|----------|--|--------------------|--------|-----------------|--------------|---------------|----------|
| | | Backset | Bore | Faceplate width | Total height | Width at base | |
| 47284871 | Display mount, deadbolt, knob and keypad mount | 2-3/8" | 2-1/8" | 1" | 19-7/8" | 8" | \$232.00 |
| 47284872 | Display mount, cylindrical mount | 2-3/4" | 2-1/8" | 1-1/8" | 19-7/8" | 8" | \$232.00 |
| 47286238 | Mount carton carrying strap | - | - | - | - | - | \$28.90 |

Note: Price does not include lock.

this page intentionally blank

About Allegion

Allegion (NYSE: ALLE) is a global pioneer in seamless access. We keep people and their assets safe, wherever they are, bringing together simple solutions, convenient access and advanced technology.

For more, visit www.allegion.com

KRYPTONITE ■ LCN ■  ■ STEELCRAFT ■ VON DUPRIN