



Product Bulletin

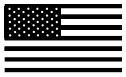
Brand/product:	Dexter Commercial
Date:	October, 2023
Subject:	October 2023 Price Book Updates

Dexter Lock Accessories

Page 11: Updated finish for Grade 1 Strikes

Dexter Drop Plates

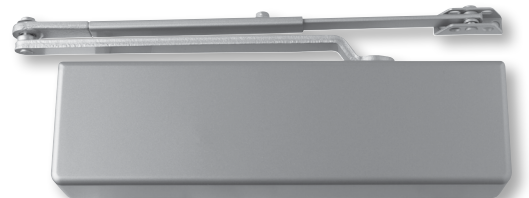
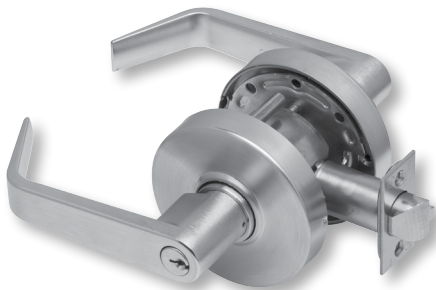
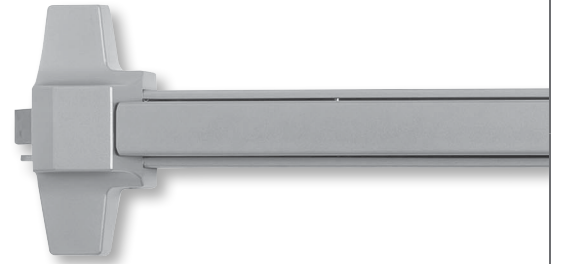
Page 17: Added DCH4000 plastic covers to price book



DEXTER[®]
COMMERCIAL HARDWARE

Price book 6

Effective February 25, 2023 • Rev. 10/23



Customer Care

Our Customer Care Representatives are available for questions or assistance.

877-671-7011

Customer service

- ☎ Press 1
- ✉ support@allegion.com

Technical product support

- ☎ Press 2
- Mechanical Locks/Keying Systems**
- ✉ Mechanical_Locks_TechProdSupport@allegion.com
- Exit Devices**
- ✉ Exits_TechProdSupport@allegion.com
- Closers**
- ✉ Closers_TechProdSupport@allegion.com

For new projects or to locate an authorized distributor

- ☎ Press 3

Templates and install instructions

www.dextercommercialhardware.com

Sales support

support@allegion.com

Administrative offices

Allegion administrative office

11819 N. Pennsylvania St.
Carmel, IN 46032
allegion.com/us

Request for quote

Carolinas

(North Carolina, South Carolina, Virginia)
Carolinas.Quotes@allegion.com

Central

(Illinois, Iowa, Kansas, Missouri, Nebraska)
Central.Quotes@allegion.com

Chicago

(Northern Illinois, Wisconsin)
Chicago.Quotes@allegion.com

Florida

Florida.Quotes@allegion.com

Metro New York

(Metro New York, Northern New Jersey)
Metro.Quotes@allegion.com

Michigan

Michigan.Quotes@allegion.com

Mid Atlantic North

(New York, Western Pennsylvania)
Mid.Atlantic.North.Quotes@allegion.com

Mid Atlantic South

(Delaware, Eastern Pennsylvania, Maryland, Northern Virginia, Southern New Jersey, Washington DC)
Mid.Atlantic.South.Quotes@allegion.com

Midwest

(Indiana, Kentucky, Ohio, West Virginia)
Midwest.Quotes@allegion.com

Mountain States

(Colorado, Idaho, Montana, Nevada, Utah, Wyoming)
Mtn.States.Quotes@allegion.com

New England

(Connecticut, Maine, Massachusetts, New Hampshire, Rhode Island, Vermont)
NewEngland.Quotes@allegion.com

North Central

(Minnesota, North Dakota, South Dakota)
NorthCentral.Quotes@allegion.com

Northern California

NoCal.Quotes@allegion.com

Northwest

(Alaska, Oregon, Washington)
Northwest.Quotes@allegion.com

South

(Alabama, Georgia, Louisiana, Mississippi, Tennessee)
South.Quotes@allegion.com

Southern California

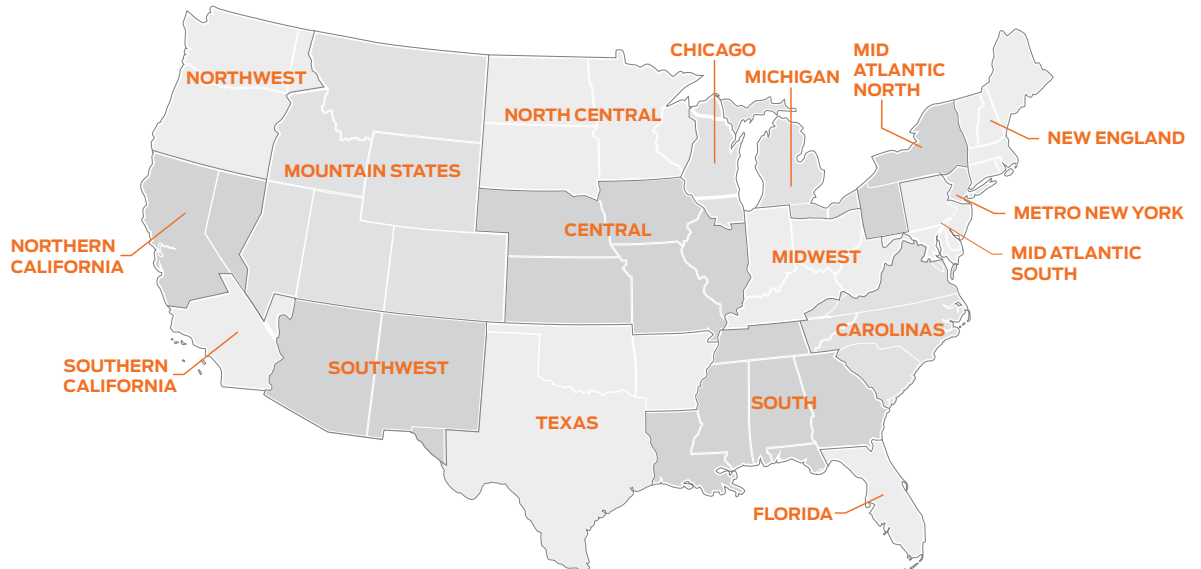
(Southern California, Hawaii)
SoCal.Quotes@allegion.com

Southwest

(Arizona, New Mexico)
Southwest.Quotes@allegion.com

Texas

(Arkansas, Texas, Oklahoma)
Texas.Quotes@allegion.com



Contents

Cylindrical locks..... 6	Exit devices..... 18
C1000 Series Cylindrical Lock 6	ED1000 Series 18
C2000 Series Cylindrical Lock 8	ED1000 Series Trim and accessories 19
Lock accessories..... 11	ED1500 Series 20
	ED1500 Series Trim and accessories..... 21
Deadbolts 12	Merchandising aids 22
DB1000 Series Deadbolt..... 12	
DB2000 Series Deadbolt..... 13	
Latches 13	
Surface door closers..... 14	
DCH1000 Series..... 14	
DCH4000 Series 14	
DCM1000 Series 15	
DCL2000 Series..... 15	
DCR8000 Series..... 16	
Drop plates 17	

Policies and documents

The purchase of Allegion products is governed by the Allegion Authorized Seller Program. For program terms and conditions, and other program details, please visit: www.allegion.com/AuthorizedSeller.

For Warranty information, visit us.allegion.com/warranty or contact Customer Service at 877-671-7011.

FINISH CROSS-REFERENCE GUIDE

Allegion now uses BHMA codes to identify finishes across all product lines.

Previous Code	BHMA Code	Name	Substrate
32-316	629-316	Bright Stainless	Steel
32D-316	630-316	Satin Stainless	Steel
606	606	Satin Brass	Brass
613	613	Oil-Rubbed Bronze	Bronze
618	618	Polished Nickel	Brass, Bronze
619	619	Satin Nickel	Brass, Bronze
622	622	Matte Black	Brass, Bronze
626	626	Satin Chrome	Brass, Bronze
630	630	Satin Stainless	Stainless steel
689	689	Aluminum Paint	Any
A15	619	Satin Nickel	Brass, Bronze
A92	673	Aluminum, Clear Coated	Aluminum
ALUM	689	Aluminum Paint	Any
B3	605	Bright Brass	Brass
B10B	613	Oil-Rubbed Bronze	Bronze
B15	619	Satin Nickel	Brass, Bronze
B26D	626	Satin Chrome	Brass, Bronze
B-613	613	Oil-Rubbed Bronze	Bronze
B-619	619	Satin Nickel	Brass, Bronze
Black Prime	693	Black Paint	Any
DKBRZ	695	Dark Bronze Paint	Any
DC13	710	Dark Brown	Anodized
F14	618	Polished Nickel	Brass, Bronze
F15	619	Satin Nickel	Brass, Bronze
F26D	626	Satin Chrome	Brass, Bronze
F619E	619	Satin Nickel	Brass, Bronze
MTBLK	622	Matte Black	Brass, Bronze
P13	695	Dark Bronze Paint	Any
P28	689	Aluminum Paint	Any
P35	693	Black Paint	Any
SP28	628	Aluminum, Clear Anodized	Aluminum
SP28	689	Aluminum Paint	Any
SP313	695	Dark Bronze Paint	Any
US2C	602	Zinc Plated "C"	Steel
US2G	603	Zinc Plated "G"	Steel
US3	632	Bright Brass	Steel
US4	633	Satin Brass	Steel
US10	639	Satin Bronze	Steel
US10B	613	Oil-Rubbed Bronze	Bronze
US15	619	Satin Nickel	Brass, Bronze
US15	646	Satin Nickel	Steel
US26D	626	Satin Chrome	Brass, Bronze
US26D	652	Satin Chrome	Steel
US27	627	Satin Aluminum, Clear Coated	Aluminum
US28	628	Aluminum, Clear Anodized	Aluminum
US32D	630	Satin Stainless	Stainless steel
USP	600	Primed for Painting	Steel

this page intentionally blank

C1000 SERIES CYLINDRICAL LOCK

- Grade 1, UL listed 3 hour
- Finishes: 626 (US26D) Satin Chrome; 613 (US10B) Oil-Rubbed Bronze
- 1-3/8" to 2" door range standard
- All functions include 1-1/8" x 2-1/4" square-corner beveled latch with 2-3/4" backset and ANSI 1-1/4" x 4-7/8" curved lip strike
- Accommodates Schlage conventional 6-pin (keyed 6) cylinders in Schlage C keyway, keyed different
- Accommodates SFIC to accept 6-pin/7-pin
- Master Carton Quantities: 4 for all UPCs



Product description	Lever feature	Function	Trim	Finish	Cylinder	UPC #	Price
C1000-PASS-R-626	Non-clutching	Passage (F75)	Regular	626	N/A	043156534692	\$227.00
C1000-PASS-R-613	Non-clutching	Passage (F75)	Regular	613	N/A	043156534708	\$252.00
C1000-PASS-C-626	Non-clutching	Passage (F75)	Curved	626	N/A	043156534715	\$227.00
C1000-PASS-C-613	Non-clutching	Passage (F75)	Curved	613	N/A	043156534722	\$252.00
C1000-PRIV-R-626	Non-clutching	Privacy (F76)	Regular	626	N/A	043156534739	\$245.00
C1000-PRIV-R-613	Non-clutching	Privacy (F76)	Regular	613	N/A	043156534746	\$273.00
C1000-PRIV-C-626	Non-clutching	Privacy (F76)	Curved	626	N/A	043156534753	\$245.00
C1000-PRIV-C-613	Non-clutching	Privacy (F76)	Curved	613	N/A	043156534760	\$273.00
C1000-ASYL-R-626-KDC	Clutching	Asylum (F87)	Regular	626	6-pin, Schlage C, KD	043156534777	\$307.00
C1000-ASYL-C-626-KDC	Clutching	Asylum (F87)	Curved	626	6-pin, Schlage C, KD	043156534784	\$307.00
C1000-ENTR-R-626-KDC	Clutching	Entry/Office (F109)	Regular	626	6-pin, Schlage C, KD	043156534791	\$255.00
C1000-NC-ENTR-R-626-KDC	Non-clutching	Entry/Office (F109)	Regular	626	6-pin, Schlage C, KD	043156557905	\$255.00
C1000-ENTR-R-613-KDC	Clutching	Entry/Office (F109)	Regular	613	6-pin, Schlage C, KD	043156534807	\$286.00
C1000-ENTR-R-626-SFIC	Clutching	Entry/Office (F109)	Regular	626	Less SFIC	043156534814	\$255.00
C1000-NC-ENTR-R-626-SFIC	Non-clutching	Entry/Office (F109)	Regular	626	Less SFIC	043156557912	\$255.00
C1000-ENTR-R-613-SFIC	Clutching	Entry/Office (F109)	Regular	613	Less SFIC	043156534869	\$286.00
C1000-ENTR-C-626-KDC	Clutching	Entry/Office (F109)	Curved	626	6-pin, Schlage C, KD	043156534838	\$255.00
C1000-ENTR-C-613-KDC	Clutching	Entry/Office (F109)	Curved	613	6-pin, Schlage C, KD	043156534845	\$286.00
C1000-ENTR-C-626-SFIC	Clutching	Entry/Office (F109)	Curved	626	Less SFIC	043156534852	\$255.00
C1000-ENTR-C-613-SFIC	Clutching	Entry/Office (F109)	Curved	613	Less SFIC	043156534821	\$286.00
C1000-CLRM-R-626-KDC	Clutching	Classroom (F84)	Regular	626	6-pin, Schlage C, KD	043156534876	\$255.00
C1000-CLRM-R-613-KDC	Clutching	Classroom (F84)	Regular	613	6-pin, Schlage C, KD	043156534883	\$286.00
C1000-CLRM-R-626-SFIC	Clutching	Classroom (F84)	Regular	626	Less SFIC	043156534890	\$255.00
C1000-CLRM-R-613-SFIC	Clutching	Classroom (F84)	Regular	613	Less SFIC	043156534906	\$286.00
C1000-CLRM-C-626-KDC	Clutching	Classroom (F84)	Curved	626	6-pin, Schlage C, KD	043156534913	\$255.00
C1000-CLRM-C-613-KDC	Clutching	Classroom (F84)	Curved	613	6-pin, Schlage C, KD	043156534920	\$286.00
C1000-CLRM-C-626-SFIC	Clutching	Classroom (F84)	Curved	626	Less SFIC	043156534937	\$255.00
C1000-CLRM-C-613-SFIC	Clutching	Classroom (F84)	Curved	613	Less SFIC	043156534944	\$286.00
C1000-CSEC-R-626-KDC	Clutching	Classroom Security (F88)	Regular	626	6-pin, Schlage C, KD	043156534951	\$307.00
C1000-CSEC-R-613-KDC	Clutching	Classroom Security (F88)	Regular	613	6-pin, Schlage C, KD	043156534968	\$345.00
C1000-CSEC-R-626-SFIC	Clutching	Classroom Security (F88)	Regular	626	Less SFIC	043156534975	\$348.00
C1000-CSEC-R-613-SFIC	Clutching	Classroom Security (F88)	Regular	613	Less SFIC	043156534982	\$345.00
C1000-CSEC-C-626-KDC	Clutching	Classroom Security (F88)	Curved	626	6-pin, Schlage C, KD	043156534999	\$307.00
C1000-CSEC-C-613-KDC	Clutching	Classroom Security (F88)	Curved	613	6-pin, Schlage C, KD	043156535002	\$345.00
C1000-CSEC-C-626-SFIC	Clutching	Classroom Security (F88)	Curved	626	Less SFIC	043156535019	\$231.00
C1000-CSEC-C-613-SFIC	Clutching	Classroom Security (F88)	Curved	613	Less SFIC	043156535026	\$345.00
C1000-STRM-R-626-KDC	Clutching	Storeroom (F86)	Regular	626	6-pin, Schlage C, KD	043156535033	\$255.00
C1000-NC-STRM-R-626-KDC	Non-clutching	Storeroom (F86)	Regular	626	6-pin, Schlage C, KD	043156557882	\$255.00

C1000 SERIES CYLINDRICAL LOCK

Product description	Lever feature	Function	Trim	Finish	Cylinder	UPC #	Price
C1000-STRM-R-613-KDC	Clutching	Storeroom (F86)	Regular	613	6-pin, Schlage C, KD	043156535040	\$286.00
C1000-STRM-R-626-SFIC	Clutching	Storeroom (F86)	Regular	626	Less SFIC	043156535057	\$255.00
C1000-NC-STRM-R-626-SFIC	Non-clutching	Storeroom (F86)	Regular	626	Less SFIC	043156557899	\$255.00
C1000-STRM-R-613-SFIC	Clutching	Storeroom (F86)	Regular	613	Less SFIC	043156535064	\$286.00
C1000-STRM-C-626-KDC	Clutching	Storeroom (F86)	Curved	626	6-pin, Schlage C, KD	043156535071	\$255.00
C1000-STRM-C-613-KDC	Clutching	Storeroom (F86)	Curved	613	6-pin, Schlage C, KD	043156535088	\$286.00
C1000-STRM-C-626-SFIC	Clutching	Storeroom (F86)	Curved	626	Less SFIC	043156535095	\$255.00
C1000-STRM-C-613-SFIC	Clutching	Storeroom (F86)	Curved	613	Less SFIC	043156535101	\$286.00

C2000 SERIES CYLINDRICAL LOCK

- Grade 2, UL listed 3 hour
- Finishes: 626 (US26D) Satin Chrome; 613 (US10B) Oil-Rubbed Bronze; 630 (US32D) = Satin Stainless
- 1-3/8" to 1-3/4" door range standard
- All functions include 1-1/8" x 2-1/4" square-corner beveled latch with 2-3/4" backset and 1-1/4" x 4-7/8" curved lip strike
- Brass (605) ball knobs come packaged with square-corner beveled latch with 2-3/8" backset and ANSI 1-1/4" x 2-1/4" T-Strike standard
- Master Carton Quantities: 8 for Single Dummy UPCs and 4 for all other UPCs



Product description	Lever Feature	Function	Trim	Finish	Cylinder	UPC #	Price
C2000-SDUM-R-626	Non-clutching	Single dummy trim	Regular	626	N/A	043156535118	\$52.00
C2000-SDUM-R-613	Non-clutching	Single dummy trim	Regular	613	N/A	043156535125	\$57.00
C2000-SDUM-R-605	Non-clutching	Single dummy trim	Regular	605	N/A	043156556489	\$57.00
C2000-SDUM-C-626	Non-clutching	Single dummy trim	Curved	626	N/A	043156535132	\$52.00
C2000-SDUM-C-613	Non-clutching	Single dummy trim	Curved	613	N/A	043156535149	\$57.00
C2000-SDUM-B-630	Non-clutching	Single dummy trim	Ball	630	N/A	043156535156	\$24.00
C2000-SDUM-B-613	Non-clutching	Single dummy trim	Ball	613	N/A	043156535163	\$28.00
C2000-PASS-R-626	Non-clutching	Passage (F75)	Regular	626	N/A	043156535170	\$113.00
C2000-PASS-R-613	Non-clutching	Passage (F75)	Regular	613	N/A	043156535187	\$127.00
C2000-PASS-R-605	Non-clutching	Passage (F75)	Regular	605	N/A	043156556496	\$127.00
C2000-PASS-C-626	Non-clutching	Passage (F75)	Curved	626	N/A	043156535194	\$113.00
C2000-PASS-C-613	Non-clutching	Passage (F75)	Curved	613	N/A	043156535200	\$127.00
C2000-PASS-B-630	Non-clutching	Passage (F75)	Ball	630	N/A	043156535217	\$59.00
C2000-PASS-B-613	Non-clutching	Passage (F75)	Ball	613	N/A	043156535224	\$68.00
C2000-PASS-B-605	Non-clutching	Passage (F75)	Ball	605	N/A	043156556519	\$68.00
C2000-PRIV-R-626	Non-clutching	Privacy (F76)	Regular	626	N/A	043156535231	\$118.00
C2000-PRIV-R-613	Non-clutching	Privacy (F76)	Regular	613	N/A	043156535248	\$133.00
C2000-PRIV-R-605	Non-clutching	Privacy (F76)	Regular	605	N/A	043156556502	\$133.00
C2000-PRIV-C-626	Non-clutching	Privacy (F76)	Curved	626	N/A	043156535255	\$118.00
C2000-PRIV-C-613	Non-clutching	Privacy (F76)	Curved	613	N/A	043156535262	\$133.00
C2000-PRIV-B-630	Non-clutching	Privacy (F76)	Ball	630	N/A	043156535279	\$61.00
C2000-PRIV-B-613	Non-clutching	Privacy (F76)	Ball	613	N/A	043156535286	\$69.00
C2000-PRIV-B-605	Non-clutching	Privacy (F76)	Ball	605	N/A	043156556526	\$69.00
C2000-ENTR-R-626-KDC	Non-clutching	Entry/Office (F109)	Regular	626	6-pin, Schlage C, KD	043156535293	\$125.00
C2000-ENTR-R-613-KDC	Non-clutching	Entry/Office (F109)	Regular	613	6-pin, Schlage C, KD	043156535309	\$140.00
C2000-ENTR-R-605-KDC	Non-clutching	Entry/Office (F109)	Regular	605	6-pin, Schlage C, KD	043156556588	\$140.00
C2000-CL-ENTR-R-626-KDC	Clutching	Entry/Office (F109)	Regular	626	6-pin, Schlage C, KD	043156642908	\$140.00
C2000-CL-ENTR-R-613-KDC	Clutching	Entry/Office (F109)	Regular	613	6-pin, Schlage C, KD	043156642915	\$147.00
C2000-ENTR-R-626-SFIC	Non-clutching	Entry/Office (F109)	Regular	626	Less SFIC	043156535316	\$125.00
C2000-ENTR-R-613-SFIC	Non-clutching	Entry/Office (F109)	Regular	613	Less SFIC	043156535323	\$140.00
C2000-ENTR-R-605-SFIC	Non-clutching	Entry/Office (F109)	Regular	605	Less SFIC	043156556595	\$140.00
C2000-CL-ENTR-R-626-SFIC	Clutching	Entry/Office (F109)	Regular	626	Less SFIC	043156642922	\$140.00
C2000-CL-ENTR-R-613-SFIC	Clutching	Entry/Office (F109)	Regular	613	Less SFIC	043156642939	\$147.00
C2000-ENTR-C-626-KDC	Non-clutching	Entry/Office (F109)	Curved	626	6-pin, Schlage C, KD	043156535330	\$125.00
C2000-ENTR-C-613-KDC	Non-clutching	Entry/Office (F109)	Curved	613	6-pin, Schlage C, KD	043156535347	\$140.00
C2000-CL-ENTR-C-626-KDC	Clutching	Entry/Office (F109)	Curved	626	6-pin, Schlage C, KD	043156642946	\$140.00
C2000-CL-ENTR-C-613-KDC	Clutching	Entry/Office (F109)	Curved	613	6-pin, Schlage C, KD	043156642953	\$147.00
C2000-ENTR-C-626-SFIC	Non-clutching	Entry/Office (F109)	Curved	626	Less SFIC	043156535354	\$125.00

C2000 SERIES CYLINDRICAL LOCK

Product description	Lever Feature	Function	Trim	Finish	Cylinder	UPC #	Price
C2000-ENTR-C-613-SFIC	Non-clutching	Entry/Office (F109)	Curved	613	Less SFIC	043156535361	\$140.00
C2000-CL-ENTR-C-626-SFIC	Clutching	Entry/Office (F109)	Curved	626	Less SFIC	043156642960	\$140.00
C2000-CL-ENTR-C-613-SFIC	Clutching	Entry/Office (F109)	Curved	613	Less SFIC	043156642977	\$147.00
C2000-ENTR-B-630-KDC	Non-clutching	Entry/Office (F109)	Ball	630	6-pin, Schlage C, KD	043156535378	\$74.00
C2000-ENTR-B-613-KDC	Non-clutching	Entry/Office (F109)	Ball	613	6-pin, Schlage C, KD	043156535385	\$83.00
C2000-ENTR-B-605-KDC	Non-clutching	Entry/Office (F109)	Ball	605	6-pin, Schlage C, KD	043156556533	\$83.00
C2000-ENTR-B-630-SFIC	Non-clutching	Entry/Office (F109)	Ball	630	Less SFIC	043156535392	\$74.00
C2000-ENTR-B-613-SFIC	Non-clutching	Entry/Office (F109)	Ball	613	Less SFIC	043156535408	\$83.00
C2000-ENTR-B-605-SFIC	Non-clutching	Entry/Office (F109)	Ball	605	Less SFIC	043156556540	\$84.00
C2000-CLRM-R-626-KDC	Non-clutching	Classroom (F84)	Regular	626	6-pin, Schlage C, KD	043156535415	\$125.00
C2000-CLRM-R-613-KDC	Non-clutching	Classroom (F84)	Regular	613	6-pin, Schlage C, KD	043156535422	\$127.00
C2000-CLRM-R-605-KDC	Non-clutching	Classroom (F84)	Regular	605	6-pin, Schlage C, KD	043156556625	\$127.00
C2000-CL-CLRM-R-626-KDC	Clutching	Classroom (F84)	Regular	626	6-pin, Schlage C, KD	043156642984	\$140.00
C2000-CL-CLRM-R-613-KDC	Clutching	Classroom (F84)	Regular	613	6-pin, Schlage C, KD	043156642991	\$147.00
C2000-CLRM-R-626-SFIC	Non-clutching	Classroom (F84)	Regular	626	Less SFIC	043156535439	\$125.00
C2000-CLRM-R-613-SFIC	Non-clutching	Classroom (F84)	Regular	613	Less SFIC	043156535446	\$127.00
C2000-CLRM-R-605-SFIC	Non-clutching	Classroom (F84)	Regular	605	Less SFIC	043156556632	\$127.00
C2000-CL-CLRM-R-626-SFIC	Clutching	Classroom (F84)	Regular	626	Less SFIC	043156643004	\$140.00
C2000-CL-CLRM-R-613-SFIC	Clutching	Classroom (F84)	Regular	613	Less SFIC	043156643011	\$147.00
C2000-CLRM-C-626-KDC	Non-clutching	Classroom (F84)	Curved	626	6-pin, Schlage C, KD	043156535453	\$125.00
C2000-CLRM-C-613-KDC	Non-clutching	Classroom (F84)	Curved	613	6-pin, Schlage C, KD	043156535460	\$127.00
C2000-CL-CLRM-C-626-KDC	Clutching	Classroom (F84)	Curved	626	6-pin, Schlage C, KD	043156643028	\$140.00
C2000-CL-CLRM-C-613-KDC	Clutching	Classroom (F84)	Curved	613	6-pin, Schlage C, KD	043156643035	\$147.00
C2000-CLRM-C-626-SFIC	Non-clutching	Classroom (F84)	Curved	626	Less SFIC	043156535477	\$125.00
C2000-CLRM-C-613-SFIC	Non-clutching	Classroom (F84)	Curved	613	Less SFIC	043156535484	\$127.00
C2000-CL-CLRM-C-626-SFIC	Clutching	Classroom (F84)	Curved	626	Less SFIC	043156643042	\$140.00
C2000-CL-CLRM-C-613-SFIC	Clutching	Classroom (F84)	Curved	613	Less SFIC	043156643059	\$147.00
C2000-CLRM-B-630-KDC	Non-clutching	Classroom (F84)	Ball	630	6-pin, Schlage C, KD	043156535491	\$74.00
C2000-CLRM-B-613-KDC	Non-clutching	Classroom (F84)	Ball	613	6-pin, Schlage C, KD	043156535507	\$83.00
C2000-CLRM-B-605-KDC	Non-clutching	Classroom (F84)	Ball	605	6-pin, Schlage C, KD	043156556557	\$83.00
C2000-CLRM-B-630-SFIC	Non-clutching	Classroom (F84)	Ball	630	Less SFIC	043156535514	\$74.00
C2000-CLRM-B-613-SFIC	Non-clutching	Classroom (F84)	Ball	613	Less SFIC	043156535521	\$83.00
C2000-STRM-R-626-KDC	Non-clutching	Storeroom (F86)	Regular	626	6-pin, Schlage C, KD	043156535538	\$125.00
C2000-STRM-R-613-KDC	Non-clutching	Storeroom (F86)	Regular	613	6-pin, Schlage C, KD	043156535545	\$140.00
C2000-STRM-R-605-KDC	Non-clutching	Storeroom (F86)	Regular	605	6-pin, Schlage C, KD	043156556601	\$140.00
C2000-CL-STRM-R-626-KDC	Clutching	Storeroom (F86)	Regular	626	6-pin, Schlage C, KD	043156643066	\$140.00
C2000-CL-STRM-R-613-KDC	Clutching	Storeroom (F86)	Regular	613	6-pin, Schlage C, KD	043156643073	\$147.00
C2000-STRM-R-626-SFIC	Non-clutching	Storeroom (F86)	Regular	626	Less SFIC	043156535552	\$125.00
C2000-STRM-R-613-SFIC	Non-clutching	Storeroom (F86)	Regular	613	Less SFIC	043156535569	\$140.00
C2000-STRM-R-605-SFIC	Non-clutching	Storeroom (F86)	Regular	605	Less SFIC	043156556618	\$140.00
C2000-CL-STRM-R-626-SFIC	Clutching	Storeroom (F86)	Regular	626	Less SFIC	043156643080	\$140.00
C2000-CL-STRM-R-613-SFIC	Clutching	Storeroom (F86)	Regular	613	Less SFIC	043156643097	\$147.00
C2000-STRM-C-626-KDC	Non-clutching	Storeroom (F86)	Curved	626	6-pin, Schlage C, KD	043156535576	\$125.00

C2000 SERIES CYLINDRICAL LOCK

Product description	Lever Feature	Function	Trim	Finish	Cylinder	UPC #	Price
C2000-STRM-C-613-KDC	Non-clutching	Storeroom (F86)	Curved	613	6-pin, Schlage C, KD	043156535583	\$140.00
C2000-CL-STRM-C-626-KDC	Clutching	Storeroom (F86)	Curved	626	6-pin, Schlage C, KD	043156643103	\$140.00
C2000-CL-STRM-C-613-KDC	Clutching	Storeroom (F86)	Curved	613	6-pin, Schlage C, KD	043156643110	\$147.00
C2000-STRM-C-626-SFIC	Non-clutching	Storeroom (F86)	Curved	626	Less SFIC	043156535590	\$125.00
C2000-STRM-C-613-SFIC	Non-clutching	Storeroom (F86)	Curved	613	Less SFIC	043156535606	\$140.00
C2000-CL-STRM-C-626-SFIC	Clutching	Storeroom (F86)	Curved	626	Less SFIC	043156643127	\$140.00
C2000-CL-STRM-C-613-SFIC	Clutching	Storeroom (F86)	Curved	613	Less SFIC	043156643134	\$147.00
C2000-STRM-B-630-KDC	Non-clutching	Storeroom (F86)	Ball	630	6-pin, Schlage C, KD	043156535613	\$74.00
C2000-STRM-B-613-KDC	Non-clutching	Storeroom (F86)	Ball	613	6-pin, Schlage C, KD	043156535620	\$84.00
C2000-STRM-B-605-KDC	Non-clutching	Storeroom (F86)	Ball	605	6-pin, Schlage C, KD	043156556564	\$84.00
C2000-STRM-B-630-SFIC	Non-clutching	Storeroom (F86)	Ball	630	Less SFIC	043156535637	\$74.00
C2000-STRM-B-613-SFIC	Non-clutching	Storeroom (F86)	Ball	613	Less SFIC	043156535644	\$84.00
C2000-STRM-B-605-SFIC	Non-clutching	Storeroom (F86)	Ball	605	Less SFIC	043156556571	\$84.00

LATCHES

- Finishes: 626 (US26D) Satin Chrome; 613 (US10B) Oil-Rubbed Bronze; 630 (US32D) = Satin Stainless
- Latches are square corner
- 1" x 2-1/4" Backsets available in 2-3/8" and 2-3/4"
- Products with "234" in the description represent a 2-3/4" backset
- Master Carton Quantities: 20 for all UPCs

Grade 1 Latches

Product description	Function	Latch type	Finish	UPC #	Price
C1000-SL-630	Passage, Privacy	Spring latch	630	043156538034	\$25.00
C1000-DL-630	Entry/Office, Classroom, Classroom Security, Storeroom	Deadlatch	630	043156538041	\$25.00
C1000-SL-234-630	Passage, Privacy	Spring latch	630	043156656059	\$25.00
C1000-DL-234-630	Entry/Office, Classroom, Classroom Security, Storeroom	Deadlatch	630	043156643158	\$25.00

Grade 2 Latches

Product description	Function	Latch type	Finish	UPC #	Price
C2000-SL-613	Passage, Privacy	Spring latch	613	043156538065	\$16.00
C2000-SL-605	Passage, Privacy	Spring latch	605	043156556687	\$16.00
C2000-SL-234-630	Passage, Privacy	Spring latch	630	043156656066	\$16.00
C2000-DL-613	Entry/Office, Classroom, Storeroom	Deadlatch	613	043156538072	\$16.00
C2000-DL-605	Entry/Office, Classroom, Storeroom	Deadlatch	605	043156556694	\$16.00
C2000-DL-234-605	Entry/Office, Classroom, Storeroom	Deadlatch	605	043156558414	\$16.00
C2000-DL-234-630	Entry/Office, Classroom, Storeroom	Deadlatch	630	043156643165	\$16.00
C2000-SL-630	Passage, Privacy	Spring latch	630	043156538089	\$16.00
C2000-SL-234-605	Passage, Privacy	Spring latch	605	043156558407	\$16.00
C2000-DL-630	Entry/Office, Classroom, Storeroom	Deadlatch	630	043156538096	\$16.00

STRIKES

- Finishes: 605 (US3) Bright Brass; 613 (US10B) Oil-Rubbed Bronze; 630 (US32D) = Satin Stainless
- Master Carton Quantities: 20 for all UPCs

Grade 1 Strikes

- Radius corner, full lip strike, 1-3/4" x 2-1/4", 630 standard finish

Product description	Function	Finish	UPC #	Price
C1000-RCFLS-626	Radius corner, full lip strike, 1-3/4" x 2-1/4"	626	043156538058	\$4.00

Grade 2 Strikes

- Radius corner, full lip strike, 630 standard finish

Product description	Function	Finish	UPC #	Price
C2000-RCFLS-613	Radius corner, full lip strike, 1-5/8" x 2-1/4"	613	043156538102	\$4.00
C2000-RCFLS-630	Radius corner, full lip strike, 1-5/8" x 2-1/4"	630	043156538119	\$4.00
C2000-ACLS-605	ANSI, curved lip strike, 1-1/4" x 4-7/8" (30-148)	605	043156556700	\$6.00

TAILPIECES

- Master Carton Quantities: 100 for all UPCs

Product description	Function	Finish	Cylinder	UPC #	Price
C2000-TP-SFIC	Extra Tailpiece, Less SFIC	N/A	N/A	043156643141	\$3.00
DB2000-TP-SFIC	Extra Tailpiece, Less SFIC	N/A	N/A	043156642809	\$12.00
DB2000-TP	Extra Tailpiece	N/A	N/A	043156642816	\$2.00

DB1000 SERIES DEADBOLT

- Grade 1, non UL listed 3 hour
- Finishes: 626 (US26D) Satin Chrome; 613 (US10B) Oil-Rubbed Bronze
- 1-3/8" - 1-7/8" standard cylinder door range; 1-5/8" - 2" SFIC door range
- All functions include 2-3/8" x 2-3/4" universal square corner latch (p/n 30-253), 1-1/8" x 2-3/4" square corner lipless strike

- 4WB-KIT contains an adjustable latch with both square corner faceplate and drive-in style collar in the box
- Accommodates Schlage conventional 6-pin (keyed 6) in Schlage C keyway, keyed different and SFIC cylinders
- Master Carton Quantities: 8 for all UPCs



Product description	Function	Finish	Cylinder	UPC #	Price
DB1000-SCT-626-KDC	Single Cylinder x Turn	626	6-pin, Schlage C, KD	043156535651	\$107.00
DB1000-SCT-613-KDC	Single Cylinder x Turn	613	6-pin, Schlage C, KD	043156535668	\$120.00
DB1000-SCT-626-SFIC	Single Cylinder x Turn	626	Less SFIC	043156535675	\$107.00
DB1000-SCT-613-SFIC	Single Cylinder x Turn	613	Less SFIC	043156535682	\$120.00
DB1000-DCT-626-KDC	Double cylinder	626	6-pin, Schlage C, KD	043156535699	\$139.00
DB1000-DCT-613-KDC	Double cylinder	613	6-pin, Schlage C, KD	043156535705	\$155.00
DB1000-DCT-626-SFIC	Double cylinder	626	Less SFIC	043156535712	\$139.00
DB1000-DCT-613-SFIC	Double cylinder	613	Less SFIC	043156535729	\$155.00

DB2000 SERIES DEADBOLT

- Grade 2, non UL listed 3 hour
- Finishes: 605 (US3) Bright Brass; 626 (US26D) Satin Chrome; 613 (US10B) Oil-Rubbed Bronze; 630 (US32D) = Satin Stainless
- 1-3/8" – 1-3/4" standard cylinderdoor range; 1-5/8" – 2" SFIC door range
- All functions include 2-3/8" x 2-3/4" universal square corner latch (p/n 30-253), 1-1/8" x 2-3/4" square corner lipless strike
- 4WB (4-way bolt) function includes square corner faceplate and drive-in style collar is installed out of box
- Master Carton Quantities: 8 for all UPCs



Product description	Function	Finish	Cylinder	UPC #	Price
DB2000-4WB-SCT-626-KDC	Single Cylinder x Turn	626	6-pin, Schlage C, KD	043156036516	\$78.00
DB2000-4WB-SCT-613-KDC	Single Cylinder x Turn	613	6-pin, Schlage C, KD	043156036523	\$87.00
DB2000-SCT-626-KDC	Single Cylinder x Turn	626	6-pin, Schlage C, KD	043156535736	\$67.00
DB2000-SCT-630-KDC	Single Cylinder x Turn	630	6-pin Schlage C, KD	043156591190	\$67.00
DB2000-SCT-613-KDC	Single Cylinder x Turn	613	6-pin, Schlage C, KD	043156535743	\$75.00
DB2000-SCT-605-KDC	Single Cylinder x Turn	605	6-pin, Schlage C, KD	043156556649	\$75.00
DB2000-SCT-626-SFIC	Single Cylinder x Turn	626	Less SFIC	043156535750	\$67.00
DB2000-SCT-630-SFIC	Single Cylinder x Turn	630	Less SFIC	043156591206	\$67.00
DB2000-SCT-613-SFIC	Single Cylinder x Turn	613	Less SFIC	043156535767	\$75.00
DB2000-SCT-605-SFIC	Single Cylinder x Turn	605	Less SFIC	043156556656	\$75.00
DB2000-DCT-626-KDC	Double cylinder	626	6-pin, Schlage C, KD	043156535774	\$87.00
DB2000-DCT-613-KDC	Double cylinder	613	6-pin, Schlage C, KD	043156535781	\$98.00
DB2000-DCT-605-KDC	Double cylinder	605	6-pin, Schlage C, KD	043156556663	\$98.00
DB2000-DCT-626-SFIC	Double cylinder	626	Less SFIC	043156535798	\$87.00
DB2000-DCT-613-SFIC	Double cylinder	613	Less SFIC	043156535804	\$98.00
DB2000-DCT-605-SFIC	Double cylinder	605	Less SFIC	043156556670	\$98.00

LATCHES

- Latch drive-in conversion kits are for use with DB1000 deadbolts only
- Master Carton Quantities: 100 for all UPCs

Product description	Function	Finish	Cylinder	UPC #	Price
DB2000-4WB-KIT-626	Replacement Latch	626	N/A	043156036530	\$17.00
DB2000-4WB-KIT-613	Replacement Latch	613	N/A	043156036547	\$17.00

DCH1000 SERIES

- Heavy duty surface door closers
- Grade 1, UL / UL 10C Listed (non-hold open arms)
- Finishes: 689 (ALUM) = Aluminum Paint; 695 (DKBRZ) = Dark Bronze Paint
- ADA compliant at size 1
- Adjustable spring size 1-6
- 6-3/4" x 2-3/8" mounting hole pattern
- Staked, independent adjustment values: sweep speed, latch speed, and back-check
- Single piece, cast aluminum body
- Universal hardware pack
- Master Carton Quantities: 4 for all UPCs



Product description	Arm	Finish	Handing	Cylinder	Cover	UPC #	Price
DCH1000A.STD.FULL.RW/PA.689	Rw/PA	689	-	Std	Full	043156729043	\$277.00
DCH1000A.STD.FULL.RW/PA.695	Rw/PA	695	-	Std	Full	043156729050	\$277.00
DCH1000.STD.FULL.HW/PA.689	Hw/PA	689	-	Std	Full	043156535958	\$289.00
DCH1000.STD.FULL.DS.689	DS	689	-	Std	Full	043156535965	\$308.00
DCH1000A.STD.FULL.DS/HO.689	DS/HO	689	-	Std	Full	043156729029	\$325.00

DCH4000 SERIES

- Heavy duty surface door closers
- Grade 1, UL/UL10C Compliant (non-hold open arms)
- Finishes: 689 (ALUM) = Aluminum Paint; 695 (DKBRZ) = Dark Bronze Paint
- ADA Compliant at Size 1
- Adjustable spring size 1-6
- 5" x 2-1/4" mounting hole pattern
- Staked, independent adjustment values: sweep speed, latch speed and back-check
- Single piece, cast iron body
- Universal hardware pack
- Master Carton Quantities: 2 for all UPCs

Product description	Arm	Finish	Handing	Cylinder	Cover	UPC #	Price
DCH4000.STD.FULL.RW/PA.689	Rw/PA	689	-	Std	Full	043156976676	\$310.00
DCH4000.STD.FULL.HW/PA.689	Hw/PA	689	-	Std	Full	043156976706	\$337.00
DCH4000.STD.FULL.DS.689	DS	689	-	Std	Full	043156976683	\$366.00
DCH4000.STD.FULL.DS/HO.689	DS/HO	689	-	Std	Full	043156976690	\$393.00
DCH4000.STD.FULL.RW/PA.695	Rw/PA	695	-	Std	Full	043156976713	\$310.00
DCH4000.STD.FULL.HW/PA.695	Hw/PA	695	-	Std	Full	043156976744	\$337.00
DCH4000.STD.FULL.DS.695	DS	695	-	Std	Full	043156976720	\$366.00
DCH4000.STD.FULL.DS/HO.695	DS/HO	695	-	Std	Full	043156976737	\$393.00

DCM1000 SERIES

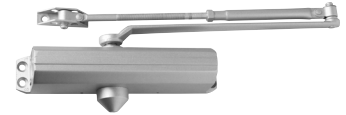
- Medium duty surface door closers
- Grade 1, UL/UL 10C Listed (non-hold open arms)
- Finishes: 689 (ALUM) = Aluminum Paint; 695 (DKBRZ) = Dark Bronze Paint
- ADA compliant at size 1
- Adjustable spring size 1-6
- 12" x 3/4" mounting hole pattern
- Staked, independent adjustment values: sweep speed, latch speed, and back-check
- Single piece, cast aluminum body
- Universal hardware pack
- Note: 6 for all Rw/PA UPCs and 4 for all Hw/PA UPCs



Product description	Arm	Finish	Handing	Cylinder	Cover	UPC #	Price
DCM1000.STD.SLIM.RW/PA.689	Rw/PA	689	-	Std	Slim	043156535859	\$193.00
DCM1000.STD.SLIM.RW/PA.695	Rw/PA	695	-	Std	Slim	043156535866	\$193.00
DCM1000.STD.FULL.RW/PA.689	Rw/PA	689	-	Std	Full	043156535873	\$193.00
DCM1000.STD.FULL.RW/PA.695	Rw/PA	695	-	Std	Full	043156535880	\$193.00
DCM1000.STD.SLIM.HW/PA.689	Hw/PA	689	-	Std	Slim	043156535897	\$236.00
DCM1000.STD.SLIM.HW/PA.695	Hw/PA	695	-	Std	Slim	043156535903	\$236.00
DCM1000.STD.FULL.HW/PA.689	Hw/PA	689	-	Std	Full	043156535910	\$236.00
DCM1000.STD.FULL.HW/PA.695	Hw/PA	695	-	Std	Full	043156535927	\$236.00

DCL2000 SERIES

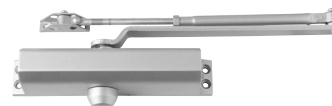
- Light duty surface door closers
- Grade 1, UL/UL 10C Listed (non-hold open arms)
- Finishes: 689 (ALUM) = Aluminum Paint; 695 (DKBRZ) = Dark Bronze Paint
- ADA compliant at size 1
- Adjustable spring size 1-6
- 9-1/16" x 3/4" mounting hole pattern
- Independent adjustment values: sweep speed, latch speed, and back-check
- Single piece, cast aluminum body
- Universal hardware pack
- Master Carton Quantities: 4 for all UPCs



Product description	Arm	Finish	Handing	Cylinder	Cover	UPC #	Price
DCL2000.STD.LESS.RW/PA.689	Rw/PA	689	-	Std	Less	043156535811	\$154.00
DCL2000.STD.LESS.RW/PA.695	Rw/PA	695	-	Std	Less	043156535828	\$154.00
DCL2000.STD.LESS.HW/PA.689	Hw/PA	689	-	Std	Less	043156535835	\$197.00
DCL2000.STD.FULL.RW/PA.689	Rw/PA	689	-	Std	Full	043156535842	\$165.00

DCR8000 SERIES

- Grade 1, UL/UL 10C Listed (non-hold open arms)
- Finishes: 689 (ALUM) = Aluminum Paint;
695 (DKBRZ) = Dark Bronze Paint
- ADA compliant at size 1, (180 deg - TJ & Pull Side)
- Adjustable spring size 1-4
- 9-1/16" x 3/4" mounting hole pattern
- Master Carton Quantities: 4 for all UPCs



Product description	Arm	Finish	Handing	Cylinder	Cover	UPC #	Price
DCR8000.STD.LESS.RW/PA.689	Rw/PA	689	-	Std	Less	043156536009	\$108.00
DCR8000.STD.LESS.RW/PA.695	Rw/PA	695	-	Std	Less	043156536016	\$108.00

CYLINDRICAL LOCKS

DEADBOLTS

SURFACE DOOR CLOSERS

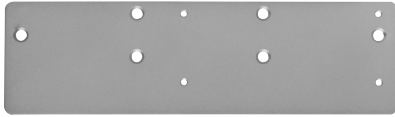
EXIT DEVICES

MERCHANDISING AIDS

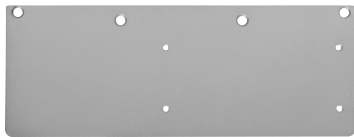
DROP PLATES

- Finishes: 689 (ALUM) = Aluminum Paint; 695 (DKBRZ) = Dark Bronze Paint
- Master Carton Quantities: 10 for all DCL2000 UPCs, 15 for all DCM1000 UPCs, and 12 for all DCH1000 UPCs

DCH1000 Series



DCH1000
Pull side/top jamb

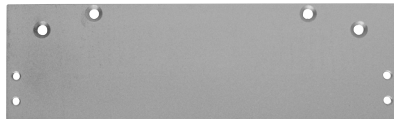


DCH1000
Parallel arm

DCM1000 Series



DCM1000
Pull side/Top jamb



DCM1000
Parallel arm

DCL2000 Series



DCL2000
Top jamb



DCL2000
Parallel arm

Product description	Plate type	Finish	UPC #	Price
DCL2000P.DP18TJ.689	Top jamb	689	043156536023	\$23.00
DCL2000P.DP18PA.689	Parallel arm	689	043156536030	\$23.00
DCL2000P.DP18TJ.695	Top jamb	695	043156536047	\$23.00
DCL2000P.DP18PA.695	Parallel arm	695	043156536054	\$23.00
DCM1000P.DP18TJ.689	Pull side/top jamb	689	043156536061	\$21.00
DCM1000P.DP18PA.689	Parallel arm	689	043156536078	\$21.00
DCM1000P.DP18TJ.695	Pull side/top jamb	695	043156536085	\$21.00
DCM1000P.DP18PA.695	Parallel arm	695	043156536092	\$21.00
DCH1000P.DP18.689	Pull side/top jamb	689	043156536108	\$25.00
DCH1000AP.DP18PA.689	Parallel arm	689	043156729098	\$25.00
DCH1000P.DP18.695	Pull side/top jamb	695	043156536122	\$43.00
DCH1000P.DP18PA.695	Parallel arm	695	043156536139	\$43.00

Note: DCL2000P drop plates are also compatible with DCR8000 Series closers.

DCH4000 PLASTIC COVERS

Product description	Finish	UPC #	Price
DCH4000P-FC-ALUM	689	194555188105	\$24.00
DCH4000P-FC-DKBRZ	695	194555188112	\$24.00

ED1000 SERIES

- Grade 1, UL listed panic device
- UL Listed 3-hour fire device
- Finishes: 626 (US26D) Satin Chrome; 613 (US10B) Oil-Rubbed Bronze; 630 (US32D) = Satin Stainless
- Master Carton Quantities: 3 for all UPCs



ED1000-R Series Rim Panic Device

Product description	Trim function	Handing	Finish	Device length	Door height	UPC #	Price
ED1000-R-EO-3 FT-US26D	Exit only	-	626	3'	-	043156536351	\$815.00
ED1000-R-EO-4 FT-US26D	Exit only	-	626	4'	-	043156536368	\$835.00
ED1000-R-EO-3 FT-US32D	Exit only	-	630	3'	-	043156536375	\$837.00
ED1000-R-EO-4 FT-US32D	Exit only	-	630	4'	-	043156536382	\$858.00
ED1000-R-EO-3 FT-US10B	Exit only	-	613	3'	-	043156536399	\$894.00
ED1000-R-EO-4 FT-US10B	Exit only	-	613	4'	-	043156536405	\$914.00

ED1000-R-F Series Rim Fire Exit Hardware

Product description	Trim function	Handing	Finish	Device length	Door height	UPC #	Price
ED1000-R-F-EO-3 FT-US26D	Exit only	-	626	3'	-	043156536412	\$1,000.00
ED1000-R-F-EO-3 FT-US10B	Exit only	-	613	3'	-	043156536429	\$1,096.00

ED1000-V Series Surface Vertical Rod Panic Device

Product description	Trim function	Handing	Finish	Device length	Door height	UPC #	Price
ED1000-V-EO-3 FT-7'DH-US26D	Exit only	-	626	3'	7'	043156536436	\$1,197.00
ED1000-V-EO-3 FT-7'DH-US10B	Exit only	-	613	3'	7'	043156536443	\$1,270.00

ED1000 SERIES TRIM AND ACCESSORIES

- Master Carton Quantities: 12 for all Handle Pull Plate UPCs and 6 for all other UPCs



Escutcheon lever -
Classroom



Escutcheon lever -
Night latch



Escutcheon lever -
Passage blank
escutcheon



Thumbpiece
pull plate -
Classroom



Handle
pull plate -
Night latch

Product description	Function	Cylinder	Finish	UPC #	Price
ED1000T-CLRM-R-ESC-NC-US26D	Escutcheon lever - Classroom	NC (requires mortise)	626	043156536450	\$530.00
ED1000T-CLRM-R-ESC-NC-US10B	Escutcheon lever - Classroom	NC (requires mortise)	613	043156536467	\$567.00
ED1000T-NL-R-ESC-NC-US26D	Escutcheon lever - Night latch	NC (requires rim)	626	043156536474	\$508.00
ED1000T-NL-R-ESC-NC-US10B	Escutcheon lever - Night latch	NC (requires rim)	613	043156536481	\$545.00
ED1000T-PASS-R-ESC-US26D	Escutcheon lever - Passage blank escutcheon	N/A	626	043156536498	\$401.00
ED1000T-PASS-R-ESC-US10B	Escutcheon lever - Passage blank escutcheon	N/A	613	043156536504	\$438.00
ED1000T-CLRM-TP-NC-US26D	Thumbpiece pull plate - Classroom	NC (requires mortise)	626	043156536511	\$278.00
ED1000T-CLRM-TP-NC-US10B	Thumbpiece pull plate - Classroom	NC (requires mortise)	613	043156536528	\$315.00
ED1000T-NL-HPUL-NC-US26D	Handle pull plate - Night latch	NC (requires rim)	626	043156536535	\$182.00
ED1000T-NL-HPUL-NC-US10B	Handle pull plate - Night latch	NC (requires rim)	613	043156536542	\$219.00

NC = No cylinder included

EXTENSION RODS

- Master Carton Quantities: 20 for all UPCs

Product description	Length	Finish	UPC #	Price
ED1000-EXTRD-US26D	12"	626	043156538256	\$19.00
ED1000-EXTRD-US10B	12"	613	043156538249	\$20.00

ED1500 SERIES

- Grade 1, UL listed panic device
- UL Listed 3-hour fire rim device
- Finishes: 689 (SP28) = Aluminum Paint; 695 (SP313) = Dark Bronze Paint
- Master Carton Quantities: 3 for all UPCs



ED1500-R Series Rim Panic Device

Product description	Trim function	Device length	Door height	Finish	UPC #	Price
ED1500-R-EO-3FT-SP28	Exit only	3'	-	689	043156519415	\$263.00
ED1500-R-EO-4FT-SP28	Exit only	4'	-	689	043156519637	\$297.00
ED1500-R-EO-3FT-SP313	Exit only	3'	-	695	043156963881	\$263.00
ED1500-R-EO-4FT-SP313	Exit only	4'	-	695	043156963898	\$297.00

ED1500-R-F Series Rim Fire Exit Device

Product description	Trim function	Device length	Door height	Finish	UPC #	Price
ED1500-R-F-EO-3FT-SP28	Exit only	3'	-	689	043156522996	\$353.00
ED1500-R-F-EO-3FT-SP313	Exit only	3'	-	695	043156963638	\$353.00

ED1500-V Series Surface Vertical Rod Panic Device

Product description	Trim function	Device length	Door height	Finish	UPC #	Price
ED1500-V-EO-3FT-7'DH-SP28	Exit only	3'	7'	689	043156963645	\$448.00
ED1500-V-EO-3FT-7'DH-SP313	Exit only	3'	7'	695	043156963904	\$448.00

ED1500 SERIES TRIM AND ACCESSORIES

- Master Carton Quantities: 12 for all Handle Pull Plate UPCs and 6 for all other UPCs



Escutcheon lever -
Classroom/
Night latch



Raised lip
pull plate -
Night latch



Raised lip
pull plate -
Dummy



Key-in-lever round
rose - Classroom/
Night latch
Less SFIC not shown



Handle
pull plate -
Night latch



Handle
pull plate -
Dummy

Product description	Function	Cylinder	Finish	UPC #	Price
ED1500T-CLRM-R-ESC-NC-SP28	Escutcheon lever - Classroom	NC (requires mortise)	689	043156597550	\$184.00
ED1500T-CLRM-R-ESC-NC-SP313	Escutcheon lever - Classroom	NC (requires mortise)	695	043156963652	\$184.00
ED1500T-NL-R-ESC-NC-SP28	Escutcheon lever - Night latch	NC (requires mortise)	689	043156597567	\$184.00
ED1500T-NL-R-ESC-NC-SP313	Escutcheon lever - Night latch	NC (requires mortise)	695	043156963669	\$184.00
ED1500T-NL-PULL-NC-SP28	Raised lip pull plate - Night latch	NC (requires rim)	689	043156963676	\$43.00
ED1500T-NL-PULL-NC-SP313	Raised lip pull plate - Night latch	NC (requires rim)	695	043156963683	\$43.00
ED1500T-DUM-PULL-SP28	Raised lip pull plate - Dummy	N/A	689	043156963690	\$27.00
ED1500T-DUM-PULL-SP313	Raised lip pull plate - Dummy	N/A	695	043156963706	\$27.00
ED1500T-CLRM-R-KDC-SP28	Key-in-lever round rose - Classroom	KDC	689	043156963713	\$151.00
ED1500T-CLRM-R-KDC-SP313	Key-in-lever round rose - Classroom	KDC	695	043156963720	\$151.00
ED1500T-NL-R-KDC-SP28	Key-in-lever round rose - Night latch	KDC	689	043156963737	\$151.00
ED1500T-NL-R-KDC-SP313	Key-in-lever round rose - Night latch	KDC	695	043156963744	\$151.00
ED1500T-CLRM-R-SFIC-SP28	Key-in-lever round rose - Classroom	Less SFIC	689	043156963751	\$145.00
ED1500T-NL-R-SFIC-SP28	Key-in-lever round rose - Night latch	Less SFIC	689	043156963768	\$145.00
ED1500T-NL-PULL-ESC-NC-SP28	Handle pull plate - Night latch	NC (requires rim)	689	043156963775	\$111.00
ED1500T-NL-PULL-ESC-NC-SP313	Handle pull plate - Night latch	NC (requires rim)	695	043156963782	\$111.00
ED1500T-DUM-PULL-ESC-SP28	Handle pull plate - Dummy	N/A	689	043156963799	\$111.00
ED1500T-DUM-PULL-ESC-SP313	Handle pull plate - Dummy	N/A	695	043156963805	\$111.00

NC = No cylinder included

KDC = KIL Cylinder, Schlage C Keyway, Keyed Differently

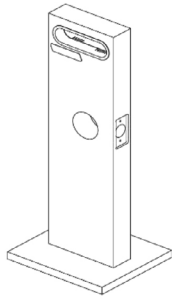
EXTENSION RODS

- Master Carton Quantities: 20 for all UPCs

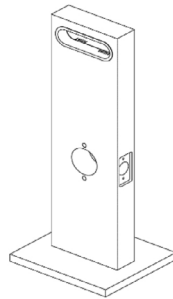
Product description	Length	Finish	UPC #	Price
ED1500-EXTRD-SP28	12"	689	043156963812	\$16.00
ED1500-EXTRD-SP313	12"	695	043156963829	\$16.00

MERCHANDISING AIDS

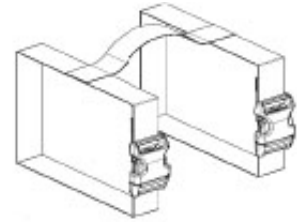
DEXTER COMMERCIAL WHITE WOOD MOUNTS



47284871



47284872



47286238

DISPLAY MOUNTS

Part No.	Description	Dimension (inches)					Price
		Backset	Bore	Faceplate width	Total height	Width at base	
47284871	Display Mount, Deadbolt, Knob and Keypad Mount	2-3/8"	2-1/8"	1"	19-7/8"	8"	\$180.00
47284872	Display Mount, Cylindrical Mount	2-3/4"	2-1/8"	1-1/8"	19-7/8"	8"	\$180.00
47286238	Mount Carton Carrying Strap	-	-	-	-	-	\$22.00

Note: Price does not include lock.



this page intentionally blank

About Allegion

Allegion (NYSE: ALLE) is a global pioneer in seamless access. We keep people and their assets safe, wherever they are, bringing together simple solutions, convenient access and advanced technology.

For more, visit www.allegion.com

KRYPTONITE ■ LCN ■  ■ STEELCRAFT ■ VON DUPRIN