

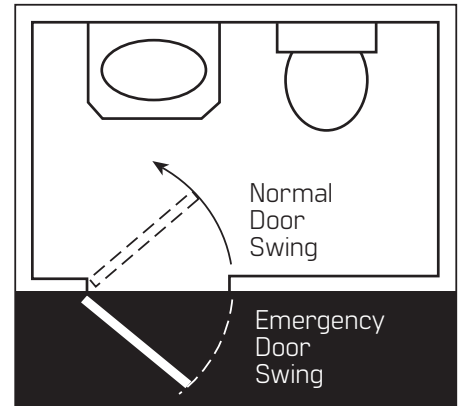
Emergency Rescue Hardware

For a variety of door applications including patient rooms in hospitals, institutions, and convalescent homes to private baths. Permits doors to normally swing into the bath, thus saving space, yet swing out into the bedroom, in case of emergency when a patient is trapped inside. Stanley hospital rescue hardware is composed of a Stanley DAP-3 (Double acting pivot), ES-1 (Emergency Door Stop), and DLS-1 or DSL-2 (Double Lipped Strike).

Double Acting Pivot

DAP-3 – (ANSI A2742) – Brass and malleable iron – standard finishes

- Heavy duty pivot assembly for commercial double acting interior doors of average frequency use, weighing up to 135 lbs. (61 Kg) and not exceeding 3' (91 mm) in width
- For 1-3/8" (35 mm) and 1-3/4" (44 mm) thick doors
- Header plate has a walking beam design to simplify door installation
- Extra heavy 1/4" (6.35 mm) thick solid brass frame plates
- Oil impregnated bronze bearing in top door plate
- Smooth acting ball bearing assembly in bottom door plate
- For door undercuts in 1/16" (1.6 mm) increments from 3/4" (19 mm) to 1" (25 mm)
- Bottom bracket is frame mounted and must be floor supported
- The recommended positioning of the door is to inset it 1/8" (3.2 mm) from the bathroom face of the frame



65KL5 Deadlocking Latch Specifications

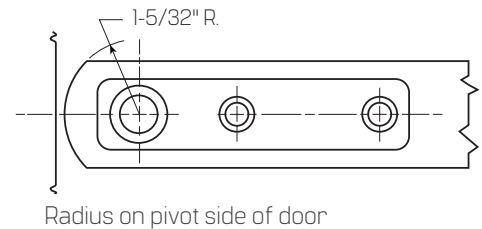
Pivot point 1-1/4" (31.8 mm) from jamb

Header plate (brass) – 4-7/8" x 7/8" x 1/4" (124 mm x 22 mm x 6.4 mm)

Top door plate (malleable iron) – 4-3/8" x 1" x 1/4" (111 mm x 25.4 mm x 6.4 mm)

Bottom jamb bracket (brass) – 3" x 1-1/4" x 1/4" (76 mm x 32 mm x 6.4 mm)

Bottom door plate (malleable iron) – 4-3/8" x 1" x 1/4" (111 mm x 25.4 mm x 6.4 mm)



| Flat Head Screws Per Piece | Sets Per Box | Sets Per Case | Weight | |
|-------------------------------|--------------|---------------|--------|------|
| | | | Lbs. | (Kg) |
| 4-14 x 1 1/2 wood screws | 1 | 20 | 37 | (17) |
| 5-1/4-20 x 1/2 machine screws | | | | |