



ASSA ABLOY

Experience a safer
and more open world

MLX Series Cylindrical Lever Locks



MLX Series Cylindrical Lever Locks



ASSA ABLOY

Features:

Door Preparation – Requires standard 2-1/8" (54mm) bore through door.

Backset – 2-3/4" (70mm) standard. 2-3/8" (60mm) backset latch available separately.

Door Thickness – Fits 1-3/8" (35mm) to 1-3/4" (44mm) doors standard.

Latch – Stainless Steel 1/2" (13mm) throw, UL Listed, guarded latchbolt on all locking functions.

Latch Front – 1-1/8" x 2-1/4" for 2-3/4" (70mm) backset.

Exposed Trim – MLX levers are pressure cast zinc 4-3/4" (121mm) in length. MLX roses are wrought stainless steel or brass 3-5/16" (85mm) diameter. Total projection from face of door is 2-17/32" (65mm).

Freewheeling or Rigid Lever

Warranty – Ten Year Warranty

Handing – Non-handed

Packaging – 6 per case

Strike – 4-7/8" ANSI (124mm)

Cylinder Options – MLX Series locksets are supplied standard with solid brass 6-pin cylinders pinned in all 6 chambers with two nickel plated brass keys. The Arrow AR keyway is standard with the Schlage CS keyway as optional, keyed different. Optional: Small Format Interchangeable Core – lockset prepared for use with 6 or 7 pin interchangeable core. Supplied less core but packed with 6 and 7 pin tailpieces. Suffix "IC". Schlage Large Format Interchangeable core – the lockset is prepared for use with the Schlage large format interchangeable core cylinder. Supplied less core but packed with the tailpiece. Suffix "SIC".

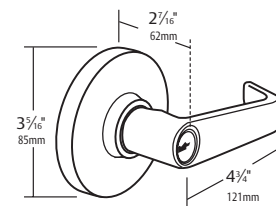
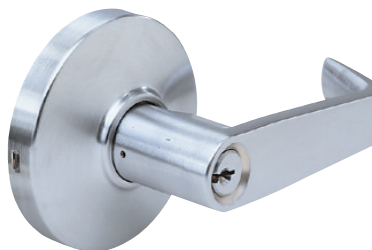
Finishes:

Arrow Code	BHMA	U.S. Equiv.	Finish Description	
605	605	US3	Bright Brass	
613E	613E	US10BE	Dark Oxidized Satin Bronze Equivalent	
626	626	US26D	Satin Chromium Plated	
BSP	BSP	—	Black Suede Powder Coat	

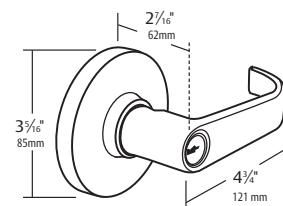
The MLX Series is a robust Grade 2 lockset featuring a Freewheeling Lever for abuse resistance, four screw lockset install for quick installation and a 10 Year Mechanical Warranty. The perfect solution for replacing or upgrading locksets in commercial applications.

Design:

Sierra - SR



Broadway - BRR



Certification & Compliance:



- Arrow MLX Series Cylindrical Lever Locks are BHMA Grade 2 Certified, ANSI/BHMA A156.2, Series 4000
- All Arrow MLX Series Locks are U.L. and c.U.L. list for use on 3 hour, A label or lesser doors
- Meets American with Disabilities Act Requirements

WARNING

This product can expose you to lead which is known to the state of California to cause cancer and birth defects or other reproductive harm. For more information go to www.P65warnings.ca.gov.

MLX Series Cylindrical Lever Locks

Function:

ARROW CODE	FUNCTION		DESCRIPTION
MLX01	Passage		Latchbolt operated by lever either side.
MLX72	Privacy		Latch operated by lever either side except when outside lever is locked by pushing inside button. Outside lever unlocked by turning inside lever, using emergency key, or closing door. Inside lever always operates latch
MLX08	1/2 Dummy Trim		Rigid trim for one side of door only. Used as pull or to match active
MLX81	Entrance		Latchbolt operated by lever either side except when outside lever is locked by turn-button inside. When outside lever is locked, latchbolt operated by key outside or turning inside lever. Inside button must be manually released.
MLX82	Storeroom		Outside lever always locked. Latchbolt operated by key in outside lever, or by turning inside lever.
MLX87	Classroom		Latchbolt operated by lever either side except when key outside locks outside lever. Inside lever always free. Key outside locks/unlocks outside lever only.
MLX33	Utility, Asylum, Institutional		Deadlocking latch bolt operated by key in lever, from either side. Both levers are always inoperable.
MLX93	Utility, Asylum, Institutional		Deadlocking latch bolt operated by key in lever, from either side. Both levers are always inoperable.



Indicates lever is rigid at all times.



This product can expose you to lead which is known to the state of California to cause cancer and birth defects or other reproductive harm. For more information go to www.P65warnings.ca.gov.

MLX Series Cylindrical Lever Locks



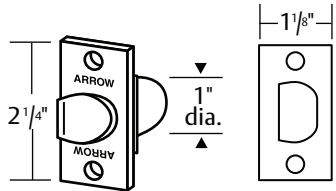
ASSA ABLOY

Latches:

Spring Latch

R23

2-3/4" Backset

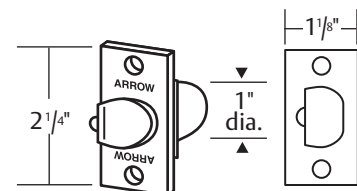


1/2" Throw

Dead Latch

R21

2-3/4" Backset



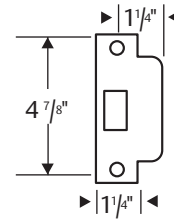
1/2" Throw

R21, U.L.

Strikes:

306

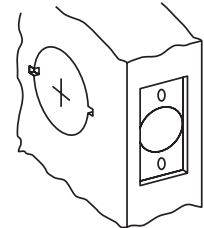
Standard with
MLX Series



ASA ANSI 115.2

Installation:

161 prep for retrofit and
secure installation.



Ordering Example:

Example: To order a MLX Series entry function lockset with a Sierra design lever, satin stainless steel finish, with an R21 strike, and 2-3/4" deadlocking latch, keyed different:

Specify:

Standard:

Series	Function	Design	Finish	Strike	Latch	Keying	Options (if required)
MLX	81	SR	26D	306	R21	KD	XXX

MLX Series Cylindrical Lever Locks



ASSA ABLOY

The ASSA ABLOY Group is the global leader in access solutions. Every day, we help billions of people experience a more open world.

ASSA ABLOY Opening Solutions leads the development within door openings and products for access solutions in homes, businesses and institutions. Our offering includes doors, frames, door and window hardware, mechanical and smart locks, access control and service.



ASSA ABLOY

Arrow Lock & Door Hardware
225 Episcopal Road
Berlin, CT 06037
Customer Service: 1-800-327-8539
Technical Product Support: 1-800-327-8539 X2
www.arrowlock.com