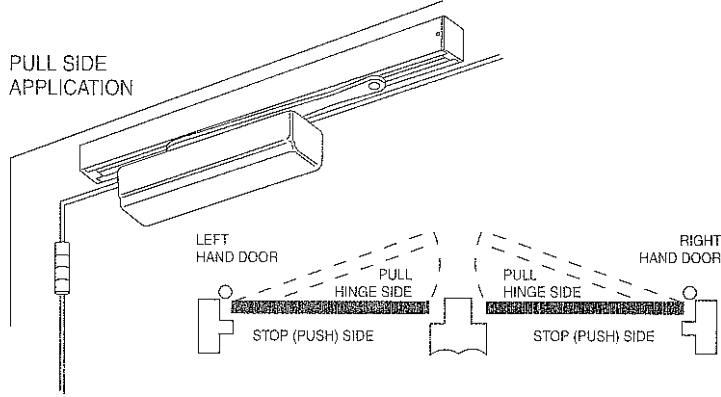


**MODEL
281
POWERGLIDE
SERIES**

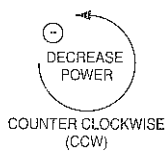
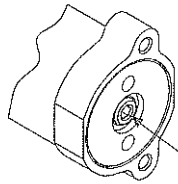
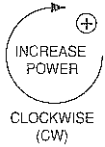
**INSTRUCTIONS FOR INSTALLING SARGENT® DOOR CLOSERS
WITH OT, OTB, HT, HTB**

281 NON SIZED ADJUSTABLE SIZES 2 THROUGH 5



DOOR WIDTH (INCHES)	APPROXIMATE DOOR WEIGHT (POUNDS)	NUMBER OF TURNS OF SPRING ADJUSTING NUT
24	80	1-5 CCW
30	110	FACTORY SET
32	115	
36	130	
40	150	1-5 CW
42	155	
44	165	
46	170	7-12 CW
48	180	

RIGHT HAND ILLUSTRATED

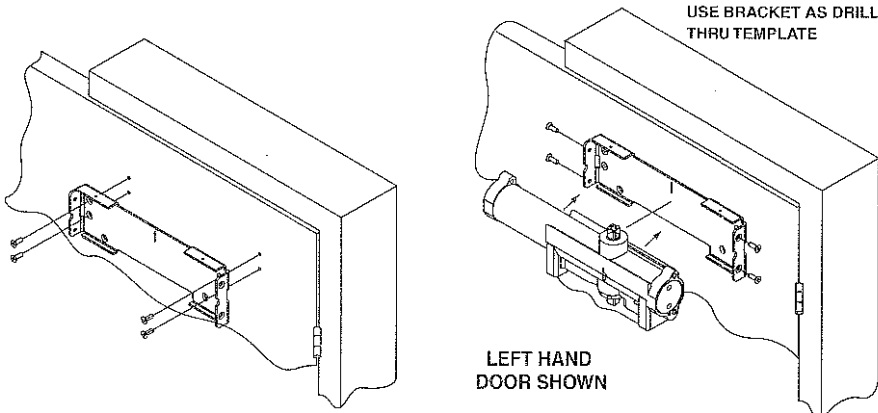


1/4" ALLEN SPRING POWER ADJUSTING SCREW*

WHERE STRONG DRAFTS EXIST, INCREASE SPRING POWER AS NEEDED BY TURNING SPRING ADJUSTMENT SCREW CLOCKWISE. IF NECESSARY, REDUCE SPRING POWER BY TURNING SCREW COUNTERCLOCKWISE.

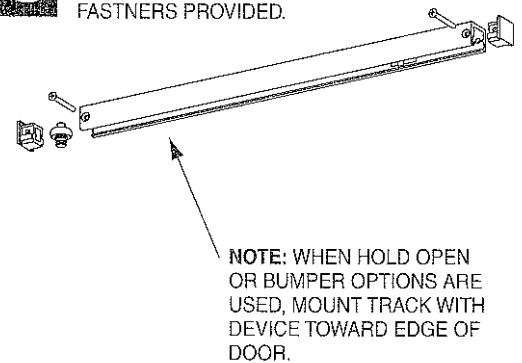
A USE DIMENSION SHOWN ON DATA SHEET A7205 ON PAGE 4 TO LOCATE AND PREPARE FOR MOUNTING SCREWS.

B INSTALL MOUNTING BRACKET WITH ARROW POINTING UP FOR BOTH RH & LH DOORS. INSTALL CLOSER WITH SPRING ADJUSTING SCREW AWAY FROM HINGE. (USE TEMPLATE ENCLOSED TO LOCATE AND DRILL HOLES)

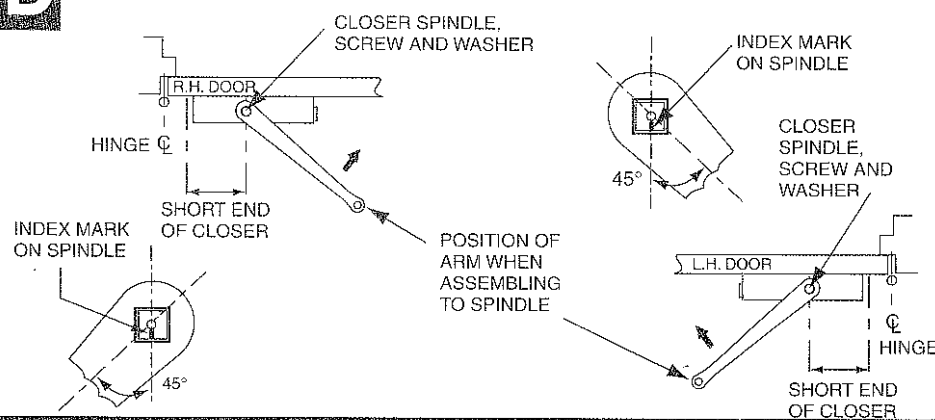


DRILL & TAP AND USE SCREWS PROVIDED OR USE MORTISE NUTS WHEN REQUIRED.

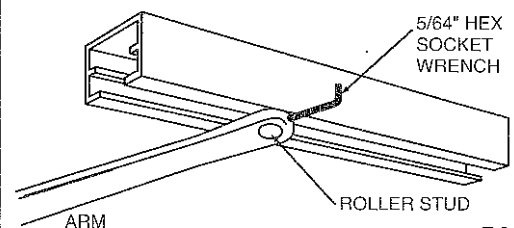
C INSERT ROLLER AND END CAPS INTO TRACK AND ATTACH TO FRAME WITH FASTENERS PROVIDED.



D ASSEMBLE ARM TO CLOSER WITH INDEX MARK ON END OF SPINDLE 45° FROM AXIS OF ARM AS ILLUSTRATED BELOW. USE WASHER AND SCREW TO RETAIN ARM.

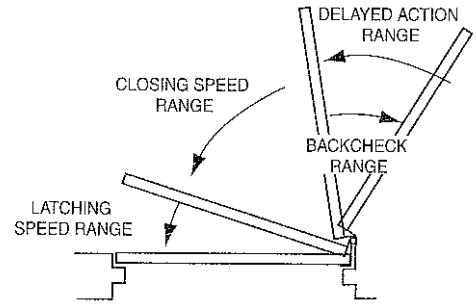
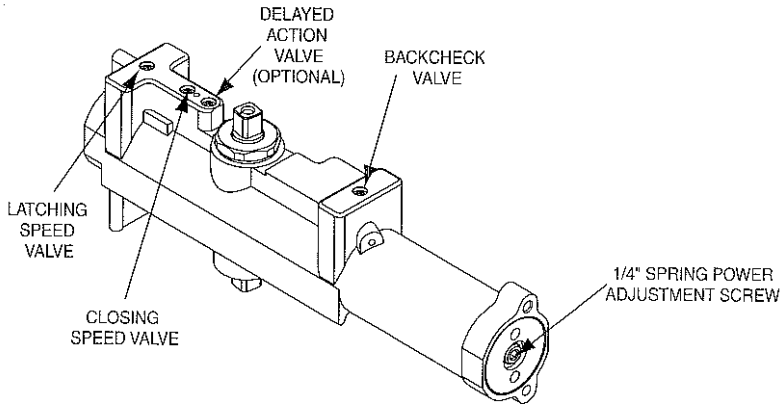


E CONNECT ARM TO ROLLER STUD USING WRENCH, BACK OUT ARM SET SCREW, OPEN DOOR 45° AND FIT ARM ON TO ROLLER STUD. TIGHTEN SET SCREW SECURELY.

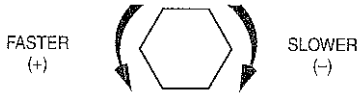


A7318D (OT, OTB, HT, HTB ARMS)

FINAL ADJUSTMENT AND REGULATING PROCEDURE

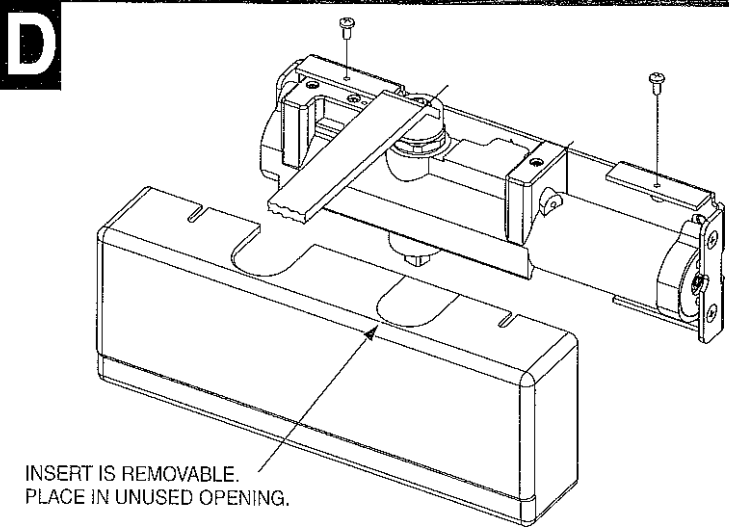


A REGULATING DOOR SPEED AND LATCHING SPEED AS NEEDED.
 USE HEX SOCKET (1/8" ALLEN) WRENCH AND TURN VALVES CLOCKWISE TO SLOW DOWN OR COUNTER CLOCKWISE TO SPEED UP DOOR MOVEMENT.



B REGULATING BACKCHECK
 TO REGULATE THE INTENSITY OF BACKCHECK ACTION TURN VALVE CLOCKWISE TO INCREASE OR COUNTER CLOCKWISE TO DECREASE CHECKING.
CAUTION: SET VALVE FOR SLIGHT CUSHIONING EFFECT. IT IS DAMAGING TO THE CLOSER IF THE CHECKING ACTION IS TOO ABRUPT. NEVER USE BACKCHECK AS A DOOR STOP. **ALWAYS USE A DOOR STOP TO STOP THE DOOR.**

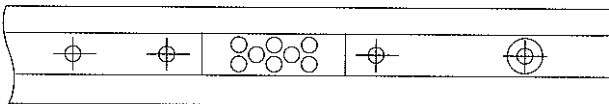
C FOR MODELS WITH OPTIONAL DELAYED ACTION FEATURE
 "DELAYED ACTION" PROVIDES SLOW DOOR CLOSING THROUGH DELAYED ACTION RANGE.
 TURN VALVE CLOCKWISE TO SLOW DOWN OR COUNTER CLOCKWISE TO SPEED UP DOOR MOVEMENT.



OPTIONS

BUMPER ASSISTS BACKCHECK IN CUSHIONING THE OPENING FOR DOOR. IT IS NOT INTENDED TO REPLACE AN AUXILIARY DOOR STOP.

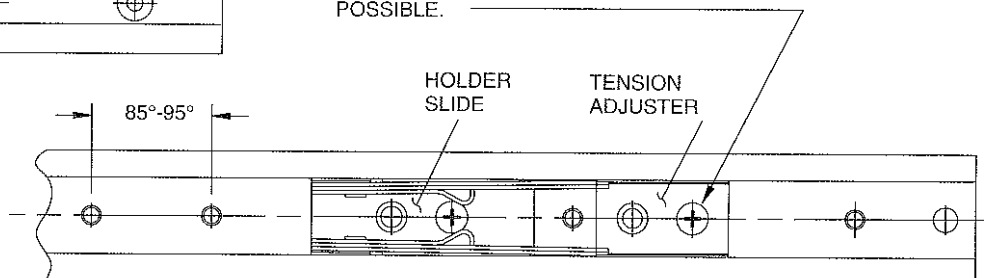
TO CHANGE BUMPER STOP LOCATION—REMOVE MOUNTING SCREW AND RELOCATE BUMPER STOP AT DESIRED POSITION.



FOR MODELS HAVING HOLDER TRACKS

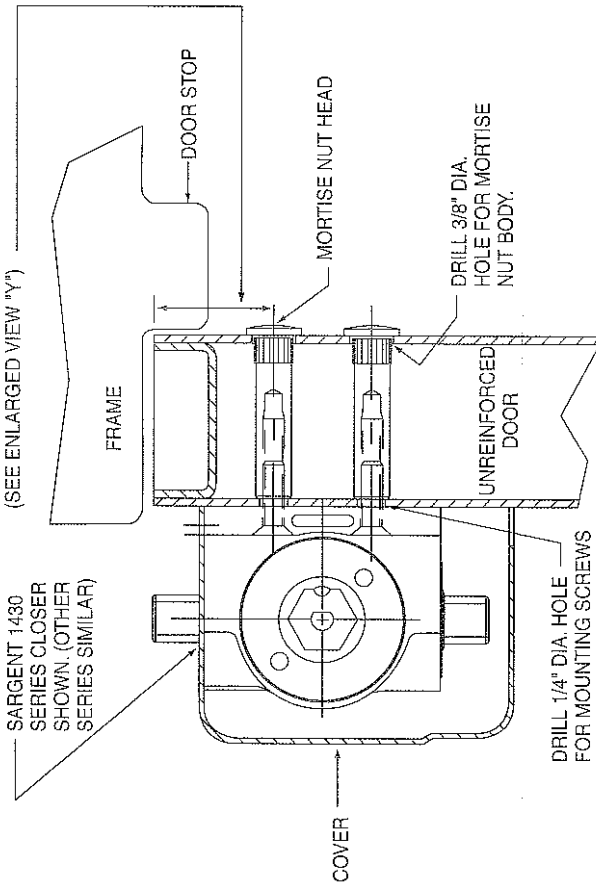
THE HOLDER DEVICE IS SET FOR 95° DOOR HOLDING POSITION AT THE FACTORY AND THE HOLDER TENSION IS SET AT THE LIGHTEST OF THE THREE SETTINGS.

TO INCREASE HOLDING TENSION REMOVE MOUNTING SCREW AND MOVE TENSION ADJUSTER TOWARD HOLDER SLIDE BY USING EITHER OF THE TWO HOLE LOCATIONS. TWO POSITIONS OF TENSION ARE POSSIBLE.



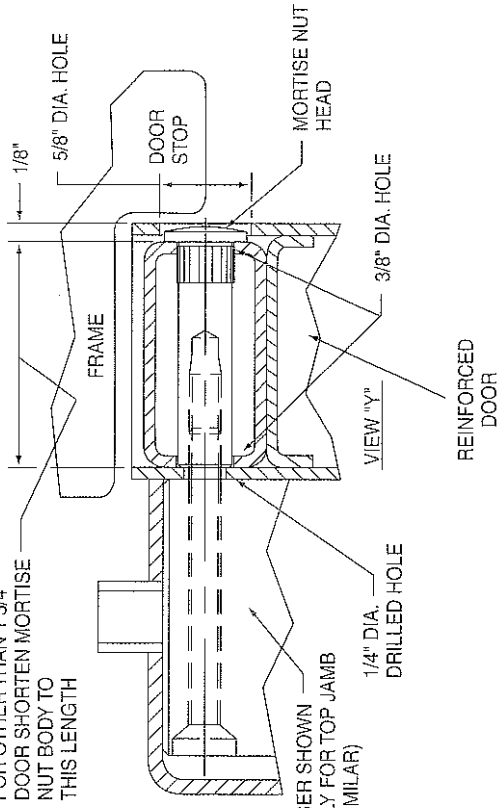
USING MORTISE NUTS WITH SARGENT DOOR CLOSER

SEE NOTE #1 BELOW FOR DIMENSION INFORMATION. IF A DIMENSION LESS THAN 7/8" IS USED, THE DOOR STOP MUST BE CUT TO CLEAR THE MORTISE NUT HEAD OR THE MORTISE NUT HEAD MUST BE RECESSED. (SEE ENLARGED VIEW "Y")

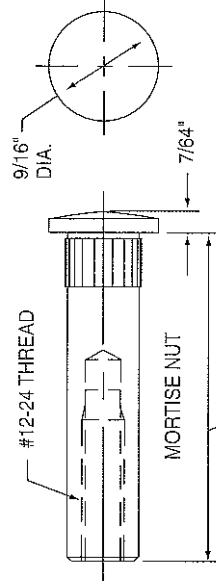


SARGENT 351 SERIES SHOWN

FOR OTHER THAN 1 3/4" DOOR SHORTEN MORTISE NUT BODY TO THIS LENGTH



351 DOOR CLOSER SHOWN (FOOT ASSEMBLY FOR TOP JAMB MOUNTING IS SIMILAR)



1 11/16" FOR 1 3/4" THICK DOOR
1 5/16" FOR 1 3/8" THICK DOOR
(SEE NOTE #4 FOR 2 1/4" THICK DOORS)

1. SEE INSTRUCTIONS OR DATA SHEET PACKED WITH DOOR CLOSER FOR DIMENSIONS LOCATING THE CLOSER BODY AND FOOT ON DOOR AND FRAME.

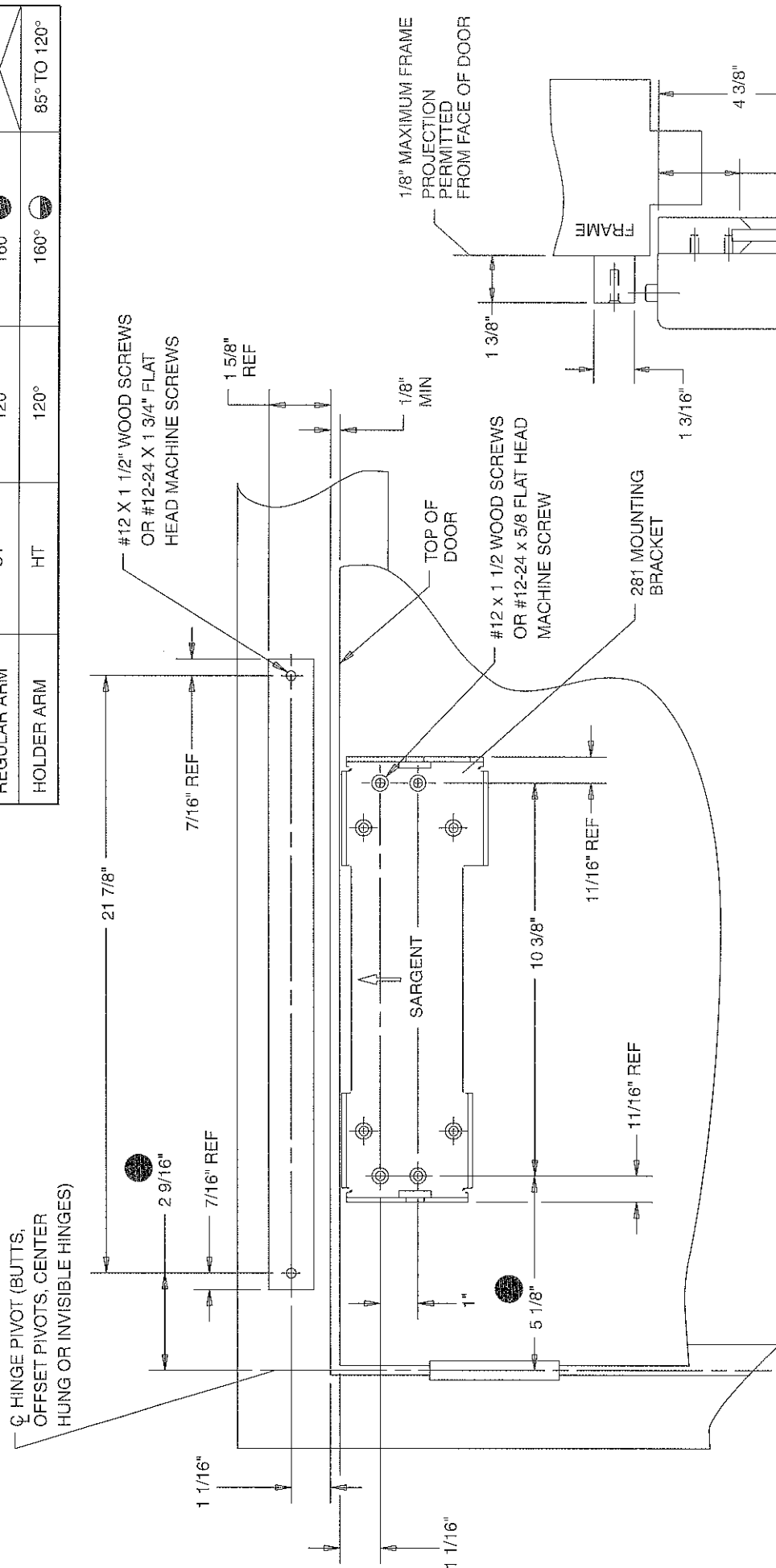
2. MORTISE NUT SHOWN IS DESIGNED FOR AN UNREINFORCED METAL DOOR.

3. FOR TOP JAMB AND CORNER BRACKET APPLICATIONS: THE DOOR CLOSER FOOT WILL BE ATTACHED TO THE DOOR IN A MANNER SIMILAR TO THAT SHOWN FOR MOUNTING THE CLOSER BODY.

4. FOR DOORS 2 1/4" THICK: MORTISE NUT SHOWN FOR 1 3/4" THICK DOORS WILL BE FURNISHED ALONG WITH APPROPRIATE LENGTH THRU-BOLTS. DOOR CONSTRUCTION MUST PROVIDE A BRIDGE TYPE REINFORCEMENT TO PREVENT THE DOOR RAIL FROM COLLAPSING WHEN THRU-BOLTS ARE TIGHTENED.

(TEMPLATE NO. A7205)

DESCRIPTION	ARM TYPE	MAXIMUM DOOR OPENING		RANGE OF HOLD OPEN
		WITH BUMPER	WITHOUT BUMPER	
REGULAR ARM	OT	120°	160°	85° TO 120°
HOLDER ARM	HT	120°	160°	



- 3 [THIS DIMENSION IS TAKEN FROM HINGE EDGE OF DOOR FOR INVISIBLE HINGES.
- 2 [RIGHT HAND DOOR SHOWN. LEFT HAND DOOR OPPOSITE.
- 1 [12 GAUGE MIN. REINFORCEMENT REQUIRED FOR METAL DOORS AND FRAMES.
- 5 [IF BUTT FRAME AND WALL CONDITIONS PERMIT, CLOSER WILL ALLOW DOOR TO OPEN 180°.
- 4 [SPACE REQUIRED TO MOUNT CLOSER ON RAIL. IF SPACE IS LESS THAN SHOWN USE 281-D DROP BRACKET. SEE DATA SHEET A7244 FOR DETAILS.