

# 9560 Series



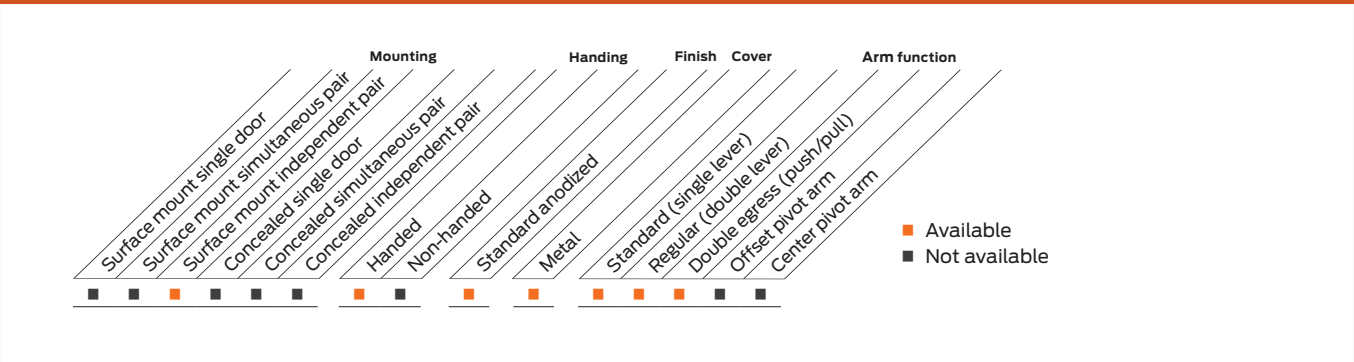
The 9560 Senior Swing by LCN is an ADA door operator that is a two-in-one swing door operator. Senior swing operator when activated, opens doors automatically for wheelchair access, yet allows for manual operation for regular pedestrian traffic.

## Features

<b>Certifications</b>	Grade 1 - ANSI A156.19, UL325/228, UL1998, ADA, 100 Hour Salt Spray, Meets BAA - Buy American Act
<b>Handing</b>	Handed
<b>Warranty</b>	2 years
<b>Cover</b>	Metal Cover (MC)

<b>Fasteners</b>	Machine Screws (MS)
<b>Mounting</b>	Independent pair, surface, pull, push, double egress
<b>Arms</b>	Single lever (push side), double lever (Pull side), double egress (push/pull)
<b>Finishes/colors/ powder coat</b>	<ul style="list-style-type: none"> <li>▪ 628 Aluminum, Anodized</li> <li>▪ 710 Dark Brown, Anodized</li> </ul>

**Special templates** | Customized installation templates or products may be available to solve non-standard applications. Contact LCN Product Support for assistance.



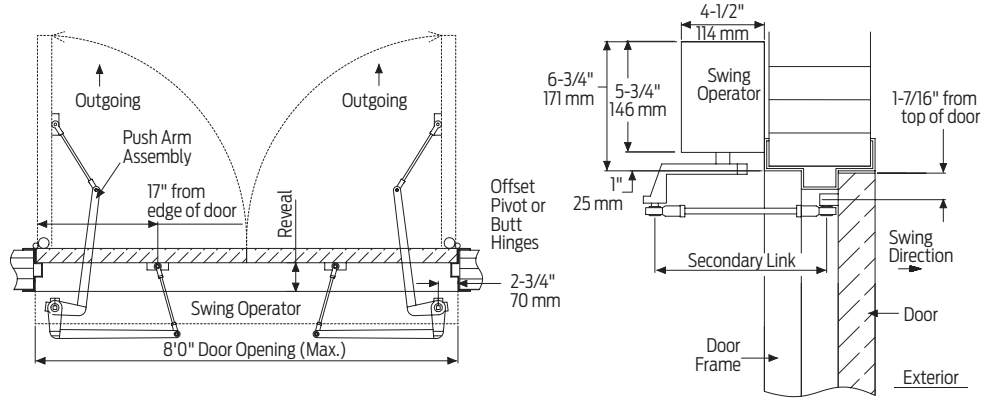
Introduction  
 Product selection guide  
 Pneumatic systems / Auto equalizers / 2610/4810/4820/4840/7900 Series  
 Electrohydraulic systems / Auto equalizers / 4630/4640 Series  
 Electromechanical systems / Benchmark / 9130/9140/9150 Series  
 Electromechanical systems / Senior Swing / 2810/2850/2860/9530/9540/9550/9560 Series  
 Actuators and accessories

## Mounting details

### Top jamb independent pair mounting

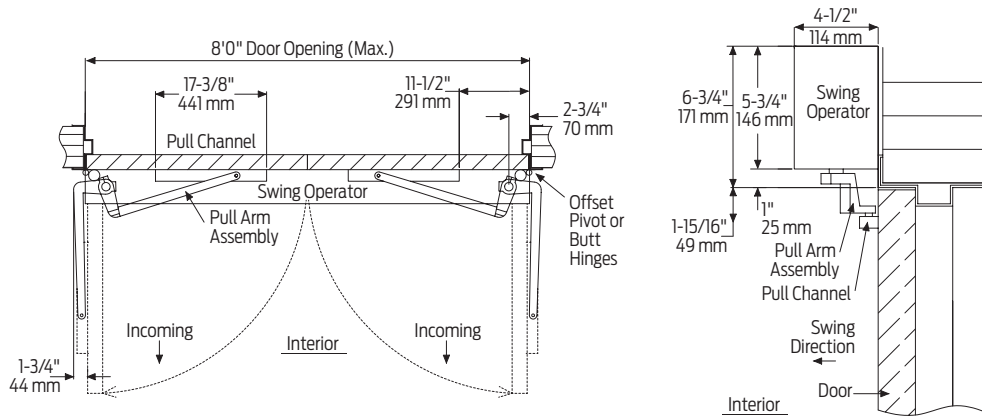
#### Offset pivot/butt hinge, center pivot, push

Note: Consult factory for all balanced door installations.



#### Offset pivot/ butt hinge, center pivot, pull

Note: Cannot be used with swing clear hinges, pocket pivots or balanced doors.



Butt hinges	Should not exceed 5" (127 mm) in width
Reveal for push	Should not exceed 10" (254 mm) for Regular Arm and 20" (508 mm) for Long Arm
Reveal for pull	Should not exceed 4" (102 mm)
Reveal	Double egress installations should not exceed 4" (102 mm)
Top rail	Minimum 2 3/4" (70 mm)
Head frame	<ul style="list-style-type: none"> <li>Minimum 1 3/4" (44 mm)</li> <li>Face frame 6 3/4" (171 mm) total operator clearance</li> </ul>
Opening and closing time	<ul style="list-style-type: none"> <li>Variable by adjustments to the electronic control box</li> <li>Maximum hold open time adjustable up to approximately 32 seconds</li> </ul>
System diagram	See pages 45 for typical system wiring and page 44 for electrical data
Maximum opening	Template allows 90 degree power opening and 90 degree manual opening

Notes:

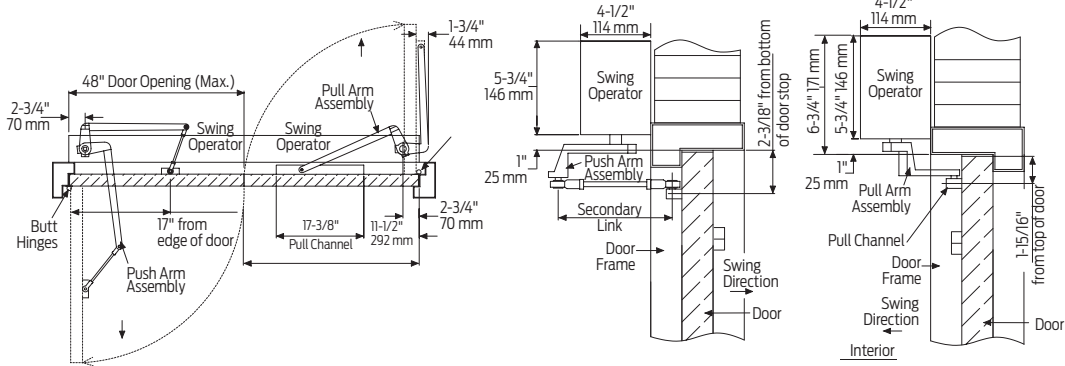
- Push N' Go permits non-switch activation with a power boost providing additional latching force
- Electromechanical unit with microprocessor control
- Digital keypad for easy setup
- 72" header length is standard. Specify 65" - 98" max
- Pull, push, or double egress applications available
- Actuators available separately, see pages 100-117

# Mounting details

## Top jamb independent pair mounting

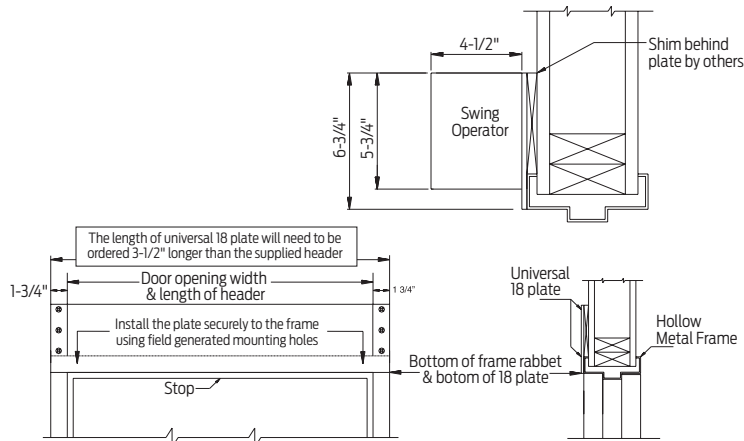
### RH double egress

Note: Cannot be used with swing clear hinges, pocket pivots or balanced door.



### Hollow metal frame

The 18 plate is 1/4" thick and will need to be ordered 3 1/2" longer than the header to allow for mounting the angle brackets to the vertical side jambs. See illustration below.



Note: Suggested installation.

Butt hinges	Should not exceed 5" (127 mm) in width
Reveal for push	Should not exceed 10" (254 mm) for Regular Arm and 20" (508 mm) for Long Arm
Reveal for pull	Should not exceed 4" (102 mm)
Reveal	Double egress installations should not exceed 4" (102 mm)
Top rail	Minimum 2 3/4" (70 mm)
Head frame	<ul style="list-style-type: none"> <li>Minimum 1 3/4" (44 mm)</li> <li>Face frame 6 3/4" (171 mm) total operator clearance</li> </ul>
Opening and closing time	<ul style="list-style-type: none"> <li>Variable by adjustments to the electronic control box</li> <li>Maximum hold open time adjustable up to approximately 32 seconds</li> </ul>
System diagram	See pages 45 for typical system wiring and page 44 for electrical data
Maximum opening	Template allows 90 degree power opening and 90 degree manual opening

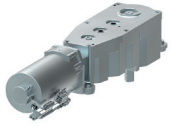
Notes:

- Push N' Go permits non-switch activation with a power boost providing additional latching force
- Electromechanical unit with microprocessor control
- Digital keypad for easy setup
- 72" header length is standard. Specify 65" - 98" max
- Pull, push, or double egress applications available
- Adjustable hold open period of 2 - 32 seconds in automatic or manual mode
- Actuators available separately, see pages 100-117

Introduction  
 Product selection guide  
 Pneumatic systems Auto equalizers 2610/4810/4820/4840/7900 Series  
 Electrohydraulic systems Auto equalizers 4630/4640 Series  
 Electromechanical systems Benchmark 9130/9140/9150 Series  
 Electromechanical systems Senior Swing 2810/2850/2860/9530/9540/9550/9560 Series  
 Actuators and accessories

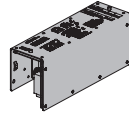
## Accessories

### Motor gearbox



- 9560-3454  
Standard Motor Gearbox (MGB)**
- Senior Swing
  - Handed
  - Driving mechanism for operator
  - Provides maximum 15 lbs opening force

### Control box

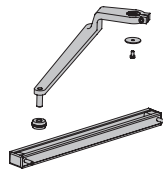


- 9560-3462  
Standard Controller (CTRL)**
- Electronic controlling device for Senior Swing

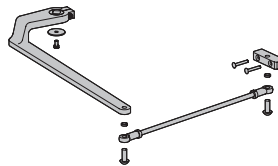
### Arm



- 9560-3077T  
Standard Arm (STDTRKARM)**
- Handed
  - Track roller not included



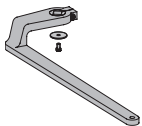
- 9560-3077  
Regular Arm (REGARM)**
- Handed
  - Includes 77 main arm assembly and 79 linkage assembly



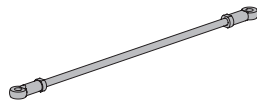
- 9560-3077L  
Long Arm (LONG)**
- Handed
  - Includes 77 main arm assembly and 79LR linkage assembly



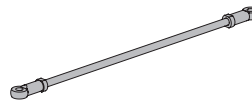
- 9560-3077PLCM  
Standard Arm Assembly with Track Roller (STDTRKARM2)**
- Handed
  - Includes 3077 regular arm assembly, 3038 track, and 3034 track roller



- 9560-77  
Main Arm**
- Handed
  - Attaches to motor gearbox



- 9560-79  
Linkage Assembly**
- 15"
  - Threaded rod attaches to door
  - Extends from main arm
  - Used for reveal 1" to 10"



- 9560-79LR  
Linkage Assembly**
- 32"
  - Threaded long rod attaches to door
  - Extends from main arm
  - Used for reveal 10" to 20"

### Track



- 9560-3038  
Track**
- Non-handed
  - Standard



- 9560-73  
Track End Cap**
- Black plastic end caps



- 9560-3034  
Roller**
- Quiet low friction roller assembly

## Accessories

### Brackets



**9560-275  
Mounting Bracket**

- Motor gearbox mounting bracket for 2 3/4" center pivot installations
- Front bracket



**9560-3018  
Rear Mounting Bracket**

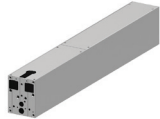
- Motor gearbox mounting bracket



**9560-334-1  
Angle Brackets (HLB)**

- Mounting bracket for surface applications
- Includes 2 mounting brackets

### Header



**9560-3572HL  
Standard Mounting Header (HDR)**

- Pair door, two operators
- Specify length 65" to 98" maximum
- Standard

### End cap



**9560-334  
Header End Caps**

- With openings for wiring



**9560-334-2  
Dress plates (HLD)**

- Metal finish end cap

### Installation accessories



**9560-11A  
Spindle Plate**

- Hides bottom of motor gearbox
- Completes header box
- Cutout allows for motor gearbox shaft
- For 2 3/4" offset pivot or butt hinge installations



**9560-12  
Filler Plate**

- Blank
- Completes length of header box
- Specify length



**9560-18  
Mounting Plate**

- Optional mounting plate for standard hollow metal door frames
- Specify length 68 1/2" to 101 1/2" maximum when using angle brackets
- Specify length 65" to 98" maximum when using dress plates

Note: The length of a universal 18 plate will need to be ordered 3 1/2" longer than the supplied header when using angle brackets.