

# 9550 Series



The 9550 Senior Swing by LCN is an ADA door operator that is a two-in-one swing door operator. Senior swing operator when activated, opens doors automatically for wheelchair access, yet allows for manual operation for regular pedestrian traffic.

## Features

|                       |   |
|-----------------------|---|
| <b>Certifications</b> | Grade 1 - ANSI A156.19, UL325/228, UL1998, ADA, 100 Hour Salt Spray, Meets BAA - Buy American Act   |
| <b>Handing</b>        | Handed  |
| <b>Door width</b>     | <ul style="list-style-type: none"> <li>Minimum combined door width 52" - 98" (push)</li> <li>Minimum combined door width 60" - 98" (pull; double egress)</li> <li>Simultaneous pair - width per leaf 30" minimum - 48" maximum</li> </ul> |
| <b>Warranty</b>       | 2 years   |

|                                     |   |
|-------------------------------------|---|
| <b>Fasteners</b>                    | Machine Screws (MS)   |
| <b>Mounting</b>                     | Simultaneous pair, surface mount, pull side, push side, double egress   |
| <b>Arms</b>                         | <ul style="list-style-type: none"> <li>2 Regular Arms (push)</li> <li>2 Standard Arms (pull)</li> <li>1 Regular and 1 Standard (double egress)</li> </ul> |
| <b>Finishes/colors/ powder coat</b> | <ul style="list-style-type: none"> <li>628 Aluminum, Anodized</li> <li>710 Dark Brown, Anodized</li> </ul>  |

**Special templates** | Customized installation templates or products may be available to solve non-standard applications. Contact LCN Product Support for assistance.

| Mounting                        | Handing    | Finish            | Cover                   | Arm function              |
|---------------------------------|------------|-------------------|-------------------------|---------------------------|
| Surface mount single door       | Handed     | Standard anodized | Standard (single lever) | Regular (push/pull)       |
| Surface mount simultaneous pair | Non-handed | Metal             | Regular (double lever)  | Double egress (push/pull) |
| Surface mount independent pair  |            |                   | Offset pivot arm        | Center pivot arm          |
| Concealed single door           |            |                   |                         |                           |
| Concealed simultaneous pair     |            |                   |                         |                           |
| Concealed independent pair      |            |                   |                         |                           |

■ Available  
■ Not available

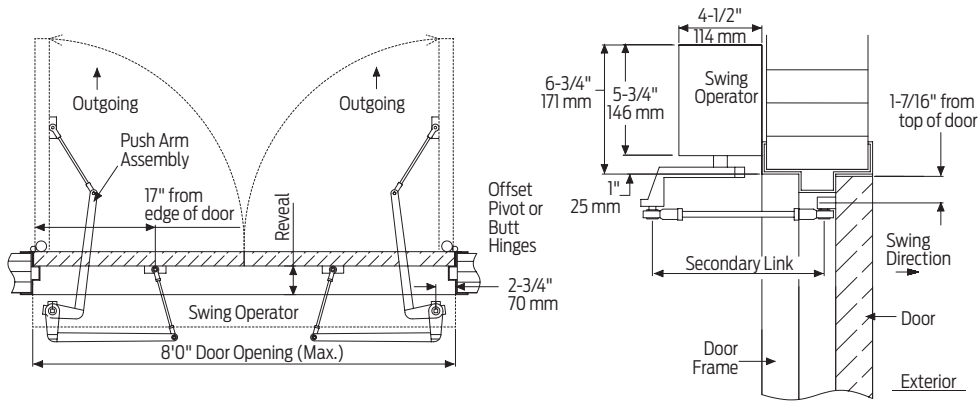
Introduction  
 Product selection guide  
 Pneumatic systems / Auto equalizers / 2610/4810/4820/4840/7900 Series  
 Electrohydraulic systems / Auto equalizers / 4630/4640 Series  
 Electromechanical systems / Benchmark / 9130/9140/9150 Series  
 Electromechanical systems / Senior Swing / 2810/2850/2860/9530/9540/9550/9560 Series  
 Actuators and accessories

# Mounting details

## Top jamb simultaneous pair mounting

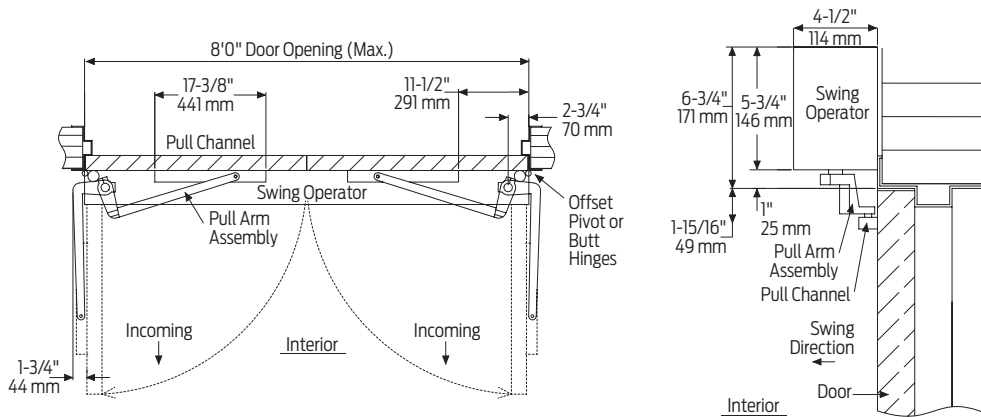
### Offset pivot/butt hinge, center pivot, push

Note: Consult factory for all balanced door installations.



### Offset pivot/ butt hinge, center pivot, pull

Note: Cannot be used with swing clear hinges, pocket pivots or balanced doors.



|                          |   |
|--------------------------|---|
| Butt hinges              | Should not exceed 5" (127 mm) in width  |
| Reveal for push          | Should not exceed 10" (254 mm) for Regular Arm and 20" (508 mm) for Long Arm  |
| Reveal for pull          | Should not exceed 4" (102 mm)   |
| Reveal                   | Double egress installations should not exceed 4" (102 mm)   |
| Top rail                 | Minimum 2 3/4" (70 mm)  |
| Head frame               | <ul style="list-style-type: none"> <li>Minimum 1 3/4" (44 mm)</li> <li>Face frame 6 3/4" (171 mm) total operator clearance</li> </ul>   |
| Opening and closing time | <ul style="list-style-type: none"> <li>Variable by adjustments to the electronic control box</li> <li>Maximum hold open time adjustable up to approximately 32 seconds</li> </ul> |
| System diagram           | See pages 45 for typical system wiring and page 44 for electrical data  |
| Maximum opening          | Template allows 90 degree power opening and 90 degree manual opening  |

Notes:

- Push N' Go permits non-switch activation with a power boost providing additional latching force
- Electromechanical unit with microprocessor control
- Digital keypad for easy setup
- 72" header length is standard. Specify other length 52" - 98" (push), specify other length 60" - 98" (pull; double egress) (consult factory regarding this option)
- Adjustable hold open period of 2 - 32 seconds in automatic or manual mode
- Actuators available separately, see pages 100-117

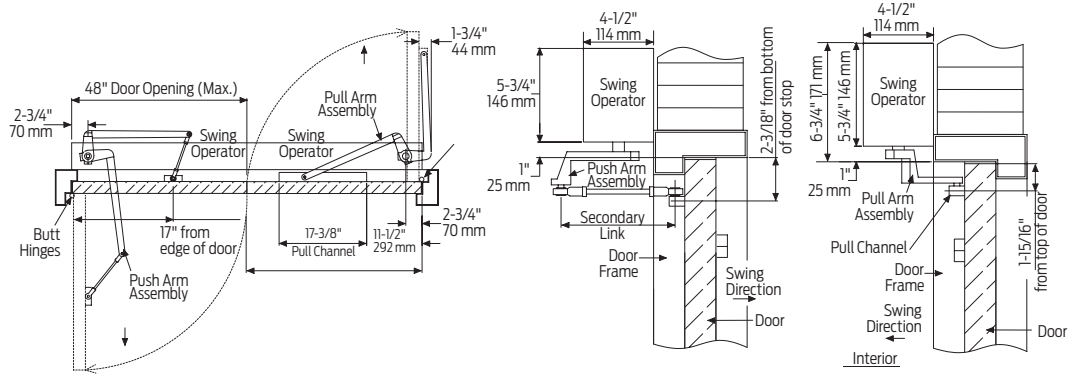
# Mounting details

## Top jamb simultaneous pair mounting

### RH double egress

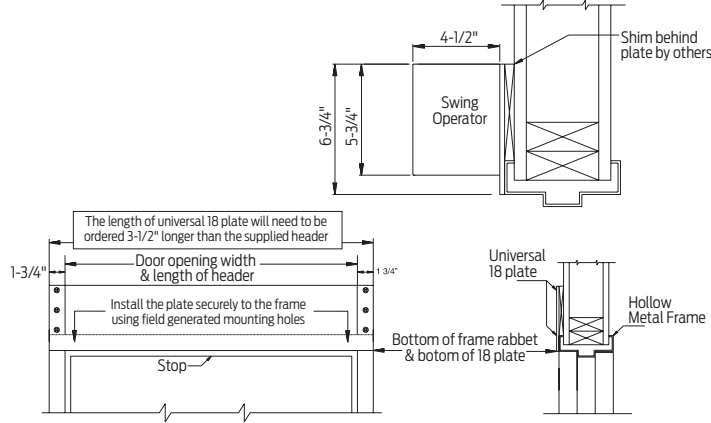
Double egress applications with safety sensors require LCN 9560 Series.

Note: Cannot be used with swing clear hinges, pocket pivots or balanced door.



### Hollow metal frame

The 18 plate is 1/4" thick and will need to be ordered 3 1/2" longer than the header to allow for mounting the angle brackets to the vertical side jambs. See illustration below.



Note: Suggested installation.

|                          |   |
|--------------------------|---|
| Butt hinges              | Should not exceed 5" (127 mm) in width  |
| Reveal for push          | Should not exceed 10" (254 mm) for Regular Arm and 20" (508 mm) for Long Arm  |
| Reveal for pull          | Should not exceed 4" (102 mm)   |
| Reveal                   | Double egress installations should not exceed 4" (102 mm)   |
| Top rail                 | Minimum 2 3/4" (70 mm)  |
| Head frame               | <ul style="list-style-type: none"> <li>Minimum 1 3/4" (44 mm)</li> <li>Face frame 6 3/4" (171 mm) total operator clearance</li> </ul>   |
| Opening and closing time | <ul style="list-style-type: none"> <li>Variable by adjustments to the electronic control box</li> <li>Maximum hold open time adjustable up to approximately 32 seconds</li> </ul> |
| System diagram           | See pages 45 for typical system wiring and page 44 for electrical data  |
| Maximum opening          | Template allows 90 degree power opening and 90 degree manual opening  |

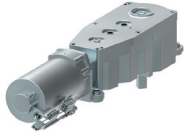
Notes:

- Push 'N' Go permits non-switch activation with a power boost providing additional latching force
- Electromechanical unit with microprocessor control
- Digital keypad for easy setup
- 72" header length is standard. Specify other length 52" - 98" (push), specify other length 60" - 98" (pull; double egress) (consult factory regarding this option)
- Adjustable hold open period of 2 - 32 seconds in automatic or manual mode
- Actuators available separately, see pages 100-117

Introduction  
 Product selection guide  
 Pneumatic systems Auto equalizers 2610/4810/4820/4840/7900 Series  
 Electrohydraulic systems Auto equalizers 4630/4640 Series  
 Electromechanical systems Benchmark 9130/9140/9150 Series  
 Electromechanical systems Senior Swing 2810/2850/2860/9530/9540/9550/9560 Series  
 Actuators and accessories

## Accessories

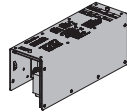
### Motor gearbox



**9550-3454  
Standard Motor Gearbox (MGB)**

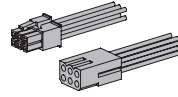
- Senior Swing
- Handed
- Driving mechanism for operator
- Provides maximum 15 lbs opening force

### Control box



**9550-3462  
Standard Controller (CTRL)**

- Electronic controlling device for Senior Swing



**9550-982  
Companion Cable**

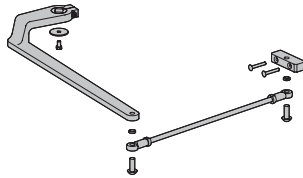
- Cable that allows one control box to run two motor gear boxes
- For use with Senior Swing

### Arm



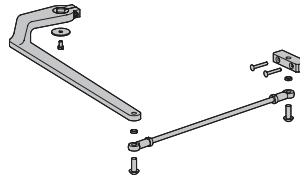
**9550-3077PLCM  
Standard Arm Assembly with Track Roller (STDTRKARM2)**

- Handed
- Includes 3077 regular arm assembly, 3038 track, and 3034 track roller



**9550-3077L  
Long Arm (LONG)**

- Handed
- Includes 77 main arm assembly and 79LR linkage assembly



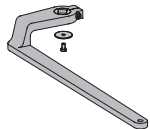
**9550-3077  
Regular Arm (REGARM)**

- Handed
- Includes 77 main arm assembly and 79 linkage assembly



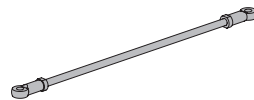
**9550-3077T  
Standard Arm (STDTRKARM)**

- Handed
- Track roller not included



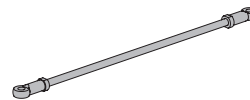
**9550-77  
Main Arm**

- Handed
- Attaches to motor gearbox



**9550-79  
Linkage Assembly**

- 15"
- Threaded rod attaches to door
- Extends from main arm



**9550-79LR  
Linkage Assembly**

- 32"
- Threaded long rod attaches to door
- Extends from main arm
- Used for reveal 10" to 20"

### Track



**9550-3038  
Track**

- Non-handed
- Standard



**9550-73  
Track End Cap**

- Black plastic end caps



**9550-3034  
Roller**

- Quiet low friction roller assembly

# Accessories

## Brackets



- 9550-275 Mounting Bracket**
- Motor gearbox mounting bracket for 2 3/4" offset pivot or butt hinge installations
  - Front bracket

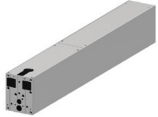


- 9550-3018 Rear Mounting Bracket**
- Motor gearbox mounting bracket



- 9550-334-1 Angle Brackets (HLB)**
- Mounting bracket for surface applications (includes 2 mounting brackets)

## Header



- 9550-3572HL Standard Mounting Header (HDR)**
- Pair door, two operators
  - Specify other length 52" to 98" (push)
  - Specify other length 54" to 98" (pull; double egress)
  - Standard

## End cap



- 9550-334 Header End Caps**
- With openings for wiring



- 9550-334-2 Dress plates (HLD)**
- Metal finish end cap

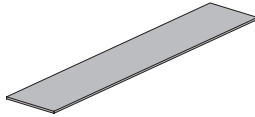
## Installation accessories



- 9550-11A Spindle Plate**
- Hides bottom of motor gearbox
  - Completes header box
  - Cutout allows for motor gearbox shaft
  - For 2 3/4" offset pivot or butt hinge installations



- 9550-12 Filler Plate**
- Blank
  - Completes length of header box
  - Specify length



- 9550-18 Mounting Plate**
- Optional mounting plate for standard hollow metal door frames
  - Specify length 68 1/2" to 101 1/2" maximum when using angle brackets
  - Specify length 65" to 98" maximum when using dress plates
- Note: The length of a universal 18 plate will need to be ordered 3 1/2" longer than the supplied header when using angle brackets.

Introduction  
 Product selection guide  
 Pneumatic systems / Auto equalizers / 2610/4810/4820/4840/7900 Series  
 Electrohydraulic systems / Auto equalizers / 4630/4640 Series  
 Electromechanical systems / Benchmark / 9130/9140/9150 Series  
 Electromechanical systems / Senior Swing / 2810/2850/2860/9530/9540/9550/9560 Series  
 Actuators and accessories