

# 9540 Series



The 9540 Senior Swing by LCN is an ADA door operator that is a two-in-one swing door operator. Senior swing operator when activated, opens doors automatically for wheelchair access, yet allows for manual operation for regular pedestrian traffic.

## Features

<b>Certifications</b>	Grade 1 - ANSI A156.19, UL325/228, UL1998, ADA, 100 Hour Salt Spray, Meets BAA - Buy American Act
<b>Fluid</b>	All Weather Fluid
<b>Handing</b>	Handed
<b>Door width</b>	<ul style="list-style-type: none"> <li>▪ Combined width min 33" - 48"</li> <li>▪ Single door - width per leaf 33" minimum to 48" maximum</li> </ul>
<b>Warranty</b>	2 years

<b>Fasteners</b>	Machine Screws (MS)
<b>Mounting</b>	Single door, surface mount, offset pivot, butt hinge, push side
<b>Arms</b>	Regular Arm (3077)
<b>Finishes/colors/powder coat</b>	<ul style="list-style-type: none"> <li>▪ 628 Aluminum, Anodized</li> <li>▪ 710 Dark Brown, Anodized</li> </ul>

**Special templates** | Customized installation templates or products may be available to solve non-standard applications. Contact LCN Product Support for assistance.

Mounting	Handing	Finish	Cover	Arm function
Surface mount single door	Handed	Standard anodized	Standard (single lever)	Regular (push/pull)
Surface mount simultaneous pair	Non-handed	Metal	Double egress (double lever)	Offset pivot arm
Surface mount independent pair			Offset egress (push/pull)	Center pivot arm
Concealed single door				
Concealed simultaneous pair				
Concealed independent pair				

■ Available  
■ Not available

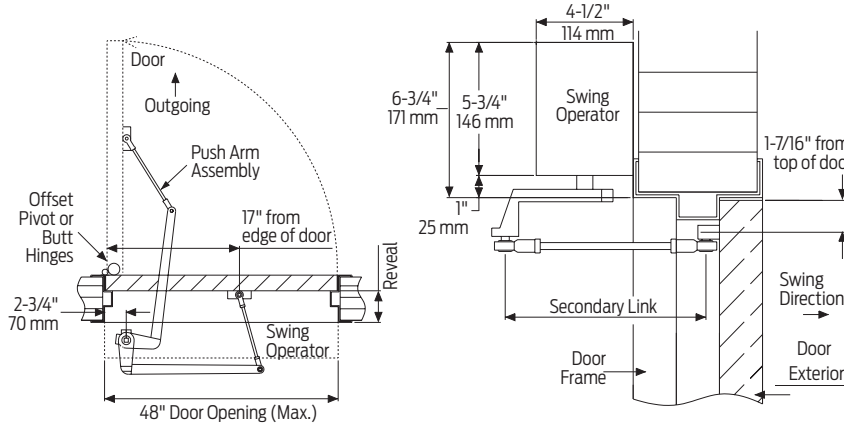
Introduction  
 Product selection guide  
 Pneumatic systems / Auto equalizers / 2610/4810/4820/4840/7900 Series  
 Electrohydraulic systems / Auto equalizers / 4630/4640 Series  
 Electromechanical systems / Benchmark / 9130/9140/9150 Series  
 Electromechanical systems / Senior Swing / 2810/2850/2860/9530/9540/9550/9560 Series  
 Actuators and accessories

# Mounting details

## Top jamb single door mounting

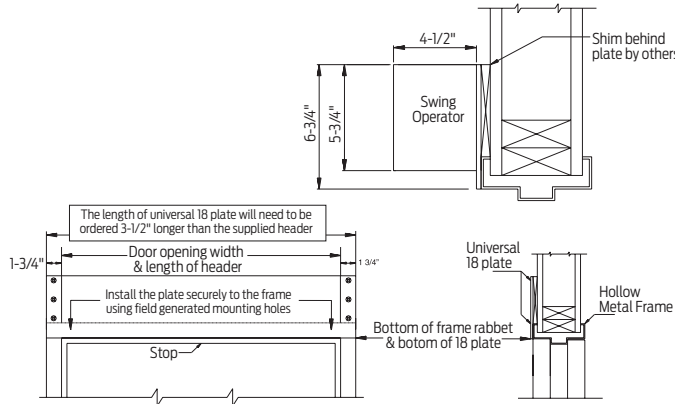
### Offset pivot/butt hinge, center pivot, push

Note: Consult factory for all balance door installations.



### Hollow metal frame

The 18 plate is 1/4" thick and will need to be ordered 3 1/2" longer than the header to allow for mounting the angle brackets to the vertical side jambs. See illustration below.



Note: Suggested installation.

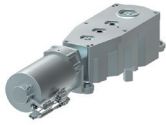
Butt hinges	Should not exceed 5" (127 mm) in width
Reveal	Push installations should not exceed 10" (254 mm) for regular arm and 20" (508 mm) for long arm
Top rail	Minimum 2 3/4" (70 mm)
Head frame	Minimum 1 3/4" (44 mm); face frame 6 3/4" (171 mm) total operator clearance
Opening and closing time	<ul style="list-style-type: none"> <li>Variable by adjustments to the electronic control box</li> <li>Maximum hold open time adjustable up to approximately 32 seconds</li> </ul>
System diagram	See pages 45 for typical system wiring and page 44 for electrical data
Maximum opening	Template allows 90 degree power opening and 90 degree manual opening

Notes:

- Push N' Go permits non-switch activation with a power boost providing additional latching force
- Electromechanical unit with microprocessor control
- Digital keypad for easy setup
- 36" header length is standard. Specify 33" - 48" max
- Double Door Header available up to 98", specify other length 49"- 98" max
- Consult factory regarding this option
- Adjustable hold open period of 2 - 32 seconds in automatic or manual mode
- Actuators available separately, see pages 100-117

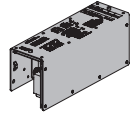
## Accessories

### Motor gearbox



- 9540-3454  
Standard Motor Gearbox (MGB)**
- Senior Swing
  - Handed
  - Driving mechanism for operator
  - Provides maximum 15 lbs opening force

### Control box



- 9540-3462  
Standard controller (CTRL)**
- Electronic controlling device for Senior Swing

### Brackets



- 9540-275  
Mounting Bracket**
- Motor gearbox mounting bracket for 2 3/4" offset pivot or butt hinge installations
  - Front bracket

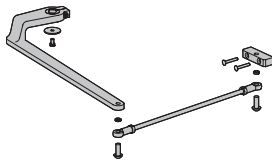


- 9540-3018  
Rear Mounting Bracket**
- Motor gearbox mounting bracket
  - Rear bracket

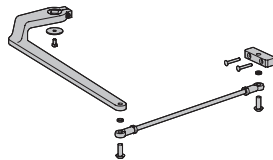


- 9540-334-1  
Angle Brackets (HLB)**
- Mounting bracket for surface applications (includes 2 mounting brackets)

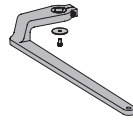
### Arm



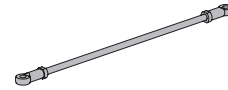
- 9540-3077  
Regular Arm (REGARM)**
- Handed
  - Includes 77 main arm assembly and 79 linkage assembly



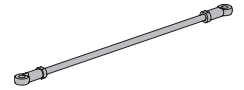
- 9540-3077L  
Long Arm (LONG)**
- Handed
  - Includes 77 main arm assembly and 79LR linkage assembly



- 9540-77  
Main Arm**
- Handed
  - Attaches to motor gearbox



- 9540-79  
Linkage Assembly - 15"**
- Threaded rod attaches to door
  - Extends from main arm

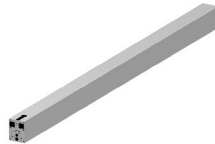


- 9540-79LR  
Linkage Assembly - 32"**
- Threaded long rod attaches to door
  - Extends from main arm
  - Used for reveal 10" to 20"

### Header



- 9540-3572HL  
Standard Mounting Header (HDR)**
- Single door, single operator
  - Specify length 33" to 48" maximum
  - Standard



- 9540-3572DD  
Double Door Header (HDR2)**
- Double door, single operator
  - Specify length 49" to 98" maximum
  - Standard

### End cap



- 9540-334  
Header End Caps**
- With openings for wiring



- 9540-334-2  
Dress plates (HLD)**
- Metal finish end cap

### Installation accessories



- 9540-11A  
Spindle Plate**
- Hides bottom of motor gearbox
  - Completes header box
  - Cutout allows for motor gearbox shaft
  - For 2 3/4" offset pivot or butt hinge installations



- 9540-12  
Filler Plate Blank**
- Completes length of header box (specify length)



- 9540-18  
Mounting Plate**
- For standard hollow metal door frames
  - Specify length 55 1/2" to 101 1/2" maximum when using angle brackets
  - Specify length 52" to 98" maximum when using dress plates
  - Optional

Note: The length of a universal 18 plate will need to be ordered 3 1/2" longer than the supplied header when using angle brackets.

Introduction  
 Product selection guide  
 Pneumatic systems  
 Auto equalizers  
 2610/4810/4820/4840/7900 Series  
 Electrohydraulic systems  
 Auto equalizers  
 4630/4640 Series  
 Electromechanical systems  
 Benchmark  
 9130/9140/9150 Series  
 Electromechanical systems  
 Senior Swing  
 2810/2850/2860/9530/9540/9550/9560 Series  
 Actuators and accessories