

9530 Series



The 9530 Senior Swing by LCN is an ADA door operator that is a two-in-one swing door operator. Senior swing operator when activated, opens doors automatically for wheelchair access, yet allows for manual operation for regular pedestrian traffic.

Features

Certifications	Grade 1 - ANSI A156.19, UL325/228, UL1998, ADA, 100 Hour Salt Spray, Meets BAA - Buy American Act
Fluid	All Weather Fluid
Handing	Handed
Door width	<ul style="list-style-type: none"> ▪ Minimum 33" - 48" ▪ Single door - width per leaf 33" minimum to 48" maximum
Warranty	2 years

Fasteners	Machine Screws (MS)
Mounting	Single door, surface mount, offset pivot, butt hinge, pull side
Arms	Standard arm (3077T)
Finishes/colors/powder coat	<ul style="list-style-type: none"> ▪ 628 Aluminum, Anodized ▪ 710 Dark Brown, Anodized

Special templates | Customized installation templates or products may be available to solve non-standard applications. Contact LCN Product Support for assistance.

Mounting	Handing	Finish	Cover	Arm function
Surface mount single door	Handed	Standard anodized	Standard (single lever)	Offset pivot arm
Surface mount simultaneous pair	Non-handed	Metal	Regular (double lever)	Center pivot arm
Surface mount independent pair			Double egress (push/pull)	
Concealed single door				
Concealed simultaneous pair				
Concealed independent pair				

■ Available
■ Not available

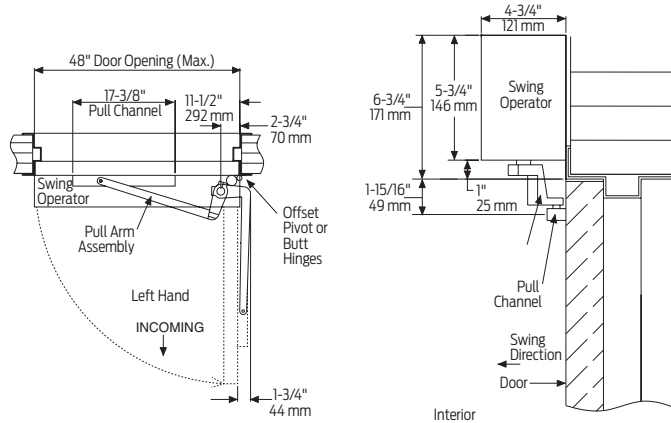
Introduction
 Product selection guide
 Pneumatic systems / Auto equalizers / 2610/4810/4820/4840/7900 Series
 Electrohydraulic systems / Auto equalizers / 4630/4640 Series
 Electromechanical systems / Benchmark / 9130/9140/9150 Series
 Electromechanical systems / Senior Swing / 2810/2850/2860/9530/9540/9550/9560 Series
 Actuators and accessories

Mounting details

Top jamb single door mounting

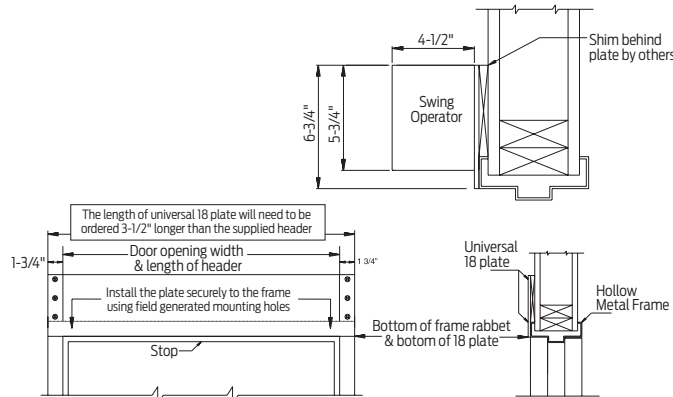
Offset pivot/butt hinge, center pivot, pull

Note: Cannot be used with swing clear hinges, pocket pivots or balanced doors.



Hollow metal frame

The 18 plate is 1/4" thick and will need to be ordered 3 1/2" longer than the header to allow for mounting the angle brackets to the vertical side jambs. See illustration below.



Note: Suggested installation.

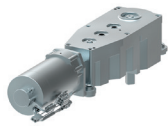
Butt hinges	Should not exceed 5" (127 mm) in width
Reveal	Should not exceed 4" (102 mm)
Top rail	Minimum 2 3/4" (70 mm)
Head frame	Minimum 1 3/4" (44 mm); face frame 6 3/4" (171 mm) total operator clearance
Opening and closing time	<ul style="list-style-type: none"> Variable by adjustments to the electronic control box Maximum hold open time adjustable up to approximately 32 seconds
System diagram	See pages 45 for typical system wiring and page 44 for electrical data
Maximum opening	Template allows 90 degree power opening and 90 degree manual opening

Notes:

- Push N' Go permits non-switch activation with a power boost providing additional latching force
- Electromechanical unit with microprocessor control
- Digital keypad for easy setup
- 36" header length is standard. Specify 33" - 48" max
- Double Door Header available up to 98", specify other length 49"- 98" max
- Consult factory regarding this option
- Adjustable hold open period of 2 - 32 seconds in automatic or manual mode
- Actuators available separately, see pages 100-117

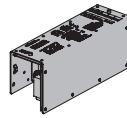
Accessories

Motor gearbox



- 9530-3454
Standard Motor Gearbox (MGB)**
- Senior Swing
 - Handed
 - Driving mechanism for operator
 - Provides maximum 15 lbs opening force

Control box



- 9530-3462
Standard Controller (CTRL)**
- Electronic controlling device for Senior Swing

Arm



- 9530-3077PLCM
Standard Arm Assembly with Track Roller (STDTRKARM2)**
- Handed
 - Track roller included (includes 3038, 3077T, 3034 and 73)



- 9530-3077T
Standard Arm (STDTRKARM)**
- Handed
 - Track roller not included

Track



- 9530-3038
Track**
- Non-handed
 - Includes 3034 and 73



- 9530-73
Track End Cap**
- Black plastic end caps

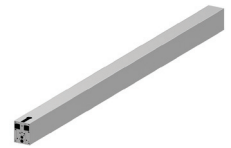


- 9530-3034
Roller**
- Quiet low friction roller assembly

Header



- 9530-3572HL
Standard Mounting Header (HDR)**
- Standard
 - Single door, single operator
 - Specify length 33" to 48" maximum



- 9530-3572DD
Double Door Header (HDR2)**
- Standard
 - Double door, single operator
 - Specify length 49" to 48" maximum

Brackets



- 9530-275
Mounting Bracket**
- Motor gearbox mounting bracket for 2 3/4" offset pivot or butt hinge installations
 - Front bracket



- 9530-3018
Rear Mounting Bracket**
- Motor gearbox mounting bracket
 - Rear bracket



- 9530-334-1
Angle Brackets (HLB)**
- Mounting bracket for surface applications (includes 2 mounting brackets)

End cap



- 9530-334
Header End Caps**
- With openings for wiring



- 9530-334-2
Dress plates (HLD)**
- Metal finish end cap

Installation accessories



- 9530-11A
Spindle Plate**
- Hides bottom of motor gearbox
 - Completes header box
 - Cutout allows for motor gearbox shaft
 - For 2 3/4" offset pivot or butt hinge installations



- 9530-12
Filler**
- Plate blank
 - Completes length of header box (specify length)



- 9530-18
Mounting Plate**
- Optional mounting plate for standard hollow metal door frames
 - Specify length 36 1/2" to 101 1/2" maximum, when angle brackets
 - Specify length 33" to 98" maximum when using dress plates

NOTE: The length of a universal 18 plate will need to be ordered 3-1/2" longer than the supplied header when using angle brackets

Introduction
 Product selection guide
 Pneumatic systems / Auto equalizers / 2610/4810/4820/4840/7900 Series
 Electrohydraulic systems / Auto equalizers / 4630/4640 Series
 Electromechanical systems / Benchmark / 9130/9140/9150 Series
 Electromechanical systems / Senior Swing / 2810/2850/2860/9530/9540/9550/9560 Series
 Actuators and accessories