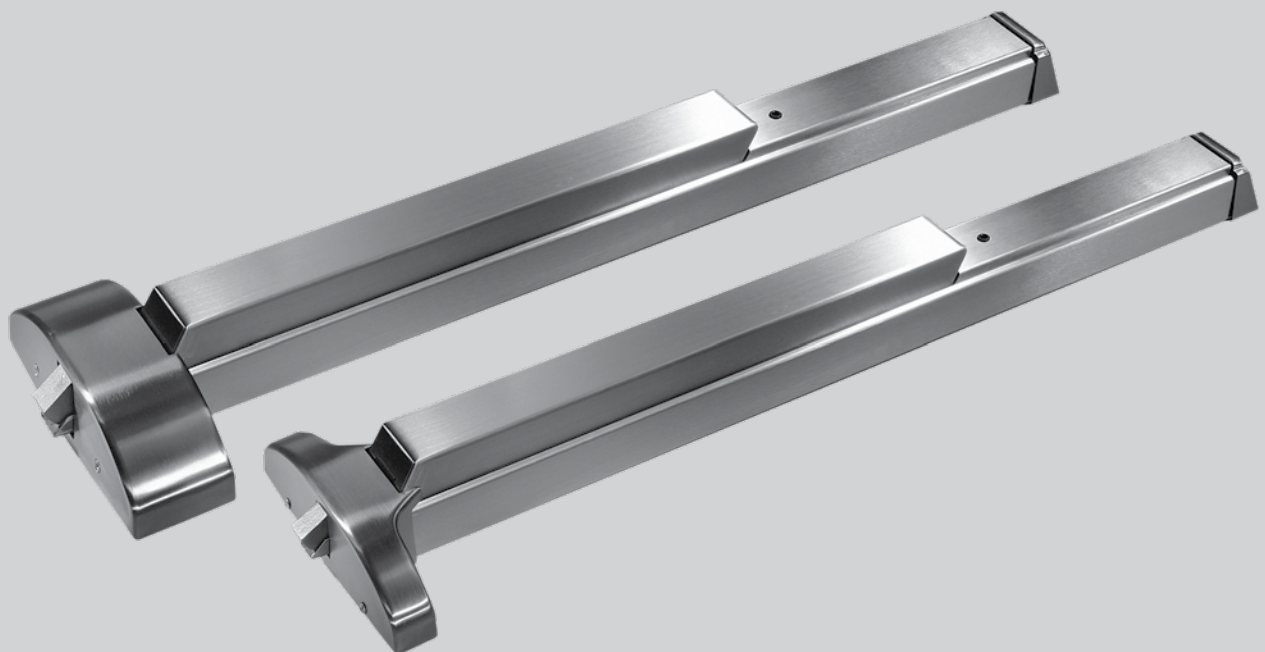





# 9000 Series Premium Exit Devices



## 9000 Series Wide & Narrow Stile Exit Devices

### Certification

- Certified/listed to ANSI/BHMA 156.3, Grade 1 for exit devices. 
- U.L. and C.U.L. listed under their continuing reinspection programs and conforms to standard U.L. 10C positive pressure testing. 
- Complies with NFPA 101 life safety code. Fire rated devices comply with NFPA 80 fire doors and windows.
- Devices, trim, pulls, and levers comply with the Americans for Disabilities Act, 1994, and ICC A117.1 for accessible and usable buildings and facilities. 
- Contributes to U.S. Green Building Council, LEED MR Credits 2.1, 4.1, 4.2 and 5.1.
- Listed with the California Department of Forestry and Fire Protection, Office of the State Fire Marshal (wide stile devices only).
- Hurricane-code approved to Miami-Dade County Florida and Florida State Building Code acceptance (9300, 9400, 9500, 9700).
- Meets the requirements of the California Building Code (2013) Sec. 11B-309.4 (9300BF, 9500BF, 9700BF).

### Specifications

- All devices to have heavy-duty cast chassis.
- All device touchbar, rail, and cover assemblies shall be constructed of heavy gauge solid wrought materials for true architectural finishes or color coated finishes.
- The partial-length touchpad assembly accommodates field installation of options such as cylinder dogging and exit alarm.
- Non-labeled units to have hex-key dogging standard. Fire rated versions available for labeled applications.

- Surface vertical rod devices shall have pullman type top latch bolts and round slidebolt bottom latches.
- All devices to have deadlocking latch bolts with 3/4" throw.
- All units shall offer a full range of free wheeling operational trim, except mortise devices.
- All units shall offer optional rigid and clutch-style trim, where applicable.
- All devices to be furnished with appropriate mounting hardware including both wood and machine screws, as well as sex nuts where required.

### Optional Specifications

- Non-labeled devices to have cylinder dogging. Mortise cylinder included. Specify **CD**.
- All surface/concealed vertical rod devices to have pullman type bottom latch bolt. Specify **P**.
- All surface/concealed vertical rod devices to have extended top rod up to 10'. Specify **ETR** for 8', 9', or 10'.
- All surface/concealed vertical rod devices to be furnished less bottom rod. Specify **LB**.
- Devices to have motorized latch bolt retraction to provide remote access from the secure side of door. Can also be used to electrically dog/hold the exit push bar in a retracted position during non-secure hours (latch bolt is retracted). Specify **MLR**. (**MLR** is powered by the PS610 or PS532 power supply)
- Devices to have electric latch bolt retraction to provide remote access from the secure side of door. Can also be used in conjunction with low energy/automatic door operator. Specify **ES**. (**ES must be powered by PS-501 power supply and use ES-105 power transfer**)
- Devices to have electric latch retraction option for battery back-up power supply (requires PS406BB or PS-BB power supply and ES105 power transfer). Specify **E-**.
- Devices to have a controlled delayed egress while simultaneously sounding a local and remote audible alarm. After the delay time has elapsed, unrestricted emergency egress is available. Specify **DE**. (Not available with 9400 or 9800, requires ES100 power supply, ES105 power transfer, and FL)
- Devices to have a latch monitor to report the latch bolt status. Specify **LM**.
- Devices to be furnished with two switches in the touchbar to provide notification when touchbar is depressed. Specify **MS**.
- Devices to have latch monitor with monitor switches in touchbar. Specify **LM/MS**. Devices to have latch monitor with monitor switches and a bypass to permit authorized exit. Specify **LM/MS BP**.
- Devices to have one of the following exit alarm options: battery-powered exit alarm (**BA**), battery-powered exit alarm with a 4-minute reset (**BAR**), or direct hard-wired exit alarm (**DA**).
- Devices to use a vision lite shim kit to raise the device from the door surface to accommodate glass light molding. Specify **GK9000** (wide stile) or **GK9200** (narrow stile).
- All devices for labeled wood or composite doors to be furnished with sex bolts. Specify **SNB**.

- All concealed vertical rod devices installed in aluminum doors to be furnished with appropriate brackets for aluminum door applications. **See page 6 (A)**.
- All devices to use tamper-resistant security screws. Specify **T**.
- All devices to be furnished with rigid trim. Specify **R** after trim.
- All devices to be furnished with clutch-style lever trim. Specify **C** after lever trim.

### Finishes

#### Architectural Finishes

- Brass: 605 (Bright) or 606 (Satin)
- Bronze: 611 (Bright), 612 (Satin), or 613 (Oxidized Satin)
- Nickel: 619 (Satin)
- Black: 693
- Chrome: 625 (Bright) or 626 (Satin)
- Stainless: 629 (Bright) or 630 (Satin)

#### Powder Coated Finishes

- Aluminum: 689
- Bronze: 691 (Dull) or 695 (Dark Duranodic)
- Black: 693
- Gold: 696
- Clear Powder Coat available over 630 – Stainless Steel Specify **PC**
- Anti-Microbial: Specify **AM**

### Warranty

For details, refer to **Limited Warranty** on our website at [go.dormakaba.com/Terms-DA](http://go.dormakaba.com/Terms-DA)

### NOTE:

\* No dogging available.

\*\* The 9000 Series narrow stile bar lengths are designed for use on narrow stile aluminum entrance doors with a 1/2" blade stop frame. Other applications may require field cutting the bar.

9000 Series Data & Features	Model 9100	Model 9300	Model 9400	Model 9500	Model 9600	Model 9700	Model 9800
Wide Stile Exit Device	●	●	●	●	N/A	N/A	N/A
Narrow Stile Exit Device	N/A	N/A	N/A	N/A	●	●	●
U.L. Listed for Hazard	●	●	●	●	●	●	●
U.L. Listed for Labeled Fire Doors (prefix F) *	○	○	○	○	○	○	○
Extended Life Cycle Testing	●	●	●	●	●	●	●
Latch Bolt Load Rated	N/A	●	N/A	N/A	N/A	●	N/A
Size <b>A</b> Doors (34"-48") (touchpad 24-5/8")	○	○	○	○	N/A	N/A	N/A
Size <b>B</b> Doors (28"-36") (touchpad 18-5/8") Default Wide	●	●	●	●	N/A	N/A	N/A
Size <b>C</b> Doors (25"-30") (touchpad 15-5/8")	○	○	○	○	N/A	N/A	N/A
Size <b>D*</b> Doors (25"-30", can be field cut 24") (touchpad 15-7/8")	○	○	○	○	N/A	N/A	N/A
Size <b>AA</b> Doors (32-1/2"-48")** (touchpad 24-5/8")	N/A	N/A	NA	N/A	○	○	○
Size <b>BB</b> Doors (27"-36")** (touchpad 18-5/8") Default Narrow	N/A	N/A	NA	N/A	●	●	●
Size <b>CC</b> Doors (23-1/2"-36")** (touchpad 15-5/8")	N/A	N/A	NA	N/A	○	○	○
Door Height up to 7' Default Vertical Rod	●	N/A	●	N/A	●	N/A	●
Door Height up to 8' (Specify 8')	○	N/A	○	N/A	○	N/A	○
Door Height up to 10' (over 8', specify actual door height and ETR)	○	N/A	○	N/A	○	N/A	○
Door Thickness 1-3/4" to 2-1/4"	●	●	●	●	●	●	●
Door Thickness 2-1/4" to 3-1/2"	N/A	N/A	N/A	N/A	○	○	○
Device Non-Handed	N/A	●	N/A	N/A	N/A	N/A	N/A
Device Handed but Field Reversible	●	N/A	●	N/A	●	N/A	●
Device Handed, Not Reversible	N/A	N/A	N/A	●	N/A	●	N/A
Hex Key Dogging (non-listed units only)	●	●	●	●	●	●	●
Cylinder Dogging (non-listed units only)	○	○	○	○	○	○	○
Round Bottom Slide Bolt (-) Default	●	N/A	●	NA	●	N/A	●
Deadlocking Pullman Type Bottom Latch Bolt (specify P)	○	N/A	○	N/A	○	N/A	○
Less Bottom Rod (specify LB)	○	N/A	○	N/A	○	N/A	○
Full Length Touch Bar (Not Available DE) (Specify FL)	○	○	○	○	○	○	○
Motorized Latch Bolt Retraction (specify MLR)	○	○	○	○	○	○	○
Electric Latch Bolt Retraction (specify ES)	○	○	○	N/A	○	○	○
Monitor Switch in Touchbar (specify MS)	○	○	○	○	○	○	○
Latch Bolt Monitor (specify LM)	○	○	○	○	○	○	○
Latch Monitor/Monitor Switch (specify LM/MS)	○	○	○	○	○	○	○
Latch Monitor/Monitor Switch with Bypass (specify LM/MS BP)	○	○	○	○	○	○	○
Exit Alarm (specify BA, BAR or DA)	○	○	○	○	○	○	○
Delayed Egress 15 sec (specify DE)	○	○	N/A	○	○	○	N/A
Clutch Style Lever Trim (specify C) Note: Clutch option available to C, R, G & T lever styles only	○	○	○	○	○	○	○
Rigid Lever Trim (specify R)	○	○	○	○	○	○	○
Motorized Dogging (specify MLR)	○	○	○	○	○	○	○
Glass Lite Shim Kit (wide stile, specify GK9000)	○	○	○	○	N/A	N/A	N/A
Glass Lite Shim Kit (narrow stile, specify GK9200)	N/A	N/A	N/A	N/A	○	○	○
Security Screws (specify T)	○	○	○	○	○	○	○
Sex Nuts (Specify SNB/Quantity)	○	○	○	○	○	○	○
Aluminum Door Latch Brackets. Specify A (9100/9600) or NS (9600)	○	N/A	N/A	N/A	○	N/A	N/A
Hurricane Code Rated (specify HC)	N/A	○	○	○	N/A	○	○
California Building Code compliant for maximum 5 lb operating force (specify BF)	N/A	○	N/A	○	N/A	○	N/A

● – Standard Feature ○ – Optional Feature N/A – Not Applicable \*\* See **NOTES** on previous page.

# Options

<b>BA</b>	Battery Powered Exit Alarm	<b>LM/MS</b>	Latch Monitor/Monitor Switch
<b>BAR</b>	Battery Powered Exit Alarm, (4) minute reset	<b>LM/MS BP</b>	Latch Monitor/Monitor Switch with Bypass
<b>DA</b>	Direct Wired Exit Alarm	<b>DE</b>	Delayed Egress, 15 sec (9100, 9300, 9500, 9600, 9700)
<b>CD</b>	Cylinder Dogging	<b>D3</b>	Delayed Egress, 30 sec (9100, 9300, 9500, 9600, 9700) requires special approval from authority having jurisdiction)
<b>MLR</b>	Motorized Latch Retraction / Electric Dogging	<b>DECBC</b>	Delayed Egress, CBC compliant
<b>ES</b>	Latch Retraction (9100, 9300, 9400, 9600, 9700, 9800)	-	Slide Bolt (9100, 9400, 9600, 9800)
<b>ETR</b>	Top Rod Extension (9100, 9400, 9600, 9800)	<b>P</b>	Pullman Bottom Latch, vertical rod only (9100, 9400, 9600, 9800)
<b>GK9000</b>	Vision Lite Shim Kit (Wide Stile)	<b>SNB</b>	Sex Nuts, specify quantity
<b>GK9200</b>	Vision Lite Shim Kit (Narrow Stile)	<b>A</b>	Wide Stile Aluminum Door Brackets (9100, 9600)
<b>LB</b>	Less Bottom Rod (9100, 9400, 9600, 9800)	<b>NS</b>	2-1/8" Narrow Stile Aluminum Door Bracket (9600 only)
<b>LM</b>	Latch Monitor	<b>WD</b>	Narrow Stile Wood or Hollow Steel Door Bracket (9600 only)
<b>MS</b>	Monitor Switch	<b>FL</b>	Full Length Touch Bar
<b>HC</b>	Hurricane Code Rated (9300, 9400, 9500, 9700, 9800)	<b>BF</b>	Barrier Free, CBC compliant (9300, 9500, 9700)

# Optional Electric Functions

## Motorized Latch Bolt Retraction

Specify **MLR**. A motor concealed in the touchbar assembly provides retraction of the latch bolt by drawing in the touch bar to allow access from the secure side of the door. MLR can also be used to electrically dog/hold the exit push bar in a retracted position during non-secure hours (latch bolt is retracted). Remote control can be accomplished with switching devices such as key switches and card readers that provide a normally open electrical contact. The motor is rated at 24 VDC, .88 AMP. The motor draws approximately 400 milliamp during continuous operation. Use of either PS610RF or PS532RF is recommended to power one or two MLR devices respectively. The 9000 MLR can also be powered with ED900 Low Energy ADA Operator.

## Electric Latch Bolt Retraction

Specify **ES**. A solenoid concealed in the touchbar assembly provides instantaneous retraction of the latch bolt to allow access from the secure side of the door. Remote control can be accomplished with switching devices such as key switches and card readers that provide a normally open electrical contact. The solenoid is rated for 24 VDC, 14–18 AMP continuous duty, 24 VDC, 14–18 AMP inrush for 200 milliseconds, 1 AMP holding current.

## Requires PS501 power supply.

## Battery Back-up

Battery Back-up power supply options are available when using either the PS406BB or PS462BB power supplies. Specify **E-** when ordering Electric Latch Bolt Retraction exit device.

## Requires PS501 power supply & ES105 power transfer.

Not available with **C** or **CC** size devices, or 9500 mortise exit devices.

## Monitor Switch

Specify **MS**. Two micro switches in the touchbar assembly functioning as form C contacts provide local and/or remote notification of two separate appliances when the touchbar is depressed. Each switch is rated for .5 AMP @ 28 VDC maximum.

## Latch Monitor

Specify **LM**. A microswitch attached to the device chassis provides local and/or remote notification of the exit device rods without depressing the touchbar. The single-pole, double-throw switch is rated at .50 AMP @ 28 VDC maximum.

## Latch Monitor with Monitor Switch

Specify **LM/MS**. A combination of Latch Monitor and Monitor Switch functions in one device.

## Latch Monitor with Monitor Switch & Bypass

Specify **LM/MS BP**. Same as LM/MS above, but an additional single-pole, double-throw switch is triggered by a mortise cylinder for alarm bypass. Cylinder furnished.

## Motorized Dogging

Specify **MLR**. This feature can be used to electrically dog/hold the exit push bar in a retracted position during non-secure hours. (Latch bolt is retracted.)

## PS Series Power Supplies

The **ES100 Power Supply** is capable of powering and controlling (1) DE9000 Series Exit Device.

- Input: 120 V
- Input Circuit Protection: 1.3 A fuse
- Output: 24 VDC, 6 A surge for 0.5 seconds, .65 A continuous, per zone
- Output Circuit Protection: 3 A push to reset circuit



breaker

- Enclosure: 8" H x 8" W x 4" D NEMA 1 Type enclosure for indoor use with hinged cover and knock-outs

The **PS501 Power Supply** is capable of powering and controlling (2) 9000 Series Exit Devices with the ES Electric Latch Bolt Retraction feature. Also has the capability of powering (2) additional 9000 Series Exit Devices with an optional card. Specify option **ES2 CARD**.

- Input: 120 volts
- Input circuit protection: 1 AMP circuit breaker
- Output: 36 VDC, 14–18 AMP surge, 2 AMP @ 5 volt continuous, per zone, unregulated, unfiltered
- Output circuit protection: 4 AMP fuse
- Enclosure: 8" H x 8" W x 4" D NEMA 1 Type enclosure for indoor use with hinged cover and knock-outs.

The **PS532RF Power Supply** is capable of powering and controlling (2) or **PS610RF** can power and control (1) 9000 Series Exit Device with the MLR Motorized Latch Bolt Retraction feature.

**NOTE:** The PS5352RF or PS610RF can be used with the ES105 power transfer cable, 75200 electric intermediate, or electric through wire hinges when rated to carry a minimum of 1 AMP continuous power. Power transfer device wires may require doubling or tripling depending on wire gage supplied.

- Input: 115VAC/60hz
- Output: PS532RF – 2.0A @ 24VDC, Class 2  
PS610RF – 1.0A @ 24VDC, Class 2
- Enclosure: PS532 – 14" H x 16" W x 6.5" D PS610 – 12.5" H x 12.5" W x 4" D

The **ES105** is a power transfer with stainless steel housing and flexible tube. Secure and inconspicuous channel to bring power from the frame to the door. Narrow, shallow channel easily mortises into door edges. Accepts up to 5/16" diameter wire bundle. Accommodates doors that swing open 120°. Unit is concealed when the door is closed. Suitable for wood, aluminum, or steel applications.



## Finish

Stainless: 630 (Satin)