



BEST 
dormakaba Group

7KC Series
Medium Duty Cylindrical Locks
by BEST



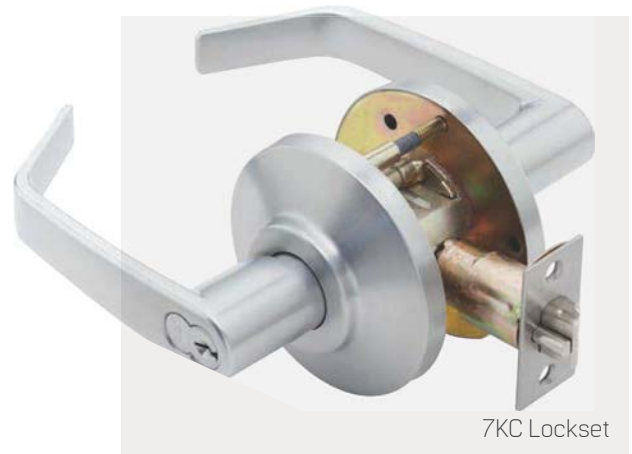
TABLE OF CONTENTS

Features	2	Cormax™ Patented Keying System	5
Specifications	2	Deadlocking Latches & Strikes	5-6
How To Order	3	Strikes & Door Preparation	6
Shipping Weights	3	Sample Specifications	7
Lever Styles & Trim	3	Service Equipment	7
Functions	4		

7KC Series – Features

- Cylindrical chassis to fit common door preparation.
- Standard and Drive-in latches available.
- Through-bolt mounting studs increase torque resistance.
- Quick rekeying with BEST interchangeable core.
- No exposed keeper hole on keyed levers for increased security.
- Hub torque spring provides extra resistance to lever sag.
- Snap-on inside rose (no exposed mounting screws).
- Keyed lever is removable only after removal of core.
- Internal steel mechanisms are corrosion treated for normal atmospheric conditions.
- ADA–Americans With Disabilities Act: 7KC series – The design and operation of the BEST® cylindrical lock meets the intent of the standard for ANSI A117.1 section 404.2.6 and Illinois Accessibility Standard 400.310 (j)(8).
- Lockset reversible for either hand of door without removing keyed lever.
- Underwriters Laboratories®: 7KC series – Listed by Underwriters Laboratories for use on 3 Hr, A label for single (4' x 8') doors.
- Builders Hardware Manufacturers Association: 7KC series – Listed by BHMA for A156.2, Series 4000, Grade 2.
- ADA–Americans With Disabilities Act: 7KC series – The design and operation of the BEST® cylindrical lock meets the intent of the standard for ANSI A117.1 section 404.2.6 and Illinois Accessibility Standard 400.310 (j)(8).
- California State Fire Marshal: 7KC - series 14 & 15 lever conforms with California Title 24.

Products covered by one or more of the following patents: 5,590,555 5,794,472



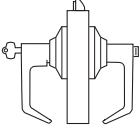
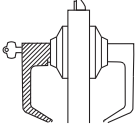
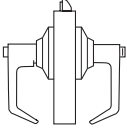
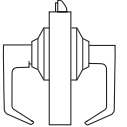
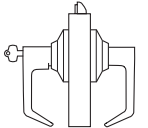
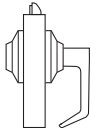
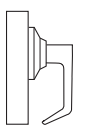
7KC Lockset



Specifications		
Backset	7KC2 Series: 2 3/8" 7KC3 Series: 2 3/4"	7KC4 Series: 3 3/4" 7KC5 Series: 5"
Finishes	605 – bright bras 606 – satin bras 612 – satin bronze	613 – oxidized satin bronze, oil rubber 625 – bright chromium plate 626 – satin chromium plated
Interchangeable core	Solid brass, pin-tumbler type in lever with 7-pin core. BEST Patented Keying System optional.	
Latch	1/2" throw deadlocking latch. Front: 2 1/4" x 1 1/8" x 5/32" standard for 2 3/4" backset; 2 1/4" x 1" x 5/32" for 2 3/8" backset.	
Lever	5 1/4" long handle with return. Projection on door 2 1/2". Zinc base, plated to match finish.	
Material	Component parts include brass, bronze or zinc. Internal parts are zinc dichromate steel.	
Mounting	2 1/8" diameter bore for lock housing, 1" diameter for latch tube.	
Rose	D – 3 1/2" diameter mounting screws concealed.	
Strike	STK (standard) – 2 3/4" x 1 1/8" with curved lip & box. (ANSI A115.2 for 1 3/8" doors). S3 – 4 7/8" x 1 1/4" with curved lip & box. (ANSI A115.2 for 1 3/4" doors).	
Door thickness	1 3/8" to 2"	

NOTE: When a heavy duty cylindrical lockset is required, our heavy duty 9K series is recommended.

Functions

Function & Diag. (ANSI No.)	Description	Outside Lever		Inside Lever	
		Latched by	Locked by	Unlocked by	Locked by
Single keyed					
Entry (AB) F109-Grade 2 	Rotating inside lever Rotating the outside lever – only when the inside push button is out Turning key in outside lever	Pushing the inside button Pushing and turning the inside button. Turning the button keeps the outside lever locked until the button is turned back	Turning the key in the outside lever (only when the button is not turned) Rotating the inside lever (only when the button is not turned) Closing the door (only when the button is not turned)	Cannot be locked	Always Unlocked
Storeroom (D) F86-Grade 2 	Turning key in the outside lever Rotating inside lever	Always locked	Cannot be unlocked	Cannot be locked	Always Unlocked
Privacy (L) F76-Grade 2 	Rotating inside lever Rotating outside lever – only when inside push button is out	Pushing inside button	Rotating the outside slotted button Rotating the inside lever, Closing the door	Cannot be locked	Always Unlocked
Passage (N) F75-Grade 2 	Rotating inside lever Rotating outside lever	Cannot be unlocked	Always unlocked	Cannot be locked	Always Unlocked
Classroom (R) F84-Grade 2 	Rotating inside lever Turning key in outside lever when outside lever is locked Rotating outside lever when not locked by key	Turning key in outside lever	Turning key in outside lever	Cannot be locked	Always Unlocked
Exit (Y) Grade 2 	Rotating the inside lever	No outside lever - Blank rose	No outside lever - Blank rose	Cannot be locked	Always Unlocked
Single Dummy (IDT) Grade 2 	This is a single, surface-mounted lever for an inactive door or a non-latching door				