

QUADSCAN

DOOR MOUNTED, ACTIVE INFRARED SAFETY SENSOR WITH BACKGROUND SUPPRESSION



PRIMARY APPLICATIONS



DESCRIPTION

BEA's Quadscan is an active infrared, external monitored*, standalone, door-mounted safety sensor that is compliant with current ANSI standards.

The Quadscan can be adjusted from 43 to 118 inches mounting height. At 78 inches mounting height, four AIR safety spots provide approximately 16 inches of safety protection width per sensor.

The Quadscan output offers individual safety side and approach side relays.

Four DIP switches provide user friendly adjustment for door side, AIR frequency, background reflectivity and uncovered zone height.

FEATURES & BENEFITS

- Easy installation and set up without need for remote control
- Independent relays for approach and safety side
- Four DIP switches for user friendly adjustments
- Master slave configuration for ease of wiring
- Universal module for both leading edge and hinge side protection
- External monitoring* for improved system safety

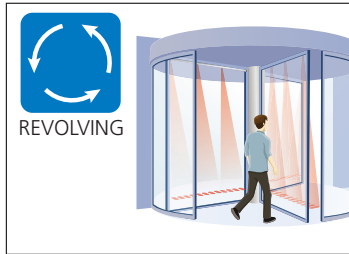
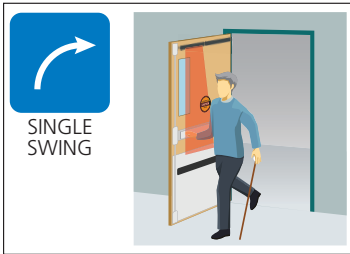
* External monitoring requires a monitoring capable door control



BEA, Inc.
RIDC Park West
100 Enterprise Drive
Pittsburgh, PA 15275-1213

Customer Service: 800.523.2462
Technical Support: 800.407.4545
www.BEAinc.com

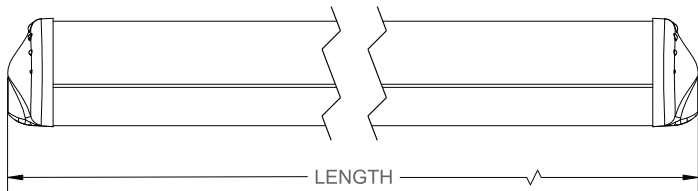
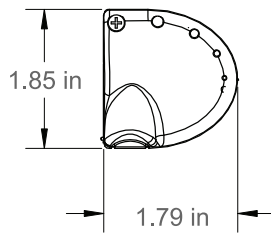
APPLICATIONS



TECHNICAL SPECIFICATIONS

Technology	Active Infrared
Mounting Height	43 in to 118 in (3.5 ft to 9.8 ft)
Max. Number of Modules	4; 6 if 24 VDC
Detection Field at Finished Floor (W x D x H) with 4 active spots	15.75 in x 2.37 in @ 78 in
Input	1 Optocoupler Free of Potential Contact
Max. Contact Voltage	30 V
Voltage Threshold	High: >10 VDC; Low: <1 VDC
Output	2 Relays Free of Potential Contact
Max. Contact Voltage	42 V AC/DC
Max. Contact Current	1 A (Resistive)
Max. Switching Power	30 W (DC); 60 VA (AC)
Supply Voltage	12 V to 24 VAC ±10% 12 V to 30 VDC -5%; +10%
Max Power Consumption (EACH MODULE)	65 mA @ 24 VAC 75 mA @ 24 VDC
Object Reflectivity	Min. 5% @ IR-wavelength of 850 nm
Degree of Protection	IP53
Temperature Range	-13°F to +131°F 0 to 95% Relative Humidity, Non-condensing
Norm Conformance	EMC 2004/108/EC; MD 2006/42/EC; EN ISO 13849-1:2008; Performance Level CAT 2; EN 12978

TECHNICAL DRAWING

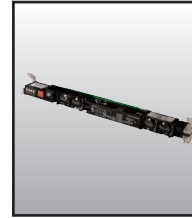


10QUADSCANI13 - 13 in
 10QUADSCANI - 34.5 in
 10QUADSCANII - 34.5 in
 10QUADSCANII40 - 40 in
 10QUADSCANII42 - 42 in

PRODUCT FAMILY



QUADSCAN
DOOR MOUNTED,
ACTIVE INFRARED
SAFETY SENSOR



10QSMMASTER
SENSOR MODULE

Quadscan Series	Part Number	Description
Quadscan I	10QUADSCANI	1 Module 34.5 in end cap to end cap
Quadscan II	10QUADSCANII	2 Modules 34.5 in end cap to end cap
Quadscan III	10QUADSCANIII	3 Modules 34.5 in end cap to end cap

Quadscan Custom Series	Part Number	Description
Quadscan I	10QUADSCANICUSTOM	1 Module Custom Length
Quadscan II	10QUADSCANIICUSTOM	2 Modules Custom Length
Quadscan III	10QUADSCANIIICUSTOM	3 Modules Custom Length
Quadscan IV	10QUADSCANIVCUSTOM	4 Modules Custom Length

www.BEAinc.com

© 2015 BEA, Inc. All rights reserved.

QUADSCAN DOOR MOUNTED, ACTIVE INFRARED SAFETY SENSOR WITH BACKGROUND SUPPRESSION

BEA, Inc.
 RIDC Park West
 100 Enterprise Drive
 Pittsburgh, PA 15275-1213

Customer Service: 800.523.2462
 Technical Support: 800.407.4545

