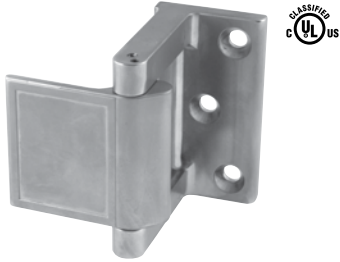


## Wall Guard No. 606

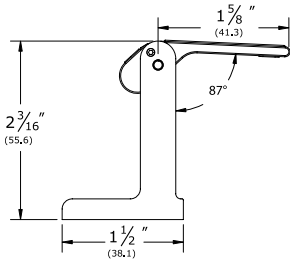
- Material:** Clear rubber  
**Other:** Sold in sheets of 55  
**Features:** Self-adhesive mounting

No.	Fastener	Size	Weight
606	Self-adhesive back	1" x 1"	0.4 lbs./55



## Privacy Door Latch No. PDL (formerly 607)

- Material:** Zinc die cast  
**Finishes:** BRS, DBRS, STNN, CRM, DCRM, ORB  
**Features:**
- ADA compliant
  - Enhanced in room privacy
  - Easy to install
  - For use with UL Classified fire doors for use with hollow metal steel composite type fire doors rated up to and including 3 hrs Wood composite type fire doors rated up to and including 1½ hrs and 20 minutes without hose stream



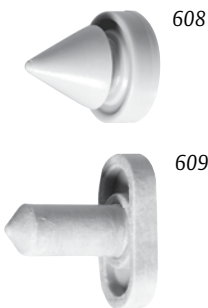
No.	Fastener	Size	Weight
PDL	#12 x 1¼" FH SMS	1½" x 2 <sup>13</sup> / <sub>16</sub> "	0.75 lbs.



## Door Silencer No. 608CA

- Material:** Clear rubber  
**Other:** Sold in packages of 300  
**Features:** Self-adhesive mounting

No.	Fastener	Size	Weight
608CA	¾" dia. x 1/8"	Metal or wood	0.2 lbs./300



## Door Silencers No. 608, 609

- Material:** DuraFlex gray rubber  
**Other:** Sold in packages of 100

No.	Size	Frame Type	Weight	ANSI A156.16
608	½" dia. x 5/8"	Metal	1.3 lbs./500	L03011
609	¾" x ¾"	Wood	1.3 lbs./500	L03021

### ASSA ABLOY

The global leader in  
door opening solutions