



Superior door control  
for rigorous, high-use applications

# 6000 S E R I E S

LOW ENERGY OPERATOR

CATALOG

**Norton**<sup>®</sup>

**ASSA ABLOY**

ASSA ABLOY, the global leader  
in door opening solutions

**6000 SERIES**  
LOW ENERGY POWER OPERATOR

**FUNCTIONS**

- » Push and Go selector
  - › As the door is manually opened, the operator "senses" movement and opens door to the full-open position
- » Open/Close obstruction detection
  - › Open
    - › Door closes if it hits an obstruction while opening
  - › Close
    - › Door re-opens (once) if it hits an obstruction while closing – if the door hits the obstruction again, the door will rest against the obstruction until it is removed
- » Motor startup delay adjustment
  - › Delays operator opening
- » Vestibule delay adjustment
- » Hold open delay adjustment
- » Single Pole Double Throw (SPDT) relay output
  - › SPDT relay output time adjustment
  - › SPDT alarm output
- » Blow open for smoke ventilation
- » Presence detector input
- » Selector mode switch
  - › Off – Disables signal inputs except blow open
  - › On – Activates signal inputs
  - › Infinite Hold Open - Door will hold open at set position until power is turned off


**FEATURES**

- » Push or pull side mounting
- » Non-handed
- » Modular design for one person install
- » Full cover option on double/pair of doors
- » 1.3A onboard power supply
- » Activated by push button, hands-free, and RF devices
- » Infinite hold open
- » Maximum door size 4'0" x 8'0", 250 lbs
- » Operates as a mechanical surface closer when power is off
- » On board electronics collect usage and cycle count data to facilitate preventative maintenance/diagnostics
- » 2 year limited warranty

**ELECTRICAL DATA**

- » Power input 120 VAC, 60 Hz (+10%, -15%)
- » Current draw 0.9A (single), 1.8A (double)
- » Auxiliary output 24 VDC @ 1.3A
- » SPDT relay output for controlling electric strikes or electric locks not to exceed 1 amp @ 30 VDC

**CERTIFICATIONS**

- » ANSI/BHMA A156.19 certified 
- » ETL tested to UL / cUL standards for automatic doors used on fire and smoke barrier doors and CSA C22.2 No. 247 for operators and systems of doors
- » UL10C listed for positive pressure fire test
- » Comply with requirements for the Americans with Disabilities Act (A.D.A)
- » California State Fire Marshall Listing 3266-0944:0110
- » Manufactured in an ISO 9001 and ISO 14001 facility

**6000 SERIES**  
LOW ENERGY POWER OPERATOR

**APPLICATIONS**

**6011 Shown**

HINGE (PULL) SIDE OF DOOR  
RIGID ARM AND SLIDE TRACK



**6031 Shown**

STOP (PUSH) SIDE OF DOOR  
STANDARD-DUTY DOUBLE LEVER ARM



**D6011-36 Shown**

DOUBLE DOOR (PAIR)  
RIGID ARM AND SLIDE TRACK



**6061 Shown**

STOP (PUSH) SIDE OF DOOR  
HEAVY-DUTY DOUBLE LEVER ARM



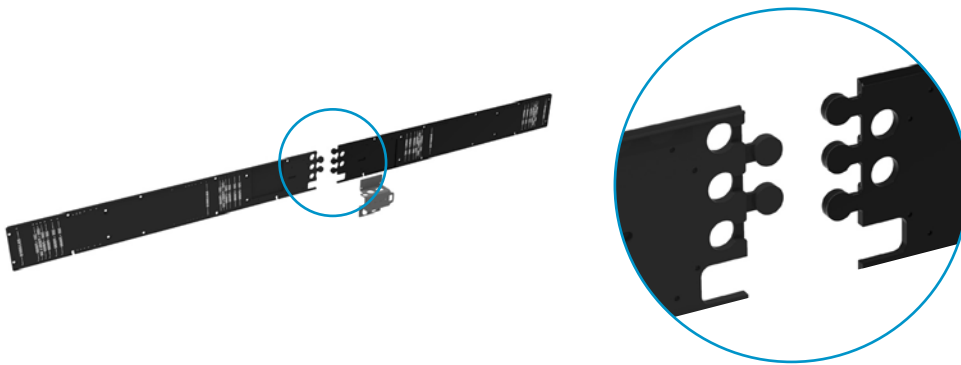
Model	Mounting		Arms			
	Pull Side	Push Side	Rigid Arm & Slide Track	Double Egress & Slide Track	Standard-Duty Double Lever	Heavy-Duty Double Lever
6011, D6011	•		•			
6051, D6051	•			•		
6021, D6021		•			•	
6031, D6031		•			•	
6061, D6061		•				•
6071, D6071		•				•

For application assistance, Norton offers complete services from specifying product to engineering a door system which includes riser and wiring diagrams. Consult Norton Technical Product Support for additional information.

# 6000 SERIES LOW ENERGY POWER OPERATOR

## OPERATOR DETAILS

Heavy Duty Back Plates (Double Door Shown)



Back plates interlock and attach with a conduit assembly to provide strength and durability

## Cover Union - Double and Single Doors



The 3-position switch (ON/OFF/HOLD OPEN) is easily accessible via a "door" on the cover union. The door is located in the middle for double doors and on the end for single doors.

## End Cap



If needed, spring adjustment is accessible through the door on the end cap. Door can be "locked" with a screw for security.

### TECHNICAL INFORMATION

Models	Minimum Frame Height	Minimum Top Rail (Door)	Minimum Door Width	Door Opening	Frame Reveal
6011, D6011	2" (51mm)	1-3/4" (44mm)	36"	85° to 110° (5° increments)	1/8" (3mm)
6051, D6051		2-3/8" (60mm)			1/8" to 3" (3 - 76mm)
6021, D6021	1-1/2" (38mm)	1-7/8" (48mm)		Up to 110°	2-3/4" to 6-7/8" (70 - 175mm)
6031, D6031				From 110° to 180°	
6061, D6061		2-3/16" (56mm)		85° to 110° (5° increments)	2-1/4" to 4-3/4" * (57 - 121mm)
6071, D6071					4-13/16" to 7-3/8" (122 to 187mm)

**Notes:**

- » Auxiliary stops are recommended for the models 6011 and 6051 and required for models 6021 and 6031.
- » Models 6061 and 6071 have a spring buffered stop in the arm shoe assembly.
- » Models 6011 and 6051 have a buffered stop assembly in the slide track.
- » Drop applications are needed if the required ceiling clearance is less than 5". Available for models 6021, 6031, 6061 and 6071. Suffix D to model number when ordering.

\*Reveals less than 2-1/4" (57mm) may be achieved by field cutting the adjusting rod.

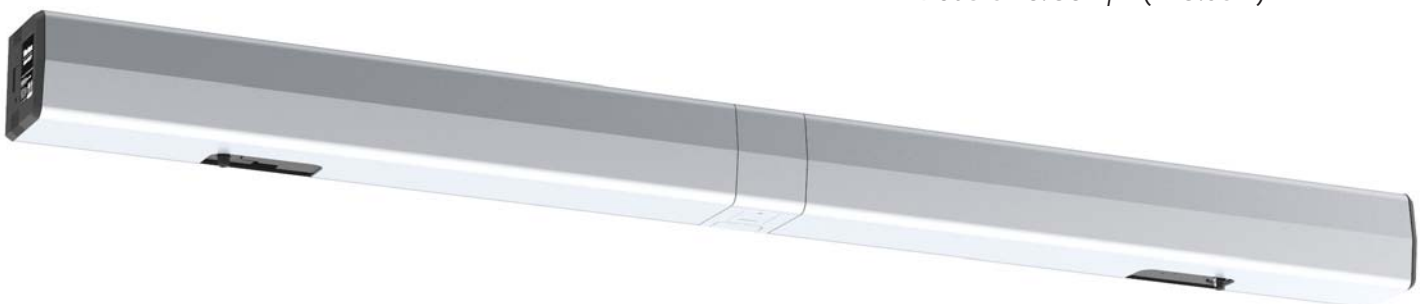
### COVER DIMENSIONS

**Single & Double Covers:**

Projection: 4-3/4" (121mm)  
Height: 5-3/16" (132mm)

**Overall Lengths:**

Single: 37-1/2" (95.3cm)  
Double-36: 74-1/4" (188.6cm)  
Double-42: 86-1/4" (219.1cm)  
Double-48: 98-1/2" (249.6cm)





### 6000 SERIES LOW ENERGY POWER OPERATOR

#### ACCESSORIES



501

502

#### Activating Door Switches

- » 4-1/2" W. x 4-1/2" H.
- » 15 amp @ 125 VAC
- » Flush mounted – hard wired
- » Fits single or 2 gang electrical box
- » **501** – Stainless steel with black letters
- » **502** – Blue powder coat with white letters
- » Specify #542 to order surface mount box for 501 or 502 switch



505, 531

507, 532



506, 533

534, 535

- » 6" W. x 6" H.
- » 9 volt battery
- » 15 amp @ 125 VAC
- » Flush mounted
- » Stainless steel with blue letters
- » **531, 532, 533** and **535** radio frequency (433MHz). Used with RF option and 539. Supplied with surface mount boxes.
- » **507, 505, 506** and **534** hard wired\*. Surface mounted boxes are not supplied. If required, specify:  
555 - 6" square surface mount box  
557 - 6" round surface mount box

\* Switches may also be installed with single or double gang electrical box using fasteners included.



503

- » 1-1/2" x 4-3/4" face plate
- » SPDT UL listed switch-mom.
- » 15 amp @ 125 VAC
- » Fits 1-3/4" frame
- » Stainless steel with blue letters
- » Specify #559 to order surface mount box for 503 switch



504

#### Vestibule Switches

- » 5" W. x 4-3/4" H.
- » 2 – SPDT UL listed switches-mom.
- » 15 amp @ 125 VAC
- » Fits 2-gang electrical box
- » Stainless steel with blue letters
- » Specify #542 to order surface mount box for 504 switch



700

#### Wave-to-Open Wall Switch

- » Single gang and double gang packaged together
- » Sensor requires movement for activation
- » Variable relay – hold time from 0 – 35 seconds
- » Range 0" to 4"
- » Dimensions:  
3" W x 4-3/4" H (single);  
4-1/2" W x 4-1/2" H (double)



(1 per switch)



(1 per switch)



(2 per operator)

#### 679 Signage Kit (supplied standard)

### ACCESSORIES



663\*

#### Motion Sensor

- » 4-3/4" x 3-3/16" x 2" projection
- » Unidirectional
- » Black cover
- » SPDT relay
- » Adjustable angle pattern
- » 24 VDC input
- » Must not be placed where motion of door can be sensed



500 & 530

#### Switch Post

- » 4" x 6" x 40" x 3/16" wall thickness
- » 9 volt battery
- » RF temperature range: -4° F to 122° F
- » 689 (aluminum) or 690 (dark bronze) finishes; specify when ordering
- » Standard formed plastic cap
- » Surface mounted (above ground)
- » 530 - radio frequency transmitter
- » 500 - hard wired switch
- » 530POST - post only; switch not included



585

#### Presence Detector

- » Diffused active infrared technology
- » 11.8" l x 1.9" h x 1.9" w
- » Black anodized aluminum
- » 9'x0" maximum mounting height
- » Supply voltage: 24VAC/DC



536

#### Transmitters

- » 2-3/8"w x 4-3/16"h x 15/16"d
- » Single channel



538

- » 2-3/8"w x 4-3/16"h x 15-16"d
- » Two channel



548

- » Converts existing hard wired push plates to work with RF receivers offered after June 2013
- » Single channel
- » 9 volt

#### Radio Frequency Receiver

- » 433 MHz



539

#### Low Profile Push Plate

- » 36" x 6" activation zone
- » 1" low profile depth
- » Stainless steel face plate
- » Adapts to either wireless or hardwired installations
- » 638 - Wireless
- » 639 - Hardwired



638, 639

\*Use of motion sensor must be approved by local authority having jurisdiction.

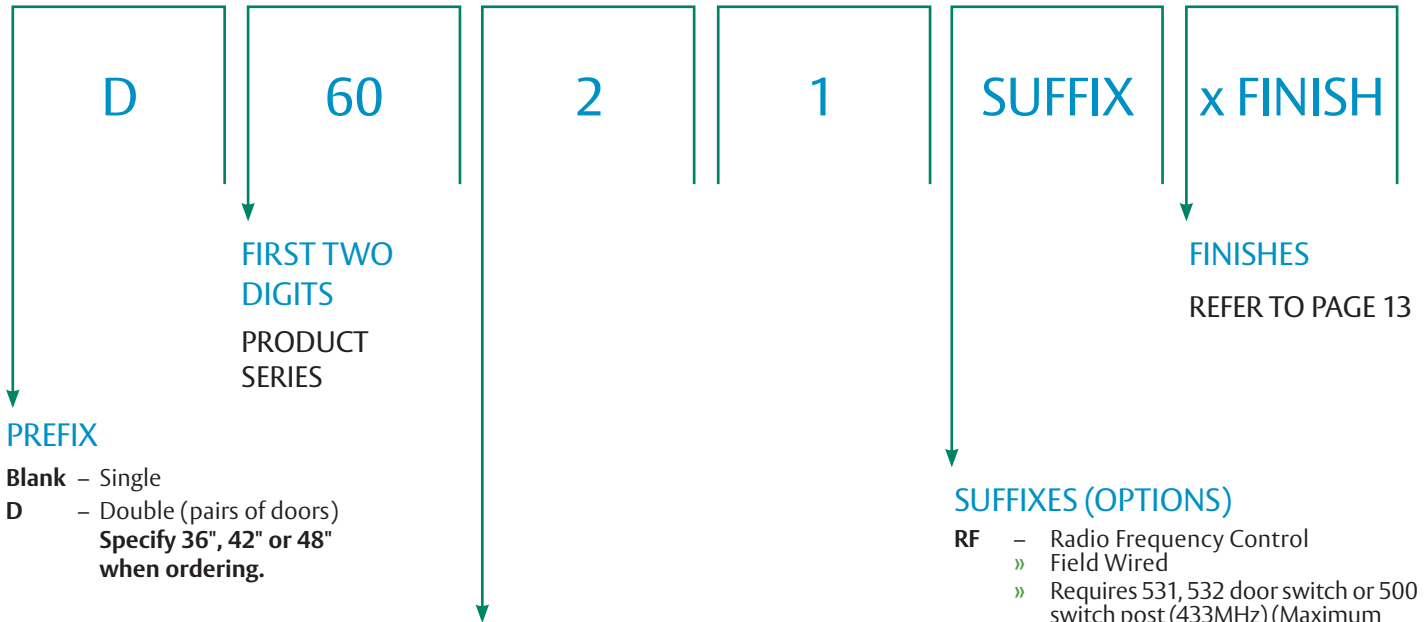
**6000 SERIES**  
LOW ENERGY POWER OPERATOR

**FINISHES**

Description	Specify Norton Designation (BHMA)	Complements the following finishes	Old Designation
Aluminum	689	628, 625, 629, 630, 651	AL
Statuary Bronze	690	640, 613	STAT
Dull Bronze	691	612, 637, 639	DB
Black	693	315	315
Medium Amber	694	312	312
Gold	696	605, 606, 632, 633	GB
Black Suede	BSP	—	—
White Suede	WSP	—	—



## HOW TO ORDER



### THIRD DIGIT

IDENTIFIES TYPE OF APPLICATION

#### HINGE (PULL) SIDE OF DOOR\*

- 1** – Rigid Arm & Slide Track 110° maximum door swing maximum reveal 1/8" (3mm)
- 5** – Double Egress Arm & Slide Track 110° maximum door swing for reveals 1/8" to 3" (3 to 76mm) (specify hand when ordering)

#### STOP (PUSH) SIDE OF DOOR

- 2** – Standard-Duty Double Lever Arm 110° maximum door swing. Reveals 2-3/4" to 6-7/8" (70 to 175mm).
- 3▲** – Standard-Duty Double Lever Arm 180° maximum door swing. Reveals 2-3/4" to 6-7/8" (70 to 175mm).
- 6♦** – Heavy-Duty Double Lever Arm 110° maximum door swing. Reveals 2-1/4" to 4-3/4" (57 to 121mm).
- 7** – Heavy-Duty Double Lever Arm 110° maximum door swing. Reveals 4-13/16" to 7-3/8" (122 to 187mm).

- ▲ Models will be power operated to 110° but can be manually opened to 180°
- ♦ Reveals less than 2-1/4" (57mm) may be achieved by field cutting the adjusting rod

\*Consult Technical Support Department when door is hung on offset pivots

### SUFFIXES (OPTIONS)

- RF** – Radio Frequency Control
  - » Field Wired
  - » Requires 531, 532 door switch or 500 switch post (433MHz) (Maximum codes: 100)
- D** – Drop application for less than 5" minimum ceiling clearance.
- DMY** – Dummy unit
  - » Double unit includes (1) operator and (1) door closer
  - » Single unit includes (1) door closer

### Ordering Examples:

6021RF x 689  
D6021-36 x 689  
D6021-36RF-D x 689

# Norton®

## ASSA ABLOY

ASSA ABLOY is the global leader in door opening solutions, dedicated to satisfying end-user needs for security, safety and convenience

Since 1880, Norton door controls have been an integral part of schools, hospitals and businesses around the globe. When you need products and people that perform at the highest level, rely on Norton – From Open to Close.

Norton Door Controls | [www.nortondoortcontrols.com](http://www.nortondoortcontrols.com)

3000 Highway 74 East | Monroe, NC 28112 | Tel: 1-877-974-2255 | Fax: 1-800-338-0965

ASSA ABLOY Door Security Solutions Canada | [www.assaabloydss.ca](http://www.assaabloydss.ca)

160 Four Valley Drive | Vaughan, Ontario, L4K 4T9 Canada | Tel: 1-800-461-3007 | Fax: 1-800-338-0965

Norton is a brand associated with ASSA ABLOY Accessories and Door Controls Group, Inc., an ASSA ABLOY Group company. Copyright © 2012-2019, ASSA ABLOY Accessories and Door Controls Group, Inc. All rights reserved. Reproduction in whole or in part without the express written permission of ASSA ABLOY Accessories and Door Controls Group, Inc. is prohibited.