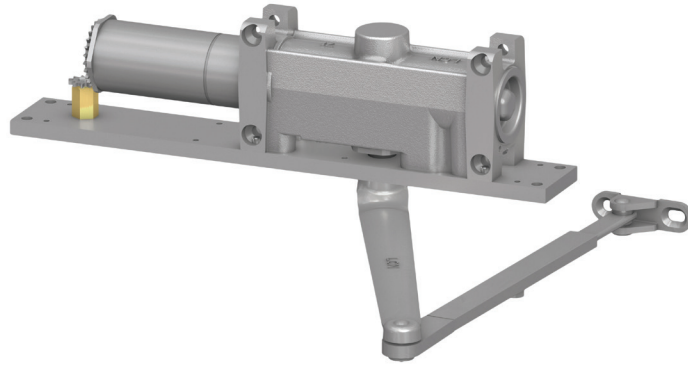


5010 Series



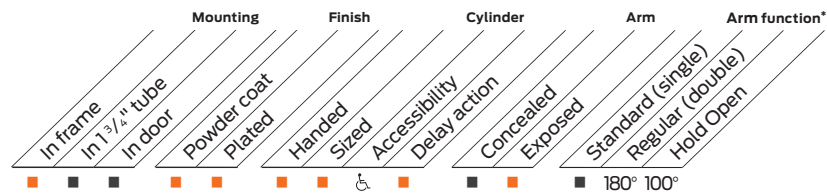
The concealed 5010 Series is a heavy duty closer designed for institutional, high traffic, or other applications exposed to weather or abuse. The double lever arm provides superior door control and a choice of finishes, cylinder functions, and arm functions that meet virtually all architectural requirements.

Features

Certifications	Grade 1 - ANSI A156.4, UL 10C, ADA, 100 hour salt spray, meets BAA - Buy American Act	Mounting	Concealed (in frame); aluminum frame requires 4" (102 mm) x 4" tube
Body construction	<ul style="list-style-type: none"> Cast iron body Full complement bearing 1 1/2" diameter piston 11/16" diameter double heat treated pinion journal 	Arms	Regular Arm
Fluid	All weather fluid	Finishes/colors/powder coat	<ul style="list-style-type: none"> 689 Aluminum 690 Statuary bronze 691 Light bronze 693 Black 695 Dark bronze 696 Brass Custom colors optional Optional SRI primer - powder coat only Optional plated finishes
Handing	Handed		
Size	Sized 1-6		
Warranty	15 years		
Fasteners	Wood Screws and Torx Security Screws (optional)		

Special templates

Customized installation templates or products may be available to solve non-standard applications. Contact LCN Product Support for assistance.



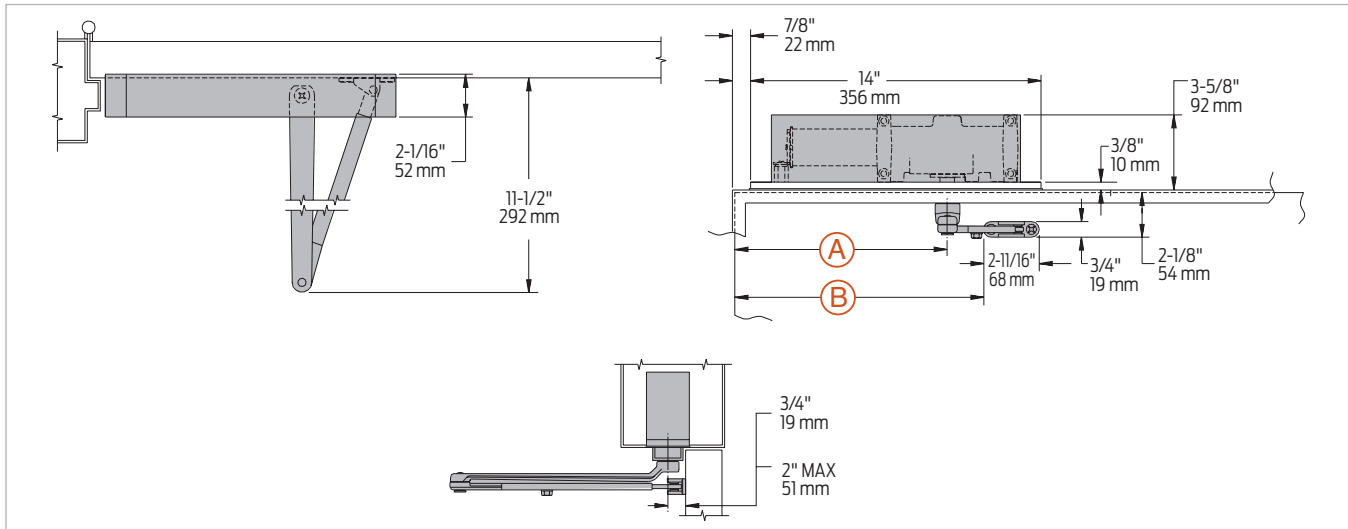
■ Available
■ Not available

♿ Closer available with less than 5.0 lbs. opening force on 36" door.

* Maximum opening/hold open point with standard template. See individual closer series for degrees of opening per installation.

Mounting details

Concealed mounting



Butt hinges	Should not exceed 6" (152 mm) in width
Auxiliary stop	Recommended at hold open point or where a door cannot swing 180°
Top rail	Minimum 2 1/8" (54 mm) required
Delay action	<ul style="list-style-type: none"> ▪ Add suffix "CYLDEL" to selected cylinder (not available with 5016 cylinder) ▪ Delays closing from maximum opening to approximately 70° ▪ Delay time adjustable up to approximately 1 minute
Maximum opening	<p>Butt hung doors can be templated for:</p> <p>100°: A = 10 3/16" (259 mm) B = 12" (305 mm)</p> <p>180°: A = 5 1/2" (140 mm) B = 7 5/16" (186 mm) trim permitting</p> <ul style="list-style-type: none"> ▪ Hold open points up to 100° only with Hold Open Arm (H) ▪ Center pivot mounting restricts opening to 140° ▪ Offset pivot mounting allows up to 180°, trim permitting

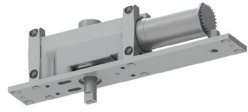
Notes:

- For interior or exterior doors
- Single acting cylinder in head frame
- Exposed arm on hinge side of door

5010 Series

Accessories

Cylinders



**5011(2)(3)(4)(5)(6)-3071
Cast iron cylinder assembly
with mounting plate (CYL)**

- Handed
- With mounting plate
- Standard

Arms



**5010-3077
Regular Arm (REGARM)**

- Non-handed



**5010-3049
Hold Open Arm (H)**

- Handed
- Provides hold open function for 100° template, adjustment at elbow
- Optional