

# 4630 Series

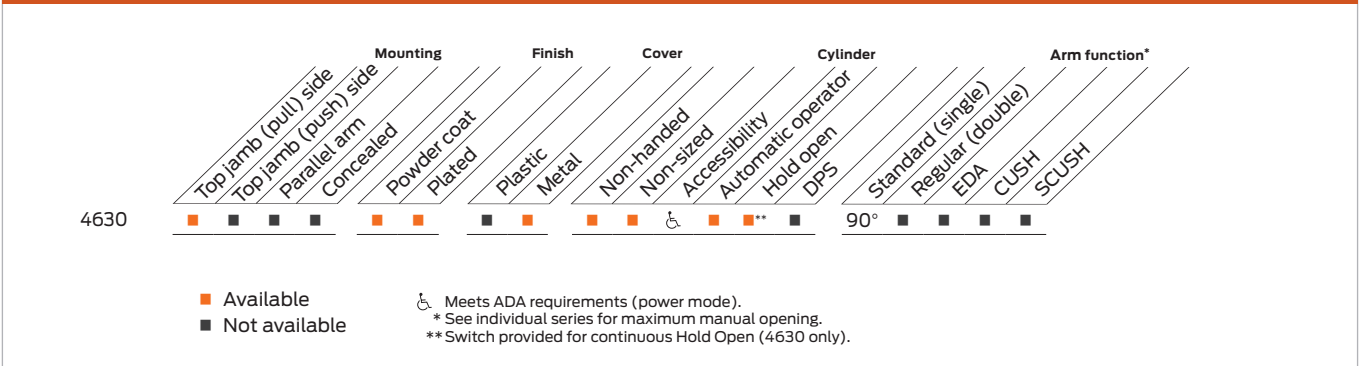


The 4630 auto equalizer is LCN's smart and reliable electrically powered low-energy automatic operator. It provides easy access for people with disabilities, or the elderly. Designed primarily for manual opening applications that occasionally required automatic opening.

## Features

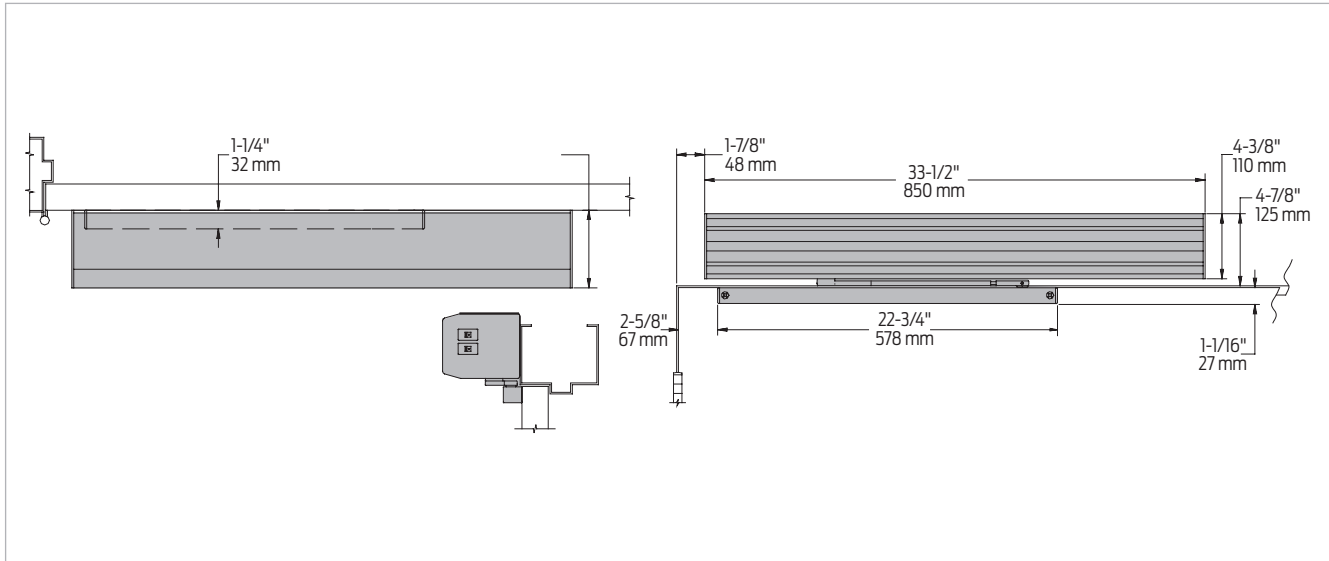
|                          |   |                                     |   |
|--------------------------|---|-------------------------------------|---|
| <b>Certifications</b>    | Grade 1 - ANSI A117.1, A156.19, UL 10C, UL 325/228, ADA, 100 Hour Salt Spray, Meets BAA - Buy American Act  | <b>Cover</b>                        | Metal Cover (MC)  |
| <b>Body construction</b> | <ul style="list-style-type: none"> <li>Cast iron body</li> <li>Full complement bearing</li> <li>1 1/2" diameter piston</li> <li>3/4" diameter double heat treated pinion journal</li> </ul> | <b>Fasteners</b>                    | Wood and Machine Screws (WMS)   |
| <b>Fluid</b>             | All weather fluid   | <b>Mounting</b>                     | Top jamb (pull side)  |
| <b>Handing</b>           | Non-handed  | <b>Arms</b>                         | Standard single lever arm and track   |
| <b>Size</b>              | Adjustable spring size 1-4  | <b>Finishes/colors/ powder coat</b> | <ul style="list-style-type: none"> <li>689 Aluminum</li> <li>690 Statuary Bronze</li> <li>691 Light Bronze</li> <li>693 Black</li> <li>695 Dark Bronze</li> <li>696 Brass</li> <li>Custom colors optional</li> <li>Optional SRI primer - powder coat only</li> <li>Optional plated finishes*</li> </ul> |
| <b>Warranty</b>          | 2 years   |                                     | *End caps are black   |

**Special templates** | Customized installation templates or products may be available to solve non-standard applications. Contact LCN Product Support for assistance.



## Mounting details

### Top jamb (pull side) mounting



|                        |   |
|------------------------|---|
| Butt hinges            | Should not exceed 5" (127 mm) in width  |
| Auxiliary stop         | Recommended   |
| Reveal                 | Should not exceed 1/8" (3 mm)   |
| Top rail               | Minimum 1 1/8" (29 mm)  |
| Head frame             | Minimum 2" (51 mm)  |
| Opening time and force | <ul style="list-style-type: none"> <li>Variable by adjustments to the electronic control module located on the operator assembly</li> <li>Maximum hold open time adjustable up to approximately five minutes</li> </ul>   |
| System diagram         | See page 33 for typical system wiring and pages 34-35 for electrical data   |
| Maximum opening        | <ul style="list-style-type: none"> <li>Templating allows 90° power opening and 170° manual opening</li> <li>Please note that many track style door closers are capable of allowing 180° of door swing</li> <li>Track style closers are at their weakest closing force at 180°</li> <li>Consult factory for applications where exterior or large/heavy door must swing 180°</li> </ul> |

**Notes:**

- Actuators are sold separately, see pages 100-117
- Comes with a digital control box utilizing a 4040XP heavy duty door closer with on-board diagnostics and power supply
- Has a factory default memory that include "No Destruct" drive system
- Guard rails or safety mats not required
- 4630 has easily accessible switches to provide on/off and continuous hold open functions
- CS options provides concealed on/off power switch
- Control module provides timing and sequential door functions, electric strike controls and adjustments for opening speed and force

# Accessories

## Cylinders



**4631-3971  
Cast Iron Cylinder  
Assembly (CYL)**

- Non-handed
- Standard



**4631-3071  
Cast Iron Cylinder Assembly  
(CYL)**

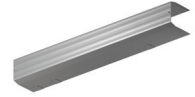
- Non-handed
- Mounting plate
- Includes 4630-3454 Motor Clutch, 4630-3180 I/O Board Assembly and 4630-3462 Controller
- Standard



**4631-3071CS  
Cast Iron Cylinder Assembly (CYL)**

- Non-handed
- Mounting plate
- Includes 4630-3454 Motor Clutch, 4630-3180 I/O Board Assembly and 4630-3462 Controller
- Same as a 4630-3071 assembly except on/ off switch is concealed in endcap and no hold open switch is included (Separate key switches suggested)
- Optional

## Covers



**4630-72MC  
Metal Cover (MC)**

- Non-handed
- Standard

## Arm



**4630-3077T  
Standard Arm (STDTRKARM)**

- Non-handed
- Track roller not included with arm

## Tracks



**4630-3038  
Standard Track (STDTRK)**

- Non-handed
- Standard

## Installation accessories



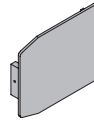
**4630-3034  
Track roller**

- Quiet low friction roller assembly
- Shoulder dimension "X" = 1/8" (3mm)



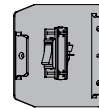
**4630-334  
Switch End Cap**

- End cap (black powder coat finish only) with cut outs for installing on/off and hold open switches



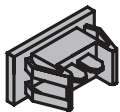
**4630-334-2  
Blank End Cap**

- Black powder coat only



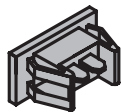
**4630-334CS  
Switch End Cap**

- End cap and switch (black powder coat only) for concealed switch option



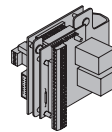
**4630-3179-1  
On/Off Switch Assembly**

- Black rocker switch (plugs into high voltage PC board)



**4630-3179-2  
Hold Open Switch Assembly**

- Black rocker switch
- Field wired to low voltage PC board



**4630-3180  
PC Board Assembly**

- High and low voltage PC boards connected to mounting bracket



**4630-3454  
Motor/Clutch Assembly**

- A geared assembly in an LCN automatic operator that incorporates a "no destruct" feature



**4630-3462  
Control Box Assembly**

- Digital controller with built-in 12/24 VDC power supply
- Programming and timing functions are adjusted on controller



**4630-3498-1  
Ribbon Cable Connector**

- 16 wire ribbon cable connecting PC board assembly to controller



**4630-3498-2  
AC Power Cable**

- 2 wire cable to connect 120 VAC from PC board assembly to controller

Introduction  
 Product selection guide  
 Pneumatic systems  
 Auto equalizers  
 2610/4810/4820/4840/7900 Series  
 Electrohydraulic systems  
 Auto equalizers  
 4630/4640 Series  
 Electromechanical systems  
 Benchmark  
 9130/9140/9150 Series  
 Electromechanical systems  
 Senior Swing  
 2810/2850/2860/9530/9540/9550/9560 Series  
 Actuators and accessories