

# 4310HSA Series

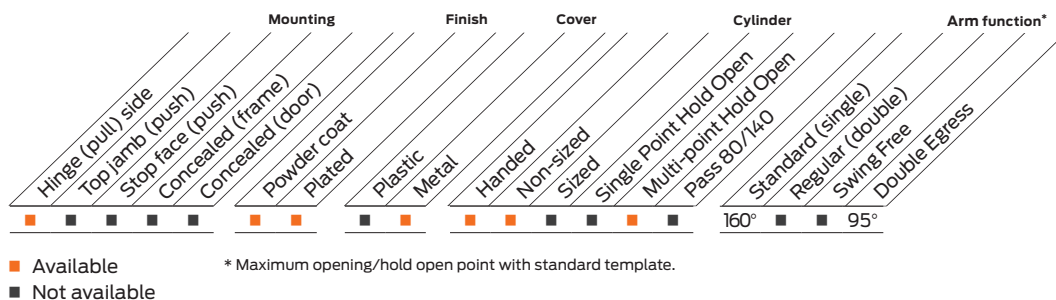


The 4310HSA SENTRONIC® is an electrically controlled closer/holder designed to provide easy passage for groups of pedestrians through high traffic doors. Pedestrians, moving through the doorway, trigger the built-in scanner. When the door is opened to 80° or more, the door is electrically held open to minimize wear and tear on applied door hardware. After the last pedestrian in a group passes through the doorway, the system timer releases the hold open, closing the door.

## Features

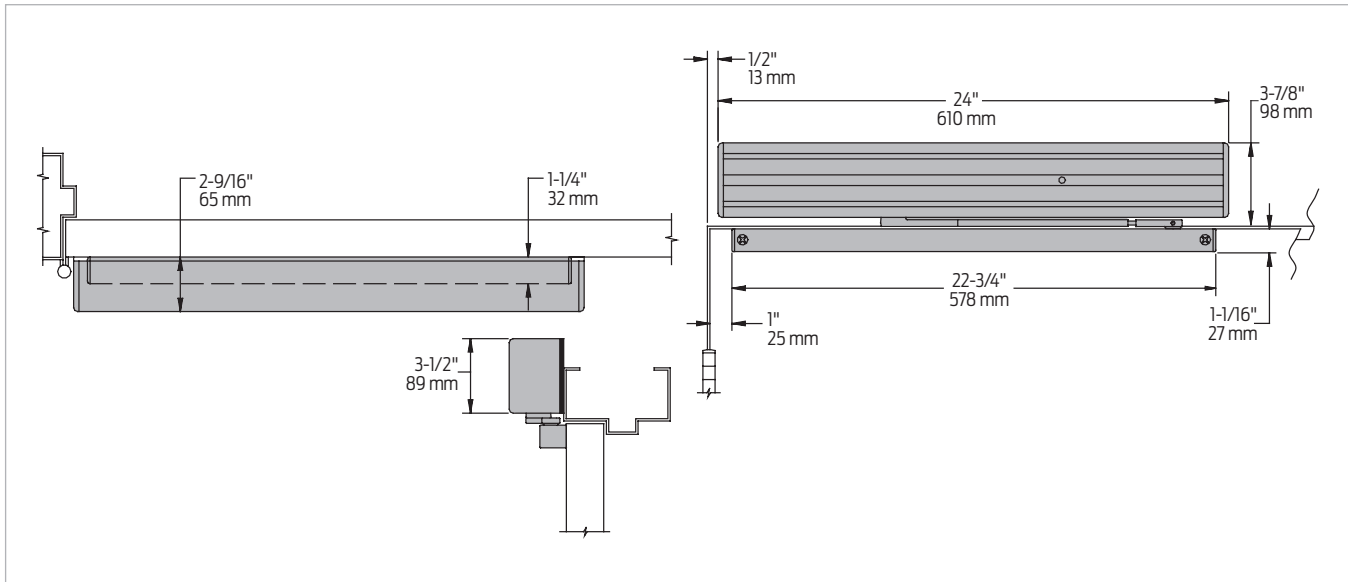
<b>Certifications</b>	Grade 1 - ANSI A156.15, NFPA 101, UL 10C, 100 Hour Salt Spray, Meets BAA - Buy American Act	<b>Cover</b>	Metal, Standard
<b>Body construction</b>	<ul style="list-style-type: none"> <li>Cast iron body</li> <li>Full complement bearing</li> <li>1 1/2" diameter piston</li> <li>1 1/16" diameter double heat treated pinion journal</li> </ul>	<b>Arms</b>	<ul style="list-style-type: none"> <li>Standard Arm (with track)</li> <li>Double Egress Arm, optional</li> </ul>
<b>Fluid</b>	All weather fluid	<b>Finishes/colors/ powder coat</b>	<ul style="list-style-type: none"> <li>689 Aluminum paint</li> <li>690 Statuary Bronze paint</li> <li>691 Light Bronze paint</li> <li>693 Black paint</li> <li>695 Dark Bronze paint</li> <li>696 Brass paint</li> <li>Custom colors optional</li> </ul>
<b>Handing</b>	Handed		<ul style="list-style-type: none"> <li>Optional SRI primer - powder coat only</li> <li>Optional plated finishes</li> </ul>
<b>Size</b>	Field adjustable, shipped at size 3	<b>Wiring</b>	<ul style="list-style-type: none"> <li>Concealed or surface wiring</li> <li>24V AC/DC input only</li> <li>120V requires 4310HSA-3210 transformer</li> <li>HSA features a scanner activated hold open function, fixed 15 seconds or 30 seconds</li> </ul>
<b>Warranty</b>	2 years		
<b>Fasteners</b>	Wood and Machine Screws (WMS)		
<b>Mounting</b>	Hinge (pull side), interior doors		

**Special templates** | Customized installation templates or products may be available to solve non-standard applications. Contact LCN Product Support for assistance.



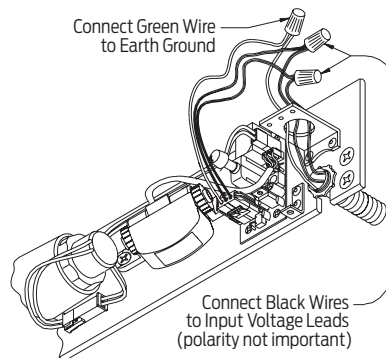
## Mounting details

### Hinge (pull side) mounting



Butt hinges	Should not exceed 4 1/2" (114 mm) in width
Reveal	<ul style="list-style-type: none"> <li>Should not exceed 1/8" (3 mm) for Standard Arm</li> <li>Should not exceed 2 1/16" (68 mm) for Double Egress Arm</li> </ul>
Top rail	1 1/16" (27 mm) minimum
Head frame	Requires 2" (51 mm) minimum
Clearance	1 1/4" (32 mm) minimum
Maximum opening	<ul style="list-style-type: none"> <li>Templating allows 180°</li> <li>Optional Double Egress Arm limited to 95°</li> <li>Infinite hold open points from 80° up to 160°</li> </ul>
Options	120 volt input requires 4310HSA-3210 transformer to change 120V AC to 24V AC

### HSA wiring diagram



Note: If used on fire door, must be wired into fire alarm system.

#### Notes:

- Functions as full rack and pinion door closer when current is interrupted or continuous hold open is not engaged
- Built-in "On/Off" switch provides continuous hold open function

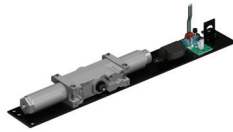
## Accessories

### Cylinders



**4311HSA-3971**  
Cast iron cylinder assembly (CYL)

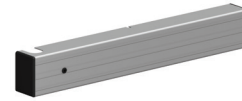
- Handed
- Cast iron
- 24V AC/DC input only for holding solenoid
- Standard



**4311HSA-3071**  
Cast iron cylinder assembly (CYL)

- Handed
- Includes scanner module and system timer module
- "On/Off" switch assembly provides continuous hold open function
- 24V AC/DC input only for holding solenoid and electronics modules
- Standard

### Cover



**4310HSA-72MC**  
Metal Cover (MC)

- Handed
- Standard

### Arms



**4310HSA-3077T**  
Standard Arm (STDTRKARM)

- Handed



**4310HSA-3077DE**  
Double Egress Arm (DE)

- Handed
- For double egress doors and frames
- 2 11/16" (67 mm) maximum reveal
- Optional

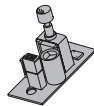
### Track



**4310HSA-3038**  
Track

- Non-handed
- Standard

### Switch



**4310HSA-3448**  
Switch Assembly

- Provides continuous hold open function
- Available in 24V only

### Scanner



**4310HSA-3428**  
Scanner Module

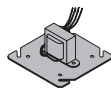
- Includes wire harness to connect scanner module to the switch assembly

### Installation accessories



**4310HSA-3034**  
Track Roller

- Quiet, low friction roller assembly
- Shoulder dimension "X" = 1/8" (3 mm)



**4310HSA-3210**  
Transformer

- Reduces line voltage from 120V to 24V AC
- Mounted on plate for 4" (102 mm) x 4" x 2 1/8" (54 mm) junction box (by others)