

# 4210T Series



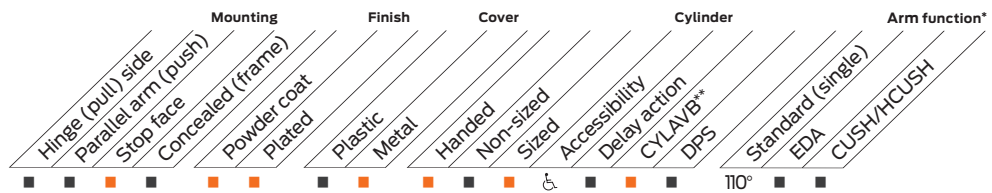
The 4210T Smoothee Series is a heavy duty, high security track closer with special components to minimize tampering and vandalism. Forged steel arms and heavy gauge metal security covers are designed for correctional, vandal prone, institutional and other high traffic interior applications. A choice of finishes and cylinder functions meet correctional and vandal resistant requirements.

## Features

<b>Certifications</b>	Grade 1 - ANSI A156.4, UL 10C, ADA, 100 Hour Salt Spray, Meets BAA - Buy American Act <small>Note: 4211 cylinder meets ADA.</small>	<b>Cover</b>	Metal Cover (MC)
<b>Body construction</b>	<ul style="list-style-type: none"> <li>Cast iron body</li> <li>Full complement bearing</li> <li>1 1/2" Diameter piston</li> <li>1/16" diameter double heat treated pinion journal</li> </ul>	<b>Fasteners</b>	Torx Machine Screws (TORX)
<b>Fluid</b>	All weather fluid	<b>Mounting</b>	Stop face (push side)
<b>Handing</b>	Handed	<b>Arms</b>	Security arm, security track with roller
<b>Size</b>	Sized 1, 3 or 4; Interior	<b>Finishes/colors/powder coat</b>	<ul style="list-style-type: none"> <li>689 Aluminum</li> <li>690 Statuary Bronze</li> <li>691 Light Bronze</li> <li>693 Black</li> <li>695 Dark Bronze</li> <li>696 Brass</li> <li>Custom colors optional</li> <li>Optional SRI primer - powder coat only</li> <li>Optional plated finishes</li> </ul>
<b>Warranty</b>	15 years		

### Special templates

Customized installation templates or products may be available to solve non-standard applications. Contact LCN Product Support for assistance.

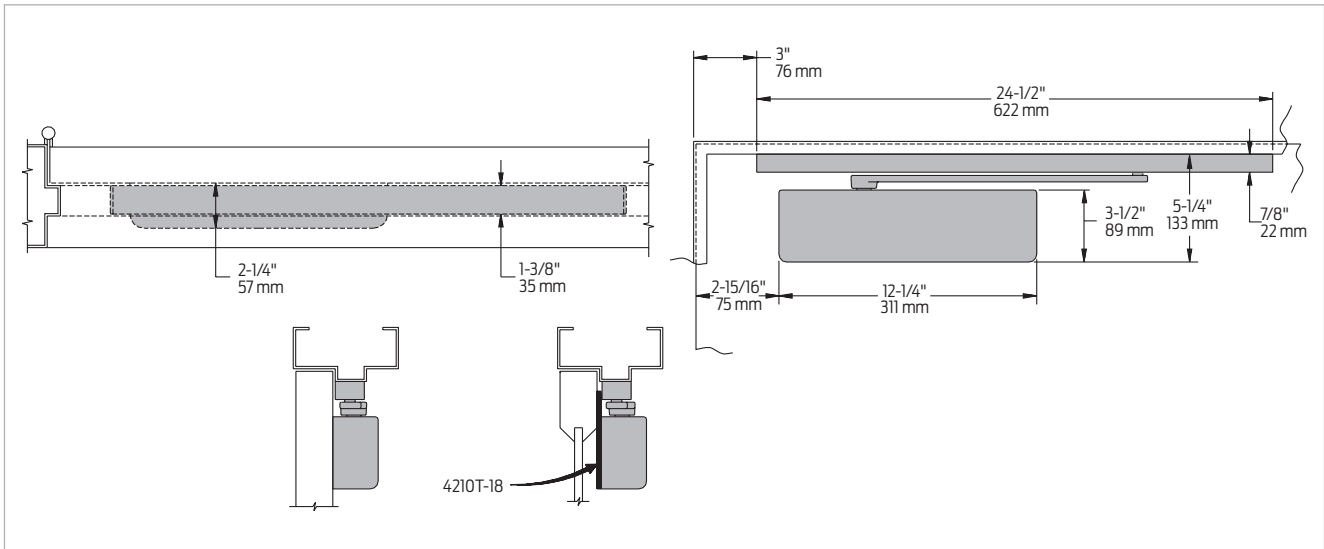


■ Available  
■ Not available

Closer available with less than 5.0 lbs. opening force on 36" door.  
 \* Maximum opening with standard template.  
 \*\* Advanced Variable Backcheck.

## Mounting details

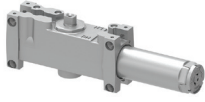
### Stop face (push side) mounting



Butt hinges	Should not exceed 5" (127 mm) in width
Auxiliary stop	Recommended where a door cannot swing 180°
Clearance	2 1/4" (57 mm) from door
Top rail	<ul style="list-style-type: none"> <li>Less than 5 1/4" (133 mm) measured from stop, requires plate 4210T-18</li> <li>Plate requires 2 1/4" (57mm) minimum measured from the stop</li> </ul>
Stop width	Minimum 1 3/8" (35 mm)
Advanced Variable Back Check	<ul style="list-style-type: none"> <li>Cylinder starts back check at approximately 45° instead of the normal 75°</li> <li>Add suffix "CYLAVB" to selected cylinder</li> </ul>
Maximum opening	Templating allows 110°
Options	Advanced Variable Back Check Cylinder (CYLAVB)

## Accessories

### Cylinders



**4211(3)(4)T-3071  
Cast iron cylinder  
assembly (CYL)**

- Handed
- Cast iron
- Standard

### Covers



**4210T-72MC  
Metal Cover (MC)**

- Handed
- Four point torx mounting for extra security
- Closer adjustments not accessible with cover installed

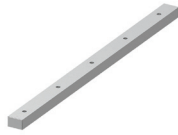
### Arms



**4210T-3077T  
Standard Security Arm  
(STDTRKSECARM)**

- Handed
- Solid forged steel, large cross section arm
- Special threaded attachment of track roller for extra security
- Double slab arm/ pinion attachment for maximum strength
- Can only be used with high security track roller, 4210T-3034

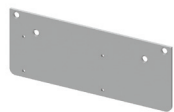
### Tracks



**4210T-3038  
Standard Security Track  
(STDSECTRK)**

- Non-handed
- Designed to eject foreign objects placed in track during either opening or closing motion
- Requires track roller, 4210T-3034

### Installation accessories



**4210T-18  
Plate**

- Required where top rail, when measured from the stop, is less than 5 1/4" (133 mm)
- Requires 2 1/4" (57 mm) minimum top rail measured from the stop



**4210T-3034  
Security Track Roller**

- Low friction track roller threads into 4210T-3077 arm for extra strength and security
- Can not be removed without disconnecting arm from closer