

# 4110 Series



The 4110 is LCN's best performing heavy duty closer with an adjustable spring and possible hold open point beyond 140 degrees, meeting ADA requirements. Backed by a 30 year warranty, the cast iron body and all weather fluid offer versatility in high traffic applications.

## Features

<b>Certifications</b>	Grade 1 - ANSI A156.4, UL 10C, ADA, 100 hour salt spray, meets BAA - Buy American Act	<b>Cover</b>	<ul style="list-style-type: none"> <li>Plastic Cover (PC), standard</li> <li>Metal Cover (MC), optional</li> </ul>
<b>Body construction</b>	<ul style="list-style-type: none"> <li>Cast iron body</li> <li>Full complement bearing</li> <li>1 1/2" diameter piston</li> <li>1/16" diameter double heat treated pinion journal</li> </ul>	<b>Fasteners</b>	Self Reaming and Tapping Screws (SRT)
<b>Fluid</b>	All weather fluid	<b>Mounting</b>	Parallel arm (push side)
<b>Handing</b>	Handed	<b>Arms</b>	Extra-duty arm
<b>Templating</b>	Peel-n-Stick templates - 2 1/2" x 6" mounting hole pattern	<b>Finishes/colors/ powder coat</b>	<ul style="list-style-type: none"> <li>622 Matte black</li> <li>689 Aluminum</li> <li>690 Statuary bronze</li> <li>691 Light bronze</li> <li>693 Black</li> <li>695 Dark bronze</li> <li>696 Brass</li> <li>Custom colors optional</li> </ul>
<b>Size</b>	Adjustable spring size 1-5, or sized 6, includes LCN Green Dial		<ul style="list-style-type: none"> <li>Optional SRI primer - powder coat only</li> <li>Optional plated finishes</li> </ul>
<b>Warranty</b>	30 years		

### Special templates

Customized installation templates or products may be available to solve non-standard applications. Contact LCN Product Support for assistance.

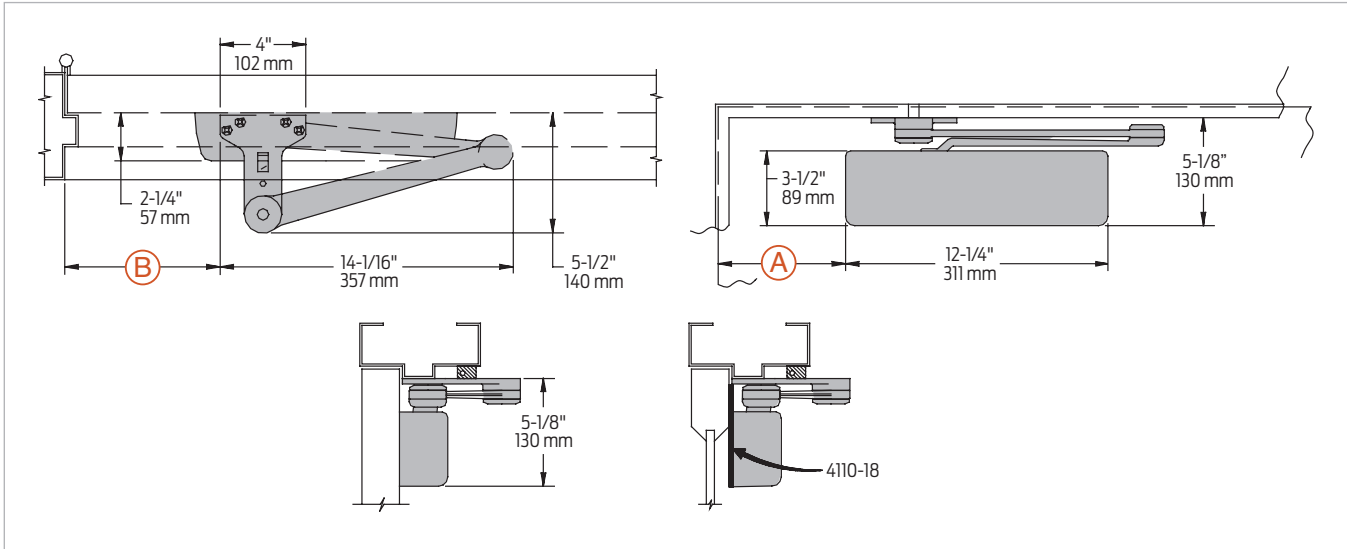
Mounting	Finish	Cover	Cylinder	Arm function*
Hinge (pull) side	Plastic	Non-handed	Regular (double)	180°
Top jamb (pull)	Metal	Non-sized	Standard (single)	180°
Top jamb (push)	Powder coat	Accessibility	Hold Open	110°
Parallel arm	Plated	Delay Action**	Fusible Link	110°
Stop face		CYLAVB**	EDAH/HCUSH	
			SCUSH/SHCUSH	
			Double Egress	

■ Available      Closer available with less than 5.0 lbs. opening force on 36" door.  
■ Not available      \* Maximum opening/hold open point with standard template.  
 \*\* Advanced Variable Back Check.  
 \*\*\* Delay feature incorporates standard 4040 cylinder (not XP).

Introduction  
 Product selection guide  
 4010/4010T Series  
 4020/4020T Series  
 4030/4030T Series  
 4040XP/4040XPT Series  
 4050A/4050AT Series  
 4110/4110T Series  
 4000T Series

## Mounting details

### Parallel arm (push) side mounting



Butt hinges	Should not exceed 5" (127 mm) in width	
Auxiliary stop	Recommended at hold open point, where a door cannot swing 180°, or where Cush-n-Stop Arm is not used	
Clearance	EDA, or CUSH shoe is 5 1/2" (140 mm) from door face	
Top rail	<ul style="list-style-type: none"> <li>Less than 5 1/8" (130 mm) measured from stop requires plate, 4110-18</li> <li>Plate requires 2" (51 mm) minimum measured from the stop</li> </ul>	
Stop width	Minimum 1" (25 mm)	
Head frame	Flush or rabbeted requires CUSH flush panel adapter, 4110-419	
Reveal	Less than 2 3/4" (70 mm), use CUSH shoe support, 4110-30 with CUSH arms	
Blade stop spacer	4110-61 required to clear 1/2" (13 mm) blade stop	
Cush arm	Requires CUSH shoe support, 4110-30 for fifth screw anchorage where reveal is less than 3 1/16" (78 mm)	
Delay action	<ul style="list-style-type: none"> <li>Add suffix "CYLDEL" to selected cylinder</li> <li>Not available with 4116 cylinder; delays closing from maximum opening to approximately 70°</li> <li>Delay time adjustable up to approximately 1 minute</li> </ul>	
Advanced Variable Back Check	<ul style="list-style-type: none"> <li>Cylinder starts back check at approximately 45° instead of the normal 75°</li> <li>Add suffix "CYLAVB" to selected cylinder</li> </ul>	
Maximum opening	EDA or Fusible Link Arm can be templated for:	CUSH Arm can be templated for maximum opening at:
	100° A = 5 15/16" (151 mm) B = 7 1/4" (184 mm)	85° A = 8 5/16" (211 mm) B = 9 5/8" (244 mm)
	140° A = 4 7/16" (113 mm) B = 5 3/4" (146 mm)	90° A = 7 11/16" (195 mm) B = 9" (229 mm)
	or 180° A = 2 15/16" (75 mm) B = 2 15/16" (75 mm)	or 110° A = 5 9/16" (141 mm) B = 6 7/8" (175 mm)
	<ul style="list-style-type: none"> <li>Hold open points up to maximum opening with HEDA or Fusible Link Arm</li> </ul>	<ul style="list-style-type: none"> <li>Hold open point at maximum opening with HCUSH Arm</li> <li>SCUSH hold open points are approximately 5° less than templated stop point</li> </ul>

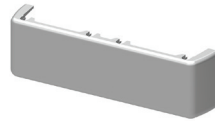
## Accessories

### Cylinders

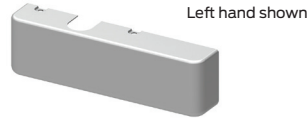


- 4111(6)-3071**  
**Cast iron cylinder assembly (CYL)**
- Handed
  - Standard

### Covers



- 4110-72**  
**Plastic Cover (PC)**
- Non-handed
  - Standard



- 4110-72MC**  
**Metal Cover (MC)**
- Handed
  - Required for plated finishes and custom powder coat finishes
  - Optional

### Arms



- 4110-3049EDA**  
**Hold Open Arm (H)**
- Handed
  - Optional
  - Provides hold open function, adjustable at shoe



- 4110-3049FL**  
**Fusible Link Arm (FL)**
- Handed
  - Releases hold-open function adjustable at shoe when exposed to temperatures above 165° F
  - Optional

Note: Check local codes before specifying FL arms.  
 NOT A life safety product!



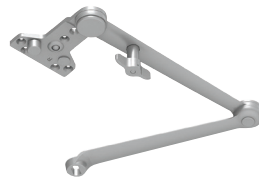
- 4110-3077CNS**  
**Cush-n-Stop Arm (CUSH)**
- Non-handed
  - Features solid forged steel main arm and forearm with built-in stop in soffit shoe



- 4110-3077EDA**  
**Extra Duty Arm (EDA)**
- Non-handed
  - Features forged, solid steel main and forearm for potentially abusive installations



- 4110-3077EDA/62G**  
**Extra Duty Arm (EDA)**
- Non-handed
  - Features forged, solid steel main and forearm for potentially abusive installations
  - Optional 4110-62G thick hub shoe for blade stop clearance



- 4110-3049CNS**  
**Hold Open Cush-n-Stop Arm (HCUSH)**
- Non-handed
  - Provides hold open function with templated stop/hold open points
  - Handle controls hold open function



- 4110-3077SCNS**  
**Spring Cush-n-Stop Arm (SCUSH)**
- Non-handed
  - For abusive applications features solid forged steel main arm and forearm with spring loaded stop in the soffit shoe
  - Optional



- 4110-3049SCNS**  
**Spring Hold open Cush-n-Stop Arm (SHCUSH)**
- Non-handed
  - For abusive applications features solid forged steel main arm and forearm with spring loaded stop in the soffit shoe
  - Handle controls hold open function
  - Optional

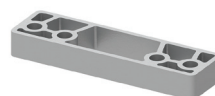
### Installation accessories



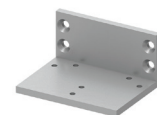
- 4110-18**  
**Plate**
- Required for push side mount where top rail is less than 5 1/8" (130 mm), measured from the stop
  - Requires minimum 2" (51 mm) minimum top rail



- 4110-30**  
**CUSH shoe support**
- Provides anchorage for fifth screw used with CUSH arm, where reveal is less than 3 1/16" (78 mm)



- 4110-61**  
**Blade stop spacer**
- Lowers parallel arm shoe to clear 1/2" (13 mm) blade stop



- 4110-419**  
**PA flush panel adapter**
- Provides horizontal mounting surface for CUSH shoe on single rabbeted or flush frame