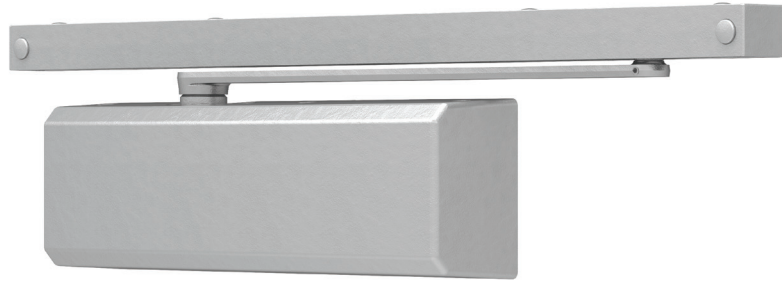


4050AT Series



The 4050AT cast aluminum heavy duty track closer is designed for rugged high frequency traffic areas. Ideal for commercial building applications and competitive specification situations that demand a combination of quality, reliability and value.

Features

Certifications	Grade 1 - ANSI A156.4, UL 10C, ADA, 100 hour salt spray, meets BAA - Buy American Act	Cover	<ul style="list-style-type: none"> Plastic Cover (PC), standard Metal Cover (MC), optional
Body construction	<ul style="list-style-type: none"> Cast aluminum body Full complement bearing 1 1/2" diameter piston 3/8" diameter double heat treated pinion journal 	Fasteners	Self Reaming and Tapping Screws (SRT)
Fluid	All weather fluid	Mounting	Pull side on door, pull side top jamb, push side on door
Handing	Non-handed	Arms	Standard arm and track with roller
Size	Adjustable spring size 1-4	Finishes/colors/ powder coat	<ul style="list-style-type: none"> 622 Matte black 689 Aluminum 690 Statuary bronze 691 Light bronze 693 Black 695 Dark bronze 696 Brass Custom colors optional Optional SRI primer - powder coat only
Warranty	25 years		

Special templates | Customized installation templates or products may be available to solve non-standard applications. Contact LCN Product Support for assistance.

Mounting	Finish	Cover	Cylinder	Arm function*
<ul style="list-style-type: none"> Hinge (pull) side Top jamb (pull) Top jamb (push) Parallel arm Stop face 	<ul style="list-style-type: none"> Powder coat Plated Plastic Metal 	<ul style="list-style-type: none"> Non-handed Non-sized Accessibility Delay Action*** CYLAVB** 	<ul style="list-style-type: none"> Regular (double) Standard (single) Hold Open Fusible Link EDA/HEDA CUSH/HCUSH SCUSH/SHCUSH Double Egress 	<ul style="list-style-type: none"> 180° 180° 95°

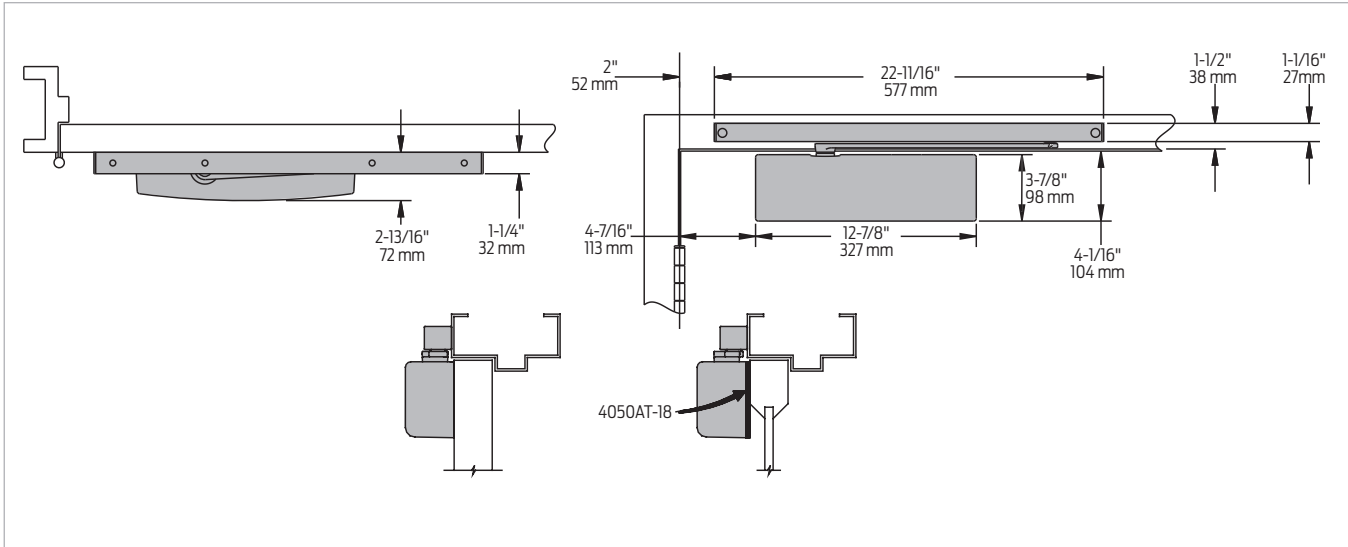
■ Available
■ Not available

♿ Closer available with less than 5.0 lbs. opening force on 36" door.
 * Maximum opening/hold open point with standard template.
 ** Advanced Variable Back Check.
 *** Delay feature incorporates standard 4040 cylinder (not XP).

Introduction
 Product selection guide
 4010/4010T Series
 4020/4020T Series
 4030/4030T Series
 4040XP/4040XPT Series
 4050A/4050AT Series
 4110/4110T Series
 4000T Series

Mounting details

Hinge (pull) side mounting

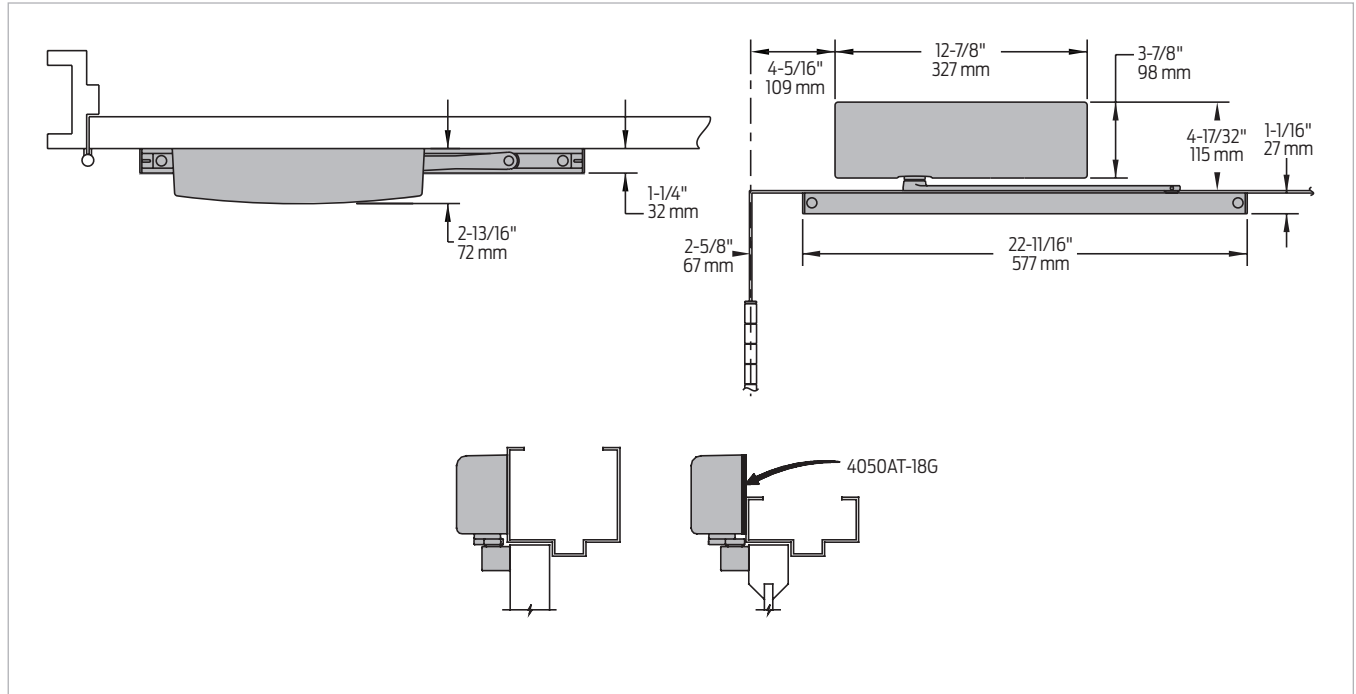


Butt hinges	Should not exceed 5" (127 mm) in width
Auxiliary stop	<ul style="list-style-type: none"> Recommended at hold open point or where a door cannot swing 180° Optional track bumper assembly assists back check in cushioning the opening swing of the door It is not intended to replace an auxiliary stop
Reveal	Should not exceed 1/8" (3 mm) for standard arm
Top rail	Less than 4 1/8" (104 mm) requires plate, 4050AT-18. Plate requires 2 1/16" (52mm) minimum.
Head frame	Requires 1 1/4" (32 mm) minimum
Clearance	2 13/16" (52 mm) behind door required for 90° installation
Maximum opening	Templating allows 180°

Note: Consult factory for applications where door must swing 180°.

Mounting details

Top jamb (pull) side mounting

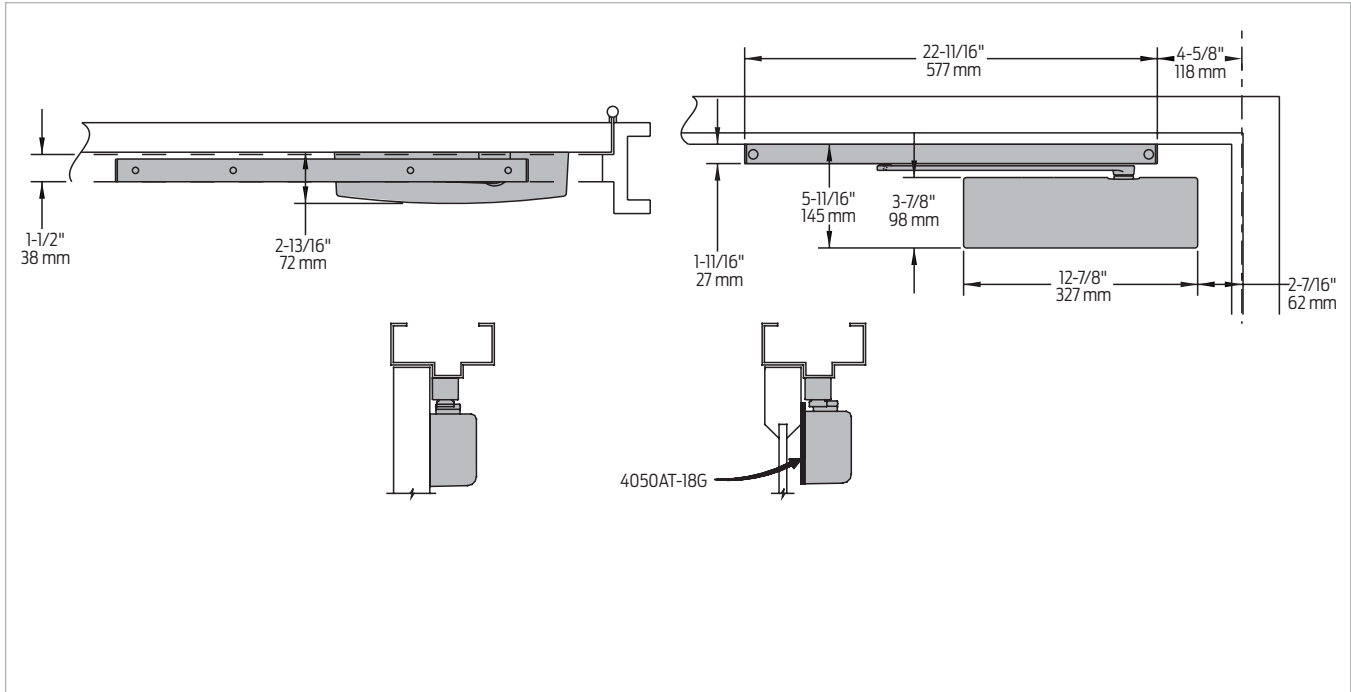


Butt hinges	Should not exceed 5" (127 mm) in width
Auxiliary stop	<ul style="list-style-type: none"> Recommended at hold open point or where a door cannot swing 180° Optional track bumper assembly assists back check in cushioning the opening swing of the door It is not intended to replace an auxiliary stop
Reveal	Should not exceed 1/8" (3 mm)
Head frame	Less than 4 1/2" (114 mm), requires plate, 4050AT-18G. Plate requires 2 1/16" (52 mm) minimum.
Clearance	1 1/4" (32 mm) behind door required for 180° installation
Maximum opening	Templating allows 180°

Note: Consult factory for applications where an exterior or large/heavy door must swing 180°.

Mounting details

Stop face (push) side mounting

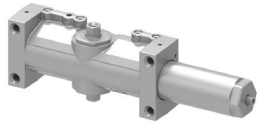


Butt hinges	Should not exceed 5" (127 mm) in width
Auxiliary stop	<ul style="list-style-type: none"> Recommended at hold open point or where a door cannot swing 120° Optional track bumper assembly assists back check in cushioning the opening swing of the door It is not intended to replace an auxiliary stop
Clearance	Projects 2 9/16" (65 mm) from face of door
Top rail	<ul style="list-style-type: none"> Less than 5 11/16" (144 mm) measured from the stop, requires plate, 4050AT-18G Plate requires 3 5/16" (84 mm) minimum
Stop width	Minimum 1 1/4" (32 mm)
Maximum opening	Templating allows 120°

Note: Consult factory for applications where door must swing 180°.

Accessories

Cylinders



- 4050AT-3071**
Cast aluminum cylinder assembly (CYL)
- Non-handed
 - Standard

Covers

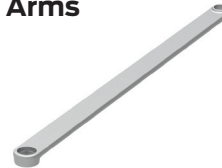


- 4050AT-72**
Plastic Cover (PC)
- Non-handed
 - Standard



- 4050AT-72MC**
Metal Cover (MC)
- Non-handed
 - Required for plated finishes and custom powder coat finishes
 - Optional

Arms



- 4050AT-3077T**
Standard Arm (STDTRKARM)
- Non-handed
 - Arm does not include track roller



- 4050AT-3077DE**
Double Egress Arm (DE)
- Handed
 - For double egress doors and frames
 - Does not include track roller
 - Maximum reveal is 3" (76 mm)
 - Optional

Tracks



- 4050AT-3038**
Standard Track (STDTRK)
- Non-handed
 - Non hold open
 - Will accept hold open clip and/or bumper assembly
 - Standard



- 4050AT-3038B**
Track with Bumper (BUMP)
- Non-handed
 - Non hold open
 - Will accept hold open clip
 - Optional

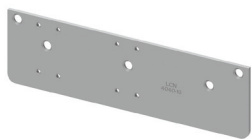


- 4050AT-3038H**
Hold Open Track (H)
- Non-handed
 - With hold open clip installed
 - Will accept bumper assembly
 - Optional



- 4050AT-3038HB**
Hold Open Track with Bumper (HBMP)
- Non-handed
 - With hold open clip and bumper assembly installed
 - Optional

Installation accessories



- 4050AT-18**
Plate
- Required for pull side (door mount) installations where top rail is less than 4 1/8"
 - Requires minimum 2 1/16" top rail



- 4050AT-18G**
Plate
- Required for pull side top jamb installations where head frame is less than 4 1/2"
 - Requires minimum 2 1/16" head frame
 - Required for push side (door mount) installations where top rail is less than 5 11/16" measured from the stop
 - Requires minimum 3 5/16" top rail



- 4050AT-169**
Track bumper
- Mounts in track to assist back check, does not replace auxiliary stop
 - Limits maximum opening; consists of bumper, bumper post and mounting screw



- 4050AT-3054**
Hold open clip
- Mounts in track to provide hold open function
 - Hold open point controlled by clip location
 - Consists of clip and mounting screws
 - Requires 4050AT-3034H hold open track roller



- 4050AT-3034**
Track roller
- Quiet, low friction roller assembly
 - Shoulder dimension "X" = 1/8" (3mm)



- 4050AT-3034H**
Hold open track roller
- Quiet, low friction roller assembly
 - Shoulder dimension "X" = 1/8" (3mm)



- 4050AT-480**
Pinion extender
- Connects pinion to arm

Introduction
Product selection guide
4010/4010T Series
4020/4020T Series
4030/4030T Series
4040XP/4040XPT Series
4050A/4050AT Series
4110/4110T Series
4000T Series