

4040XPT Series



The 4040XPT is a Grade 1 device featuring a cast iron body and Liquid X Fluid ideal for pull or push side placement in high traffic applications. Its high-quality construction provides for reliable performance.

Features

Certifications	Grade 1 - ANSI A156.4, UL 10C, ADA, 100 hour salt spray, meets BAA - Buy American Act	Cover	<ul style="list-style-type: none"> Redesigned snap-fit plastic cover (PC) with improved retention fit, standard Metal cover (MC), optional
Body construction	<ul style="list-style-type: none"> Cast iron body Full complement bearing 1½" diameter piston Double heat treated pinion journal 	Fasteners	Self reaming and tapping screws (SRT)
Fluid	All weather liquid X fluid	Mounting	Pull side on door, pull side top jamb, push side on door
Handing	Non-handed	Arms	Standard arm and track with roller
Size	Adjustable spring size 1-4	Finishes/colors/powder coat	<ul style="list-style-type: none"> 622 Matte black 689 Aluminum 690 Statuary bronze 691 Light bronze 693 Black 695 Dark bronze 696 Brass Custom colors optional
Warranty	30 years		<ul style="list-style-type: none"> Optional SRI primer - powder coat only Optional plated finishes

Special templates | Customized installation templates or products may be available to solve non-standard applications. Contact LCN Product Support for assistance.

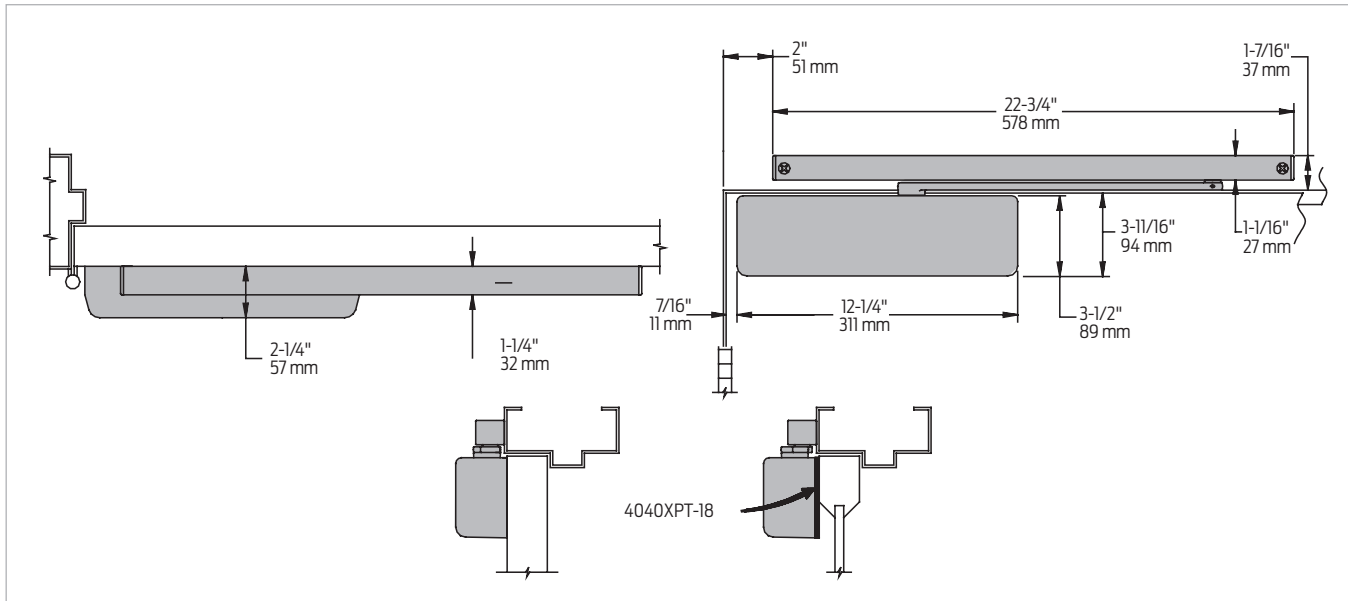
Mounting	Finish	Cover	Cylinder	Arm function*
Hinge (pull) side	Plastic	Non-handed	Regular (double)	Hold Open
Top jamb (pull)	Metal	Non-sized	Standard (single)	Fusible Link
Top jamb (push)	Powder coat	Accessibility	Hold Open	EDA/HEDA
Parallel arm	Plated	Delay Action***	Fusible Link	CUSH/HCUSH
Stop face		CYLAVB**	EDA/HEDA	SCUSH/SHCUSH
				Double Egress
			120° 110°	95°

- Available
- Not available

Closer available with less than 5.0 lbs. opening force on 36" door.
 * Maximum opening/hold open point with standard template.
 ** Advanced Variable Back Check.
 *** Delay feature incorporates standard 4040 cylinder (not XP).

Mounting details

Hinge (pull) side mounting

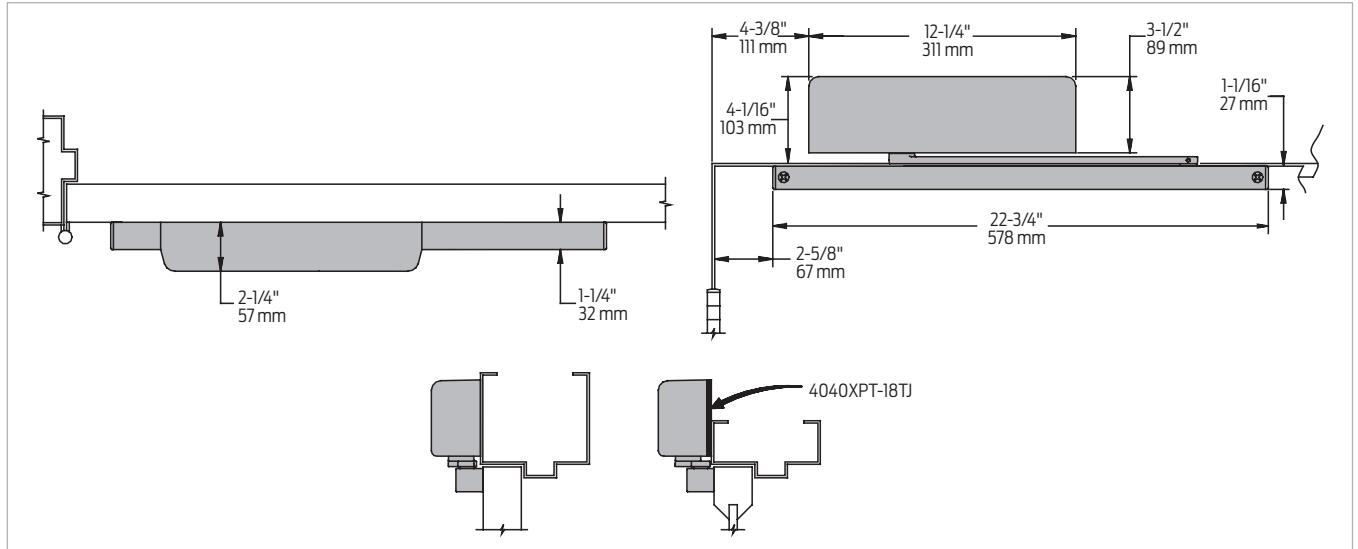


Butt hinges	Should not exceed 5" (127 mm) in width
Auxiliary stop	<ul style="list-style-type: none"> Recommended at hold open point or where a door cannot swing 120° Optional track bumper assembly assists back check in cushioning the opening swing of the door Track bumper is not intended to replace an auxiliary stop
Reveal	Should not exceed 1/8" (3 mm) for standard arm
Top rail	Less than 3 3/4" (95 mm) requires plate, 4040XPT-18. Plate requires 1 13/16" (44 mm) minimum.
Head frame	Requires 1 1/4" (32 mm) minimum
Clearance	2 1/4" (57 mm) behind door required for 90° installation
Maximum opening	<ul style="list-style-type: none"> Templating allows 120° with standard arm, limited to 110° when optional bumper is installed Variable hold open angles with infinite options

Note: Consult factory for applications where door must swing 180°

Mounting details

Top jamb (pull) side mounting

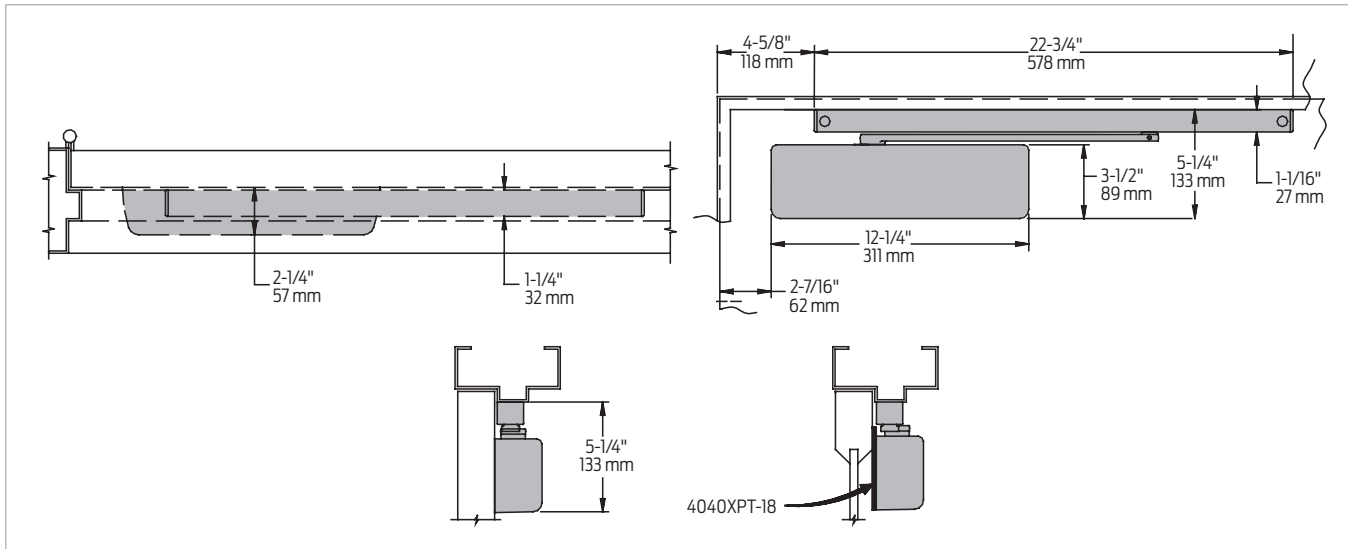


Butt hinges	Should not exceed 5" (127 mm) in width
Auxiliary stop	<ul style="list-style-type: none"> Recommended at hold open point or where a door cannot swing 180° Optional track bumper assembly assists back check in cushioning the opening swing of the door It is not intended to replace an auxiliary stop
Reveal	Should not exceed 1/8" (3 mm)
Head frame	Less than 3 7/8" (98 mm), requires plate, 4040XPT-18TJ. Plate requires 1 3/4" (44 mm) minimum.
Clearance	1 1/4" (32 mm) behind door required for 180° installation
Maximum opening	<ul style="list-style-type: none"> Templating allows 180° with standard track arm, limited to 110° with optional bumper installed Consult factory if door will be held open at 180° Variable hold open angles with infinite options

Note: Consult factory for applications where an exterior or large/heavy door must swing 180°

Mounting details

Stop face (push) side mounting



Butt hinges	Should not exceed 5" (127 mm) in width
Auxiliary stop	<ul style="list-style-type: none"> Recommended at hold open point or where a door cannot swing 120° Optional track bumper assembly assists back check in cushioning the opening swing of the door It is not intended to replace an auxiliary stop
Clearance	Projects 2 1/4" (57 mm) from face of door
Top rail	<ul style="list-style-type: none"> Less than 5 1/4" (133 mm) measured from the stop, requires plate, 4040XPT-18 Plate requires 3 1/2" (89 mm) minimum
Stop width	Minimum 1 1/4" (32 mm)
Maximum opening	<ul style="list-style-type: none"> Templating allows 120° with standard track arm, limited to 110° with optional bumper tracks Variable hold open angles with infinite options

Note: Consult factory for applications where door must swing 180°.

Accessories

Cylinders

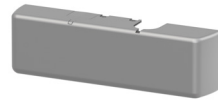
Image below does not reflect the enhanced 4040XP design. Updated image coming soon.



**4040XPT-3071
Cast iron cylinder
assembly (CYL)**

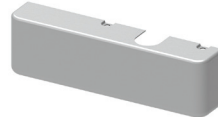
- Non-handed
- Standard

Covers



**4040XPT-72
Plastic Cover (PC)**

- Non-handed
- Snap-on
- Standard



**4040XPT-72MC
Metal Cover (MC)**

- Handed
- Required for plated finishes and custom powder coat finishes
- Optional

Arms



**4040XPT-3077T
Standard Arm
(STDTRKARM)**

- Non-handed
- Arm does not include track roller



**4040XPT-3077DE
Double Egress Arm
(DE)**

- Handed
- For double egress doors and frames
- Does not include track roller
- Maximum reveal is 2 11/16" (68mm)
- Optional

Tracks



**4040XPT-3038
Standard Track (STDTRK)**

- Non-handed
- Non hold open
- Will accept hold open clip and/or bumper assembly
- Standard



**4040XPT-3038B
Track with Bumper (BUMP)**

- Non-handed
- Non hold open
- Will accept hold open clip
- Optional



**4040XPT-3038H
Hold Open Track (H)**

- Non-handed
- With hold open clip installed
- Will accept bumper assembly
- Optional



**4040XPT-3038HB
Hold Open Track with Bumper
(HBMP)**

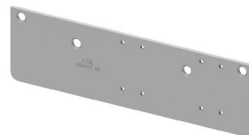
- Non-handed
- With hold open clip and bumper assembly installed
- Optional

Installation accessories



**4040XPT-18
Plate**

- Required for pull side (door mount) installations where top rail is less than 3 3/4" (95 mm)
 - Requires minimum 1 3/4" (44 mm) top rail
- Required for push side (door mount) installations where top rail is less than 5 1/4" (133 mm) measured from the stop
 - Requires minimum 3 1/2" (89 mm) top rail



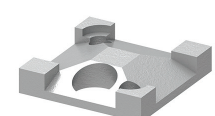
**4040XPT-18TJ
Plate**

- Required for pull side top jamb installations where head frame is less than 3 7/8" (98 mm)
 - Requires minimum 1 3/4" (44 mm) head frame



**4040XPT-169
Track bumper**

- Mounts in track to assist back check, does not replace auxiliary stop
- Limits maximum opening. Consists of bumper, bumper post, and mounting screw



**4040XPT-3054
Hold open clip**

- Mounts in track to provide hold-open function
- Hold open point controlled by clip location
- Consists of clip and mounting screws
- Requires 4040XPT-3034H hold open track roller



**4040XPT-3034
Track roller**

- Quiet, low friction roller assembly
- Shoulder dimension "X" = 1/8" (3mm)



**4040XPT-3034H
Hold open track roller**

- Quiet, low friction roller assembly
- Shoulder dimension "X" = 1/8" (3mm)

Introduction
Product selection guide
4010/4010T Series
4020/4020T Series
4030/4030T Series
4040XP/4040XPT Series
4050A/4050AT Series
4110/4110T Series
4000T Series