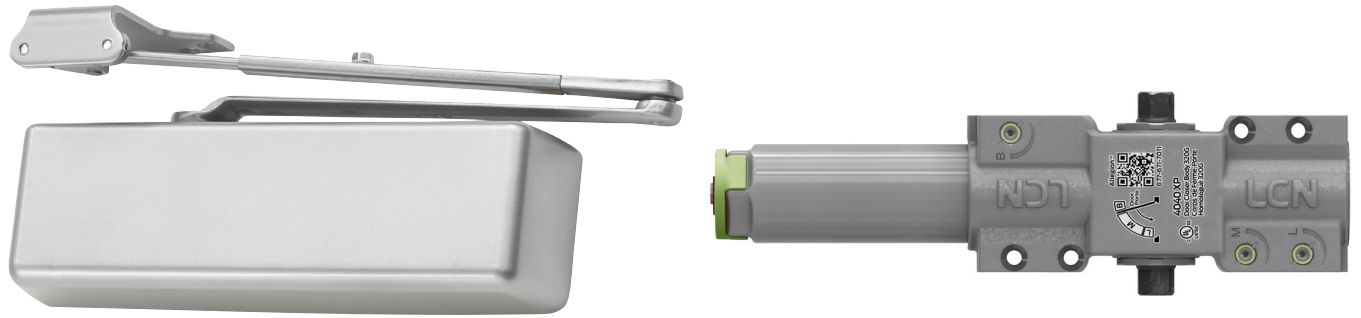


4040XP Series



The 4040XP Series is LCN's most popular door closer—and for good reason. This durable non-handed, surface-mounted heavy-duty closer, is designed for the most demanding high-use-and-abuse applications as well as for easy installation and maintenance.

Features

| | | | |
|--------------------------|--|-------------------------------------|---|
| Certifications | Grade 1 - ANSI A156.4, UL 10C, ADA, 100 hour salt spray, meets BAA - Buy American Act | Cover | <ul style="list-style-type: none"> Redesigned snap-fit plastic cover (PC) with improved retention fit, standard Metal Cover (MC), optional |
| Body construction | <ul style="list-style-type: none"> Patent-pending positive stop Patent-pending regulation valve indicators Independent speed adjustments QR code for instructions and support Cast iron body Full complement bearing 1 1/2" diameter piston Double heat treated pinion journal | Fasteners | Self reaming and tapping screws (SRT) |
| Fluid | All weather liquid X fluid | Mounting | Hinge (pull side), top jamb (push side), parallel arm (push side) |
| Handing | Non-handed | Arms | Regular arm |
| Templating | Peel-n-Stick templates - 2 1/4" x 5" mounting hole pattern | Finishes/colors/ powder coat | <ul style="list-style-type: none"> 622 Matte black 689 Aluminum 690 Statuary bronze 691 Light bronze 693 Black 695 Dark bronze 696 Brass Custom colors optional |
| Size | Adjustable spring size 1-6, includes LCN Green Dial | | <ul style="list-style-type: none"> Optional SRI primer - powder coat only Optional plated finishes |
| Warranty | 30 years | | |

Special templates | Customized installation templates or products may be available to solve non-standard applications. Contact LCN Product Support for assistance.

| Mounting | Finish | Cover | Cylinder | Arm function* |
|--|---|---|--------------------------------------|---|
| Hinge (pull) side Top jamb (pull) Top jamb (push) Parallel arm Stop face | Powder coat Plated Plastic Metal | Non-handed Non-sized Accessibility Delay Action *** CYLAVB** | 120° 120° 180° 110° 110° | Regular (double) Standard (single) Hold Open Fusible Link EDA/HEDA CUSH/HCUSH SCUSH/SHCUSH Double Egress |
| ■ Available ■ Not available | ■ Available ■ Not available | ■ Available ■ Not available ♿ Closer available with less than 5.0 lbs. opening force on 36" door. | ■ Available ■ Not available | ■ Available ■ Not available |

* Maximum opening/hold open point with standard template.
 ** Advanced Variable Back Check.
 *** Delay feature incorporates standard 4040 cylinder (not XP).

Introduction
 Product selection guide
 4010/4010T Series
 4020/4020T Series
 4030/4030T Series
 4040XP/4040XPT Series
 4050A/4050AT Series
 4110/4110T Series
 4000T Series

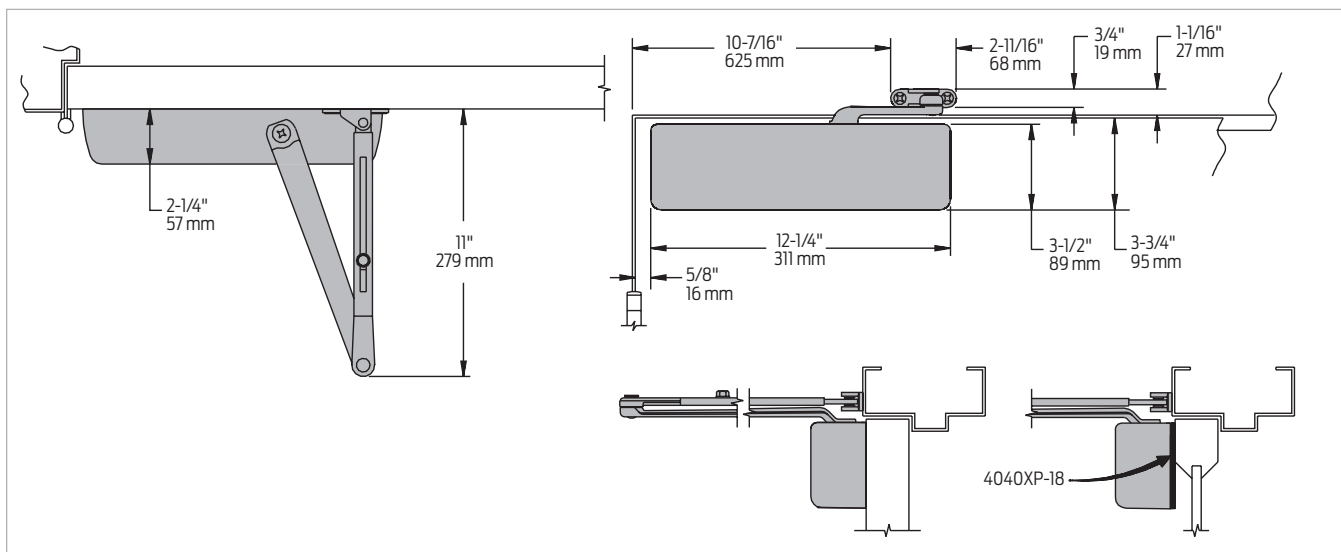
Adjustments

There are several design features that make installation or adjustment of the 4040XP easier and more intuitive.

- **LCN Green Dial** provides a visual reference of the spring power setting, taking the guesswork out of spring power adjustments.
- **Additional adjustments** can be made to the back check, main, and latch regulation valves which are labeled for easy identification.
 - Labels correspond to a diagram with door swing zones located on the closer body.
- **Patent-pending positive stop feature** on all regulation valves. The improved staking feature prevents the screw from being backed out and causing accidental damage to the product.
 - The patent-pending regulation valve indicators provide visual color indicators of how far a screw is backed out—the more visible the component, the faster the speed.
 - This makes adjustments simpler and more intuitive.
- **New QR code** that provides on-the-spot access to interactive installation and maintenance instructions and tech support.

Mounting details

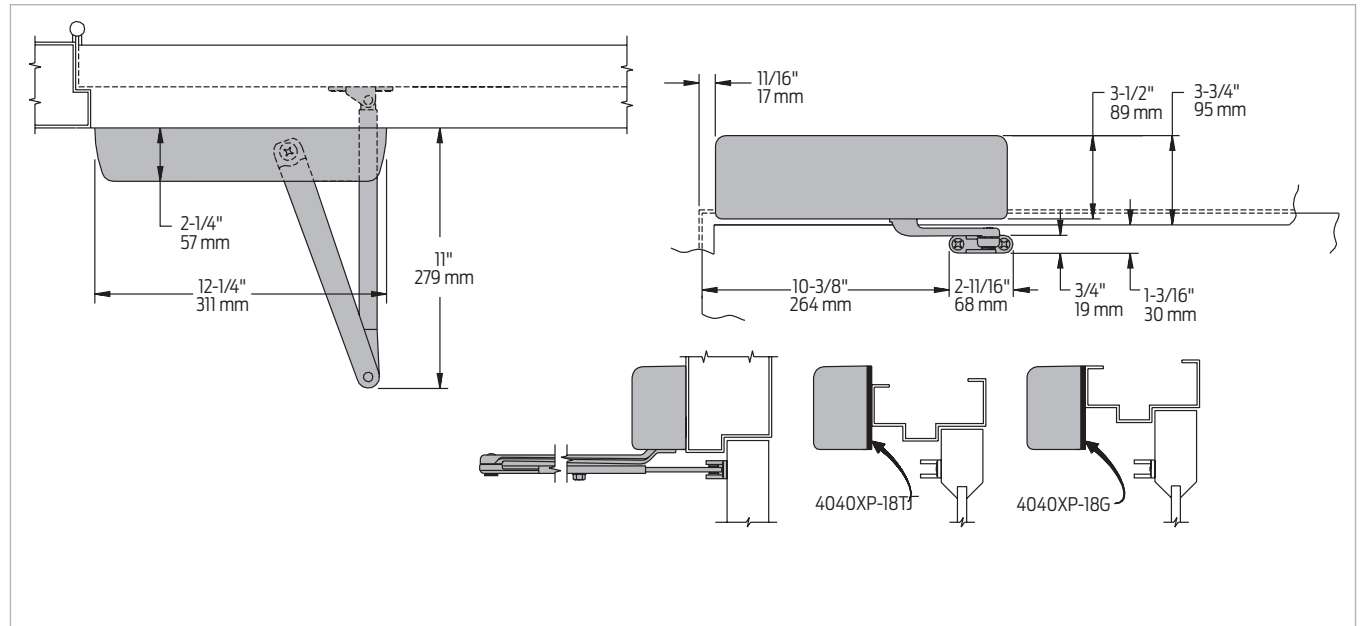
Hinge (pull) side mounting



| | |
|-----------------|--|
| Butt hinges | Should not exceed 5" (127 mm) in width |
| Auxiliary stop | Recommended at hold open point or where a door cannot swing beyond 120° |
| Reveal | Should not exceed 3/4" (19 mm) for Regular or Hold Open Arm |
| Top rail | Less than 3 3/4" (95 mm) requires plate, 4040XP-18; Plate requires 2" (51 mm) minimum |
| Clearance | 2 3/8" (60 mm) behind door required for 90° installation |
| Delay action | <ul style="list-style-type: none"> ▪ Incorporates standard 4041 cylinder ▪ Delays closing from 120° to 70° ▪ Delay time adjustable up to approximately 1 minute |
| Maximum opening | <ul style="list-style-type: none"> ▪ Templating allows up to 120° ▪ Hold open points 90° up to 120° with Hold Open Arm |

Mounting details

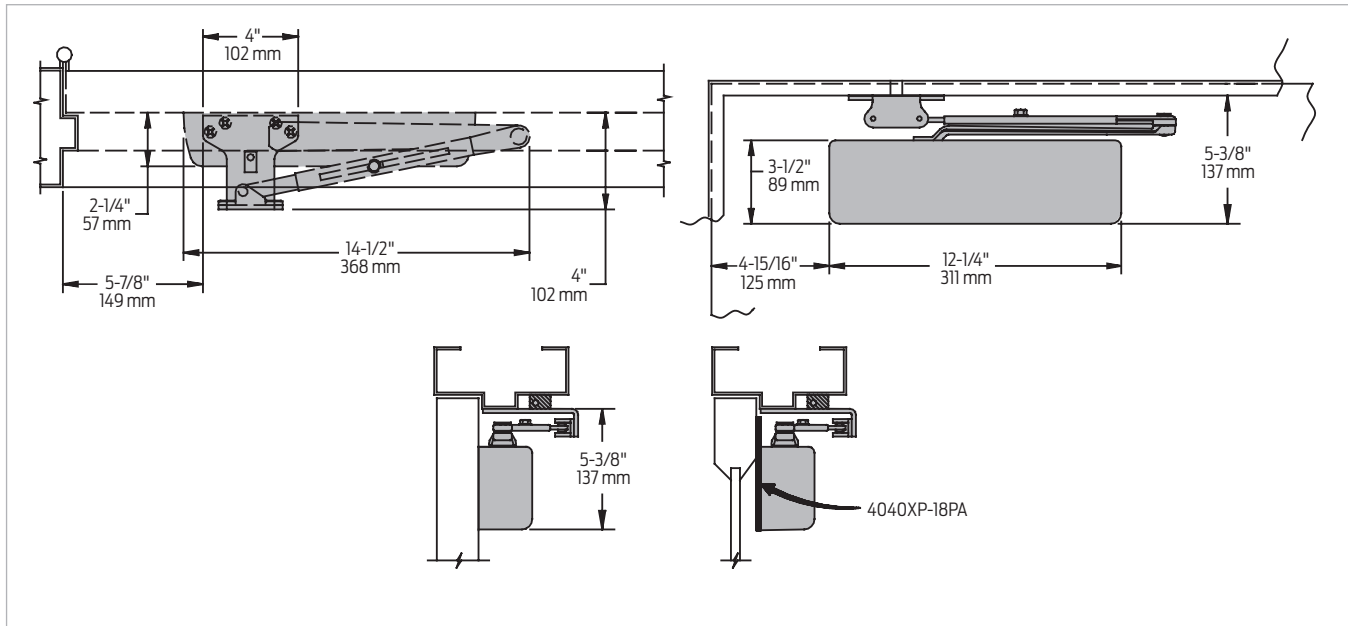
Top jamb (push) side mounting



| | | | |
|------------------------|--|---------------|--------------------|
| Butt hinges | Should not exceed 5" (127 mm) in width | | |
| Auxiliary stop | Recommended at hold open point or where a door cannot swing beyond 120° | | |
| Reveal | Arm type | Reveal | Max opening |
| | Regular Arm | 2 9/16" | Up to 120° |
| | Long Arm | 4 13/16" | Up to 120° |
| | Hold Open Arm | 2 9/16" | Up to 120° |
| | Hold Open Long Arm | 8" | Up to 120° |
| Top rail | <ul style="list-style-type: none"> Requires 1 1/4" (32 mm) minimum 2 1/4" (57 mm) minimum with closer on plate, 4040XP-18TJ 3" (76 mm) minimum with closer on plate, 4040XP-18G | | |
| Head frame | <ul style="list-style-type: none"> Less than 3 1/2" (89 mm) requires plate, 4040XP-18TJ With flush ceiling, use plate, 4040XP-18G. Either plate requires 1 3/4" (44 mm) minimum | | |
| Maximum opening | <ul style="list-style-type: none"> Templating allows up to 120° Hold open points 85° up to 120° with Hold Open Arm | | |
| Delay action | <ul style="list-style-type: none"> Incorporates standard 4041 cylinder Delays closing from 120° to 70° Delay time adjustable up to approximately 1 minute | | |

Mounting details

Parallel arm (push) side mounting



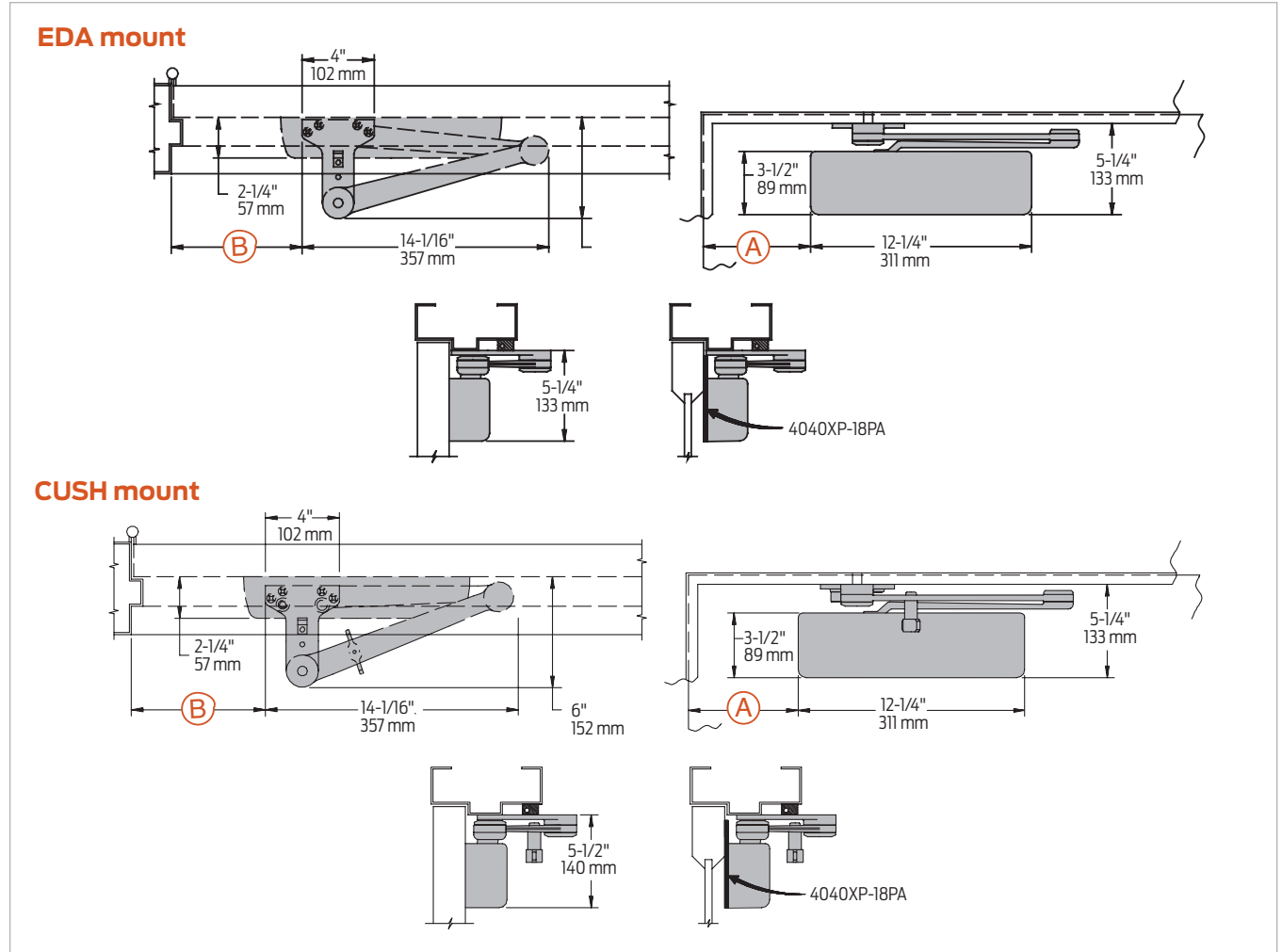
| | |
|-----------------|---|
| Butt hinges | Should not exceed 5" (127 mm) in width |
| Auxiliary stop | Recommended at hold open point, where the door cannot swing 180°, or where Cush-n-Stop Arm is not used |
| Reveal | Should not exceed 7/32" (6 mm) |
| Top rail | Less than 5 3/8" (137 mm) measured from the stop requires plate, 4040XP-18PA. Plate requires 2" (51 mm) minimum from the stop. |
| Head frame | Flush or rabbeted requires PA shoe adapter, 4040XP-419 |
| Stop width | Minimum 1" (25 mm). CUSH arm requires minimum 1 1/2" (38 mm) |
| Blade stop | Clearance requires 1/2" (13mm) blade stop spacer, 4040XP-61 |
| Clearance | <ul style="list-style-type: none"> 4040XP-62PA shoe is 4" (102 mm) from door face EDA shoe projects 5 1/2" (140 mm) from door face CUSH shoe projects 6" (152 mm) from door face |
| Delay action | <ul style="list-style-type: none"> Incorporates standard 4041 cylinder, without XP cylinder Delays closing from 120° to 70° Delay time adjustable up to approximately 1 minute |
| Maximum opening | <ul style="list-style-type: none"> 180° opening/hold open points with all except CUSH arms 110° opening/hold open with CUSH arms |

Notes:

- Optional mounting requires PA shoe, 4040XP-62PA for regular or Hold Open Arms
- Add prefix "P" to closer description (eg. P4040XP)
- P4040XP closer includes 4040XP-201 fifth hole spacer to support PA shoe

Mounting details

EDA and CUSH mounting



| | | |
|------------------------|---|--|
| Clearance | 4040XP-62EDA is 5 1/2" (140 mm) from door face; 6" (152 mm) for CUSH | |
| Head frame | Flush or rabbeted requires CUSH flush panel adapter, 4040XP-419 | |
| CUSH Arm | Requires shoe support, 4040XP-30 for fifth screw anchorage where reveal is less than 3 1/16" (78 mm) | |
| Delay action | <ul style="list-style-type: none"> Incorporates standard 4041 cylinder, without XP cylinder Delays closing from maximum opening to; 115° with 180° template, 95° with 110° template, 85° with 100° template, 75° with 90° template (delay time adjustable up to approximately 1 minute) | |
| Maximum opening | EDA arm can be templated for points at: | CUSH arms can be templated for opening/hold open point at: |
| | 110°: A = 6 3/8" (162 mm) B = 7 3/4" (197 mm) | 85°: A = 7 15/16" (202 mm) B = 9 1/8" (232 mm) |
| | or 180°: A = 2 7/8" (73 mm) B = 4 1/4" (108 mm) | 90°: A = 7 3/16" (183 mm) B = 8 1/2" (216 mm) |
| | Hold open points up to maximum opening with HEDA arm | 100°: A = 6 1/16" (154 mm) B = 7 1/4" (184 mm) |
| | | or 110°: A = 5 1/16" (129 mm) B = 6 3/8" (162 mm) |

Notes:

- 4040XP Series closers ordered with EDA or CUSH arms include 4040XP-201 fifth hole spacer to support the shoe
- SCUSH stop points are approximately 5° more than templated stop point
- Hold open at templated stop points

Introduction
 Product selection guide
 4010/4010T Series
 4020/4020T Series
 4030/4030T Series
 4040XP/4040XPT Series
 4050A/4050AT Series
 4110/4110T Series
 4000T Series

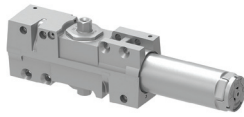
Accessories

Cylinders



**4040XP-3071
Cast iron cylinder
assembly (CYL)**

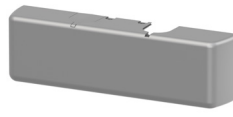
- Non-handed
- Heavy duty



**4041-3071 DEL
Delay Action Cylinder
(CYLDEL)**

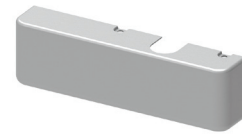
- Used for delayed action closing
- Non-handed
- Heavy duty

Covers



**4040XP-72
plastic cover (PC)**

- Non-handed
- Includes 4040XP-54 snap-on cover clip
- Redesigned patent-pending snap-fit cover with improved retention fit



**4040XP-72MC
metal cover (MC)**

- Handed
- Required for plated finishes and custom powder coat finishes
- Optional

Arms



**4040XP-3077
Regular Arm (REGARM)**

- Non-handed
- Mounts pull side or top jamb with shallow reveal P4041 closer includes PA shoe, 4040XP-62PA required for parallel arm mounting



**4040XP-3077L
Long Arm (LONG)**

- Non-handed
- Includes long rod and shoe, 4040XP-79LR for top jamb mount
- Optional



**4040XP-3077ELR
Extra Long Arm (XLONG)**

- Non-handed
- Includes extra long rod and shoe, 4040XP-79ELR for top jamb mount with deep reveal
- Optional



**4040XP-3049
Hold Open Arm (H)**

- Non-handed
- Mounts pull side or top jamb with shallow reveal, hold open adjustable shoe
- 4040XP closer includes 4040XP-62PA shoe required for parallel arm mounting
- Optional



**4040XP-3049L
Hold Open Long Arm (HLONG)**

- Non-handed
- Includes long head and tube, 4040XP-3048L for top jamb mount
- Optional



**4040XP-3077EDA
Extra Duty Arm (EDA)**

- Non-handed
- Features forged, solid steel main and forearm for potentially abusive installations
- Optional



**4040XP-3049EDA
Hold Open Extra Duty Arm (HEDA)**

- Handed
- Parallel arm features forged, solid steel main and forearm for potentially abusive installations
- Hold open function is adjusted at the shoe
- Optional



**4040XP-3077EDA/62G
Extra Duty Arm with 62G Thick
Hub Shoe (EDAW62G)**

- Non-handed
- Features forged, solid steel main and forearm for potentially abusive installations
- 62G shoe provides additional blade stop clearance
- Optional



**4040XP-3049EDA/62G
Hold Open Extra Duty arm with 62G
Thick Hub Shoe (HEDA62G)**

- Handed
- Features forged, solid steel main and forearm for potentially abusive installations
- 62G shoe provides additional blade stop clearance; hold open function is adjusted at the shoe
- Optional



**4040XP-3077CNS
Cush-n-Stop Arm (CUSH)**

- Non-handed
- Features solid forged steel main arm and forearm with stop in soffit shoe.
- Optional



**4040XP-3049CNS
Hold Open Cush-n-Stop Arm
(HCUSH)**

- Non-handed
- Hold open function with templated stop/hold open points
- Handle controls hold open function
- Optional

Accessories

Arms (cont.)



- 4040XP-3077SCNS
Spring Cush-n-Stop Arm (SCUSH)**
- Non-handed
 - For potentially abusive applications features solid forged steel main arm and forearm with spring loaded stop in the soffit shoe
 - Optional



- 4040XP-3049SCNS
Spring Hold Open Cush-n-Stop Arm (SHCUSH)**
- Non-handed
 - For potentially abusive applications features solid forged steel main arm and forearm with spring loaded stop in the soffit shoe
 - Handle controls hold open function
 - Optional

Installation accessories



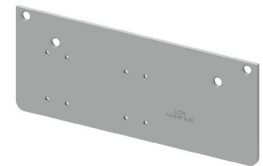
- 4040XP-18
Plate**
- Required for hinge side mount where top rail is less than 3 3/4" (95 mm)
 - Requires minimum 2" (51 mm) minimum top rail



- 4040XP-18G
Plate**
- Locates top jamb mounted closer flush with top of head frame face in flush ceiling condition
 - Requires 1 3/4" (44 mm) minimum head frame



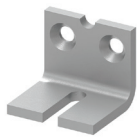
- 4040XP-18TJ
Plate**
- Centers top jamb mounted closer vertically on head frame where face is less than 3 1/2" (89 mm). Plate requires 1 3/4" (44 mm) minimum head frame



- 4040XP-18PA
Plate**
- Required for parallel arm mounting where top rail is less than 5 1/2" (140 mm), measured from the stop
 - Requires 2" (51 mm) minimum top rail



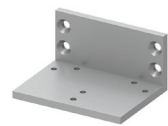
- 4040XP-62PA
PA shoe**
- Required for parallel arm mounting



- 4040XP-30
CUSH shoe support**
- Provides anchorage for fifth screw used with CUSH arms, where reveal is less than 3 1/16" (78 mm)
 - Optional



- 4040XP-61
Blade stop spacer**
- Required to lower parallel arm shoe to clear 1/2" (13 mm) blade stop
 - Optional



- 4040XP-419
PA flush panel adapter**
- Provides horizontal mounting surface for parallel arm shoe on single rabbeted or flush frame
 - Optional



- 4040XP-62A
Auxiliary shoe**
- Requires a top rail of 7" (178 mm)
 - Shoe replaces -62PA for parallel arm mounting of regular arm with overhead holder/stop
 - Optional



- 4040XP-54
Snap-on cover clip**
- Used to secure 4040XP-72 plastic cover to cylinder body

Introduction
Product selection guide
4010/4010T Series
4020/4020T Series
4030/4030T Series
4040XP/4040XPT Series
4050A/4050AT Series
4110/4110T Series
4000T Series