

# 4020T Series



The 4020T is a cast iron, heavy duty closer designed for interior, high traffic conditions. This Grade 1 device comes in various finishes and colors to match your interior look.

## Features

<b>Certifications</b>	Grade 1 - ANSI A156.4, UL 10C, ADA, 100 hour salt spray, meets BAA - Buy American Act	<b>Cover</b>	<ul style="list-style-type: none"> <li>Plastic Cover (PC), standard</li> <li>Metal Cover (MC), optional</li> </ul>
<b>Body construction</b>	<ul style="list-style-type: none"> <li>Cast iron body</li> <li>Full complement bearing</li> <li>1 1/2" diameter piston</li> <li>1/16" diameter double heat treated pinion journal</li> </ul>	<b>Fasteners</b>	Self Reaming and Tapping Screws (SRT)
<b>Fluid</b>	All weather fluid	<b>Mounting</b>	Top jamb (Pull side)
<b>Handing</b>	Handed	<b>Arms</b>	Standard arm, track with roller
<b>Templating</b>	Peel-n-Stick templates - 2 1/2" x 6" mounting hole pattern	<b>Finishes/colors/ powder coat</b>	<ul style="list-style-type: none"> <li>622 Matte black</li> <li>689 Aluminum</li> <li>690 Statuary bronze</li> <li>691 Light bronze</li> <li>693 Black</li> <li>695 Dark bronze</li> <li>696 Brass</li> <li>Custom colors optional</li> </ul>
<b>Size</b>	Sized 1, 3 or 4		<ul style="list-style-type: none"> <li>Optional SRI primer - powder coat only</li> <li>Optional plated finishes</li> </ul>
<b>Warranty</b>	30 years		

### Special templates

Customized installation templates or products may be available to solve non-standard applications. Contact LCN Product Support for assistance.

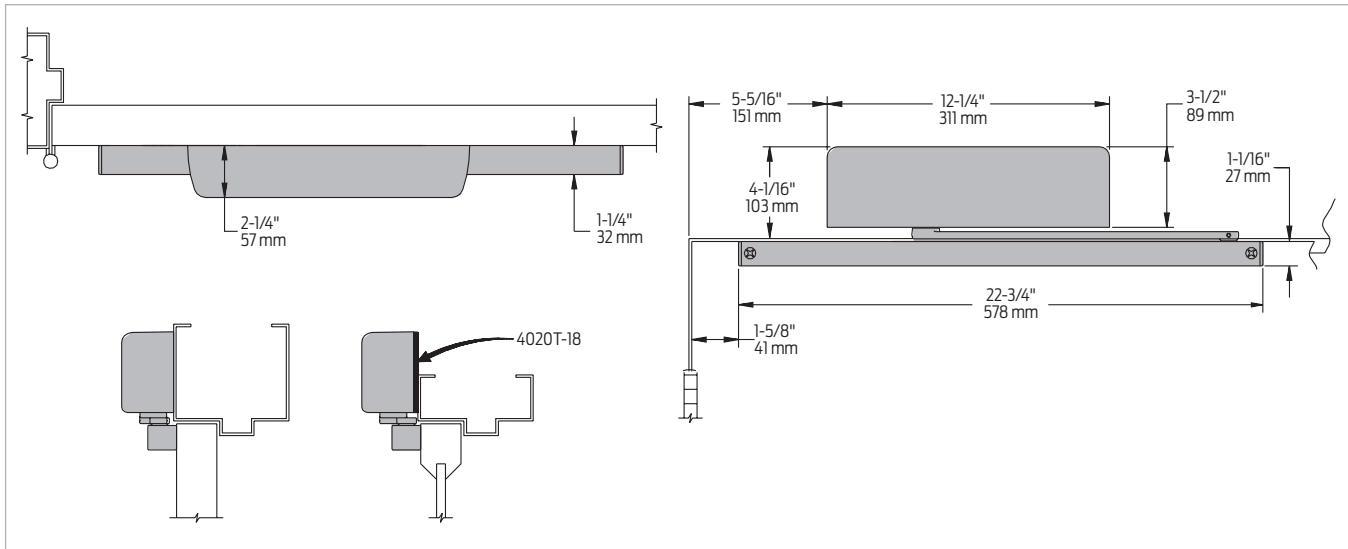
Mounting	Finish	Cover	Cylinder	Arm function*
Hinge (pull) side	Plastic	Non-handed	Regular (double)	Regular (double)
Top jamb (pull)	Metal	Non-sized	Standard (single)	Standard (single)
Top jamb (push)		Accessibility	Hold Open	Hold Open
Parallel arm		Delay Action***	Fusible Link	Fusible Link
Stop face		CYLAVB**	EDA/HEDA	EDA/HEDA
Powder coat			CUSH/H/CUSH	CUSH/H/CUSH
Plated			SCUSH/SHCUSH	SCUSH/SHCUSH
			Double Egress	Double Egress

■ Available  
■ Not available

♿ Closer available with less than 5.0 lbs. opening force on 36" door.  
 \* Maximum opening/hold open point with standard template.  
 \*\* Advanced Variable Back Check.  
 \*\*\* Delay action for 4040XP incorporates standard 4041 cylinder.

## Mounting details

### Top jamb (pull) side mounting

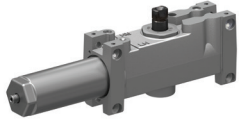


Butt hinges	Should not exceed 5" (127 mm) in width
Auxiliary stop	Recommended at hold open point or where a door cannot swing 180°
Reveal	Should not exceed 1/8" (3 mm)
Head frame	Less than 3 7/8" (98 mm), requires plate, 4020T-18. Plate requires 1 3/4" (44 mm) minimum.
Clearance	1 1/2" (38 mm) behind door required for 90° or 180° installation
Maximum opening	<ul style="list-style-type: none"> <li>▪ Templating allows 180° with standard track arm, limited to 100° with optional bumper installed</li> <li>▪ Consult factory if door will be held open at 180°</li> <li>▪ Variable hold open angles with infinite options</li> </ul>

Note: Optional track bumper assembly assists back check in cushioning the opening swing of the door. It is not intended to replace an auxiliary stop.

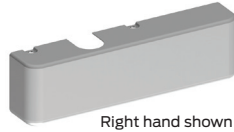
## Accessories

### Cylinders

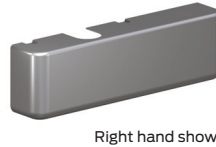


- 4021T(3)(4)-3071  
Cast iron cylinder assembly (CYL)**
- Handed
  - Standard

### Covers



- 4020T-72  
Plastic Cover (PC)**
- Handed
  - Standard



- 4020T-72MC  
Metal Cover (MC)**
- Handed
  - Required for plated finishes and custom powder coat finishes
  - Optional

### Arms



- 4020T-3077T  
Standard Arm (STDTRKARM)**
- Handed
  - Roller not included with arm

### Tracks



- 4020T-3038  
Standard Track (STDTRK)**
- Non-handed
  - Non hold open
  - Will accept hold open clip and/or bumper assembly
  - Standard



- 4020T-3038B  
Track with Bumper (BUMP)**
- Non-handed
  - Non hold open
  - With bumper assembly installed
  - Will accept hold open clip
  - Optional



- 4020T-3038H  
Hold Open Track (H)**
- Non-handed
  - With hold open clip installed
  - Will accept bumper assembly
  - Optional

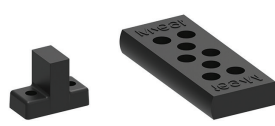


- 4020T-3038HB  
Hold Open Track with Bumper (HBMP)**
- Non-handed
  - With hold open clip and bumper assembly installed
  - Optional

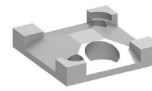
### Installation accessories



- 4020T-18  
Plate**
- Required where head frame is less than 3 7/8" (98 mm)
  - Requires minimum 1 3/4" (44 mm) frame face



- 4020T-169  
Track bumper**
- Mounts in track to assist back check, does not replace auxiliary stop
  - Limits maximum opening
  - Consists of bumper, bumper post, and mounting screw



- 4020T-3054  
Hold open clip**
- Mounts in track to provide hold open function
  - Hold open point controlled by clip location
  - Consists of clip and mounting screws
  - Requires 4020T-3034H Track Roller



- 4020T-3034  
Track roller**
- Quiet, low friction roller assembly
  - Shoulder dimension "X" = 1/16" (2mm)



- 4020T-3034H  
Track roller**
- Quiet, low friction roller assembly
  - Shoulder dimension "X" = 1/16" (2mm)
  - Spring-loaded hold-open mechanism

Introduction  
Product selection guide  
4010/4010T Series  
4020/4020T Series  
4030/4030T Series  
4040XP/4040XPT Series  
4050A/4050AT Series  
4110/4110T Series  
4000T Series