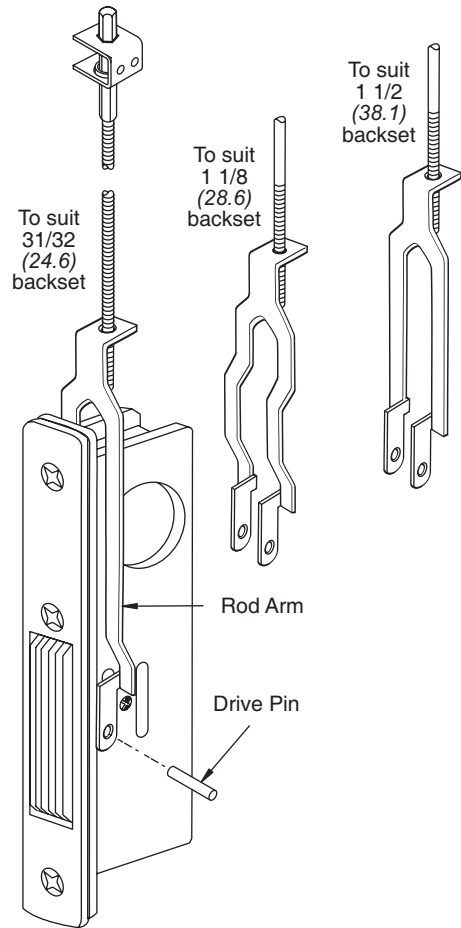
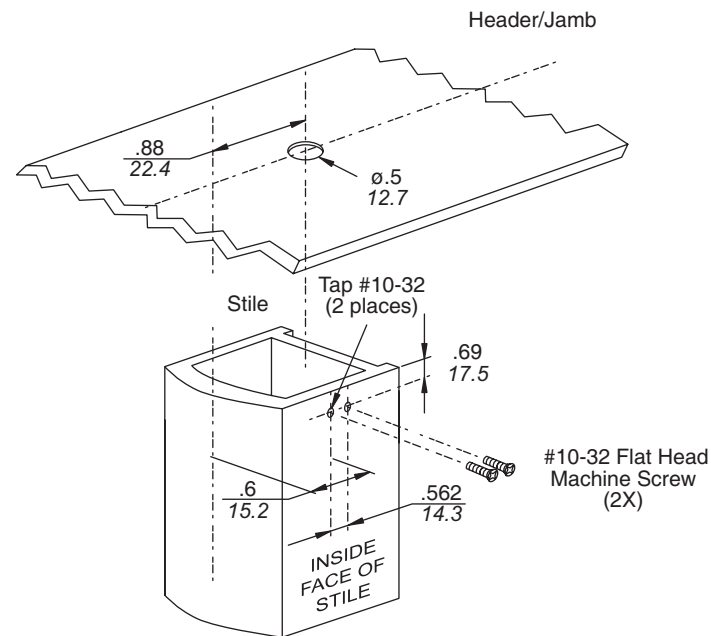


INSTALLATION

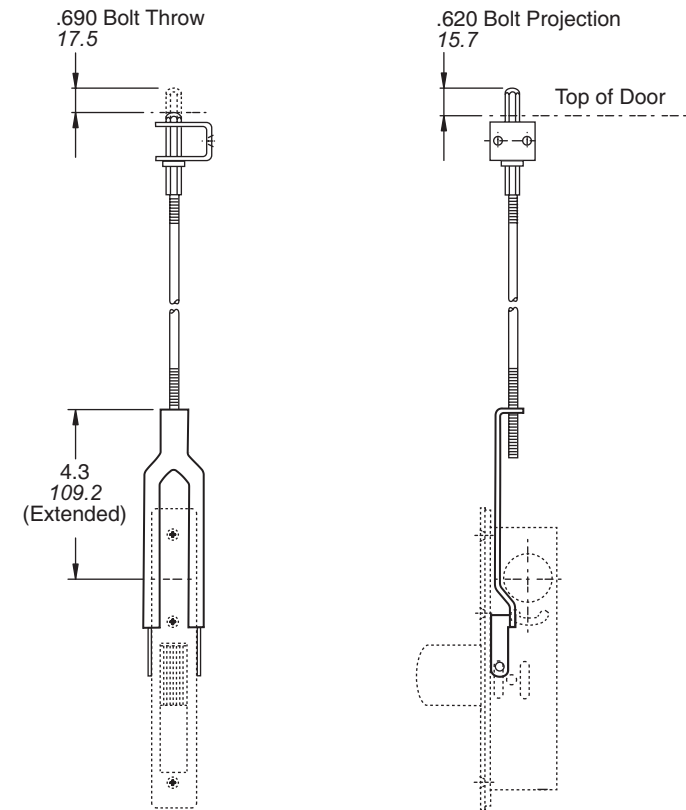


1. Tap or drill holes on top inside face of the stile as shown.
2. Drill 1/2" bolt hole in header/door jamb.
3. While the lock bolt is retracted, use the drive pin to fix the rod arm to the lock.
4. Cut off the length of rod bolt assy. to suit cylinder height.
5. Attach the rod to the rod arm.
6. Insert lock installed with header bolt into the stile.
7. Mount top guide and fasten securely.



DIMENSIONS

Inches
Millimeters

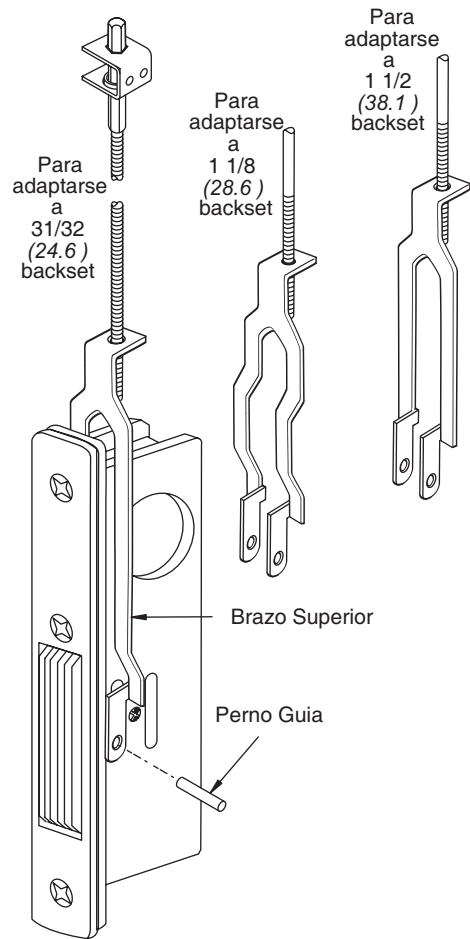


- Cut off the length of rod bolt assy. to suit low cylinder heights

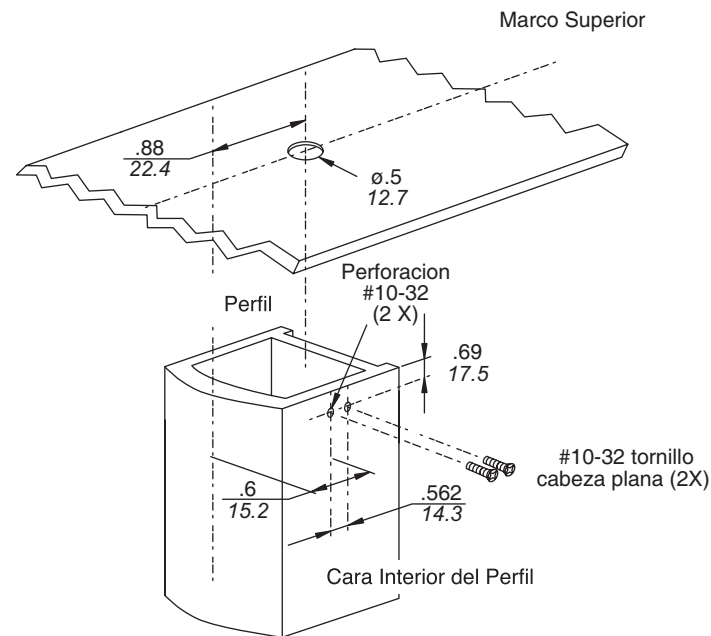
INSTALACIÓN

DIMENSIONES

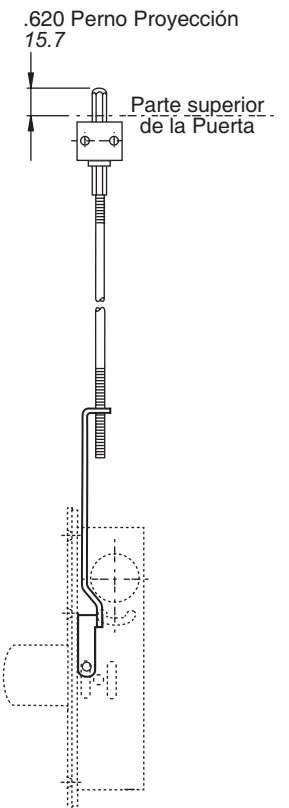
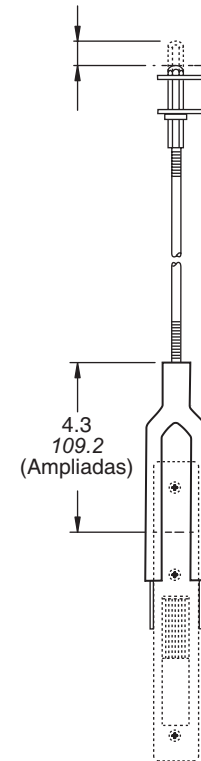
Pulgadas
Milímetros



1. Perforar agujeros en la tapa cara interior del perfil tal como se muestra.
2. Haga una perforación de 1/2" en el marco superior.
3. Mientras que el pestillo se retrae usar el perno guía para colocar el pasador superior.
4. Ajuste la longitud del pasador superior.
5. Ensamble el brazo y el pasador superior.
6. Instale la cerradura en el perfil.
7. Coloque la guía superior y sujete firmemente.



.690 Carrera del Perno
17.5



- Cortar la longitud de la varilla del pasador para ajustar la carrera