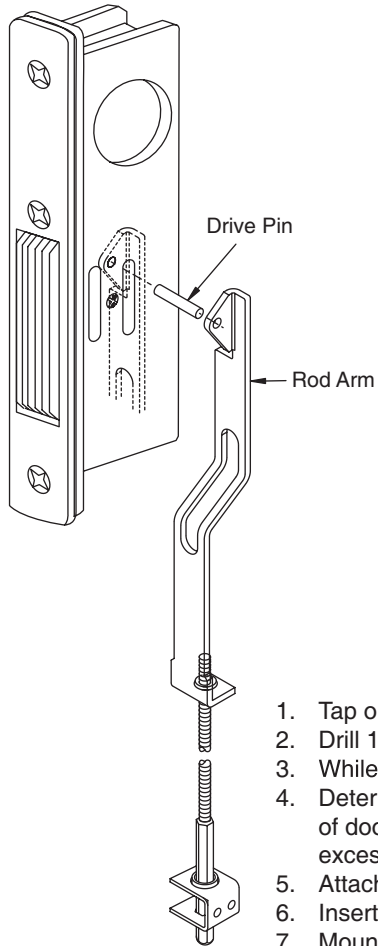


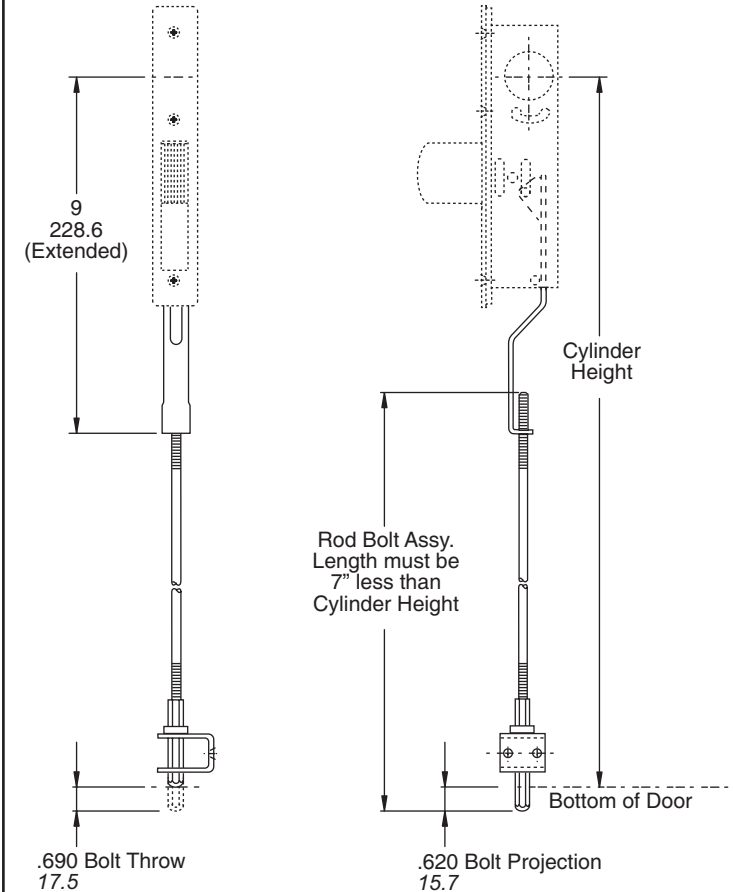
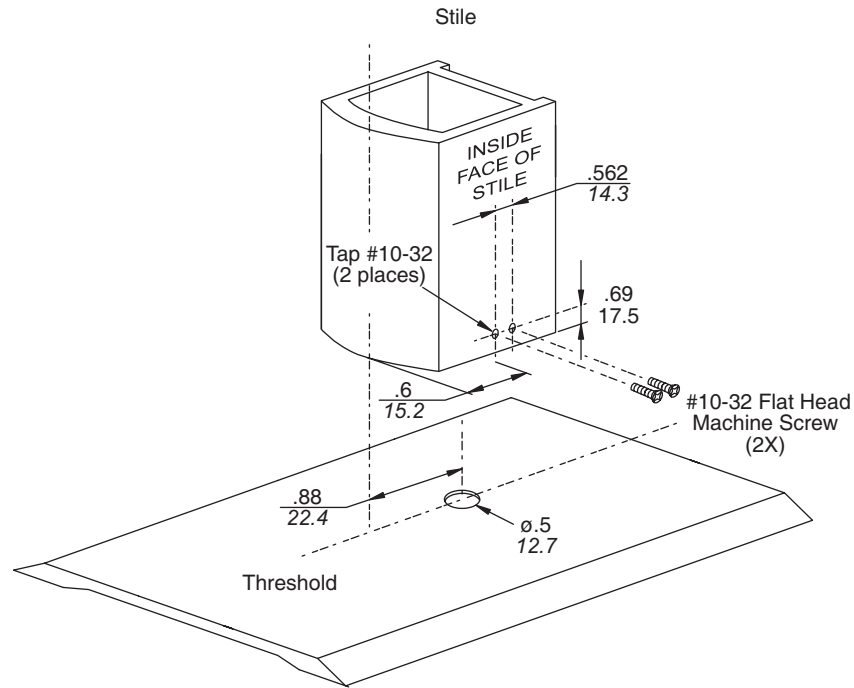
INSTALLATION



1. Tap or drill holes on bottom inside face of the stile as shown.
2. Drill 1/2" bolt hole in threshold.
3. While the lock bolt is retracted, use the drive pin to fix the rod arm to the lock.
4. Determine the cylinder heights (distance between center of cylinder and bottom of door) and subtract 7" to get the required length of the rod with the bolt. Cut the excess length from threaded portion of the rod.
5. Attach the rod to the rod arm.
6. Insert lock installed with threshold bolt into the stile.
7. Mount bottom guide and fasten securely.

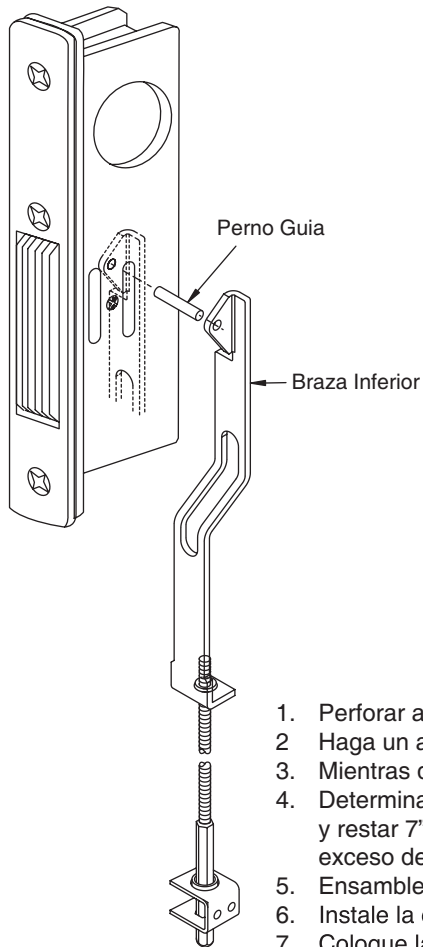
DIMENSIONS

Inches
Millimeters



- Cut off the length of rod bolt assy. to suit low cylinder heights

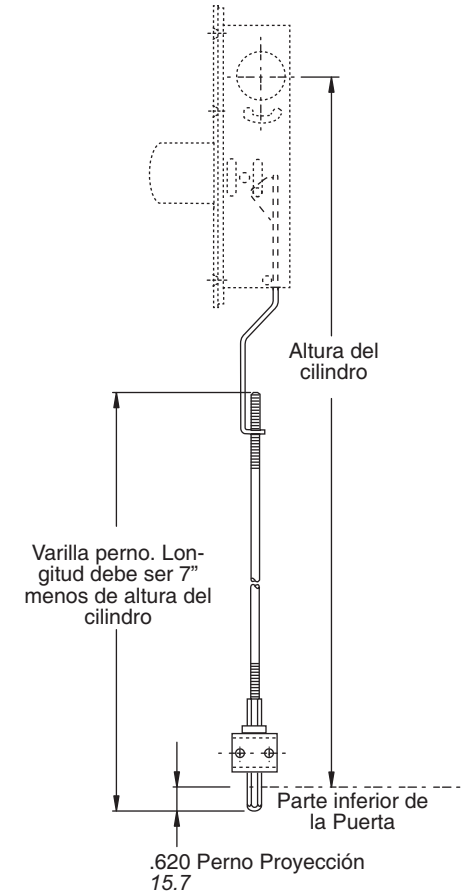
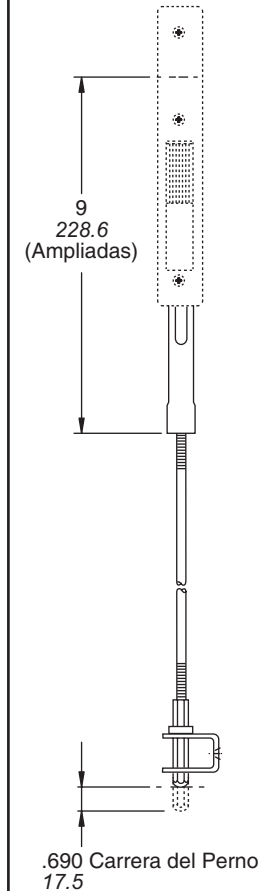
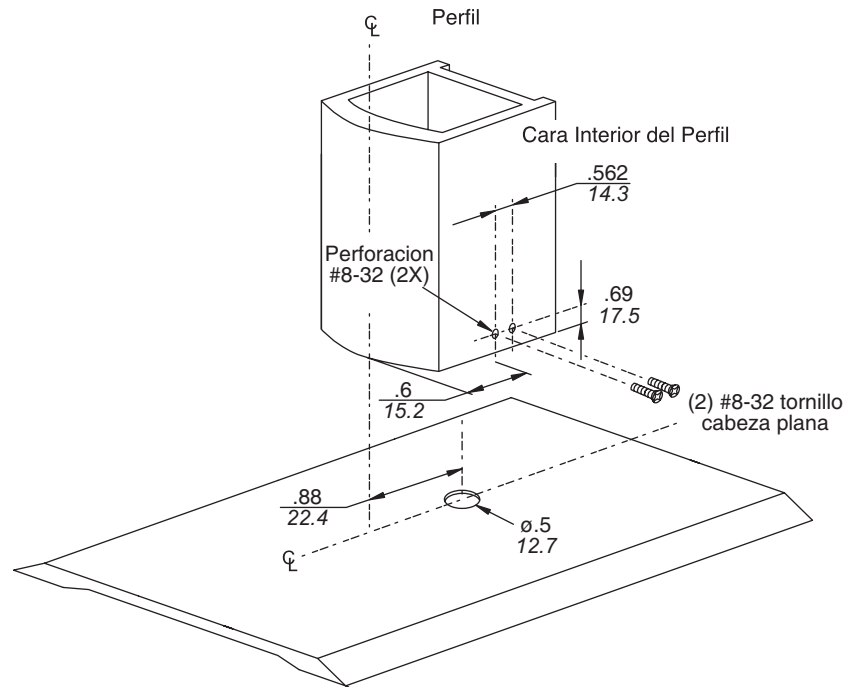
INSTALACIÓN



1. Perforar agujeros en la parte inferior de la cara interior comose muestra
2. Haga un a Perforacion de 1/2" en el marco inferior.
3. Mientras que el pestillo se retrae usar el perno guia para colocar el pasador inferior.
4. Determinar cilindro altura del (distancia entre el centro del cilindro y al pie de lapuerta) y restar 7" para obtener la longitud necesaria de la varilla con el tornillo. Cortar el exceso de longitud de la varilla de la parte rascenda.
5. Ensamble el braza y el pasador inferior.
6. Instale la cerradura en el perfil.
7. Coloque laguia inferior y sujete firmemente.

DIMENSIONES

Pulgadas
Milímetros



- Cortar la longitud de la varilla perno para satisfacer alturas del cilindro