

4010T Series



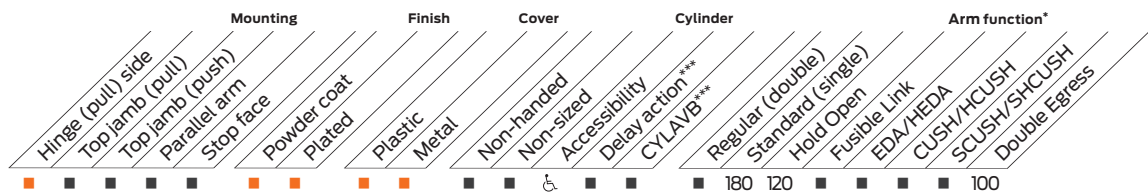
The 4010T is LCN's best performing heavy duty track closer designed specifically for interior doors in institutional and other rugged high traffic applications.

Features

Certifications	Grade 1 - ANSI A156.4, UL 10C, ADA, 100 hour salt spray, meets BAA - Buy American Act	Cover	<ul style="list-style-type: none"> Plastic Cover (PC), standard Metal Cover (MC), optional
Body construction	<ul style="list-style-type: none"> Cast iron body Full complement bearing 1 1/2" diameter piston 1/16" diameter double heat treated pinion journal 	Fasteners	Self Reaming and Tapping Screws (SRT)
Fluid	All weather fluid	Mounting	Hinge (Pull side)
Handing	Handed	Arms	Standard arm and track with roller
Templating	Peel-n-Stick templates - 2 1/2" x 6" mounting hole pattern	Finishes/colors/ powder coat	<ul style="list-style-type: none"> 622 Matte black 689 Aluminum 690 Statuary Bronze 691 Light Bronze 693 Black 695 Dark Bronze 696 Brass Custom colors optional
Size	Sized 1, 3 or 4		<ul style="list-style-type: none"> Optional SRI primer - powder coat only Optional plated finishes
Warranty	30 years		

Special templates

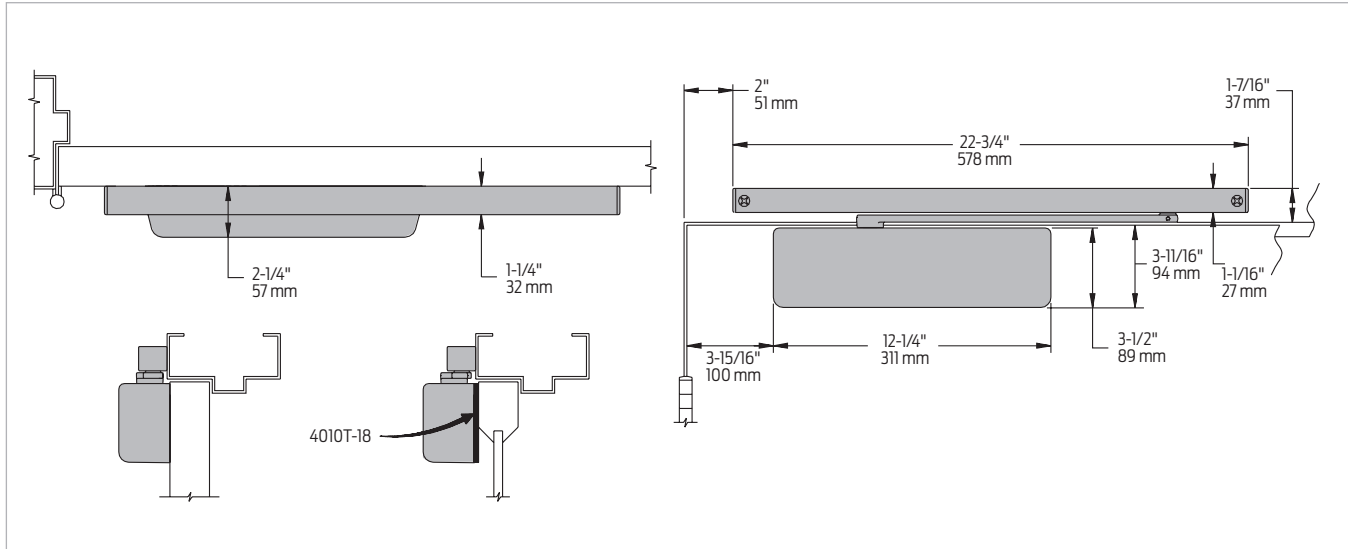
Customized installation templates or products may be available to solve non-standard applications. Contact LCN Product Support for assistance.



♿ Closer available with less than 5.0 lbs. opening force on 36" door.
 * Maximum opening/hold open point with standard template.
 ** Advanced Variable Back Check.
 *** Delay action for 4040XP incorporates standard 4041 cylinder.

Mounting details

Hinge (pull) side mounting



Butt hinges	Should not exceed 5" (127 mm) in width
Auxiliary stop	Recommended at hold open point or where a door cannot swing 180°
Reveal	<ul style="list-style-type: none"> Should not exceed 1/8" (3 mm) for Standard Arm Should not exceed 3 5/16" (84 mm) for Double Egress Arm
Top rail	Less than 3 3/4" (95 mm) requires plate, 4010T-18
Head frame	Requires 1 1/2" (38 mm) minimum
Clearance	2 1/4" (57 mm) behind door required for 90° or 180° installation
Maximum opening	<ul style="list-style-type: none"> Templating allows 180° with Standard Arm, limited to 120° when optional bumper is installed Consult factory if door will be held open at 180° Variable hold open angles with infinite options

Notes:

- Optional track bumper assembly assists backcheck in cushioning the opening swing of the door. It is not intended to replace an auxiliary stop.
- Plate requires 2" (51 mm) minimum.

Accessories

Cylinders

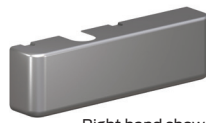


- 4011T(3)(4)-3071
Cast iron cylinder
assembly (CYL)**
- Handed
 - Standard

Covers



- 4010T-72
Plastic Cover (PC)**
- Non-handed
 - Standard



Right hand shown

- 4010T-72MC
Metal Cover (MC)**
- Handed
 - Required for plated finishes and custom powder coat finishes
 - Optional

Arms



- 4010T-3077T
Standard Arm
(STDTRKARM)**
- Handed
 - Does not include track roller



- 4010T-3077DE
Double Egress Arm
(DE)**
- Handed
 - For double egress doors and frames
 - Does not include track roller
 - Maximum reveal is 3 5/16" (84mm)
 - Optional

Tracks



- 4010T-3038
Standard Track (STDTRK)**
- Non-handed
 - Non hold open
 - Will accept hold open clip and/or bumper assembly
 - Standard



- 4010T-3038B
Track with Bumper (BUMP)**
- Non-handed
 - Non hold open
 - With bumper assembly installed
 - Will accept hold open clip
 - Optional



- 4010T-3038H
Hold Open Track (H)**
- Non handed
 - With hold open clip installed
 - Will accept bumper assembly
 - Optional

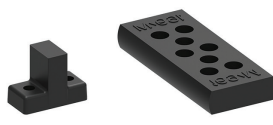


- 4010T-3038HB
Hold Open Track with
Bumper (HBMP)**
- Non-handed
 - With hold open clip and bumper assembly installed
 - Optional

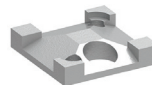
Installation accessories



- 4010T-18
Plate**
- Required where top rail is less than 3 3/4" (95 mm)
 - Requires minimum 2" (51 mm) top rail



- 4010T-169
Track bumper**
- Mounts in track to assist back check, does not replace auxiliary stop
 - Limits maximum opening
 - Consists of bumper, bumper post, and mounting screw



- 4010T-3054
Hold open clip**
- Mounts in track to provide hold open function
 - Hold open point controlled by clip location
 - Consists of clip and mounting screws
 - Requires 4010T-3034H Track Roller



- 4010T-3034
Track roller**
- Quiet, low friction roller assembly
 - Shoulder dimension "X" = 1/16" (2mm)



- 4010T-3034H
Track roller**
- Quiet, low friction roller assembly
 - Shoulder dimension "X" = 1/16" (2mm)
 - Spring-loaded hold open mechanism