

4010 Series



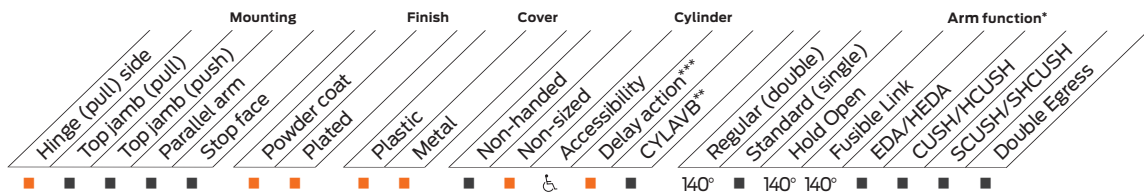
The 4010 is LCN's best performing heavy duty closer designed specifically for institutional and other rugged high traffic applications.

Features

Certifications	Grade 1 - ANSI A156.4, UL 10C, ADA, 100 hour salt spray, meets BAA - Buy American Act	Cover	<ul style="list-style-type: none"> Plastic Cover (PC), standard Metal Cover (MC), optional
Body construction	<ul style="list-style-type: none"> Cast iron body Full complement bearing 1 1/2" diameter piston 1/16" diameter double heat treated pinion journal 	Fasteners	Self Reaming and Tapping Screws (SRT)
Fluid	All weather fluid	Mounting	Hinge (Pull side)
Handing	Handed	Arms	Regular arm
Templating	Peel-n-Stick templates - 2 1/2" x 6" mounting hole pattern	Finishes/colors/ powder coat	<ul style="list-style-type: none"> 622 Matte black 689 Aluminum 690 Statuary bronze 691 Light bronze 693 Black 695 Dark bronze 696 Brass Custom colors optional
Size	Adjustable 1-5 or sized 6		<ul style="list-style-type: none"> Optional SRI primer - powder coat only Optional plated finishes
Warranty	30 years		

Special templates

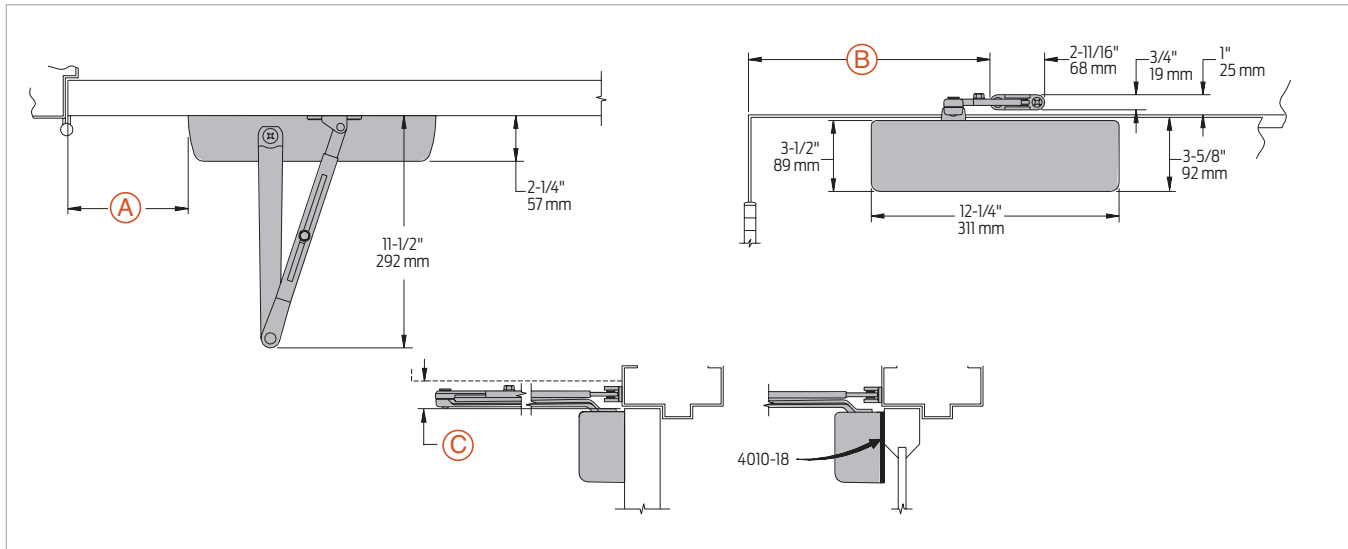
Customized installation templates or products may be available to solve non-standard applications. Contact LCN Product Support for assistance.



■ Available
■ Not available
 Closer available with less than 5.0 lbs. opening force on 36" door.
 * Maximum opening/hold open point with standard template.
 ** Advanced Variable Back Check.
 *** Delay action for 4040XP incorporates standard 4041 cylinder.

Mounting details

Hinge (pull) side mounting



Butt hinges	Should not exceed 5" (127 mm) in width
Auxiliary stop	Recommended at hold open point or where a door cannot swing 140°
Reveal	Should not exceed 3/4" (19 mm). Should not exceed 1/8" (3 mm) for Fusible Link Arm
Top rail	<ul style="list-style-type: none"> Less than 3 3/4" (95 mm) requires plate, 4010-18 Plate requires 2" (51 mm) minimum Clearance of 2 1/4" (57 mm) behind door required for 90° installation
Delay action	<ul style="list-style-type: none"> Add suffix "CYLDEL" to selected cylinder Not available with 4016 cylinder Delays closing from maximum opening to approximately 70° Delay time adjustable up to approximately 1 minute
Maximum opening	Can be templated for: 100°: A = 5 15/16" (151 mm) 140°: A = 4 3/16" (106 mm) B = 11 15/16" (303 mm) B = 10 3/16" (259 mm)
	Hold open points up to maximum opening with Hold Open Arm
Arm clearance	Regular Arm: C = 1 1/16" (27 mm) Hold Open Arm: C = 1 3/8" (35 mm) Fusible Link Arm requires: C = 1 5/8" (41 mm)

Note: Hold open points up to maximum opening with Hold Open Arm.

4010/4010T Series

Accessories

Cylinders

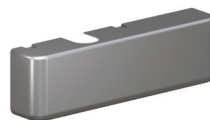

**4011(6)-3071
Cast iron cylinder
assembly (CYL)**

- Handed
- Standard

Covers


**4010-72
Plastic Cover (PC)**

- Non-handed



Right hand shown

**4010-72MC
Metal Cover (MC)**

- Handed
- Required for plated finishes and custom powder coat finishes
- Optional

Arms


**4010-3077
Regular Arm (REGARM)**

- Non-handed


**4010-3049
Hold Open Arm (H)**

- Handed
- Provides hold open function, adjustable at elbow
- Optional


**4010-3049FL
Fusible Link Arm (FL)**

- Handed
- Releases hold-open function when exposed to temperatures above 165° F; 1/8" (3 mm) maximum reveal
- Optional

Note: Check local codes before specifying FL arms.
NOT A life safety product!

Installation accessories


**4010-18
Plate**

- Required where top rail is less than 3 3/4" (95 mm)
- Requires minimum 2" (51 mm) top rail