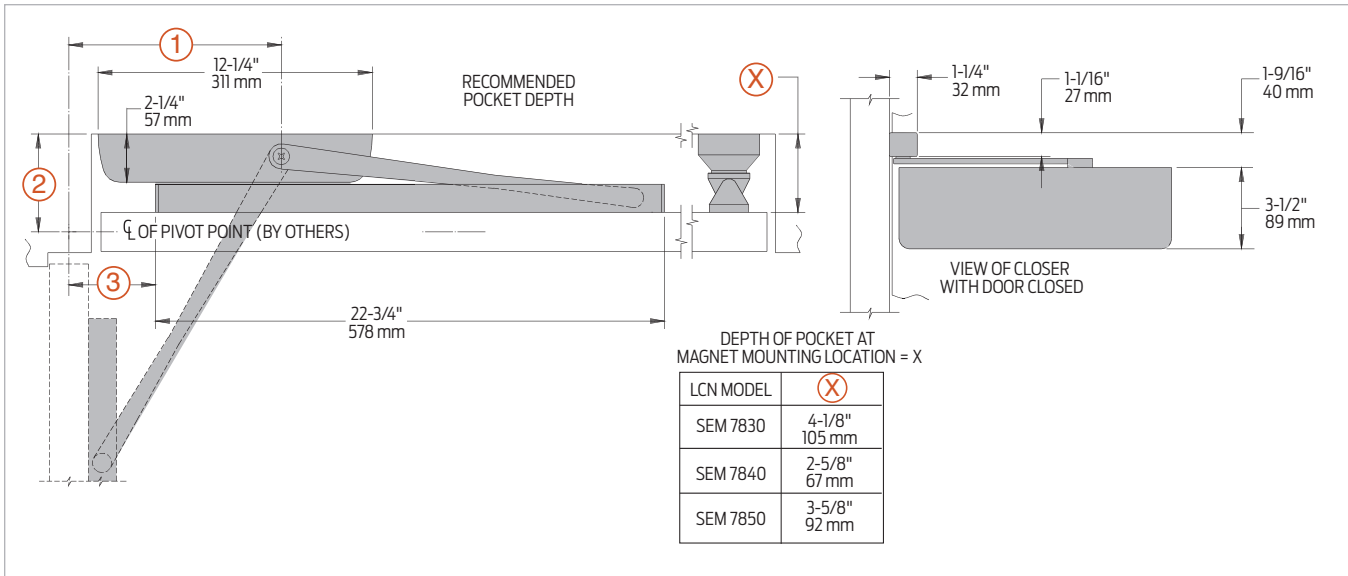


Mounting details

Wall pocket mounting



Butt hinges	<ul style="list-style-type: none"> ▪ Pocket pivot, total door hinge or center pivot are door mounting options ▪ Should not exceed 5" (127 mm)
Pocket depth	<ul style="list-style-type: none"> ▪ See above table for distance required between door and closer mounting location ▪ This dimension is measured from the cylinder mounting surface to the pull side face of the door at 90°
Wall magnet	<ul style="list-style-type: none"> ▪ SEM 7850 is recommended; use of other magnets may require special construction to alter the depth of the pocket at the magnet location ▪ See Fire Life Safety catalog
Dimension 1	<ul style="list-style-type: none"> ▪ The distance from the centerline of the closer shaft to the centerline of the hinge or pivot ▪ For pocket pivot or total door hinge, 9 1/2" (241 mm) ▪ For butt hinge 8" (203 mm) ▪ For center pivot 10" (254 mm)
Dimension 2	<ul style="list-style-type: none"> ▪ The distance from the centerline of the pivot or hinge to the cylinder mounting surface ▪ For pocket pivot 4 1/2" (114 mm) ▪ For total door hinge 3 7/8" (98mm) ▪ For butt hinge 2 7/8" (73 mm) ▪ For center pivot 4 1/2" (114 mm)
Dimension 3	<ul style="list-style-type: none"> ▪ The distance from the centerline of the pivot or hinge to end of the track ▪ For pocket pivot or total door hinge, 3 7/8" (98mm) ▪ For butt hinge 2 3/8" (60mm) ▪ For center pivot 4 5/8" (117mm)
Maximum opening	<ul style="list-style-type: none"> ▪ Templating allows 90° only ▪ Hold open point 90° with magnet

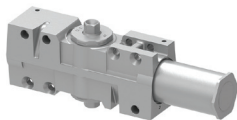
Notes:

- Cylinder mounts on wall
- Track mounts on hinge side of door

4000/4000T Series

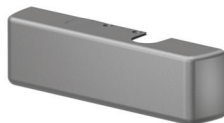
Accessories

Cylinders

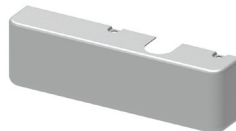

4003(4)T-3071
Cast iron cylinder assembly (CYL)

- Non-handed
- Standard

Covers

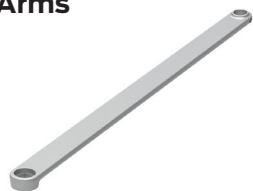

4000T-72
Plastic Cover (PC)

- Non-handed


4000T-72MC
Metal Cover (MC)

- Handed
- Required for plated finishes and custom powder coat finishes
- Optional

Arms


4000T-3077T
Standard Arm (STDTRKARM)

- Non-handed
- Roller not included with arm

Tracks


4000T-3038
Standard Track (STDTRK)

- Non-handed
- Non hold open
- Will not accept hold open clip or bumper assembly
- Standard


4000T-3034
Track roller

- Quiet, low friction roller assembly
- Shoulder dimension "X" = 1/8" (3 mm)