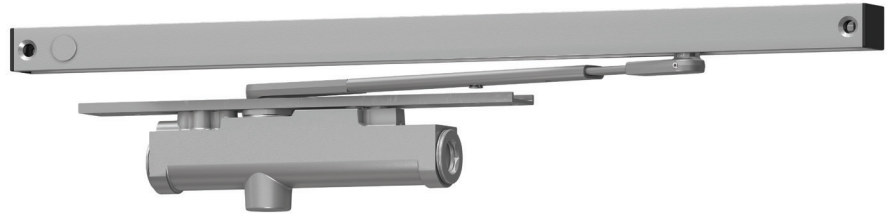


3130SE Series

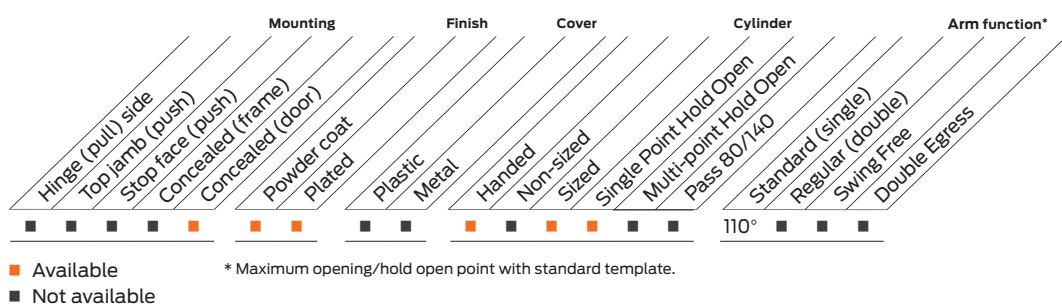


The 3130SE SENTRONIC® is a concealed in the door, closer/holder designed to provide single point hold open for fire and smoke barrier doors. Door is held open until current interruption releases the holding mechanism and the door closes.

Features

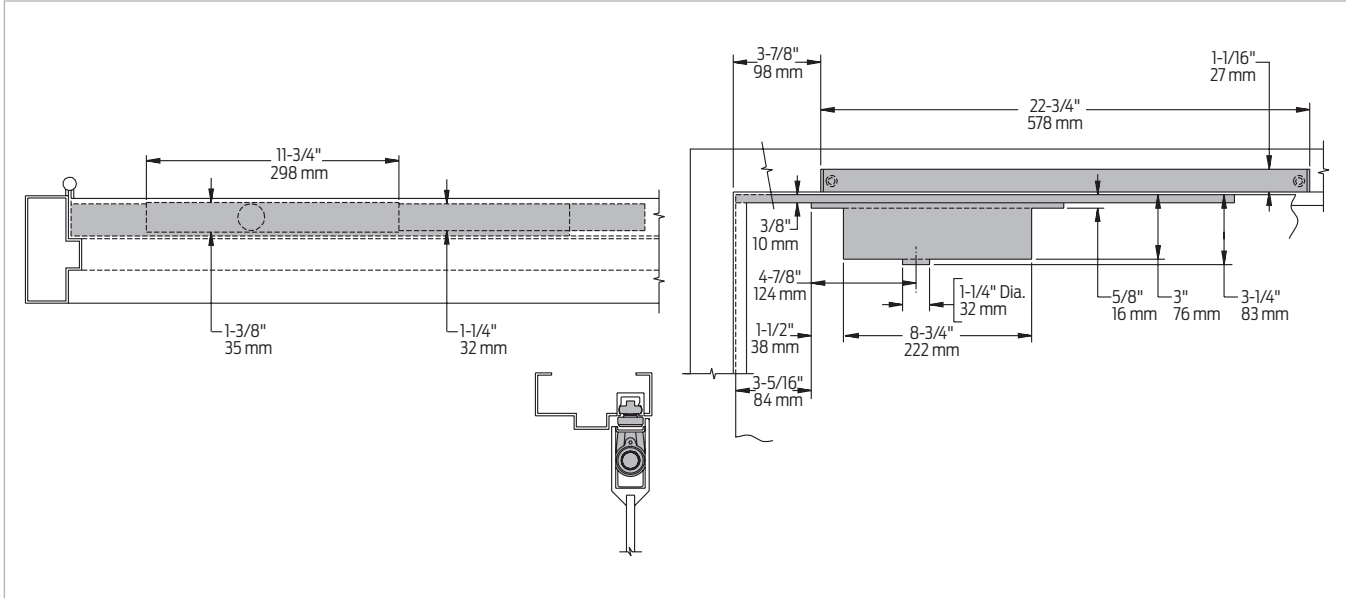
Certifications	Grade 1 - ANSI A156.15, UL/for metal smoke barrier or labeled door, Life Safety Code, NFPA 101, 100 Hour Salt Spray, meets BAA - Buy American Act	Fasteners	Wood and Machine Screws (WMS)
Body construction	<ul style="list-style-type: none"> ■ Cast iron body ■ Full complement bearing ■ 1 1/8" Diameter piston ■ 9/16" diameter double heat treated pinion journal 	Mounting	Concealed (in door) for interior smoke barrier and labeled doors
Handing	Handed	Arms	Standard, handed arm and non-handed track
Size	Size 3 or 4, non-adjustable	Finishes/colors/ powder coat	<ul style="list-style-type: none"> ■ 689 Aluminum paint ■ 690 Statuary Bronze paint ■ 691 Light Bronze paint ■ 693 Black paint ■ 695 Dark Bronze paint ■ 696 Brass paint ■ Custom colors optional
Warranty	2 years		<ul style="list-style-type: none"> ■ Optional SRI primer - powder coat only ■ Optional plated finishes

Special templates | Customized installation templates or products may be available to solve non-standard applications. Contact LCN Product Support for assistance.



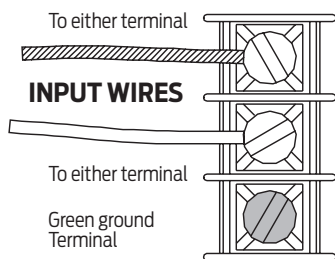
Mounting details

Concealed mounting



Butt hinges	<ul style="list-style-type: none"> Should not exceed 5" (127 mm) in width Consult factory for pivot hung installations
Auxiliary stop	Recommended at hold open point
Top rail	Minimum 4" (102 mm)
Door thickness	<ul style="list-style-type: none"> 1 3/4" (44 mm) minimum Please consult the door manufacturer to assure that the door integrity and warranty is maintained after installing the 3130SE Series door closer in 1 3/4" (44 mm) thickness wood doors
Door width	<ul style="list-style-type: none"> 2'4" (711 mm) minimum for single door with SE 2'8" (813 mm) minimum for door with SEL
Maximum opening	<ul style="list-style-type: none"> Templating allows 110° Hold open points between 85° and 110° in approximately 3° increments SEL arm and track locate hold open at 110°, 120° and 130°
SE, SEL electrical options	<ul style="list-style-type: none"> These track assemblies require a single power circuit for the holding solenoid SE or SEL holding solenoid is either 24V or 120V input, please specify An optional 4040SE-3210 or 8310-824 transformer reduces 120V AC line voltage to 24V AC Circuitry accepts either AC or DC input
Options	<ul style="list-style-type: none"> Long (SEL) Track and Arm 24V or 120V input, please specify

SE wiring diagram



- For interior smoke barrier and labeled fire doors
- Functions as full rack and pinion door closer when hold open is not engaged or current is interrupted
- Interfaces with fire alarm system

Accessories

Cylinder



- 3130SE-3071**
Cast iron cylinder assembly (CYL)
- Handed
 - Cast iron
 - Standard

Arms

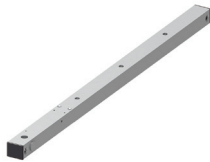


- 3130SE-3077T**
Standard Arm (STDTRKARM)
- Handed
 - Adjustable to select hold open point
 - Standard



- 3130SEL-3077T**
Long Arm (LONG)
- Handed
 - Provides hold open point from 110° to 130°, determined by track templating
 - Used with SEL TRACK 3130SEL-3038 only
 - Option

Tracks

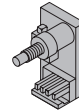


- 3130SE-3038**
Standard Track (STDTRK)
- Non-handed
 - Circuitry accepts either AC or DC input
 - 24V holding solenoid (24) or 120V holding solenoid (120), please specify
 - Standard



- 3130SEL-3038**
Long Track (LONG)
- Non-handed
 - Used with Long Arm, 3130SEL-3077T, only
 - Provides hold open point from 110° to 130°, determined by templating. Circuitry accepts either AC or DC input
 - 24V holding solenoid (24) or 120V holding solenoid (120), please specify
 - Optional

Switch



- 3130SE-3436**
Test Switch

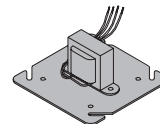
Installation accessories



- 3130SE-81**
Conduit Quick-Connector
- Two piece connector for use with 1/2" conduit



- 3130SE-3034SE**
Track Roller and Track Slider
- Quiet, low friction roller assembly
 - Shoulder dimension "X" = 1/8" (3 mm)
 - Alloy metal slider for use in SE Series tracks only



- 4040SE-3210**
Transformer
- Reduces line voltage from 120V to 24V AC
 - Mounted on plate for 4" (102 mm) x 4" x 2 1/8" (54 mm) junction box (by others)