

2610 Series



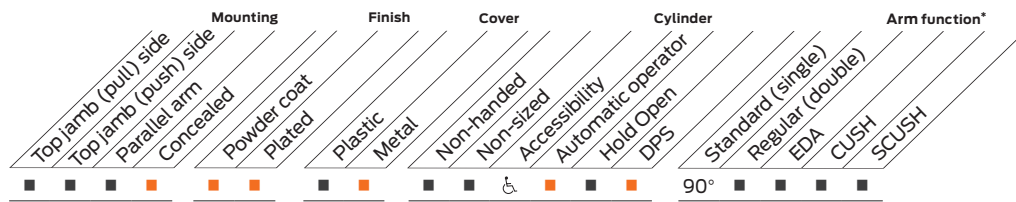
The 2610 Auto Equalizer™ is LCN's pneumatically powered multi-door solution. This low-energy automatic operator provides easy access for people with disabilities, or the elderly. Designed primarily for manual opening applications that occasionally require automatic opening.

Features

Certifications	ADA, 100 Hour Salt Spray, Meets BAA - Buy American Act	Mounting	Concealed in frame
Body construction	<ul style="list-style-type: none"> Cast iron body Full complement bearing 1 1/2" diameter piston 1/16" diameter double heat treated pinion journal 	Arms	Single lever arm, mounting/finish plate, standard track
Fluid	All weather fluid	Finishes/colors/powder coat	<ul style="list-style-type: none"> 689 Aluminum 690 Statuary Bronze 691 Light Bronze 693 Black 695 Dark Bronze 696 Brass Custom colors optional Optional SRI primer - powder coat only Optional plated finishes
Handing	Handed		
Size	Sized 3 and 4		
Warranty	2 years		
Fasteners	Wood and Machine Screws (WMS)		

Special templates

Customized installation templates or products may be available to solve non-standard applications. Contact LCN Product Support for assistance.

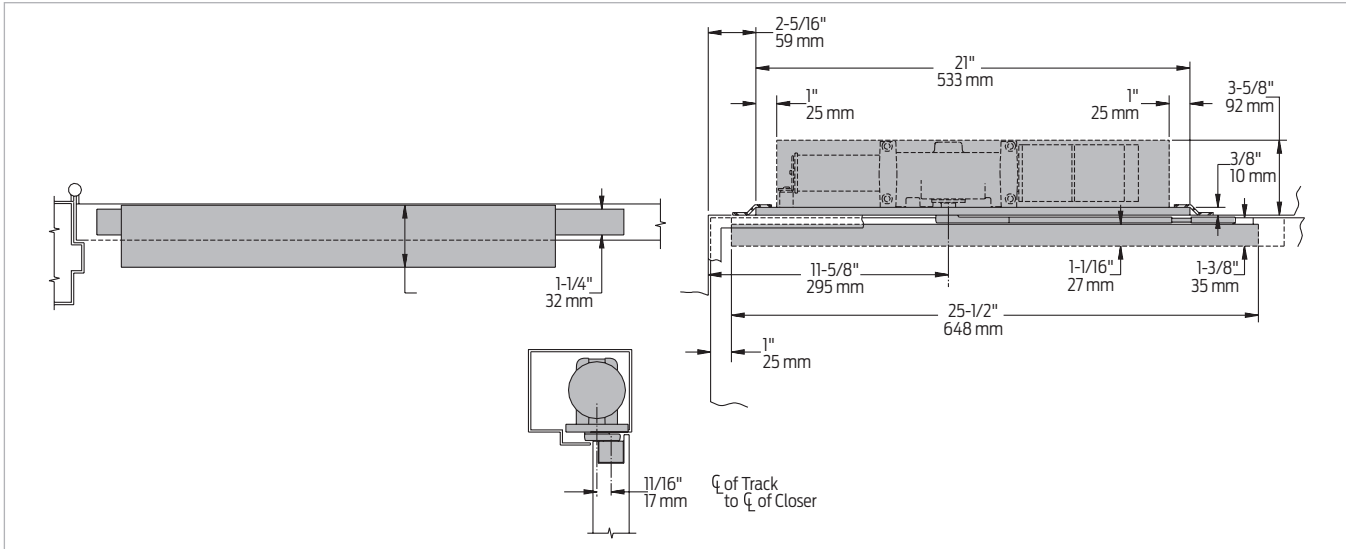


■ Available
 ■ Not available

♿ Meets ADA requirements (power mode).
 * See individual series for maximum manual opening.

Mounting details

Concealed mounting



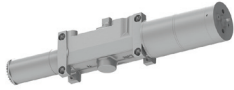
Butt hinges	Should not exceed 5" (127 mm) in width
Auxiliary stop	Recommended
Top rail	<ul style="list-style-type: none"> 1 3/8" (35 mm) mortise required 5/16" (8 mm) cutout required at top of the door, push side only
Head frame	Minimum 4" (102 mm) x 4" for hollow metal or aluminum tube construction
System diagram	See pages 9-10 for typical system wiring, and pages 28-29 for electrical and pneumatic data for control boxes
Maximum opening	<ul style="list-style-type: none"> Butt hinge template allows 90° power opening and 160° manual opening Please note that many track style door closers are capable of allowing 180° of door swing Track style closers are at their weakest closing force at 180° Consult factory for applications where exterior or large/heavy door must swing 180° Consult factory for all pivot mounted installations

Notes:

- For interior or exterior doors
- Single acting cylinder in head frame
- Concealed arm and track in door top rail
- Requires control box with integral compressor or control box using auxiliary air supply (see control box pages 28-29 and actuators and accessories, pages 100-117)
- Guard rails/safety mats not required

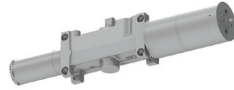
Accessories

Cylinders



2610-3971
Cast Iron Cylinder
Assembly (CYL)

- Handed
- Standard



2610-3971 DPS
Cast Iron Cylinder Assembly
(CYL)

- Handed
- With Door Position Switch (DPS) which sends signal when door is closed
- Standard



2610-3071
Cast Iron Cylinder
Assembly (CYL)

- Handed
- Mounting plate
- Standard



2610-3071 DPS
Cast Iron Cylinder Assembly
(CYL)

- Handed
- Mounting plate with Door Position Switch (DPS) which sends signal when door is closed
- Standard

Arms



2610-3077T
Standard Arm (STDTRKARM)

- Handed
- Track roller not included with arm

Tracks



2610-3038
Standard Track (STDTRK)

- Non-handed
- Standard

Installation accessories



2610-3034
Track roller

- Quiet, low friction roller assembly
- Shoulder dimension "X" = 1/16" (2 mm)