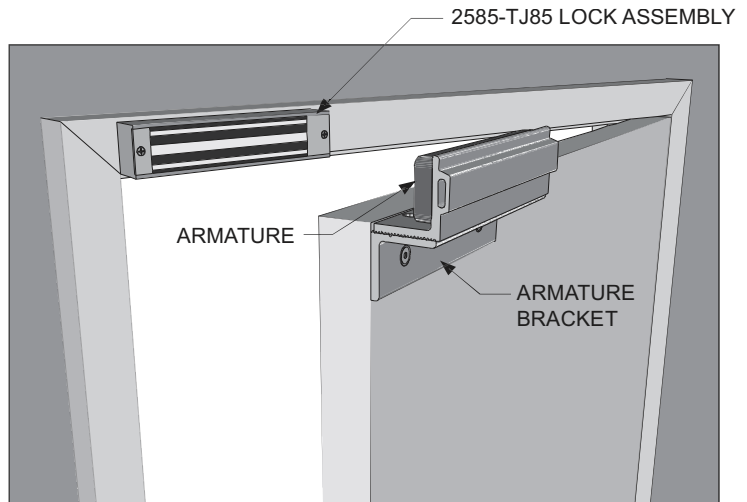


INSTALLATION DESCRIPTION

The Series 2585xTJ85 is a 650 pound holding force top jamb mounted electromagnetic lock, designed to secure a single inswinging door. The lock requires installation procedures as described herein and in the separate wiring instructions included.

Typical installation of the lock on a LH single inswinging door:



HANDLING

Care must be taken that the lock face and armature face are kept free of dirt, rust, paint, or any other obstruction which may interfere with the lock and armature making good contact. These faces may be cleaned with a non-abrasive pad and wiped with an oil dampened cloth.

MECHANICAL INSTALLATION

Familiarize yourself with the door and frame conditions. The lock must mount rigidly to the face of the door frame header. The door mounted armature is supplied with an adjustable mounting bracket and hardware that allows it to pivot slightly to compensate for reasonable misalignment.

NOTE: If this lock is supplied with the DSM option be certain that disc magnets are present inside the armature housing.

ELECTRICAL INSTALLATION

After mechanical installation is complete the lock needs to be wired to a 12 or 24 VDC power source. Once low voltage power is supplied the unit is fully operational. All other wiring is for selected options. Refer to the separate wiring instructions included for further information.

TABLE OF CONTENTS

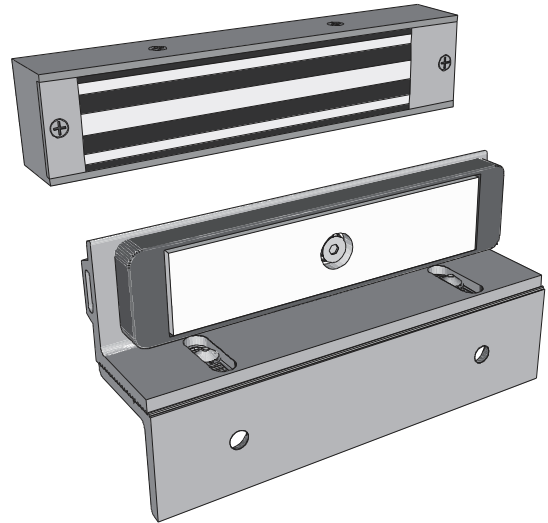
General Information.....	1
Bill Of Materials.....	2
Mounting Considerations.....	3
Install Lock Mounting Bracket.....	3
Assemble Armature Mtg. Bracket.....	4
Install Armature Mtg. Bracket.....	5
Armature Mtg. Bracket Adjustment.....	6
Exploded Parts View.....	7
Exploded Parts Legend.....	8
Support.....	8

REQUIRED TOOLS

- (1) Electric Drill
- (1) #2 Phillips Screw Driver
- (1) Soft Faced Mallet
- (1) Hammer
- (1) Center Punch
- (1) Pencil & Tape

Drill Bits: 1/8", 17/64", 11/32", 1/2", 9/16", 21/32"

MODEL #2585xTJ85 BILL OF MATERIALS



- (1) 2585xTJ85 LOCK ASSEMBLY
- (1) ARMATURE
- (1) ARMATURE HOUSING
- (1) ARMATURE MTG BRACKET SET
- (1) HARDWARE KIT
- (1) MOUNTING TEMPLATE DRAWING
- (1) INSTALLATION MANUAL
- (1) WIRING MANUAL

HARDWARE KIT CONTENTS (P/N 301319)

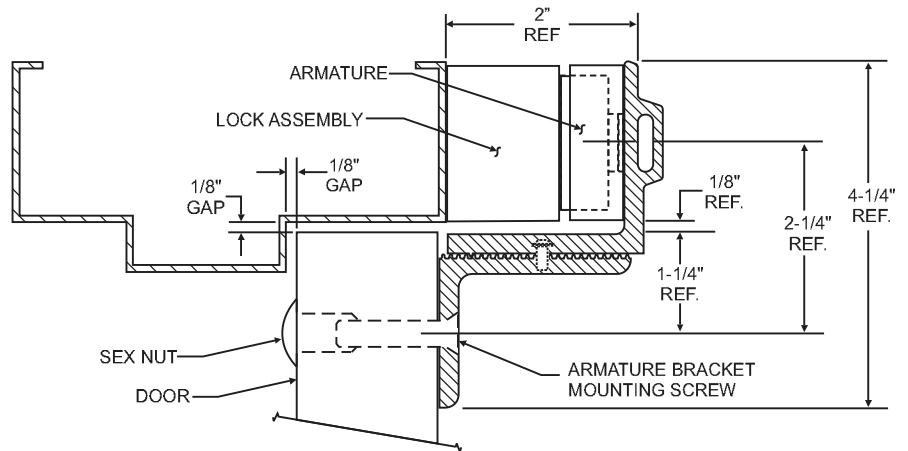
QTY.	DESCRIPTION
4	#10x1" sheet metal screw
2	5/16-18x1-3/4" TJ bracket bolt
2	8-32x3/8" machine screw
1	3/8"Dx0.235"L spacer
1	1/4" flat steel washer
2	5/8"Dx1-11/16"L spacer
2	5/16-18 sex nut

QTY.	DESCRIPTION
1	5/16-18x3/4" armature bolt
2	1/4-20x5/16" button head screw
2	lock washer
4	anti-tamper plug
1	3/16" Hex Wrench
1	5/32 Hex Wrench

NOTE: For further parts clarification refer to the Exploded Parts View on page 7 or consult factory.

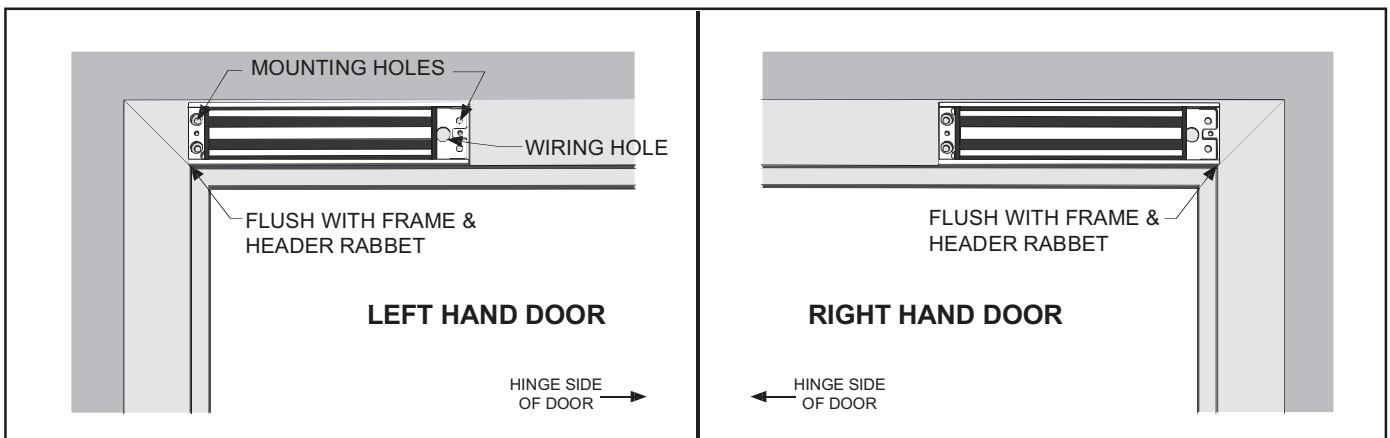
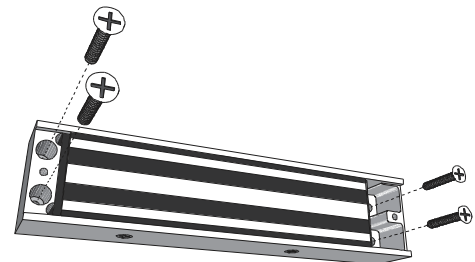
MOUNTING CONSIDERATIONS

1. Individual door and frame conditions may vary. Dimensions shown at right are for a typical hollow metal door and frame.
2. The lock assembly should be mounted closest to the strike jamb of the frame for maximum performance. Verify that there is proper clearance for the lock assembly at the planned mounting location.



INSTALL THE LOCK ASSEMBLY

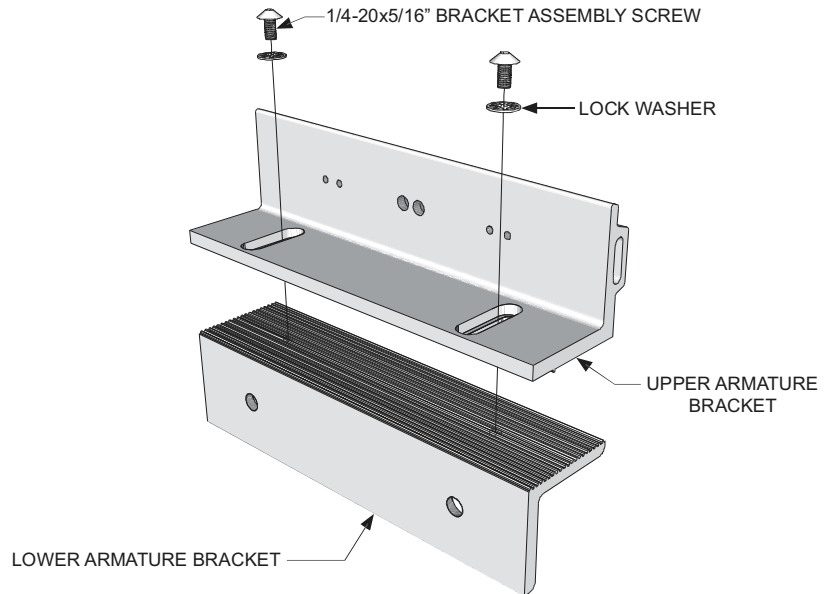
1. Position the lock assembly on the face of the frame header, on the pull side of the door, as shown. Locate and mark the centers of the four mounting holes and wiring hole.
2. Drill the marked holes in the face of the frame header:
Four (4) 1/8" dia. mounting holes, One 3/8" wiring hole
3. Attach the lock assembly to the frame header using four (4) #10 x 1" FHS sheet metal screws. Firmly tighten the screws using a #2 phillips screwdriver.



ASSEMBLE THE ARMATURE MOUNTING BRACKET

Locate the two armature mounting bracket assembly screws and lock washers from the hardware kit and assemble the bracket as shown.

Firmly tighten the mounting screws with a 5/32" hex wrench. They may be loosened later for adjustment, as necessary.

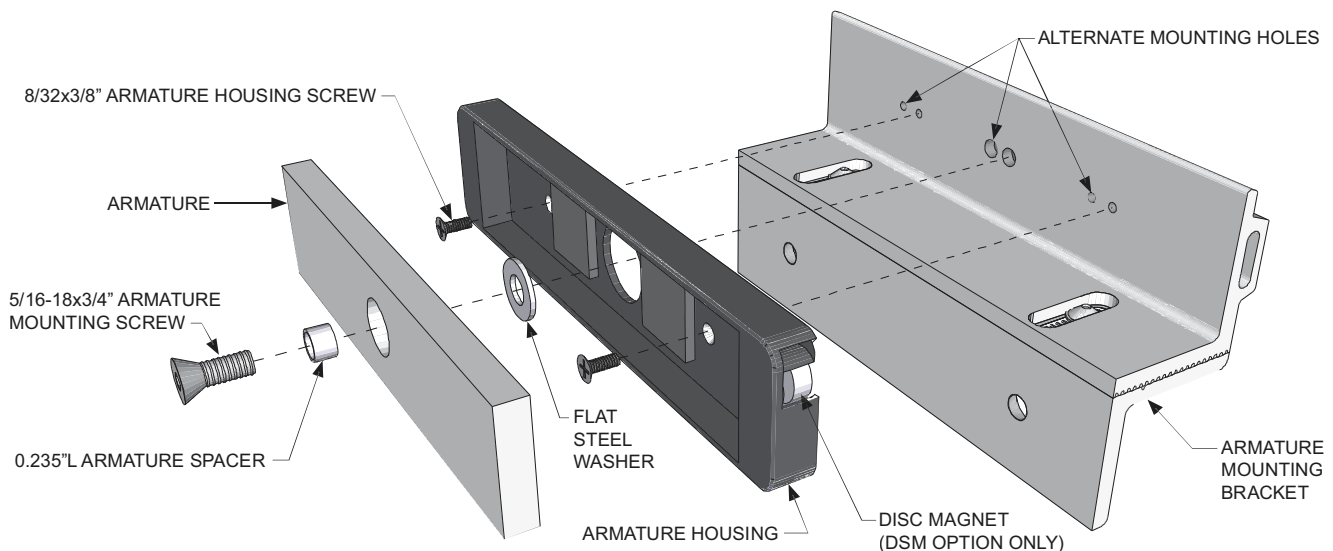


ATTACH THE ARMATURE TO THE ARMATURE MOUNTING BRACKET

Attach the Armature Housing to the top Armature Mounting Bracket using two (2) 8-32x3/8" Armature Housing Screws.

Attach the armature to the armature mounting bracket as shown. Firmly tighten the Armature Mounting Screw using a 3/16" hex wrench. Install as shown for single locks. For double locks, the right side door will require the use of the alternate mounting holes for proper handing.

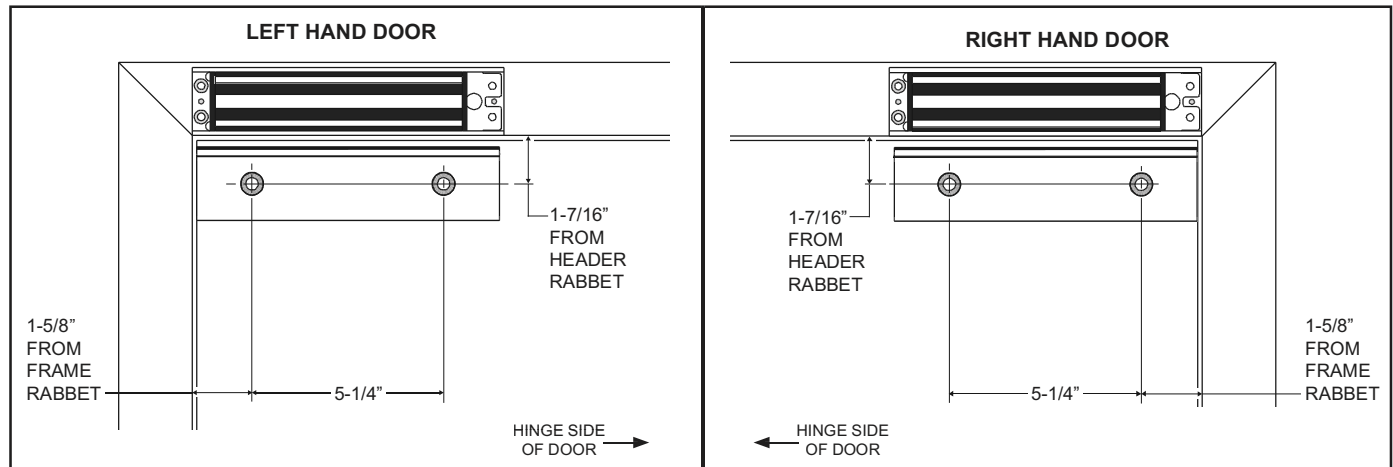
Failure to properly secure the armature to the bracket could result in serious injury or possible security breach.



INSTALL THE ARMATURE MOUNTING BRACKET

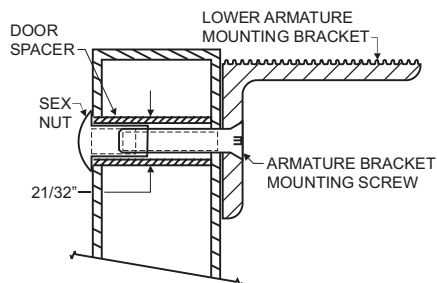
- Use the figures below to identify and mark the locations of the armature mounting bracket screw holes on the door.

Refer to door and frame prep drawing #301372 for further information.



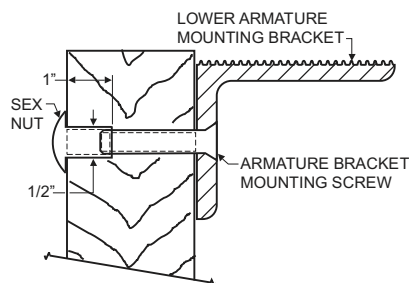
- From the illustrations below select the one that resembles your door type and follow the instructions for drilling the two (2) armature mounting bracket screw holes.

GLASS & ALUMINUM OR HOLLOW METAL DOOR



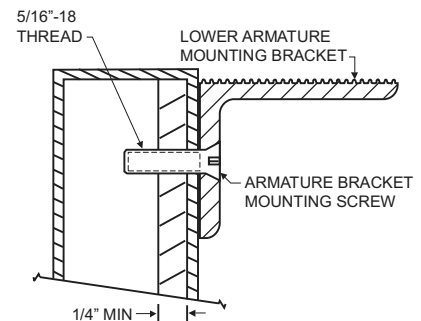
Drill an 11/32" diameter hole through door. From sex nut side only enlarge the 11/32" hole to 21/32" diameter.

SOLID CORE DOOR



Drill an 11/32" diameter hole through door. From sex nut side only drill 1/2" diameter hole to 1" depth.

REINFORCED DOOR

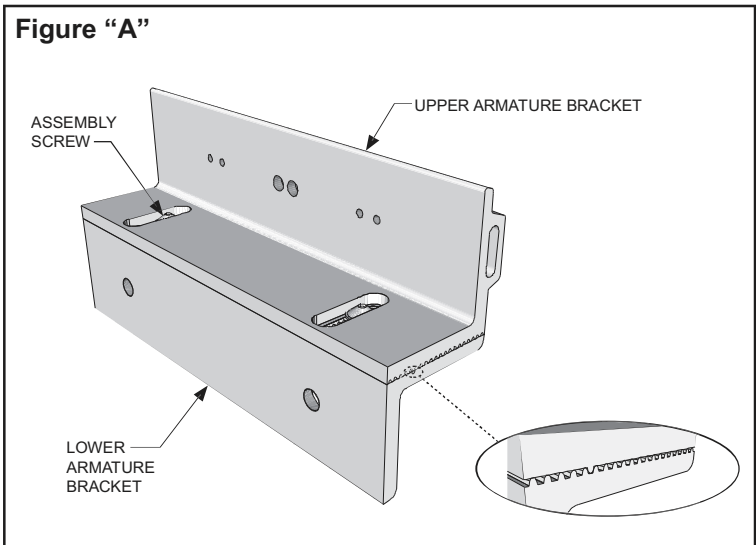


Drill an 11/64" diameter hole and tap for 5/16"-18 thread.

- Mount the armature and mounting bracket assembly to the door using the appropriate hardware for you door type. Firmly tighten the mounting screws with a 3/16" hex wrench.

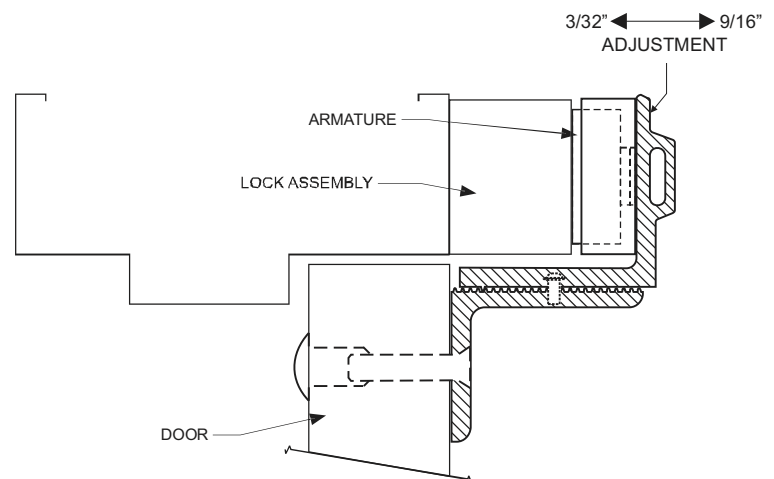
ARMATURE ADJUSTMENT

1. Using a 5/32" hex wrench, temporarily loosen the armature bracket assembly screws roughly 1-1/2 turns to allow the upper armature bracket to move in and out freely (Ref. Figure "A").
2. Close and latch the door. The mating surfaces of the lock and armature should fully contact each other. If necessary, slide the armature in or out to ensure full contact is made with the lock while still allowing the door to properly close and latch.
3. When the desired adjustment is achieved, slowly open the door taking care to maintain the position of the armature. Firmly tighten the armature bracket assembly screws, making sure that the locking ribs on the upper and lower bracket halves properly mesh (Ref. Figure "A").



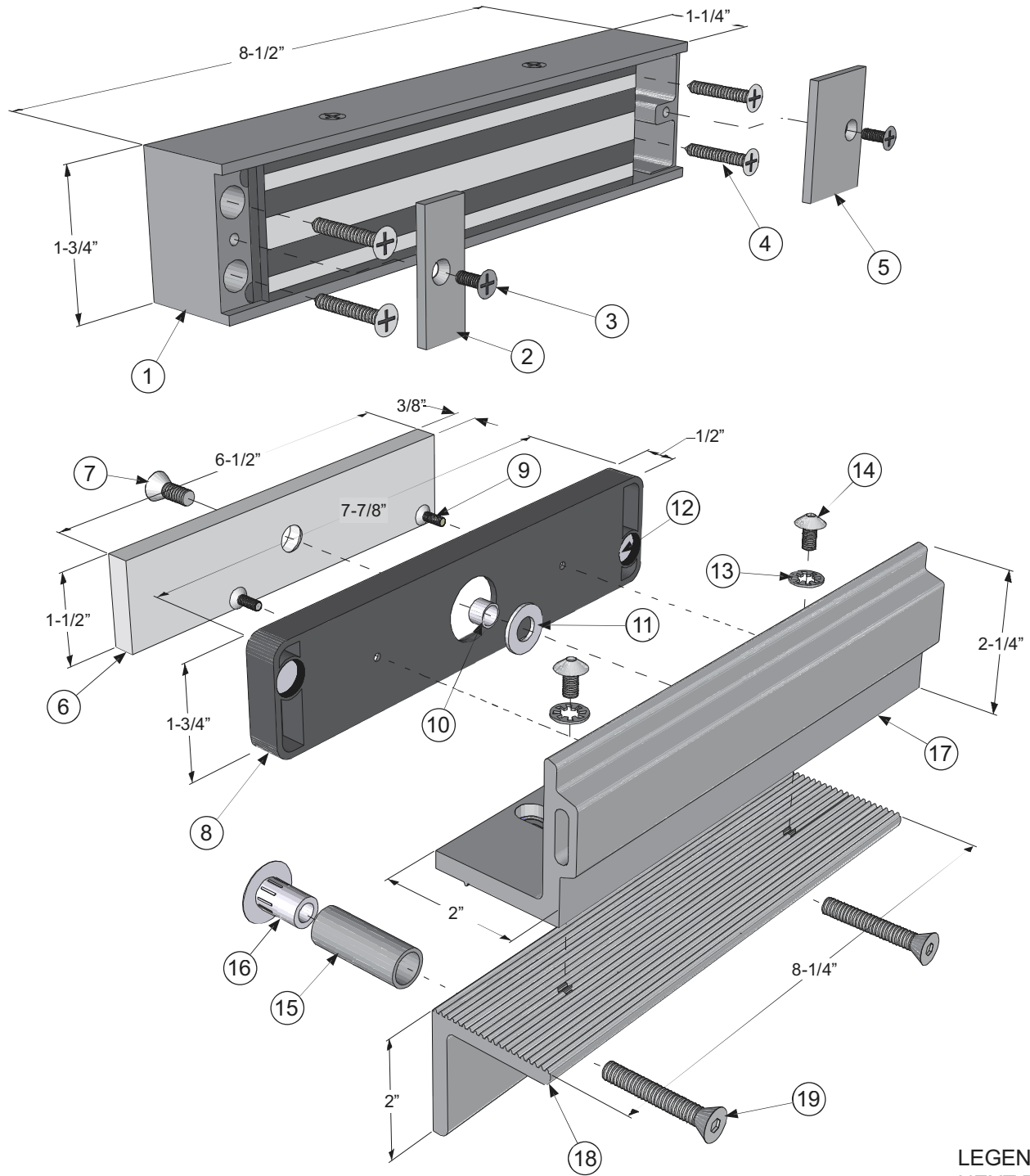
NOTE:

Make sure the door hits the frame just before the armature hits the maglock, to prevent loosening over time (armature not slamming against the lock).



**MECHANICAL INSTALLATION IS NOW COMPLETE.
REFER TO SEPARATE WIRING INSTRUCTIONS TO
COMPLETE THE ELECTRICAL INSTALLATION.**

EXPLODED PARTS VIEW



LEGEND ON
NEXT PAGE





705 Emmett Street • Bristol, CT 06010
 1-877-DynaLock • www.dynalock.com

**MODEL 2585xTJ85
 ELECTROMAGNETIC LOCK
 INSTALLATION INSTRUCTIONS**

PARTS LEGEND

ITEM	DESCRIPTION	PART #
1	Lock Housing	301266
2	End Cover	300944
3	8-32x3/8" Machine Screw	300608
4	#10x1" Self-Tapping Screw	*
5	Access Cover	300945
6	Armature	300141
7	5/16-18x3/4" Armature Screw	*
8	Armature Housing & Rubber Pads	301332
9	8-32x3/8" Machine Screw	300608
10	0.235"L Armature Spacer	*

ITEM	DESCRIPTION	PART #
11	Steel Washer	*
12	Disc Magnet (DSM only)	301289
13	Lock Washer	*
14	1/4-20x5/16" Button Head Screw	*
15	Door Spacer Tube	*
16	Sex Nut	*
17	Top Armature Mounting Bracket	301257
18	Bottom Armature Mtg. Bracket	301259
19	5/16-18x1-3/4" TJ Bracket Bolt	*

Refer to Page 7 for parts locations.

* Part of Hardware Kit (301319)

**PLEASE DELIVER THIS MANUAL
 TO THE END-USER UPON COMPLETION
 OF THE INSTALLATION**



GWXT Auxiliary Lock

**FOR PRODUCT SUPPORT AND PARTS
 ORDERING INFORMATION CONTACT:**

DynaLock Corp.
 705 Emmett Street
 Bristol, CT 06010
 Bus: (877) DYNALOCK, Toll-Free USA
 (860) 582-4761
 Fax: (860) 585-0338

DYNALOCK ON THE INTERNET:

E-mail: info@dynalock.com
 Website: www.dynalock.com